



BrewerBeef

BLACK SIMMENTALS



40 Black Simmental & SimAngus Bulls

6th Annual Sale
March 26th 2021 - 1pm

Inspections from 10am
401 Soldier Settlers Rd, Tallangatta Vic

David & Tara Brewer

Mob: 0419275686, 0419600527

Email: brewerbeef@activ8.net.au

www.brewerbeef.com.au or find us on Facebook



CP | corcoran
parker
LIVESTOCK • REAL ESTATE • MERCHANDISE

Cameron Hilton

hilton@corcoranparker.com.au

Ph: 0419 578 309



GTSM
Glasser Total Sales Management

Michael Glasser

Ph: 0403 526 702

www.raywhitegtsm.com.au

Welcome,

Brewerbeef, is proud to offer this year's draft of bulls at our 6th annual sale.

What a wonderful year we have had with buoyant beef prices and favourable seasons. Many of our clients have enjoyed sale topping results and are easily achieving their most profitable drafts in years. It has been encouraging to see how well our clients are recovering from the terrible bushfire season last year, good seasons and rainfall have allowed them to get back in the game and enjoy the amazing prices.

This year we are very proud of our sale draft of functional bulls bred to perform. Each bull has been through our thorough screening process and we are very happy to present 40 bulls which will do the job for you.

With The introduction of some new sires this year on the back of the strength of our older sires have resulted in rib and rump fat scans are up to 2mm better than previous years also our raw IMF scans have increased on average 1.5.

The sale draft average in the top 25% of the breed for calving ease, Birthweight is in the top 13% and IMF average in the top 5% of Simmentals in Australia. On the all important indexes, domestic index our bulls average in the to 30% Export index we are in the top 25%.

Due of the number of new sires this year our growth figures on Breedplan aren't showing a true reflection of the bulls performance due to lack of data on them in the system. Looking at their actual weights, they stack up or are heavier than other bulls at sales this year.

Our herd of Black Simmentals are bred to be functional, easy care cattle that perform with primary focus of the herd being easy calving, high yielding cattle with good fat cover. We look forward to presenting our 6^h sale draft and assisting you to maximise your profits on March 26th 2021

David, Tara, Austin & Henry Brewer

In these everchanging times our wish is for you to feel comfortable buying your bulls. This year we will be operating under COVID-safe guidelines and the sale will be interfaced with Elite Livestock Auctions, if you feel it's not safe for you to travel to us on sale day.

You are most welcome to arrange an inspection of the draft at any time convenient to you by calling David on 0419 275 686 or Tara on 0419 600 527.

Please register when you arrive at BrewerBeef, follow social distancing guidelines and feel free to use hand sanitiser as much as you please.

Sale Details

LOCATION: 401 Soldier Settlers Rd, Tallangatta VIC - From Tallangatta, head towards Corryong for 13k turn right into Tallangatta Creek Rd, in 3.3k right into Soldier Settlers Rd. 'Lynn Ridge' is 1.1k, 1st driveway on right. BrewerBeef signs are located on each turn.

SALE DAY SAFETY: All the sale bulls have been screened for temperament and are quiet to handle under normal circumstances. However, there are inherent risks associated with handling cattle.

Visitors Enter the cattle pens at their own risk.

Children must NOT enter the yards.

People entering the pens are at risk of injury. Be especially alert for bulls fighting. We do not expect the bulls to be aggressive with people, but sale day places extraordinary pressure on them as they experience an entirely foreign environment.

Remember the quietest bull is in fact an unpredictable animal.

Please do not crowd the bulls or loiter inside the pens.

Safety Disclaimer: The owners, employees and representatives of BrewerBeef accept no liability for any accidents that may occur at the BrewerBeef sale complex.

SELLING SYSTEM: Sale of animals will be conducted under the Helmsman auction system. All animals are sold exclusive of GST.

ONLINE BIDDING: Our 2021 sale will be interfaced with Elite Livestock Auctions. Please register at www.elitelivestockauctions.com.au or through their app and you will be able to bid during the sale.

PHONE BIDDING: Phone bidding can be arranged prior to the sale by contacting Cameron Hilton – Corcoran Parker on 0419 578309

HEALTH: All bulls have been vaccinated with Pestigard[®], Vibrovax[®] and Ultravac[®] 7in1 They have been drenched with Cydectin. All have been pestivirus tested Negative and Tallangatta Vet Clinic has assessed each bull for reproductive soundness, semen tested and structural soundness. Bulls are from a JBAS6 property.

INSURANCE: We recommend you insure all animals purchased against injury and death.

DELIVERY: Free Delivery within 200km of Tallangatta. Stock awaiting delivery will be held free of charge for up to 14 days of the sale at the buyer's risk. Please complete your delivery instructions and arrange transport with David at the conclusion of the sale.

CATERING: Lunch and refreshments will be available.

ACCOMMODATION: There is a motel and 2 Pubs in Tallangatta that offer accommodation or Albury –Wodonga is a 40 min drive from the sale barn.

GUARANTEE: We always provided full replacement guarantee against fertility and genetic faults. It is important that we are contacted as soon as possible to rectify any problem.

Disclaimer: All reasonable care has been taken by the vendor to ensure that the information provided in this catalogue is correct at the time of publication. However, neither the vendor, selling agents or publisher make no other representations about the accuracy, reliability or completeness of any information provided in this catalogue and do not assume any responsibility for the use or interpretation on the information included in this catalogue.

Caring for your new bull

On arrival at their new home it is important that you have a suitable mob of animals to greet the bull to minimise the bulls stress. Remember they are leaving the security of a large mob, they have **never been alone** and will be arriving in unfamiliar surroundings. Steers or pregnant cows would be suitable, certainly not other bulls.

At BrewerBeef, we handle our cattle quietly and strongly subscribe to calm cattle handling methods, we always give our cattle respect, and our cattle respect us.

They are used to being handled using ATV/side by side vehicles, The bulls have never been handled by dogs or horses. Gradually introduce them to dogs or horses with your existing cattle so they are not spooked by the new situation.

Handle your new bull quietly, confidently and with respect and he'll settle into his new home well, and will be easy to handle whenever the need arises.

Our temperament guarantee will NOT apply to bulls who have not been handled within these guidelines.

NOTICE TO ALL AGENTS & BUYERS

SALE REBATES

We urge you to settle on the day - either by cheque, or by EFT that night, and receive the 2% discount on offer - do the sums, not only does it make sense, it saves you dollars!

- 1.** A rebate of **4%** will be paid to all agents who attend this sale with or on behalf of their client(s) and settle within 7 days.
- 2.** A rebate of **2%** will be paid to all agents who introduce their client(s) but do not attend this sale, and settle within 7 days.
- 3.** A rebate of **1%** will be paid to all agents who settle within 7 days, but do not introduce their client(s) or do not attend this sale.
- 4.** A discount of **2%** will be given to all buyers who do not settle through an agent, and pay in full on sale day.

PLEASE NOTE: ONLY ONE OF THE ABOVE FOUR CLAUSES CAN BE USED ON ANY ONE LOT.

**Agent introductions direct Cameron Hilton – Corcoran Parker on 0419 578309
chilton@corcoranparker.com.au**

Beef Class Structural Assessment System

Over the past decade, use of the Beef Class Structural Assessment System in the seedstock industry has produced a marked improvement in herds which have shown commitment to using the information appropriately. Through these dedicated breeders, there has been a flow on effect of structural improvement throughout all sectors of the beef cattle industry.

Jim Green and Liam Cardile of 'BEEFXCEL' service many of the leading seedstock herds in Australia.

'BEEFXCEL' is not involved in any genetic marketing or specific breeding advice and therefore has no conflict of interests to influence their stock appraisal.

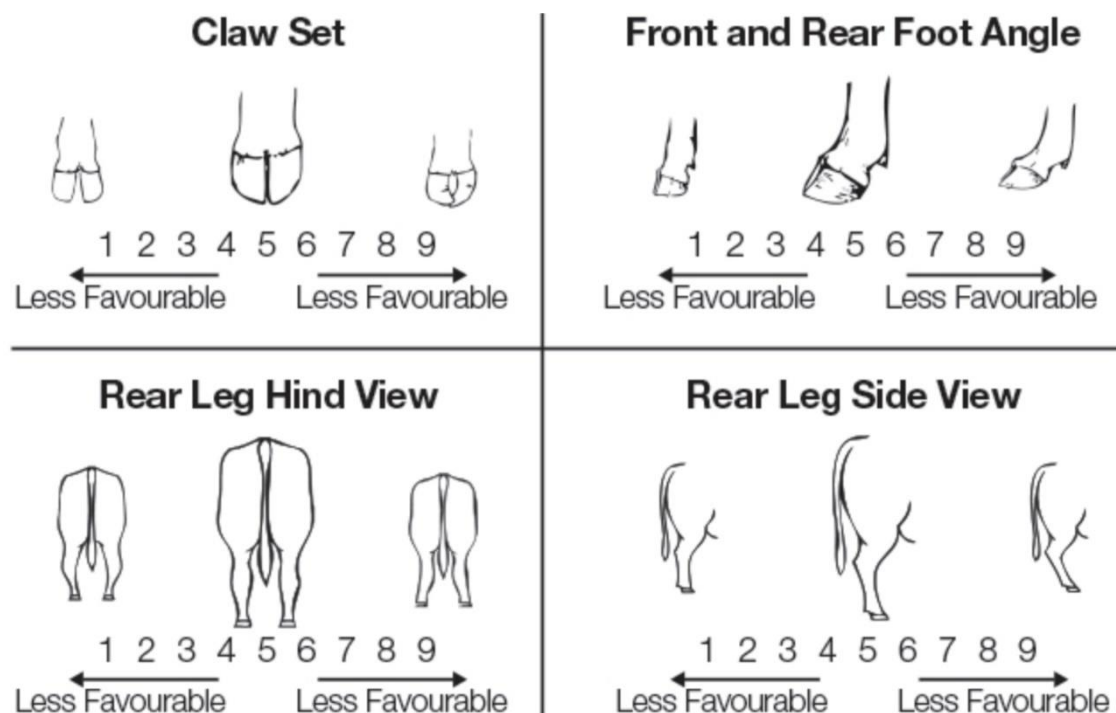
The integrity of the structural data provided by 'BEEFXCEL' is recognised throughout the industry as Jim and Liam are fully INDEPENDENT assessors.

Sale Bulls have been independently structurally assessed to maximise the quality of stock on offer. Any animals deemed inadequate have been removed from the sale draft. Brewer Beef sale bulls were assessed by **Liam Cardile** of BEEFXCEL.

How to Use the Beef Class Structural Assessment System

The Beef Class Structural Assessment System uses a 1-9 scoring system;

- A score of **5** is ideal (Note: Temperament Score of 1 is preferable);
- A score of **4 or 6** shows slight variation from ideal, but this include most animals. An animal scoring 4 or 6 would be acceptable in any breeding program;
- A score of **3 or 7** shows greater variation but would be acceptable in most commercial programs. However, seedstock producers should be vigilant and understand that this score indicates greater variation from ideal;
- A score of **2 or 8** are low scoring animals and should be looked at closely before purchasing;
- A score of **1 or 9** should not be catalogued and are considered culls.



Reference Sires

BB XSIMM Bettis L2008C (P) (B)

Born: 02/04/2015

Hooks Shear Force 38K (P) (B)

Triple C Bettis S72J (P) (B)

Lucas Josie 19K

Mr Nic Upgrade U8676 (P) (B)

XSimm Miss Lucky One J202A (B) (P)

Gw Miss Lucky One 469P



February 2021 SIMMENTAL TRANS TASMAN GROUP BREEDPLAN

	Calving Ease DIR (%)	Calving Ease DTRS (%)	Gestation Length (days)	Birth Wt. (kg)	200 Day Wt (kg)	400 Day Wt (kg)	600 Day Wt (kg)	Mat Cow Wt (kg)	Milk (kg)	Scrotal Size (cm)	Days to Calving (days)	Carcase Wt (kg)	Eye Muscle Area (sq cm)	Rib Fat (mm)	Rump Fat (mm)	Retail Beef Yield (%)	IMF (%)	Trial Docility
EBV	+4.2	+9.6	-0.3	-1.3	+26	+36	+31	+17	+7	+0.4	-1.0	+24	+6.5	+0.5	-0.8	+1.4	0.0	-
Acc	55%	55%	59%	71%	69%	71%	68%	62%	60%	57%	33%	63%	61%	61%	59%	58%	57%	-

St Pauls Stargazer G421 (P) (B)

Born: 04/03/2011

CNS Dream On L186 (P)

Circle T Antionettes Star (P)

NJC SVF Antoinette K205 (P)

ES Dakota NK68 (P)

St Pauls Pear D270 (P)

Miss Prickly Pear 615F



February 2021 SIMMENTAL TRANS TASMAN GROUP BREEDPLAN

	Calving Ease DIR (%)	Calving Ease DTRS (%)	Gestation Length (days)	Birth Wt. (kg)	200 Day Wt (kg)	400 Day Wt (kg)	600 Day Wt (kg)	Mat Cow Wt (kg)	Milk (kg)	Scrotal Size (cm)	Days to Calving (days)	Carcase Wt (kg)	Eye Muscle Area (sq cm)	Rib Fat (mm)	Rump Fat (mm)	Retail Beef Yield (%)	IMF (%)	Trial Docility
EBV	-0.3	-1.0	-2.5	+1.5	+28	+56	+61	+50	+5	+0.4	+1.0	+32	+2.2	+1.3	+0.6	-0.7	+0.5	-
Acc	65%	59%	63%	90%	85%	88%	87%	77%	64%	53%	32%	74%	70%	70%	70%	69%	61%	-

St Pauls Galaxy G439 (P) (B)

Born: 02/05/2011

Circle T Antionettes Star

CNS Dream On L186 (P)

Circle T Antionettes Star (P)

NJC SVF Antoinette K205 (P)

SRS Right On 22R (P)

St Pauls RO Pear D271 (P)

Miss Prickly Pear 615F



February 2021 SIMMENTAL TRANS TASMAN GROUP BREEDPLAN

	Calving Ease DIR (%)	Calving Ease DTRS (%)	Gestation Length (days)	Birth Wt. (kg)	200 Day Wt (kg)	400 Day Wt (kg)	600 Day Wt (kg)	Mat Cow Wt (kg)	Milk (kg)	Scrotal Size (cm)	Days to Calving (days)	Carcase Wt (kg)	Eye Muscle Area (sq cm)	Rib Fat (mm)	Rump Fat (mm)	Retail Beef Yield (%)	IMF (%)	Trial Docility
EBV	+0.1	+0.1	-1.1	+1.6	+24	+41	+45	+42	+3	-0.3	+0.2	+21	+1.3	+3.1	+2.9	-2.2	+0.6	-
Acc	57%	49%	62%	85%	81%	83%	83%	71%	53%	67%	30%	71%	66%	66%	65%	65%	58%	-

Reference Sires

Lancaster Enforcer K25 (P) (B) (AI)

Born: 14/5/2014

Lawsons Dinky Di Z191(P) - AA

Lancaster G-Force G45 (P) (B)

Lancaster Rose E087 (P) (B)

Lancaster F-Man F202 (P) (B)

Lancaster H376 (P) (B)

Lancaster Poppy E358 (P) (B)



February 2021 SIMMENTAL TRANS TASMAN GROUP BREEDPLAN

	Calving Ease DIR (%)	Calving Ease DTRS (%)	Gestation Length (days)	Birth Wt. (kg)	200 Day Wt (kg)	400 Day Wt (kg)	600 Day Wt (kg)	Mat Cow Wt (kg)	Milk (kg)	Scrotal Size (cm)	Days to Calving (days)	Carcase Wt (kg)	Eye Muscle Area (sq cm)	Rib Fat (mm)	Rump Fat (mm)	Retail Beef Yield (%)	IMF (%)	Trial Docility
EBV	+15.1	+3.5	-6.0	-5.9	+9	+23	+32	+30	+9	+0.3	-3.3	+20	+0.6	+1.2	0.0	-1.6	+2.1	-4
Acc	62%	48%	90%	89%	78%	79%	77%	63%	35%	52%	25%	60%	54%	58%	57%	56%	48%	29%

Lancaster Breakout M161 (P) (B) (AI)

Born: 10/6/2016

GW Premium Beef 021TS (B)

GW BAR CK Breakout 667Z (P) (B)

GW Miss GPRD 038W

SRS Right-On 22R (P) (B)

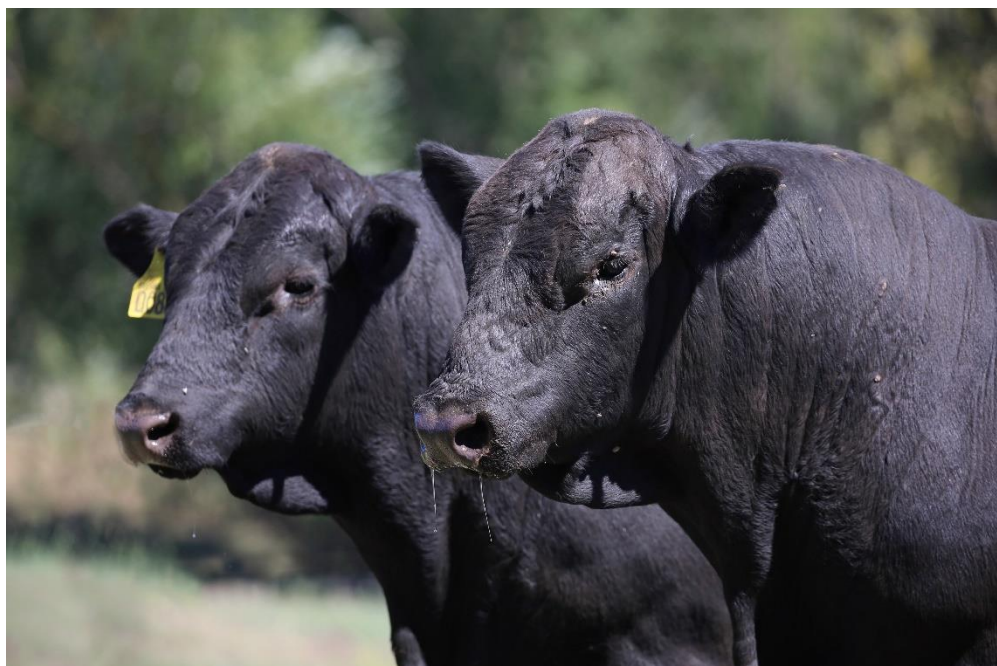
Lancaster MISS Right-On H268 (P) (AI)

Lancaster D325 (P)



February 2021 SIMMENTAL TRANS TASMAN GROUP BREEDPLAN

	Calving Ease DIR (%)	Calving Ease DTRS (%)	Gestation Length (days)	Birth Wt. (kg)	200 Day Wt (kg)	400 Day Wt (kg)	600 Day Wt (kg)	Mat Cow Wt (kg)	Milk (kg)	Scrotal Size (cm)	Days to Calving (days)	Carcase Wt (kg)	Eye Muscle Area (sq cm)	Rib Fat (mm)	Rump Fat (mm)	Retail Beef Yield (%)	IMF (%)	Trial Docility
EBV	+15.1	+3.5	-6.0	-5.9	+9	+23	+32	+30	+9	+0.3	-3.3	+20	+0.6	+1.2	0.0	-1.6	+2.1	-4
Acc	62%	48%	90%	89%	78%	79%	77%	63%	35%	52%	25%	60%	54%	58%	57%	56%	48%	29%





MANSFIELD
217 Mt. Buller Rd,
Mansfield VIC 3722
Ph: 03 5775 2542
Fax: 03 5775 2060

Daniel Craddock 0417 522 946
Stephen Purcell 0408 576 194
Fraser Cameron 0428 671 448

WODONGA
85 Hume St,
(PO Box 902)
Wodonga VIC 3690
Ph: 02 6055 3888
Fax: 02 6056 1675

Kevin Corcoran 0428 695 615
Cameron Hilton 0419 578 309
David Meehan 0418 628 945
Leigh McEvoy 0428 225 748
Gerard Parker 0428 293 890
Bo Helwig 0413 305 815

WANGARATTA
Justin Keane 0427 927 500
Gordon Perkins 0439 662 030
COROWA
Clynton Rixon 0427 690 653
CORRYONG
Rodney McKenzie 0427 707 248

“Experience and Reputation”



SIMMENTAL BREEDPLAN - Understanding the EBVs and Selection Indexes

An animal's breeding value is its genetic merit, half of which will be passed on to its progeny. While we will never know the exact breeding value, for performance traits it is possible to make good estimates. These estimates are called Estimated Breeding Values (EBVs). In the calculation of EBVs, the performance of individual animals within a contemporary group is directly compared to the average of other animals in that group. A contemporary group consists of animals of the same sex and age class within a herd, run under the same management conditions and treated equally. Indirect comparisons are made between animals reared in different contemporary groups, through the use of pedigree links between the groups. EBVs are expressed in the units of measurement for each particular trait. They are shown as +ive or -ive differences between an individual animal's genetics difference and the genetic base to which the animal is compared. For example, a bull with an EBV of +50 kg for 600-Day Weight is estimated to have genetic merit 50 kg above the breed base of 0 kg. Since the breed base is set to an historical benchmark, the average EBVs of animals in each year drop has changed over time as a result of genetic progress within the breed. The absolute value of any EBV is not critical, but rather the differences in EBVs between animals. Particular animals should be viewed as being "above or below breed average" for a particular trait. Whilst EBVs provide the best basis for the comparison of the genetic merit of animals reared in different environments and management conditions, they can only be used to compare animals analysed within the same analysis. Consequently, Simmental GROUP BREEDPLAN EBVs cannot be validly compared with EBVs from any other BREEDPLAN analysis. EBVs are published for a range of traits covering fertility, calving ease, milking ability, growth, and carcass merit. When using EBVs to assist in selection decisions it is important to achieve a balance between the different groups of traits and to place emphasis on those traits that are important to the particular herd, markets and environment. One of the advantages of having a comprehensive range of EBVs is that it is possible to avoid extremes in particular traits and select for animals with balanced overall performance.

Calving Ease EBVs (%) are based on calving difficulty scores, birth weights and gestation length information. More positive EBVs are favourable and indicate easier calving. - **CE % Dir** = Direct Calving Ease - The EBV for direct calving ease indicates the influence of the sire on calving ease in purebred females calving at two years of age. - **CE % Daughters** = Daughters' Calving Ease - The EBV for daughters' calving ease indicates how easily that sire's daughters will calve at two years of age.

Gestation Length EBV (days) is an estimate of the time from conception to the birth of the calf and is based on Artificial Insemination and hand mating records. Lower (negative) Gestation Length EBVs indicate shorter gestation length and therefore easier calving and increased growth after birth.

Birth Weight EBV (kg) is based on the measured birth weight of progeny, adjusted for dam age. The lower the value the lighter the calf at birth and the lower the likelihood of a difficult birth. This is particularly important when selecting sires for use over heifers.

200-Day Growth EBV (kg) is calculated from the weight of progeny taken between 80 and 300 days of age. Values are adjusted to 200 days and for age of dam. This EBV is the best single estimate of an animal's genetic merit for growth to early ages.

400-Day Weight EBV (kg) is calculated from the weight of progeny taken between 301 and 500 days of age, adjusted to 400 days and for age of dam. This EBV is the best single estimate of an animal's genetic merit for yearling weight.

600-Day Weight EBV (kg) is calculated from the weight of progeny taken between 501 and 900 days of age, adjusted to 600 days and for age of dam. This EBV is the best single estimate of an animal's genetic merit for growth beyond yearling age.

Mature Cow Weight EBV (kg) is based on the cow weight when the calf is weighed for weaning, adjusted to 5 years of age. This EBV is an estimate of the genetic difference in cow weight at 5 years of age and is an indicator of growth at later ages and potential feed maintenance requirements of the females in the breeding herd. Steer breeders wishing to grow animals out to a larger weight may also use the Mature Cow Weight EBV.

Milk EBV (kg) is an estimate of an animal's milking ability. For sires, this EBV indicates the effect of the daughter's milking ability, inherited from the sire, on the 200-day weights of her calves. For dams, it indicates her milking ability.

Scrotal Size EBV (cm) is calculated from the circumference of the scrotum taken between 300 and 700 days of age and adjusted to 400 days of age. This EBV is an estimate of an animal's genetic merit for scrotal size. There is also a small negative correlation with age of puberty in female progeny and therefore selection for increased scrotal size will result in reduced age at calving of female progeny.

Carcass Weight EBV (kg) is based on abattoir carcass records and is an indicator of the genetic differences in carcass weight at the standard age of 650 days.

Eye Muscle Area EBV (sq cm) is calculated from measurements from live animal ultrasound scans and from abattoir carcass data, adjusted to a standard 300 kg carcass. This EBV estimates genetic differences in eye muscle area at the 12/13th rib site of a 300 kg dressed carcass. More positive EBVs indicate better muscling on animals. Sires with relatively higher Eye Muscle Area EBVs are expected to produce better muscled and higher percentage yielding progeny at the same carcass weight than will sires with lower Eye Muscle Area EBVs.

Rib Fat and Rump Fat EBVs (mm) are calculated from measurements of subcutaneous fat depth at the 12/13 rib site and the P8 rump site and are adjusted to a standard 300 kg carcass. These EBVs are indicators of the genetic differences in fat distribution on a standard 300 kg carcass. Sires with low, or negative, fat EBVs are expected to produce leaner progeny at any particular carcass weight than will sires with higher EBVs.

Retail Beef Yield EBV (%) indicates genetic differences between animals for retail yield percentage in a standard 300 kg carcass. Sires with larger EBVs are expected to produce progeny with higher yielding carcasses.

Intramuscular Fat EBV (%) is an estimate of the genetic difference in the percentage of intramuscular fat (marbling) at the 12/13th rib site in a 300 kg carcass. Depending on market targets, larger more positive values are generally more favourable.

Selection Indexes

Simmental selection indexes are calculated for four market specifications, namely, Domestic Maternal, Export Maternal, Northern Terminal and Vealer Terminal. These Indexes relate to typical Simmental herds in temperate Australia targeting these specifications. Indexes are reported as an EBV, in units of relative earning capacity (\$'s) for a given market. They reflect both the short-term profit generated by a sire through the sale of his progeny, and the longer-term profit generated by his daughters in a self-replacing cow herd. Note that different types of animals can give similar profit values, so consideration should be given to both the index and the component EBVs when selecting animals for a particular production system. More information is available on selecting animals using a selection index.

Domestic Maternal Index - Estimates the genetic differences between animals in net profitability per cow joined for an example commercial herd in Southern Australia (e.g. Angus cows) targeting the domestic supermarket trade. Steers are either finished on grass or grain (e.g. 60-70 days). Steers are marketed at 430 kg live weight (240 kg HSCW and 6 mm P8 fat depth) at 14 months of age. Daughters are retained for breeding.

Export Maternal Index - Estimates the genetic differences between animals in net profitability per cow joined for an example commercial herd in Southern Australia (e.g. Angus cows) targeting the export trade. Steers are finished on grain (e.g. 120 days) and marketed at 700 kg live weight (380 kg HSCW and 8 mm P8 fat depth) at 28 months of age. Daughters are retained for breeding.

Northern Terminal Index - Estimates the genetic differences between animals in net profitability per cow joined for an example commercial herd in Northern Australia (e.g. Brahman cows) targeting the export trade. Steers are finished on grass and marketed at 630 kg live weight (345 kg HSCW and 12 mm P8 fat depth) at 28 months of age. This is a terminal production system therefore no daughters are retained for breeding.

Vealer Terminal Index - Estimates the genetic differences between animals in net profitability per cow joined for an example commercial herd in Southern Australia (e.g. Angus cows) targeting the vealer trade. Vealers are weaned and sold at 8 months of age weighing 350 kg (195 kg HSCW and 6 mm P8 fat depth). This is a terminal production system therefore heifers are not retained for breeding purposes.

2021 Scan Data

Lot	Name	P8 (mm)	Rib (mm)	EMA (cm ²)	IMF %	Weight (Kg)	on 31/1/21
1	BB ENFORCER Q001	11	7	120	6.3	992	
2	BB STAR Q002	7	7	130	5.0	1084	
3	BB GALAXY Q004	9	9	123	6.1	910	
4	BB BETTIS Q009	6	6	116	3.8	850	
5	BB BETTIS Q011	7	6	125	4.9	862	
6	BB STAR Q017	11	9	117	6.3	866	
7	BB ENFORCER Q018	7	6	117	6.1	824	
8	BB STAR Q021	6	6	125	4.9	878	
9	BB ENFORCER Q029	5	5	124	6.4	886	
10	BB ENFORCER Q003	5	5	124	4.1	840	
11	BB ENFORCER Q023	6	6	127	6.1	860	
12	BB STAR Q036	7	6	113	5.5	800	
13	BB STAR Q038	6	6	102	5.3	801	
14	BB STAR Q040	7	6	110	4.5	818	
15	BB ENFORCER Q042	7	6	110	3.8	860	
16	BB GALAXY Q048	6	6	112	3.2	810	
17	BB GALAXY Q050	7	6	106	4.8	792	
18	BB BETTIS Q076	6	6	112	2.5	774	
19	BB BETTIS Q077	6	6	111	3.6	740	
20	BB ENFORCER Q081	6	5	113	2.0	697	
21	BB BETTIS Q083	6	5	106	2.2	722	
22	BB BETTIS Q085	6	5	110	2.7	843	
23	BB BETTIS Q086	5	4	117	1.6	801	
24	BB BREAKOUT Q088	6	6	114	4.5	810	
25	BB BREAKOUT Q089	6	6	113	4.5	884	
26	BB BREAKOUT Q090	6	6	109	4.2	734	
27	BB BREAKOUT Q091	6	6	98	3.7	664	
28	BB BREAKOUT Q092	6	6	109	3.2	821	
29	BB BREAKOUT Q093	6	6	118	3.5	728	
30	BB BREAKOUT Q094	4	3	110	2.1	744	
31	BB STAR Q097	7	6	102	6.0	782	
32	BB STAR Q098	5	4	112	5.9	809	
33	BB STAR Q103	6	5	112	3.0	796	
34	BB ENFORCER Q106	6	6	108	6.0	715	
35	BB ENFORCER Q107	6	5	105	6.1	716	
37	BB ENFORCER Q110	6	5	109	5.3	757	
38	BB ENFORCER Q111	6	5	109	6.0	710	
39	BB STAR Q115	5	5	99	5.2	727	
40	BB ENFORCER Q123	6	4	86	2.8	635	
41	BB BREAKOUT Q069	6	5	110	4.2	794	

February 2021 SIMMENTAL TRANS TASMAN BREEDPLAN - Percentile Bands for all 2019 born animals

Use this table as a guide to compare individual animals with the current genetic level of the breed

	Calv-Ease				Birth			Growth					Fert					Carcase					Extra			Indexes		
	Dir	Dris	GL	Bwt	200	400	800	Mwt	Milk	SS	DC	Cwt	EMA	Rib	P8	RBY	IMF	Doc	DM	EM	NT	VT						
																							days	kg	cm	days	kg	sq.cm
High 1%	+12.7	+10.5	-5.9	-3.8	+35	+65	+86	+95	+16	+2.0	-5.6	+49	+5.2	+3.9	+3.5	+2.3	+1.5	+40	+67	+93	+39	+55						
High 5%	+10.2	+8.4	-4.4	-2.4	+31	+58	+75	+81	+14	+1.6	-3.8	+43	+4.3	+2.4	+2.0	+1.8	+1.1	+31	+60	+82	+35	+49						
High 10%	+8.6	+6.9	-3.6	-1.7	+29	+53	+68	+73	+13	+1.3	-3.1	+39	+3.8	+1.7	+1.4	+1.6	+0.8	+26	+55	+74	+33	+46						
High 15%	+7.4	+6.0	-3.0	-1.2	+27	+50	+64	+68	+12	+1.2	-2.8	+35	+3.5	+1.3	+1.1	+1.5	+0.7	+22	+52	+69	+31	+44						
High 20%	+6.5	+5.1	-2.7	-0.8	+26	+47	+61	+64	+12	+1.0	-2.6	+33	+3.3	+1.1	+0.9	+1.3	+0.5	+20	+50	+65	+30	+42						
High 25%	+5.6	+4.5	-2.4	-0.5	+25	+45	+57	+60	+11	+0.9	-2.4	+31	+3.1	+0.9	+0.7	+1.2	+0.4	+17	+47	+61	+28	+41						
High 30%	+4.9	+3.8	-2.2	-0.2	+24	+42	+54	+56	+11	+0.8	-2.2	+29	+3.0	+0.7	+0.5	+1.1	+0.3	+15	+45	+57	+27	+39						
High 35%	+4.2	+3.1	-1.9	+0.2	+23	+40	+51	+52	+10	+0.7	-2.0	+28	+2.8	+0.6	+0.4	+1.0	+0.3	+13	+43	+54	+26	+38						
High 40%	+3.6	+2.6	-1.7	+0.5	+22	+39	+49	+49	+10	+0.7	-1.8	+26	+2.7	+0.4	+0.3	+1.0	+0.2	+11	+41	+51	+25	+37						
High 45%	+2.9	+1.9	-1.5	+0.8	+21	+37	+46	+46	+9	+0.6	-1.6	+25	+2.6	+0.3	+0.1	+0.9	+0.2	+9	+39	+48	+24	+35						
50%	+2.3	+1.3	-1.3	+1.1	+20	+36	+44	+43	+9	+0.5	-1.4	+24	+2.4	+0.2	+0.0	+0.8	+0.2	+7	+37	+44	+23	+34						
Low 45%	+1.6	+0.8	-1.0	+1.3	+20	+34	+41	+41	+8	+0.4	-1.2	+22	+2.3	+0.0	-0.1	+0.6	+0.1	+6	+35	+42	+23	+33						
Low 40%	+1.0	+0.2	-0.8	+1.5	+19	+32	+39	+38	+8	+0.3	-1.0	+21	+2.2	-0.1	-0.2	+0.5	+0.1	+4	+34	+39	+22	+32						
Low 35%	+0.3	-0.4	-0.6	+1.7	+18	+31	+37	+36	+7	+0.3	-0.8	+20	+2.1	-0.2	-0.3	+0.4	+0.1	+3	+32	+36	+21	+30						
Low 30%	-0.4	-1.1	-0.4	+1.8	+17	+29	+35	+33	+6	+0.2	-0.6	+19	+2.0	-0.3	-0.4	+0.2	+0.0	+1	+30	+33	+20	+29						
Low 25%	-1.0	-1.8	-0.2	+2.0	+16	+27	+33	+31	+6	+0.1	-0.4	+17	+1.8	-0.4	-0.6	+0.0	+0.0	-1	+28	+30	+19	+28						
Low 20%	-1.7	-2.6	+0.0	+2.3	+15	+26	+31	+28	+5	+0.0	-0.2	+16	+1.7	-0.6	-0.7	-0.2	-0.1	-2	+26	+27	+18	+26						
Low 15%	-2.6	-3.5	+0.3	+2.5	+14	+24	+28	+25	+4	-0.1	+0.0	+15	+1.5	-0.7	-0.8	-0.5	-0.1	-5	+24	+23	+17	+24						
Low 10%	-3.8	-4.7	+0.6	+2.8	+13	+21	+24	+20	+3	-0.3	+0.2	+13	+1.2	-0.8	-1.0	-0.8	-0.2	-8	+21	+18	+15	+22						
Low 5%	-5.6	-6.4	+1.1	+3.2	+10	+17	+19	+14	+1	-0.6	+0.5	+11	+0.8	-1.0	-1.3	-1.4	-0.3	-12	+17	+10	+13	+18						
Low 1%	-10.0	-9.3	+2.1	+4.1	+3	+9	+10	+2	-2	-1.4	+1.0	+5	-0.4	-1.4	-1.9	-2.7	-0.5	-18	+8	-5	+8	+8						

Autumn Bulls

Lot 1 BB ENFORCER Q001

Ident: SVD0Q001

Born: 14/05/2019

Blk Simm	Angus
87.5%	12.5%

31/1/21: **992Kg**

LANCASTER G-FORCE G45
LANCASTER ENFORCER K25
 LANCASTER POPPY H376

LANCASTER GRINGO G180
SYLVANDELE GWEN K144
 SYLVANDELE GWEN D243

Beef Class Structural Assessment								
F Claw Set	H Claw Set	Front Angle	Rear Angle	Rear Leg Side	Rear Leg Hind	Muscle Score	Sheath	Temp
5	5	5	6	5	6	B	2	1

Our first Enforcer son offered, this long, thick super quiet bull has a set of exciting figures that match his phenotype. A complete package.

February 2021 SIMMENTAL TRANS TASMAN GROUP BREEDPLAN

	Calving Ease DIR (%)	Calving Ease DTRS (%)	Gest Length (days)	Birth Wt. (kg)	200 Day Wt (kg)	400 Day Wt (kg)	600 Day Wt (kg)	Mat Cow Wt (kg)	Milk (kg)	Scrotal Size (cm)	Carcass Wt (kg)	Eye Muscle Area (sq cm)	Rib Fat (mm)	Rump Fat (mm)	Retail Beef Yield (%)	IMF (%)	Domestic Maternal Index (\$)	Export Maternal Index (\$)	Northern Terminal Index (\$)	Vealer Terminal Index (\$)
EBV	+6.6	+3.9	-3.2	-1.3	+21	+40	+54	+59	+6	+0.8	+26	+0.7	+1.9	+1.2	-1.8	+1.5	58	94	36	41
Rank	20	30	15	15	45	35	30	25		30	40		10	15		1	5	1	5	25

Lot 2 BB STAR Q002

Ident: SVD0Q002

Born: 04/02/2019

Blk Simm	Angus
PURE	

31/1/21: **1084Kg**

CIRCLE C ANTOINETTES STAR
ST PAULS STAR GAZER G421
 ST PAULS RO PEAR D270

LANCASTER AJAX
SYLVANDELE B VELVET D173
 BREWERS B VELVET A726

Beef Class Structural Assessment								
F Claw Set	H Claw Set	Front Angle	Rear Angle	Rear Leg Side	Rear Leg Hind	Muscle Score	Sheath	Temp
6	6	6	6	5	5	B-	4	2

A front paddock bull. One of the heaviest we've ever bred. Suited for feedlot steers and bullocks, this fellow will put extra capacity in your cattle. His performance during this short preparation has been nothing short of amazing, doing ability, weight gain and finish are impressive.

February 2021 SIMMENTAL TRANS TASMAN GROUP BREEDPLAN

	Calving Ease DIR (%)	Calving Ease DTRS (%)	Gest Length (days)	Birth Wt. (kg)	200 Day Wt (kg)	400 Day Wt (kg)	600 Day Wt (kg)	Mat Cow Wt (kg)	Milk (kg)	Scrotal Size (cm)	Carcass Wt (kg)	Eye Muscle Area (sq cm)	Rib Fat (mm)	Rump Fat (mm)	Retail Beef Yield (%)	IMF (%)	Domestic Maternal Index (\$)	Export Maternal Index (\$)	Northern Terminal Index (\$)	Vealer Terminal Index (\$)
EBV	-0.2	-0.3	-2.1	+1.4	+23	+44	+51	+47	+7	0.0	+26	+2.4	+0.7	-0.1	-0.2	+0.6	39	48	27	34
Rank					35	25	35				40		30			17	45	45	30	

Lot 3 BB GALAXY Q004

Ident: SVD0Q004

Born: 07/05/2019

Blk Simm	Angus
PURE	

31/1/21: **910Kg**

CIRCLE C ANTOINETTES STAR
ST PAULS GALAXY G439
 ST PAULS RO PEAR D271

LANCASTER BLACKJACK B409
SYLVANDELE ELAINE J041
 SYLVANDELE ELAINE E365

Beef Class Structural Assessment								
F Claw Set	H Claw Set	Front Angle	Rear Angle	Rear Leg Side	Rear Leg Hind	Muscle Score	Sheath	Temp
6	6	5	6	5	5	B	4	3

He ticks all the boxes, growth, thickness softness and finish. If he wasn't a Galaxy calf he would have stayed with us, but there are too many sisters in the herd.

February 2021 SIMMENTAL TRANS TASMAN GROUP BREEDPLAN

	Calving Ease DIR (%)	Calving Ease DTRS (%)	Gest Length (days)	Birth Wt. (kg)	200 Day Wt (kg)	400 Day Wt (kg)	600 Day Wt (kg)	Mat Cow Wt (kg)	Milk (kg)	Scrotal Size (cm)	Carcass Wt (kg)	Eye Muscle Area (sq cm)	Rib Fat (mm)	Rump Fat (mm)	Retail Beef Yield (%)	IMF (%)	Domestic Maternal Index (\$)	Export Maternal Index (\$)	Northern Terminal Index (\$)	Vealer Terminal Index (\$)
EBV	+1.0	+2.1	-1.2	+0.9	+20	+32	+36	+39	+3	+0.2	+16	+1.1	+2.4	+2.0	-2.1	+0.8	31	39	22	27
Rank		45		45	50								5	5		10				

Lot 4 BB BETTIS Q009

Ident: SVD0Q009

Born: 11/05/2019

Blk Simm	Angus
PURE	

31/1/21: **850Kg**

TRIPLE C BETTIS S72J
XSIM BETTIS L2008C
 XSIMM MS LKY ONE J2020A

LANCASTER AJAX
SYLVANDEALE GWEN D134
 BREWERS GWEN B857

Beef Class Structural Assessment								
F Claw Set	H Claw Set	Front Angle	Rear Angle	Rear Leg Side	Rear Leg Hind	Muscle Score	Sheath	Temp
6	6	5	5	4	5	B	4	1

The first son offered by Xsimm Bettis L2008C. When we purchased L2008C noted composite breeder Chris Davidson commented he was the best black simmental bull he had seen in the flesh in Australia. His calves all carry his traits of excellent structure, temperament and feet. Please note this bull has a white belly.

February 2021 SIMMENTAL TRANS TASMAN GROUP BREEDPLAN

	Calving Ease DIR (%)	Calving Ease DTRS (%)	Gest Length (days)	Birth Wt. (kg)	200 Day Wt (kg)	400 Day Wt (kg)	600 Day Wt (kg)	Mat Cow Wt (kg)	Milk (kg)	Scrotal Size (cm)	Carcase Wt (kg)	Eye Muscle Area (sq cm)	Rib Fat (mm)	Rump Fat (mm)	Retail Beef Yield (%)	IMF (%)	Domestic Maternal Index (\$)	Export Maternal Index (\$)	Northern Terminal Index (\$)	Vealer Terminal Index (\$)
EBV	+3.6	+7.2	-0.4	-0.7	+19	+26	+25	+20	+5	-0.1	+16	+4.1	+0.2	-1.1	+0.7	+0.2	39	43	17	36
Rank	40	10		20								7				40	40			40

Lot 5 BB BETTIS Q011

Ident: SVD0Q011

Born: 20/05/2019

Blk Simm	Angus
PURE	

31/1/21: **862Kg**

TRIPLE C BETTIS S72J
XSIM BETTIS L2008C
 XSIMM MS LKY ONE J2020A

CO-OP Z422
SYLVANDEALE HIGHLIGHT C085
 BREWERS HIGHLIGHT Y379

Beef Class Structural Assessment								
F Claw Set	H Claw Set	Front Angle	Rear Angle	Rear Leg Side	Rear Leg Hind	Muscle Score	Sheath	Temp
5	5	5	6	5	5	B	4	2

This Bettis L2008C son has the 2nd highest EMA in the draft, and is in the top 5% of the breed. He is a more moderate framed bull but is the thickest, best topped bull of the Autumn bulls.

February 2021 SIMMENTAL TRANS TASMAN GROUP BREEDPLAN

	Calving Ease DIR (%)	Calving Ease DTRS (%)	Gest Length (days)	Birth Wt. (kg)	200 Day Wt (kg)	400 Day Wt (kg)	600 Day Wt (kg)	Mat Cow Wt (kg)	Milk (kg)	Scrotal Size (cm)	Carcase Wt (kg)	Eye Muscle Area (sq cm)	Rib Fat (mm)	Rump Fat (mm)	Retail Beef Yield (%)	IMF (%)	Domestic Maternal Index (\$)	Export Maternal Index (\$)	Northern Terminal Index (\$)	Vealer Terminal Index (\$)
EBV	+0.7	+5.8	-0.2	+0.2	+23	+33	+33	+26	+7	+0.2	+20	+4.3	+0.6	-0.3	+0.6	+0.2	40	42	20	38
Rank		15	35	35	35							5	35			40	40			35

Lot 6 BB STAR Q017

Ident: SVD0Q017

Born: 24/05/2019

Blk Simm	Angus
PURE	

31/1/21: **866Kg**

CIRCLE C ANTOINETTES STAR
ST PAULS STAR GAZER G421
 ST PAULS RO PEAR D270

LANCASTER COLONEL C297
SYLVANDEALE GWEN F521
 SYLVANDEALE GWEN D134

Beef Class Structural Assessment								
F Claw Set	H Claw Set	Front Angle	Rear Angle	Rear Leg Side	Rear Leg Hind	Muscle Score	Sheath	Temp
6	6	5	5	4	3	B-	4	1

A more moderate Star son, he is thick, deep, he carries an excellent muscle pattern and a strong top. He is top ranking in IMF and fats.

February 2021 SIMMENTAL TRANS TASMAN GROUP BREEDPLAN

	Calving Ease DIR (%)	Calving Ease DTRS (%)	Gest Length (days)	Birth Wt. (kg)	200 Day Wt (kg)	400 Day Wt (kg)	600 Day Wt (kg)	Mat Cow Wt (kg)	Milk (kg)	Scrotal Size (cm)	Carcase Wt (kg)	Eye Muscle Area (sq cm)	Rib Fat (mm)	Rump Fat (mm)	Retail Beef Yield (%)	IMF (%)	Domestic Maternal Index (\$)	Export Maternal Index (\$)	Northern Terminal Index (\$)	Vealer Terminal Index (\$)
EBV	+3.3	+1.9	-2.1	-0.4	+18	+32	+33	+33	+4	+0.2	+17	+1.2	+2.4	+2.1	-2.1	+0.9	37	46	24	30
Rank	40		30	25									5	5		10			40	

Lot 7 BB ENFORCER Q018

Ident: SVD0Q018

Born: 27/05/2019

Blk Simm	Angus
87.5%	12.5%

31/1/21: **824Kg**

LANCASTER G-FORCE G45
LANCASTER ENFORCER K25
 LANCASTER POPPY H376

LANCASTER COLONEL C297
SYLVANDEALE RACHEAL F527
 SYLVANDEALE RACHEAL D146

Beef Class Structural Assessment								
F Claw Set	H Claw Set	Front Angle	Rear Angle	Rear Leg Side	Rear Leg Hind	Muscle Score	Sheath	Temp
6	6	6	6	6	5	B	3	2

Q18 is a unique package, high IMF, super low birth with thickness and depth that you don't see in most bulls.

February 2021 SIMMENTAL TRANS TASMAN GROUP BREEDPLAN

	Calving Ease DIR (%)	Calving Ease DTRS (%)	Gest Length (days)	Birth Wt. (kg)	200 Day Wt (kg)	400 Day Wt (kg)	600 Day Wt (kg)	Mat Cow Wt (kg)	Milk (kg)	Scrotal Size (cm)	Carcase Wt (kg)	Eye Muscle Area (sq cm)	Rib Fat (mm)	Rump Fat (mm)	Retail Beef Yield (%)	IMF (%)	Domestic Maternal Index (\$)	Export Maternal Index (\$)	Northern Terminal Index (\$)	Vealer Terminal Index (\$)
EBV	+10.9	+4.9	-4.4	-4.3	+8	+15	+16	+14	+7	-0.3	+11	+1.4	+0.9	-0.3	-1.1	+1.7	42	63	19	29
Rank	5	20	5	1									25		1	35	22			

Lot 8 BB STAR Q021

Ident: SVD0Q021

Born: 02/06/2019

Blk Simm	Angus
50%	50%

31/1/21: **878Kg**

CIRCLE C ANTOINETTES STAR
ST PAULS STAR GAZER G421
 ST PAULS RO PEAR D270

LANCASTER AJAX
SYLVANDEALE GWEN D243
 BREWERS GWEN Y460

Beef Class Structural Assessment								
F Claw Set	H Claw Set	Front Angle	Rear Angle	Rear Leg Side	Rear Leg Hind	Muscle Score	Sheath	Temp
6	6	5	6	5	5	B	4	1

With the 2nd highest EMA and one of the heavier bulls in the draft, he has stood out to a number of stud breeders on inspection.

February 2021 SIMMENTAL TRANS TASMAN GROUP BREEDPLAN

	Calving Ease DIR (%)	Calving Ease DTRS (%)	Gest Length (days)	Birth Wt. (kg)	200 Day Wt (kg)	400 Day Wt (kg)	600 Day Wt (kg)	Mat Cow Wt (kg)	Milk (kg)	Scrotal Size (cm)	Carcase Wt (kg)	Eye Muscle Area (sq cm)	Rib Fat (mm)	Rump Fat (mm)	Retail Beef Yield (%)	IMF (%)	Domestic Maternal Index (\$)	Export Maternal Index (\$)	Northern Terminal Index (\$)	Vealer Terminal Index (\$)
EBV	-0.2	+2.1	-1.8	+1.2	+22	+40	+45	+39	+3	-0.2	+24	+3.4	0.0	-1.1	+0.8	+0.4	37	43	24	35
Rank		45	35		40	35						15			25				40	

Lot 9 BB ENFORCER Q029

Ident: SVD0Q029

Born: 07/06/2019

Blk Simm	Angus
75%	25%

31/1/21: **886Kg**

LANCASTER G-FORCE G45
LANCASTER ENFORCER K25
 LANCASTER POPPY H376

HC HUMMER 12M
CIRCLE EIGHT ROSEBUD E18
 CIRCLE EIGHT ROSEBUD C113

Beef Class Structural Assessment								
F Claw Set	H Claw Set	Front Angle	Rear Angle	Rear Leg Side	Rear Leg Hind	Muscle Score	Sheath	Temp
6	5	5	5	4	5	B	4	2

This top end weight gaining bull oozes calving ease, low birth, high IMF and has a huge EMA. He has a great pedigree, set of figures and the phenotype to match.

February 2021 SIMMENTAL TRANS TASMAN GROUP BREEDPLAN

	Calving Ease DIR (%)	Calving Ease DTRS (%)	Gest Length (days)	Birth Wt. (kg)	200 Day Wt (kg)	400 Day Wt (kg)	600 Day Wt (kg)	Mat Cow Wt (kg)	Milk (kg)	Scrotal Size (cm)	Carcase Wt (kg)	Eye Muscle Area (sq cm)	Rib Fat (mm)	Rump Fat (mm)	Retail Beef Yield (%)	IMF (%)	Domestic Maternal Index (\$)	Export Maternal Index (\$)	Northern Terminal Index (\$)	Vealer Terminal Index (\$)
EBV	+11.0	+6.9	-5.4	-3.8	+15	+33	+40	+36	+7	+0.1	+23	+1.1	+0.8	-0.7	-0.7	+1.9	62	97	32	41
Rank	3	10	3	1									30		1	4	1	10	25	

Lot 10 BB ENFORCER Q003

Ident: SVDOQ003

Born: 06/05/2019

Blk Simm	Angus
87.5%	12.5%

31/1/21: **840Kg**

LANCASTER G-FORCE G45
LANCASTER ENFORCER K25
 LANCASTER POPPY H376

MR NLC UPGRADE U8676
CIRCLE EIGHT PERFECTION J172
 CIRCLE EIGHT PERFECTION F203

Beef Class Structural Assessment								
F Claw Set	H Claw Set	Front Angle	Rear Angle	Rear Leg Side	Rear Leg Hind	Muscle Score	Sheath	Temp
5	6	5	6	6	5	B	5	2

Absolutely thick as a brick, this deep bodied, correct bull is backed by a fabulous pedigree. He oozes low birth, calving ease and EMA. Vealer bull option.

February 2021 SIMMENTAL TRANS TASMAN GROUP BREEDPLAN

	Calving Ease DIR (%)	Calving Ease DTRS (%)	Gest Length (days)	Birth Wt. (kg)	200 Day Wt (kg)	400 Day Wt (kg)	600 Day Wt (kg)	Mat Cow Wt (kg)	Milk (kg)	Scrotal Size (cm)	Carcass Wt (kg)	Eye Muscle Area (sq cm)	Rib Fat (mm)	Rump Fat (mm)	Retail Beef Yield (%)	IMF (%)	Domestic Maternal Index (\$)	Export Maternal Index (\$)	Northern Terminal Index (\$)	Vealer Terminal Index (\$)
EBV	+9.4	+4.2	-3.6	-3.3	+17	+30	+29	+19	+6	-0.1	+22	+3.7	+0.7	-0.6	+0.1	+1.4	55	76	27	45
Rank	10	25	10	5								10	30		1	10	10	30	10	

Lot 11 BB ENFORCER Q023

Ident: BBS0Q023

Born: 05/06/2019

Blk Simm	Angus
75%	25%

31/1/21: **860Kg**

LANCASTER G-FORCE G45
LANCASTER ENFORCER K25
 LANCASTER POPPY H376

NICHOLS MANIFEST T79
XSIMM MISS LC K2095B
 GW MISS LC 321R 632T

Beef Class Structural Assessment								
F Claw Set	H Claw Set	Front Angle	Rear Angle	Rear Leg Side	Rear Leg Hind	Muscle Score	Sheath	Temp
6	6	6	6	6	5	B	4	2

Another that ticks all the boxes, calving ease, low birth, Q23 is the highest EMA and second IMF scanning bull of the draft. He is bred in the purple, thick, soft and a great set of numbers.

February 2021 SIMMENTAL TRANS TASMAN GROUP BREEDPLAN

	Calving Ease DIR (%)	Calving Ease DTRS (%)	Gest Length (days)	Birth Wt. (kg)	200 Day Wt (kg)	400 Day Wt (kg)	600 Day Wt (kg)	Mat Cow Wt (kg)	Milk (kg)	Scrotal Size (cm)	Carcass Wt (kg)	Eye Muscle Area (sq cm)	Rib Fat (mm)	Rump Fat (mm)	Retail Beef Yield (%)	IMF (%)	Domestic Maternal Index (\$)	Export Maternal Index (\$)	Northern Terminal Index (\$)	Vealer Terminal Index (\$)
EBV	+9.9	+2.5	-4.0	-3.2	+18	+36	+43	+41	+7	+0.2	+27	+2.5	+1.2	+0.1	-0.6	+1.4	59	88	34	46
Rank	6	40	10	3							35	45	20	45		1	5	3	5	10

Lot 12 BB STAR Q036

Ident: SVDOQ036

Born: 08/06/2019

Blk Simm	Angus
PURE	

31/1/21: **800Kg**

CIRCLE C ANTOINETTES STAR
ST PAULS STAR GAZER G421
 ST PAULS RO PEAR D270

LANCASTER BLACKJACK B409
SYLVANDALE GWEN J063
 SYLVANDALE GWEN D243

Beef Class Structural Assessment								
F Claw Set	H Claw Set	Front Angle	Rear Angle	Rear Leg Side	Rear Leg Hind	Muscle Score	Sheath	Temp
6	6	6	6	6	5	B	4	2

A typical Star son, good bodied, smooth fronted, structurally correct with plenty of top and length.

February 2021 SIMMENTAL TRANS TASMAN GROUP BREEDPLAN

	Calving Ease DIR (%)	Calving Ease DTRS (%)	Gest Length (days)	Birth Wt. (kg)	200 Day Wt (kg)	400 Day Wt (kg)	600 Day Wt (kg)	Mat Cow Wt (kg)	Milk (kg)	Scrotal Size (cm)	Carcass Wt (kg)	Eye Muscle Area (sq cm)	Rib Fat (mm)	Rump Fat (mm)	Retail Beef Yield (%)	IMF (%)	Domestic Maternal Index (\$)	Export Maternal Index (\$)	Northern Terminal Index (\$)	Vealer Terminal Index (\$)
EBV	-0.4	+2.3	-2.1	+1.0	+21	+37	+39	+36	+4	+0.2	+19	+2.3	+0.9	+0.1	-0.6	+0.9	34	40	21	29
Rank		45	30		45	45							25	45		10				

Lot 13 BB STAR Q038

Ident: SVDOQ038

Born: 10/06/2019

Blk Simm	Angus
PURE	

31/1/21: **801Kg**

CIRCLE C ANTOINETTES STAR
ST PAULS STAR GAZER G421
 ST PAULS RO PEAR D270

GW LUCKY MAN 644N
SYLVANDEALE ALETA F502
 SYLVANDEALE ALETA D207

Beef Class Structural Assessment								
F Claw Set	H Claw Set	Front Angle	Rear Angle	Rear Leg Side	Rear Leg Hind	Muscle Score	Sheath	Temp
5	6	5	6	5	5	B-	5	2

Another sound Star son, full of IMF and growth. He is free moving, big, long and quiet. Out of a fabulous cow line.

February 2021 SIMMENTAL TRANS TASMAN GROUP BREEDPLAN

	Calving Ease DIR (%)	Calving Ease DTRS (%)	Gest Length (days)	Birth Wt. (kg)	200 Day Wt (kg)	400 Day Wt (kg)	600 Day Wt (kg)	Mat Cow Wt (kg)	Milk (kg)	Scrotal Size (cm)	Carcase Wt (kg)	Eye Muscle Area (sq cm)	Rib Fat (mm)	Rump Fat (mm)	Retail Beef Yield (%)	IMF (%)	Domestic Maternal Index (\$)	Export Maternal Index (\$)	Northern Terminal Index (\$)	Vealer Terminal Index (\$)
EBV	+0.4	+0.5	-1.8	+0.9	+23	+41	+47	+47	+5	0.0	+19	0.0	+1.4	+0.7	-1.6	+0.8	37	47	25	29
Rank			35	45	35	35	45	45					15	25		10		45	40	

Lot 14 BB STAR Q040

Ident: SVDOQ040

Born: 12/06/2019

Blk Simm	Angus
PURE	

31/1/21: **818Kg**

CIRCLE C ANTOINETTES STAR
ST PAULS STAR GAZER G421
 ST PAULS RO PEAR D270

CO-OP LUCKY DICE Z422
SYLVANDEALE ELAINE E365
 BREWERS RACHEAL A805

Beef Class Structural Assessment								
F Claw Set	H Claw Set	Front Angle	Rear Angle	Rear Leg Side	Rear Leg Hind	Muscle Score	Sheath	Temp
5	6	5	6	5	5	B	4	2

Q40's dam is amazing, she always has a good one and he is no exception. Thick, soft, easy doing and free moving. He has been a stand out in inspections.

February 2021 SIMMENTAL TRANS TASMAN GROUP BREEDPLAN

	Calving Ease DIR (%)	Calving Ease DTRS (%)	Gest Length (days)	Birth Wt. (kg)	200 Day Wt (kg)	400 Day Wt (kg)	600 Day Wt (kg)	Mat Cow Wt (kg)	Milk (kg)	Scrotal Size (cm)	Carcase Wt (kg)	Eye Muscle Area (sq cm)	Rib Fat (mm)	Rump Fat (mm)	Retail Beef Yield (%)	IMF (%)	Domestic Maternal Index (\$)	Export Maternal Index (\$)	Northern Terminal Index (\$)	Vealer Terminal Index (\$)
EBV	+0.6	+0.6	-1.4	+0.7	+21	+40	+38	+31	+6	+0.2	+20	+1.2	+1.1	+0.3	-1.1	+0.4	34	32	20	28
Rank			50	45	45	35							20	40		25				

Lot 15 BB ENFORCER Q042

Ident: SVDOQ042

Born: 14/06/2019

Blk Simm	Angus
75%	25%

31/1/21: **860Kg**

LANCASTER G-FORCE G45
LANCASTER ENFORCER K25
 LANCASTER POPPY H376

LANCASTER COLONEL C297
SYLVANDEALE B VELVET H847
 SYLVANDEALE B VELVET D173

Beef Class Structural Assessment								
F Claw Set	H Claw Set	Front Angle	Rear Angle	Rear Leg Side	Rear Leg Hind	Muscle Score	Sheath	Temp
5	6	5	6	5	5	B	5	1

One of the heavier bulls of the draft, Q42 is extra long, has an excellent musce pattern and a great disposition. Low birth Enforcer son with growth and fat.

February 2021 SIMMENTAL TRANS TASMAN GROUP BREEDPLAN

	Calving Ease DIR (%)	Calving Ease DTRS (%)	Gest Length (days)	Birth Wt. (kg)	200 Day Wt (kg)	400 Day Wt (kg)	600 Day Wt (kg)	Mat Cow Wt (kg)	Milk (kg)	Scrotal Size (cm)	Carcase Wt (kg)	Eye Muscle Area (sq cm)	Rib Fat (mm)	Rump Fat (mm)	Retail Beef Yield (%)	IMF (%)	Domestic Maternal Index (\$)	Export Maternal Index (\$)	Northern Terminal Index (\$)	Vealer Terminal Index (\$)
EBV	+10.7	+2.0	-4.2	-3.0	+14	+28	+39	+44	+9	+0.3	+22	+0.9	+1.1	0.0	-1.3	+1.3	49	76	30	36
Rank	5	45	7	5					0				20	50		2	20	10	20	45

Lot 16 BB GALAXY Q048

Ident: SVD0Q048

Born: 16/06/2019

Blk Simm	Angus
PURE	

31/1/21: **810Kg**

CIRCLE C ANTOINETTES STAR
ST PAULS GALAXY G439
 ST PAULS RO PEAR D271

LANCASTER BLACKJACK B409
SYLVANDEALE B VELVET J030
 SYLVANDAL B VELVET E324

Beef Class Structural Assessment								
F Claw Set	H Claw Set	Front Angle	Rear Angle	Rear Leg Side	Rear Leg Hind	Muscle Score	Sheath	Temp
5	6	5	5	5	5	B	4	2

One of the last Galaxy sons to be offered, Q48 is a super docile, thick, long, great topped bull out of a strong cow family.

February 2021 SIMMENTAL TRANS TASMAN GROUP BREEDPLAN

	Calving Ease DIR (%)	Calving Ease DTRS (%)	Gest Length (days)	Birth Wt. (kg)	200 Day Wt (kg)	400 Day Wt (kg)	600 Day Wt (kg)	Mat Cow Wt (kg)	Milk (kg)	Scrotal Size (cm)	Carcass Wt (kg)	Eye Muscle Area (sq cm)	Rib Fat (mm)	Rump Fat (mm)	Retail Beef Yield (%)	IMF (%)	Domestic Maternal Index (\$)	Export Maternal Index (\$)	Northern Terminal Index (\$)	Vealer Terminal Index (\$)
EBV	+0.4	+1.6	-1.2	+1.1	+22	+37	+38	+39	+4	+0.2	+20	+1.8	+1.9	+1.3	-1.4	+0.6	34	38	22	30
Rank		50		50	40	45							10	10		17				

Lot 17 BB GALAXY Q050

Ident: SVD0Q050

Born: 17/06/2019

Blk Simm	Angus
PURE	

31/1/21: **792Kg**

CIRCLE C ANTOINETTES STAR
ST PAULS GALAXY G439
 ST PAULS RO PEAR D271

LANCASTER AJAX
SYLVANDEALE DAWN F525
 SYLVANDEALE DAWN A674

Beef Class Structural Assessment								
F Claw Set	H Claw Set	Front Angle	Rear Angle	Rear Leg Side	Rear Leg Hind	Muscle Score	Sheath	Temp
5	6	5	6	5	6	B-	5	2

The youngest of the drop, this later maturing, free moving bull carries plenty of softness and doing ability. Look at those fat figures.

February 2021 SIMMENTAL TRANS TASMAN GROUP BREEDPLAN

	Calving Ease DIR (%)	Calving Ease DTRS (%)	Gest Length (days)	Birth Wt. (kg)	200 Day Wt (kg)	400 Day Wt (kg)	600 Day Wt (kg)	Mat Cow Wt (kg)	Milk (kg)	Scrotal Size (cm)	Carcass Wt (kg)	Eye Muscle Area (sq cm)	Rib Fat (mm)	Rump Fat (mm)	Retail Beef Yield (%)	IMF (%)	Domestic Maternal Index (\$)	Export Maternal Index (\$)	Northern Terminal Index (\$)	Vealer Terminal Index (\$)
EBV	+0.8	+1.3	-1.5	+0.6	+18	+31	+36	+37	+5	-0.4	+14	+0.7	+2.1	+1.7	-1.9	+0.9	32	40	21	25
Rank		50	45	40									10	10		10				

Spring Bulls

Lot 18 BB BETTIS Q076

Ident: SVD0Q076

Born: 14/09/2019

Blk Simm	Angus
Pure	

31/1/21: **774Kg**

TRIPLE C BETTIS S72J
XSIM BETTIS L2008C
 XSIMM MS LKY ONE J2020A

SRS J914 PREFERRED BEEF
LANCASTER POPPY E091
 LANCASTER POPPY

Beef Class Structural Assessment								
F Claw Set	H Claw Set	Front Angle	Rear Angle	Rear Leg Side	Rear Leg Hind	Muscle Score	Sheath	Temp
5	6	5	5	5	5	B	5	1

An eye catching Simangus bull with excellent scans and fabulous weight for age, he is a really high volume bull to kick off the Spring drop bulls.

February 2021 SIMMENTAL TRANS TASMAN GROUP BREEDPLAN

	Calving Ease DIR (%)	Calving Ease DTRS (%)	Gest Length (days)	Birth Wt. (kg)	200 Day Wt (kg)	400 Day Wt (kg)	600 Day Wt (kg)	Mat Cow Wt (kg)	Milk (kg)	Scrotal Size (cm)	Carcass Wt (kg)	Eye Muscle Area (sq cm)	Rib Fat (mm)	Rump Fat (mm)	Retail Beef Yield (%)	IMF (%)	Domestic Maternal Index (\$)	Export Maternal Index (\$)	Northern Terminal Index (\$)	Vealer Terminal Index (\$)
EBV	+7.5	+0.9	-3.7	-1.4	+18	+31	+32	+41	+6	+0.1	+19	+1.6	+2.2	+1.6	-1.4	+0.9	47	62	27	39
Rank	15		10	15									10	10		10	25	25	30	30

Lot 19 BB BETTIS Q077

Ident: SVD0Q077

Born: 15/09/2019

Blk Simm	Angus
PURE	

31/1/21: **740Kg**

TRIPLE C BETTIS S72J
XSIMM BETTIS L2008C
 XSIMM MS LKY ONE J2020A

LANCASTER BLACKJACK B409
SYLVANDEALE H722
 SYLVANDEALE RACHEAL D204

Beef Class Structural Assessment								
F Claw Set	H Claw Set	Front Angle	Rear Angle	Rear Leg Side	Rear Leg Hind	Muscle Score	Sheath	Temp
6	6	6	6	5	6	B-	5	2

A typical Bettis L2008C son great muscling, scans, thick topped, quiet bull. Ideal vealer bull.

February 2021 SIMMENTAL TRANS TASMAN GROUP BREEDPLAN

	Calving Ease DIR (%)	Calving Ease DTRS (%)	Gest Length (days)	Birth Wt. (kg)	200 Day Wt (kg)	400 Day Wt (kg)	600 Day Wt (kg)	Mat Cow Wt (kg)	Milk (kg)	Scrotal Size (cm)	Carcase Wt (kg)	Eye Muscle Area (sq cm)	Rib Fat (mm)	Rump Fat (mm)	Retail Beef Yield (%)	IMF (%)	Domestic Maternal Index (\$)	Export Maternal Index (\$)	Northern Terminal Index (\$)	Vealer Terminal Index (\$)
EBV	+3.4	+8.1	-1.2	-1.0	+18	+22	+19	+14	+5	+0.2	+13	+4.3	+0.8	-0.2	+0.2	+0.5	36	41	16	35
Rank	40	10		20								5	30		20					45

Lot 20 BB ENFORCER Q081

Ident: SVD0Q081

Born: 15/09/2019

Blk Simm	Angus
87.5%	12.5%

31/1/21: **697Kg**

LANCASTER G-FORCE G45
LANCASTER ENFORCER K25
 LANCASTER POPPY H376

LANCASTER COLONEL C297
SYLVANDEALE GWEN F441
 BREWERS GWEN A788

Beef Class Structural Assessment								
F Claw Set	H Claw Set	Front Angle	Rear Angle	Rear Leg Side	Rear Leg Hind	Muscle Score	Sheath	Temp
7	6	6	5	4	5	B	3	2

A more moderate Enforcer son out of our very reliable Gwen cow family, he is thick and meaty. Great calving ease and fabulous carcass traits.

February 2021 SIMMENTAL TRANS TASMAN GROUP BREEDPLAN

	Calving Ease DIR (%)	Calving Ease DTRS (%)	Gest Length (days)	Birth Wt. (kg)	200 Day Wt (kg)	400 Day Wt (kg)	600 Day Wt (kg)	Mat Cow Wt (kg)	Milk (kg)	Scrotal Size (cm)	Carcase Wt (kg)	Eye Muscle Area (sq cm)	Rib Fat (mm)	Rump Fat (mm)	Retail Beef Yield (%)	IMF (%)	Domestic Maternal Index (\$)	Export Maternal Index (\$)	Northern Terminal Index (\$)	Vealer Terminal Index (\$)
EBV	+11.0	+2.7	-3.8	-3.9	+9	+15	+18	+22	+6	+0.1	+16	+2.8	+1.5	+0.6	-0.7	+0.9	41	56	22	34
Rank	3	40	10	1								35	15	30		10	40	30		

Lot 21 BB BETTIS Q083

Ident: SVD0Q083

Born: 17/09/2019

Blk Simm	Angus
75%	25%

31/1/21: **722Kg**

TRIPLE C BETTIS S72J
XSIMM BETTIS L2008C
 XSIMM MS LKY ONE J2020A

ES DAKOTA NK68
ST PAULS DAK WILCOOLA E307
 ARDROSSAN WILCOOLA W53

Beef Class Structural Assessment								
F Claw Set	H Claw Set	Front Angle	Rear Angle	Rear Leg Side	Rear Leg Hind	Muscle Score	Sheath	Temp
6	5	5	6	5	5	B	5	2

Q83 is such a quiet, thick meaty Bettis L2008C son out of a super productive cow. He just gets better every day.

February 2021 SIMMENTAL TRANS TASMAN GROUP BREEDPLAN

	Calving Ease DIR (%)	Calving Ease DTRS (%)	Gest Length (days)	Birth Wt. (kg)	200 Day Wt (kg)	400 Day Wt (kg)	600 Day Wt (kg)	Mat Cow Wt (kg)	Milk (kg)	Scrotal Size (cm)	Carcase Wt (kg)	Eye Muscle Area (sq cm)	Rib Fat (mm)	Rump Fat (mm)	Retail Beef Yield (%)	IMF (%)	Domestic Maternal Index (\$)	Export Maternal Index (\$)	Northern Terminal Index (\$)	Vealer Terminal Index (\$)
EBV	+4.6	+4.5	-2.5	-1.5	+17	+24	+26	+22	+5	0.0	+15	+3.0	+2.1	+1.3	-0.5	+0.6	43	55	23	37
Rank	35	25	25	12								30	10	10		17	35	35	50	40

Lot 22 BB BETTIS Q085

Ident: SVD0Q085

Born: 19/09/2019

Blk Simm	Angus
PURE	

31/1/21: **843Kg**

TRIPLE C BETTIS S72J
XSIMM BETTIS L2008C
 XSIMM MS LKY ONE J2020A

LANCASTER HENRY V111 H408
LANCASTER ERICA L329
 LANCASTER ERICA F023

Beef Class Structural Assessment								
F Claw Set	H Claw Set	Front Angle	Rear Angle	Rear Leg Side	Rear Leg Hind	Muscle Score	Sheath	Temp
5	6	5	6	5	5	B	4	3

A stand out of the drop, with huge EMA and the 2nd heaviest of the spring draft. He has great growth and length, his figures match his phenotype.

February 2021 SIMMENTAL TRANS TASMAN GROUP BREEDPLAN

	Calving Ease DIR (%)	Calving Ease DTRS (%)	Gest Length (days)	Birth Wt. (kg)	200 Day Wt (kg)	400 Day Wt (kg)	600 Day Wt (kg)	Mat Cow Wt (kg)	Milk (kg)	Scrotal Size (cm)	Carcase Wt (kg)	Eye Muscle Area (sq cm)	Rib Fat (mm)	Rump Fat (mm)	Retail Beef Yield (%)	IMF (%)	Domestic Maternal Index (\$)	Export Maternal Index (\$)	Northern Terminal Index (\$)	Vealer Terminal Index (\$)
EBV	+4.3	+6.3	-1.0	-0.3	+27	+43	+39	+30	+9	+0.8	+26	+4.7	+1.2	+0.3	+0.2	+0.3	57	64	28	51
Rank	35	15		30	15	30			0	30	40	3	20	40		30	10	20	25	5

Lot 23 BB BETTIS Q086

Ident: SVD0Q086

Born: 21/09/2019

Blk Simm	Angus
PURE	

31/1/21: **801Kg**

TRIPLE C BETTIS S72J
XSIMM BETTIS L2008C
 XSIMM MS LKY ONE J2020A

MR NLC ICON X0104
CIRCLE EIGHT PEAR J364
 ST PAULS CK D259 PEAR G423

Beef Class Structural Assessment								
F Claw Set	H Claw Set	Front Angle	Rear Angle	Rear Leg Side	Rear Leg Hind	Muscle Score	Sheath	Temp
6	6	6	6	5	5	B	4	1

A thick muscled, excellent scanning bull with a beautiful disposition and a lot of top. Top of the breed for EMA scanning the second highest of the drop.

February 2021 SIMMENTAL TRANS TASMAN GROUP BREEDPLAN

	Calving Ease DIR (%)	Calving Ease DTRS (%)	Gest Length (days)	Birth Wt. (kg)	200 Day Wt (kg)	400 Day Wt (kg)	600 Day Wt (kg)	Mat Cow Wt (kg)	Milk (kg)	Scrotal Size (cm)	Carcase Wt (kg)	Eye Muscle Area (sq cm)	Rib Fat (mm)	Rump Fat (mm)	Retail Beef Yield (%)	IMF (%)	Domestic Maternal Index (\$)	Export Maternal Index (\$)	Northern Terminal Index (\$)	Vealer Terminal Index (\$)
EBV	+6.7	+9.4	-2.4	-1.7	+23	+35	+28	+10	+7	+0.5	+22	+4.9	+0.2	-1.1	+1.1	0.0	54	58	23	49
Rank	20	3	25	10	35	50				0.5		2	50	30		10	30	50	5	

Lot 24 BB BREAKOUT Q088

Ident: SVD0Q088

Born: 22/09/2019

Blk Simm	Angus
62.5%	37.5%

31/1/21: **810Kg**

GW BAR CK BREAKOUT 667Z
LANCASTER BREAKOUT M161
 LANCASTER MISS RIGHT-ON H268

LANCASTER BLACKJACK B409
SYLVANDEALE GALAXY H763
 SYLVANDEALE GALAXY D164

Beef Class Structural Assessment								
F Claw Set	H Claw Set	Front Angle	Rear Angle	Rear Leg Side	Rear Leg Hind	Muscle Score	Sheath	Temp
7	6	6	6	6	5	B	4	1

A beautiful quiet, son out of our Galaxy cow line. Big capacity Simangus bull with plenty of length, softness and weight for age. Full of IMF also.

February 2021 SIMMENTAL TRANS TASMAN GROUP BREEDPLAN

	Calving Ease DIR (%)	Calving Ease DTRS (%)	Gest Length (days)	Birth Wt. (kg)	200 Day Wt (kg)	400 Day Wt (kg)	600 Day Wt (kg)	Mat Cow Wt (kg)	Milk (kg)	Scrotal Size (cm)	Carcase Wt (kg)	Eye Muscle Area (sq cm)	Rib Fat (mm)	Rump Fat (mm)	Retail Beef Yield (%)	IMF (%)	Domestic Maternal Index (\$)	Export Maternal Index (\$)	Northern Terminal Index (\$)	Vealer Terminal Index (\$)
EBV	+6.9	+1.2	-4.0	-0.8	+18	+33	+33	+38	+6	+0.2	+21	+2.6	+1.5	+0.7	+1.1	48	63	26	40	
Rank	20		10	20								45	15	25		5	25	25	35	30

Lot 25 BB BREAKOUT Q089

Ident: BBS0Q089

Born: 24/09/2019

Blk Simm	Angus
62.5%	37.5%

31/1/21: **884Kg**

GW BAR CK BREAKOUT 667Z
LANCASTER BREAKOUT M161
 LANCASTER MISS RIGHT-ON H268

TRIPLE C BETTIS S72J
XSIMM KAURI J2305A
 COOLANA KAURI C052

Beef Class Structural Assessment								
F Claw Set	H Claw Set	Front Angle	Rear Angle	Rear Leg Side	Rear Leg Hind	Muscle Score	Sheath	Temp

Heaviest bull in the drop, enormous weight for age. Top 1% for rib, rump and IMF, top 5% for calving ease and birthweight, he has the figures and is a well balanced, free moving, correct son of Breakout M161.

February 2021 SIMMENTAL TRANS TASMAN GROUP BREEDPLAN																					
	Calving Ease DIR (%)	Calving Ease DTRS (%)	Gest Length (days)	Birth Wt. (kg)	200 Day Wt (kg)	400 Day Wt (kg)	600 Day Wt (kg)	Mat Cow Wt (kg)	Milk (kg)	Scrotal Size (cm)	Carcase Wt (kg)	Eye Muscle Area (sq cm)	Rib Fat (mm)	Rump Fat (mm)	Retail Beef Yield (%)	IMF (%)	Domestic Maternal Index (\$)	Export Maternal Index (\$)	Northern Terminal Index (\$)	Vealer Terminal Index (\$)	
EBV	+10.2	+4.2	-5.2	-2.9	+20	+40	+40	+41	+8	+0.2	+25	+1.4	+3.2	+2.5	-1.9	+1.5	70	97	37	49	
Rank	5	30	5	3	50	35					45		3	3		1	1	1	3	5	

Lot 26 BB BREAKOUT Q090

Ident: SVD0Q090

Born: 25/09/2019

Blk Simm	Angus
75%	25%

31/1/21: **734Kg**

GW BAR CK BREAKOUT 667Z
LANCASTER BREAKOUT M161
 LANCASTER MISS RIGHT-ON H268

LANCASTER AJAX
SYLVANDEALE GALAXY H766
 BREWERS GALAXY Z473

Beef Class Structural Assessment								
F Claw Set	H Claw Set	Front Angle	Rear Angle	Rear Leg Side	Rear Leg Hind	Muscle Score	Sheath	Temp
6	6	6	7	6	6	B	4	1

this bulls temperament has to be seen to be believed, he is so naturally quiet he will become one of the family. He has beautiful length and muscling, a more early maturing, very sound bull.

February 2021 SIMMENTAL TRANS TASMAN GROUP BREEDPLAN																					
	Calving Ease DIR (%)	Calving Ease DTRS (%)	Gest Length (days)	Birth Wt. (kg)	200 Day Wt (kg)	400 Day Wt (kg)	600 Day Wt (kg)	Mat Cow Wt (kg)	Milk (kg)	Scrotal Size (cm)	Carcase Wt (kg)	Eye Muscle Area (sq cm)	Rib Fat (mm)	Rump Fat (mm)	Retail Beef Yield (%)	IMF (%)	Domestic Maternal Index (\$)	Export Maternal Index (\$)	Northern Terminal Index (\$)	Vealer Terminal Index (\$)	
EBV	+6.6	+0.7	-3.5	-1.0	+16	+25	+26	+30	+7	-0.2	+15	+2.1	+1.6	+0.9	-0.7	+0.9	41	53	23	36	
Rank	20		10	20									10	20		10	40	35	50	45	

Lot 27 BB BREAKOUT Q091

Ident: SVD0Q091

Born: 25/09/2019

Blk Simm	Angus
75%	25%

31/1/21: **664Kg**

GW BAR CK BREAKOUT 667Z
LANCASTER BREAKOUT M161
 LANCASTER MISS RIGHT-ON H268

LANCASTER COLOSSUS C035
SYLVANDEALE GWEN F534
 SYLVANDEALE GWEN D124

Beef Class Structural Assessment								
F Claw Set	H Claw Set	Front Angle	Rear Angle	Rear Leg Side	Rear Leg Hind	Muscle Score	Sheath	Temp
5	5	5	5	4	5	B-	4	2

A more moderate Breakout M161 son, great muscle and an ideal vealer bull.

February 2021 SIMMENTAL TRANS TASMAN GROUP BREEDPLAN																					
	Calving Ease DIR (%)	Calving Ease DTRS (%)	Gest Length (days)	Birth Wt. (kg)	200 Day Wt (kg)	400 Day Wt (kg)	600 Day Wt (kg)	Mat Cow Wt (kg)	Milk (kg)	Scrotal Size (cm)	Carcase Wt (kg)	Eye Muscle Area (sq cm)	Rib Fat (mm)	Rump Fat (mm)	Retail Beef Yield (%)	IMF (%)	Domestic Maternal Index (\$)	Export Maternal Index (\$)	Northern Terminal Index (\$)	Vealer Terminal Index (\$)	
EBV	+8.0	+0.6	-4.2	-2.4	+9	+14	+13	+18	+3	-0.6	+5	+1.0	+2.3	+1.8	-1.5	+1.0	33	44	18	27	
Rank	15		7	5									5	7		6					

Lot 28 BB BREAKOUT Q092

Ident: SVD0Q092

Born: 26/09/2019

Blk Simm	Angus
75%	25%

31/1/21: **821Kg**

GW BAR CK BREAKOUT 667Z
LANCASTER BREAKOUT M161
 LANCASTER MISS RIGHT-ON H268

 LANCASTER COLONEL C297
SYLVANDEALE ALETA H742
 SYLVANDEALE ALETA C052

Beef Class Structural Assessment								
F Claw Set	H Claw Set	Front Angle	Rear Angle	Rear Leg Side	Rear Leg Hind	Muscle Score	Sheath	Temp
6	6	5	6	5	5	B-	5	1

One of the heaviest Breakout M161 sons in this years sale, Q92 is a long bodied bull with heaps of carcass, a sound, stylish calf. Probably the pick of the Breakout calves.

February 2021 SIMMENTAL TRANS TASMAN GROUP BREEDPLAN

	Calving Ease DIR (%)	Calving Ease DTRS (%)	Gest Length (days)	Birth Wt. (kg)	200 Day Wt (kg)	400 Day Wt (kg)	600 Day Wt (kg)	Mat Cow Wt (kg)	Milk (kg)	Scrotal Size (cm)	Carcass Wt (kg)	Eye Muscle Area (sq cm)	Rib Fat (mm)	Rump Fat (mm)	Retail Beef Yield (%)	IMF (%)	Domestic Maternal Index (\$)	Export Maternal Index (\$)	Northern Terminal Index (\$)	Vealer Terminal Index (\$)
EBV	+6.8	+0.6	-3.5	-0.5	+19	+33	+34	+41	+6	+0.2	+21	+1.6	+1.8	+1.3	-1.1	+0.8	47	60	27	40
Rank	20		10	25									10	10		10	25	25	30	30

Lot 29 BB BREAKOUT Q093

Ident: SVD0Q093

Born: 07/10/2019

Blk Simm	Angus
75%	25%

31/1/21: **728Kg**

GW BAR CK BREAKOUT 667Z
LANCASTER BREAKOUT M161
 LANCASTER MISS RIGHT-ON H268

 LANCASTER AJAX
SYLVANDEALE GWEN F536
 BREWERS GWEN C076

Beef Class Structural Assessment								
F Claw Set	H Claw Set	Front Angle	Rear Angle	Rear Leg Side	Rear Leg Hind	Muscle Score	Sheath	Temp
5	6	5	6	4	5	B	4	2

Extremely high scanning bull, one of the biggest EMA's in his group. Near perfect structure scores and an absolute muscle machine.

February 2021 SIMMENTAL TRANS TASMAN GROUP BREEDPLAN

	Calving Ease DIR (%)	Calving Ease DTRS (%)	Gest Length (days)	Birth Wt. (kg)	200 Day Wt (kg)	400 Day Wt (kg)	600 Day Wt (kg)	Mat Cow Wt (kg)	Milk (kg)	Scrotal Size (cm)	Carcass Wt (kg)	Eye Muscle Area (sq cm)	Rib Fat (mm)	Rump Fat (mm)	Retail Beef Yield (%)	IMF (%)	Domestic Maternal Index (\$)	Export Maternal Index (\$)	Northern Terminal Index (\$)	Vealer Terminal Index (\$)
EBV	+9.2	+2.6	-3.7	-2.3	+13	+25	+23	+25	+5	-0.3	+19	+3.8	+1.5	+0.7	+0.1	+0.7	48	60	25	41
Rank	10	40	10	5								10	15	25		15	25	25	40	25

Lot 30 BB BREAKOUT Q094

Ident: SVD0Q094

Born: 08/10/2019

Blk Simm	Angus
75%	25%

31/1/21: **744Kg**

GW BAR CK BREAKOUT 667Z
LANCASTER BREAKOUT M161
 LANCASTER MISS RIGHT-ON H268

 LANCASTER BLACKJACK B409
SYLVANDEALE NORAH H738
 BREWERS NORAH Y444

Beef Class Structural Assessment								
F Claw Set	H Claw Set	Front Angle	Rear Angle	Rear Leg Side	Rear Leg Hind	Muscle Score	Sheath	Temp
7	6	7	6	5	5	B-	4	2

With great weight for age, soundness, quiet disposition, calving ease and plenty of meat on his moderate frame, Q94 will be an excellent addition to your program.

February 2021 SIMMENTAL TRANS TASMAN GROUP BREEDPLAN

	Calving Ease DIR (%)	Calving Ease DTRS (%)	Gest Length (days)	Birth Wt. (kg)	200 Day Wt (kg)	400 Day Wt (kg)	600 Day Wt (kg)	Mat Cow Wt (kg)	Milk (kg)	Scrotal Size (cm)	Carcass Wt (kg)	Eye Muscle Area (sq cm)	Rib Fat (mm)	Rump Fat (mm)	Retail Beef Yield (%)	IMF (%)	Domestic Maternal Index (\$)	Export Maternal Index (\$)	Northern Terminal Index (\$)	Vealer Terminal Index (\$)
EBV	+8.7	+3.1	-3.6	-1.6	+16	+29	+26	+30	+8	+0.3	+19	+2.9	+0.9	-0.2	+0.1	+0.7	48	59	24	41
Rank	10	35	10	10								35	25		15	25	30	45	25	

Lot 31 BB STAR Q097

Ident: SVD0Q097

Born: 12/10/2019

Blk Simm	Angus
PURE	

31/1/21: **782Kg**

CIRCLE C ANTOINETTES STAR
ST PAULS STAR GAZER G421
ST PAULS RO PEAR D270

LANCASTER EARL E165
LANCASTER LIBBY G243
LANCASTER LIBBY D199

Beef Class Structural Assessment								
F Claw Set	H Claw Set	Front Angle	Rear Angle	Rear Leg Side	Rear Leg Hind	Muscle Score	Sheath	Temp
6	6	6	6	5	6	B-	5	2

With his top end weight gain and fat cover Q97 is a clone of his sire Star, thickness, length and depth for days. He is out of a very productive cow we purchased from Lancaster Black Simmentals.

February 2021 SIMMENTAL TRANS TASMAN GROUP BREEDPLAN

	Calving Ease DIR (%)	Calving Ease DTRS (%)	Gest Length (days)	Birth Wt (kg)	200 Day Wt (kg)	400 Day Wt (kg)	600 Day Wt (kg)	Mat Cow Wt (kg)	Milk (kg)	Scrotal Size (cm)	Carcase Wt (kg)	Eye Muscle Area (sq cm)	Rib Fat (mm)	Rump Fat (mm)	Retail Beef Yield (%)	IMF (%)	Domestic Maternal Index (\$)	Export Maternal Index (\$)	Northern Terminal Index (\$)	Vealer Terminal Index (\$)
EBV	-0.4	-1.2	-1.8	+0.8	+25	+46	+54	+48	+6	+0.2	+24	+0.1	+1.3	+0.4	-1.6	+0.9	37	48	27	31
Rank			40	45	25	25	30	40			50		15	35		10	50	45	30	

Lot 32 BB STAR Q098

Ident: SVD0Q098

Born: 17/10/2019

Blk Simm	Angus
75%	25%

31/1/21: **809Kg**

CIRCLE C ANTOINETTES STAR
ST PAULS STAR GAZER G421
ST PAULS RO PEAR D270

LANCASTER COLOSSUS C035
SYLVANDEALE H776
SYLVANDEALE MISHKA E326

Beef Class Structural Assessment								
F Claw Set	H Claw Set	Front Angle	Rear Angle	Rear Leg Side	Rear Leg Hind	Muscle Score	Sheath	Temp
6	6	5	6	5	6	B	3	2

Q98 is David's highest rated bull of the spring drop. He has great scans, excellent growth, big capacity and beautiful nature. We very nearly retained him as he is out of our very productive Mishka, he goes back to some of our best cows.

February 2021 SIMMENTAL TRANS TASMAN GROUP BREEDPLAN

	Calving Ease DIR (%)	Calving Ease DTRS (%)	Gest Length (days)	Birth Wt (kg)	200 Day Wt (kg)	400 Day Wt (kg)	600 Day Wt (kg)	Mat Cow Wt (kg)	Milk (kg)	Scrotal Size (cm)	Carcase Wt (kg)	Eye Muscle Area (sq cm)	Rib Fat (mm)	Rump Fat (mm)	Retail Beef Yield (%)	IMF (%)	Domestic Maternal Index (\$)	Export Maternal Index (\$)	Northern Terminal Index (\$)	Vealer Terminal Index (\$)
EBV	+0.1	-0.2	-2.3	+0.7	+26	+51	+56	+49	+7	+0.3	+30	+2.6	+0.7	-0.4	-0.2	+1.0	48	60	31	40
Rank			30	45	20	15	25	40			30	45	30			7	25	25	15	30

Lot 33 BB STAR Q103

Ident: SVD0Q103

Born: 20/10/2019

Blk Simm	Angus
PURE	

31/1/21: **796Kg**

CIRCLE C ANTOINETTES STAR
ST PAULS STAR GAZER G421
ST PAULS RO PEAR D270

LANCASTER AJAX
SYLVANDEALE RACHEAL D146
BREWERS RACHEAL U001

Beef Class Structural Assessment								
F Claw Set	H Claw Set	Front Angle	Rear Angle	Rear Leg Side	Rear Leg Hind	Muscle Score	Sheath	Temp
6	6	6	6	4	6	B-	4	1

One of the best Star sons in the sale, Q103 has great scans and is long as a train. He will be perfect for breeding feeder cattle and replacement females and David tips him to grow into a cracker of a sire.

February 2021 SIMMENTAL TRANS TASMAN GROUP BREEDPLAN

	Calving Ease DIR (%)	Calving Ease DTRS (%)	Gest Length (days)	Birth Wt (kg)	200 Day Wt (kg)	400 Day Wt (kg)	600 Day Wt (kg)	Mat Cow Wt (kg)	Milk (kg)	Scrotal Size (cm)	Carcase Wt (kg)	Eye Muscle Area (sq cm)	Rib Fat (mm)	Rump Fat (mm)	Retail Beef Yield (%)	IMF (%)	Domestic Maternal Index (\$)	Export Maternal Index (\$)	Northern Terminal Index (\$)	Vealer Terminal Index (\$)
EBV	-1.0	+2.8	-2.5	+1.0	+24	+47	+52	+49	+5	-0.1	+28	+2.6	+1.4	+0.6	-0.4	+0.8	47	59	29	36
Rank		40	25		30	20	35	40			35	45	15	30		10	25	30	25	45

Lot 34 BB ENFORCER Q106

Ident: BBSOQ106

Born: 27/10/2019

Blk Simm	Angus
37.5%	62.5%

31/1/21: **715Kg**

LANCASTER G-FORCE G45
LANCASTER ENFORCER K25
 LANCASTER POPPY H376

ARDROSSAN EQUATOR A241
YANCOWINNA H5
 LANDFALL DAME A56

Beef Class Structural Assessment								
F Claw Set	H Claw Set	Front Angle	Rear Angle	Rear Leg Side	Rear Leg Hind	Muscle Score	Sheath	Temp
6	6	5	6	5	5	B-	3	1

Q106 is a Simangus bull full of IMF and fats, he has enormous calving ease and super low birth. He is one of the fabulous calves out of the very functional cows we purchased at Yancowinna Angus, his extra softness and doing ability have made him a crowd favorite.

February 2021 SIMMENTAL TRANS TASMAN GROUP BREEDPLAN

	Calving Ease DIR (%)	Calving Ease DTRS (%)	Gest Length (days)	Birth Wt. (kg)	200 Day Wt (kg)	400 Day Wt (kg)	600 Day Wt (kg)	Mat Cow Wt (kg)	Milk (kg)	Scrotal Size (cm)	Carcase Wt (kg)	Eye Muscle Area (sq cm)	Rib Fat (mm)	Rump Fat (mm)	Retail Beef Yield (%)	IMF (%)	Domestic Maternal Index (\$)	Export Maternal Index (\$)	Northern Terminal Index (\$)	Vealer Terminal Index (\$)
EBV	+9.6	+2.9	-6.8	-5.4	+4	+16	+27	+29	+6	+0.4	+14	-0.7	+3.7	+3.0	-3.0	+2.6	0	0	0	0
Rank	7	35	1	1									2	3		1	15	1	20	

Lot 35 BB ENFORCER Q107

Ident: SVD0Q107

Born: 28/10/2019

Blk Simm	Angus
87.5%	12.5%

31/1/21: **716Kg**

LANCASTER G-FORCE G45
LANCASTER ENFORCER K25
 LANCASTER POPPY H376

GW LUCKY MAN 644N
SYLVANDALE LESLIE F507
 SYLVANDALE LESLIE D211

Beef Class Structural Assessment								
F Claw Set	H Claw Set	Front Angle	Rear Angle	Rear Leg Side	Rear Leg Hind	Muscle Score	Sheath	Temp
6	6	6	6	5	5	C+	4	2

A really thick deep barrelled Enforcer son with a great disposition. Q107 is full of calving ease, low birth, fat and IMF.

February 2021 SIMMENTAL TRANS TASMAN GROUP BREEDPLAN

	Calving Ease DIR (%)	Calving Ease DTRS (%)	Gest Length (days)	Birth Wt. (kg)	200 Day Wt (kg)	400 Day Wt (kg)	600 Day Wt (kg)	Mat Cow Wt (kg)	Milk (kg)	Scrotal Size (cm)	Carcase Wt (kg)	Eye Muscle Area (sq cm)	Rib Fat (mm)	Rump Fat (mm)	Retail Beef Yield (%)	IMF (%)	Domestic Maternal Index (\$)	Export Maternal Index (\$)	Northern Terminal Index (\$)	Vealer Terminal Index (\$)
EBV	+9.0	+1.5	-3.7	-3.2	+15	+27	+36	+40	+7	0.0	+18	+0.6	+1.4	+0.5	-1.5	+1.7	0	0	0	0
Rank	10	50	10	3									15	30		1	25	7	20	45

Lot 37 BB ENFORCER Q110

Ident: SVD0Q110

Born: 30/10/2019

Blk Simm	Angus
62.5%	37.5%

31/1/21: **757Kg**

LANCASTER G-FORCE G45
LANCASTER ENFORCER K25
 LANCASTER POPPY H376

SRS RIGHT ON 22R
ST PAULS RO IRIS F253
 ST PAULS HM IRIS B111

Beef Class Structural Assessment								
F Claw Set	H Claw Set	Front Angle	Rear Angle	Rear Leg Side	Rear Leg Hind	Muscle Score	Sheath	Temp
7	6	6	6	5	5	B-	4	2

Like so many of the Enforcer sons Q110's raw IMF scans are better than the bulk of the angus bulls out there. He is in the top 1% of the breed for IMF and birthweight. Combined with great carcase and positive rib and rump fats this bull will out perform most angus bulls on offer this year.

February 2021 SIMMENTAL TRANS TASMAN GROUP BREEDPLAN

	Calving Ease DIR (%)	Calving Ease DTRS (%)	Gest Length (days)	Birth Wt. (kg)	200 Day Wt (kg)	400 Day Wt (kg)	600 Day Wt (kg)	Mat Cow Wt (kg)	Milk (kg)	Scrotal Size (cm)	Carcase Wt (kg)	Eye Muscle Area (sq cm)	Rib Fat (mm)	Rump Fat (mm)	Retail Beef Yield (%)	IMF (%)	Domestic Maternal Index (\$)	Export Maternal Index (\$)	Northern Terminal Index (\$)	Vealer Terminal Index (\$)
EBV	+9.4	+0.9	-4.8	-3.9	+11	+28	+32	+28	+6	+0.2	+19	+0.6	+2.6	+1.9	-2.3	+2.4	0	0	0	0
Rank	7		4	1									5	5		1	10	4	15	50

Lot 38 BB ENFORCER Q111

Ident: BBSOQ111

Born: 04/11/2019

Blk Simm	Angus
37.5%	62.5%

31/1/21: **710Kg**

LANCASTER G-FORCE G45
LANCASTER ENFORCER K25
 LANCASTER POPPY H376

YANCOWINNA E5
YANCOWINNA H267
 YANCOWINNA C158

Beef Class Structural Assessment								
F Claw Set	H Claw Set	Front Angle	Rear Angle	Rear Leg Side	Rear Leg Hind	Muscle Score	Sheath	Temp
7	6	6	6	5	5	C+	4	2

Out of one of the pick cows at the Yancowinna angus dispersal, this bull has superb calving and carcass data. A top indexing bull, just imagine what he would make at an angus sale.

February 2021 SIMMENTAL TRANS TASMAN GROUP BREEDPLAN

	Calving Ease DIR (%)	Calving Ease DTRS (%)	Gest Length (days)	Birth Wt. (kg)	200 Day Wt (kg)	400 Day Wt (kg)	600 Day Wt (kg)	Mat Cow Wt (kg)	Milk (kg)	Scrotal Size (cm)	Carcass Wt (kg)	Eye Muscle Area (sq cm)	Rib Fat (mm)	Rump Fat (mm)	Retail Beef Yield (%)	IMF (%)	Domestic Maternal Index (\$)	Export Maternal Index (\$)	Northern Terminal Index (\$)	Vealer Terminal Index (\$)
EBV	+9.6	+1.7	-7.3	-5.4	+6	+16	+30	+31	-	-0.4	+16	-0.5	+3.7	+3.0	-2.8	+2.5	0	0	0	0
Rank	7	50	1	1									2	3		1	15	1	15	

Lot 39 BB STAR Q115

Ident: SVD0Q115

Born: 05/11/2019

Blk Simm	Angus
PURE	

31/1/21: **727Kg**

CIRCLE C ANTOINETTES STAR
ST PAULS STAR GAZER G421
 ST PAULS RO PEAR D270

CO-OP Z422
SYLVANDEALE NORAH E277
 BREWERS NORAH B028

Beef Class Structural Assessment								
F Claw Set	H Claw Set	Front Angle	Rear Angle	Rear Leg Side	Rear Leg Hind	Muscle Score	Sheath	Temp
6	6	6	7	5	5	C+	4	1

A smooth, long Star son with fabulous growth and IMF out of one of our foundation Norah lines.

February 2021 SIMMENTAL TRANS TASMAN GROUP BREEDPLAN

	Calving Ease DIR (%)	Calving Ease DTRS (%)	Gest Length (days)	Birth Wt. (kg)	200 Day Wt (kg)	400 Day Wt (kg)	600 Day Wt (kg)	Mat Cow Wt (kg)	Milk (kg)	Scrotal Size (cm)	Carcass Wt (kg)	Eye Muscle Area (sq cm)	Rib Fat (mm)	Rump Fat (mm)	Retail Beef Yield (%)	IMF (%)	Domestic Maternal Index (\$)	Export Maternal Index (\$)	Northern Terminal Index (\$)	Vealer Terminal Index (\$)
EBV	+1.3	+1.1	-1.8	+0.9	+22	+41	+47	+39	+6	+0.3	+22	+1.0	+0.6	-0.2	-0.8	+0.7	0	0	0	0
Rank			40	45	40	35	45						35			15	50	45	40	

Lot 40 BB ENFORCER Q123

Ident: SVD0Q123

Born: 07/11/2019

Blk Simm	Angus
75%	25%

31/1/21: **635Kg**

LANCASTER G-FORCE G45
LANCASTER ENFORCER K25
 LANCASTER POPPY H376

CNS DREAM ON L186
ST PAULS LOWAN E333
 ST PAULS MIF LOWAN B203

Beef Class Structural Assessment								
F Claw Set	H Claw Set	Front Angle	Rear Angle	Rear Leg Side	Rear Leg Hind	Muscle Score	Sheath	Temp
6	6	5	6	5	5	C+	4	1

A perfect heifer bull, breed leading low birth, very quiet, stylish young bull out of super productive E333.

February 2021 SIMMENTAL TRANS TASMAN GROUP BREEDPLAN

	Calving Ease DIR (%)	Calving Ease DTRS (%)	Gest Length (days)	Birth Wt. (kg)	200 Day Wt (kg)	400 Day Wt (kg)	600 Day Wt (kg)	Mat Cow Wt (kg)	Milk (kg)	Scrotal Size (cm)	Carcass Wt (kg)	Eye Muscle Area (sq cm)	Rib Fat (mm)	Rump Fat (mm)	Retail Beef Yield (%)	IMF (%)	Domestic Maternal Index (\$)	Export Maternal Index (\$)	Northern Terminal Index (\$)	Vealer Terminal Index (\$)
EBV	+12.3	+5.2	-5.6	-5.1	+6	+11	+18	+15	+4	-0.3	+9	-1.3	+2.7	+1.7	-2.8	+1.9	0	0	0	0
Rank	2	20	2	1									4	7		1	40	15		

Lot 41 BB BREAKOUT Q069

Ident: SVD0Q069

Born:	Blk Simm	Angus
	75%	25%

31/1/21: **794Kg**

GW BAR CK BREAKOUT 667Z
LANCASTER BREAKOUT M161
 LANCASTER MISS RIGHT-ON H268

 LANCASTER AJAX
SYLVANDEALE NATASHA D188
 BREWERS NATASHA T133

Beef Class Structural Assessment								
F Claw Set	H Claw Set	Front Angle	Rear Angle	Rear Leg Side	Rear Leg Hind	Muscle Score	Sheath	Temp
6	6	5	6	5	6	B	4	2

The only fault this bull has is that he is red, he would have been retained if he had been black. He oozes softness, muscle and length. Powerful thick muscular bull who gained a lot of attention during Beef Week.

	Calving Ease DIR (%)	Calving Ease DTRS (%)	Gest Length (days)	Birth Wt. (kg)	200 Day Wt (kg)	400 Day Wt (kg)	600 Day Wt (kg)	Mat Cow Wt (kg)	Milk (kg)	Scrotal Size (cm)	Carcass Wt (kg)	Eye Muscle Area (sq cm)	Rib Fat (mm)	Rump Fat (mm)	Retail Beef Yield (%)	IMF (%)	Domestic Maternal Index (\$)	Export Maternal Index (\$)	Northern Terminal Index (\$)	Vealer Terminal Index (\$)
EBV	+5.0	+1.0	-3.8	-0.6	+16	+30	+31	+34	+7	-0.2	+17	+2.2	+1.3	+0.8	-0.4	+1	\$43	\$54	\$24	\$35
Rank	30	30	10	25									15	20		8	35	35	50	45



Henry Brewer with our Exciting new sire purchased this year Lancaster Quarterback Q347

7 LCS QUARTERBACK Q347

ASA# (3721821) • Tattoo: Q347G • BD: 25/06/2019
 HPS: Homo Polled • COLOUR: Homo Black

— LCS MR FIXIT F307
 Sire: LCS HIGH PROFILE H338
 — LANCASTER ERICA A329
 — TRIPLE C SINGLETARY S3H
 Dam: XSIM MISS CHARM H2087Z
 — GW MISS CHARM 645U

	CE	BW	WW	YW	ADG	MCE	MM	MWV	STAY	DOC	CW	YG	MB	BF	REA	API	TI
EPDs	13.8	1.7	78	123.3	0.28	6.7	31.4	70.4	16.8	19.7	36.8	-0.5	0.19	-0.116	1.01	133.5	81.3
Rank	15	50	45	38	20	35	10	15	50	1	25	15	30	10	20	25	25



You will appreciate the sheer mass of this bull come sale day, has a bit of extra frame but carries it so well. His depth and softness is fantastic. Very solid figures across the board, incredible calving ease to growth spread and

Top 1% docility.

2020 BrewerBeef 5th Annual Sale

Thanks to All Bidders and Underbidders



BrewerBeef

BLACK SIMMENTALS & ANGUS HYBRIDS

LOT	BID No.	\$	LOT	BID No.	\$	LOT	BID No.	\$
1		W/D	10	4	4000	19	3	4000
2	4	4000	11	19	7500	20	8	6000
3	16	9000	12		4000	21	7	5500
4	10	4500	13	10	4000	22	12	6000
5	13	10,000	14	14	5500	2		70.00
6		W/D	15		5000			W/D
7		W/D	16	19		14		6000
8	10	4000	17	6	4000			W/D
9	16	9000	18	8	6000			5000

