

# YERWAL ESTATE

Simmental and Angus Stud

## 21st Annual Bull Sales

GUEST VENDOR



**MT MOONEY**  
SIMMENTALS

Simmental Tuesday 7th February 2023  
Angus Monday 13th February 2023

PROVEN GENETICS • PERFORMANCE • PROFIT

# SIMMENTAL FEATURE LOTS

**Lot 6**

**Yerwal Estate Spunky AMOPS305**



**Lot 7**

**Mt Mooney Parker W Simpson ZOMPS029**



**Lot 13**

**Yerwal Estate Super Man S210**





**Simmental and Angus Stud**

## **21st Annual Bull Sales**

### **Online Simmental Sale**

**Tuesday 7th February 2023 via Elite Auctions**  
**8.00am to 8.00pm (SA Time)**

**Selling 18 Traditional, Black Simmental and SimAngus bulls**  
**including guest vendor Mt Mooney Simmentals**



### **On Farm Angus Sale**

**Monday 13th February 2023 at 10.30am**  
**also available online via Elite Auctions**

**Selling 43 HBR Angus bulls**



**Richard Jennings M 0428 616 554**

**Gordon Wood M 0408 813 215**

**Richard Miller M 0428 849 327**

**Please contact Regan Burow**  
**for further information and private inspections**

Lawrey's Road, Lucindale SA 5272

PMB 73, Naracoorte SA 5271

T/F 08 8769 6168 M 0419 817 669

E [regan@yerwalestate.com](mailto:regan@yerwalestate.com)

W [www.yerwalestateangus.com.au](http://www.yerwalestateangus.com.au)





# WELCOME

The last 12 months has seen amazing results for both stud and commercial producers. This year marks our 21st on farm Angus Sale. All Angus, SimAngus and Simmental bulls have been tick blooded, 7 in 1, vaccinated for Botulism, Pestivirus and tested to ensure negative results. Both our line ups have exciting pedigrees throughout the catalogue to offer a range of heifer and cow mating suitable sires. Our sale drafts have been selected to ensure only functional bulls that can last the distance make the draft.



## Highlights for 2022 at Yerwal:

- Our top priced Angus bull sold for \$15,000 to Pat Harold and Lachlan Mckenzie.
- 91% clearance for our Angus sale with a sale average of \$8,400 enabled commercial producers to access bulls from \$5,000-\$15,000.
- Our top priced online Simmental Bull went to Charters Towers, Queensland to Appleton Cattle Co for \$17,500 who run a Simmental stud and large commercial operation.
- Our top priced Queensland Simmental Bull Sale (QSBS) Simmental bull sold for \$34,000 going to Jericho, Queensland to D and A Humphries who run a large scale Simbrah program.
- 100% clearance of our bulls at both our online Simmental and QSBS sale. Bulls sold from \$5,000-\$34,000 for 2022. There was a good spread of number of bulls at different price ranges with quality bulls for all ranges of budgets.
- We entered our first Central Queensland carcass competition in conjunction with JJ fitting with one of our purebred Simmental Steers.
- We donated two Simmental x Angus steers for students at Lucindale Area School and Urrabrae Agricultural School.

## Simmentals

Our online sale this year includes; Black Simmental, Traditional Simmental, Red Simmental and SimAngus bull draft. This sale will be conducted through the Elite Livestock's online platform.

Once again we invite Mt Mooney Simmentals to our Simmental sale with four lots; three traditional simmentals and one SimAngus. Quentin and Renee run a stud Simmental operation and large commercial herd based in Culburra, South Australia.

## SimAngus Program:

Our SimAngus bulls offers our clients to access the superior weight gain, muscling, meat yield and maternal traits of the Simmental with the meat quality, polled and solid coat colour attributes of the Angus. SimAngus are able to finish well in the pasture or on the feedlot operations. These bulls are sired by Yerwal Estate Lotto Black Simmental bull and out of our Yerwal Angus Cows. They will be offered in our online Simmental Sale 7/2/23 and at the February All Breeds Sale in Gracemere, Queensland 14/2/23.



## **Angus**

This year we go live for the first time offering our clients the opportunity to bid online in the comfort of their home to view our on farm Angus Auction. 43 HBR bulls will be on offer with sale photos and videos available for viewing each lots on Elite Livestock (see page 7 for further instructions).

Our Angus program has some exciting bulls in the draft that include AI sires Chisum and Niagara. Progeny from Sterita Park Resolution L195 continues to be consistent and last the distance. Sprys Supreme sons offer a great spread of data throughout. Home bred sires Yerwal P200, P263, P264 and P4 have been selected on data and phenotype offering a good balance. We value good footed cattle and believe everything starts from the ground up and needs to last the distance; no hoof trimming of sale draft. This year we have opted to DNA profile all sale bulls to provide our clients with the most accurate data possible.

## **What's happening next at Yerwal?**

- Progeny have hit the ground by Texas Quinella Q711 sired by Beastmode. His first sons will sell in 2024.
- The new purchase of stud sire Alkira Renegade R11 will offer our clients calving ease bulls to select from our draft ideal for their heifer programs with the first of his sons being available for 2024.
- Our Angus Embryo program currently includes sires Texas IceMan and Poss Deadwood.
- Our Simmental Embryo program includes new semen sire Kerrah Dictator imported from New Zealand.

## **Save the dates for 2023**

In addition to our online Simmental Sale and on farm Angus Sale a selection of the Yerwal Angus, SimAngus, Red, Black and Traditional Bulls will be available at the following sales:

- 14th Feb 2023, February All Breeds held at Gracemere CQLX, Queensland offering Angus, SimAngus, Red, Black and Traditional Simmentals.
- 23rd June 2023 Agrow Emerald, Queensland offering Traditional Simmentals.
- 31st July 2023 Queensland Simmental Bull Sale 20 offering Traditional, Red and Black Simmentals.

Thank you again for continuing to support our breeding program from all of us here Yerwal Estate Angus and Simmental Stud.

## **Trevor, Regan, Connie and family**





## Nutrien Ag Solutions Stud Stock

We work hard to know livestock best.  
We are always here to support our clients  
with the full backing of the stud stock team.

**Andrew Wilson**  
0439 354 228

**Leo Redden**  
0408 806 021

**Gordon Wood**  
0408 813 215

**Richard Miller**  
0428 849 327



[NutrienAgSolutions.com.au](https://NutrienAgSolutions.com.au)

# GUEST VENDOR



**MT MOONEY**  
SIMMENTALS

Mt Mooney Simmentals was established in 2008 after trialling many different British and European cattle breeds in our commercial beef operation. Ultimately, we landed with the Simmental breed as it possessed not only the desired attributes for our commercial beef operation but also aligned with our desire to enter the stud breeding market.

In addition to its own stud breeding enterprise Mt Mooney currently runs 200 commercial beef cows on two properties in the upper south east of South Australia (Tintinara). This commercial focus has enabled Mt Mooney to produce Simmental Bulls that achieve exceptional carcass results.

Over time Mt Mooney has purchased both heifers and bulls from some of the leading Simmental studs in the country and have undertaken an extensive embryo transplant program which has already displayed some very promising results. These years of effort, hard work and genetic selection has meant that Mt Mooney now has the consistency and volume of bulls to expand nationally, now also selling bulls successfully into QLD and NSW.

Mt Mooney will have four bulls on display for Beef Week this year at Yerwal Estate. Three traditional, and one SimAngus (registered). The three traditional bulls are all very similar in type, long and soft with plenty of carcass. Our SimAngus has always been a stand out, that will add extra thump into his calves with the Simmental infused in him.

The bulls have all been tick blooded, vaccinated, drenched, semen tested and are ready to go straight to work.

This year both Mt Mooney and Yerwal Estate bulls will be available for sale online via Elite Livestock. Come along to our open day and find out more on how to register for bidding or to view the sale on your phone or device. Updated weight and scan data of sale bulls will be available on the day.

Mt Mooney will work in conjunction with Yerwal Estate on getting your bulls delivered to you.

**Renee and Quentin Mooney**  
**Mt Mooney Simmentals**

M 0438 011 800  
E [qjrj@mtmooney.com.au](mailto:qjrj@mtmooney.com.au)





# IMPORTANT INFORMATION

## Inspections

The **Simmental** and **Angus** sale bulls will be available for inspection at the on farm SA Beef Field Day on Monday the 6th of February 2023 from 9am (SA time). The **Angus** sale bulls will be available for inspection on sale day, Monday 13th February 2023 from 9am (SA time). Complimentary refreshments will be available at the sales to all visitors.

## Photos and Video

Photos published in this catalogue of the bulls were captured the 4th of January 2023 by GB Creative. Videos of each lot will be uploaded on Elite Livestock website closer to the sale date.

## Transport

Complimentary transport is available within South Australia, Victoria, New South Wales and southern Queensland and can be arranged upon request.

## Buyers Registrations

Buyers are required to register with the selling agents prior to the commencement of the sale and to display their registration numbers at the fall of the hammer.

Elite Livestock registration instructions will provide buyers more details on how to register prior to the sale (see page 7). If there are any issues with registering or navigation the auction platform please call 1300 259 742 for further support.

## Sale Conditions

Conditions of sale by auction in South Australia apply. All sale lots are sold exclusive of GST. Please contact your selling agents to arrange phone bidding.

## Agent Rebate

A 3% rebate is offered for outside agents if prospects are introduced to the selling agents in writing at least 24 hours prior to the sale.

## Suffix Key

The suffix displayed at the end of each animal's name indicates the DNA parentage verification that has been conducted by Angus Australia.

**PV:** both parents have been verified by DNA.

**SV:** the sire has been verified by DNA.

**DV:** the dam has been verified by DNA.

**#:** DNA verification has not been conducted.

**E:** DNA verification has identified that the sire and/or dam may possibly be incorrect, but this cannot be confirmed conclusively.

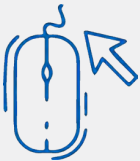
## Disclaimer

Every effort has been taken to ensure that the information in this sale catalogue is correct at the time of publication. All reasonable care has been taken in its preparation however no responsibility is taken for any inadvertent errors or omissions.

# HOW TO REGISTER with ELITE LIVESTOCK AUCTIONS



Simply go to  
**www.elitelivestockauctions.com.au**  
using your desktop, laptop, iPad, iPhone  
or android device.



Click on the **"Sign Up"** page / link



Create a bidding profile using the bidder  
registration page.  
*(You can either register as a livestock  
agent, company or private buyer)*



Agree to the Elite Livestock Auctions  
Terms & Conditions and the Selling  
Agents Sale Terms & Conditions as  
printed in the official Sale Catalogue



Click **"Register"**



You will then be notified by email that an  
account has been created.



Once an account has been created you  
are all **"Set to Bid"**



Each Auction can then be viewed by  
clicking **"Live Auction"** logo on the Elite  
Livestock Auctions website.



Once you receive email notification that  
your account has been created please  
go to the sale you wish to bid at and  
click **"Request to Bid"**



The sale will then approve your appli-  
cation to bid and on the sale catalogue  
you will see **"✓ Bid Request Approved"**



On Sale day simply login, click "Enter  
Auction" on the catalogue page and you  
can start bidding.  
*(There is no need for software download)*



At the completion of the auction, invoic-  
ing will be carried out as per your regis-  
tration details by the Selling Agents.

Having trouble registering and logging in?  
**Contact Elite Livestock Auctions**



**1300 259 742**

Elite Livestock Auctions ABN 19604 627 607  
Level 19, 123 Eagle Street, Brisbane, QLD 4000

P : 1300 259 742 F : 07 3041 5053  
[www.elitelivestockauctions.com.au](http://www.elitelivestockauctions.com.au)

# LET'S TALK ABOUT THE 2023 ANGUS AND SIMMENTAL BULL SALE DRAFT

## Climate/Conditions - What have they have been run in?

Both Angus and Simmental bulls have been running the majority of the time as one large contemporary group (only exception being to prevent injuries due to fighting, after all boys will be boys) since weaning on farm at Yerwal Estate, Lucindale, SA. This year we had Peter Barr educate the bulls with dogs post weaning. All bulls are familiar with utes, motor bikes and dogs.

Our property has deep sandy soils that make feet a big focus. We don't believe in hoof trimming our bulls and the soil won't hide poor feet. Regan's strict selection of our draft and females ensure our bulls/their progeny can last the distance. Any progeny in the herd that have poor feet (claw set or angle) are instantly culled regardless of the pedigree/data.

## Nutrition - what have they been eating?

For the first 12 months of the sale bulls life they are grazed on pastures in the paddock while on mum. Once weaned they go on a high roughage ration while still grazing in the paddock. Our pastures include; clovers and perennial grasses such as phalaris, ryegrass and clovers. Timing of introducing the high roughage feed ration is dependent on the season. We try to maintain an even growth weight gain without having to push them. This means their gut nutrition is not highly disturbed and when taken to their new home with minimal effects to gut health and have the ability to maintain their condition while transitioning into work. We take great care to ensure their mineral level and nutrition is balanced to ensure it is balanced ready for the joining season.

## DNA, Polled and Colour Testing

All Angus and Simmental Bulls have been DNA tested. This gives our clients more accurate data in terms of sire verification, coat colour assurance and horn status. We have included some information with further explanation of what these results indicate. In terms on sire verification we are guaranteeing bulls are sire verified for your breeding programs accuracy.

## Simmental Horn Status

Homozygous polled means the bull carries two polled genes. Heterozygous polled means the bull will only carry one polled gene and one horned gene.

Bull	Cow	Progeny
Homo Polled	Homo Polled	100% Polled
	Hetero Polled	100% Polled
	Horned	100% Polled
Hetero Polled	Homo Polled	100% Polled
	Hetero Polled	75% Polled, 25% Polled
	Horned	50% Polled, 50% Horned

## Simmental Coat Colour

Homozygous Black - the bull carries two copies of the black gene. Heterozygous Black the bull carries one black gene and one red gene. Red (assuming the bull is diluter free) the bull carries two red genes.

Bull	Cow	Progeny
Homo Black	Homo Black	100% Black
	Hetero Black	100% Black
	Red	100% Black
Hetero Black	Homo Black	100% Black
	Hetero Black	75% Black, 25% Red
	Red	50% Black, 50% Red
Red	Homo Black	100% Black
	Hetero Black	75% Black, 25% Red
	Red	100% Red

## What is the Fertility and Structural Guarantee?

Yerwal Estate guarantees the structural integrity and fertility of all of its sale bulls. The entry of every bull constitutes a guarantee by the us (Yerwal Estate) that the bull will be replaced or the purchase price\* refunded if a bull proves totally infertile within the first 12 months from the date of purchase. All bulls have been vet and semen checked (morphology results to be included in supplementary sheet).

\* Without interest, expenses, costs and damages.

## What is the Health Status of the bulls?

Yerwal Estate is Johnes Beef Assurance Score (J-BAS) accredited and has a score of J-BAS 6. All bulls were tested free of Pestivirus and have been vaccinated with Ultravac 7 in 1, tick blooded, Pestigard, Botulism and Vibrovax. We recommend annual boosters for 7 in 1, pestigard and Vibrovax.

## Scan Data

All sale bulls have been scanned by Mr Max Bowman who is an accredited scanner; Accreditation # 1026 on the 15/11/22. A supplementary sheet will be supplied at the sale and online via Elite Livestock including current weights and scrotal measurements.



# UNDERSTANDING THE TRANSTASMAN ANGUS CATTLE EVALUATION (TACE)



## What is the TransTasman Angus Cattle Evaluation?

The TransTasman Angus Cattle Evaluation is the genetic evaluation program adopted by Angus Australia for Angus and Angus influenced beef cattle. The TransTasman Angus Cattle Evaluation uses Best Linear Unbiased Prediction (BLUP) technology to produce Estimated Breeding Values (EBVs) of recorded cattle for a range of important production traits (e.g. weight, carcase, fertility).

The TransTasman Angus Cattle Evaluation is an international genetic evaluation and includes pedigree, performance and genomic information from the Angus Australia and Angus New Zealand databases, along with selected information from the American and Canadian Angus Associations.

The TransTasman Angus Cattle Evaluation utilises a range of genetic evaluation software, including the internationally recognised BLUPF90 family of programs, and BREEDPLAN® beef genetic evaluation analytical software, as developed by the Animal Genetics and Breeding Unit (AGBU), a joint institute of NSW Agriculture and the University of New England, and Meat and Livestock Australia Limited (MLA).

## What is an EBV?

An animal's breeding value can be defined as its genetic merit for each trait. While it is not possible to determine an animal's true breeding value, it is possible to estimate it. These estimates of an animal's true breeding value are called EBVs (Estimated Breeding Values).

EBVs are expressed as the difference between an individual animal's genetics and a historical genetic level (i.e. group of animals) within the TACE genetic evaluation, and are reported in the units in which the measurements are taken.

## Using EBVs to Compare the Genetics of Two Animals

TACE EBVs can be used to estimate the expected difference in the genetics of two animals, with the expected difference equating to half the difference in the EBVs of the animals, all other things being equal (e.g. they are joined to the same animal/s).

For example, a bull with a 200 Day Growth EBV of +60 would be expected to produce progeny that are, on average,

10 kg heavier at 200 days of age than a bull with a 200 Day Growth EBV of +40 kg (i.e. 20 kg difference between the sire's EBVs, then halved as the sire only contributes half the genetics).

Or similarly, a bull with an IMF EBV of +3.0 would be expected to produce progeny with on average, 1% more intramuscular fat in a 400 kg carcase than a bull with a IMF EBV of +1.0 (i.e. 2% difference between the sire's EBVs, then halved as the sire only contributes half the genetics).

## Using EBVs to Benchmark an Animal's Genetics with the Breed

EBVs can also be used to benchmark an

animal's genetics relative to the genetics of other Angus or Angus infused animals recorded with Angus Australia.

To benchmark an animal's genetics relative to other Angus animals, an animal's EBV can be compared to the EBV reference tables, which provide:

- the breed average EBV
- the percentile bands table

The current breed average EBV is listed on the bottom of each page in this publication, while the current EBV reference tables are included at the end of these introductory notes.

For easy reference, the percentile band in which an animal's EBV ranks is also published in association with the EBV.

## Considering Accuracy

An accuracy value is published with each EBV, and is usually displayed as a percentage value immediately below the EBV.

The accuracy value provides an indication of the reliability of the EBV in estimating the animal's genetics (or true breeding value), and is an indication of the amount of information that has been used in the calculation of the EBV.

EBVs with accuracy values below 50% should be considered as preliminary or of low accuracy, 50-74% as of medium accuracy, 75-90% of medium to high accuracy, and 90% or greater as high accuracy.

## Description of TACE EBVs

EBVs are calculated for a range of traits within TACE, covering calving ease, growth, fertility, maternal performance, carcase merit, feed efficiency and structural soundness. A description of each EBV included in this publication is provided on the following page.

# UNDERSTANDING ESTIMATED BREEDING VALUES (EBVS)

Calving Ease/Birth	<b>CEDir</b>	%	Genetic differences in the ability of a sire's calves to be born unassisted from 2 year old heifers.	Higher EBVs indicate fewer calving difficulties in 2 year old heifers.
	<b>CEDtrs</b>	%	Genetic differences in the ability of a sire's daughters to calve unassisted at 2 years of age.	Higher EBVs indicate fewer calving difficulties in 2 year old heifers.
	<b>GL</b>	days	Genetic differences between animals in the length of time from the date of conception to the birth of the calf.	Lower EBVs indicate shorter gestation length.
	<b>BW</b>	kg	Genetic differences between animals in calf weight at birth.	Lower EBVs indicate lighter birth weight.
Growth	<b>200 Day</b>	kg	Genetic differences between animals in live weight at 200 days of age due to genetics for growth.	Higher EBVs indicate heavier live weight.
	<b>400 Day</b>	kg	Genetic differences between animals in live weight at 400 days of age.	Higher EBVs indicate heavier live weight.
	<b>600 Day</b>	kg	Genetic differences between animals in live weight at 600 days of age.	Higher EBVs indicate heavier live weight.
	<b>MCW</b>	kg	Genetic differences between animals in live weight of cows at 5 years of age.	Higher EBVs indicate heavier mature weight.
	<b>Milk</b>	kg	Genetic differences between animals in live weight at 200 days of age due to the maternal contribution of its dam.	Higher EBVs indicate heavier live weight.
Fertility	<b>DtC</b>	days	Genetic differences between animals in the time from the start of the joining period (i.e. when the female is introduced to a bull) until subsequent calving.	Lower EBVs indicate shorter time to calving.
	<b>SS</b>	cm	Genetic differences between animals in scrotal circumference at 400 days of age.	Higher EBVs indicate larger scrotal circumference.
Carcase	<b>CWT</b>	kg	Genetic differences between animals in hot standard carcase weight at 750 days of age.	Higher EBVs indicate heavier carcase weight.
	<b>EMA</b>	cm <sup>2</sup>	Genetic differences between animals in eye muscle area at the 12/13th rib site in a 400 kg carcase.	Higher EBVs indicate larger eye muscle area.
	<b>Rib Fat</b>	mm	Genetic differences between animals in fat depth at the 12/13th rib site in a 400 kg carcase.	Higher EBVs indicate more fat.
	<b>P8 Fat</b>	mm	Genetic differences between animals in fat depth at the P8 rump site in a 400 kg carcase.	Higher EBVs indicate more fat.
	<b>RBY</b>	%	Genetic differences between animals in boned out saleable meat from a 400 kg carcase.	Higher EBVs indicate higher yield.
	<b>IMF</b>	%	Genetic differences between animals in intramuscular fat (marbling) at the 12/13th rib site in a 400 kg carcase.	Higher EBVs indicate more intramuscular fat.
Feed/Temp.	<b>NFI-F</b>	kg/day	Genetic differences between animals in feed intake at a standard weight and rate of weight gain when animals are in a feedlot finishing phase.	Lower EBVs indicate more feed efficiency.
	<b>Doc</b>	%	Genetic differences between animals in temperament.	Higher EBVs indicate better temperament.
Structure	<b>Claw Set</b>	score	Genetic differences in claw set structure (shape and evenness of claws).	Lower EBVs indicate a lower score.
	<b>Foot Angle</b>	score	Genetic differences in foot angle (strength of pastern, depth of heel).	Lower EBVs indicate a lower score.
	<b>Leg Angle</b>	score	Genetic differences in rear leg structure when viewed from the side (angle at front of the hock).	Lower EBVs indicate a lower score.
Selection Index	<b>\$A</b>	\$	Genetic differences between animals in net profitability per cow joined in a typical commercial self replacing herd using Angus bulls. This selection index is not specific to a particular market end-point, but identifies animals that will improve overall net profitability in the majority of commercial, self replacing, grass and grain finishing beef production systems.	Higher selection indexes indicate greater profitability.
	<b>\$A-L</b>	\$	<p>Genetic differences between animals in net profitability per cow joined in a typical commercial self replacing herd using Angus bulls. This selection index is not specific to a particular market end-point, but identifies animals that will improve overall net profitability in the majority of commercial, self replacing, grass and grain finishing beef production systems.</p> <p>The \$A-L index is similar to the \$A index but is modelled on a production system where feed is surplus to requirements for the majority of the year, or the cost of supplying additional feed when animal feed requirements increase is low.</p> <p>While the \$A aims to maintain mature cow weight, the \$A-L does not aim to limit the increase in mature cow weight as there is minimal cost incurred if the feed maintenance requirements of the female breeding herd increase as a result of selection decisions.</p>	Higher selection indexes indicate greater profitability.

# Lot 1

# Yerwal Estate Stanbroke S006 (PP) (B)

# AMOPS006



Date of Birth: 11/02/2021  
Horn: **Homo. Polled (by DNA Test)**  
Eye Pigment:  
Colour: **Homo. Black (by DNA Test)**

WELSH'S WARSAW 312Z (P) (B)  
HART STATE OF WAR 056C (P) (B)  
HART MISS 102A (P) (B)  
**Sire: YERWAL EST STATE OF WAR Q300 (PP) (ET) (AI) (B)**  
MR NLC SUPERIOR S6018 (P) (B)  
YERWAL EST CHARO J59 (P) (ET) (AI) (B)  
LFE CHARO 604G (P) (B)

LFE BOUNTY 3118Z  
WLB BOUNTY HUNTER 365C (P) (B)  
LFE BS MARY 26A  
**Dam: YERWAL EST TRISHA Q317 (P) (ET) (AI) (B)**  
PVF RED SUNSET 800H (P) (R)  
GOOMABURRA TRISHA Z211 (H) (AI) (R)  
GOOMABURRA VARINA V92 (H)

January 2023 Simmental Trans Tasman Breedplan									
	CE Dir	CE Dtrs	GL	BW	200	400	600	MCW	Milk
<b>EBV</b>	<b>+3.5</b>	<b>+4.2</b>	<b>-1.6</b>	<b>+0.1</b>	<b>+25</b>	<b>+42</b>	<b>+40</b>	<b>+34</b>	<b>+5</b>
Acc	30%	27%	40%	47%	41%	40%	38%	32%	32%
Av	+2.7	+1.7	-1.6	+0.6	+21	+37	+46	+47	+8
	SS	DC	CWT	EMA	Rib	Rump	RBV	IMF	Docility
<b>EBV</b>	<b>+0.8</b>	<b>-</b>	<b>+26</b>	<b>+2.5</b>	<b>+1.1</b>	<b>+0.4</b>	<b>-0.4</b>	<b>+0.1</b>	<b>-</b>
Acc	27%	-	33%	28%	29%	28%	25%	27%	-
Av	+0.5	-1.5	+25	+2.5	+0.5	+0.2	+0.5	+0.3	+9

Selection Index Values		
Market Target	Index Value	Breed Average
Domestic Maternal Index	-	-
Export Maternal Index	-	-
Northern Terminal Index	-	-
Vealer Terminal Index	-	-

Traits Analysed:

**Notes:** Here he is if you're looking for a Homozygous black and polled option Lot 1 has it all. Stanbroke is sired by Q300 who was sold to Elite Cattle Co in 2020 out of one of our outstanding young Trisha daughters. He has excellent feet, bone and muscle. From his data he is a safe calving ease and low birthweight with positive fats to add.

Purchaser ..... \$ .....

# Lot 2

# Yerwal Estate Statesman (PP) (B)

# AMOPS024



Date of Birth: 08/03/2021  
Horn: **Homo. Polled (by DNA Test)**  
Eye Pigment: 100/100  
Colour: **Hetero Black (by DNA Test)**

KOP CROSBY 137W (P)  
SPRINGCREEK LOTTO 52Y (P) (B)  
SPRINGCREEK BLK TESS 25T (P)  
**Sire: YERWAL EST LOTTO (Pp) (ET) (AI) (B)**  
PVF RED SUNSET 800H (P) (R)  
GOOMABURRA TRISHA Z211 (H) (AI) (R)  
GOOMABURRA VARINA V92 (H)

LFE GOTHAM 819Y  
LFE THE RIDDLER 323B (P) (B)  
LFE BS CHARO 23Y  
**Dam: YERWAL EST CHARO P252 (P) (ET) (AI) (B)**  
MR NLC SUPERIOR S6018 (P) (B)  
YERWAL EST CHARO J59 (P) (ET) (AI) (B)  
LFE CHARO 604G (P) (B)

December 2022 Simmental Trans Tasman Breedplan									
	CE Dir	CE Dtrs	GL	BW	200	400	600	MCW	Milk
<b>EBV</b>	<b>+1.4</b>	<b>+4.7</b>	<b>-2.2</b>	<b>+0.7</b>	<b>+25</b>	<b>+42</b>	<b>+44</b>	<b>+47</b>	<b>+6</b>
Acc	30%	29%	41%	59%	47%	45%	42%	36%	35%
Av	+2.7	+1.8	-1.6	+0.6	+20	+37	+46	+47	+8
	SS	DC	CWT	EMA	Rib	Rump	RBV	IMF	Docility
<b>EBV</b>	<b>+0.5</b>	<b>-</b>	<b>+27</b>	<b>+3.6</b>	<b>+0.6</b>	<b>-0.3</b>	<b>+0.3</b>	<b>0.0</b>	<b>-</b>
Acc	31%	-	35%	30%	31%	29%	27%	29%	-
Av	+0.5	-1.5	+25	+2.5	+0.5	+0.2	+0.4	+0.3	+9

Selection Index Values		
Market Target	Index Value	Breed Average
Domestic Maternal Index	+\$43	+\$40
Export Maternal Index	+\$47	+\$49
Northern Terminal Index	+\$26	+\$25
Vealer Terminal Index	+\$41	+\$34

Traits Analysed: BWT

**Notes:** Statesman is hetero black with above breed average Eye Muscle data. His maternal pedigree is the great Charo background his faultless out of Yerwal Estate Lotto, who constantly breeds thick and functional cattle. Statesman's maternal grandmother Charo J59 is one of our leading Black Simmental donors here at Yerwal Estate and she doesn't miss a beat. If your looking to breed self replacing females that last the distance then you can breed with trust knowing the proven genetic history behind Stateman's pedigree.

Purchaser ..... \$ .....



## Lot 3

## Yerwal Estate Smudge (PP) (B)

AMOPS029



Date of Birth: 24/03/2021  
 Horn: **Homo. Polled (by DNA Test)**  
 Eye Pigment: 100/100  
 Colour: **Homo. Black (by DNA Test)**

KOP CROSBY 137W (P)  
 SPRINGCREEK LOTTO 52Y (P) (B)  
 SPRINGCREEK BLK TESS 25T (P)  
**Sire: YERWAL EST LOTTO (Pp) (ET) (AI) (B)**  
 PVF RED SUNSET 800H (P) (R)  
 GOOMABURRA TRISHA Z211 (H) (AI) (R)  
 GOOMABURRA VARINA V92 (H)

LFE GOTHAM 819Y  
 LFE THE RIDDLER 323B (P) (B)  
 LFE BS CHARO 23Y  
**Dam: YERWAL EST CHARO P255 (P) (ET) (AI) (B)**  
 MR NLC SUPERIOR S6018 (P) (B)  
 YERWAL EST CHARO J59 (P) (ET) (AI) (B)  
 LFE CHARO 604G (P) (B)

December 2022 Simmental Trans Tasman Breedplan									
	CE Dir	CE Dtrs	GL	BW	200	400	600	MCW	Milk
<b>EBV</b>	<b>+3.2</b>	<b>+5.2</b>	<b>-2.5</b>	<b>+0.1</b>	<b>+23</b>	<b>+40</b>	<b>+41</b>	<b>+44</b>	<b>+6</b>
Acc	30%	29%	38%	41%	38%	38%	36%	32%	35%
Av	+2.7	+1.8	-1.6	+0.6	+20	+37	+46	+47	+8
	SS	DC	CWT	EMA	Rib	Rump	RBY	IMF	Docility
<b>EBV</b>	<b>+0.4</b>	<b>-</b>	<b>+26</b>	<b>+3.6</b>	<b>+0.6</b>	<b>-0.3</b>	<b>+0.3</b>	<b>0.0</b>	<b>-</b>
Acc	31%	-	34%	30%	31%	29%	27%	29%	-
Av	+0.5	-1.5	+25	+2.5	+0.5	+0.2	+0.4	+0.3	+9

Selection Index Values		
Market Target	Index Value	Breed Average
Domestic Maternal Index	+\$45	+\$40
Export Maternal Index	+\$50	+\$49
Northern Terminal Index	+\$26	+\$25
Vealer Terminal Index	+\$41	+\$34

Traits Analysed: BWT

**Notes:** Smudge is homozygous black and has above breed average Eye Muscle, good direct calving ease and low birthweight data. His maternal pedigree is the great Charo background his faultless out of Yerwal Estate Lotto, who consistently breeds thick and functional cattle. Smudge's maternal grandmother Charo J59 is one of our leading Black Simmental donors here at Yerwal Estate and she doesn't miss a beat. If your looking to breed self replacing females that last the distance then you can breed with trust knowing the proven genetic history behind Smudge's pedigree.

Purchaser ..... \$ .....

## Lot 4

## Yerwal Estate Shot Glass (PP) (B)

AMOPS022



Date of Birth: 05/03/2021  
 Horn: **Homo. Polled (by DNA Test)**  
 Eye Pigment: 100/100  
 Colour: **Hetero Black (by DNA Test)**

KOP CROSBY 137W (P)  
 SPRINGCREEK LOTTO 52Y (P) (B)  
 SPRINGCREEK BLK TESS 25T (P)  
**Sire: YERWAL EST LOTTO (Pp) (ET) (AI) (B)**  
 PVF RED SUNSET 800H (P) (R)  
 GOOMABURRA TRISHA Z211 (H) (AI) (R)  
 GOOMABURRA VARINA V92 (H)

GLEN ANTHONY Y-ARTA AY02 (P) (ET)  
 WOONALLEE LOS ANGELES (P) (ET) (AI)  
 WOONALLEE KATHIE B111 (H) (ET) (AI)  
**Dam: YERWAL EST Q303 (P) (ET) (AI)**  
 MR NLC SUPERIOR S6018 (P) (B)  
 YERWAL EST CHARO J59 (P) (ET) (AI) (B)  
 LFE CHARO 604G (P) (B)

December 2022 Simmental Trans Tasman Breedplan									
	CE Dir	CE Dtrs	GL	BW	200	400	600	MCW	Milk
<b>EBV</b>	<b>+5.0</b>	<b>+4.2</b>	<b>-3.1</b>	<b>-0.4</b>	<b>+18</b>	<b>+32</b>	<b>+40</b>	<b>+39</b>	<b>+10</b>
Acc	29%	27%	39%	60%	48%	45%	42%	35%	32
Av	+2.7	+1.8	-1.6	+0.6	+20	+37	+46	+47	+8
	SS	DC	CWT	EMA	Rib	Rump	RBY	IMF	Docility
<b>EBV</b>	<b>+0.1</b>	<b>-</b>	<b>+23</b>	<b>+2.8</b>	<b>+0.4</b>	<b>-0.1</b>	<b>+0.6</b>	<b>-0.3</b>	<b>-</b>
Acc	29%	-	33%	27%	29%	27%	25%	27%	-
Av	+0.5	-1.5	+25	+2.5	+0.5	+0.2	+0.4	+0.3	+9

Selection Index Values		
Market Target	Index Value	Breed Average
Domestic Maternal Index	+\$44	+\$40
Export Maternal Index	+\$52	+\$49
Northern Terminal Index	+\$27	+\$25
Vealer Terminal Index	+\$39	+\$34

Traits Analysed: BWT

**Notes:** Shot Glass is hetero black and weighed a mere 30kg at birth so he should have fantastic calving ease which is also reflected in his data. His +5.0 for direct calving ease and -0.4 birth weight make him a good sleep easy calving option. His maternal pedigree is the great Charo background his faultless out of Yerwal Estate Lotto, who consistently breeds thick and functional cattle. Shot Glass's maternal grandmother Charo J59 is one of our leading Black Simmental donors here at Yerwal Estate and she doesn't miss a beat. If your looking to breed self replacing females that last the distance then you can breed with trust knowing the proven genetic history behind Shot Glass's pedigree.

Purchaser ..... \$ .....

Lot 5

Yerwal Estate Stockholm (PP) (R)

AMOPS003



Date of Birth: 05/02/2021  
Horn: **Homo. Polled (by DNA Test)**  
Eye Pigment: 100/100  
Colour: **Homo. Red (by DNA Test)**

KOP CROSBY 137W (P)  
SPRINGCREEK LOTTO 52Y (P) (B)  
SPRINGCREEK BLK TESS 25T (P)  
**Sire: YERWAL EST LOTTO (Pp) (ET) (AI) (B)**  
PVF RED SUNSET 800H (P) (R)  
GOOMABURRA TRISHA Z211 (H) (AI) (R)  
GOOMABURRA VARINA V92 (H)

LFE GOTHAM 819Y  
LFE THE RIDDLER 323B (P) (B)  
LFE BS CHARO 23Y  
**Dam: YERWAL EST CHARO P252 (P) (ET) (AI) (B)**  
MR NLC SUPERIOR S6018 (P) (B)  
YERWAL EST CHARO J59 (P) (ET) (AI) (B)  
LFE CHARO 604G (P) (B)

December 2022 Simmental Trans Tasman Breedplan									
	CE Dir	CE Dtrs	GL	BW	200	400	600	MCW	Milk
<b>EBV</b>	<b>+3.7</b>	<b>+5.4</b>	<b>-2.6</b>	<b>0.0</b>	<b>+22</b>	<b>+39</b>	<b>+40</b>	<b>+43</b>	<b>+6</b>
Acc	30%	29%	41%	59%	47%	45%	42%	36%	35%
Av	+2.7	+1.8	-1.6	+0.6	+20	+37	+46	+47	+8
	SS	DC	CWT	EMA	Rib	Rump	RBY	IMF	Docility
<b>EBV</b>	<b>+0.4</b>	<b>-</b>	<b>+26</b>	<b>+3.6</b>	<b>+0.6</b>	<b>-0.3</b>	<b>+0.3</b>	<b>0.0</b>	<b>-</b>
Acc	31%	-	35%	30%	31%	29%	27%	29%	-
Av	+0.5	-1.5	+25	+2.5	+0.5	+0.2	+0.4	+0.3	+9

Selection Index Values		
Market Target	Index Value	Breed Average
Domestic Maternal Index	+\$45	+\$40
Export Maternal Index	+\$51	+\$49
Northern Terminal Index	+\$26	+\$25
Vealer Terminal Index	+\$41	+\$34

Traits Analysed: BWT

**Notes:** Stockholm is a straight Red Simmental that will add weight to those weaners. Added bonus he is homozygous polled. His maternal pedigree is the great Charo background his faultless out of Yerwal Estate Lotto, who consistently breeds thick and functional cattle. Stockholm's maternal grandmother Charo J59 is one of our leading Black Simmental donors here at Yerwal Estate and she doesn't miss a beat. If your looking to breed self replacing females that last the distance then you can breed with trust knowing the proven genetic history behind Stockholm's pedigree.

Purchaser ..... \$ .....

Lot 6

Yerwal Estate Spunky (Pp) (ET) (AI)

AMOPS305



Date of Birth: 12/04/2021  
Horn: **Hetero Polled (by DNA Test)**  
Eye Pigment: 100/100  
Colour: **Homo. Red (by DNA Test)**

GLEN ANTHONY SGT. PEPPER AC27 (AI)  
WAI-ITI HIGH RISER  
WAI-ITI PAULA 5  
**Sire: GLEN ANTHONY Y-ARTA AY02 (P) (ET)**  
TOKAWEKA HANDSOME AH801  
WILLOWBROOK URSULINA AU18  
WILLOWBROOK FERGIE

BLINKBOU MODIST  
WOONALLEE BHR TORNADO (P) (ET) (AI)  
WISP-WILL ROSY  
**Dam: MT MOONEY LACEY PRINCESS (Pp) (ET) (AI)**  
WOONALLEE HADAU (H) (ET) (AI)  
YERWAL EST FUTURE PRINCESS (H) (ET) (AI)  
YERWAL EST DONATELLA

January 2023 Simmental Trans Tasman Breedplan									
	CE Dir	CE Dtrs	GL	BW	200	400	600	MCW	Milk
<b>EBV</b>	<b>+8.5</b>	<b>+3.9</b>	<b>-2.7</b>	<b>0.0</b>	<b>+18</b>	<b>+30</b>	<b>+41</b>	<b>+38</b>	<b>+16</b>
Acc	54%	52%	57%	69%	61%	60%	59%	55%	54%
Av	+2.7	+1.7	-1.6	+0.6	+21	+37	+46	+47	+8
	SS	DC	CWT	EMA	Rib	Rump	RBY	IMF	Docility
<b>EBV</b>	<b>-0.1</b>	<b>-2.4</b>	<b>+23</b>	<b>+1.3</b>	<b>+0.6</b>	<b>+1.3</b>	<b>+0.7</b>	<b>-0.4</b>	<b>-</b>
Acc	54%	35%	52%	48%	51%	50%	49%	47%	-
Av	+0.5	-1.5	+25	+2.5	+0.5	+0.2	+0.5	+0.3	+9

Selection Index Values		
Market Target	Index Value	Breed Average
Domestic Maternal Index	-	-
Export Maternal Index	-	-
Northern Terminal Index	-	-
Vealer Terminal Index	-	-

Traits Analysed: BWT

**Notes:** S305 is one of 6 outstanding ET flush brothers with positive fats, good muscle, extremely docile and polled. We have selected this bull for our on farm sale due to his exceptional carcass and type. Cosmetically he has a slight swelling on his jaw due to an old grass seed abscess. He comes with a 100% guarantee. Fully checked out by vet and comes with supporting documentation.

Purchaser ..... \$ .....



**Lot 7****Mt Mooney Parker W Simpson (Pp)****ZOMPS029**

Date of Birth: **28/06/2021**  
 Horn: **Hetero Polled (by DNA Test)**  
 Eye Pigment: **100/100**  
 Colour: **Homo. Red (by DNA Test)**

GLEN ANTHONY Y-ARTA AY02 (P) (ET)  
 WOONALLEE LOS ANGELES (P) (ET) (AI)  
 WOONALLEE KATHIE B111 (H) (ET) (AI)  
**Sire: YERWAL EST POWER PLAY (Pp) (ET)**  
 CHAMPS BRAVO (P)  
 YERWAL EST KOMPLEAT (H) (AI)  
 YERWAL EST FUTURE PRINCESS H68 (H) (ET) (AI)

DAN-JACO BENZ 78  
 BAR 5 SA BENZ 415L (H)  
 WISP-WILL FIONA  
**Dam: MT MOONEY NISHA (H) (ET) (AI)**  
 GREAT GUNS KARL 17C  
 YERWAL EST TAYLOR (AI)  
 YERWAL EST Q596 (H)

December 2022 Simmental Trans Tasman Breedplan									
	CE Dir	CE Dtrs	GL	BW	200	400	600	MCW	Milk
<b>EBV</b>	<b>-1.6</b>	<b>-0.7</b>	<b>-2.1</b>	<b>+2.4</b>	<b>+22</b>	<b>+36</b>	<b>+50</b>	<b>+48</b>	<b>+11</b>
Acc	34%	35%	42%	61%	49%	46%	44%	38%	33%
Av	+2.7	+1.8	-1.6	+0.6	+20	+37	+46	+47	+8
	SS	DC	CWT	EMA	Rib	Rump	RBV	IMF	Docility
<b>EBV</b>	<b>+0.1</b>	<b>-</b>	<b>+23</b>	<b>+3.0</b>	<b>-0.5</b>	<b>-0.1</b>	<b>+1.7</b>	<b>-0.3</b>	<b>-</b>
Acc	30%	-	34%	27%	29%	28%	26%	26%	-
Av	+0.5	-1.5	+25	+2.5	+0.5	+0.2	+0.4	+0.3	+9

Selection Index Values		
Market Target	Index Value	Breed Average
Domestic Maternal Index	+\$37	+\$40
Export Maternal Index	+\$43	+\$49
Northern Terminal Index	+\$27	+\$25
Vealer Terminal Index	+\$37	+\$34

Traits Analysed: BWT

**Notes:** Being only a late June drop this calf is a tremendously long bull standing on very good structure with added bone and carcass. Parker is slick coated, has an excellent temperament and comes from a rock-solid female line that will be sure to breed on.

Purchaser ..... \$ .....

**Lot 8****Mt Mooney Surat (Pp) (TW)****ZOMPS018**

Date of Birth: **08/03/2021**  
 Horn: **Hetero Polled (by DNA Test)**  
 Eye Pigment: **100/100**  
 Colour: **Homo. Red (by DNA Test)**

GLEN ANTHONY Y-ARTA AY02 (P) (ET)  
 WOONALLEE LOS ANGELES (P) (ET) (AI)  
 WOONALLEE KATHIE B111 (H) (ET) (AI)  
**Sire: YERWAL EST POWER PLAY (Pp) (ET)**  
 CHAMPS BRAVO (P)  
 YERWAL EST KOMPLEAT (H) (AI)  
 YERWAL EST FUTURE PRINCESS H68 (H) (ET) (AI)

DAN-JACO BENZ 78  
 BAR 5 SA BENZ 415L (H)  
 WISP-WILL FIONA  
**Dam: MT MOONEY MERCEDES BENZ (H) (ET) (AI)**  
 GREAT GUNS KARL 17C  
 YERWAL EST TAYLOR (AI)  
 YERWAL EST Q596 (H)

January 2023 Simmental Trans Tasman Breedplan									
	CE Dir	CE Dtrs	GL	BW	200	400	600	MCW	Milk
<b>EBV</b>	<b>-1.7</b>	<b>-1.6</b>	<b>-2.0</b>	<b>+2.3</b>	<b>+22</b>	<b>+36</b>	<b>+49</b>	<b>+46</b>	<b>+11</b>
Acc	34%	35%	40%	48%	42%	40%	39%	35%	33%
Av	+2.7	+1.7	-1.6	+0.6	+21	+37	+46	+47	+8
	SS	DC	CWT	EMA	Rib	Rump	RBV	IMF	Docility
<b>EBV</b>	<b>+0.1</b>	<b>-</b>	<b>+23</b>	<b>+3.0</b>	<b>-0.5</b>	<b>-0.1</b>	<b>+1.7</b>	<b>-0.3</b>	<b>-</b>
Acc	30%	-	33%	27%	29%	28%	26%	26%	-
Av	+0.5	-1.5	+25	+2.5	+0.5	+0.2	+0.5	+0.3	+9

Selection Index Values		
Market Target	Index Value	Breed Average
Domestic Maternal Index	+\$36	+\$40
Export Maternal Index	+\$40	+\$49
Northern Terminal Index	+\$27	+\$25
Vealer Terminal Index	+\$37	+\$35

Traits Analysed: BWT

**Notes:** Thickness and power in a dark red, polled package. This guy clearly didn't get held back as twin. As well as style he has plenty of power and depth with a lovely slick coat. He will stamp his progeny with that extra thump.

Purchaser ..... \$ .....



Lot 9

Mt Mooney Slammin Sam (Pp)

ZOMPS017



Date of Birth: 13/03/2021  
Horn: **Hetero Polled (by DNA Test)**  
Eye Pigment: 100/100  
Colour: **Homo. Red (by DNA Test)**

GLEN ANTHONY Y-ARTA AY02 (P) (ET)  
WOONALLEE LOS ANGELES (P) (ET) (AI)  
WOONALLEE KATHIE B111 (H) (ET) (AI)  
**Sire: YERWAL EST POWER PLAY (Pp) (ET)**  
CHAMPS BRAVO (P)  
YERWAL EST KOMPLEAT (H) (AI)  
YERWAL EST FUTURE PRINCESS H68 (H) (ET) (AI)

SIBELLE DIRTY HARRY 25Z (H)  
PHS BANK ROLL 345B (P)  
PHS YUMA  
**Dam: MT MOONEY PAULA (P) (AI)**  
WOONALLEE GLADIATOR (H) (ET) (AI)  
MT MOONEY MYSTERY8 (H) (ET) (AI)  
YERWAL EST CASSIE (H) (ET) (AI)

January 2023 Simmental Trans Tasman Breedplan									
	CE Dir	CE Dtrs	GL	BW	200	400	600	MCW	Milk
<b>EBV</b>	<b>+1.2</b>	<b>+0.5</b>	<b>-0.7</b>	<b>+1.4</b>	<b>+20</b>	<b>+30</b>	<b>+41</b>	<b>+31</b>	<b>+10</b>
Acc	35%	32%	45%	61%	49%	46%	44%	38%	32%
Av	+2.7	+1.7	-1.6	+0.6	+21	+37	+46	+47	+8
	SS	DC	CWT	EMA	Rib	Rump	RBV	IMF	Docility
<b>EBV</b>	<b>+0.1</b>	<b>-</b>	<b>+21</b>	<b>+3.0</b>	<b>-0.6</b>	<b>-0.5</b>	<b>+2.0</b>	<b>-0.3</b>	<b>-</b>
Acc	35%	-	34%	29%	31%	30%	29%	28%	-
Av	+0.5	-1.5	+25	+2.5	+0.5	+0.2	+0.5	+0.3	+9

Selection Index Values		
Market Target	Index Value	Breed Average
Domestic Maternal Index	+\$37	+\$40
Export Maternal Index	+\$43	+\$49
Northern Terminal Index	+\$25	+\$25
Vealer Terminal Index	+\$40	+\$35

Traits Analysed: CE, BWT

**Notes:** A moderate framed traditional Simmental bull. Born easily and early maturing. Plenty of thickness down the spine, slick coat, depth of flank, he will give you the extra kilos in those weaners!

Purchaser ..... \$ .....

Lot 10

Mt Mooney Sugar Ray S032 (P) (B)

ZOMDS032



Date of Birth: 01/09/2021  
Horn: **Polled**  
Eye Pigment: 100/100  
Colour: **Black**

MATAURI RESOLUTION F030 #  
STERITA PARK L195 <sup>SV</sup>  
STERITA PARK H182 #  
**Sire: YERWAL COMPLEMENT P65 (P)**  
WERNER WAR PARTY 2417 #  
YERWAL LADY L131 #  
LAGRAND LADY 5408 #

LFE BOUNTY 3118Z  
WLB BOUNTY HUNTER 365C (P) (B)  
LFE BS MARY 26A  
**Dam: MT MOONEY QUEEN NANDI (P) (AI) (B)**  
SVS CAPTAIN MORGAN 11Z (PP) (B)  
MT MOONEY NANNA (PP) (ET) (AI) (B)  
YERWAL EST KATARINA (P) (ET) (AI) (B)

January 2023 Simmental Trans Tasman Breedplan									
	CE Dir	CE Dtrs	GL	BW	200	400	600	MCW	Milk
<b>EBV</b>	<b>-</b>	<b>-</b>	<b>-5.5</b>	<b>-2.9</b>	<b>+11</b>	<b>+24</b>	<b>+29</b>	<b>+34</b>	<b>-</b>
Acc	-	-	29%	48%	36%	34%	31%	27%	-
Av	+2.7	+1.7	-1.6	+0.6	+21	+37	+46	+47	+8
	SS	DC	CWT	EMA	Rib	Rump	RBV	IMF	Docility
<b>EBV</b>	<b>-</b>	<b>-</b>	<b>-</b>	<b>-</b>	<b>-</b>	<b>-</b>	<b>-</b>	<b>-</b>	<b>-</b>
Acc	-	-	-	-	-	-	-	-	-
Av	+0.5	-1.5	+25	+2.5	+0.5	+0.2	+0.5	+0.3	+9

Selection Index Values		
Market Target	Index Value	Breed Average
Domestic Maternal Index	+\$46	+\$40
Export Maternal Index	+\$69	+\$49
Northern Terminal Index	+\$28	+\$25
Vealer Terminal Index	+\$27	+\$35

Traits Analysed: BWT

**Notes:** The youngest calf of our draft, Sugar Ray is a cracking SimAngus calf. He is from a very classy black Simmental female (ZOMPQ029). Easy calving, slick coated, the bone of a simmy with plenty of depth and capacity, yet still maintaining a soft as butter eye appeal. This bull has some serious grunt and will add that extra thump into your calves.

Purchaser ..... \$ .....

**Lot 11**

**Yerwal Estate Sailor Jerry S068 (Unregistered)**

**S068**



Date of Birth: **18/04/2021**

Horn:

Eye Pigment:

Colour:

KOP CROSBY 137W (P)

SPRINGCREEK LOTTO 52Y (P) (B)

SPRINGCREEK BLK TESS 25T (P)

**Sire: YERWAL EST LOTTO (Pp) (ET) (AI) (B)**

PVF RED SUNSET 800H (P) (R)

GOOMABURRA TRISHA Z211 (H) (AI) (R)

GOOMABURRA VARINA V92 (H)

**DAM: YERWAL EST PUREBRED ANGUS COW**

December 2022 Simmental Trans Tasman Breedplan									
	CE Dir	CE Dtrs	GL	BW	200	400	600	MCW	Milk
<b>EBV</b>	-	-	-	-	-	-	-	-	-
Acc	-	-	-	-	-	-	-	-	-
Av	-	-	-	-	-	-	-	-	-
	SS	DC	CWT	EMA	Rib	Rump	RBV	IMF	Docility
<b>EBV</b>	-	-	-	-	-	-	-	-	-
Acc	-	-	-	-	-	-	-	-	-
Av	-	-	-	-	-	-	-	-	-

Selection Index Values		
Market Target	Index Value	Breed Average
Domestic Maternal Index	-	-
Export Maternal Index	-	-
Northern Terminal Index	-	-
Vealer Terminal Index	-	-

**Traits Analysed:**

**Notes:** S068 leads our Yerwal SimAngus draft of bulls for 2023. This bull is an outstanding representation of an SimAngus bull bringing together the best attributes of both breeds. He is well muscled, very sound, easy doing and has a great temperament.

Purchaser ..... \$ .....

**Lot 12**

**Yerwal Estate Sip 'n' Save S072 (Unregistered)**

**S072**



Date of Birth: **07/05/2021**

Horn:

Eye Pigment:

Colour:

KOP CROSBY 137W (P)

SPRINGCREEK LOTTO 52Y (P) (B)

SPRINGCREEK BLK TESS 25T (P)

**Sire: YERWAL EST LOTTO (Pp) (ET) (AI) (B)**

PVF RED SUNSET 800H (P) (R)

GOOMABURRA TRISHA Z211 (H) (AI) (R)

GOOMABURRA VARINA V92 (H)

**DAM: YERWAL EST PUREBRED ANGUS COW**

December 2022 Simmental Trans Tasman Breedplan									
	CE Dir	CE Dtrs	GL	BW	200	400	600	MCW	Milk
<b>EBV</b>	-	-	-	-	-	-	-	-	-
Acc	-	-	-	-	-	-	-	-	-
Av	-	-	-	-	-	-	-	-	-
	SS	DC	CWT	EMA	Rib	Rump	RBV	IMF	Docility
<b>EBV</b>	-	-	-	-	-	-	-	-	-
Acc	-	-	-	-	-	-	-	-	-
Av	-	-	-	-	-	-	-	-	-

Selection Index Values		
Market Target	Index Value	Breed Average
Domestic Maternal Index	-	-
Export Maternal Index	-	-
Northern Terminal Index	-	-
Vealer Terminal Index	-	-

**Traits Analysed:**

**Notes:** S072 is a large frame and athletic SimAngus bull that will add plenty of weight and bone to his weaners, he is phenotypically well made for calving ease.

Purchaser ..... \$ .....



# Lot 13

# Yerwal Estate Super Man S210 (Unregistered)

# S210



Date of Birth: 15/07/2021

Horn:

Eye Pigment:

Colour:

KOP CROSBY 137W (P)

SPRINGCREEK LOTTO 52Y (P) (B)

SPRINGCREEK BLK TESS 25T (P)

**Sire: YERWAL EST LOTTO (Pp) (ET) (AI) (B)**

PVF RED SUNSET 800H (P) (R)

GOOMABURRA TRISHA Z211 (H) (AI) (R)

GOOMABURRA VARINA V92 (H)

**DAM: YERWAL EST PUREBRED ANGUS COW**

December 2022 Simmental Trans Tasman Breedplan									
	CE Dir	CE Dtrs	GL	BW	200	400	600	MCW	Milk
<b>EBV</b>	-	-	-	-	-	-	-	-	-
Acc	-	-	-	-	-	-	-	-	-
Av	-	-	-	-	-	-	-	-	-
	SS	DC	CWT	EMA	Rib	Rump	RBV	IMF	Docility
<b>EBV</b>	-	-	-	-	-	-	-	-	-
Acc	-	-	-	-	-	-	-	-	-
Av	-	-	-	-	-	-	-	-	-

Selection Index Values		
Market Target	Index Value	Breed Average
Domestic Maternal Index	-	-
Export Maternal Index	-	-
Northern Terminal Index	-	-
Vealer Terminal Index	-	-

Traits Analysed:

**Notes:** S210 in our eyes is a standout in the draft. He is very soft, structurally sound and full of red meat, he is sure to add a premium on the sale day of his progeny. If your looking for a game changer and something to add the kg and slick coat to your herd Super Man has it all.

Purchaser ..... \$ .....

# Lot 14

# Yerwal Estate Santiago S206 (Unregistered)

# S206



Date of Birth: 05/07/2021

Horn:

Eye Pigment:

Colour:

KOP CROSBY 137W (P)

SPRINGCREEK LOTTO 52Y (P) (B)

SPRINGCREEK BLK TESS 25T (P)

**Sire: YERWAL EST LOTTO (Pp) (ET) (AI) (B)**

PVF RED SUNSET 800H (P) (R)

GOOMABURRA TRISHA Z211 (H) (AI) (R)

GOOMABURRA VARINA V92 (H)

**DAM: YERWAL EST PUREBRED ANGUS COW**

December 2022 Simmental Trans Tasman Breedplan									
	CE Dir	CE Dtrs	GL	BW	200	400	600	MCW	Milk
<b>EBV</b>	-	-	-	-	-	-	-	-	-
Acc	-	-	-	-	-	-	-	-	-
Av	-	-	-	-	-	-	-	-	-
	SS	DC	CWT	EMA	Rib	Rump	RBV	IMF	Docility
<b>EBV</b>	-	-	-	-	-	-	-	-	-
Acc	-	-	-	-	-	-	-	-	-
Av	-	-	-	-	-	-	-	-	-

Selection Index Values		
Market Target	Index Value	Breed Average
Domestic Maternal Index	-	-
Export Maternal Index	-	-
Northern Terminal Index	-	-
Vealer Terminal Index	-	-

Traits Analysed:

**Notes:** S206 is very sound, good footed with great muscling. Bred similar to lots 11-18.

Purchaser ..... \$ .....

**Lot 15 Yerwal Estate Sullivan S195 (Unregistered)****S195**Date of Birth: **03/07/2021**

Horn:

Eye Pigment:

Colour:

KOP CROSBY 137W (P)

SPRINGCREEK LOTTO 52Y (P) (B)

SPRINGCREEK BLK TESS 25T (P)

**Sire: YERWAL EST LOTTO (Pp) (ET) (AI) (B)**

PVF RED SUNSET 800H (P) (R)

GOOMABURRA TRISHA Z211 (H) (AI) (R)

GOOMABURRA VARINA V92 (H)

**DAM: YERWAL EST PUREBRED ANGUS COW**

December 2022 Simmental Trans Tasman Breedplan									
	CE Dir	CE Dtrs	GL	BW	200	400	600	MCW	Milk
<b>EBV</b>	-	-	-	-	-	-	-	-	-
Acc	-	-	-	-	-	-	-	-	-
Av	-	-	-	-	-	-	-	-	-
	SS	DC	CWT	EMA	Rib	Rump	RBV	IMF	Docility
<b>EBV</b>	-	-	-	-	-	-	-	-	-
Acc	-	-	-	-	-	-	-	-	-
Av	-	-	-	-	-	-	-	-	-

Selection Index Values		
Market Target	Index Value	Breed Average
Domestic Maternal Index	-	-
Export Maternal Index	-	-
Northern Terminal Index	-	-
Vealer Terminal Index	-	-

Traits Analysed:

**Notes:** S195 is actually out of one of our Angus donors K110 therefore he comes with exceptional breeding on both sides and has the physical appearance to back that up. Breed with assurance that the strong maternal lines behind this bull will give you the top shelf replacement females you're looking for to last the distance.

Purchaser ..... \$ .....

**Lot 16 Yerwal Estate Solitaire S260 (Unregistered)****S260**Date of Birth: **08/09/2021**

Horn:

Eye Pigment:

Colour:

KOP CROSBY 137W (P)

SPRINGCREEK LOTTO 52Y (P) (B)

SPRINGCREEK BLK TESS 25T (P)

**Sire: YERWAL EST LOTTO (Pp) (ET) (AI) (B)**

PVF RED SUNSET 800H (P) (R)

GOOMABURRA TRISHA Z211 (H) (AI) (R)

GOOMABURRA VARINA V92 (H)

**DAM: YERWAL EST PUREBRED ANGUS COW**

December 2022 Simmental Trans Tasman Breedplan									
	CE Dir	CE Dtrs	GL	BW	200	400	600	MCW	Milk
<b>EBV</b>	-	-	-	-	-	-	-	-	-
Acc	-	-	-	-	-	-	-	-	-
Av	-	-	-	-	-	-	-	-	-
	SS	DC	CWT	EMA	Rib	Rump	RBV	IMF	Docility
<b>EBV</b>	-	-	-	-	-	-	-	-	-
Acc	-	-	-	-	-	-	-	-	-
Av	-	-	-	-	-	-	-	-	-

Selection Index Values		
Market Target	Index Value	Breed Average
Domestic Maternal Index	-	-
Export Maternal Index	-	-
Northern Terminal Index	-	-
Vealer Terminal Index	-	-

Traits Analysed:

**Notes:** S260 is another super thick SimAngus sire with all the carcass traits needed in the commercial beef industry.

Purchaser ..... \$ .....



# Lot 17

# Yerwal Estate Swift S265 (Unregistered)

S265



Date of Birth: 16/09/2021

Horn:

Eye Pigment:

Colour:

KOP CROSBY 137W (P)  
 SPRINGCREEK LOTTO 52Y (P) (B)  
 SPRINGCREEK BLK TESS 25T (P)  
**Sire: YERWAL EST LOTTO (Pp) (ET) (AI) (B)**  
 PVF RED SUNSET 800H (P) (R)  
 GOOMABURRA TRISHA Z211 (H) (AI) (R)  
 GOOMABURRA VARINA V92 (H)

**DAM: YERWAL EST PUREBRED ANGUS COW**

December 2022 Simmental Trans Tasman Breedplan									
	CE Dir	CE Dtrs	GL	BW	200	400	600	MCW	Milk
<b>EBV</b>	-	-	-	-	-	-	-	-	-
Acc	-	-	-	-	-	-	-	-	-
Av	-	-	-	-	-	-	-	-	-
	SS	DC	CWT	EMA	Rib	Rump	RBV	IMF	Docility
<b>EBV</b>	-	-	-	-	-	-	-	-	-
Acc	-	-	-	-	-	-	-	-	-
Av	-	-	-	-	-	-	-	-	-

Selection Index Values		
Market Target	Index Value	Breed Average
Domestic Maternal Index	-	-
Export Maternal Index	-	-
Northern Terminal Index	-	-
Vealer Terminal Index	-	-

Traits Analysed:

**Notes:** S265 has thrown a little more to the Angus side of his breeding giving you a little more softness but still has excellent capacity and exceptional feet.

Purchaser ..... \$ .....

# Lot 18

# Yerwal Estate Sub Woofer S205 (Unregistered)

S205



Date of Birth: 03/07/2021

Horn:

Eye Pigment:

Colour:

KOP CROSBY 137W (P)  
 SPRINGCREEK LOTTO 52Y (P) (B)  
 SPRINGCREEK BLK TESS 25T (P)  
**Sire: YERWAL EST LOTTO (Pp) (ET) (AI) (B)**  
 PVF RED SUNSET 800H (P) (R)  
 GOOMABURRA TRISHA Z211 (H) (AI) (R)  
 GOOMABURRA VARINA V92 (H)

**DAM: YERWAL EST PUREBRED ANGUS COW**

December 2022 Simmental Trans Tasman Breedplan									
	CE Dir	CE Dtrs	GL	BW	200	400	600	MCW	Milk
<b>EBV</b>	-	-	-	-	-	-	-	-	-
Acc	-	-	-	-	-	-	-	-	-
Av	-	-	-	-	-	-	-	-	-
	SS	DC	CWT	EMA	Rib	Rump	RBV	IMF	Docility
<b>EBV</b>	-	-	-	-	-	-	-	-	-
Acc	-	-	-	-	-	-	-	-	-
Av	-	-	-	-	-	-	-	-	-

Selection Index Values		
Market Target	Index Value	Breed Average
Domestic Maternal Index	-	-
Export Maternal Index	-	-
Northern Terminal Index	-	-
Vealer Terminal Index	-	-

Traits Analysed:

**Notes:** S205 is an earlier maturing SimAngus sire that will add plenty of muscle and shape to his progeny. Plenty of stretch, very mobile and one not to be overlooked.

Purchaser ..... \$ .....

**Lot 19****Limited Edition Simmental Australia Belt Buckle****No. 39**

Our 50th Anniversary Celebrations continue for Simmental Australia giving you the opportunity to secure a limited edition belt buckle from Troy Fischer Silverworks, Canada. This buckle is being put forward from the South Australian State Branch with Nutrien kindly supporting this lot on a no commission basis.

Postage Available Australia wide at Purchaser's expense and insurance.

All proceeds to go to the South Australian Simmental Branch. Belt Buckle #39.

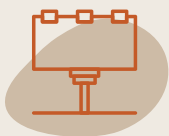
Purchaser ..... \$ .....

## Maximise your Stud Stock Sales with Australia's only dedicated Cattle Stud Marketing Agency

Stud Stock Marketing Services has the end-to-end means to market and promote your stud breeding operation, physical sales, genetic sales, online sales, paddock sales and even Breed Association.

Our team can assist to identify who your primary market is, identify the best ways to market and promote your operation to them and then perform some or all of the necessary marketing/promotion efforts at your request.

Create marketing campaigns, industry leading websites, targeted social media, fit-for-purpose video and TV commercials, high quality print (catalogues/flyers/ newspaper articles) and then there's design and production of banners, shed cards, branded merchandise and more.



### MARKETING STRATEGY, PLANS AND CAMPAIGNS

Develop a marketing campaign that includes how, when and where to market and promote. Identify how return on investment (ROI) is measured so that you only spend money where its needed.



### BRANDING AND GRAPHIC DESIGN

Align your brand with your desired market segment. Make your brand reflect the quality and professionalism of your operation every time it's visible to a potential buyer.



### WEBSITE DESIGN, BUILD, HOST AND MAINTAIN

Create a website that markets and promotes your operation 24/7, 365 days a year. Create an industry leading website that improves your Google Ranking and creates more leads for your business.



### DIGITAL MARKETING AND FACEBOOK CAMPAIGNS

Have you ever received metrics on Facebook posts or campaigns you have paid for? Likely not, because they don't stack up and are overpriced. Our offering is affordable, and it works.



### VIDEO PRODUCTION AND EDITING

Video sells better than photos or print. Our team can develop videos on anything you require including bulls for sale, stud sales, TV ads and more. We have a three-tiered solution offering pricing for every budget.



### LAUNCH OR GROW YOUR STUD SALE

Let us launch, improve or manage your entire bull sale. Only selling out of the paddock or online? We have a solution to sell your animals out of the paddock for a better return, one that has been tested and will get you results.

## ELEVATE YOUR CATTLE STUD BRAND



07 3063 4564



[gday@studstockmarketing.com.au](mailto:gday@studstockmarketing.com.au)



[@studstockmarketingservices](https://www.facebook.com/studstockmarketingservices)







## Reference Sire

Yerwal Resolution P4 <sup>PV</sup>

## SEYP4

MATAURI REALITY 839 #  
MATAURI RESOLUTION F030 #  
MATAURI 08817 #



SITZ UPWARD 307R <sup>SV</sup>  
YERWAL JUGGERNAUT J23 <sup>SV</sup>  
VERMONT DREAM E117 <sup>PV</sup>

Date of Birth: 01/01/2018  
Registration Status: **HBR**  
Mating Type: **Natural**  
Genetic Status: **AMF, CAF, DDF, NHF**

Sire: **SPLL195 STERITA PARK L195 <sup>SV</sup>**Dam: **SEYL159 YERWAL L159 <sup>SV</sup>**

COONAMBLE Z3 <sup>PV</sup>  
STERITA PARK H182 #  
STERITA PARK Z4 <sup>PV</sup>

STONEY POINT EQUATOR Y28 <sup>PV</sup>  
YERWAL CHIPPENDALE C41 #  
YERWAL WHISPER W1 #

January 2023 TransTasman Angus Cattle Evaluation											
TACE 	CE Dir	CE Dtrs	GL	BW	200	400	600	MCW	Milk	SS	DC
<b>EBV</b>	<b>+3.0</b>	<b>+4.0</b>	<b>-6.5</b>	<b>+5.1</b>	<b>+55</b>	<b>+107</b>	<b>+146</b>	<b>+138</b>	<b>+15</b>	<b>+2.1</b>	<b>-3.8</b>
Acc	57%	43%	67%	80%	77%	77%	83%	75%	56%	83%	39%
Perc	49	40	23	73	27	11	6	6	70	49	74
TACE 	CWT	EMA	Rib	Rump	RBV	IMF	NFI-F	Doc	Claw	Angle	Leg
<b>EBV</b>	<b>+80</b>	<b>+7.7</b>	<b>-2.4</b>	<b>-1.8</b>	<b>+1.7</b>	<b>-0.9</b>	<b>-0.26</b>	<b>+18</b>	<b>+0.86</b>	<b>+0.96</b>	<b>+1.18</b>
Acc	68%	65%	67%	68%	62%	68%	50%	29%	60%	60%	56%
Perc	13	32	93	76	2	99	7	62	52	45	88

Selection Indexes	
\$A	\$A-L
<b>\$191</b>	<b>\$365</b>
62	35

**Traits Observed:** BWT, 600WT, SC, Scan (EMA, Rib, Rump, IMF), Genomics

**Statistics:** Number of Herds: 1, Prog Analysed: 24, Genomic Prog: 7

## Reference Sire

Yerwal Wisdom P264 <sup>SV</sup>

## SEYP264

CONNEALY LEAD ON #  
CONNEALY ONWARD #  
ALTUNE OF CONANGA 6104 #



PAPA POWER 096 #  
PAPA EQUATOR 2928 #  
PAPA ENVIOUS BLACKBIRD 8849 #

Date of Birth: 30/10/2018  
Registration Status: **HBR**  
Mating Type: **ET**  
Genetic Status: **AMF, CAF, DDF, NHF**

Sire: **USA15636992 SITZ WISDOM 481T #**Dam: **SGMX65 STONEY POINT YANKEE QUEEN X65 #**

SITZ NEW DESIGN 349M #  
SITZ ELLUNA ELITE 94P #  
SITZ ELLUNA ELITE 163M #

RITO 054 G D A R #  
EASTFORK QUEEN 834 #  
SHOSHONE QUEEN 291 #

January 2023 TransTasman Angus Cattle Evaluation											
TACE 	CE Dir	CE Dtrs	GL	BW	200	400	600	MCW	Milk	SS	DC
<b>EBV</b>	<b>-0.8</b>	<b>+0.8</b>	<b>-2.7</b>	<b>+4.2</b>	<b>+56</b>	<b>+100</b>	<b>+127</b>	<b>+117</b>	<b>+16</b>	<b>+2.6</b>	<b>-4.3</b>
Acc	62%	51%	74%	78%	80%	79%	84%	78%	70%	83%	45%
Perc	77	72	81	53	24	24	30	23	62	29	61
TACE 	CWT	EMA	Rib	Rump	RBV	IMF	NFI-F	Doc	Claw	Angle	Leg
<b>EBV</b>	<b>+72</b>	<b>+3.8</b>	<b>-0.9</b>	<b>-0.2</b>	<b>+0.3</b>	<b>+1.1</b>	<b>+0.17</b>	<b>+11</b>	<b>+0.72</b>	<b>+0.88</b>	<b>+1.04</b>
Acc	72%	70%	72%	71%	67%	72%	55%	51%	70%	70%	59%
Perc	32	80	69	47	60	78	49	90	23	26	52

Selection Indexes	
\$A	\$A-L
<b>\$183</b>	<b>\$331</b>
70	62

**Traits Observed:** BWT, Genomics

**Statistics:** Number of Herds: 1, Prog Analysed: 21, Genomic Prog: 20

## Attention Buyer

Animal details included in this catalogue, including but not limited to pedigree, DNA information, Estimated Breeding Values (EBVs) and Index values, are based on information provided by the breeder or owner of the animal. Whilst all reasonable care has been taken to ensure that the information provided in this catalogue was correct at the time of publication, Angus Australia will assume no responsibility for the accuracy or completeness of the information, nor for the outcome (including consequential loss) of any action taken based on this information.

Lot 1

Yerwal Resolution S111<sup>SV</sup>

SEY21S111



Date of Birth: **06/06/2021**  
 Registration Status: **HBR**  
 Mating Type: **Natural**  
 Genetic Status: **AMF, CAF, DDF, NHF**

MATAURI RESOLUTION F030 #  
 STERITA PARK L195<sup>SV</sup>  
 STERITA PARK H182 #  
**Sire: SEYP4 YERWAL RESOLUTION P4<sup>PV</sup>**  
 YERWAL JUGGERNAUT J23<sup>SV</sup>  
 YERWAL L159<sup>SV</sup>  
 YERWAL CHIPPENDALE C41 #  
 CONNEALY CAPITALIST 028 #  
 SPRYS-W SUPREME M505<sup>PV</sup>  
 COOLANA NIGHTINGALE G281 #  
**Dam: SEYQ58 YERWAL Q58 #**  
 VERMONT RIGHT TIME E149<sup>PV</sup>  
 YERWAL J105 #  
 YERWAL FABLE F83 #

January 2023 TransTasman Angus Cattle Evaluation											
TACE	CE Dir	CE Dtrs	GL	BW	200	400	600	MCW	Milk	SS	DC
<b>EBV</b>	<b>+5.8</b>	<b>+3.4</b>	<b>-6.5</b>	<b>+4.9</b>	<b>+55</b>	<b>+90</b>	<b>+121</b>	<b>+92</b>	<b>+12</b>	<b>+1.3</b>	<b>-3.4</b>
Acc	49%	37%	63%	68%	67%	64%	71%	63%	52%	71%	30%
Perc	24	47	23	69	28	53	43	66	89	80	83
TACE	CWT	EMA	Rib	Rump	RBV	IMF	NFI-F	Doc	Claw	Angle	Leg
<b>EBV</b>	<b>+66</b>	<b>+8.9</b>	<b>-1.3</b>	<b>-1.5</b>	<b>+1.6</b>	<b>+0.5</b>	<b>-0.31</b>	-	<b>+0.74</b>	<b>+0.86</b>	<b>+0.98</b>
Acc	55%	54%	56%	57%	49%	60%	45%	-	60%	60%	56%
Perc	52	20	78	72	3	90	5	-	26	22	32

Selection Indexes	
\$A	\$A-L
<b>\$220</b>	<b>\$358</b>
28	40

**Traits Observed:** BWT, 600WT, SC, Scan (EMA Rib, Rump, IMF), Genomics

**Notes:** S111 is a well made Resolution son that combines balance and growth data to open our sale for 2023. His additional higher calving ease make him a suitable sire to produce progeny that will hit a variety of market specs. He is in the Top 3% of the breed for Retail Beef Yield, has moderate birth weight with a great phenotype and pedigree to back him in for any operation.

Purchaser ..... \$ .....

Lot 2

Yerwal Resolution S117<sup>SV</sup>

SEY21S117



Date of Birth: **08/06/2021**  
 Registration Status: **HBR**  
 Mating Type: **Natural**  
 Genetic Status: **AMF, CAF, DDF, NHF**

MATAURI RESOLUTION F030 #  
 STERITA PARK L195<sup>SV</sup>  
 STERITA PARK H182 #  
**Sire: SEYP4 YERWAL RESOLUTION P4<sup>PV</sup>**  
 YERWAL JUGGERNAUT J23<sup>SV</sup>  
 YERWAL L159<sup>SV</sup>  
 YERWAL CHIPPENDALE C41 #  
 CONNEALY EARNAN 076E<sup>PV</sup>  
 RAVENSWOOD LAST TYCOON L03<sup>SV</sup>  
 STONEY POINT YANKEE QUEEN G39 #  
**Dam: SEYQ71 YERWAL Q71 #**  
 YERWAL KALGOOLRLIE K117<sup>PV</sup>  
 YERWAL M37 #  
 YERWAL K48 #

January 2023 TransTasman Angus Cattle Evaluation											
TACE	CE Dir	CE Dtrs	GL	BW	200	400	600	MCW	Milk	SS	DC
<b>EBV</b>	<b>+2.6</b>	<b>+3.0</b>	<b>-8.5</b>	<b>+5.4</b>	<b>+67</b>	<b>+116</b>	<b>+155</b>	<b>+144</b>	<b>+13</b>	<b>+3.0</b>	<b>-5.3</b>
Acc	48%	37%	64%	67%	67%	64%	71%	62%	52%	71%	30%
Perc	52	51	7	78	3	3	3	4	82	18	31
TACE	CWT	EMA	Rib	Rump	RBV	IMF	NFI-F	Doc	Claw	Angle	Leg
<b>EBV</b>	<b>+92</b>	<b>+9.3</b>	<b>-1.6</b>	<b>-0.1</b>	<b>+1.2</b>	<b>+0.6</b>	<b>+0.06</b>	-	<b>+0.78</b>	<b>+0.84</b>	<b>+1.00</b>
Acc	55%	54%	56%	56%	49%	59%	45%	-	57%	57%	53%
Perc	3	17	83	45	10	88	34	-	34	19	38

Selection Indexes	
\$A	\$A-L
<b>\$249</b>	<b>\$438</b>
7	2

**Traits Observed:** BWT, 600WT, SC, Scan (EMA, Rib, Rump, IMF), Genomics

**Notes:** S117 has been one of our standout sires of the draft from early on. He is visually very impressive with excellent muscle, very mobile and has great confirmation. S117 also has exceptional growth data being in the top 3% of the breed for 200, 400 and 600 day weight as well as carcase weights. He also maintains positive calving ease and a gestation length in the top 7%. All this equates to extra dollars if he is running in your herd.

Purchaser ..... \$ .....







Lot 5

Yerwal Niagara S114 <sup>SV</sup>

SEY21S114



Date of Birth: **08/06/2021**  
 Registration Status: **HBR**  
 Mating Type: **AI**  
 Genetic Status: **AMF, CAF, DDF, NHF**

SYDGEN C C & 7 #  
 HOOVER DAM #  
 ERICA OF ELLSTON C124 #  
**Sire: USA17287387 S S NIAGARA Z29 <sup>SV</sup>**  
 B/R NEW DAY 454 #  
 JET S S X144 #  
 JET S S T151 #

CONNEALY CAPITALIST 028 #  
 SPRYS-W SUPREME M505 <sup>PV</sup>  
 COOLANA NIGHTINGALE G281 #  
**Dam: SEYQ139 YERWAL Q139 #**  
 VERMONT RIGHT TIME E149 <sup>PV</sup>  
 YERWAL DANDLOO J114 #  
 TE MANIA DANDLOO U161 #

January 2023 TransTasman Angus Cattle Evaluation											
<b>TACE</b>	CE Dir	CE Dtrs	GL	BW	200	400	600	MCW	Milk	SS	DC
<b>EBV</b>	<b>+2.0</b>	<b>+4.2</b>	<b>+3.0</b>	<b>+3.5</b>	<b>+47</b>	<b>+89</b>	<b>+118</b>	<b>+97</b>	<b>+17</b>	<b>+0.8</b>	<b>-3.8</b>
Acc	55%	43%	69%	70%	71%	69%	73%	66%	60%	73%	35%
Perc	58	38	99	36	64	55	49	57	52	91	74
<b>TACE</b>	CWT	EMA	Rib	Rump	RBV	IMF	NFI-F	Doc	Claw	Angle	Leg
<b>EBV</b>	<b>+59</b>	<b>+9.2</b>	<b>-0.5</b>	<b>+0.4</b>	<b>+0.7</b>	<b>+1.8</b>	<b>-0.24</b>	<b>+25</b>	<b>+0.74</b>	<b>+0.82</b>	<b>+1.10</b>
Acc	60%	60%	61%	60%	55%	64%	48%	46%	67%	67%	60%
Perc	73	18	60	36	33	59	8	28	26	16	70

Selection Indexes	
\$A	\$A-L
<b>\$197</b>	<b>\$336</b>
55	59

**Traits Observed:** BWT, 600WT, SC, Scan (EMA, Rib, Rump, IMF), Genomics

**Notes:** A Niagara son that is a definite heifer sire prospect. S114 combines moderate birth with fantastic growth and excellent carcass data to boot. Combine this with his docility at +25 makes him a well balanced sire for any operation.

Purchaser ..... \$ .....

Lot 6

Yerwal Complement S118 <sup>SV</sup>

SEY21S118



Date of Birth: **08/06/2021**  
 Registration Status: **HBR**  
 Mating Type: **Natural**  
 Genetic Status: **AMF, CAF, DDF, NHF**

BASIN FRANCHISE P142 #  
 EF COMPLEMENT 8088 <sup>PV</sup>  
 EF EVERELDA ENTENSE 6117 #  
**Sire: SPL19 STERITA PARK L19 <sup>SV</sup>**  
 SYDGEN TRUST 6228 #  
 STERITA PARK FOREVER LADY H305 #  
 S A F FOREVER LADY 260 #

STONE POINT FEVER PITCH F93 <sup>PV</sup>  
 STONEY POINT KEG K188 #  
 VERMONT DREAM E283 #  
**Dam: SEYN115 YERWAL N115 #**  
 NAMPARA HAYMAKER H09 <sup>SV</sup>  
 YERWAL L51 #  
 YERWAL TAMATHA D106 #

January 2023 TransTasman Angus Cattle Evaluation											
<b>TACE</b>	CE Dir	CE Dtrs	GL	BW	200	400	600	MCW	Milk	SS	DC
<b>EBV</b>	<b>+5.8</b>	<b>+5.4</b>	<b>-3.9</b>	<b>+1.3</b>	<b>+30</b>	<b>+57</b>	<b>+80</b>	<b>+66</b>	<b>+17</b>	<b>+0.1</b>	<b>-4.4</b>
Acc	52%	43%	66%	66%	67%	64%	70%	62%	55%	70%	35%
Perc	24	25	65	6	99	99	98	94	56	98	58
<b>TACE</b>	CWT	EMA	Rib	Rump	RBV	IMF	NFI-F	Doc	Claw	Angle	Leg
<b>EBV</b>	<b>+41</b>	<b>+7.1</b>	<b>+0.7</b>	<b>+1.7</b>	<b>+0.8</b>	<b>+2.1</b>	<b>+0.38</b>	<b>+19</b>	<b>+0.50</b>	<b>+0.82</b>	<b>+0.92</b>
Acc	55%	54%	56%	56%	49%	59%	47%	33%	64%	64%	60%
Perc	98	38	31	16	27	50	75	55	3	16	16

Selection Indexes	
\$A	\$A-L
<b>\$162</b>	<b>\$277</b>
84	89

**Traits Observed:** BWT, 600WT, SC, Scan (EMA, Rib, Rump, IMF), Genomics

**Notes:** This is the one and only bull with the Complement pedigree in the draft. S118 is in the top 6% for Birth weight with good calving ease making him a perfect sleep easy heifer sire. He also combines a great carcass, positive fats with fantastic structural data.

Purchaser ..... \$ .....

## Lot 7

Yerwal Resolution S119 <sup>SV</sup>

SEY21S119



Date of Birth: 09/06/2021  
 Registration Status: HBR  
 Mating Type: Natural  
 Genetic Status: AMF, CAF, DDF, NHF

MATAURI RESOLUTION F030 #  
 STERITA PARK L195 <sup>SV</sup>  
 STERITA PARK H182 #  
**Sire: SEYP4 YERWAL RESOLUTION P4 <sup>PV</sup>**  
 YERWAL JUGGERNAUT J23 <sup>SV</sup>  
 YERWAL L159 <sup>SV</sup>  
 YERWAL CHIPPENDALE C41 #

CONNEALY CAPITALIST 028 #  
 SPRYS-W SUPREME M505 <sup>PV</sup>  
 COOLANA NIGHTINGALE G281 #  
**Dam: SEYQ132 YERWAL Q132 #**  
 EXAR UPSHOT 0562B #  
 YERWAL DREAM J18 #  
 VERMONT DREAM E117 <sup>PV</sup>

January 2023 TransTasman Angus Cattle Evaluation											
TACE	CE Dir	CE Dtrs	GL	BW	200	400	600	MCW	Milk	SS	DC
EBV	+5.7	+7.0	-4.9	+3.5	+53	+98	+130	+121	+11	+2.6	-3.5
Acc	51%	39%	64%	67%	67%	65%	71%	63%	52%	72%	31%
Perc	25	12	47	36	36	28	24	19	91	29	81
TACE	CWT	EMA	Rib	Rump	RBV	IMF	NFI-F	Doc	Claw	Angle	Leg
EBV	+69	+2.8	-2.0	-1.6	+0.4	+1.4	-0.28	-	+0.76	+0.76	+1.06
Acc	55%	54%	57%	57%	50%	59%	45%	-	61%	61%	57%
Perc	41	89	89	73	53	70	6	-	30	8	58

Selection Indexes	
\$A	\$A-L
\$183	\$350
70	47

**Traits Observed:** BWT, 600WT, SC, Scan (EMA, Rib, Rump, IMF), Genomics

**Notes:** S119 is a Resolution son with good direct calving and low birth weight which makes him a fantastic heifer sire option. He combines this with excellent growth and structural data making him a well balanced sire suitable for any herd.

Purchaser ..... \$ .....

## Lot 8

Yerwal Wisdom S41 <sup>SV</sup>

SEY21S41



Date of Birth: 25/03/2021  
 Registration Status: HBR  
 Mating Type: Natural  
 Genetic Status: AMF, CAF, DDF, NHF

CONNEALY ONWARD #  
 SITZ WISDOM 481T #  
 SITZ ELLUNA ELITE 94P #  
**Sire: SEYP264 YERWAL WISDOM P264 <sup>SV</sup>**  
 PAPA EQUATOR 2928 #  
 STONEY POINT YANKEE QUEEN X65 #  
 EASTFORK QUEEN 834 #

TE MANIA BERKLEY B1 <sup>PV</sup>  
 TE MANIA EMPEROR E343 <sup>PV</sup>  
 TE MANIA LOWAN Z74 <sup>PV</sup>  
**Dam: SEYL13 YERWAL L13 #**  
 EXAR UPSHOT 0562B #  
 YERWAL DREAM J22 #  
 VERMONT DREAM E117 <sup>PV</sup>

January 2023 TransTasman Angus Cattle Evaluation											
TACE	CE Dir	CE Dtrs	GL	BW	200	400	600	MCW	Milk	SS	DC
EBV	-3.3	-0.7	-2.6	+5.9	+61	+112	+145	+135	+14	+1.9	-3.9
Acc	53%	44%	68%	70%	69%	66%	71%	65%	58%	72%	38%
Perc	88	83	82	86	9	5	7	8	75	57	72
TACE	CWT	EMA	Rib	Rump	RBV	IMF	NFI-F	Doc	Claw	Angle	Leg
EBV	+90	+1.0	+1.0	+0.5	-0.4	+0.7	-0.04	+15	+0.90	+0.88	+0.84
Acc	58%	58%	59%	59%	53%	62%	49%	39%	64%	64%	59%
Perc	4	96	24	34	92	87	22	78	61	26	5

Selection Indexes	
\$A	\$A-L
\$170	\$326
79	65

**Traits Observed:** BWT, 600WT, SC, Scan (EMA, Rib, Rump, IMF), Genomics

**Notes:** S41 is a Wisdom son with exceptional growth data landing him in the top 10% or better for the breed in all growth traits. His positive fats will come into play when hitting the carcass grids with his progeny.

Purchaser ..... \$ .....







# Lot 11

# Yerwal Wisdom S89 <sup>SV</sup>



SEY21S89



Date of Birth: 29/05/2021  
Registration Status: HBR  
Mating Type: Natural  
Genetic Status: AMF, CAF, DDF, NHF

CONNEALY ONWARD #  
SITZ WISDOM 481T #  
SITZ ELLUNA ELITE 94P #  
**Sire: SEYP264 YERWAL WISDOM P264 <sup>SV</sup>**  
PAPA EQUATOR 2928 #  
STONE POINT YANKEE QUEEN X65 #  
EASTFORK QUEEN 834 #

CONNEALY ONWARD #  
SITZ UPWARD 307R <sup>SV</sup>  
SITZ HENRIETTA PRIDE 81M #  
**Dam: SEYJ4 YERWAL J4 #**  
STONE POINT BEST BET B99 <sup>PV</sup>  
YERWAL GIRL FRIEND G89 #  
YERWAL LOWAN X7 #

January 2023 TransTasman Angus Cattle Evaluation											
TACE 	CE Dir	CE Dtrs	GL	BW	200	400	600	MCW	Milk	SS	DC
EBV	+4.2	+5.1	-2.2	+2.5	+48	+83	+109	+84	+18	+2.4	-3.9
Acc	51%	42%	68%	71%	68%	65%	71%	64%	57%	72%	36%
Perc	38	28	86	18	63	72	68	78	42	36	72
TACE 	CWT	EMA	Rib	Rump	RBV	IMF	NFI-F	Doc	Claw	Angle	Leg
EBV	+64	+4.4	-1.7	-1.7	+0.4	+1.4	+0.37	+8	+0.84	+0.90	+0.88
Acc	57%	56%	58%	58%	52%	61%	48%	37%	63%	63%	56%
Perc	59	74	85	75	53	70	74	96	48	31	9

Selection Indexes	
\$A	\$A-L
\$177	\$308
75	76

**Traits Observed:** BWT, 600WT, SC, Scan (EMA, Rib, Rump, IMF), Genomics

**Notes:** A Wisdom son with good calving ease and low birth weight suitable for use on heifers. One of our picks of the draft this year, very docile and truck loads of meat.

Purchaser ..... \$ .....

# Lot 12

# Yerwal Wisdom S85 <sup>SV</sup>



SEY21S85



Date of Birth: 29/05/2021  
Registration Status: HBR  
Mating Type: Natural  
Genetic Status: AMF, CAF, DDF, NHF

CONNEALY ONWARD #  
SITZ WISDOM 481T #  
SITZ ELLUNA ELITE 94P #  
**Sire: SEYP264 YERWAL WISDOM P264 <sup>SV</sup>**  
PAPA EQUATOR 2928 #  
STONE POINT YANKEE QUEEN X65 #  
EASTFORK QUEEN 834 #

COONAMBLE Z3 <sup>PV</sup>  
YERWAL FULL THROTTLE F133 <sup>SV</sup>  
VERMONT JANE X30 #  
**Dam: SEYJ94 YERWAL J94 #**  
KAROO W109 DIRECTION Z181 <sup>SV</sup>  
YERWAL EVANGELINE E9 #  
YERWAL CALAMITY C6 #

January 2023 TransTasman Angus Cattle Evaluation											
TACE 	CE Dir	CE Dtrs	GL	BW	200	400	600	MCW	Milk	SS	DC
EBV	+4.2	+1.2	-4.4	+3.5	+38	+65	+81	+61	+16	+1.4	-4.7
Acc	51%	40%	66%	71%	68%	65%	71%	64%	55%	72%	33%
Perc	38	69	56	36	93	98	98	96	62	76	49
TACE 	CWT	EMA	Rib	Rump	RBV	IMF	NFI-F	Doc	Claw	Angle	Leg
EBV	+39	+4.2	+2.3	+2.9	-0.1	+2.2	+0.35	+15	+0.84	+0.84	+0.90
Acc	56%	55%	58%	58%	51%	60%	46%	31%	61%	61%	54%
Perc	99	76	8	6	82	47	72	75	48	19	12

Selection Indexes	
\$A	\$A-L
\$169	\$277
81	89

**Traits Observed:** BWT, 600WT, SC, Scan (EMA, Rib, Rump, IMF), Genomics

**Notes:** S85 is another Wisdom son suitable for heifers. He is in the top 10% of the breed for positive fats which greatly contributes to his doing ability.

Purchaser ..... \$ .....



















Lot 23

Yerwal Supreme S10 <sup>SV</sup>

SEY21S10



Date of Birth: 17/02/2021  
 Registration Status: HBR  
 Mating Type: Natural  
 Genetic Status: AMF, CAF, DDF, NHF

S A V FINAL ANSWER 0035 #  
 CONNEALY CAPITALIST 028 #  
 PRIDES PITA OF CONANGA 8821 #  
**Sire: LGSM505 SPRYS-W SUPREME M505 <sup>PV</sup>**  
 COOLANA NEW DESIGN 458N E52 <sup>SV</sup>  
 COOLANA NIGHTINGALE G281 #  
 COOLANA NIGHTINGALE D26 #

ARDROSSAN DIRECTION W109 <sup>PV</sup>  
 ROSELEIGH DUPONT D27 <sup>PV</sup>  
 ROSELEIGH SARAH S9 #  
**Dam: SEYH99 YERWAL DANDLOO H99 #**  
 STONEY POINT EQUATOR Y28 <sup>PV</sup>  
 YERWAL DELUXE D35 #  
 YERWAL WENDY W52 #

January 2023 TransTasman Angus Cattle Evaluation											
TACE	CE Dir	CE Dtrs	GL	BW	200	400	600	MCW	Milk	SS	DC
EBV	+2.9	+4.5	-4.4	+5.4	+52	+89	+134	+123	+16	+2.3	-4.6
Acc	54%	43%	64%	70%	69%	66%	71%	64%	55%	72%	34%
Perc	50	35	56	78	40	55	18	16	62	40	52
TACE	CWT	EMA	Rib	Rump	RBV	IMF	NFI-F	Doc	Claw	Angle	Leg
EBV	+68	+1.9	+0.7	+0.6	-0.6	+3.4	+0.15	+20	+0.98	+1.18	+1.16
Acc	58%	57%	59%	52%	52%	61%	47%	28%	61%	61%	57%
Perc	45	93	31	32	95	19	46	52	75	89	85

Selection Indexes	
\$A	\$A-L
\$184	\$344
68	52

**Traits Observed:** BWT, 600WT, SC, Scan (EMA, Rib, Rump, IMF), Genomics

**Notes:** S10 has an excellent birth to 600 day growth spread. He is positive fat with an excellent IMF of +3.4. Another Spry's Supreme son which based on history brings plenty of calving ease to the table.

Purchaser ..... \$ .....

Lot 24

Yerwal Resolution S132 <sup>SV</sup>

SEY21S132



Date of Birth: 13/06/2021  
 Registration Status: HBR  
 Mating Type: Natural  
 Genetic Status: AMF, CAF, DDF, NHF

MATAURI REALITY 839 #  
 MATAURI RESOLUTION F030 #  
 MATAURI 08817 #  
**Sire: SPL195 STERITA PARK L195 <sup>SV</sup>**  
 COONAMBLE Z3 <sup>PV</sup>  
 STERITA PARK H182 #  
 STERITA PARK Z4 <sup>PV</sup>

HYLINE RIGHT TIME 338 #  
 VERMONT RIGHT TIME E149 <sup>PV</sup>  
 VERMONT NANNY X199 <sup>SV</sup>  
**Dam: SEYK48 YERWAL K48 #**  
 B C C BUSHWACKER 41-93 #  
 YERWAL BARUNAH Y8 #  
 TE MANIA BARUNAH U293 #

January 2023 TransTasman Angus Cattle Evaluation											
TACE	CE Dir	CE Dtrs	GL	BW	200	400	600	MCW	Milk	SS	DC
EBV	+2.9	+6.4	-5.5	+4.8	+50	+91	+125	+121	+14	+1.2	-4.2
Acc	52%	42%	67%	70%	69%	67%	72%	64%	55%	73%	36%
Perc	50	16	37	67	53	47	33	18	79	82	64
TACE	CWT	EMA	Rib	Rump	RBV	IMF	NFI-F	Doc	Claw	Angle	Leg
EBV	+70	+5.1	+1.1	+1.1	+0.3	+1.1	+0.00	+21	+0.74	+1.02	+1.22
Acc	58%	57%	59%	59%	53%	61%	47%	30%	60%	60%	56%
Perc	40	65	23	23	60	78	26	47	26	61	93

Selection Indexes	
\$A	\$A-L
\$179	\$339
73	56

**Traits Observed:** BWT, 600WT, SC, Scan (EMA, Rib, Rump, IMF), Genomics

**Notes:** S132 has balanced data from calving ease through to 600 day growth with the added bonus traits of positive fats. Phenotypically like his sire L195 he structurally is impressive with good muscle and proven genetic longevity history throughout his pedigree.

Purchaser ..... \$ .....





Lot 27

Yerwal Wisdom S88 <sup>SV</sup>

SEY21S88



Date of Birth: 29/05/2021  
 Registration Status: HBR  
 Mating Type: Natural  
 Genetic Status: AMF, CAF, DDF, NHF

CONNEALY ONWARD #  
 SITZ WISDOM 481T #  
 SITZ ELLUNA ELITE 94P #  
**Sire: SEYP264 YERWAL WISDOM P264 <sup>SV</sup>**  
 PAPA EQUATOR 2928 #  
 STONEY POINT YANKEE QUEEN X65 #  
 EASTFORK QUEEN 834 #

COONAMBLE Z3 <sup>PV</sup>  
 YERWAL FULL THROTTLE F133 <sup>SV</sup>  
 VERMONT JANE X30 #  
**Dam: SEYJ117 YERWAL J117 #**  
 R/M ULTRA CASH FLOW 102 #  
 YERWAL TAMATHA D106 #  
 ICM TAMATHA R3+96 #

January 2023 TransTasman Angus Cattle Evaluation											
TACE	CE Dir	CE Dtrs	GL	BW	200	400	600	MCW	Milk	SS	DC
EBV	-4.3	-2.2	-2.9	+5.3	+39	+73	+86	+94	+13	+1.2	-3.6
Acc	52%	41%	64%	71%	68%	65%	71%	63%	55%	72%	33%
Perc	91	90	79	76	92	91	96	63	84	82	79
TACE	CWT	EMA	Rib	Rump	RBV	IMF	NFI-F	Doc	Claw	Angle	Leg
EBV	+41	+6.8	-2.7	-1.9	+1.5	+0.2	+0.03	+15	+0.88	+0.92	+0.92
Acc	56%	55%	57%	57%	51%	60%	45%	31%	64%	64%	57%
Perc	98	42	95	78	4	94	30	76	56	35	16

Selection Indexes	
\$A	\$A-L
\$119	\$224
97	97

**Traits Observed:** BWT, 600WT, SC, Scan (EMA, Rib, Rump, IMF), Genomics

**Notes:** S88 is in the top 4% for Retail Beef Yield. He is another P264 Wisdom son that phenotypically combines good structural traits with muscle and longevity.

Purchaser ..... \$ .....

Lot 28

Yerwal Gatsby S137 <sup>SV</sup>

SEY21S137



Date of Birth: 15/06/2021  
 Registration Status: HBR  
 Mating Type: Natural  
 Genetic Status: AMF, CAF, DDF, NHF

TUWHARETOA REGENT D145 <sup>PV</sup>  
 MILWILLAH GATSBY G279 <sup>PV</sup>  
 MILWILLAH LOWAN D112 <sup>SV</sup>  
**Sire: SEYP200 YERWAL GATSBY P200 <sup>PV</sup>**  
 WERNER WAR PARTY 2417 #  
 YERWAL LADY PARTY K110 #  
 LAGRAN LADY 5408 #

PAPA EQUATOR 2928 #  
 YERWAL KILIMANJARO K130 <sup>PV</sup>  
 LAGRAN LADY 5408 #  
**Dam: SEYM69 YERWAL M69 #**  
 VERMONT RIGHT TIME E149 <sup>PV</sup>  
 YERWAL J105 #  
 YERWAL FABLE F83 #

January 2023 TransTasman Angus Cattle Evaluation											
TACE	CE Dir	CE Dtrs	GL	BW	200	400	600	MCW	Milk	SS	DC
EBV	-5.5	-5.9	-4.2	+4.7	+39	+72	+93	+92	+15	-1.9	-4.5
Acc	51%	42%	65%	68%	68%	66%	71%	64%	56%	72%	35%
Perc	94	98	59	64	91	93	91	65	72	57	55
TACE	CWT	EMA	Rib	Rump	RBV	IMF	NFI-F	Doc	Claw	Angle	Leg
EBV	+52	+12.2	-1.1	-1.7	+2.4	+0.5	+0.55	+16	+1.08	+1.22	+1.02
Acc	57%	56%	58%	58%	52%	61%	48%	34%	59%	59%	56%
Perc	88	4	74	75	1	90	89	71	88	92	45

Selection Indexes	
\$A	\$A-L
\$151	\$253
90	94

**Traits Observed:** BWT, 600WT, SC, Scan (EMA, Rib, Rump, IMF), Genomics

**Notes:** S137 is in the top 1% for Retail Beef Yield and top 4% for eye muscle with moderate calving ease. A typical Gatsby son that should breed consistent and self replacing females but also weaners to hit the premiums you want.

Purchaser ..... \$ .....

ANGUS ANGUS ANGUS ANGUS ANGUS ANGUS ANGUS ANGUS ANGUS ANGUS



Lot 29

Yerwal Resolution S225 <sup>SV</sup>

SEY21S225



Date of Birth: 28/08/2021  
 Registration Status: HBR  
 Mating Type: Natural  
 Genetic Status: AMF, CAF, DDF, NHF

MATAURI RESOLUTION F030 #  
 STERITA PARK L195 <sup>SV</sup>  
 STERITA PARK H182 #  
**Sire: SEYP4 YERWAL RESOLUTION P4 <sup>PV</sup>**  
 YERWAL JUGGERNAUT J23 <sup>SV</sup>  
 YERWAL L159 <sup>SV</sup>  
 YERWAL CHIPPENDALE C41 #  
 CONNEALY EARNAN 076E <sup>PV</sup>  
 RAVENSWOOD LAST TYCOON L03 <sup>SV</sup>  
 STONEY POINT YANKEE QUEEN G39 #  
**Dam: SEYQ130 YERWAL Q130 #**  
 NAMPARA HAYMAKER H09 <sup>SV</sup>  
 YERWAL M51 #  
 YERWAL PANDA H39 #

January 2023 TransTasman Angus Cattle Evaluation											
TACE	CE Dir	CE Dtrs	GL	BW	200	400	600	MCW	Milk	SS	DC
EBV	-10.1	+3.1	-3.9	+8.0	+64	+120	+158	+165	+13	+1.4	-3.7
Acc	48%	37%	64%	68%	67%	64%	71%	63%	52%	71%	30%
Perc	99	50	65	99	5	2	2	1	81	76	77
TACE	CWT	EMA	Rib	Rump	RBV	IMF	NFI-F	Doc	Claw	Angle	Leg
EBV	+91	+7.8	-2.1	-2.0	+1.5	-0.4	-0.33	-	+0.90	+0.76	+1.20
Acc	55%	54%	56%	56%	49%	59%	44%	-	57%	57%	54%
Perc	4	31	90	79	4	98	5	-	61	8	91

Selection Indexes	
\$A	\$A-L
\$173	\$336
78	59

**Traits Observed:** BWT, 600WT, SC, Scan (EMA, Rib, Rump, IMF), Genomics

**Notes:** S225 smashes all the growth traits landing himself in the top 5% of the breed for both 200 day weight and then top 2% for both 400 and 600 day weight. But WEIGHT there's more he also lands in the top 4% for carcass weight of +91 and top 4% for Retail Beef Yield. This bull will breed those weaners that will hit the premiums you aspire to hit.

Purchaser ..... \$ .....

Lot 30

Yerwal Supreme S213 <sup>SV</sup>

SEY21S213



Date of Birth: 30/09/2021  
 Registration Status: HBR  
 Mating Type: Natural  
 Genetic Status: AMF, CAF, DDF, NHF

S A V FINAL ANSWER 0035 #  
 CONNEALY CAPITALIST 028 #  
 PRIDES PITA OF CONANGA 8821 #  
**Sire: LGSM505 SPRYS-W SUPREME M505 <sup>PV</sup>**  
 COOLANA NEW DESIGN 458N E52 <sup>SV</sup>  
 COOLANA NIGHTINGALE G281 #  
 COOLANA NIGHTINGALE D26 #  
 ARDROSSAN DIRECTION W109 <sup>PV</sup>  
 ROSELEIGH DUPONT D27 <sup>PV</sup>  
 ROSELEIGH SARAH S9 #  
**Dam: SEYH77 YERWAL BARUNAH H77 #**  
 B C MARATHON 7022 #  
 YERWAL ELEANOR E3 #  
 TE MANIA BARUNAH R234+96 #

January 2023 TransTasman Angus Cattle Evaluation											
TACE	CE Dir	CE Dtrs	GL	BW	200	400	600	MCW	Milk	SS	DC
EBV	-1.7	+0.5	-2.2	+5.3	+41	+77	+106	+94	+15	+2.3	-2.3
Acc	53%	41%	65%	69%	70%	67%	71%	66%	56%	70%	34%
Perc	82	75	86	76	89	86	76	62	73	40	95
TACE	CWT	EMA	Rib	Rump	RBV	IMF	NFI-F	Doc	Claw	Angle	Leg
EBV	+49	+4.0	-0.3	-0.5	+0.9	+1.0	+0.04	+19	+0.92	+1.04	+0.96
Acc	59%	58%	60%	60%	54%	62%	47%	28%	63%	63%	57%
Perc	92	78	55	53	22	80	31	52	64	65	26

Selection Indexes	
\$A	\$A-L
\$129	\$241
96	96

**Traits Observed:** BWT, 600WT, SC, Scan (EMA, Rib, Rump, IMF), Genomics

**Notes:** Another Supreme son which needs no introduction. S213 phenotypically looks sound and is jam packed with muscle where it counts. A bull with a lot of potential and in the youngest part of the draft he has a lot of potential ahead of him.

Purchaser ..... \$ .....











Lot 37

Yerwal Wisdom S185 <sup>SV</sup>

SEY21S185



Date of Birth: **04/09/2021**  
 Registration Status: **HBR**  
 Mating Type: **Natural**  
 Genetic Status: **AMF, CAF, DDF, NHF**

CONNEALY ONWARD #  
 SITZ WISDOM 481T #  
 SITZ ELLUNA ELITE 94P #  
**Sire: SEYP264 YERWAL WISDOM P264 <sup>SV</sup>**  
 PAPA EQUATOR 2928 #  
 STONEY POINT YANKEE QUEEN X65 #  
 EASTFORK QUEEN 834 #

ARDROSSAN CONNECTION X15 <sup>SV</sup>  
 STERITA PARK C85 <sup>SV</sup>  
 STERITA PARK Z18 #  
**Dam: SEYJ115 YERWAL J115 #**  
 STONEY POINT BEST BET B99 <sup>PV</sup>  
 YERWAL GUMBIE G96 #  
 YERWAL CORNETTO C90 #

January 2023 TransTasman Angus Cattle Evaluation											
<b>TACE</b>	CE Dir	CE Dtrs	GL	BW	200	400	600	MCW	Milk	SS	DC
<b>EBV</b>	<b>+0.8</b>	<b>+2.8</b>	<b>-3.7</b>	<b>+4.6</b>	<b>+47</b>	<b>+85</b>	<b>+106</b>	<b>+102</b>	<b>+17</b>	<b>+2.5</b>	<b>-4.6</b>
Acc	50%	39%	64%	67%	68%	65%	70%	63%	55%	71%	32%
Perc	67	53	68	62	67	66	74	49	49	33	52
<b>TACE</b>	CWT	EMA	Rib	Rump	RBV	IMF	NFI-F	Doc	Claw	Angle	Leg
<b>EBV</b>	<b>+65</b>	<b>-0.2</b>	<b>-2.5</b>	<b>-2.8</b>	<b>+0.2</b>	<b>+2.1</b>	<b>+0.31</b>	<b>+14</b>	<b>+0.68</b>	<b>+0.92</b>	<b>+0.90</b>
Acc	56%	55%	57%	57%	51%	60%	45%	30%	64%	64%	59%
Perc	55	99	94	89	66	50	67	82	17	35	12

Selection Indexes	
\$A	\$A-L
<b>\$152</b>	<b>\$288</b>
89	85

**Traits Observed:** BWT, 600WT, SC, Scan (EMA, Rib, Rump, IMF), Genomics

**Notes:** A spring drop bull S185 has great growth for age. These spring drop bulls in theory should give you an extra season.

Purchaser ..... \$ .....

Lot 38

Yerwal Wisdom S191 <sup>SV</sup>

SEY21S191



Date of Birth: **05/09/2021**  
 Registration Status: **HBR**  
 Mating Type: **Natural**  
 Genetic Status: **AMF, CAF, DDF, NHF**

CONNEALY ONWARD #  
 SITZ WISDOM 481T #  
 SITZ ELLUNA ELITE 94P #  
**Sire: SEYP264 YERWAL WISDOM P264 <sup>SV</sup>**  
 PAPA EQUATOR 2928 #  
 STONEY POINT YANKEE QUEEN X65 #  
 EASTFORK QUEEN 834 #

SITZ UPWARD 307R <sup>SV</sup>  
 STONEY POINT GENERATION X G238 <sup>SV</sup>  
 VERMONT CHAMPAGNE C348 <sup>PV</sup>  
**Dam: SEYL89 YERWAL L89 #**  
 BON VIEW BANDO 598 #  
 YERWAL BARUNAH Y39 #  
 TE MANIA BARUNAH R234+96 #

January 2023 TransTasman Angus Cattle Evaluation											
<b>TACE</b>	CE Dir	CE Dtrs	GL	BW	200	400	600	MCW	Milk	SS	DC
<b>EBV</b>	<b>-0.8</b>	<b>+0.0</b>	<b>-2.0</b>	<b>+4.0</b>	<b>+49</b>	<b>+91</b>	<b>+116</b>	<b>+88</b>	<b>+16</b>	<b>+4.0</b>	<b>-4.6</b>
Acc	51%	41%	65%	68%	69%	66%	71%	64%	57%	72%	35%
Perc	77	78	88	48	54	50	54	72	61	4	52
<b>TACE</b>	CWT	EMA	Rib	Rump	RBV	IMF	NFI-F	Doc	Claw	Angle	Leg
<b>EBV</b>	<b>+62</b>	<b>+4.8</b>	<b>-1.7</b>	<b>-2.3</b>	<b>+0.3</b>	<b>+2.2</b>	<b>+0.30</b>	<b>+11</b>	<b>+0.86</b>	<b>+0.98</b>	<b>+1.06</b>
Acc	58%	57%	59%	59%	52%	61%	47%	32%	63%	63%	54%
Perc	64	69	85	83	60	47	66	89	52	51	58

Selection Indexes	
\$A	\$A-L
<b>\$180</b>	<b>\$306</b>
72	77

**Traits Observed:** BWT, 600WT, SC, Scan (EMA, Rib, Rump, IMF), Genomics

**Notes:** Another P264 son S191 is a bull with an exceptional maternal pedigree. Look for him to produce your long term replacement females with confidence.

Purchaser ..... \$ .....



Lot 39

Yerwal Supreme S61 <sup>SV</sup>

SEY21S61



Date of Birth: 10/04/2021  
 Registration Status: HBR  
 Mating Type: Natural  
 Genetic Status: AMF, CAF, DDF, NHF

S A V FINAL ANSWER 0035 #  
 CONNEALY CAPITALIST 028 #  
 PRIDES PITA OF CONANGA 8821 #  
**Sire: LGSM505 SPRYS-W SUPREME M505 <sup>PV</sup>**  
 COOLANA NEW DESIGN 458N E52 <sup>SV</sup>  
 COOLANA NIGHTINGALE G281 #  
 COOLANA NIGHTINGALE D26 #  
 ARDROSSAN CONNECTION X15 <sup>SV</sup>  
 STERITA PARK C85 <sup>SV</sup>  
 STERITA PARK Z18 #  
**Dam: SEYG58 YERWAL GRETA G58 #**  
 STONEY POINT BEST BET B99 <sup>PV</sup>  
 YERWAL EMERALD E22 #  
 YERWAL BLAZE B25 #

January 2023 TransTasman Angus Cattle Evaluation											
TACE	CE Dir	CE Dtrs	GL	BW	200	400	600	MCW	Milk	SS	DC
EBV	+9.6	+7.3	-3.7	+0.9	+39	+73	+91	+62	+16	+1.7	-2.8
Acc	52%	42%	65%	70%	70%	67%	71%	65%	56%	72%	35%
Perc	3	10	68	4	91	92	93	96	65	65	91
TACE	CWT	EMA	Rib	Rump	RBV	IMF	NFI-F	Doc	Claw	Angle	Leg
EBV	+54	+4.5	-0.1	-0.1	+0.3	+2.4	+0.02	+17	+1.12	+1.18	+1.2
Acc	58%	58%	59%	60%	53%	62%	48%	28%	59%	59%	54%
Perc	84	73	50	45	60	41	29	68	92	89	91

Selection Indexes	
\$A	\$A-L
\$174	\$294
77	83

**Traits Observed:** BWT, 600WT, SC, Scan (EMA, Rib, Rump, IMF), Genomics

**Notes:** Here he is our pick of the heifer bulls landing him in the top 3% with + 9.6 for direct calving ease and in the top 4% for low birth weight +0.9. Top that off with his pedigree to backup the calving ease traits sired by the Sprys Supreme. Catalogued at the end part of the sale due to him having a set back a month prior to the sale date. Don't let this shy you away of a very handy sire.

Purchaser ..... \$ .....

Lot 40

Yerwal Wisdom S98 <sup>SV</sup>

SEY21S98



Date of Birth: 03/06/2021  
 Registration Status: HBR  
 Mating Type: Natural  
 Genetic Status: AMF, CAF, DDF, NHF

CONNEALY ONWARD #  
 SITZ WISDOM 481T #  
 SITZ ELLUNA ELITE 94P #  
**Sire: SEYP264 YERWAL WISDOM P264 <sup>SV</sup>**  
 PAPA EQUATOR 2928 #  
 STONEY POINT YANKEE QUEEN X65 #  
 EASTFORK QUEEN 834 #  
 CONNEALY ONWARD #  
 SITZ UPWARD 307R <sup>SV</sup>  
 SITZ HENRIETTA PRIDE 81M #  
**Dam: SEYJ29 YERWAL DREAM J29 <sup>SV</sup>**  
 LEACHMAN RIGHT TIME <sup>SV</sup>  
 VERMONT DREAM E117 <sup>PV</sup>  
 VERMONT DREAM Y301 <sup>PV</sup>

January 2023 TransTasman Angus Cattle Evaluation											
TACE	CE Dir	CE Dtrs	GL	BW	200	400	600	MCW	Milk	SS	DC
EBV	+7.5	+7.3	-6.2	+1.7	+53	+95	+121	+85	+18	+1.3	-4.7
Acc	55%	46%	67%	71%	70%	67%	72%	66%	59%	73%	38%
Perc	12	10	27	9	36	37	42	76	44	80	49
TACE	CWT	EMA	Rib	Rump	RBV	IMF	NFI-F	Doc	Claw	Angle	Leg
EBV	+74	+5.2	+0.4	-0.3	+0.2	+0.6	+0.18	+10	+0.74	+0.70	+1.02
Acc	59%	59%	60%	61%	54%	63%	50%	39%	65%	65%	57%
Perc	27	64	37	49	66	88	50	92	26	4	45

Selection Indexes	
\$A	\$A-L
\$213	\$363
37	37

**Traits Observed:** BWT, 600WT, SC, Scan (EMA, Rib, Rump, IMF), Genomics

**Notes:** This is another standout heifer sire out of one of our donor dams. S98 should have been at the top end of catalogue however at the time of cataloguing he was slightly injured and treated pending recovery. He is an outstanding heifer prospect with low birth weight in the top 9% of +1.7 and great direct calving ease of +7.5 with great growth data throughout. J29 his dam is currently in our team and breeds year after year. If you are looking for one of the strongest pedigrees to breed weaners or those replacement females this is the bull for you.

Purchaser ..... \$ .....

ANGUS ANGUS ANGUS ANGUS ANGUS ANGUS ANGUS ANGUS



## Lot 41

Yerwal Resolution S174 <sup>SV</sup>

## SEY21S174



Date of Birth: 20/08/2021  
 Registration Status: **HBR**  
 Mating Type: **Natural**  
 Genetic Status: **AMF, CAF, DDF, NHF**

MATAURI REALITY 839 #  
 MATAURI RESOLUTION F030 #  
 MATAURI 08817 #  
**Sire: SP1195 STERITA PARK L195 <sup>SV</sup>**  
 COONAMBLE Z3 <sup>PV</sup>  
 STERITA PARK H182 #  
 STERITA PARK Z4 <sup>PV</sup>

HYLINE RIGHT TIME 338 #  
 VERMONT RIGHT TIME E149 <sup>PV</sup>  
 VERMONT NANNY X199 <sup>SV</sup>  
**Dam: SEYP59 YERWAL P59 #**  
 BT RIGHT TIME 24J #  
 YERWAL ELIZABETH E5 #  
 YERWAL CINDERELLA C35 #

January 2023 TransTasman Angus Cattle Evaluation											
<b>TACE</b>	CE Dir	CE Dtrs	GL	BW	200	400	600	MCW	Milk	SS	DC
<b>EBV</b>	<b>+2.0</b>	<b>+3.6</b>	<b>-6.6</b>	<b>+3.2</b>	<b>+35</b>	<b>+63</b>	<b>+83</b>	<b>+61</b>	<b>+12</b>	<b>+2.9</b>	<b>-6.0</b>
Acc	52%	42%	69%	72%	71%	68%	73%	66%	57%	74%	38%
Perc	58	45	22	30	97	98	97	96	88	20	17
<b>TACE</b>	CWT	EMA	Rib	Rump	RBV	IMF	NFI-F	Doc	Claw	Angle	Leg
<b>EBV</b>	<b>+41</b>	<b>+3.8</b>	<b>+2.5</b>	<b>+4.1</b>	<b>-0.4</b>	<b>+1.8</b>	<b>+0.36</b>	<b>+21</b>	<b>+0.44</b>	<b>+0.68</b>	<b>+1.08</b>
Acc	59%	59%	61%	61%	55%	63%	49%	30%	39%	39%	34%
Perc	98	80	6	2	92	59	73	46	1	3	65

Selection Indexes	
\$A	\$A-L
<b>\$162</b>	<b>\$274</b>
85	89

**Traits Observed:** BWT, 600WT, SC, Scan (EMA, Rib, Rump, IMF), Genomics

**Notes:** S174 is a great heifer bull option with a low birth weight and positive fats. He is in the top 2% for rump fat and top 6% for rib fat with great structural data to add to him.

Purchaser ..... \$ .....

## Lot 42

Yerwal Wisdom S190 <sup>SV</sup>

## SEY21S190



Date of Birth: 05/09/2021  
 Registration Status: **HBR**  
 Mating Type: **Natural**  
 Genetic Status: **AMF, CAF, DDF, NHF**

CONNEALY ONWARD #  
 SITZ WISDOM 481T #  
 SITZ ELLUNA ELITE 94P #  
**Sire: SEYP264 YERWAL WISDOM P264 <sup>SV</sup>**  
 PAPA EQUATOR 2928 #  
 STONEY POINT YANKEE QUEEN X65 #  
 EASTFORK QUEEN 834 #

HYLINE RIGHT TIME 338 #  
 VERMONT RIGHT TIME E149 <sup>PV</sup>  
 VERMONT NANNY X199 <sup>SV</sup>  
**Dam: SEYK31 YERWAL K31 #**  
 YERWAL CARIBBEAN C20 <sup>PV</sup>  
 YERWAL ESPRIT E88 #  
 YERWAL YIPI Y4 #

January 2023 TransTasman Angus Cattle Evaluation											
<b>TACE</b>	CE Dir	CE Dtrs	GL	BW	200	400	600	MCW	Milk	SS	DC
<b>EBV</b>	<b>+6.6</b>	<b>+3.2</b>	<b>-3.1</b>	<b>+2.4</b>	<b>+41</b>	<b>+77</b>	<b>+93</b>	<b>+63</b>	<b>+13</b>	<b>+1.3</b>	<b>-2.1</b>
Acc	52%	41%	64%	68%	68%	65%	71%	63%	55%	72%	33%
Perc	18	49	77	17	88	86	92	95	83	80	96
<b>TACE</b>	CWT	EMA	Rib	Rump	RBV	IMF	NFI-F	Doc	Claw	Angle	Leg
<b>EBV</b>	<b>+48</b>	<b>+5.9</b>	<b>+0.7</b>	<b>+1.7</b>	<b>+0.4</b>	<b>+1.6</b>	<b>+0.35</b>	<b>+15</b>	<b>+0.78</b>	<b>+0.64</b>	<b>+0.80</b>
Acc	56%	55%	57%	57%	51%	60%	45%	31%	64%	64%	57%
Perc	93	54	31	16	53	65	72	78	34	2	3

Selection Indexes	
\$A	\$A-L
<b>\$175</b>	<b>\$289</b>
76	85

**Traits Observed:** BWT, 600WT, SC, Scan (EMA, Rib, Rump, IMF), Genomics

**Notes:** A P264 Wisdom son with great low birth weight of +2.4 and good cawling ease. S190 is the ideal heifer bull option with positive fats

Purchaser ..... \$ .....

Date of Birth: 04/09/2021

Registration Status: HBR

Mating Type: Natural

Genetic Status: AMF, CAF, DDF, NHF



CONNEALY ONWARD #  
 SITZ WISDOM 481T #  
 SITZ ELLUNA ELITE 94P #  
**Sire: SEYP264 YERWAL WISDOM P264 <sup>SV</sup>**  
 PAPA EQUATOR 2928 #  
 STONEY POINT YANKEE QUEEN X65 #  
 EASTFORK QUEEN 834 #

CONNEALY CAPITALIST 028 #  
 LD CAPITALIST 316 <sup>PV</sup>  
 LD DIXIE ERICA 2053 #  
**Dam: SEYP100 YERWAL P100 #**  
 WERNER WAR PARTY 2417 #  
 YERWAL LADY PARTY K110 #  
 LAGRAND LADY 5408 #

January 2023 TransTasman Angus Cattle Evaluation											
<b>TACE</b>	CE Dir	CE Dtrs	GL	BW	200	400	600	MCW	Milk	SS	DC
<b>EBV</b>	+5.2	+6.3	-6.4	+2.8	+46	+76	+98	+66	+18	+2.3	-3.6
Acc	51%	42%	65%	68%	68%	66%	71%	64%	57%	72%	35%
Perc	29	17	24	23	72	87	86	94	44	40	79
<b>TACE</b>	CWT	EMA	Rib	Rump	RBV	IMF	NFI-F	Doc	Claw	Angle	Leg
<b>EBV</b>	+46	+7.2	+0.2	-0.3	+0.3	+2.5	+0.45	+13	+0.84	+0.90	+0.90
Acc	58%	57%	59%	59%	52%	61%	47%	38%	66%	66%	60%
Perc	95	37	42	49	60	38	82	84	48	31	12

Selection Indexes	
\$A	\$A-L
<b>\$195</b>	<b>\$315</b>
57	73

**Traits Observed:** BWT, 600WT, SC, Scan (EMA, Rib, Rump, IMF), Genomics

**Notes:** Last but not least to end our 2023 sale. S186 is a great heifer bull option with +2.8 for birth weight and good calving ease daughters of +6.3 to breed those replacement females.

Purchaser ..... \$ .....



**BARRKEL PETERS WORKING DOGS  
 AND LIVESTOCK WEANER EDUCATION**

**PETER BARR 0417 905 585**







# YERWAL ESTATE

Simmental and Angus Stud

## Complimentary Transport

Yerwal Estate provide complimentary transport of their sold bulls to a variety of locations and can be arranged upon request.

From Lucindale, South Australia to Rockhampton, Queensland and anywhere in between.

Contact Regan to find out more.



# YERWAL ESTATE

Simmental and Angus Stud

A selection of our Yerwal Estate Angus, SimAngus, Red, Black and Traditional bulls will be available at the sales below.

## Save the Dates 2023

February  
**14th**

February All Breeds  
Bull & Female Sale  
CQLX Gracemere  
Queensland

June  
**23rd**

AG-Grow Elite Multi-Breed  
Beef Bull Sale  
Emerald  
Queensland

July  
**31st**

Queensland  
Simmental Bull Sale  
CQLX Gracemere  
Queensland



# YERWAL ESTATE

Simmental and Angus Stud



## February All Breeds Bull & Female Sale

**Tuesday 14th February 2023**

CQLX Gracemere, Queensland  
Selling 17 Angus, SimAngus and  
Simmental Bulls online via StockLive



Angus Lot 419 Yerwal Estate Patriot S36



Angus Lot 420 Yerwal Estate Patriot S70



Angus Lot 421 Yerwal Estate Wisdom S151



SimAngus Lot 422 Yerwal Estate Slim-Shadey S202



SimAngus Lot 423 Yerwal Estate Six Pack S264



Simmental Lot 431 Yerwal Estate Shockwave S179



Simmental Lot 432 Yerwal Estate Schooner S060





**Simmental Lot 433 Yerwal Estate Sensation S206**



**Simmental Lot 434 Yerwal Estate Submersible S214**



**Simmental Lot 435 Yerwal Estate Summit S061**



**Simmental Lot 436 Yerwal Estate Siren S219**



**Simmental Lot 437 Yerwal Estate Superliner S185**



**Simmental Lot 438 Yerwal Estate Surf 'N' Turf S204**



**Simmental Lot 439 Yerwal Estate Stockman S216**



**Simmental Lot 441 Yerwal Estate Stanley S1650**



**Simmental Lot 442 Yerwal Estate Spotify S223**



**Simmental Lot 443 Yerwal Estate Scotch Whiskey S065**







[www.qldsimmmentalbullsale.com.au](http://www.qldsimmmentalbullsale.com.au)

Black Simmental Yerwal Estate Senator S017  
pictured below will be offered in July sale

In addition to their own sales in South Australia, **Yerwal Estate Simmental Stud** will be offering seventeen bulls at the Queensland Simmental Bull Sale at the CQLX Selling Complex, Gracemere on 31st July 2023.



Our top priced Simmental bull sold for \$34,000 at the 2022 Queensland Simmental Bull Sale. Yerwal Estate Rockhampton sold to D&A Humphries of Jericho, Queensland to who run a large scale Simbrah program.

2022 saw Yerwal Estate draft 13 bulls in the Queensland Simmental Bull Sale at Gracemere (Queensland) in July. In a strong market but with many Queensland Commercial Cattle Operations yet to see rain Yerwal bulls performed very strongly achieving a 100% clearance at an average of \$13,428. Following the sale demand was extremely strong with a number of Yerwal Estate Traditional and Black bulls sold into Queensland in the following months. The Northern market has a preference for a larger framed animal with progeny frequently growing out to suit both the Jap Ox and Bullock Markets over high bos indicus content females. This year Yerwal has carefully selected bulls of a type desirable to Southern Markets which are on offer right here in South Australia with a second consignment once again headed to Queensland in July.

Yerwal Estate has been selling bulls into the Queensland Market for many years and in recent years bulls were sold into Duaringa, Maryborough and Rolleston. These bulls have been used primarily over high bos-indicus content cattle which is a contrast to the bulls sold in southern states. In these locations Yerwal Estate bulls are most

commonly used over Angus, in Commercial and Stud Simmental Operations and also in operations targeting the heavy Vealer trade. This demonstrates the versatility of the Simmental Breed and the strength of Yerwal Estate's offering.

The Queensland Simmental Bull Sale currently has 140 bulls nominated from 13 different studs representing every main land state in Australia. The sale is unique in that the following commitments must be adhered to by all vendors.

#### **DEMONSTRATE INTEGRITY OF BULLS TO PROVIDE BUYERS "PIECE OF MIND"**

Science and independent experts are a great way to assist in assessing the suitability of a sale bull. All bulls entered in the sale must be vet checked, DNA verified to sire, mouthed (to provide an indication of age), semen tested (morphology testing optional), EMA, IMF, P8, Rib and Scrotal Circumference measured. Bulls are also weighed at sale location to provide buyers with a true representation of weight.

All bulls entered are 8/8 registered purebred with the Simmental Association of Australia or Fleckvieh Association of Australia to guarantee buyers of hybrid vigour which is critical for an F1 cross.

#### **NO HOOF TRIMMING OR BODY CLIPPING NO EXCEPTIONS**

A purchasing decision including consideration of coat or feet type at sale should be genuine. Animal soundness evaluations are to indicate no visual evidence of hoof-trimming on certificates. Vendor participation is also based on head and neck clipping being permitted (though not preferred).

Cutting hair from ears, under pizzle, bottom of tail and spikes on top of tail set with scissors is the preferred presentation of sale bulls for the astute cattle producer.

#### **VACCINATIONS ARE IMPORTANT AND SO IS BIO-SECURITY**

No one wants to introduce pesti-virus or any other disease into a breeding herd that is healthy and free from bio-security risks. Mandatory (Minimum) Vaccinations for bulls in the Queensland Simmental Bull Sale are 3-Germ (blooded), 3- Day Sickness, 7-1, Botulism with Bulls tested Pesti-Virus Free.

#### **A SALE WITH A "BIG TAIL ON IT" IS A WASTE OF TIME FOR BUYERS AND VENDORS**

In no instances will a bull previously entered in another sale (or advertised for sale independently) be eligible for entry to this sale. There are absolutely no exceptions to this rule and any vendor attempting to do this will be immediately removed from the sale. The tight entry conditions and theme of the sale have also been created to minimise "any tail" in bulls.

**FURTHER INFORMATION ON THE QUEENSLAND SIMMENTAL BULL SALE CAN BE FOUND AT [www.qldsimmmentalbullsale.com.au](http://www.qldsimmmentalbullsale.com.au) OR BY VISITING THE QUEENSLAND SIMMENTAL BULL SALE FACEBOOK PAGE.**

Regan Burow, Yerwal Estate  
Telephone 08 8769 6168 or 0419 817 669  
Email [regan@yerwalestate.com](mailto:regan@yerwalestate.com)

Stud Stock Marketing Services  
Telephone 07 3063 4564  
Email [gday@studstockmarketing.com.au](mailto:gday@studstockmarketing.com.au)

**YERWAL**  
**ESTATE**  
Simmental and Angus Stud

# BUYERS INSTRUCTIONS



## Purchaser Details

Trading Name \_\_\_\_\_

Contact Person \_\_\_\_\_

Postal Address \_\_\_\_\_

Telephone \_\_\_\_\_ Facsimile \_\_\_\_\_

Mobile \_\_\_\_\_ Email \_\_\_\_\_

## Consignment Details

Lots Purchased \_\_\_\_\_

\_\_\_\_\_

\_\_\_\_\_

Road Carrier's Name and Contact Details (if required) \_\_\_\_\_

\_\_\_\_\_

Delivery Instructions and Mud Map \_\_\_\_\_

\_\_\_\_\_

\_\_\_\_\_

\_\_\_\_\_

Signature of Buyer \_\_\_\_\_

PLEASE NOTE: All buyers are required to complete this form and supply it to the selling agents prior to leaving Yerwal Estate. No verbal instructions will be accepted.



# WHERE TO FIND US



## **Lawrey's Road (off Coles Spence Road), Lucindale, South Australia**

### **From Naracoorte**

Travel 26kms west of Naracoorte on the Lucindale Road turn left (south) onto Coles Spence Road for 15kms then turn right into Lawrey's Road for 2kms.

### **From Penola**

Travel 5kms on the Naracoorte Road and turn left onto the Maaoupe Road to Lucindale for 22kms, turn left at the South Killanoola cattle yards for 6kms on gravel, turn right onto Coles Killanoola Road for ½ km, turn left onto Coles Spence Road for 12kms and left onto Lawrey's Road for 2kms.

# ANGUS FEATURE LOTS

**Lot 2** Yerwal Resolution S117



**Lot 11** Yerwal Wisdom S89



**Lot 21** Yerwal Resolution S107





# YE



## YERWAL ESTATE

**For further information please contact Regan Burow**

Lawrey's Road, Lucindale SA 5272  
PMB 73, Naracoorte SA 5271

T/F 08 8769 6168 M 0419 817 669  
E [regan@yerwalestate.com](mailto:regan@yerwalestate.com) W [www.yerwalestate.com](http://www.yerwalestate.com)