



Simmental
AUSTRALIA

SUMMER 2023



The next level in performance

SEMEN & EMBRYOS FOR SALE

Junior Champion Bull Sydney Royal Show 2023



AI SIRE FOR 2024 (SHLPS020)
HOBBS LIVESTOCK SUDDEN IMPACT S20

\$14,000 Top Priced Bull at Hobbs Livestock Inaugural On Property Sale



DONOR COW (SHLPRO02)
HOBBS LIVESTOCK VIOLET R2



DONOR COW (SHLPH003)
HOBBS LIVESTOCK HONEY BEE H3



DONOR COW (SHLPP007)
HOBBS LIVESTOCK KEEPSAKE P7



AI SIRE FOR HOBBS LIVESTOCK
HOBBS LIVESTOCK TAKE A WALK WITH ME T5

**HOBBS LIVESTOCK
BULL SALE
AUGUST
2024**



STUART & KYLIE HOBBS
Molong NSW

0400 660 968
hobbslivestock17@gmail.com



WILLANDRA

SIMMENTAL

Since 1972

PROVEN PEDIGREE, GUARANTEED PERFORMANCE

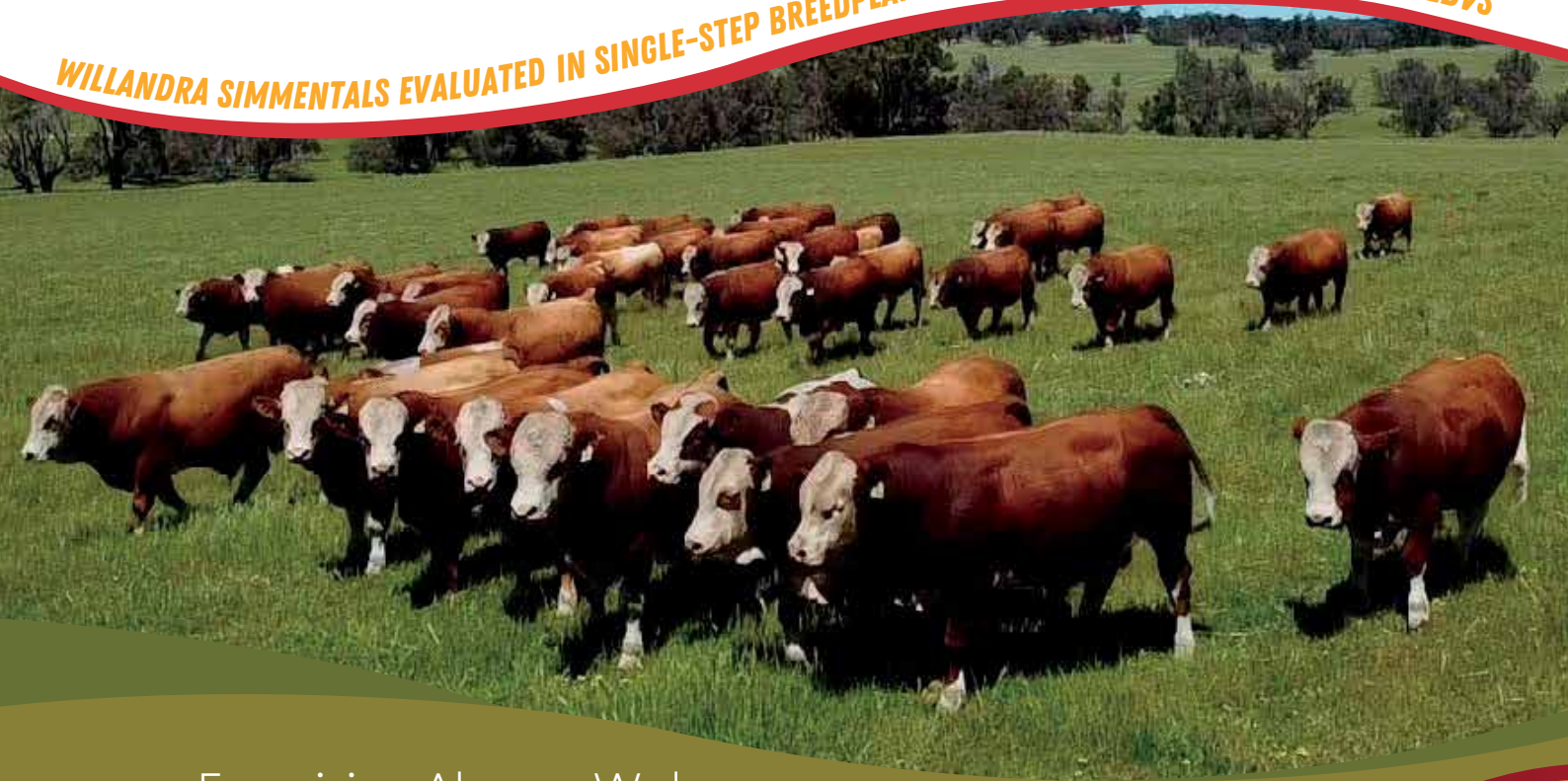
C.A.S. Cowcher & Son
Williams, W.A.

Willandra 36th Annual On-Property Sale

February 20th 2024

Offering 36 Elite Simmental Bulls

WILLANDRA SIMMENTALS EVALUATED IN SINGLE-STEP BREEDPLAN PROVIDING GENOMICALLY ENHANCED EBVS



Enquiries Always Welcome

JBAS-8 Assurance

Free Delivery within WA on all sale lots

50% rebate on delivery interstate

Charles & Beryl Cowcher
T (08) 9885 6058
ccowcher@westnet.com.au

Peter & Jen Cowcher
T (08) 9885 6014 M 0428 169 630
willandra@westnet.com.au



 Find us on
Facebook

willandrafarming.com.au



Simmental
AUSTRALIA

Summer 2023

OFFICE CONTACTS

Simmental Australia

PO Box 216, Inverell 2360

Hours: 8.00am to 4.00pm

Phone: 02 6933 1214

Phone: +61 488 062 287

office@simmental.com.au

Felicity Reeves

Executive Officer

Ph: +61 488 062 287

office@simmental.com.au

Registrar Services

at Genetic Hub

Registrar

Ph: 02 6933 1214

office@genetichub.com.au

Simmental Australia (A.S.B.A. Pty Ltd) ABN 72 000 885 834 reserves the right to reject any article, advertisement, photo or report in its Annual magazine, Website, Facebook or any other Simmental Publication, printed or electronically, if in the opinion of the Board the previously mentioned points are not in keeping with the aims of the Society, or the photos, reports or articles are not of, or do not refer to animals registered with Simmental Australia. While every effort is made to the accuracy of information contained in the publication the Editor & Board of Simmental Australia takes no responsibility for any Errors & Omissions contained within.

Contents

President's Message	5	11 Bulls Cleared at Slopes & Roland Sale	36
Executive Officer's Report	6	Batesy and Batman Taking On The Best	38
Federal, State Councillors	7	Lila Burton Scoring Strongly At A Young Age	40
Ekka - Best Breed Again	8	WSFF Congress 2024 Schedule	42
Beef Queensland's Biggest Export	9	Vale - Bernard Evans 1945-2023	44
Hartfield Strikes Success in First Sydney Show	10	Royal Brisbane Show 2023 Results	46
Charlie's Trip of a Lifetime to South America Solidifies Career Pathway	11	Royal Sydney Show 2023 Results	47
Australia Joins Forces with American Genetic Benchmarking Program	12-13	Royal Canberra Show 2023 Results	47
Hobbs Family Flood	14-15	Royal Adelaide Show 2023 Results	48
How The Breed Has Changed And Is Adapting - From The Eyes of A Scanner	16	Royal Toowoomba Show 2023 Results	49
NSW Overview from Secretary Jenny Bullen	18	Royal Perth Show 2023 Results	49
Chance Canadian Journey Steers Grant Bulloch's Path	18-19	Royal Melbourne Show 2023 Results	50
From Full Blood German Simmentals With Scottish Monikers to Maintaining a Genetic Cradle	22-25	Royal Launceston Show 2023 Results	50
Gains With Simmental Greaves Cross Packs on the Kilos	26-27	Sale Averages 2001-2023	51
Simmental-Angus Cross Wins On The Hook Adelaide Royal Show Led Steer Content	28-29	Total Sale Revenue 2001-2023	51
Myponga Siblings Make Royal Adelaide Show Debut	29	IGS EPD Averages	52
Simmentals Have Opportunity To Dominate - Glental Partnership	30-31	Accuracy and Possible Change	52
NSW Simmental Youth Report 2023	32-33	EPD Ranking	53
A Labour Of Love Since The Age of 5 For Brodhi	34	Sale Results: A Sneak Peek	54-60
Kidman Downs Sponsors Tassie Junior Beef Expo	36	Simmental Belt Buckle Raffle	61
		Top 25 Accredited Sires	62
		New Accredited AI Sires	63
		Top 10 Donor Dams	63
		Members' Directory	65-76
		Calendar of Events	77
		Advertisers' Index	78

ASBA wishes to acknowledge those who contributed photos to this magazine.

While all care has been taken, photos may not have been captioned the contributor's name. We thank ACM, Farm Weekly, Emily H Photography, Kent B Ward, QCL, Struan Pearce, Branded Ag, our members and those who have tagged us on social media and more. We really appreciate your input.

Our front cover photo was won by Ruby Canning from Mavstar Simmentals of Victoria. Ruby was given a full page ad for her fantastic photo.

PRESIDENT'S REPORT

By Phillip Partridge



2023 has been a challenging year, with the correction of beef prices, and the concern of more challenging seasonal conditions. Despite this, Simmental sales have remained strong throughout the country. The diversity of our breed has continued to offer commercial cattle producers a high-quality, profitable product.

After extensive consultation with Dr Michael MacNeil, Delta G, and Graham Winnell, Australian Genetic Solutions, the Australian Terminal Index (ATI) and the Australian All Purpose Index (AAPI) were released to members earlier this year. The Technical subcommittee of the board worked with Dr MacNeil over a period of 6 months to refine the two \$ Indexes that best represent the economic values of our Australian production system. The Australian \$ Indexes combine the individual EPDs of economically relevant traits in a way that is weighted to reflect our Australian production system, costs of production, and payment grids. I would like to thank the Technical Committee, expertly led by Mick Clews for their efforts in creating the indexes. Mick's question-and-answer Zoom meeting with members earlier this year was a highlight, and we look forward to offering more opportunities like this to support education and development for our members.

ASBA is very pleased to have engaged the services of Helical, next-generation software for genetic evaluation. Helical will be accessible to members via Felicity, and is able to both flag parent-offspring mismatches or identify potential parent-offspring pairs based on their genotype information. Helical will store the substantial genotype data ASBA is collecting via members genotyping their cattle, ensuring that we are well prepared to utilise new software and technology to evaluate our cattle. We believe Helical will be a very useful tool for members for parentage verification, and look forward to providing more updates on this software in the new year.

After many years I am happy to announce that ASBA will now recognise fullbloods in their own dedicated herd book. This herd book will be available to members via the CGEN platform. Felicity, and the Board continue to work to provide regular updates to the CGEN software to allow members an efficient and effective service. In 2023, members have been given the option to register their own base cows, transfer cattle, upload images of animals and register your own progeny via this program. We believe CGEN is a user-friendly service, that provides members more autonomy in their cattle business.

Early 2024 will see a formal strategic plan completed. The process of developing the strategic plan will be a significant investment for ASBA, with our aim to provide clear goals and directions for the business for the next 5 years. We look forward to seeking input from our members about the direction of our great breed.

In May 2024, ASBA looks forward to having a display at Beef in Rockhampton and welcoming back several of our international connections to Australia.

I wish to thank Felicity Reeves for her ongoing dedication to our breed. Felicity has continued to work in breed promotion and development in 2023, providing superior service to our members. I would also like to thank my fellow Directors for their tireless work on the ASBA Board. Many voluntary hours are donated by our Board for the development of our breed, and I appreciate the collaboration and dedication of the Board.

I wish everyone all the best for the year ahead, may the seasonal conditions be kind to you all.

EXECUTIVE OFFICER'S REPORT

By Felicity Reeves



Each year we say what a year, and again, what a year. Such change within the management of the breed, performance wise, has been the focus of us being evaluated on a world level.

The chance to be involved in a multi-breed, multi-country evaluation could no longer be ignored. This also brought about a change in herdbook software, with the ability for members to take more control of the registering and transferring live online. In future we're looking to add the ability for members to input their DNA requests online.

We are very proud to have introduced two Australian Indexes based on our production systems, to go along with the new evaluation. Education will be an ongoing priority and we value feedback.

There have been mixed sales results over the year and as usual the weather plays a major part at this time of the year, as we perhaps head into another dry season. The quality of the cattle sold has not waived and breeders must be

congratulated on their decision making to produce what the customer requires.

We plan to target more carcass data into the evaluations and looking to become part of progeny testing that we haven't been able to prior.

As we come off our 50th year, let's build on the public awareness and keep the promotional ball rolling in a variety of ways in all types of media. We are heading to Beef in 2024 for one of them. We welcome international visitors and encourage all exhibitors and members to join us for information sessions.

As this magazine is published, we will have just returned from a trade mission to Canada for Agribition and stud tours in the Calgary/Edmonton areas. We will also be offering another trade mission back to Canada in 2024 for the World Simmental Fleckvieh Congress.

Looking forward to another great year.



FEDERAL COUNCIL



Phillip Partridge

President - Tasmania
0400 636 836
summerhillsimmentals@outlook.com



Peter Wenn

Finance and Policy & Procedures Committees
Treasurer - Victoria
0417 317 830
pinarohills@hotmail.com



Sarah Truran

Sales (Chair), Technical, Finance and
Youth Committees
Senior Vice President - South Australia
0411 955 576
savannahsimbrahs@gmail.com



Stuart Moeck

Technical and Finance Committees
Junior Vice President - New South Wales
0419 465 242
vcsimmentals@yahoo.com



Garry Gillett

Media & Promotions and
Policy & Procedures Committees
Councillor - Victoria
0412 017 660
garryg@aapt.net.au



Bill Cornell

Youth (Chair), Technical Committee
Councillor - New South Wales
0428 293 498
billcornell@bigpond.com



Audrey Weightman

Media & Promotions Committee
Councillor - Western Australia
0428 572 058
topweight@westnet.com.au



Scott York

Technical and Policy & Procedures Committee
Councillor - Queensland
0427 274 410
scyork@bigpond.com



Ashley Ness

Media & Promotions (Chair), Sales Committees
Councillor - South Australia
0437 081 077
timbercreek@skymesh.com.au



Elisabeth Skene

Youth and Media & Promotions Committee
Councillor - Queensland
0428 717 847
meldonpark@optusnet.com.au



Mick Clews

Technical (Chair), Pollicy &
Procedures Committees
Councillor - Western Australia
0418 155 992
mickclews@icloud.com



Office:
<https://simmental.com.au/contacts/>



Federal:
<https://simmental.com.au/federal-council/>



State Branches:
<https://simmental.com.au/state-branches/>

STATE BRANCHES

NEW SOUTH WALES

Simon Hale
President
0438 042 405
simon.hale@bigpond.com

Bill Cornell
Vice President
0428 293 498
billcornell@bigpond.com

Stuart Moeck
Treasurer
0419 465 242
vcsimmentals@yahoo.com

Jenny Bullen
Secretary
0429 231 287
jennyabullen@gmail.com

QUEENSLAND

Elisabeth Skene
President
07 4668 0361
0428 717 847
meldonpark@optusnet.com.au

Marty Rowlands
Vice President
0439 208 732
r_marty@gmail.com

Stephen Lean
Secretary
0418 822 169
stevieglean@hotmail.com

Scott York
Treasurer
0427 274 410
scyork@bigpond.com

SOUTH AUSTRALIA
Tim Cartledge
President
08 8575 5021
0428 830 257
tim@csblacks.com.au

Sarah Truran
Vice President
0411 955 576
savannahsimbrahs@gmail.com

Simmental Office
Secretary/Treasurer
0488 062 287
office@simmental.com.au

VICTORIA

Garry Gillett
President
03 5282 3281
0412 017 660
garryg@aapt.net.au

David Brewer
Vice President
0419 600 527
brewerbeef@gmail.com

Fiona Koch
Secretary
0437 366 899
jarrod@longviewagri.com

Vanessa Wenn
Treasurer
0407 122 881
bunyipblacks@hotmail.com

WESTERN AUSTRALIA

Kevin Hard
President
08 9840 9336
0457 285 256
naracoopastud@westnet.com.au

Peter Cowcher

Vice President
08 9885 6058
0428 169 630
willandra@skymesh.com.au

Jennifer May
Secretary/Treasurer
08 9753 1884
0419 956 667
Daniel.partridge@bigpond.com

TASMANIA

Phillip Partridge
President
0400 636 836
summerhillsimmentals@outlook.com

Scott Frankcombe
Vice President
0408 122 779
anitaandscott@bigpond.com

Chelsea Rayner
Secretary/Treasurer
0447 426 629
kdsimmentals@gmail.com

EKKA BEST BREED... AGAIN!

By Matt Payne

Simmental won the popular vote at the launch of the Norman Hotel's 'best breed' for the second year in a row.

With four breeds blind tasted by the attendees from the industry and local area, when the votes were tallied, we were on top.

The competition is all part of the celebrations around the annual Brisbane Exhibition show, or 'The Ekka' that takes over the city.

Dubbed Brisbane's 'worst vegetarian restaurant', the Norman Hotel is an icon in the Sunshine State's hospitality scene.

The competition each year sees the four breeds go to a public vote as well (this year was Simmental vs Droughtmaster vs



Hereford vs Limousin) and the winner is the featured steak for a month.

Representatives from Simmental Breeders Queensland were on hand for the function and to toast the victory (with a good red, of course!).

GLENANNA SIMMENTALS

MMM



Glenanna Skippy (PP) sold for \$30,000 in the 2023 Queensland Simmental Bull Sale

The Hannah Family
Merrygoen, NSW



Selling bulls and females throughout the year at various sales, follow our social media pages for regular updates!



Glenanna Superstar (PP) sold for \$28,000 in the 2022 Golden Opportunity Sale



Visitors and Enquiries always welcome!

James 0488595992

jmhannah7219@gmail.com



@Glenanna Simmentals

BEEF

QUEENSLAND'S BIGGEST EXPORT

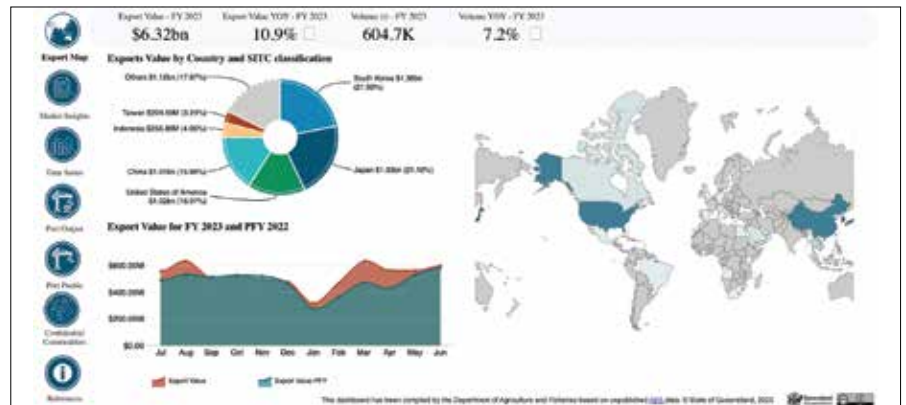
By Matt Payne

Beef/Bovine animals proved to be Queensland's biggest exporter for the 2022-2023 financial year with live cattle exports up a staggering \$148m, an increase of 53.94% YOY, with beef exports up 11.05% to \$6.28 billion, with volume up 7.38% to 598,765 tonnes.

Overall, Queensland exported over \$12.5 billion worth of agriculture and food products in the 2022-23 year, which was 17% greater than the year previous and 25% greater than the average of the five years to that point.

Although Queensland represents 0.1% of the world's population, it provides 0.4% of the world's food supply and nearly 1% of all agricultural exports.

The three biggest export nations in the past year were to China (\$2.7bn), South Korea (\$1.8bn) and Japan (\$1.7bn).



Grant Bulloch
0477 268 935



WWW.GBLIVESTOCK.COM



GB LIVESTOCK LADY MISSILE S108

HARTFIELD STRIKES SUCCESS IN FIRST SYDNEY SHOW

By Matt Payne

The The Hartfield Simmental stud in New South Wales has a stated aim of breeding excellent cattle through all areas of the country, according to founder and owner Anthony Simonetta.

The stud was started in 2020 after purchasing their first female cattle in 2018, consisting of three Simmental females and three Fleckvieh females, some of the originals which remain in the herd. It has rapidly expanded over the last three years, says Anthony.

“We were so happy with how the calves came out that we had to purchase some more. The evolution of our stud has come quickly but not without challenges as everyone faces,” he explained. “We’ve gone from 10 simmental breeders in 2020 to now 80 breeding cows/heifers and 20 retained heifers both purchased and home bred.”

The Sydney show was a breakout for the operation.

“It was amazing to be able to win such a prestigious honour - and to do it at our first Sydney show was even sweeter,” said Anthony. “It was great to finally get amongst the action of the show as we have always wanted to. As well as making many new friends along the way. It goes to show how good

this breed really is and the people amongst it. We really couldn’t have done it without our team behind us.”

Where Anthony wants to take Hartfield is clear:

“The vision we have for the stud is that we want to breed excellent cattle that can do it in all areas of the country. Within stud operations and commercial operations alike. The goal within the breed for us would be to continue growing, and showing how consistent our animals are and eventually having our own on farm sale.”

As with any business, the owner is only as good as the people around him - which is not lost on Anthony:

“At the end of the day you are only as good as the people you surround yourself with and I think we have gotten it right. Hopefully we are able to emulate our Sydney show results again in 2024.”



The Sydney Royal Hartfield Simmental Show Team with Sal.

CHARLIE'S TRIP OF A LIFETIME TO SOUTH AMERICA SOLIDIFIES CAREER PATHWAY

By Matt Payne

Charlie Salter had what he describes as a 'trip of a lifetime' on a Simmental Queensland bursary through Argentina and Brazil, which saw the second year veterinary science student visit some of South America's leading operators across the spectrum of livestock operations.

He was chaperoned throughout the visit by PHIBRO's Senior Director and Global Marketing Manager, Danilo Grandini.

He was able to visit some of the world leaders across feedstock, breeding technology, nutrition and production; gaining a fully rounded experience.

"Between the range of farms we were going to (and the jet lag!), my head just was going the whole two weeks. It was crazy, but it was really cool."

He did find there was significant differences from the way we do things here to there during his trip:

"Both countries are very different between them and in turn - differences to Australia. We saw a lot of research facilities in feedlots, we'd go and look at the cattle in the trial and then talk through the research and the science behind it with their specialists."

Brazil he thought was the closest to Australia:

"Their (Brazil) industry is based around sending your cattle to the feedlot at say, 450 kilos and fattening them over there, however they are into a leaner meat than what we have here, then kill them at 650-700kg, yet Argentina kills at 450kg."

One of the biggest experiences was at the Campanelli Farm in Brazil which has 30,000 head in feeding - all bulls - across a variety of breeds.

Once he finishes his veterinary science studies, Charlie is looking to get involved and specialise in cattle medicine and particularly cattle reproduction.

As for being accompanied by Danilo Grandini, there was equal appreciation.

"We were having dinner one night in Brazil and he offered that once I finished my vet degree he'll potentially help me organise an internship with a reproduction company over there, as it is next level in Brazil."

"I have no words to describe him. He could speak fluent English and have deep meaningful conversations, then do the same in fluent Spanish and Portuguese. And some of the experiences that he shared with us were incredible, he is a truly amazing man."



Charlie with PHIBRO's Danilo Grandini.

Charlie thanked Simmental Queensland and Australia for the bursary, along with Marty Rowlands and Stephen Lean from KBV Simmentals who recommended him for the opportunity. Charlie also offered special mention to his father who went on the trip with him and his mother who helped make the logistics of the whole trip work out.

Having grown up on a feedlot in Dalby with a family that raises both Simmental and Angus; Charlie opened his show experience with KBV; a connection that has been maintained, he is also the President of Queensland's Junior Simmental committee.

Simmental Australia thanks Danilo Grandini and PHIBRO, along with the organisations Charlie was fortunate enough to visit and exchange international experiences: Argentina: Las Chilcas Feedlot, Cabaña la Dominga, Biofarma Research Center, Bustos y Beltran SA (Meat Processing Facility); Brazil: PHIBRO Production Plant, Minerva Foods, PHIBRO Research Farm, Campanelli Farms. You can research each of these organisations and Google will translate to English.



Charlie at the PHIBRO plant.



Charlie's group at La Dominga.

AUSTRALIA JOINS FORCES WITH AMERICAN GENETIC BENCHMARKING PROGRAM

By Matt Payne

Australian Simmental breeders have the opportunity to benchmark genetics of their sires against an international database in a landmark arrangement that has been struck between Australian Simmental Breeders Association and the American Simmental Association.

The American Young Sire Carcass Merit Program (CMP) enters its 26th year in 2024 and Australian breeders have the opportunity to send their sire's semen to take part in the program. It is a program that tracks to the International Genetic Solutions (IGS) index and database. Although Australian breeders have taken part

previously, it is the first time the Federal Association has been able to back it and actively seek participants.

The CMP sees Simmental breeders supply 100 straws of semen from top sires which each straw is randomly mated into 100 commercial cows across co-operative herds in the United States (there are up to 3000 commercial cows across the program). Typically, British cows or Simmental Cross cows are used as the commercial, control cows.

The breeding, calving, feeding and slaughtering of the cattle - and monitoring - are all part of the program. Several elements to the

IGS index are tracked up to the point of slaughter when they are carcass evaluated.

Throughout the period from birth, the CMP tracks elements from each of the progeny of the test sires, such as:

- Birth weights
- Weaning weights
- Yearling weights
- Carcass weight
- Yield
- The (rib) eye muscle area
- Marbling.

“With 100 straws and multiple conditions in which the breeding takes place, it gives a fair average read on the lineage,” explained Australian



Simmental Breeders Association
Federal Councillor, Bill Cornell - who
has formed the relationship for the
Australian Association with the ASA
CMP program.

“The IGS database has 22 million
cattle records collected from around
the world. The CMP program now
has 25 years of progeny test data that
is processed against the IGS indexes,
which gives stronger linkages to sire
lines across the entire database.

“It gives Australian breeders the
opportunity to compare where our
bulls sit against the American genetics
and others from around the world in a
controlled test environment.

“We want to send genetics from bulls
that are already established sires in
Australia so we have information to
go to the CMP and then compare it to
other cattle globally.

“The progeny testing directly of
Australian sires with other sires in
the CMP will create stronger linkage
between Australia and other sires in
the program. The processing of data
in the IGS will increase linkage and
accuracy levels for Australian sires.”

“From the perspective of breeders here
in Australia, it is exciting, as it may
open up many opportunities for us to
forge relationships to sell Australian

genetics to some of the biggest
Simmental producers in the world at
a very high level, rather than the other
way around.

“Typically, the Australian mindset
is an import mindset, where the
American’s is export - hopefully this
may provide an opportunity for that to
change and open the eyes of the world
to the quality of Australian Simmental
breeding.”

The 100 straws have to be landed in
the US before April 1 each year to
enter the program and the cost to the
breeder is \$1500 USD and this covers
the entire program and feedback.

Cornell concedes that the process
required for supply to the program
provides a very short runway for
Australian producers to meet the April
1, 2024 deadline, however breeders
can start planning for April 1, 2025
from now, as he explains.

“It is about a five-to-six month
process of having export qualifications
and semen collected to take part in
the CMP program,” he said. “The
qualification process includes:

- Quarantining the selected
bulls
- Export health test to ensure
they are fit to send to
American health protocols
- Collection of the semen

- Post collection health test
- The actual shipping of the
semen to the USA so it can be
disseminated on the due date.

“We’re working with several breeders
whose bulls may meet the criteria
already with a view to having two
Australian sires in the program next
year, but if there are others who
believe they meet the criteria - and
would like to take part in 2024 - by all
means we would be happy to discuss
the process.

“In reality, we are starting the
conversation now with a view to
Australian breeders making a presence
in 2025.”

This level of real world commercial
benchmarking is the biggest database
in Simmental production globally and
presents an unprecedented opportunity
for the breed in Australia.

Australian Simmental Breeders
Association encourages any breeder
that is interested in the program
to enquire either directly through
Felicity Reeves at the national office -
felicity@simmental.com.au.

Opportunities exist for 2024, but now
is the time to start planning for your
top sires semen to head Stateside in
2025.



HOBBS FAMILY FLOOD

By Stuart & Kylie Hobbs



The Simmental Breed holds a special place in our hearts, as Stu has been involved with Simmentals throughout his entire life while growing up at Tullatoola Simmentals. Our passion for this breed has led us to achieve significant success over the years.

We are a Family owned and operated business with our 3 beautiful Children Isaac, Henry and Sophie.

In 2009, Stu embarked on a six-month working holiday in Canada, which unexpectedly turned into a two-year adventure. Upon returning home in 2011, Stu made the decision to establish our own Black and Red Simmental herd. We acquired embryos from Lewis Farms, which served as the foundation for our herd. These females, who originated from the purchased embryos, continue to thrive in the Hobbs Livestock herd today.

Our journey with Simmentals has been marked by remarkable accomplishments, both in the show ring and the sale ring. We take immense pride in our achievements and remain dedicated to the breed's continued success.

On 14th November 2022 our Beautiful little town of Molong experienced one of the worst floods in the towns history with rain starting at 3:30pm which at the time was gentle steady rain but as the night went on the rain got so heavy it sounded like the roof was going to collapse.

At 2:30am Stu woke up to the sound of water roaring he went out and drove down to our creek and it was

the highest we've ever seen it straight away he came back to the house and said to Kylie if that creek is like that Molong will be flooding.

After that the videos and pictures were coming up on Facebook from people in town.

The devastation the next morning was horrific it looked like a war zone with people stranded on the roofs of their homes and the power of the water was just destroyed everything in its path with every business in the Main Street being wiped out.

The community spirit was incredible with everyone just getting in and helping with the clean up.

There were lots of go fund me pages started but it just didn't seem enough so it was at that time Stu said to Kylie, I'm going to do something to help so he made some phone calls and spoke with Auctionsplus about it and created the Molong Floods Charity Auction to raise funds for those affected.

From a few phone calls asking for donations it wasn't long before the word got out as it does pretty quick in the beef industry to people calling us offering donations it was just incredible and we ended up with 34 lots in the Auction.

Hobbs Livestock donated Semen packages and embryo packages.

The Auction ended up raising an unbelievable \$143,000.

We believe in providing opportunities for the youth to learn and grow within the Simmental breed and the beef industry as a whole. By involving them in various activities such as junior shows, educational programs, and leadership development initiatives, we aim to instill a sense of passion, responsibility, and dedication in the next generation.

We understand the importance of mentorship and guidance for young breeders. Therefore, we are always

willing to share our knowledge and experiences with them, helping them develop their skills in breeding, showing, and herd management. We also encourage them to actively participate in breed association programs and events, fostering a sense of camaraderie and community among young breeders.

Our own children have experienced the joy and fulfillment that comes from working with Simmental cattle, and we are committed to fostering that same passion and love for the breed in the youth we work with. We firmly believe that investing in the future of our breed through our youth is not only beneficial for them but also essential for the long-term sustainability and growth of the Simmental breed and the beef industry as a whole.

We firmly believe that collaboration and working together with other breeders is essential for the progress and advancement of the Simmental breed. By sharing knowledge, expertise, and resources, we can collectively make a significant impact in taking this breed forward.

We are always open to partnering with like-minded breeders who share our passion and vision for the Simmental breed. Whether it's through joint breeding programs, exchange of genetics, or participating in breed improvement initiatives, we are eager to collaborate and contribute to the breed's growth.

Furthermore, we actively participate in industry events, seminars, and conferences to stay updated on the latest advancements in Simmental genetics and breeding techniques. This enables us to continually enhance our knowledge and skills, and in turn, share this valuable information with fellow breeders.

We firmly believe that by working together, we can collectively elevate the Simmental breed to new heights. We are excited about the future of this exceptional breed and the opportunities it presents for collaboration and advancement.



HOW THE BREED HAS CHANGED AND IS ADAPTING - FROM THE EYES OF A SCANNER

By Matt Payne

We caught up with Roger Evans - a renowned cattle scanner who primarily scans cattle in New South Wales and Tasmania to discuss how Simmentals have changed over the years from a scanner's perspective.

"When I first started in the industry, we had the traditional Simmental where the aim was for plenty of growth for age high yielding," said Roger. "It really lend itself to those high yielding markets and terminal size situations. As time has gone on with the development of the breed, which has been into straight red, red or straight black, you can see a slight change in the maturity patterns.

"This is probably towards a bit more of a medium maturity pattern with some, but not a lot. The biggest thing that I've seen is they've been able to increase the subcutaneous fat levels, increase IMF levels without losing too much yield with the cattle.

"Breeders are still maintaining that ability to be used terminal, but also increasing some options in terms of being able to feed for some markets with a bit more IMF and maybe a little bit in some cases that focus on an earlier grass finish or short term growth programs."

Evans believes that Simmentals have become more adaptable for different

markets through the maturity pattern.

"They've (breeders) sort of taken away that cattle that were really high performance but with that actually had associated a little bit extra burst just due to that higher performance," he explains. "They've really looked to calving ease and maintain the fertility factors such as straddle with milking ability, but if they've really changed that maturity pattern to more of a medium maturity pattern and have been looking at a few more things like hair type and skin type and along those sort of lines."

One thing Roger has noticed is that in adjusting the cattle for usefulness, the structure of the Simmentals in Australia hasn't appreciably changed.

"They haven't let structure go on most of the cattle. It's a bit like in every breed you've got to get some variation in terms of what you see structurally. But as a whole, the breeds really kept that structural integrity and kept the basics of what European breeds are for, however the maturity pattern has changed a little bit. So basically the aim is to maintain the yield, maintain the functionality of those cattle, but in turn, just change the carcass composition a little bit."

Roger believes one of the big changes to the breed in the future will come from the additional gathering of

genetics information, which would seem to be one of the biggest innovations in breeding at the moment.

"I can see as time goes on there's starting to become more producer awareness of genetics information," he said.

"There's a bit of a challenging time at the moment where with the introduction of an alternative to pre plan through IGS, it's a little bit of, you've got two different generic evaluations, but that in turn, you've got a greater awareness and adoption of those evaluation within the Simmental breed as a whole."

The additional data has a two fold benefit to Simmental breeders.

"Once you start recording something it's pretty easy to work out a) what you've got and then b) where you need to go to get to the end point of your production system.

"So whether that is selling and producing bulls further north, or selling bulls through say grass finished down in more temperate areas in Southern Australia, it will be where you find your end point through that data."



KNOX FARMS
TRADITIONAL SIMMENTAL CATTLE
BREEDERS

Jeff and Robbie Knox

0414 611 414

“Kokomo”

211 Roslyn Road
Crookwell NSW 2583

**Suppliers of Internationally
Sourced Homozygous Polled
Fullblood Simmental Genetics**

- **Females and Bulls**
- **Semen**
- **Embryos**

Country of Origin of our genetics that are exclusively owned by us are from:

- Denmark/Sweden
- Germany
- Czech Republic
- United Kingdom
- Ireland
- Canada
- USA

Genetics are for sale by private treaty and inspection of livestock by appointment.

Please phone to discuss.



Admiral Pp



Coach PP



Czech Bull 13 months PP



Manhattan PP

KNOX FARMS are Life Members of Simmentaler Cattle Breeders Society of South Africa first registered in 1964 as a Fullblood Society

NSW OVERVIEW FROM SECRETARY - JENNY BULLEN

We love our cattle, work hard to breed that ultimate bull, prepare them for the ultimate sale or aim to win the ultimate ribbon. We are all engrossed in talking about “that cow” or the next best thing in genetics and chasing the ultimate figures. It’s never hard to pick the cattle enthusiast at any party, but it isn’t all about the cattle.

I’d like to take the time to showcase some of our incredible young people who are not only making huge steps within the Simmental industry but are giving back to the next generation of agricultural leaders and their own local communities.

With a slow recovery from COVID and extreme weather conditions it is impressive to follow what these young people have achieved in 2023. In the few years I have been involved with Simmental Breed I have met some incredible young achievers, educators, and mentors. I am sure there are many more out there yet to meet, admire and share their stories. Congratulations to our young generation for leading the way. Enjoy reading and learning a little about their journeys.

Cheers
Jenny Bullen

CHANCE CANADIAN JOURNEY STEERS GRANT BULLOCH’S PATH

By Matt Payne



GB Livestock Junior Show Exchange Winner, Ollie Mendham with Grant Bulloch of GB Livestock.

Grant Bulloch’s life has been a journey deeply intertwined with the agricultural industry. Growing up in Wingham, New South Wales, he grew up actively participating in his family’s crossbreeding cattle operation.

At the age of 14, Grant’s family decided to move to Braidwood, New South Wales (near Goulburn). It was here the family assumed the responsibility of managing ‘Milton District Family Meats.’ Grant’s grandfather, Bill Smith, established the family’s position in this venture.

Grant’s passion for cattle extended beyond breeding to showing. Having started at the age of eight in 2004, in 2006 his pathway was set when he participated in his first Junior Heifer show with the Charolais breed, showing one of Tyson Wills’ heifers. This led to Grant and his parents attending as many Heifer shows as possible around Australia. Grant learnt many skills across showing cattle like parading, judging and fitting - which led to life skills like patience, attention to detail, responsibility, sportsmanship - and also allowed him to network among the best operators in the industry.

After school, he went into training as a mechanic, however the passion for cattle wouldn’t go away and a brief trip to Canada saw it turn into a seven year journey - which saw

BARANA SIMMENTALS

"Breeding Cattle for the Commercially Minded since 1980"



24TH ANNUAL ON PROPERTY BULL SALE

Friday 5th July 2024 at 1pm

40 BULLS | Traditional Simmental
15 BULLS | Angus
10 FEMALES | Specially Selected

All bulls semen tested including
morphology & vaccinated;

- 7 in 1 • Pestigard • 3-day sickness
- Tick Fever (3 germ blood) • Vibrio



Davidson Cameron & Co.
A MEMBER OF THE ELDELS GROUP

Sale will be held on-farm and livestreamed via AuctionsPlus

Peter Cook | 0427 775 233

www.baranasimmentals.com | Follow us on social media for updates

him wind up as becoming an integral part of the Lewis Farms family in Spruce Grove. Lewis Farms specialised in raising high quality purebred Simmental and Angus, along with potato farming. Through this experience, Grant absorbed a wealth of knowledge in cattle breeding and genetics, gaining expertise in the intricacies of raising Purebred cattle and exposed him to practical insights into sustainable and efficient farming practices - which he's been able to apply to his own production of purebred Black Simmentals in Australia.

Grant established GB Livestock upon his return in 2021 with the vision to breed Black Simmental cattle of unparalleled quality, focused on precision, diligence and commitment to maintaining strict fertility traits and high carcass qualities. He helped his family implement a recip program where they put seedstock embryos in their crossbreeding animals for seedstock breeders around Australia.

One of the most fulfilling achievements in Grant's career has been the establishment of 'The GB Livestock Junior Show Exchange' in collaboration with the National All Breeds Junior Heifer Show. It offers an opportunity for a Junior participate in the prestigious Summer Synergy event in Canada. Grant's goal is to provide someone with the same opportunity he founded in Canada.

In 2023, Ollie Mendham was the inaugural winner of this prestigious honour. He caught Grant's attention through his remarkable willingness to learn and attention to detail. Ollie's qualities and enthusiasm for cattle showing reminded Grant of his own youthful zeal and dedication at a similar age.

Looking ahead, Grant Bulloch remains determined in his commitment to three core priorities: the continuous improvement of high-quality Simmental genetics; the successful management of the family business - and giving back to the junior movement in Australia. His passion for breeding exceptional cattle and his dedication to running a thriving family enterprise are at the heart of his agricultural journey.

While he has his own ambitions, Grant wants to leave a legacy and provide opportunities that will make a lasting impact on the next generation in cattle farming and showing. Grant exemplifies innovation, mentorship, and embodying the principles of progress and community to foster the future generation of agricultural enthusiasts, the pillars that have defined his exceptional career.



Simmental
AUSTRALIA
SIMMENTAL NSW

SIMMENTAL NSW STATE BRANCH

2024 SYDNEY ROYAL PUREBRED STEER SHOW

**Must be sired by a Purebred bull registered
with Simmental Australia.**

- ✓ \$10,000 Cash Prize awarded to the Exhibit, sired by a Purebred bull registered with Simmental Australia, winning Grand Champion Steer.
- ✓ \$10,000 Cash Prize awarded to the Exhibit, sired by a Purebred bull registered with Simmental Australia, winning Grand Champion Carcase.

*This prize will “**JACKPOT**”
by \$5,000.00 per year if not won!*

CONTACT

Simmental NSW State Branch President

SIMON HALE 0438 042 405

TENNYSONVALE



ILLABO NSW



40 FEMALES - 30 BULLS
SALE - 1PM FRIDAY 31 MAY 2024

Nathan 0450 473 109 - Carl 0405 848 224 - Ian 0427 931 943

PERFORMANCE, PROFITABILITY & LONGEVITY

FROM FULL BLOOD GERMAN SIMMENTALS WITH SCOTTISH MONIKERS TO MAINTAINING A GENETIC CRADLE

By Jacinta Cummins

Simmentals' early days in Australia

Despite the use of “Scottish” in the sires’ names, the first Simmental genetics imported into Australia came from full blood German Simmental cattle; the use of “Scottish” in the names of bulls like Scottish Herod and Scottish Neff was a public relations move to combat anti-German sentiment following World War II.

Sharon Jordan and husband Chris run Ten-Rose Simmentals at Longwarry in Victoria and Sharon has a keen interest in recording the history of Simmentals in Australia.

According to Sharon, it’s difficult to determine who the very first person to bring Simmentals into the country was.

“There are two studs who claim their family imported the first Simmental genetics and there’s also the story that a Queensland breeder with a very low profile was the first person to bring them in,” she explained.

Many of the first studs were established by breeders who had existing studs for other breeds.

Some of these people continued to run both studs concurrently, while others focused on Simmentals alone as they had increasing success with the breed. “You need less of it to be satisfied because it’s such high quality.”

High profile breeders who put Simmental in the spotlight

When Simmentals came to Australia in 1972, it was a different world to today.

The only advertising was print, radio and television.

But in a time before Instagram and TikTok and influencers and brand ambassadors, Simmental was often in the public eye because of an unintentional and organic marketing campaign in the form of high profile people who embraced the breed.

The most controversial of these was celebrity agent and music producer Harry M Miller.

While he is remembered for bringing the Rolling Stones and the Beach Boys to Australia and discovering Marcia Hines, he was just as instrumental in establishing Simmentals in Australia as he was in bringing top entertainers to the country.

Unable to import cattle or genetic materials directly into Australia, Mr Miller first bought German Simmentals and exported them to New Zealand.

The heifers were collected in embryo transplant there before being imported to Australia.

By the mid 1970s, Mr Miller and his then wife, Wendy Paul, were showing Dunmore Simmentals in three states with their bull, Dunmore London Times, winning Supreme Champion at Rockhampton Beef Week [the inaugural event now known as Beef Australia] in 1988.

The Dunmore stud near Manilla in NSW contributed to bloodlines found in Simmental studs across Australia today.

Sharon recalled a conversation where Mr Miller told her about organising a Dunmore sale while he was serving a prison sentence for fraud after the collapse of his ticketing company, Computicket, in the 1970s.

“He told me that he just printed the catalogues out on the government printers at the gaol; he was the [company] director so it was up to him to organise the sale no matter where he was!” she said with a laugh.

“I think he got a kick out of using the government printers for them.”

Malcolm Fraser also hopped on the Simmental bandwagon when he was the Prime Minister of Australia and kept on breeding long after his retirement from politics.

Unfortunately the old saying “All publicity is good publicity” didn’t prove true for Mr Fraser when one of his Simmental bulls, Mountbatten, escaped the ring and trampled South Australian couple, Christopher and Glenys Tippet, at the 17th Fraser Nareen Simmental and Hereford sale in 1994.

Rumours that Mr Fraser had ordered the top rail of the bull ring be taken down so the bulls looked bigger spread like wildfire, but he denied this and maintained the rampage was a freak accident.

A bigger Mountbatten did nothing to help Mr Fraser’s case when he broke out of the Hamilton Saleyards just three years later, but at least there no significant injuries this time.

But South Australia’s Supreme Court found against the Fraser family and ordered them to pay more than half a million dollars restitution to the Tippetts as part of a damages action they filed against the family.





Harry M Miller at Dunmore.
PHOTO: Supplied Sharon Jordan

World Champion Formula One champion Alan Jones was another celebrity who turned to Simmentals as he looked to take things down a gear, but some sceptics suggest this was more of a tax dodge than a true passion for the land.

While his foray into Simmental was relatively short lived, one of his greatest achievements was employing Mel and Gina Ryan to run his Miraleste [Simmental] stud and farm.

The Ryans went on to establish Glenview Del Simmentals in Glenburn with Gina still putting on an extensive display of Simmental photos and information for Victorian Beef Week each year.

Mainstays of industry

Celebrities may have put Simmentals in the spotlight initially, but it was many, lesser known [at the time] producers who first achieved the consistent, long term success which caused the broader cattle industry to take note of Simmentals.

Family names like Baker, Cowcher and Hopkins spring to mind when success and Simmental are used in the same sentence.

Sharon credits Dr Peter Trevan with assembling some of the best Simmental genetics in his Hazel Dell Simmental stud [Now operated by Scott Andersen.] and said that money

nor distance were rarely obstacles in his pursuit for the best cattle.

Another breeder who not only bred excellent cattle but held many leadership roles within Simmental organisations was Dick Vincent.

He established Hamelin Park stud at Williams in Western Australia and served as president of both the Western Australian Simmental Council and the Australian Simmental Breeders Association Federal Council during his multiple terms with both bodies.

He was President of the World Simmental Federation for three of his 12 year tenure.

But it wasn't all men.

Women like Jan Gray [Piggot Range], Shirley Barker [Bokara] and Gina Ryan [Glen View Del] emerged as Simmental pioneers from the breed's early days.

According to Sharon, Gina and her late husband Mel not only set an example with how they bred and showed their stock, but encouraged everyone involved in the industry.

"They were just so positive, if you had a problem and you spoke to Mel about it, you usually came away with a way to try and solve it and you felt a lot better about it," she said.

Gina's service to Simmentals was recognised with Simmental Australia Life Membership in 2019.



Harry M Miller with Graham Kennedy and Bert Newton at Dunmore.
PHOTO: Supplied Sharon Jordan



Malcolm Fraser with Harry M Miller at Simmental House.
PHOTO: Supplied Sharon Jordan

Continued next page

FROM FULL BLOOD GERMAN SIMMENTALS WITH SCOTTISH MONIKERS TO MAINTAINING A GENETIC CRADLE continued

Significant Simmental Sires and Dams

Any animal is only as good as its parents and there were a number of prolific animals which formed the base of the best Simmental genetics in Australia today.

While it's impossible to single out just one bull or cow as the best of the best, Sharon can rattle off a list of sires and dams whose progeny have consistently performed at an elite standard.

Here are some of her top picks:

- As the first Simmental semen in Australia, Scottish Herod was known for his softness and moderation.
- One of his contemporaries, Scottish Neff, produced quality offspring for several generations and is responsible for 2407 progeny.
- Alan Jones paid more than \$30,000 (Nearly \$136,000 in 2021 due to inflation.) for Piggott Range Poll Douglas bred by Jan Gray in 1980, making him the top selling Simmental bull at that time.
- Dr Billy and Loretta Wilson's Bass River Campaspie won

Interbreed Champion at Melbourne Royal Show in 1986.

- Bokara Denise D60, sired by Bokara Wotan out of Bokara Denise 101, was the start of an outstanding line of animals with breeder Dr Shirley Barker, Bokara, saying her offspring are still among the top performing of her herd.

Current trends

As with anything you can't live in the past, if you want to consistently be at the top of the market.

Since Simmental first came to Australia, Red Simmentals, Black Simmentals, SimAngus and Simbrah have emerged as alternatives to Traditional Simmies.

Sharon has noticed a shift away from the huge, Frame 12 animals favoured by early importers and producer to a more moderate sized Simmental.

"The people who are staying in the industry and newcomers to it want soft, easy doing cattle which are closer to a Frame 6, maybe a Frame 7," she said.

"They are looking for cattle which are going to perform and provide easy calving."

With a strong demand for black cattle, some leading Australian studs started breeding Black Simmentals after the Americans bred them during the 1990s and are running them alongside their Simmentals that they've run for decades.

While some purists rail against anything that's not traditional, producers and livestock agents argue harnessing the Simmental genetics in other breeds of Simmentals has introduced the Simmental advantage to more markets which wouldn't have considered the breed a viable alternative previously as the Traditional Simmental didn't suit their region.

This has been proven by many Queensland graziers moving away from purebred commercial herds to crossbreeding operations with Sharon saying the Simmentals can improve all breeds.

"Queensland likes the Simmentals because the Brahman and the Santas are tough with their muscle and they are a hard steak to cut into so the Simmental counteracts this by adding tenderness and milk," she explained.



Gina Ryan with Glen View Del Tilly after she won Grand Champion Heifer at the Melbourne Show in 2000. Glenview Dell Tilly also won at Adelaide and Canberra Shows; she was unbeaten in the showing. PHOTO: Supplied Gina Ryan



Mel and Gina Ryan who established Glen View Del Simmental gave generously of their time and expertise to everyone who sought help, advice or encouragement. PHOTO: Supplied Gina Ryan

These operators, largely based in Central and Western Queensland, are looking for a good structured lighter Simmental with a short coat to avoid tick issues.

The Simmentals' moderate calving size reduces management, which is important given the vast size of many of their properties, but the progeny grow quickly once on the ground.

The graziers have also found Simmentals have a high heat tolerance so they maintain condition in the hottest parts of the summer better than other breeds.

This increased demand for Simmentals in Queensland saw crowd with many repeat buyers attend the second Queensland Simmental Bull Sale in July.

With a 99 percent clearance rate, an average price of \$12,515 and a top price of \$34,000 the figures were a strong increase on the 2021 average price \$12,207 and sale top of \$22,000

Technology and data is increasingly important to Simmentals' continuing success.

Simmental is just one of many breeds which has been investigating the benefits and disadvantages of the Australian developed BreedPlan national performance recording system in comparison to those of the International Genetic Solutions' (IGS) herd recording in 2022.

Bonnydale Black Simmentals genomically profiled its entire stud herd using International Genetics Solutions (IGS) in 2018.

It was the first seedstock operation in Australia to provide genomically enhanced expected progeny differences (EPDs) to potential buyers at its sale in February, 2018.

But Sharon notes there are limitations to most testing and comparison management systems.

"Each has their limitations and some will be skewed depending on the animal - the Black Simmental often has better EBVs coming from the Black Angus, so it's not really comparing like and like," she said.

"I fear it's hard to get a truly accurate result from an interbreed system, raw data is what is the most important."

She believes Queensland grazier and paralympian Ashley Adams was ahead his time with his mass scale data recording and use of it to guide management decisions and breed cattle for his TendaBeef line.

Simmentals next 50 years in Australia

As the Simmental continues in Australia, the breed's outlook is bright with a strong demand for it in both crossbreeding and purebred operations and a new wave of breeders coming into their own.

Sharon identified Ruby Canning [Mavstar Simmentals and Mavstar Photography] as just one of Simmental's emerging leaders alongside others like Brodhi Carracher of Grangeburn Simmentals.

Despite the appetite for American and Canadian genetics, Sharon said Australia needs to remember its genetics are already some of the best in the world.

"I think we have a very good genetic base already, so we need to make sure we protect them.

"While Simmentals come in different types and crosses, it's important to maintain the genetic cradle with a good supply of those original, pure Traditional Simmental genetics so we can always go back to them.

"I just see Simmentals continuing to evolve in Australia, breeders are pretty positive and there are a lot of bigger breeders with impact who are really pushing the breed forward and other people are watching this as it unfolds."



Gina Ryan presents a comprehensive Simmental display at Victorian Beef Week each year.
PHOTO: Supplied Sharon Jordan



Simmentals at Glenburn who asked for their Ryan



Ten-Rose Directors Chris and Sharon Jordan pictured with Baw Baw Shire CEO Peter Kulich, Baw Baw Shire Mayor Debbie Brown, State Member for Narracan Gary Blackwood and Federal Member for Monash Russell Broadbent ahead of the Export Governor Awards. The cattle are females sired by Harry M Miller's Dunmore Hawkeye II PHOTO: Supplied Sharon Jordan

GAINS WITH SIMMENTAL GREAVES' CROSS PACKS ON THE KILOS

By Matt Sherrington, QCL journalist

The Greaves family has enjoyed consistently rapid growth in the calves produced in their crossbreeding program for 15 years due to the influence of Simmental genetics.

Simon and Megan Greaves run the business with their son Josh, on 344ha in Leongatha, in the South Gippsland region of Victoria, which they purchased 20 years. They also lease an additional 61ha nearby.

The Greaves' first became interested in the Simmental after seeing how they were performing on their neighbours' property, 15 years ago.

"We then went to the Naracoorte Saleyards and bought Simmental cattle there," Mr Greaves said.

"Our area in Gippsland is 95 per cent Angus territory, whereas Naracoorte is the opposite with many producers successfully utilising Simmental, generally with Woonallee genetics."

"I suggest, to people in our region, to go and visit Tom and Liz Baker at Millicent to see firsthand how good their cattle are and how they run their operation."

The Greaves join their traditional Simmental bulls over Angus, Red Angus, Hereford, and Black Baldie cows.

"Through this program, we're consistently getting our calves to 550 to 600kg at 20 to 21 months-old.

"The rapid growth that the Simmental provides in our crossbreeding program works for us, we're getting great results."

While the Greaves predominantly focus on a spring calving they also factor in a second calving window for Autumn.

"They'll be starting to calve at the end of August.

"We usually run 800 to 1000 beef cattle in total, plus our dairy herd. We calve down about 450 cows all up.

"We buy cows in and all of our Simmental-cross steers and heifers are sold.

"The heifers are just as good a the steers in relation to how quickly they gain weight. All calves are sold into the domestic market."

The Greaves source their Simmental bulls from Stuart and Kylie Hobbs, Hobbs Livestock, in Garra, New South Wales; John Leek, Mt Ararat Simmentals, Nar Nar Goon, Vic, whose stud program is strongly Woonallee-influenced, and is situated close by the Greaves' property; and Bernie Evans, Strevan Park Simmentals, Oxley Flats, Vic.

"We bought a bull from Bernie a month ago, which I consider to be our

best purchase yet. He has great growth and the fat cover of a British-breed bull, which is what we always strive for when buying our Simmental bulls.

"It has taken a while to master the exact type of bull required to put over an exact type of cow."

They've also sourced terminal cattle from Tasmanian producers Phillip Partridge, Summerhill Simmental, Scottsdale, and the Damen family, Kindred Organics, Kindred.

"These cattle are used for fattening purposes."

A butcher by trade for 35 years, Mr Greaves strongly believes producers should be rewarded for high meat yield.

Suppliers of carcase meat to the domestic and export sheep meat markets are beginning to offer higher premiums for saleable meat from each carcase and I think the beef cattle industry should be following this.

"Eye muscle area scans would be of great benefit to producers as they could then refocus their programs to produce more meat and less waste."



The Greaves join their traditional Simmental bulls over Angus, Red Angus, Hereford, and Black Baldie cows.
Picture supplied



The Greaves' first became interested in the Simmental 15 years ago. Picture supplied

“As a butcher, I could cut a carcass and chuck out up to 50kg of waste.

“Eye muscle area scans would be of great benefit to producers as they could then refocus their programs to produce more meat and less waste.”

Mr Greaves said they're accustomed to high rainfall, which allows for high stocking rates on their flat to steep undulating country which can all be traversed by tractor, though this season the wet hasn't been a consistent.

“The rain has still been good, but it's down on what we're used to receiving. We just had two rainwater tanks run dry, which is the first time that has happened since we've bought the land.

“We aren't panicking yet, as the cattle are still in good shape, but rain through October and November will be needed.”



Through their Simmental crossbreeding program, the Greaves' consistently get calves to 550 to 600kg at 20 to 21 months-old. Picture supplied

SIMMENTAL-ANGUS CROSS WINS ON HOOK ADELAIDE ROYAL SHOW LED STEER CONTEST

By Elizabeth Anderson, Stock Journal

The exhibitors of a Simmental-Angus steer were “euphoric” after it was named grand champion steer on hook in the Royal Adelaide Show led steers competition.

LCS Timmy T055, a crossbred export weight steer, shown by Lancaster Simmentals, Field, was announced the winner at an evening awards ceremony.

Prue Cartledge, Lancaster, said the family, made up of Henry, Tim, Lise, Lizzy, Harry and Duncan, had been entering the competition for the past eight years, including winning an eating quality competition in 2021, but this was their biggest prize.

“Our kids love entering the steers in the competition, and they take them to the (SA Junior) Heifer Competition in July,” she said.

“We figured, we’d done all that work so we might as well go on to enter the steer competition.”

She said the steers were a passion project for the family.

“It’s what they love, it’s what gets them out of bed in the morning,” she said.

The Black Simmental-Angus steer, which had a liveweight of 614 kilograms, and scanned an eye muscle area of 117 centimetres squared, P8 fat of 13 millimetres and rib fat of 12mm, scored 88.01 points - out of a possible 100 - in the carcase component.

It had a hot carcase weight of 345.4kg, a lean meat yield of 16.95 out of 20, a marbling score of 590, a Meat Standards Australia index of 65.70 and MSA score of 41.06 out of 50, as well



Jack Thomas, Thomas Foods International, with Lancaster Simmentals' Lizzy and Prue Cartledge, who exhibited the grand champion steer on-hook.

as a marketing specifications score of 30 out of 30.

Ms Cartledge said they use genomic testing for all their cattle, using that information, along with Expected Progeny Differences, to select good quality cattle, before using visual assessments to select their team.

This year, they entered three steers of their own, as well as supplying one to Unity College, all in the crossbred export 593kg to 706kg class, picking up a fifth place on-hoof.

Champion purebred steer on hook went to Glental Simmentals, Mallala, which was also the grand champion on-hook winner - with a different steer.

The on-hook winner, St Paul T483, a Simmental, was also the reserve champion lightweight domestic steer on-hoof, but won champion heavy domestic steer on-hook.

The steer had a liveweight of 437kg, 100EMA, and 9mm rib and P8 fat, and a hot carcaseweight of 259kg.

It had a MSA index of 63.06, an MSA score of 39.41 out of 50, a marketing specifications score of 27 out of 30, a lean meat yield of 20 out of 20 and a total score of 86.41 out of 100.

Champion purebred light domestic steer on hook went to Urrbrae Agricultural High School for Murray Grey steer Arki Timon, supplied by Arki Murray Greys.

It had a hot carcaseweight of 245.6kg, an MSA index of 64.19, an MSA score of 40.12, a market specification score of 30, a lean meat yield total of 14.36 and an overall score of 84.48.

Reserve champion purebred light domestic steer on hook was L&M Llewellyn & Co, Keith, with an overall score of 82.48.

Champion purebred heavy domestic on hook was St Paul T483, with reserve going to Venturon Tommy, a Charolais from Venturon Livestock, Boyup Brook, WA, which had a total score of 86.30.

MYPONGA SIBLINGS MAKE ROYAL ADELAIDE SHOW DEBUT

By Vanessa Binks, Stock Journal

Two young sisters took a liking to showing cattle a few years ago and have not looked back since.

Myponga siblings Jazmine and Charlotte Whittlesea hit the cattle showing a few years ago parading other studs cattle but this year, entered the ring with their own heifers.

Last year, they started Charlomite Simmentals to help increase their parading presence on the show circuit.

“We wanted to show more cattle but we did not have any stud animals, so we thought it was the right time to give it a go and start our own stud,” Jazmine said.

They broke in four heifers to show for the first time in the Simmental judging at the Royal Adelaide Show and came home with three class placings, a first, third and fourth.

“We were really proud to be showing in Adelaide and next year, we will be more used to showing our own animals,” Jazmine said.

Jazmine’s first ever experience in showing cattle was at the SA Junior

Heifer Expo a few years ago and since then, she returns each year to compete.

“I really enjoy the heifer show,” she said.

Charlotte learned the ropes of showing cattle from her sister and was lucky enough to be a part of a school show at Myponga when the Adelaide show was cancelled.

“I became interested in showing through my sister and then I was asked to be a novice handler at my school for a small show and I really liked it,” Charlotte said.

“I have attended a couple of SA Heifer Expos and it really grew from there.”

Charlotte also said it was a “bit stressful” showing their own cattle.

“There was a bull ahead of me which got off its lead just before I had to lead my heifer in - I was not expecting it and I was trying to get into the ring in time for my class,” she said.

Moving forward, there are no major plans to increase the stud size in the short term. “We want to keep it smaller but we would like to eventually sell some bulls,” Charlotte said.



Charlotte, 14, and Jazmine, 17, Whittlesea, Myponga, are eager to keep showing cattle after starting their own stud. Picture by Vanessa Binks

Simmental-Angus Cross article continued.

Champion purebred export steer on hook was Glental Brentvale Im Thunderstuck, a Limousin from Glental Partnership.

It had a hot carcaseweight of 309.4kg, an MSA Index of 62.56, an MSA total of 39.1, a market specification totla of 10, and lean meat yield of 15.98 and a total score of 85.08.

Reserve went to Simmental Woonallee Trick or Treat, from Tom and Lizzy Baker, Furner, with 83.76 points.

In the crossbred competition, champion light domestic steer on-hook went to L&M Llewellyn for Red Angus-Simmental Jillangolo Thunderstruck, with a hot

carcaseweight of 230.3, a 63.39 MSA index, a 40.24 MSA total, a marketing score of 20, a lean meat yield of 14.17 and a totla socre of 84.42.

Reserve went to Redwood Range Capellini, bred by Redwood Range and exhibited by Balaklava High School, with a 65.73 score.

Champion crossbred heavy domestic steer on-hook was Mount Compass Area School with Arabar Kenny, an Angus-Limousin from Duane Wilson.

It had a HSCW of 283.8, MSA index of 64.49, MSA total of 40.31, market specification score of 29, LMY of 13.54 and total score of 82.85.

Reserve champion was also from Urrbrae, an Angus-Simmental from Cliff Farm Cherry Macklin, named Tanner, which scored 79.17.

Champion crossbred steer on hook was LCS Timmy T055, with the reserve going to LA Train Wreck, LA Livestock, Keith

The Simmental-Angus, which had a total score of 79.19, was also the reserve champion crossbred heavy domestic steer on-hoof.

The most successful steer exhibitor was Spence’s Show Steers, Keith.

SIMMENTALS HAVE OPPORTUNITY TO DOMINATE - GLENTAL PARTNERSHIP

By Matt Payne

South Australia's Glental Partnership has been on an incredible run of form over recent years at the major shows both on hook and hoof, particularly this year at the Royal Adelaide Show where it was the Champion for the Reserve Light Weight division on hoof; the Heavy Domestic division carcass and Grand Champion Purebred on carcass as well.

This added to Grand Champion on hoof award in Melbourne and victories in purebred categories in Adelaide since 2017. Glental pure breeds black Simmentals only on their (collective) 320 acre properties in Mallala. The cattle share the property with sheep. Although cattle is the passion for Glental Partnerships owners,

the Bruggemann family, they are producing 3-5000 lambs per year.

Leading the Glental Partnership now is Lewis Bruggemann who grew up with the family in farming. He's spent time in various places around Australia including with Elders in New South Wales and Port Augusta, being a sheep agent and showing cattle at shows. In addition to running the Partnership, he also works for Thomas Foods which, this year, opened the replacement meat processing plant in Murray Bridge.

According to Bruggemann, it is no mistake the show results over recent years have come the way of Glental Partnership through hard work and ensuring their breeding gets the 'recipe' right.

"I believe the recipe is now there to get it right with these cattle and from a carcass point of view, our breed of black Simmental is exceptional," Lewis said.

"There's a certain type that we've managed to breed in these cattle that's ideal for the steer showing. We have bred them to a very European base, however have managed to breed a bit of eating quality into these cattle," he added. "So I think as opposed to some other European bred cattle that are high MA and minimal fat, we've managed to get some durability and some cover on these carcasses with a bit of intramuscular fat."

Bruggemann explained that eating quality is key to building a champion and that is something they have focused on.



“To win a champion, you really need to have some eating quality and that’s what we have been able to achieve with a few of these steers.

“So that’s our third champion purebred at Adelaide in the last six years this year.

“We’ve done this through moderating birth weight and cow size to put a bit of functionality into these cattle,” Lewis said. “I think there’s a lot of potential (for Simmentals) and they’ll continue to have a place in the market going forward.”

Lewis added that the breed is coming into its own and personally believes it has a chance of dominating at the shows in the years to come.

“I think it is an exciting time for the Simmental breed,” Lewis concluded. “We’ve got the potential to do well at the shows on both hoof and hook. The Limousins have probably been dominant for the last 10 years, I just think there is potential in the Simmentals at the moment and we are having success against the Limousins at the big shows.”



Producing powerful, maternal females, heroes of the herd.



LOGIE SIMMENTALS



**Graham & Jenny Bullen | Logie Simmentals | Nowendoc NSW 2354
P: 0429 231 287 | E: jennyabullen@gmail.com | Facebook Logie Simmentals GJB**

2023 YOUTH REPORT

By Briony Looker, President NSW Simmental Youth

TIt has been a very busy 12 months since the NSW Youth committee was formed mid last year and we have held some great events and opportunities with more on the horizon for 2024.

One of our events was the launch of a Simmental Herdsman competition at the 2023 Sydney Royal Show to run alongside the Leo Larsen commitment and compassion award.

The herdsman competition was open to anyone under the age of 21 who was working with Simmental cattle at this Sydney Royal Easter Show.

The Herdsman competition winners were:

Junior - Ned Cramp

Senior - Georgia Thompson

Overall - Cooper Taylor



Prizes for Leo Larsen and herdsman competitions.



Prizes for Leo Larsen and herdsman competitions.

ELSIE WAKE WINS LEO LARSEN AWARD

The Leo Larsen Commitment and Compassion Award is a perpetual trophy proudly supported by Sixpence Park Simmentals and is presented to a Junior simmental Member who shows commitment & compassion toward their animal and fellow competitors during the 2023 Sydney Royal Easter Show. This year's award recipient was Elsie Wake.



Elsie Wake, winner of this year's Leo Larsen Award.

We look forward to seeing everyone back at the 2024 Sydney Royal Easter Show.

Another big opportunity we offered for 2023 was the Foundation Female Opportunity generously supported by LNA Livestock, this year's recipient was Liberty Cook from Glen Innes in Northern NSW.

We wish to say a massive thankyou to Luke and Natasha Adams from LNA Livestock for supporting the initiative so strongly with the donation of one of their 2022 stud registered females and also to Simon Hale who was on the judging panel to select our winner.



Luke and Natasha Adams with Liberty Cook and the Foundation Female opportunity heifer.

This opportunity will be back in 2024 so keep an eye out for more information.

There was a very strong presence of Simmentals and Simmental youth members at the 2023 All Breeds heifer show held in Blayney, NSW. A huge congratulations to Simmental breeders and members for supporting this event so strongly.

Alongside these events our committee members have been busy showcasing and promoting the breed and educating and supporting the next generation of Simmental juniors and I am very proud of them all for being so passionate and innovative.

We look forward to being able to offer more opportunities and events in 2024 so please keep an eye out on email, post and our social media channels!



Georgia Harrington competing at Beachport Youth.



Henry Hobbs, Champion Pee Wee Parader.



Gus Harrington National Allbreeds.



Samantha Moeck and team. Olivia, Chelsea, Emma, Graham and Sam.

A LABOUR OF LOVE SINCE THE AGE OF 5 FOR BRODHI

By Matt Payne



The Brodhi farm.
Inset: Brodhi Carracher.

Simmentals have been a labour of love from the age of five for Victorian breeder, Brodhi Carracher. Having first seen the breed at a regional show, young Brodhi was in awe of what he saw.

“I was at a country show and a few Simmentals were being paraded around as Supreme Champion - and to a five year old, they’re pretty impressive - a big beast of an animal,” he explained. “Back then, they were probably a bit more muscly and had harder muscle than how they are bred now, but that was where they first caught my attention.”

Brodhi started his career by helping out family and friends and working in sale yards with cross bred cattle, but then the Simmentals came into view as to what he would choose as his breed of choice.

“I really liked the style of cattle that were being produced by the Simmental bulls out of British bred cows and that’s what probably got me initially started on them,” said Carracher.

At the age of 18, Brodhi started up Grangeburn Simmentals and this year celebrated 10 years of breeding from the farm at Wannum, just outside Hamilton in Victoria.

Currently, there are 120 head on the property and each year, Grangeburn sells around 30 bulls and a few heifers both locally and through the sales in Rockhampton.

“That’s what we’ve got at the moment, yeah I’d like to grow the herd a bit, but of course that’s land permitting as well.”

While not actively showing cattle, increase in sale prices this year have buoyed Brodhi’s confidence, particularly with his breeding being recognised by high end Queensland studs that placed some Grangeburn bulls into their herd.

“We had an online sale back in February, which we increased our average price by \$1,000 and had our highest price, which was \$15,500 on farm and then went up to Queensland and sold bulls up there. They averaged \$13,500, which we’re ecstatic with in this current market with bulls and indeed the whole commercial cattle market. A couple of those bulls went into high end stud up there in Queensland, so it was good to get some recognition by some Queensland herds that the cattle are working for us up there. It will take a couple of years to appear in the pedigree and from that obviously comes further reputation with supporters of the breed.”

Grangeburn has great relationships with American and Canadian suppliers for both embryo and semen transfers; he also deals with New Zealand suppliers.

“We’ve got a good relationship with Jason Bruketa in Canada and also some American herds where we can get embryos pretty readily out of some of their best cows that we saw a few years ago when we went over - and we’re importing those embryos every year,” he explained. “But we also use New Zealand size and Australian size as AI size, some Canadian size, some American size. Just depends what we see fit at the time.”

Some of the key differences that Brodhi found by visiting North American studs were the cattle being calved in the middle of the winter cold, with breeders having to corral them under shelter and then concentrate on hand rearing the calves to ensure they were drinking and staying under shelter, as they could suffer frostbite with after effects such as their ears falling off.

The challenge for an Australian breeder through introducing North American pedigree he says is that they can be too hairy for Australian conditions and in some cases, the size is smaller than what is conventional here.

As for the long term goal, Brodhi’s aim is to grow his own sales at a high quality level and continue to push the Simmental brand.

“I would like to grow the herd, obviously land permitting, but if we can get 50 bulls per year out into the commercial scheme every year - say 20 good black bulls and 20 to 30 good, traditional bulls - that’s probably my goal. Selling 50 bulls a year. But they’ve got to be good and commercially relevant cattle. I don’t really breed them to breed stud bulls for people; I breed them for the commercial guys and if there is one good enough there to start consideration, that’s excellent. And overall, I’d like to be spreading the Simmental love through the commercial operations if we can and in general keeping the brand recognised.”

Grangeburn Simmentals can be found at www.grangeburnsimmentals.com.au



AuctionsPlus

ONLINE BULL & FEMALE SALE

Saturday February 3rd 2024



OFFERING:

10 TRADITIONAL SIRES

10 BLACK SIMMENTAL & SIMANGUS SIRES

10 REGISTERED FEMALES

◀◀◀ 2023 high selling bull, Grangeburn Secret Weapon

JBAS 7 Vaccinations: Pestigard, 7in1, Vibrovax, Botulinum, 3 day, 3 Germ



GRANGEBURN

SIMMENTALS



CHARLES
STEWART
LIVESTOCK



Brodhi Carracher 0418 723 996 www.grangeburnsimmentals.com.au

KIDMAN DOWNS SPONSORS TASSIE JUNIOR BEEF EXPO

By Matt Payne

The Grand Champion Herdsman of the Tasmanian Junior Beef Expo in February 2024 will be the recipient of a young Simmental heifer thanks to Kidman Downs Simmentals.

Dubbed Kidman Downs Unholy 10, who will be 10 months old at the time of the Expo. The heifer was sired by Mt Ararat Ripple out of a productive Wheatland El Toro daughter within the herd. The winner will also receive two straws of semen from the breeder's semen inventory.

"Seeing the opportunities that our young people are being offered through the Tasmanian Junior Beef Expo is fantastic," said Kidman Downs owner, Chelsea Rayner. "I'm involved - as a former winner and committee member - I want to give back to an industry that has been very rewarding for me.

"Also being the winner of the award this year has also made me want to



Kidman Downs Unholy 10.

give it forward and help another aspiring cattle breeder start or develop their own program."

Chelsea is also the state association's secretary and this year was nominated as a state finalist in the Woolworths Tasmanian Young Farmer of the Year.

11 BULLS CLEARED AT SLOPES & ROLAND SALE

By Matt Payne

April saw the annual Slopes and Roland Black Simmental and Simangus sale clear 11 bulls.

It delivered good yield with the top price being \$9,500 for lot 3 (pictured) and the average was \$6,700.





NO FUSS, FUNCTIONAL FEMALES



Traditional, Black and Red Simmentals

2024 BULL SALE • 13 SEPTEMBER • ROMA SALEYARDS

Scott & Claire York • 0427 274 410 or scyork@bigpond.com

www.casatoro.com.au

BATESY AND BATMAN TAKING ON THE BEST

*Contributing Credit & Image:
Sally Gall/Queensland Country Life Magazine*

Chinchilla's Chris Bate and his 365ha Simmental-raising Batman Pastoral farm are vying for top spot in one of the biggest competitions in Queensland - the Barcoo Beef Challenge at Rodgers Creek, near Warwick.

Bate backgrounds cattle on his 365ha property, and has cattle on agistment at Blackall, the operation run with wife, Tam. They also are well known for their grill operation taking paddock to plate - 'Batesy's Smoke and Grill'.

He entered 12 Simmental Santa-cross steers into the Barcoo Beef Challenge this year, they'd bred their own cattle before the last big drought hit and had to sell them up before they could see the results of their program.

"The cattle that we sold that were out of a Simmental cow and a Santa bull got sold at Murgon and topped the sale, so we knew we had a good growing article," Bate said.

That's what's motivated him to take part in the competition that aims to see which producer's cattle do best in feedlot conditions, now in its third year.



Chris Bate and son, Kaden.

"We buy, fatten to feeder weight and send them, never to be seen again, so this is a golden opportunity for us," he said.

"With this, we can see if we're buying the right article.

"I think we do have that with these cattle - to come here and see this shows we're doing something right."

Their cattle are one of 20 teams in the challenge this year, making up 504 head on feed, of breeds ranging from Brahman and Charbray-cross to Longhorns and Angus-cross, from as far afield as Barcaldine, Charleville, Injune, and Meandarra.

The 2021 and 2022 competitions each had 396 head, and last year's competition, held earlier in the year, was subject to very wet conditions.

Bfeeders managing director Ben Maher said conditions this year had been "as perfect as you can get in this game".

Speaking at the challenge's open day on Friday, he said the cattle were eating 17kg of their barley-based ration a day, probably 1kg more than usual, due to the ideal conditions.

"The average at the 90-day mark is 15.6kg. I'd like to think they were putting on 2.2kg a day, around there," he said.

Last year for comparison, the competition steers put on 2kg/day and consumed 14.3kg of feed.

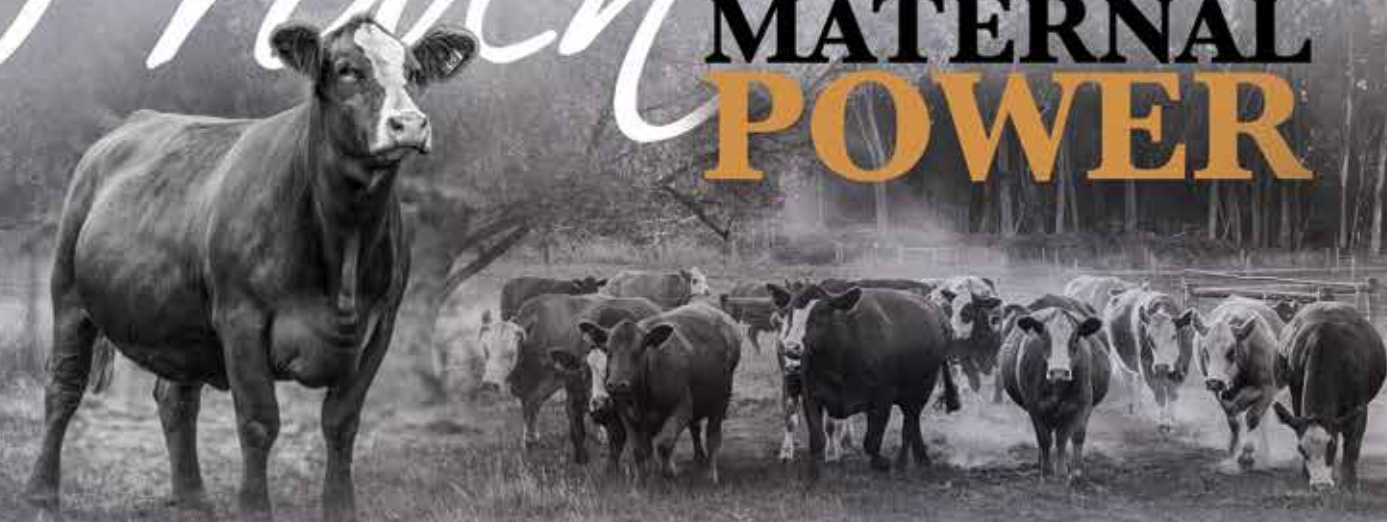
The competition came to a conclusion on October 21 with a presentation event, where Batesy's Smoke and Grill (of course!) prepared the various breeds for the judges.

No results were available at time of going to print.



Proven

MATERNAL POWER



Mavstar TURQUOISE ZRZPT232 (P)
SAS Copperhead G354 ♂ Maverick Ruby Tuesday



Mavstar TRUE LOVE ZRZPT229 (P)
KOP Spartan 113A ♂ Mavstar Dakota D708



Mavstar DAKOTA D708 – ZRZPD708 (P)
Leading Mavstar donor cow
Maverick Andy A595 ♂ Maverick Krystal Z550



Maverick RED STAR 112 PPSPR112 (P)
Supreme Champion Beef Exhibit
Melbourne Royal Show 2022
Mavstar Licorice Red (PP) ♂ Maverick My Girl



MAVSTAR
SIMMENTALS

Ross, Rita, Ruby & Jacob Canning
Myamyn Victoria

Rita: 0409959058 | Ruby: 0437130913

Cattle, semen & embryos available for private sale.

LILA BURTON

SCORING STRONGLY AT A YOUNG AGE

By Matt Payne

One of Queensland's emerging young breeders, Lila Burton has been able to rack up an impressive list of achievements both at home and interstate - and could have a career on the Rugby 7's pitch in the offering - she's one talented young lady.

Currently studying year 10 at The Glennie School in Toowoomba, she got into the game through family members and was first going to shows at the age of 11. From there she was able to breed from a heifer that was gifted to her by her uncle.

The heifer calved a bull, which she was able to on-sell to buy another heifer and continue to build her herd.

She extended her knowledge of the Simmental breed by attending the 2019 Youth Camp in Queensland and then she was awarded the 2022 'Beefing Up the Next Generation' Joe Tones Memorial as a Champion Herdsman.

With the support of the Tones family, it granted her a bursary to Tasmania Junior Beef Expo earlier this year.

"It was a great experience, the show down there was very different to the shows up here," Lila explained. "It was a lot smaller, but a great experience to be in another state and see how things are done."

"For me, there were a lot of people that I knew from being involved in Simmentals, but hadn't physically met until I got to Tasmania, so that was good, along with meeting new people within the breeding community, so was able to build my network out."

Lila had an immediate impact in Tasmania, bringing back with her a whole host of Champion awards. She brought back to Queensland recognition as the Champion



Lila Burton, Tasmania Junior Beef Expo.

Intermediate Judge of the Tasmanian Junior Beef Expo, along with Champion Intermediate Handler and overall, the Grand Champion Handler.

She has also been awarded the 2023 National All Breeds Heifer Show Award/Exchange, sponsored by Castlegate James, where participants had to apply for the award and then undergo an interview with a panel.

"The opportunities I've had couldn't have been possible without my uncle Steve and my family - and I have to thank the Tones family for the chance to go to Tasmania, represent Queensland and Joe's memory."

Outside of Simmental breeding and breaking in cattle, Lila is a talented Rugby 7's and Touch Football player. In 2023, she had been to a representative 7's competition in Fiji and was preparing when we caught up with her for a summer of beach competition.

While young and not sold precisely on what her future in livestock looks like (she is thinking down the agribusiness track right now), one thing is for sure, Lila Burton is sure to be a success - whether that be on the Rugby 7's pitch or on the land... or both!



Lila Burton with Elisabeth Skene - Joe Tones Memorial Trophy.

17th Annual Elite Production Sale



Woonallee Simmentals

Thursday, 8th February, 2024
1pm on Property • 110 bulls on offer

Field Day 5th February, 2024

Contact Tom & Lizzy Baker

Phone: 0428 475 066 Email: tbaker@bakergroup.com.au

www.woonalleesimmentals.com

Follow us



For the very best in Simmental, whatever the requirement

CANADIAN SIMMENTAL *hosts the* **WORLD** **JULY 29 TO AUGUST 4**



Taking Place In
Beautiful Alberta, Canada
Touring Central Alberta
including events in
Calgary, Olds, Banff & Strathmore

TENTATIVE SCHEDULE

MONDAY JULY 29

Tours, Welcome Reception & Opening Ceremonies

TUESDAY JULY 30

Farm Tours – Central Alberta

WEDNESDAY JULY 31

WSFF Board Meeting, Banff Tour

THURSDAY AUG. 1

Farm Tours – Central & North Central Alberta

FRIDAY AUG. 2

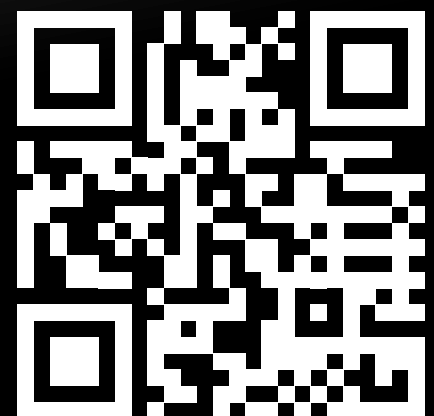
Speakers, YCSA events, Simmental Sale

SATURDAY AUG. 3

YCSA show, FCSF Auction

SUNDAY AUG. 4

Strathmore Rodeo, Closing Ceremonies





Elite

CATTLE CO

BLACK SIMMENTAL | SIM-ANGUS

**2024 ANNUAL
ON-PROPERTY BULL SALE**

Thursday, 5th September

Thank You

TO ALL OF THOSE WHO SUPPORTED OUR 2023 SALE



ELITE SLEDGEHAMMER

Sold to Eden Hills Simmentals for \$30,000



ELITE SWEEPSTAKE

Sold to Karragarra Simmentals for \$30,000

**COME SEE US EXHIBIT AT MAJOR CATTLE
EVENTS IN 2024 INCLUDING...**



**BEEF
2024**

**ROCKHAMPTON
AUSTRALIA
MAY 5-11**

Glen Waldron & Kim Groner

207 Meandarra-Talwood Road, Meandarra Qld 4422

Glen 0438 662 117 Kim 0433 333 805 e. info@elitecattleco.com.au elitecattleco.com.au

cattleloguequeen.com.au



VALE BERNARD EVANS 1945 - 2023

The family of Bernard Evans is saddened to announce his passing on October 2nd, 2023. Aged 78 years.

Bernie was dearly loved by his family.

He will be sadly missed by many.

Beloved husband of Fiona, former beloved husband of Faye.

Father to Demelza and Austin, Estelle, Gabrielle and David, Justin and Brooke.

Loving Pop to Oht, Declan, Darby and Wilkie, Tahlia, Ryan, Hayden, Riley, James, Fairlie, Henry and Clancy. And loved stepfather of Daniel and Stuart Martin and Poppy to Annabelle and Lilith.



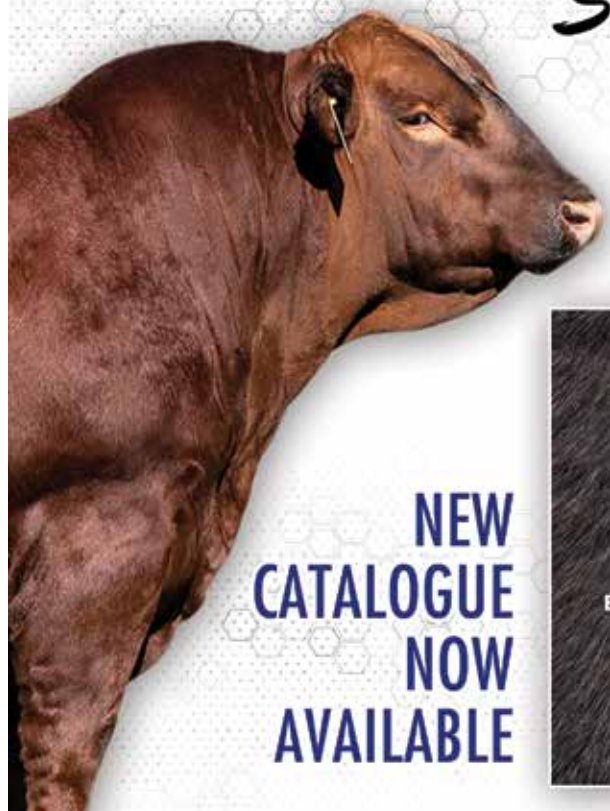


7SM93
HONOR GUARD

EXCITING SIRES

Simmental

7SM128
MAJOR IMPACT



NEW
CATALOGUE
NOW
AVAILABLE



wwwsaustralia.com

ROYAL BRISBANE SHOW 2023

Simmental Results

JUNIOR CHAMPION FEMALE
GK TRUE MASTERPIECE

RESERVE JUNIOR CHAMPION FEMALE
K.B.V. TULLY

SENIOR CHAMPION FEMALE
K.B.V. ROMY

RESERVE SENIOR CHAMPION FEMALE
GK 520 ROYAL KEEPSAKE

GRAND CHAMPION FEMALE
K.B.V. ROMY

JUNIOR CHAMPION MALE
K.B.V. TERMINATOR

RESERVE JUNIOR CHAMPION MALE
ELLEDALE RED HOT SHERIFF

SENIOR CHAMPION MALE
MELDON PARK STAMP DUTY

RESERVE SENIOR CHAMPION MALE
K.B.V. SENSATION

GRAND CHAMPION MALE
MELDON PARK STAMP DUTY

PAIR OF BULLS
SILVER LININGS SIMMENTALS

BREEDER'S GROUP
K.B.V. SIMMENTALS

PROGENY STAKES GROUP
SILVER LININGS SIMMENTALS

Simbrah Results

SENIOR & GRAND CHAMPION MALE
K.B.V. SAMPSON



Grand Champion Female: K.B.V. Romy



Grand Champion Male: Meldon Park Stamp Duty



Grand Champion Simbrah: K.B.V. Sampson

SYDNEY

ROYAL SHOW 2023

Results

JUNIOR CHAMPION FEMALE
AUSBRED MIKIMOTO PEARL

RESERVE JUNIOR
CHAMPION FEMALE
WOONALLEE TANK S555

SENIOR CHAMPION FEMALE
AUSBRED TAHITIAN PEARL

RESERVE SENIOR
CHAMPION FEMALE
VC CREAM SODA S031

GRAND CHAMPION FEMALE
AUSBRED MIKIMOTO PEARL

JUNIOR CHAMPION MALE
**HOBBS LIVESTOCK
SUDDEN IMPACT**

RESERVE JUNIOR
CHAMPION MALE
ELITE STERLING

SENIOR CHAMPION MALE
HARTFIELD SALVATORE

RESERVE SENIOR
CHAMPION MALE
HERLO PARK ROVER

GRAND CHAMPION MALE
HARTFIELD SALVATORE

TWO BULLS NOT OVER
24MTHS
HOBBS LIVESTOCK

SIRE'S PROGENY
HOBBS LIVESTOCK

DAM'S PROGENY
AUSBRED SIMMENTALS

BREEDER'S GROUP
ELITE CATTLE CO

BEST EXHIBIT
HARTFIELD SALVATORE



Junior & Grand Champion Female: Ausbred Mikimoto Pearl



Supreme Simmental Exhibit: Hartfield Salvatore (PP)

CANBERRA

ROYAL SHOW 2023

Results

JUNIOR CHAMPION FEMALE
VC LINETTEE S043

RES JNR CHAMP FEMALE
TENNYSONVALE SQUIDGET

SENIOR CHAMPION FEMALE
AUSBRED TAHITIAN PEARL

RES SNR CHAMP FEMALE
HERLO PARK SABRINA

GRAND CHAMPION FEMALE
AUSBRED TAHITIAN PEARL

JUNIOR CHAMPION MALE
HARTFIELD SALVATORE

RES JNR CHAMPION MALE
TENNYSONVALE SAGE

SENIOR CHAMPION MALE
HERLO PARK RAMBO

GRAND CHAMPION MALE
HARTFIELD SALVATORE

SUPREME EXHIBIT
AUSBRED TAHITIAN PEARL



Supreme Exhibit: Ausbred Tahitian Pearl

ROYAL SHOW 2023

Results

JUNIOR CHAMPION FEMALE
WOONALLEE MOVIN FORWARD

RESERVE JUNIOR CHAMPION FEMALE
TOLHVERRAE TIGER LILLY

SENIOR CHAMPION FEMALE
WOONALLEE IRENE

RESERVE SENIOR CHAMPION FEMALE
WOONALLEE KATHIE

GRAND CHAMPION FEMALE
WOONALLEE IRENE

JUNIOR CHAMPION MALE
WOONALLEE TOLD YOU SO

RESERVE JUNIOR CHAMPION MALE
JILLANGOLO TAKE A BOW

SENIOR CHAMPION MALE
WOONALLEE S.K.W.

GRAND CHAMPION MALE
WOONALLEE TOLD YOU SO

SUPREME EXHIBIT
WOONALLEE TOLD YOU SO

SIRE'S PROGENY GROUP
WOONALLEE Q123

BREEDER'S GROUP
WOONALLEE



Supreme Exhibit: Woonallee Told You So

Led Steer Feature Results

*** GLENTAL SIMMENTALS, EXHIBITING A PUREBRED BLACK SIMMENTAL STEER "ST PAUL T483"**

- THE THOMAS FOODS INTERNATIONAL PRIZE RESERVE CHAMPION PUREBRED LIGHT DOMESTIC STEER ON HOOF
- THE THOMAS FOODS INTERNATIONAL PRIZE CHAMPION PUREBRED HEAVY DOMESTIC STEER ON HOOK
- THE ELDERS PRIZE CHAMPION PUREBRED STEER ON HOOK

*** LA LIVESTOCK, EXHIBITING A SIMANGUS STEER "LA TRAIN WRECK"**

- THE THOMAS FOODS INTERNATIONAL PRIZE RESERVE CHAMPION CROSSBRED HEAVY DOMESTIC STEER ON HOOF
- THE THOMAS FOODS INTERNATIONAL PRIZE RESERVE CHAMPION CROSSBRED EXPORT CARCASE

*** JILLANGOLO SIMMENTALS, EXHIBITING A SIMANGUS STEER "JILLANGOLO THUNDERSTRUCK"**

- THE THOMAS FOODS INTERNATIONAL PRIZE CHAMPION CROSSBRED LIGHT DOMESTIC STEER ON HOOF
- THE THOMAS FOODS INTERNATIONAL PRIZE CHAMPION CROSSBRED LIGHT DOMESTIC STEER ON HOOK
- THE PRINCESS ROYAL STATION PRIZE BEST LIGHT DOMESTIC EATING QUALITY CARCASE - BEST LIGHT DOMESTIC EATING QUALITY CARCASE - THIRD

*** LANCASTER SIMMENTALS, EXHIBITING A SIMANGUS STEER "LCS TIMMY T055"**

- THE THOMAS FOODS INTERNATIONAL PRIZE CHAMPION CROSSBRED EXPORT STEER ON HOOK

- THE NUTRIEN LIVESTOCK PRIZE CHAMPION CROSSBRED STEER ON HOOK CHAMPION
- THE THOMAS FOODS INTERNATIONAL PRIZE GRAND CHAMPION STEER ON HOOK

*** WOONALLEE SIMMENTALS, EXHIBITING A SIMANGUS "WOONALLEE THUNDERMUFFIN"**

- THE THOMAS FOODS INTERNATIONAL PRIZE RESERVE CHAMPION CROSSBRED EXPORT STEER ON HOOF

*** WOONALLEE SIMMENTALS, EXHIBITING A BLACK SIMMENTAL "WOONALLEE TRICK OR TREAT"**

- THE THOMAS FOODS INTERNATIONAL PRIZE RESERVE CHAMPION PUREBRED EXPORT CARCASE



Jillangelo Thunderstruck



LA Trainwreck



St Pauls T483

TOOWOOMBA

ROYAL SHOW 2023

Results

CHAMPION CALF FEMALE
KBV TEMPERENCE

RESERVE CHAMPION CALF
FEMALE
**ELLEDALE WHO'S CATWALK
QUEEN**

JUNIOR CHAMPION FEMALE
ELLEDALE CINDERELLA BLING

RESERVE JUNIOR CHAMPION
FEMALE
TRINITY VALE SPRITE

SENIOR CHAMPION FEMALE
TRINITY VALE QUEEN OF HEARTS

RESERVE SENIOR CHAMPION
FEMALE
TRINITY VALE RAZZAMATAZZ

GRAND CHAMPION FEMALE
ELLEDALE CINDERELLA BLING

CHAMPION CALF MALE
ELLEDALE RED HOT SHERIFF

RESERVE CHAMPION CALF MALE
TRINITY VALE STANDING OVATION

SENIOR CHAMPION MALE
KBV SENSATION

GRAND CHAMPION MALE
KBV SENSATION

SUPREME EXHIBIT
KBV SENSATION

SUPREME EXHIBIT OF SHOW
ELLEDALE CINDERELLA BLING



Supreme Simmental Exhibit: KBV Sensation

PERTH

ROYAL SHOW 2023

Results

JUNIOR CHAMPION FEMALE
BRADFORD TREASURE

RESERVE JUNIOR CHAMPION
FEMALE
BANDEEKA TOPAZ

SENIOR CHAMPION FEMALE
BANDEEKA BLACKS SPANGLES

RESERVE SENIOR CHAMPION
FEMALE
BANDEEKA BLACKS ROXY

GRAND CHAMPION FEMALE
BRADFORD TREASURE

JUNIOR CHAMPION MALE
BANDEEKA TAYLOR MADE

RESERVE JUNIOR CHAMPION
MALE
BRADFORD TURBO

GRAND CHAMPION MALE
BANDEEKA TAYLOR MADE

SUPREME EXHIBIT
BRADFORD TREASURE



Res Jnr Champion Female: Bandeeka Topaz



Grand Champion Male: Bandeeka Taylor Made



Grand Champions for Supreme



Supreme Exhibit: Bradford Treasure

MELBOURNE

ROYAL SHOW 2023

Results

JUNIOR CHAMPION FEMALE
WOONALLEE VASTI T188

RESERVE JUNIOR
CHAMPION FEMALE
**WOONALLEE TINKERBELL
T440**

SENIOR CHAMPION FEMALE
WOONALLEE KATHIE S146

RESERVE SENIOR
CHAMPION FEMALE
**GB LIVESTOCK LADY
MISSILE**

GRAND CHAMPION FEMALE
WOONALLEE VASTI T188

JUNIOR CHAMPION MALE
**JILLANGOLO TAKE A BOW
T30**

RESERVE JUNIOR
CHAMPION MALE
**SYLVANDALE COWBOY CUT
T097**

SENIOR CHAMPION MALE
WOONALLEE SKW S477

GRAND CHAMPION MALE
WOONALLEE SKW S477

SUPREME EXHIBIT
WOONALLEE VASTI T188



Grand Champion Female: Woonallee Vasti T188



Grand Champion Bull: Woonallee SKW S477



Supreme Exhibit: Woonallee Vasti T188



Supreme Exhibit Beef Interbreed

LAUNCESTON

ROYAL SHOW 2023

Results

Heifer 01/03/22-31/05/22
**1ST KIDMAN DOWNS TRULY
REGAL**

Exhibited by Sheffield School
**2ND KIDMAN DOWNS
TANGO**

Exhibited by Chelsea Rayner
**3RD KIDMAN DOWNS
TIMELESS BEAUTY**

Exhibited by Sheffield School
Heifer 01/06/22-31/07/22
1ST HARTFIELD TOKYO

Exhibited by M & M Partridge
JUNIOR & GRAND CHAMPION
SIMMENTAL FEMALE
**KIDMAN DOWNS TRULY
REGAL**

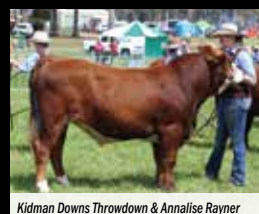
Exhibited by Sheffield School

RESERVE JUNIOR CHAMPION
SIMMENTAL FEMALE
HARTFIELD TOKYO
Exhibited by M & M Partridge

BULL CLASSES
1ST, JUNIOR AND GRAND
CHAMPION SIMMENTAL
BULL
**KIDMAN DOWNS
THROWDOWN** Exhibited by
Chelsea Rayner

GROUP OF THREE
1ST KIDMAN DOWNS
Chelsea Rayner

ASA NATIONAL JUNIOR
JUDGING CHAMPIONSHIPS
RESERVE CHAMPION
CHELSEA RAYNER



Kidman Downs Throwdown & Annalise Rayner



Kidman Downs Truly Regal & Ruby Rayner



Kidman Downs team of three - Kidman Downs Throwdown with Annalise Rayner, Kidman Downs Treasure with Jordan Burr & Kidman Downs Truly Regal with Ruby Rayner.



Kidman Downs group of three.

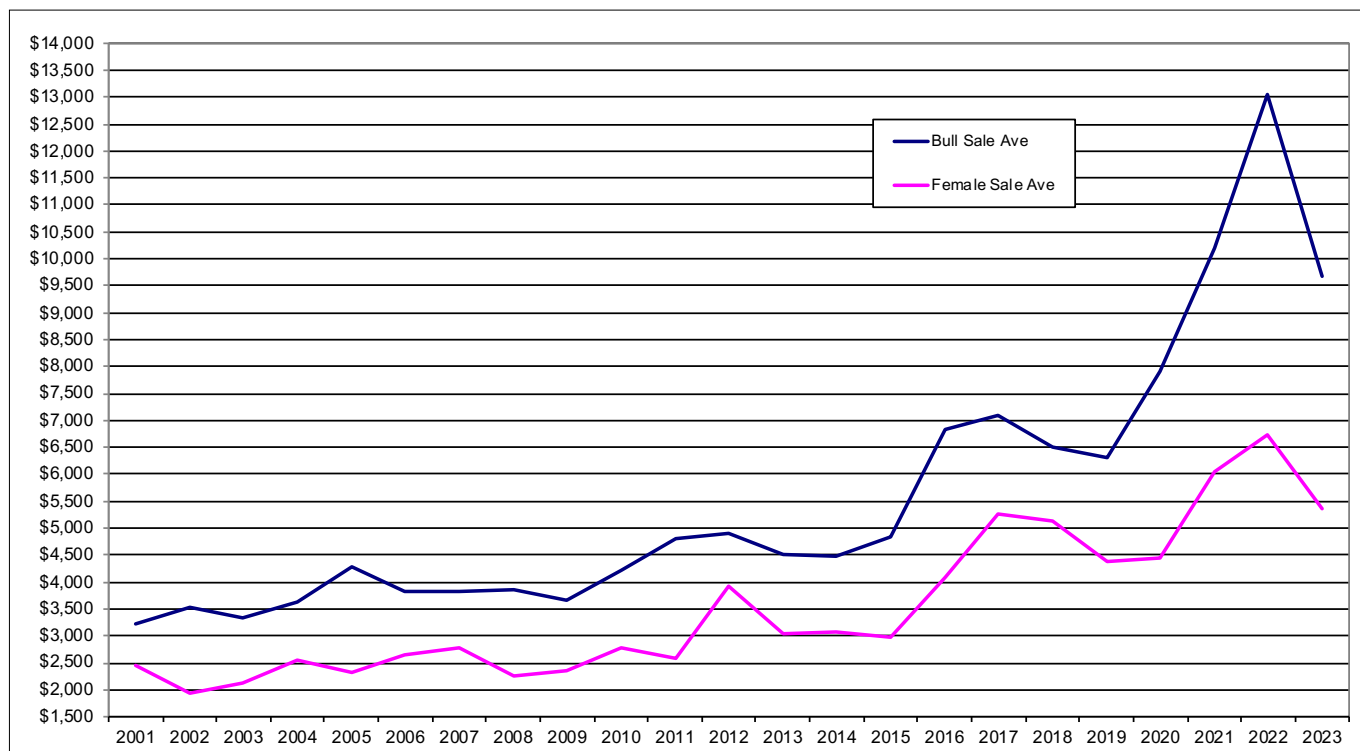


Judge Tim Woodham & Chelsea Rayner, ASA National Beef Young Judge Runner Up 2023

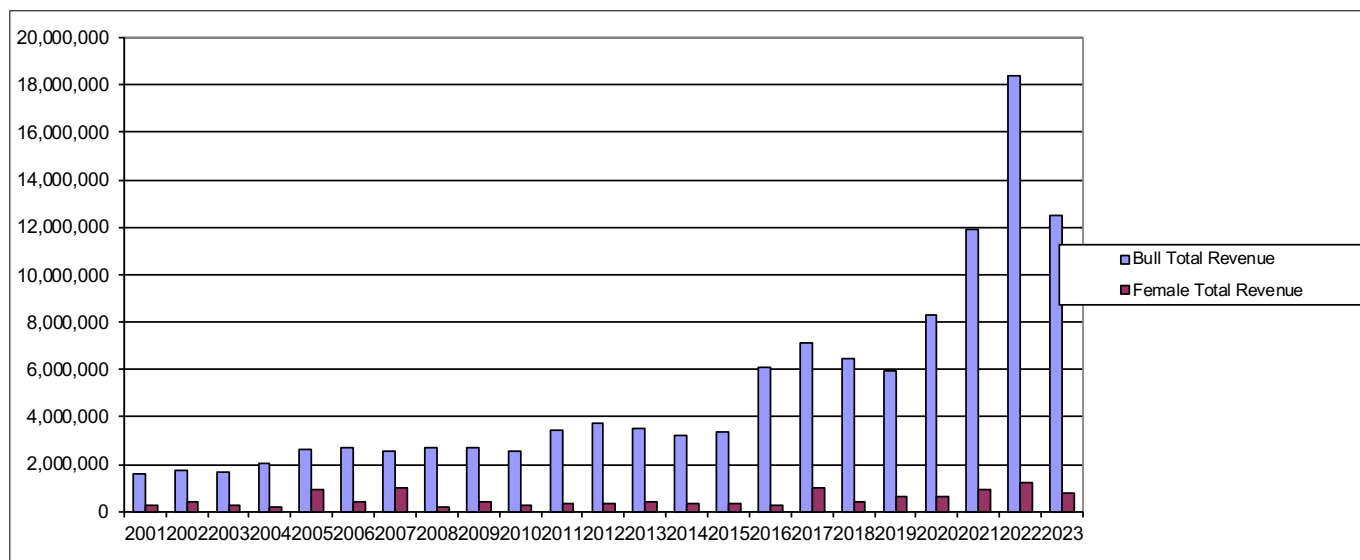


ASA National Beef Young Judges placetoppers - Sam Parish, NSW Champion, Chelsea Rayner, Tas, Reserve Champion, Sam Lynch, WA, 3rd.

SALE AVERAGES 2001-2023



TOTAL SALE REVENUE 2001-2023





Simmental
AUSTRALIA

IGS EPD AVERAGES

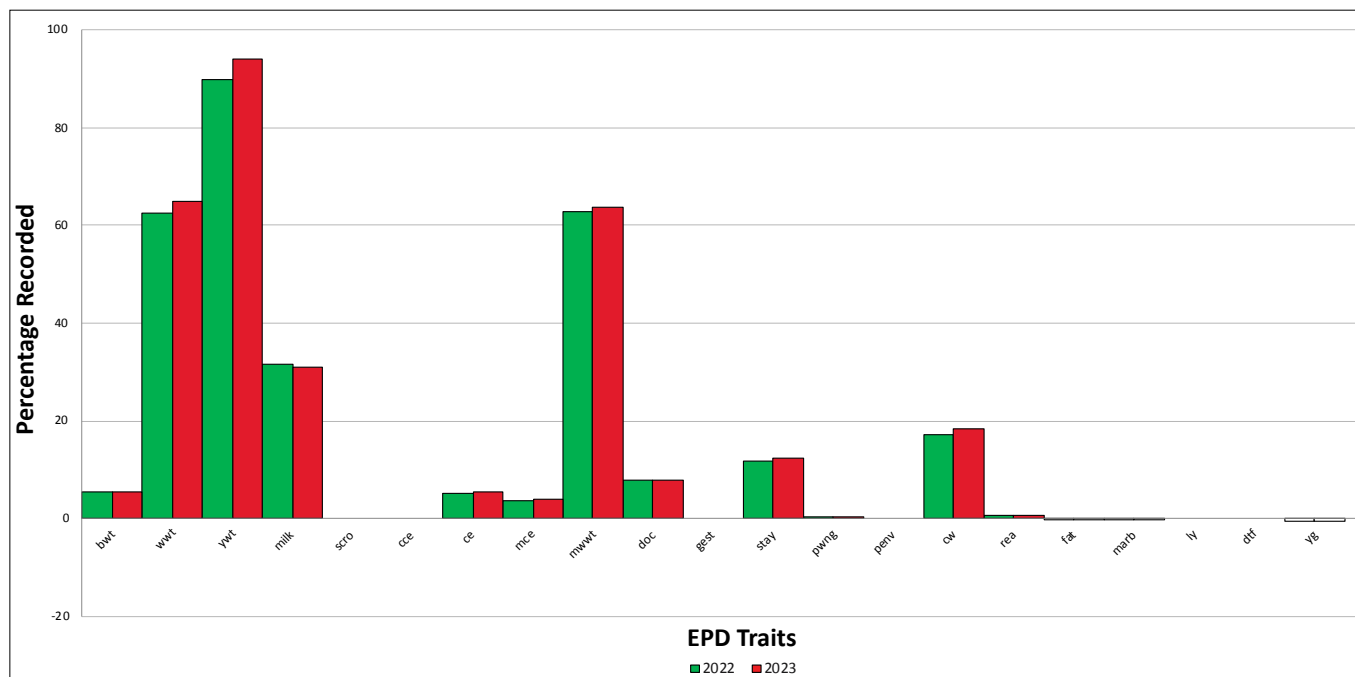
- All averages are based on a 5 year rolling average so calves born in the last 5 years.
- Apart from the trend graph which is a direct year average.

BREED AVERAGE - SIMMENTAL

CTYPE	BWT	WWT	YWT	MILK	SCRO	CCE	CE	MCE	MWWT	DOC	GEST	STAY
AVG	5.657	69.924	101.394	32.826			5.297	3.67	67.741	8.602		13.684
MAX	14.7	11	160.7	56.6			20.1	13.4	98.1	23.5		24.6
MIN	-5.2	22.4	31	0.3			-7.1	-8.5	11.5	-11.1		-0.1

PWNG	PENV	CW	REA	FAT	MARB	LY	DTF	YG	API	TI	AAPI	ATI
0.197		21.155	0.794	-0.12	-0.086			-0.506	96.595	63.026	44.772	37.246
0.37		69.1	1.49	0.059	0.78			0.242	179.23	94.26	103.05	155.69
0.02		-35.5	-0.1	-0.183	-0.74			-0.746	52.49	38.9	-34.59	-107.7

GENETIC TRENDS



ACCURACY AND POSSIBLE CHANGE

Every EPD is presented with an associated accuracy value. Accuracy values reflect the amount of information available on the animal and it relatives for use in genetic evaluation. As we obtain and use more information in evaluating an animal's genetic merit, the accuracy value will increase. Accuracy values can range from 0.00 and 1.00 with a higher value representing greater accuracy.

Because accuracy indicates available information, they are extremely valuable as a risk management tool. The higher the accuracy the more certain we are of an animal's genetic merit and thus, the less risk there is in using the animal. The table shows the possible change (plus or minus) in the EPD of an animal, based on its' accuracy. Any EPD changes are expected to fall within this range (EPD plus and minus the possible change) 95% of the time.

Acc	CE	BW	WW	YW	MCE	Milk	MWW	Stay	CW	REA	Fat	Marb
0.00	7.8	3.0	16.3	25.7	7.9	11.9	12.1	7.1	19.3	0.43	0.04	0.26
0.10	7.0	2.7	14.7	23.1	7.1	10.7	10.9	6.4	17.4	0.39	0.04	0.23
0.20	6.2	2.4	13.0	20.6	6.3	9.5	9.7	5.7	15.4	0.34	0.03	0.21
0.30	5.4	2.1	11.4	18.0	5.5	8.3	8.5	4.9	13.5	0.30	0.03	0.18
0.40	4.7	1.8	9.8	15.4	4.7	7.1	7.3	4.2	11.6	0.26	0.02	0.16
0.50	3.9	1.5	8.2	12.9	3.9	6.0	6.1	3.5	9.7	0.22	0.02	0.13
0.60	3.1	1.2	6.5	10.3	3.1	4.8	4.8	2.8	7.7	0.17	0.02	0.10
0.70	2.3	0.9	4.9	7.7	2.4	3.6	3.6	2.1	5.8	0.13	0.01	0.08
0.80	1.6	0.6	3.3	5.1	1.6	2.4	2.4	1.4	3.9	0.09	0.01	0.05
0.90	0.8	0.3	1.6	2.6	0.8	1.2	1.2	0.7	1.9	0.04	0.00	0.03
1.00	0.0	0.0	0.0	0.0	0.0	0.0	0.0	0.0	0.0	0.00	0.00	0.00

Statistics from the Aug 8, 2023 BOLT Evaluation

EPDs are directly comparable, regardless of the accuracy, and they are also the most reliable reflection of an animal's genetic merit. Accuracies, simply reflect potential risk.

EPD RANKING - SIMMENTAL

%	BWT	WWT	YWT	MILK	SC	CCE	CE	MCE	MWWT	DOC	GEST	STAY	PWNG	PENV	CW	REA	FAT	MARB	LY	DTF	YG	API	TI	AAPI	ATI
1	-0.4	95.7	139.98	45.48			14.1	9.4	86.5	16.3		20.5	0.3		43.88	1.128	-0.044	0.288			-0.649	140.164	83.986	81.234	90.306
2	0.5	92.5	135.5	43.9			12.7	8.5	84	15.2		19.7	0.28		40.7	1.08	-0.062	0.22			-0.629	129.246	80.068	76.412	83.336
3	1.3	90.2	132.3	42.8			12	8	82.7	14.6		19.3	0.27		38.5	1.05	-0.073	0.17			-0.619	124.79	78.07	73.774	77.394
4	1.4	88.4	129.5	42.1			11.6	7.7	81.5	14.1		19	0.27		36.9	1.04	-0.079	0.13			-0.611	121.67	76.71	71.89	73.8
5	1.8	87	127.6	41.6			11	7.4	80.7	13.7		18.7	0.26		35.6	1.02	-0.085	0.11			-0.604	119.52	75.64	70	70.78
10	3.1	82.4	121.1	39.8			9.5	6.4	77.8	12.1		17.8	0.25		31.5	0.97	-0.102	0.05			-0.582	112.89	71.76	64.75	62.02
15	3.8	79.6	116.7	38.6			8.5	5.9	75.8	11.3		17.1	0.24		29.2	0.93	-0.107	0.01			-0.568	109.39	69.61	60.23	56.36
20	4.3	77.6	113.4	37.7			7.7	5.5	74.3	10.6		16.5	0.23		27.5	0.91	-0.111	0			-0.558	106.49	68.01	56.86	52.56
25	4.7	75.9	110.8	37			7.1	5.2	73	10		16	0.22		26.1	0.88	-0.114	-0.02			-0.549	104.01	66.88	54.24	49.02
30	5	74.4	108.4	36.2			6.6	4.8	71.8	9.5		15.5	0.22		25	0.86	-0.116	-0.03			-0.541	101.92	65.79	51.69	46.17
35	5.2	73	106.3	35.5			6.1	4.5	70.7	9.1		15	0.21		23.9	0.85	-0.118	-0.05			-0.534	100.02	64.79	49.4	43.62
40	5.4	71.8	104.4	34.9			5.7	4.2	69.8	8.7		14.6	0.2		22.8	0.83	-0.12	-0.06			-0.527	98.16	63.91	47.31	41.44
45	5.7	70.7	102.6	34.3			5.4	4	68.9	8.4		14.2	0.2		21.9	0.81	-0.122	-0.07			-0.52	96.49	63.1	45.37	39.11
50	5.9	69.6	100.8	33.6			5	3.8	67.9	8.2		13.8	0.2		20.9	0.8	-0.123	-0.08			-0.514	94.81	62.3	43.53	36.77
55	6	68.5	99	32.9			4.7	3.5	67	7.9		13.4	0.19		19.9	0.78	-0.124	-0.1			-0.508	93.35	61.56	41.81	34.56
60	6.3	67.5	97.5	32.1			4.3	3.2	66	7.7		12.9	0.19		18.9	0.77	-0.126	-0.11			-0.501	91.87	60.71	40.21	32.13
65	6.5	66.3	95.7	31.2			4	2.9	65.1	7.5		12.5	0.18		17.9	0.75	-0.128	-0.12			-0.495	90.67	59.93	38.55	29.8
70	6.7	65.1	94	30.2			3.6	2.6	64	7.3		12	0.18		16.8	0.74	-0.129	-0.14			-0.488	89.2	59.14	36.86	27.08
75	6.9	63.8	91.9	29.2			3.3	2.2	62.9	7		11.5	0.17		15.6	0.72	-0.131	-0.16			-0.479	87.69	58.28	35	24.27
80	7.2	62.2	89.5	28.1			2.9	1.8	61.5	6.7		11.1	0.17		14.5	0.69	-0.133	-0.18			-0.469	85.75	57.37	33.28	21.59
85	7.5	60.5	86.7	26.6			2.3	1.4	60.1	6.3		10.5	0.16		13.1	0.67	-0.136	-0.2			-0.455	83.86	56.39	30.69	18.19
90	7.9	58.2	83.4	24.4			1.7	0.8	58	5.8		9.6	0.15		11	0.63	-0.139	-0.23			-0.433	81.56	55.22	27.66	13.51
95	8.6	54.6	77.3	21.9			0.6	-0.1	54.6	4.8		8.3	0.13		8.5	0.54	-0.145	-0.29			-0.376	78.33	53.39	22.27	6.62

SALE RESULTS: A SNEAK PEEK

GREAT SOUTHERN BLUE RIBBON BULL SALE (WA) - JANUARY 19TH

Top Price: \$19,500

Inlet Views sold 4/5 to a top of \$10,000 for Lot 1, Inlet Views Sterling.

Naracoopa sold 11/11 bulls to a top of \$19,500 for Lot 17, Naracoopa Senior.



Naracoopa Senior

GRANGEBURN SIMMENTALS (VIC) - FEBRUARY 3RD

Top Price: \$15,500 with an average of \$8,876

12/13 bulls sold to \$15,500 for Lot 2, Grangeburn Secret Weapon and averaged \$8,876 and 7/7 registered heifers sold to \$6,000 for Lot 17, Grangeburn Onyx T39 and averaged \$4,572.



Grangeburn Secret Weapon

YERWAL EST & MT MOONEY SIMMENTALS (SA) - FEBRUARY 7TH

14/17 bulls averaged \$7,553 and topped at \$12,500.

4/4 Traditional Simmentals topped with Mt Mooney Simmentals with their Lot 7 Mt Mooney Parker W Simpson at \$12,500 sired by Yerwal Estate Power Play and bulls averaged \$7,400.

8/8 SimAngus bulls topped at \$10,050 with Lot 13 Yerwal Estate Superman and averaged \$7,706.

2/4 Black Simmentals topped at \$8,000 and averaged \$7,500.

0/1 Red Simmentals sold



Mt Mooney Parker W Simpson



Yerwal Estate Superman

LAKESIDE SIMMENTALS (SA) - FEBRUARY 8TH

Top Price: \$22,000

13 Bulls sold from 32 offered.

12 2021 Drop PTIC Stud Heifers sold from 13 offered, Top \$4,750.

10 2022 Drop Stud Heifer sold from 21 offered, Top \$7,750.



Lakeside Son of Luke

TUGULAWA SIMMENTALS (SA) - FEBRUARY 9TH

Top Price: \$7,500 with an average of \$6,875

7 Black bulls offered, 7 sold to a top of \$7,500 to average \$7,000. 12 traditional bulls offered, 7 sold to a top of \$7,500 to average \$6,750. All bulls sold to repeat buyers. 13 females offered, 9 sold to top of \$4,750 to L Bruggerman. 9 females averaged \$3,960.



Tugulawa Soul

SALE RESULTS: A SNEAK PEEK



WOONALLEE SIMMENTALS (SA) - FEBRUARY 9TH

Top Price: \$60,000 , with an average of \$15,009

113/113 bulls sold to a top of \$60,000 Lot 2, Woonallee Secret Service S086 selling to Gold Creek Simmentals and Agri-Gene and averaged \$15,009.



FEBRUARY ALL BREEDS (QLD) - FEBRUARY 14TH

Top Price: \$50,000 with an average of \$10,292

48 Simmentals sold to a top of \$50,000 for Lot 459, Eden Hills Rissolle and averaged \$10,292.



BREWER BEEF (VIC) - FEBRUARY 17TH

Top Price: \$13,000 with an average of \$6,326

23/23 Black Simmental /SimAngus Bulls sold to a top of \$13,000 and averaged \$7,152. 2/3 Simmental Bulls sold to a top of \$6,000 and averaged \$5,500.



TOPWEIGHT (WA) - FEBRUARY 18TH

Top Price: \$12,000 with an average of \$6,538

13/16 bulls sold to a top of \$12,000 for Lot 6, Topweight T22 and averaged \$6,538. Lot 19 pick of a heifer sold for \$5,500.



WILLANDRA SIMMENTAL (WA) - FEBRUARY 21ST

Top Price: \$49,000 with an average of \$8,859

Females Top Price: \$8,500 with an average of \$5,562

32/42 bulls sold to a top price of \$49,000 for Lot 4, Willandra Sebastian selling to Woonallee Simmentals and averaged \$8,859.



VALLEY CREEK SIMMENTALS (NSW) - MARCH 4TH

Bulls Top Price: \$8,000

Females Top Price: \$11,000

24 lots offered topping at \$8,000 for bulls and \$11,000 for females. Semen straws sold to \$240 for an average of \$220.

SALE RESULTS: A SNEAK PEEK

ST PAULS GENETICS (NSW) - MARCH 10TH

Top Price: \$11,000

5/5 bulls sold to a top of \$10,500 and averaged \$6,600. 23/26 PTIC heifers sold to a top of \$11,000 and average \$4,717. 18/18 PTIC cows sold to a top of \$8,500 and averaged \$5,722.

8/10 Embryo lots to top of \$800 per embryo, average \$638/embryo.

9/11 Semen lots to top of \$330 per straw, average \$87/straw.



St Pauls Story Time

BONNYDALE BLACK SIMMENTALS (WA) - MARCH 13TH

Top Price: \$27,000 with an average of \$11,408

76/80 bulls sold to \$27,000 for Lot 8, Bonnydale Rock N Roll T232 and averaged \$11,408.



Bonnydale Rock n Roll

BLACK STUMP BULL SALE (QLD) - MARCH 15TH

Simmentals Top Price: \$12,500 with an average of \$7,818

11/14 Simmentals topped at \$12,500 for Lot 31 and averaged \$7,818. 5/12 Simbrahs topped at \$7,500 for Lot 42 and averaged \$6,200.



Nexgen Tamworth T024

NEXGEN BULL SALE (WA) - MARCH 20TH

Top Price: \$16,000 with an average of \$7,000

13/18 bulls sold to a top of \$16,000 for Lot 4, Nexgen Tamworth T024 and averaged \$7,000.

WALSA BRUNSWICK SUPREME BULL SALE (WA) - MARCH 22ND

Top Price: \$20,000 with an average of \$10,000

26/33 bulls sold to a top of \$20,000 for Lot 3, Bandeeka Sensation S007 to average \$10,000.



Bandeeka Sensation

BULLOCK HILLS (WA) - MARCH 29TH

Top Price: \$19,000 average of \$7,750

32/36 bulls sold to a top of \$19,000 and averaged \$7,750. 2/2 cows and calves sold to a top of \$5,200 and averaged \$4,600. 6/6 heifers sold to a top of \$2,100 and averaged \$2,000.

SLOPES AND ROLAND BLACKS (TAS) - APRIL 5TH

Top Price: \$9,500 average of \$6,700

11/11 bulls - topped at \$9500 average \$6700.



Slopes S341

SALE RESULTS: A SNEAK PEEK



MT ARARAT SIMMENTALS (VIC) – APRIL 21ST

Top Price: \$6,000 five times average of \$6,000

5/10 bull sold to a top of \$6,000 five times, averaging \$6,000.



TENNYSONVALE SIMMENTALS (NSW) – MAY 27TH

Top Price: \$25,000 average of \$8,233 bulls and females Top \$14,000 average \$5,328

33/45 bulls sold to a top price of \$25,000 for a average of \$8,233.

41/43 Unjoined, registered females sold to a top price of \$14,000 to average \$5,328.



SIMMENTAL NATIONAL SALE (NSW) – JUNE 16TH

Bulls Top Price: \$19,000 Females Top Price: \$4,750

A top price of \$19,000 for Hartfield Salvatore, an outstanding bull. In the females, top price went to Lot 26 Summit Little Dessi for \$4,750. Embryos sold to an equal top price of \$600 per embryo. Semen lots sold to a top of \$130/straw for Lot 40, Scottish Herod.



AG GROW FIELD DAYS SALE (QLD) - JUNE 24TH

Top Price: \$30,000 average of \$9,049

45 bulls sold to a top of \$30,000 for Herlo Park Rover selling to the Goodwin family of Kingston Grazing Co at Alpha and averaged \$9,049.



BARANA SIMMENTALS (NSW) - JULY 7TH

Top Price: \$18,000 average of \$7,761

23/33 Simmental bulls sold to top \$18,000 & averaged \$7,761. 8/11 Simmental females sold to \$6,000 & averaged \$4,875.



QUEENSLAND BULL SALE (QLD) JULY 31ST

Top Price: \$30,000 average of \$12,516

109/121 bulls sold to \$30,000 for Lot 83 Glenanna Skippy and averaged \$10,394.

WOONALLEE TAMWORTH SIMMENTAL SALE (NSW) - AUGUST 2ND

Top Price: \$55,000 average of \$11,734

27/27 Black Simmental bulls sold for an Australian Black Simmental record of \$55,000 (Lot 15. Woonallee Toronto T274 to GB livestock & ABS Global - Australia Beef) and averaged \$13,296.

23/23 SimAngus Bulls sold to a top price of \$14,000 twice to average \$10,173.

SALE RESULTS: A SNEAK PEEK

MALA-DAKI, JNI AND LUCKY CLOVER SIMMENTAL SALE (NSW) - AUGUST 3RD

Top Price: \$14,000

Top priced bull sold to \$14,000 for lot 3, MD Shock N Awe S41 by a Qld buyer. Top priced female went to Lot 34, MD Elke T69 for \$6,500 and bought by Heart and Spade Simmentals, NSW.



MD Shock N Awe

HOBBS LIVESTOCK INAUGURAL BULL SALE (NSW) - AUGUST 17TH

Top Price: \$14,000 average of \$7,546

15/18 Simmental bulls sold to \$14,000 for Lot 3, Hobbs Livestock Take A Walk With Me T005 and averaged \$7,546.



Hobbs Livestock Take A Walk With Me

FAIRVIEW BLACK SIMMENTALS SALE (QLD) - AUGUST 17TH

Top Price: \$19,000 average \$8,174

46/46 bulls sold to \$19,500 for Lot 2, Fairview Swagger S20 and averaged \$8,174.



Fairview Swagger

LUCRANA SIMMENTAL/SIMBRAH BULL SALE (QLD) - AUGUST 18TH

Top Price: \$24,000 average of \$12,451

62/62 bulls sold to a top price of \$24,000 to average \$12,451 with the top price bull being purchased by Casa Toro Stud principals Scott and Claire York, Jackson for \$24,000.



Lucrana Solomon

TICOBA & SAVANNAH SIMBRAH & SIMMENTAL SALE (QLD) - AUGUST 25TH

Top Price: \$20,000 twice average \$8,679

73/81 bulls sold to a top of \$20,000 twice and averaged of \$8,679.



Tycoba S030

CLAY GULLY INVITATIONAL BULL SALE (QLD) - AUGUST 28TH

Top Price: \$20,000 average of \$7,412

63 of 81 Simmental bulls sold to a top of \$20,000 for Lot 2, Clay Gully Savabel and averaged \$8,825 and 2 of 14 Simbrah bulls averaged \$6,000.



Clay Gully Savabel

SALE RESULTS: A SNEAK PEEK



Bonnydale Rawhide T319

BONNYDALE Q BULL SALE (QLD) – AUGUST 30TH

Top Price: \$14,000 average \$7,512

43/74 bulls sold to a top of \$14,000 for Lot Bonnydale Rawhide T319 selling to Hacon and Sons of Cloncurry and averaged \$7,512.



Elite Sledgehammer

ELITE CATTLE CO'S BULL SALE (QLD) – AUGUST 31ST

Top Price: \$30,000 (twice) average \$11,348

46/49 bulls sold to \$30,000 twice for Lot 4, pictured, Elite Sledgehammer to Eden Hills Simbrah and Simmental and Lot 23. Elite Sledgehammer to Karragarra Simmentals and averaged \$11,348.



Casa Toro Supercharger

CASA TORO'S INVITATIONAL SALE (QLD) – SEPTEMBER 8TH

Top Price: \$20,000 average \$10,512

44/44 bulls sold to \$20,000 for Lot 3, Casa Toro Supercharger S114 to I & J Donaldson, Biloela QLD and averaged \$10,512.



Daraabah Tycoon

GOLDEN OPPORTUNITY CATTLE SALE (NSW) – SEPTEMBER 12TH

Top Price: \$10,000 average \$5,530

15/17 registered Simmental bulls sold to a top of \$10,000 for Lot 5- Daraabah Tycoon (P) to Proctor Livestock and averaged \$5,530. 8/10 Simmental females sold to a top of \$8,000 for Lot 58- Daraabah Thelma to Glenanna Simmentals and averaged \$4,000.



Wormbete Thomahawk

WORMBETE (NSW) - SEPTEMBER 13TH

Top Price: \$13,000 (twice) average \$8,177

30/41 bulls sold to \$13,000 twice for Lot 5, Wormbete Thomahawk T32 and Lot 8, Wormbete Torretto T14 and averaged \$8,177. 9/12 heifers sold to \$8,000 for Lot 50, Wormbete Beatrix T88 and averaged \$5,156.



VC Lucy T054

VALLEY CREEK (NSW) – SEPTEMBER 15TH

Top Price: \$12,000 average \$8,100

10/17 Bulls sold to \$12,000 twice, Lot 6 VC The General and Lot 7 VC Tickets and averaged \$8,100. 13/15 Heifers sold to \$17,000 twice, Lot 26 VC Lucy T054 and Lot 27 VC Strike T050 and averaged \$10,615.

SALE RESULTS: A SNEAK PEEK

ST PAULS (NSW) - SEPTEMBER 18TH

Top Price: \$11,000

3 bulls sold to a top of \$6,500 for Lot 8 and averaged \$5,667. Cows 10/12 sold to a top of \$11,000 for Lot 22 (pictured) and averaged \$5,800. Heifers 13/16 sold to a top of \$8,500 for Lot 39 and averaged \$4,275. Embryos 4/6 sold to a top of \$1,000/Embryo for Lot 53 and averaged \$837.50/ Embryo. Semen 2/5 lots sold to a top of \$140/straw for Lot 54 and averaged \$104/ straw.



St Pauls Nuk N426 Pear R412

SOUTHERN BLACK SIMMENTALS (NSW) - SEPTEMBER 22ND

Top Price: \$5,000

Bulls topped at \$5,000 twice and females topped at \$6,000.



SBS Titan T54

MELDON PARK SIMMENTAL SALE WITH INVITED VENDORS KBV SIMMENTALS & NAVILLUS PARK SIMMENTALS (QLD) - SEPTEMBER 26TH

Top Price: \$28,000 average of \$9,000

65/73 bulls sold a top of \$28,000 Lot 28, KBV Sampson and averaged \$9,000. Meldon park sold 55 bulls for an average of \$8,545 with a top price of \$19,000 Lot 20, Meldon Park S182 to Aileen Hobson and daughter Sue.



KBV Sampson

BARCOLDINE MULTI BREED SALE (QLD) - SEPTEMBER 29TH

Top Price: \$11,000 average 6,833

12/17 bulls sold to a top of \$11,000 for Lot 45, Summa Saint S75 and averaged \$6,833.



Summa Saint S75

KARRAGARRA BULL SALE (QLD) - OCTOBER 9TH

Top Price: \$24,000 average \$11,672

64/64 bulls sold to \$24,000 for Lot 34. Karragarra Sensation S145 to Last Pastoral Co, Biggenden QLD and averaged \$11,672.



Karragarra Sensation

**EXCITING
NEWS**

**ON SALE
15th
OCTOBER**

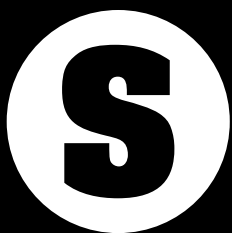
LIMITED EDITION BELT BUCKLE RAFFLE



Simmental Australia is offering our members a unique opportunity to acquire an anniversary belt buckle.

These coveted items have previously been auctioned off at youth and state events, and now, we have only a limited few remaining.

Don't miss your chance to own one!



Simmental
AUSTRALIA

Ticket prices:
\$5 each
\$10 for 2 tickets
\$15 for 3 tickets
\$20 for 4 tickets
\$25 for 5 tickets
\$30 for 6 tickets
\$50 for 10 tickets

The raffle will go live on RaffleLink from 15th October and will be drawn on 16th December.





Simmental
AUSTRALIA

TOP 25 ACCREDITED SIRES

for 2022 born calves

IDENT	NAME	TOTAL COUNT	MALE	FEMALE	NAT	AI
WEEPN141	WOONALLEE NOTICE N141	130	54	76	124	6
MBBPN073	BONNYDALE NUKARA	104	52	52	69	35
LSNPP092	LONE STATION PABLO	86	47	39	86	0
ZKVPL006	K.B.V. LEGACY	82	42	40	82	0
BXHPM211	STREVN PARK DANNY M211	82	1	81	79	3
IMUPN202	WS PROCLAMATION E202	74	31	43	0	74
IMU3N7382	GIBBS 7382 BROAD RANGE	71	37	34	2	69
JRVPP003	JARRAVAL PHARAOH	63	34	29	62	1
ZKVPP004	K.B.V. PROSECUTOR	62	29	33	61	1
ZRXPP044	COUNTRY STYLE POWERADE	53	23	30	53	0
WEEPQ085	WOONALLEE Q085	53	29	24	53	0
LGP1Q129	WOMBRAMURRA Q129	50	25	25	50	0
AJYPQ150	WILLANDRA QUENTIN	49	29	20	49	0
JJM3Q053	LUCRANA QUEENSLANDER	47	25	22	47	0
MBBPR084	BONNYDALE AUGUSTUS R84	47	29	18	47	0
IMU3N283	KBHR HIGH ROAD E283	46	21	25	0	46
WEEP094	WOONALLEE NIGHTCAP N94	45	20	25	45	0
AJYPP164	WILLANDRA PANAMA	44	23	21	44	0
BXNPN035	TENNYSONVALE NITRATE	43	16	27	43	0
WEEP118	WOONALLEE MAMBA	43	20	23	43	0
LCSPQ202	LANCASTER MAGNUM Q202	41	22	19	41	0
IMU3Q069	LBRS GENESIS G69	39	19	20	0	39
BRDPL728	CLAY GULLY LIMITED EDITION	38	16	22	38	0
JJMPN434	LUCRANA CLUB KING N434	38	0	38	38	0
ZMUPL048	LAVARTA LAST MAN STANDING	37	16	21	37	0



NEW ACCREDITED AI SIRES

in 2023

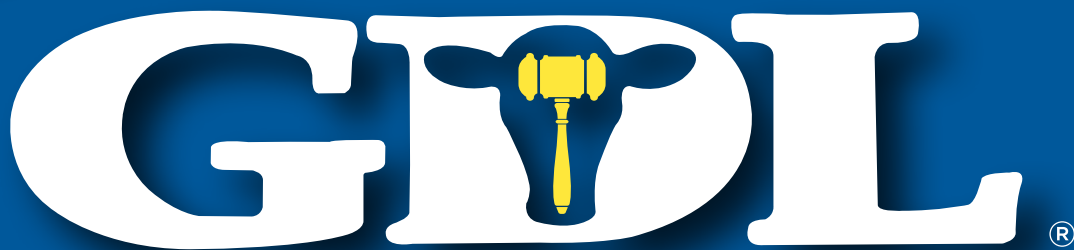
IDENT	NAME	YOB	REGISTER	APPLICANT
KKCPP004	DOUBLE K PICK UP LINE	2018	Black	Camelock Rural
IMCPR9212	R PLUS REDDINGTON 0143H	2020	Simmental	VC
IMUPM644	FSS POLLED HENDRIX	2016	Simm/FullBlood	Tugulawa
IMCPH3081	SOUTHSEVEN MR ADONIS 96Z	2012	Simm/FullBlood	Mubarn
ECCPP134	ELITE PLATINUM	2018	Black	Elite Cattle Co
AMOPQ300	YERWAL EST STATE OF WAR Q300	2019	Black	Elite Cattle Co
WEE3Q476	WOONALLEE MISSILE Q476	2019	Black	Elite Cattle Co
ECCPP127	ELITE POWERPLAY	2018	Black	Elite Cattle Co
IMU1Q263G	TJ ARROWHEAD 263G	2019	Black	ABS Australia
IMU1J285	GW WINDFALL 285J	2021	Black	ABS Australia
IMU1P608F	CLRS FREIGHT TRAIN 608F	2018	Black	ABS Australia
IMU3X3275	OMF EPIC E27	2017	Black	ST Genetics
HAMPP034+94	KELLY VIEW PAUL	1994	Simmental	Glenview Del
IMU1R203	HOOK'S HEADLINE 203H	2020	Black	Genetics Australia
IMU3Q9114	GIBBS 9114G ESSENTIAL	2019	Black	Agri-Gene
IMCPQ9855	WKF FULLY LOADED 1G	2019	Black	GB Livestock
IMNPL691	KERRAH DICTATOR D691	2015	Simmental	Lucrana
ZEUPM001	GRANGEBURN MASTERS PRIDE	2016	Simm/FullBlood	Grangeburn
TVAPR010	TRINITY VALE RADAR LOVE (PP) (AI)	2020	Simmental	Trinity Vale
JJMPR014	LUCRANA RADAR	2020	Simmental	VC
IMU1Q937	EGL GREAT WESTERN 86G	2019	Black	Semex Pty Ltd
SXPPK003	SIXPENCE PARK KALECHI	2014	Black	Sixpence Park
GBLPS106	GB LIVESTOCK SPRING LOADED	2021	Black	St Paul's Genetics
IMCPR2238	CINDERELLA MAN	2020	Simmental	VC
TVAPS114	TRINITY VALE STANDING OVATION	2021	Simmental	Trinity Vale
IMUPS0715	SOT ACTIVE WINSOME J715E	2021	Simm/FullBlood	Simmentals of Texas
IMUPS0713	SOT JUDSON J713	2021	Simm/FullBlood	Simmentals of Texas
IMCPS92J	MADER WALK THE LINE	2021	Simmental	VC
IMCPJ003	DOUBLE BAR D JAGGED ICE	2013	Simm/Fullblood	Grangeburn

TOP 10 DONOR DAMS

for 2022 born calves

DAM IDENT	DAM NAME	YOB	PROGENY	OWNER
SPGPM412	ST PAULS CC G430 PEAR M412	2016	21	SPG
WEE2P452	WOONALLEE CAPTAIN P452	2018	16	GTA
AJYPE159	WILLANDRA OLIVE E159	2009	16	NGS
SPGPM415	ST PAULS CC D270 PEAR M415	2016	12	SPG
LCSPJ114	LANCASTER ERICA J114	2013	12	JRV
SHLPL005	HOBBS LIVESTOCK KEEPSAKE L5	2015	11	SHL
RWSPN023	SETTLER NICKY	2017	10	RWS
GBAPJ002	ALLIANCE MASTERPIECE J2	2013	10	ZQJ
JRVPN031	JARRAVAL POLLYWAFFLE N031	2017	9	JRV
SHLPP005	HOBBS LIVESTOCK RED PARTY GIRL	2018	8	SHL
LCSPJ357	LANCASTER POPPY J357	2013	8	ZEU
WEBPF516	WEBB HUMMER F516	2010	8	WEE

**Big Enough To Count,
Small Enough To Care..**



A NUTRIEN AG SOLUTIONS PARTNER

STUD SALES

Australia

LIVE AUCTIONS & ONLINE SALES
BULLS, FEMALES & GENETICS

PRIVATE SALES, COMMERCIAL SALES, FEEDLOT SALES



Mark Duthie
0448 016 950

Peter Brazier
0407 525 983

Josh Heck
0409 732 676

Georgie Connor
0428 347 550

Corey Evans
0427 233 999

Simon Kinbacher
0427 735 620

www.gdlrural.com.au

MEMBERS' DIRECTORY

LIFE MEMBERS

BILL ALMOND

PO BOX 58
WAGGA WAGGA NSW 2650
0458 366 660
BWH

TOM BAKER

PMB 52
MILLICENT SA 5280
08 8734 3031
tbaker@bakergroup.com.au
www.woonalleesimmentals.com
WEE

CHARLES COWCHER

246 KENNEDY ROAD
WILLIAMS WA 6391
08 9885 6058
ccowcher@westnet.com.au
AJZ

GARRY GILLET

LARA-LEIGH SIMMENTALS
38 FOREST ROAD SOUTH
LARA LAKE VIC 3212
0412 017 660
garryg@aapt.net.au
GGJ

DR HANS GRASER

79 AMAROO ROAD
INVERGOWRIE NSW 2350
02 67 752035
hu.graser@bigpond.com
OHG

GINA RYAN

GLENVIEW DEL SIMMENTALS
67 JOYCES ROAD
GLENBURN VIC 3717
03 5797 8334
RYA

PETER SPEERS

236/116 KARALTA ROAD
ERINA NSW 2250
0408 203 006
pspeers@hotmail.com
FSB

AUDREY WEIGHTMAN

TOPWEIGHT GRAZING CO
284 BULLANT DRIVE
FOREST GROVE 6286
T: 08 9757 2058
M: 0428 572 058
E: topweight@westnet.com.au
TOP

PETER WENN

PINAROO HILLS SIMMENTAL STUD
PO BOX 30
BUNYIP VIC 3815
0417 317 830 (Peter)
pinarohills@hotmail.com
WCK

FULL MEMBERS

NEW SOUTH WALES

JOHN & CORRINA ADAMS

89 CARRINGTON ROAD
LONDONDERRY NSW 2753
02 4572 6590
corrinaadams@bigpond.com
CMA

LUKE & NATASHA ADAMS

193 SPINKS ROAD
GLOSSODIA NSW 2756
0400 834 619 TASH
lnalivestock@outlook.com.au
LNA

JESSICA ADAMS

89 CARRINGTON ROAD
LONDONDERRY NSW 2753
02 4572 6590
corrinaadams@bigpond.com
ZQJ

LINDESAY & JANET ALLAN

DIGBY
368 DIGBY LANE
CURLEWIS NSW 2381
02 6744 1122
clayfieldstud@gmail.com
LJA

ELAINE ALMOND

PO BOX 890
WAGGA WAGGA NSW 2650
0406 078 091
bealmond@bigpond.com
FET

TJ & S ATKINS

YATTABY
CORELLA ROAD
MANILLA NSW 2346
02 6785 1486
yattaby@bigpond.com
TJS

NICHOLAS AZZOPARDI

2 NELLORE PLACE
NORTH NOWRA NSW 2541
0423 417 602
nick_azza@hotmail.com
ZNW

MITCH BAKER

PH PARTNERSHIP
PINE HILLS
265 PINE HILLS ROAD
WOOLBROOK NSW 2354
0407 255 976
mitchbaker2011@hotmail.com
PHW

IAN & CHERYL BALDRY

IVANHOE
297 HILLSIDE LANE
ILLABO NSW 2590
02 6924 7215
tennysonvale@hotmail.com
www.tennysonvale.com.au
BXN

IAN BARNARD

68 CAPPER ST
TUMUT NSW 2720
02 694 713 69
ianpennyb@gmail.com
IBS

BRENDEN BATES

135 HALLS ROAD
DARTBROOK NSW 2336
0423 145 605
brendenbates@gmail.com
BBW

DARREN & LISA BEAUMONT

595 PEAKS ROAD
DORRIGO NSW 2453
02 6657 4124
dj.beaumont@bigpond.com
LOW

BENALLA STUD GRAZING

MIRANEE
312 MIRANEE ROAD
GUNDY NSW 2337
07 4741 1547
benallastud@gmail.com
DNS

JESSE, JACOB & GREG BEZWARCHNY

111 HOLDENS LANE
HANNAM VALE NSW 2443
02 6556 7692
jesse.bezwarchny@yahoo.com.au
ZJJ

GRAHAM AND JENNIFER BULLEN

880 TOPS ROAD
LOGIE
NOWENDOC NSW 2354
0429 231 287
jennyabullen@gmail.com
GJB

GRANT BULLOCH

115 BLACK SALLEE LANE
BRAIDWOOD NSW 2622
0477 268 935
gblivestock21@gmail.com
www.gblivestock.com
GBL

IR & TL CAREY

TLC BLACK SIMMENTALS
3374 MURRINGO ROAD
YOUNG NSW 2594
0412 484 614
carey_pastoral@bigpond.com
TLC

SIOBHAN & WAYNE CATLING

326 DOYLES CK ROAD
DOYLES CREEK NSW 2330
0412 963 454
standgate@icloud.com
SWC

PETER & CHARMAINE COOK

BARANA
COOLAH NSW 2843
02 6377 5233
barana@bigpond.com
www.baranasimmentals.com
PTC

BILL CORNELL

FW & BS CORNELL
31 THE GROVE
THURGOONA NSW 2640
0428 293 498
billcornell@bigpond.com
SPG

SALLY COULTON

422 FLOODS TANK ROAD
GRAVESEND NSW 2401
0438 276 399
basfarming@bigpond.com
COU

BRIAN CULLIS, CAMERON ELLIS & ALISON SMITH

PO BOX 107
BERMAGUI NSW 2546
02 6947 9448
bcullis@uow.edu.au
ZTT

JOHN & JACK DAWSON

220 STRONGS ROAD
JASPERS BRUSH NSW 2535
02 4448 6040
jondele@bigpond.com
DCR

WR & M FITZGERALD

ALKOOMIE
678 CRAWNEY ROAD
NUNDLE NSW 2340
0468 938 767
williamfitzgerald71@yahoo.com
KUN

ROBERT & MARILYN FLANNERY

3239 CLARENCE TOWN ROAD
BROOKFIELD NSW 2420
02 4996 4212
bonhomie@clearmail.com.au
FLA

GOLDSTAR GENETICS

393 OLD DUBBO ROAD
COONAMBLE NSW 2829
0488 595 992
james.hannah@goldstargenetics.com.au
GOL

EMILY GOUGH

360 UPPER WARRELL CK ROAD
MACKSVILLE NSW 2447
02 6569 3182
goughinc@bigpond.net.au
ZGE

TOM AND ALICE GRANLEESE

C/- JIZZY GENETICS
107 CASSONS CREEK ROAD
LAVADIA NSW 2462
0432 339 008
tgranleese@gmail.com
GTA

SIMON HALE & IAN CARROLL

4 ROTHERWOOD ROAD
LAKE BATHURST NSW 2580
0438 042 405
simon.hale@bigpond.com
SBS

J & M HANNAH

259 MERRYGOEN ROAD
MERRYGOEN NSW 2831
0488 595 992
jmhannah7219@gmail.com
<https://www.facebook.com/glenanna>
MMM

GERRY AND SANDRA HANNING

PO BOX 6014
GOULBURN NORTH NSW 2580
0493 284 319
gshanning@me.com
GRH

JASON HARRINGTON

3055 BUNNAN ROAD
BUNNAN NSW 2337
0460 716 153
jcrural@outlook.com
JCR

ADAM HARTLEY

PO BOX 1111
CAMDEN NSW 2570
admin@axom.com.au
LEY

DA & AT HOBBS

143 WHITE FLAT ROAD
MOLONG NSW 2866
02 6366 8378
dahobbs@bigpond.com
HOB

STUART & KYLIE HOBBS

ROSEHILL
33 BURGESS ROAD
GARRA NSW 2866
02 6366 8378
hobbslivestock17@gmail.com
SHL

JOHN & NICOLE HOPKINS

ALLAWAH
340 ALLAWAH ROAD
ILLABO NSW 2590
02 6924 5455
hopkinspastoral@bigpond.com
www.wormbetesimmentals.com.au
AGO

CHRIS & ASHLEIGH ICKINGER

HERLO PARK SIMMENTALS
178 KINGSHILL ROAD
MULGOA NSW 2745
0434 216 525
billkimash@hotmail.com
ZKX

JENNIFER IMPEY

TURRAMURRA
1137 MIDDLEBROOK ROAD
TAMWORTH NSW 2340
0437 997 974
jenimpey14@gmail.com
JNI

JASON & JACQUELINE IMPEY

TURRAMURRA
1137 MIDDLEBROOK ROAD
TAMWORTH NSW 2340
0428 320 606
simmental@mala-daki.com
www.maladakisimmentals.com
ZIJ

JESSICA IMPEY & DAVID MCRAE

TURRAMURRA
1137 MIDDLEBROOK ROAD
TAMWORTH NSW 2340
0437 369 421
lcsimmentals@gmail.com
ZJM

ALLAN JARRETT

ALLAN ALYSON & LACHLAN JARRETT
45 GREENPIGEON ROAD
KYOGLE NSW 2474
ALLAN: 0427 331 204
jarravalepastoral@bigpond.com
jarravalesimmentals.wix.com
JRV

KNOX FARMS

JEFF KNOX
PO BOX 8
CROOKWELL NSW 2583
0414 611 414
<https://knoxfarmssimmentalfleck-vieh.com/>
NOX

SANDRA LANG-SCHILG

BYWONG PARK
URANA ROAD
BURRUMBUTTOCK NSW 2642
02 6029 3275
sandra.schilg@bigpond.com
BYW

SHANNON LAWLOR

AUSBRED
2 TIERNEY ROAD
KURMOND NSW 2757
02 4573 1052
slawlor@iahp.com.au
ZLX

JESSICA & MITCHELL LITTLER

600 BOOMEY LANE
BOOMEY NSW 2866
0466 032 389
j.hobbs_07@hotmail.com
SLP

BRIONY LOOKER

DUNOON
4075 BOOROLONG ROAD
ARMIDALE NSW 2350
02 6732 2254
briony_looker@yahoo.com
ZOB

EG & SG MARTIN

1908 RHYANNA ROAD
MYRTLEVILLE NSW 2580
0427 622 404
0427 622 404
GSM

GL & LR MARTIN

SIXPENCE PARK
NEW ENGLAND HIGHWAY
TENTERFIELD NSW 2372
02 6736 2964
sixpencepark@live.com.au
SXP

B W & M G MCCOLL

7R JONES CREEK ROAD
DUBBO NSW 2830
0429 750 590
bruce@daraabah.com.au
www.daraabah.com.au
DBH

GORDON & DEBRA MCQUEEN

465 LYNCHES CREEK ROAD
KYOGLE NSW 2474
0428 588 521
gkanddmqueen@bigpond.com
GDM

AMY MCRAE

PO BOX 17
BOWRAVILLE NSW 2449
0438 810 977
mjm-86@outlook.com
BEL

NATHAN MIDDLEBROOK

WIRRAWIRRA
484 CRAVEN CREEK
VIA GLOUCESTER NSW 2422
02 6558 7525
nmiddlebrook@hotmail.com
CCK

TAYLA MILLER

CARINYA
NEW ENGLAND HIGHWAY
PARKVILLE NSW 2337
taylamiller161@hotmail.com
TAM

ROSS MITCHELL

ILLAWONG
660 HALCROWS ROAD
CATTAI NSW 2756
02 4572 8417
rmitchell60@bigpond.com
AYR

MKR FAMILY PARTNERSHIP
C/- KATIE TULLY
9530 SUMMERLAND WAY
SHANNON BROOK NSW 2470
0477 862 904
kamjrobinson@gmail.com
MKR

KAYE MOBBS & TRENT MINNETT
MONJEWEL
1730 DELUNGRA ROAD
BINGARA NSW 2404
0499 996 491
kayeminnett@gmail.com
KTM

STUART & SAMANTHA MOECK
SYLVIA VALE
681 SYLVIA VALE ROAD
BINDA NSW 2583
0419 465 242
vcsimmentals@yahoo.com.au
ZMJ

MADISON & SANDY MORGAN
COOLIBAH
BONNIEVIEW
297 OLD COAST RD
DORRIGO NSW 2453
02 6779 1107
coolibah07@bigpond.com
ZVV

KEITH & HELEN MORN
PACIFIC HIGHWAY 2027
CLYBUCCA NSW 2440
02 6565 0173
MKH

PAUL MUNRO
1 AUCKRAM ROAD
MCKEES HILL NSW 2480
0428 601 568
Paul.R.Munro@team.telstra.com
BOJ

ADRIAN O'BRIEN
AVONLYNN
MERRI MERIC RD
HENTY NSW 2658
0428 293 604
adrianobrien@agnvet.com.au
LVB

JESSICA O'CONNELL
PO BOX 27
BERRY NSW 2535
02 4464 2702
ZKG

PAULA PALMER
WONGALEA
CASSILIS NSW 2329
02 6376 4215
palmsrox@gmail.com
PPA

COURTNEY PALMER
WARRAHDONGA
COOBA BULGA ROAD
CASSILIS NSW 2329
02 6376 4215
courtney_palmer93@hotmail.com
ZWC

DARRYL & CHARMAINE PATTERSON
290 BACK CREEK ROAD
BENTLEY NSW 2480
0409 785 104
epiclass@hotmail.com
GDC
RAY PEPPER
441B COMERONG ISLAND ROAD
NUMBAA NSW 2540
0412 817 740
brentpepper@y7mail.com
PEP

PAUL PHILLIPS
1367 JERRARA ROAD
BUNGONIA NSW 2580
0400 701 125
paulphillips217@bigpond.com
CFS

TAYLAH PHILLIS
267 SMITHS LANE
SPRINGDALE NSW 2666
0400 164 280
taylahp97@outlook.com
POA

BRUCE & GEOFF POWELL
YALLAMBEE
MURRINGO NSW 2586
02 6384 6378
gs_powell@bigpond.com
BHU

NEVILLE & GAIL RAY
T/A RAY BROS
LEAWOOD PARK 8523
TUMBARUMBA ROAD
WAGGA WAGGA NSW 2650
02 6922 1638
gailray4@bigpond.com
NGR

ALEX ROBSON
GLISTER PTY LTD
ROSEVALE
ATTUNGA NSW 2345
02 6761 2686
strathleigh2@bigpond.com
www.strathleigh.com
STR

JAMIE SMITH & AMY MARTIN
763 UPPER MOLE RIVER RD
MOLE RIVER NSW 2372
0437 282 758
wynella@outlook.com
JSM

STGENETICS AUSTRALIA PTY LTD
UNIT 4/48 CONRAD PLACE
LAVINGTON NSW 2641
02 6040 4373
cbourke@stgen.com
3SG

TAFE NSW RICHMOND COLLEGE
CORNER BLACKTOWN ROAD AND
CAMPUS DRIVE
RICHMOND NSW 2753
02 7921 7475
rebecca.coventry@tafensw.edu.au
TFE

JIM TICKLE
PO BOX 5
DUNGOG NSW 2420
02 4992 1980
tickles@activ8.net.au
JTK

COLIN & LINETTE TINK
81R BURRAWAY ROAD
DUBBO NSW 2830
0408 638 102
btbrahman@gmail.com
BCT

JOEL TRIM & COURTNEY NEWLANDS
160 LEES ROAD
DURI NSW 2344
0476 639 925 COURTNEY
thewilgassimmentals@outlook.com
HRL

JOEL TRIM & COURTNEY NEWLANDS
160 LEES ROAD
DURI NSW 2344
0476 639 925 Courtney
thewilgassimmentals@outlook.com
JCT

KIM USHER
415 BOOROLONG ROAD
ARMIDALE NSW 2350
0408 073 427
kusher@une.edu.au
JSK

VMC FAMILY TRUST
DP: 12323 HUME HIGHWAY
SUTTON FOREST NSW 2577
0424 426 224
anthony@vmccorp.com.au
HFS

ALANA WADE & KAIN RAFFERTY
RAFFERTY PASTORAL CO
106 RAYDON LANE
STUBBO NSW 2852
02 4573 1979
raffertypastoral@outlook.com
RPC

TREVOR & TRACEY WELLS
RIVERBROOK
348 GLENDON LANE
GLENDON NSW 2330
02 6574 1392
trevwells@gmail.com
TTW

RICHARD WILKINSON
1260 THE NORTHERN ROAD
BRINGELLY NSW 2556
0413 581 098
rjw-settler@outlook.com.au
RWS

GEORGE WRAGGE
WALLINGTON ROAD
SCONE NSW 2337
02 6545 0405
tullayr@gmail.com
www.tullayr.com.au
ZGW TULLAYR

QUEENSLAND

TW ANDERSEN & BR EVANS
TRINITY VALE
PO BOX 956
KINGAROO QLD 4610
0407 296 626
trinityvale@yahoo.com.au
TVA

APPLETON CATTLE COMPANY PTY LTD
YARMINA STATION
CHARTERS TOWERS QLD 4820
07 4983 5287
zabby@appletoncattleco.com.au
ACC

AUGUST BECKMANN
1109 MOUNT KENT BOUNDARY ROAD
FELTON QLD 4358
0429 421 546
cliffy82@hotmail.com
AFB

INTROVIGNE GRAZING CO & JACOB BERGHOFER
1343 BARAMBA ROAD
MOFFATDALE QLD 4605
0429 622 809 (EMMA)
springvale2@bigpond.com
http://www.bonnydalesimmentals.com/
BQD

EMMA PATTERSON & JAKE BERGHOFER
1343 BARAMBA ROAD
MOFFATDALE QLD 4605
07 4655 4837
springvale2@bigpond.com
SVE

JO BERRIE
325 HINDS ROAD
BAN BAN SPRINGS QLD 4625
0400 750 041
joanne.mather@health.qld.gov.au
JOB

DAVID BLAKE
161 TED MENGEL ROAD
NOBBY QLD 4360
0418 878 028
shiiloh@outlook.com
DAB

PAUL & LESLEY BLIGH
1172 ALBERTA ROAD
BARALABA QLD 4702
0473 539 230
BLI

DOUG & JAN BRADSHAW

2131 RED RANGE ROAD
WANDOAN QLD 4419
07 4627 8133
bluedogsimmentals@hotmail.com
www.bluedogsimmentals.com.au
DOG

CAMELOCK RURAL

CARELLA
AUGATHELLA QLD 4477
07 4654 9157
bec@camelockrural.com.au
CRT

HEIDI CHRISTIE

1878 MOUNT STUART ROAD
MOUNT STUART QLD 4717
0228 417 008
heidichristie@outlook.com
SHC

RAY CLEWS

1789 ROSSMOYA ROAD
ROSSMOYA QLD 4702
07 4934 3284
clewsfarming@bigpond.com
RAC

JAMES COCHRANE

KENDALL PARK
172 CARLSON ROAD
COLES CREEK QLD 4570
0438 843 166
kendall.park.simmentals@gmail.com
SKP

MITCHELL COLE

BULLOCK SWAMP
10 ERIKDEN ROAD
RAVENSHOE QLD 4888
07 4097 6615
macole676@gmail.com
LAP

TANIA COLEMAN

FAIRWAYS
20 MASTERS LANE
TOOGOOLOWAH QLD 4313
07 5423 1309
lmtj2008@bigpond.com
TAN

KARINA & KARLY CRISP

208 LODE CREEK ROAD
SUGARLOAF
VIA STANTHORPE QLD 4380
0417 197 280
kardelpark@gmail.com
KKC

TRACEY CROUCH & KEVIN PERKINS

CANNON DEE
M/S 1448
CHINCHILLA QLD 4413
07 4665 5119
cannon.dee@bigpond.com
KNT

JOHN & TARA DUMMA

EMOH RUO
MAY DOWNS-CARFAX ROAD
MIDDLEMOUNT QLD 4746
07 4987 3034
dumma10@bigpond.com
JTD

EDGEWATER FARMING CO PTY LTD

C/- RACHEL BLACK
54 DARLEY CROSSING ROAD
KUNIOON QLD 4615
07 4164 7182
mandrblack@bigpond.com
EWC

ELITE CATTLE CO

MURWOLLOCK
MEANDARRA QLD 4422
0433 333 805
info@elitecattleco.com.au
www.elitecattleco.com.au
ECC

MEGAN FOGG

10 BLACKJACK CREEK RD
TOOGOOLOWAH QLD 4313
0427 200 689
mgloag1@hotmail.com
ZGO

DAVID & THERESA FRENCH

MALLARDALE
MS 181
PITTSWORTH QLD 4356
07 4693 1556
dtfrench@bigpond.com
www.mallardalepollsimmentals.com
DTF

SAVANNAH GOODY

904 MONAL ROAD
MONTQ QLD 4630
0457 226 566
savannahgoody01@gmail.com
ZWK

GOWRIE SIMMENTALS

ALMA PO BOX 78
BELL QLD 4408
0458 888 976
gowriesimmentals@gmail.com
MRA

CRAIG & TRUDY HAMPSON

T/A HAMPSON GRAZING
34 SCRUBBY MOUNTAIN ROAD
MONTQ QLD 4630
07 4167 8137
ralphy@skymesh.com.au
CTH

HILLVIEW CATTLE CO

PO BOX 1
CLERMONT QLD 4721
0429 706 720
snfinger@bigpond.com
SNF

DAVID & DIANNE HOOD

KIRKTON
RAVENSWOOD QLD 4816
0427 703 320
diannehood@bigpond.com
DDJ

TONY HORVATH

FAIRVIEW
461 REDFORD ROAD
MUNGALLALA QLD 4467
0408 612 666
fairviewblacksimmentals@gmail.com
www.fairviewblacksimmentals.com.au
FVS

ADAM & LAURA HUMPHREY

14784 TUMBAR ROAD
JERICHO QLD 4728
0448 362 911
ahumphrey93@hotmail.com
ANL

JUSTIN & CLARE HUMPHREYS

COLROY
2007 WASHPOOL ROAD
INJUNE QLD 4454
0428 261 163
highland73@bigpond.com
JCH

CLIFFORD JENSEN

15 WIXONS ROAD
LAKESIDE QLD 4621
07 4127 1153
honeywood@activ8.net.au
4CD

JASON JOHNSTON

30 STAVE ROAD
OBI OBI QLD 4574
0427 460 161
craigleadroughtmasters@hotmail.com
NVP

TONY & TAJ JONES

LOU LOU PARK
JERICHO QLD 4728
07 4651 0588
louloupark1@gmail.com
TTL

SCOTT & TAWNIE KELEHER

245 WYREEMA-ATHOL ROAD
TOOWOOMBA QLD 4350
0421 659 268
scott.keleher@bigpond.com
STK

MATT KIRK

TICOBA STATION
MUNDUBBERA QLD 4626
0427 617 334
lachlanstephaniekirk@outlook.com
TYC

DALLAS KROPP

PO BOX 18313
CLIFFORD GARDENS QLD 4350
0439 428 823
dallas@daltransbulkhaulage.com.au
DGK

ROB & VIV LAYCOCK

CLAY GULLY SIMMENTALS
KIPPER
VIA ESK QLD 4312
07 5424 1207
www.claygully.com
BRD

GARETH LAYCOCK

28 BROUGH COURT
ESK QLD 4312
0430 719 991
biarravalley@gmail.com
www.claygully.com
ZGK

ABE & AMY LEOV

603 SPRING CREEK ROAD
SPRING CREEK QLD 4361
0425 615 414
aaleovco@hotmail.com
DAL

DON & GAIL LOUIS

NANGUR SIMMENTALS
5781 BURNETT HWY
GOOMERI QLD 4601
07 4168 4241
nangursimmentals@outlook.com
LOD

MATTHEW & TANIA LUKRITZ

17 COAL CREEK ROAD
ESK QLD 4312
07 5424 1757
orangevilla1@bigpond.com
ZOV

MALANDA STATE HIGH SCHOOL

AG DEPT
PO BO 1020
MALANDA QLD 4885
07 4096 7111
dkilp9@eq.edu.au
MAL

STEVEN MANWILL

UNIT 1109 19 DESHON STREET
WOOLLOONGABBA QLD 4102
0416 229 171
smanwill@pharosinvestments.com.au
www.lonestation.com.au
LSN

ANDREW MOORE

LAGOON FLAT
RIVERTON ROAD
TEXAS QLD 4385
0428 535 154
andrew.moorefarms@bigpond.com
www.lucrana.com.au
JJM

JANET NEWLANDS

107 HENDRIE ROAD
UPPER PILTON QLD 4361
0427 931 927
PHD

KM PARKER & MJ PEARCE

114 DEE ST
KOONGAL QLD 4716
0476 693 449
jamaccattleco@gmail.com
JAA

JOHN & CAROLE & JULIE POCKOCK

68 CLARENDON ROAD
LOWOOD QLD 4311
07 5426 1329
jc.pockock@bigpond.com
JCP

IVAN & HELEN PRICE

406 NOORINDOO ROAD
SURAT QLD 4417
0428 265 031
moongoolcharolais@bigpond.com.au
DP2

PETER & TONI RAUCHLE

SPRINGSIDE SIMMENTALS
357 IRONGATE ROAD
SPRINGSIDE QLD 4356
07 4693 8282
springside@skymesh.com.au
PTR

BRAD AND HAYLEY ROBINSON

438 AUBIGNY-CROSSHILL RD
AUBIGNY QLD 4401
0439 337 925
hayley@robinsonslivestock.com
QNH

MARTY ROWLANDS & STEPHEN LEAN

229 TARPULIN ROAD
DUAN QLD 4352
07 4630 5890
r_marty@ymail.com
http://m.facebook.com/kbvsimmentals
ZKV

RODNEY & ELISABETH SKENE

3246 DALBY CECIL PLAINS ROAD
CECIL PLAINS QLD 4407
0428 717 847
info@meldonparksimmentals.com.au
www.meldonparksimmentals.com.au
CCR

WILLIAM SKENE

3246 DALBY CECIL PLAINS ROAD
CECIL PLAINS QLD 4407
meldonpark@optusnet.com.au
WMP

REBECCA SKENE & BEN PASSMORE

266 PASSMORE ROAD
ELLANGOWAN QLD 4361
0437 680 360
becskene11@gmail.com
MRB

TOM SLAUGHTER

ATTN TOM SLAUGHTER
GPO BOX 132
BRISBANE QLD 4001
07 3041 2800
austrex@austrex.com.au
STO

CODY SMOOTHY

574 UPPER PINELANDS ROAD
UPPER PINELANDS QLD 4355
0429 292 979
ca-smoothy@hotmail.com
COD

MARK SMOOTHY

20 BLUEWATER DRIVE
ELLIOT HEADS QLD 4670
rigpigsMOOTHY@hotmail.com
MSS

TUNGAMAH FARMING PTY LTD

HEREWARD STATION
MORELLA QLD 4730
07 4658 9186
admin@herewardbeef.com.au
HWD

SCOTT & CLAIRE YORK

70 JACKSON WANDOAN ROAD
JACKSON QLD 4426
0427 274 410
scyork@bigpond.com
www.casatoro.com.au
YSC

YORK CATTLE CO

PO BOX 2220
EMERALD QLD 4720
0458 823 931
karragarra@yorkmail.com.au
YCC

SOUTH AUSTRALIA

TOM & LIZZY BAKER

PMB 52
MILLICENT SA 5280
08 8734 3031
tbaker@bakergroup.com.au
www.woonalleesimmentals.com
WEE

GARY & JOY ALLEN

PO BOX 516
MOUNT GAMBIER SA 5290
08 8725 7835
tugulawa9@bigpond.com.au
www.tugulawasimmentals.com.au
GAA

SHIRLEY BARKER

CAITHNESS
PO BOX 133
MOUNT BARKER SA 5251
08 8391 1011
ALT

MASON GALPIN & BEN BROOKSBY

1371 CASTERTON ROAD
PENOLA SA 5277
0437 527 606
ben@nakedfarmer.org
GBE

ARABELLA BRANSON

PO BOX 1257
UNLEY SA 5061
08 8215 0077
abranson@arabellabranson.com.au
ALV

LEWIS BRUGGEMANN

PO BOX 102
MALLALA SA 5502
08 8527 2538
lewis.bruggemann@thomasfoods.com
ZGB

REGAN BUROW

199 LAWREYS ROAD
PMB 73
NARACOORTE SA 5271
08 8769 6168
regan@yerwalestate.com
www.yerwalestate.com/
AMO

SARAH BURPEE

PO BOX 624
MEADOWS SA 5021
0458 320 784
sarah.draytonpark@gmail.com
SLB

CARALMA PASTORAL CO

C/- MARK LAMBORN
PO BOX 127
WISTOW SA 5153
0419 948 298
caralmapastoralcompany@gmail.com
CML

NIKOLA CARR & MITCH TEMPLEMAN

31 WILHELM ROAD
MOUNT TORRENS SA 5244
0439 601 112
carrnikola@gmail.com
CTS

TIM & HENRY CARTLEDGE

PO BOX 17
MENINGIE SA 5264
08 8575 5021
info@lcsblacks.com.au
LCS

BRAD CREEK

PO BOX 3712
MT GAMBIER SA 5290
0400 265 319
bpccreek@yahoo.com.au
ZKR

ANAIS & RORY FALZON

LOT 100 BASSHAM ROAD
ECHUNGA SA 5153
08 8388 8485
falzon.fiona@gmail.com
FFA

RICHARD & WENDY HODGE

PO BOX 1020
GOOLWA SA 5214
08 8555 4097
wendyjhodge@bigpond.com
www.waterfrontsimmentals.com.au
HRH

LILY & DONG CATTLE STUD PTY LTD

29 BOWYERS WAY ROAD
ROBE SA 5276
0406 256 216
zz029326@aliyun.com
www.lakeside5276.com
LDC

LLEWELLYN FAMILY

PO BOX 240
KEITH SA 5267
0417 830 352
northwindfarming18@gmail.com
LCC

P & MC MAGLIERI

PO BOX 35
MCLAREN VALE SA 5171
08 8323 8648
NAW

BK & FM MILLER

PO BOX 78
SPRINGTON SA 5235
0477 284 284
brentonmiller@bigpond.com
JKM

QJ & RJ MOONEY

PO BOX 293
TINTINARA SA 5266
08 8388 8492
qjrj@mtmooney.com.au
ZOM

GRANTLEY & VICKI MULLER

PO BOX 8121
MOUNT GAMBIER EAST SA 5291
0428 572 354
vjmmuller@bigpond.com
GCM

ASHLEY NESS

PO BOX 65
PARNDANA
KANGAROO ISLAND SA 5220
08 8559 5217
timbercreek@skymesh.com.au
NAA

MW & RL NICOLLE

PO BOX 493
KEITH SA 5267
0488 145 433
mw.rl.nicoll@bigpond.com
MRN

A & H PACITTI

1061 HINDMARSH TIERS ROAD
HINDMARSH TIERS SA 5202
0433 078 341
hails.84@hotmail.com
PAC

ANNIE PALMER

LIMITLESS CATTLE CO
PO BOX 374
MT COMPASS SA 5210
0429 810 095
sales@showcattlesuppliesaustralia.com.au
ZXA

DARRYN & SAMANTHA ROTHE
TOLHVERRAE
C/- POST OFFICE
PADTHAWAY SA 5271
08 8765 5197
tolhverrae@bigpond.com.au
DSR

TC & LA SMITH
PO BOX 605
LOXTON SA 5333
08 8587 6218
STC

SAVANNAH CATTLE CO
PO BOX 2275
MCLAREN VALE SA 5171
0411 955 576 (Sarah)
savannahsimbrahs@gmail.com
vpccattle@gmail.com
SCC

MARTHA VALKENBURG
PO BOX 520
MT BARKER SA 5251
0407 780 888
martha@lmag.com.au
MVA

STEPHEN & ROBYN VIVIAN
RUNDLE ROAD
COWIRRA SA 5238
08 8569 2266
knockando@bigpond.com
SBV

PHIL & JULIE-ANNE WEBB
6 FATCHEN COURT
GREENWITH SA 5125
08 8288 0254
plwebb13@bigpond.com
JAW

TJ & MJ WHITTLESEA
LOT 5203 MAIN SOUTH RD
MYPONGA SA 5202
0408 070 097
whittleseas@bigpond.com
TMW

CRAIG WOODING
293 CHARCUTT ROAD
PENOLA SA 5277
08 8736 3181
snow6@live.com
CLW

TASMANIA

HAYLEE BENNETT
796 PRESTON ROAD
NORTH MOTTON TAS 7315
0400 640 755
hales38@icloud.com
JBH

MICHAEL FRANKCOMBE
GREEN SLOPES
914 WEST KENTISH ROAD
SHEFFIELD TAS 7306
0438 121 868
slopesimm@gmail.com
MBF

SCOTT FRANKCOMBE
PO BOX 226
SHEFFIELD TAS 7306
0408 129 779
anitaandscott@bigpond.com
SBF

ALEASHA GOSS
PO BOX 107
SHEFFIELD TAS 7306
0437 564 162
aleasha.goss@gmail.com
ZGS

PHILLIP PARTRIDGE
63 GEORGE STREET
SCOTTSDALE TAS 7260
0400 636 836
summerhillssimmentals@outlook.com
<https://www.facebook.com/summerhillssimmentals>
MMP

CHELSEA RAYNER
50 SHARMANS ROAD
LOWER BEULAH TAS 7306
0447 426 629
kdsimmentals@gmail.com
ZKU

ALLAN WALKER
PO BOX 212
CURRIE TAS 7256
0427 249 174
abwalker@activ8.net.au
SBE

A & CP WIGHTON
68 CREELEYS ROAD
SASSAFRAS TAS 7307
0428 891 444
clintwighton@gmail.com
KNI

VICTORIA

ALTAGENETICS
17/70-72 LAMBECK DRIVE
TULLAMARINE VIC 3043
03 8336 1458
kirrily.lumsden@altagenetics.com
3GT

SCOTT ANDERSEN
T/AS HAZEL DELL PASTORAL
130 KOETSVELDT ROAD
RYANSTON VIC 3992
0409 785 846
scottando39@hotmail.com
TPJ

GRANT ANDERSON
128 EMMELINE DRIVE
GISBORNE VIC 3437
0418 539 910
grant@mountviewconstructions.com.au
PSM

BREWAG BREWER
401 SOLDIER SETTLERS ROAD
TALLANGATTA VALLEY VIC 3701
0419 600 527
brewerbeef@gmail.com
www.brewerbeef.com.au
BBS

D, T, A & H BREWER
401 SOLDIER SETTLERS ROAD
TALLANGATTA VALLEY VIC 3701
02 6020 9727
brewerbeef@gmail.com
SVD

BULLANDO SIMMENTALS
CASEY RYAN
33 ROYAL PARADE
RIDDELLS CREEK VIC 3431
03 5428 5444
bullandosimmentals@gmail.com
ZXR

STU CAMERON
1016 UNION ROAD
INVERGORDON VIC 3636
03 5865 5200
inverleigh@outlook.com.au
SJC

R, R, R & J CANNING
MAVSTAR SIMMENTALS
178 TRIGGERS ROAD
MYAMYN VIC 3304
0409 959 058
mavstar1965@gmail.com
ZRZ

BRODHI CARRACHER
1959 GLENELG HIGHWAY
WANNON VIC 3301
08 8724 7100
brodhicarracher@hotmail.com
ZEU

TIM CARTER
102 GLEESONS LANE
PURNIM VIC 3278
0407 036 407 (Karis)
fairviewpurnim@gmail.com
4TC

HAYDEN CHAPPEL
556 TENNYSON ROAD
TENNYSON VIC 3572
03 5488 2262
dalechappel@gmail.com
ZKO

DALE & JILL CHAPPEL
556 TENNYSON ROAD
TENNYSON VIC 3572
03 5488 2262
dalechappel@gmail.com
ZZC

GEORDIE ELLOITT & CRYSTAL BELL
CRYSTAL BELL
652 MYAMYM - MACARTHUR ROAD
BREAKAWAY CREEK VIC 3303
0438 874 587
gclivestock@outlook.com.au
GCL

PATTI DOELLE
PO BOX 23
EDENHOPE VIC 3318
03 5585 1279
AYG

CAM EMERSON
PO BOX 34
DRYSDALE VIC 3222
03 5272 3488
camemerson3@gmail.com
AFA

BERNARD & FIONA EVANS
KINROSSIE
109 WILLIAMS LANE
OXLEY FLATS VIC 3678
03 5727 3262
fiandbern@bigpond.com
BXH

PETER & JANE FRASER
PO BOX 13
LANCEFIELD VIC 3435
0408 336 171
hillborofarming@gmail.com
HBP

GENETICS AUSTRALIA
CO-OPERATIVE LTD
PO BOX 195
BACCHUS MARSH VIC 3340
0439 417 941
accounts@genaust.com.au
WWS

KAYLENE GILLET
38 FOREST RD SOUTH
LARA VIC 3212
0438 823 281
gillie@aapt.net.au
KJG

GARRY & KAYLENE GILLET
LARA-LEIGH SIMMENTALS
38 FOREST ROAD SOUTH
LARA LAKE VIC 3212
0412 017 660
garryg@aapt.net.au
GGJ

ANNABEL GLASSER
24 KEARNEY LANE
STAGHORN FLAT VIC 3691
0434 379 310
annabel.glasser01@gmail.com
WGG

HAMISH HOOPPELL
PO BOX 3
ROCHESTER VIC 3561
0428 004 349
hamishhooppell@outlook.com
ZOO

GEORGIA HOWELL
10 BAILEY STREET
AMPHITHEATRE VIC 3468
03 5466 2357
georgiahowell196@gmail.com
ZGV

GREG & JEANETTE HUGGINS

809 BALLAN-EGERTON ROAD
MOUNT EGERTON VIC 3352
03 5368 9142
JGH

CRAIG JENKINS

202 KILLARA ROAD
GRUYERE VIC 3770
0419 887 712
office@littlecreekbeef.com
www.littlecreekbeef.com
LCR

CHRIS & SHARON JORDAN

198 KOO-WEE-RUP LONGWARRY ROAD
LONGWARRY VIC 3816
03 5629 9060
tenrose@dcsi.net.au
www.tenrose.com.au
TCJ

JOHN LEEK

126 MT ARARAT NORTH ROAD
NAR NAR GOON VIC 3812
0409 537 445
john@leeksplumbing.com.au
JLE

LONGVIEW AGRICULTURE P/L

27 HAINES ROAD
BARRABOOL VIC 3221
0424 541 428 (JARROD)
jarrod@longviewagri.com
LOIN

ANGELA & ANDREW LYONS

885 MELVILLE-Forest-VASEY RD
VASEY VIC 3407
03 5575 6251
wilkahherefords@bigpond.com
AAL

CARLIE MACKELMANN

34 BEDFORD ROAD
INVERGORDON VIC 3636
0447 772 142
carlie.mackelmann@gmail.com
MAK

F & AK MOYA

560 SEVEN MILE ROAD
NAR NAR GOON VIC 3812
03 5942 5473
a.k.moya@bigpond.net.au
MFA

LAURA NANKERVIS

706 MORRISON ROAD
BYAWATHA VIC 3678
0438 049 192
lauranankervis87@gmail.com
LSB

GIL RAYNOR

PO BOX 730
ORBOST VIC 3888
03 5158 1235
gil.raynor@bigpond.com
GMR

B & C ROBERTS

ALCHEMY PARK
51 FULLER ROAD
INVERLEIGH VIC 3321
03 5265 1580
alchemyparksimmentals@gmail.com
BRC

GINA RYAN

GLENVIEW DEL SIMMENTALS
67 JOYCES ROAD
GLENBURN VIC 3717
03 5797 8334
RYA

SALESIAN COLLEGE SUNBURY

C/- PETER SYRIMI
1-3 MACEDON STREET
SUNBURY VIC 3429
03 9744 0000
farm@scr.vic.edu.au
FXI

GRAEME E & JEAN SMITH

560 RAMSAY ROAD
IRREWARRA VIC 3249
03 5233 6204
SGE

JON SUTHERLAND

30 CAMPASPE RD
KILMORE VIC 3764
0400 307 619
Jonathon.Sutherland@elders.com.au
SAY

DAVID AND REBECCA SWAYN

2808 PRINCES HIGHWAY
POMBORNEIT VIC 3260
0400 464 460
daveyhoundboy@gmail.com
DRS

GREG & VIKKI TEMPLETON

590 BALD HILL ROAD
NAR NAR GOON VIC 3812
03 5942 5540
vtempleton@iprimus.com.au
GVT

RORY TEMPLETON

590 BALD HILL ROAD
NAR NAR GOON VIC 3812
0432 155 225
vtempleton@iprimus.com.au
ZQN

DJ & HM THOMPSON

6868 MURRAY VALLEY HWY
COHUNA VIC 3568
0418 583 252
david2183@live.com.au
THO

SHIRLEY TRENER

BALGOWAN
PO BOX 517
NEERIM SOUTH VIC 3831
03 5628 1491
balgowan@dcsi.net.au
SPR

PHILIP WEBB

PO BOX 264
YEA VIC 3717
0421 223 752
info@webbpastoral.com.au
www.webbblacksimmentals.com.au
WEB

VANESSA WENN

BUNYIP BLACK SIMMENTALS
PO BOX 30
BUNYIP VIC 3815
0407 122 881
bunyipblacks@hotmail.com
VPW

PETER & VANESSA WENN

PINAROO HILLS SIMMENTAL STUD
PO BOX 30
BUNYIP VIC 3815
0417 317 830 (Peter)
pinaroorhills@hotmail.com
WCK

WESTELLA AGRICULTURAL

SERVICES PTY LTD
PO BOX 444
DROUIN VIC 3818
0400 502 892
westellaagsservices@gmail.com
RMF

EDWINA WILTSHIRE

PO BOX 326
BALNARRING VIC 3926
03 5989 0807
windjammercharolais@bigpond.com
WJS

WEST AUSTRALIA

BRIGHTON FARMS

MR & RA KING
PO BOX 262
DONNYBROOK WA 6239
0428 311 246
brighton.farms@bigpond.com
MRK

PETER COWCHER

246 KENNEDY ROAD
WILLIAMS WA 6391
08 9885 6058
ccowcher@westnet.com.au
willandrafarming.com.au
AJY

RIEGERT FARMS

101 NICHOLSON ROAD
YARLOOP WA 6218
08 9709 8548
manager@riegertfarms.com.au
https://riegertfarms.com.au/
RIE

JAMES GARLAND

PO BOX 9243
PICTON WA 6229
0406 078 019
mandys@dieselmech.com.au
SGP

ASHER GODDARD

LOT 500 ORANGE SPRINGS ROAD
ORANGE SPRINGS WA 6503
0405 128 609
goddard.asher@gmail.com
BCS

HOWARD HANN

MR ANDREW HANN
RMB 4240
ESPERANCE WA 6450
08 9071 4949
MHH

KEVIN CHARLES & JANICE ROBYN HARD

NARACOOPA SIMMENTAL STUD
668 MOUNT SHADFORTH ROAD
DENMARK WA 6333
08 9840 9336
naracoopastud@westnet.com.au
KJH

MIKE ROB JULIE AND DIANE INTROVIGNE

197 DEZOTTI ROAD
BRIDGETOWN WA 6255
08 9764 4012
mjintro@bigpond.com
www.bonnydalesimmentals.com
MBB

TONY & LOREEN KITCHEN

BANDEEKA STUD
432 BOUNDARY ROAD
BOYANUP WA 6237
08 9727 2207
bandeeka@bigpond.com
LGK

GRAHAM & ANDREW LARKE

JIM JAM
1248 PINJARRA ROAD
RAVENSWOOD WA 6208
0479 149 290
glarke@westnet.com.au
RGS

KRISTY LAWSON

50 HULL WAY
BEECHBORO WA 6063
08 9377 6531
rural_ropes@outlook.com
LMS

DANNY & JENNY MAY

PO BOX 1164
BUSSELTON WA 6280
08 9753 1884
daniel.partridge@bigpond.com
PDJ

KENT & NICOLE MUIR

1221 JUNCTION ROAD
PERUP WA 6258
0408 922 925
wyndarragrazing@outlook.com
E4N

NEXT GENERATION SIMMENTALS

CLEWS ASSET MANAGEMENT P/L
282 BOYANUP ROAD
STRATHAM WA 6237
0418 155 992
mickclews@cloud.com
NGS

BRAD & SYLVIA PATTERSON

PO BOX 777
KATANNING WA 6317
08 9822 8042
bullockhills@bigpond.com
www.bullockhills.com.au
ERP

ROBERT & RUTH POOLE

616 YELVERTON ROAD
YELVERTON WA 6280
0475 522 735 RUTH
rr.poole@bigpond.com
RRP

STONEY ENTERPRISE

4649 CHILLINUP ROAD
GNOWELLEN WA 6328
08 9847 1011
stoney@stoneyenterprise.com.au
1SE

NORM TRIGWELL

BOX 48
BOYANUP WA 6237
08 9731 5281
ntrigwel@bigpond.net.au
HRT

PAUL TUCKEY

MUBARN
PO BOX 163
PINJARRA WA 6208
08 9530 4774
paul.tuckey@bigpond.com
ZPT

WA COLLEGE OF AGRIC DENMARK

C/- KEVIN MARSHALL
PO BOX 350
DENMARK WA 6333
08 9848 0200
kevin.marshall@education.wa.edu.au
DNK

SAMUEL WEIGHTMAN

284 BULLANT DRIVE
FOREST GROVE WA 6286
0427 593 095
sevenbrooks@gmail.com
ZWT

KANE & SARSHA WETHERELL

359 BOYANUP-PICTON ROAD
BOYANUP WA 6237
08 9731 5248
kswetherell@bigpond.com
KSW

DAVID & AUDREY WEIGHTMAN

MR D & MRS A WEIGHTMAN
284 BULLANT DRIVE
FOREST GROVE WA 6286
0427 593 095
topweight@westnet.com.au
TOP

ASSOCIATE COMMERCIAL MEMBERS

NEW SOUTH WALES/ACT

ALAN & MARJORIE ANDERSON

WENDOUREE SIMMENTALS
PO BOX 34
COBBITTY NSW 2570
0418 253 249
andcatt2@bigpond.com
SDM

LISA BONENKAMP

103 KELLYS ROAD
LONGFORD NSW 3581
0493 308 416
lisa.bonenkamp@gmail.com
XLB

BOOMEY PARK

C/- ANGUS SHANNON
LARRAS LEE NSW 2866
0427 636 566
boomeynorth@gmail.com
2VQ

CHRIS BOWMAN

PO BOX 615
NELSON BAY NSW 2315
02 9973 3941
chris.bowman@pcce.net
VAS

PATSY BROMLEY

21 MCKINNON ROAD
BOAT HARBOUR NSW 2480
02 6625 2341
patriciabromley@bigpond.com
BNA

IAN CAREY

TLC BLACK SIMMENTALS
3374 MURRINGO ROAD
YOUNG NSW 2594
0412 484 614
carey_pastoral@bigpond.com
TLC

BS & TA CREBERT

5166 ILLAWARRA HIGHWAY
ROBERTSON NSW 2577
02 4885 1350
brucecrebert@bigpond.com.au
CBC

MACARTHUR ANGLICAN SCHOOL

C/- D BAKER
PO BOX 555
CAMDEN NSW 2570
02 4629 6287
dbaker@macarthur.nsw.edu.au
ZYM

ANTHONY JOHN & HELEN DONEHUE

18 INDERI LANE
WATTLE PONDS NSW 2330
02 6573 3330
a.h.donehue@outlook.com
JAD

RUSSELL & BETH EVANS

1541 MANNING POINT ROAD
MITCHELLS ISLAND NSW 2430
02 6553 2768
manning.sim@bigpond.com
REB

BR & MD FOGG

GLENAGRA
722 MAIN ROAD
CONGEWAI NSW 2325
UBI

GEOFF GRANT

PO BOX 932
PORT MACQUARIE NSW 2444
YBW

ELIZABETH HAMILTON

18 FOSTERS LANE
ROUS MILL NSW 2477
02 6629 5327
lizmhamilton8@gmail.com
QNU

JUSTIN INSKIP

101 MULQUNNEYS ROAD
BRAUNSTONE NSW 2460
0428 432 558
justini@wbsaccountants.com.au
2SK

BRUCE & SANDRA JORGENSEN

THE VALLEYS
6224 BRUXNER HIGHWAY
MUMMULGUM NSW 2469
02 6664 7262
brucejorgo@gmail.com
2SA

GARY & HELEN KILDEY

BROOM HILLS
GILGANDRA NSW 2827
0419 680 895
garykildy@gmail.com
4GK

CJ & DM LOVE

ROUND MOUNTAIN ROAD
VIA MURWILLUMBAH NSW 2484
02 6676 2424
diane.love@bigpond.com
2LO

BRUNO MARRAPODI

191 EDGAR STREET
CONDELL PARK NSW 2200
0458 566 422
ZNO

RS & NR MCMANUS

25 POLA CREEK ROAD
VIA KEMPSEY NSW 2440
02 6562 4490
VAP

KENNETH MOORE

3 HARPER ROAD
BASIN VIEW NSW 2540
kenneth.david53@gmail.com
VMK

ANTHONY NOVAK

1 BRITNY PLACE
KELLYVILLE RIDGE NSW 2155
02 9836 0813
toknmn@outlook.com
2NK

ANNIE PUMPA

20 HIMALAYA DRIVE
TABLE TOP NSW 2640
0458 227 277
annie_pumpa@outlook.com
WAP

PETER SIMPSON

CHAIN GATE
RMB 404 OURA ROAD
WAGGA WAGGA NSW 2650
02 6921 1271
petersimpson2650@gmail.com
YSN

SOUTHERN INTERNATIONAL

SUITE 2 UNIT 19
669 DEAN STREET
ALBURY NSW 2640
0421 282 947
kate.brabender@sailsxp.com
3SI

TURNERS MAHONGA PARK

PENSHURST STATION
CONDOBOLIN NSW 2877
02 6029 5266
2IK

AJ & NA VARLEY

ARKOONA
RMB 3095 LOWER FINLEY ROAD
FINLEY NSW 2713
0427 831 811
arkoona@bigpond.com
4NV

ROBERT WEBBER

PO BOX 40
GLADSTONE NSW 2440
02 6567 4586
webber@qtz.com.au
WRW

RICHARD & DIANNE WHITEMAN

THE ROOKERY
33050 KIDMAN WAY
COBAR NSW 2835
02 6837 3902
rookery@activ8.net.au
2VV

KENNETH ROBERT YERBURY

28 PRIDHAM STREET
FARRER ACT 2607
0407 361 637
4KY

QUEENSLAND

STEVE & TERRI ASMUS

'WESTHOLME'
92 FRAYNE ROAD
AMAMOOOR QLD 4570
2TZ

RHYS BRANSON

UNIT 28 PANDAU STREET
GYMPIE QLD 4570
0429 610 975
rhys.branson@outlook.com.au
ZVQ

JAN BURNETT

BENDEMEER
CLERMONT QLD 4721
07 4983 5175
admin@burnettgroup.com.au
burnettgroup.com.au
2BU

EA & MC COOKE

T/A RAAU PTY LTD
OLD PROSTON STATION
PROSTON QLD 4613
0746 391 621
edwin.cooke@raau.com.au
4EC

BARRY & DOREEN COOKE

ALLAMBIE PARK
1083 JONDARYAN NUGIL ROAD
BRYMAROO QLD 4403
07 4692 7738
turana@activ8.net.au
DBR

LLOYD & WENDY FAIRBAIRN

PO BOX 77
KINGAROOY QLD 4610
07 4162 4212
lloyd.wendy@bigpond.com
FLW

FRANK FINGER

HILLVIEW
CLERMONT QLD 4721
0429 832 887
fc.finger@bigpond.com
4FF

SHERYL FRANZ

7989 KILCOY-MURGAN ROAD
MANUMBAR QLD 4601
07 4168 8107
safranz@skymesh.com.au
4LF

JASON JEYNES

JJ FITTING - POMINDA TRUST T/AS
'POMINDA' 260 SHANNEN RD
DALMA QLD 4702
0402 829 422
jeyneslivestock@gmail.com
4JJ

BEVAN JOHNSTON

3723 IRONPOT RD
MS 514
KINGAROOY QLD 4610
07 4164 8167
JBK

ROY & SHAUNA KELLY

T/A KELLY BROS
549 BLANCHVIEW ROAD
BLANCHVIEW QLD 4352
07 4630 3133
ksk90@bigpond.com
2KY

JILL MATTHEWS

23/8 HIGHFIELDS ROAD
HIGHFIELDS
PLAINBY QLD 4352
07 4615 5157
2MU

GEORGE PITKIN

GS NC DG & JW PITKIN
CULGOWIE
WANDOAN QLD 4419
07 4627 4936
drdpastoral@bigpond.com
2KK

SHANE POLZIN

44 MOONDOONER ROAD
MURGON QLD 4605
4SP

ROSS & GAIL PRIOR

PO BOX 296
TIARO QLD 4650
0407 181 714
2WP

CHARLIE TAYLOR

155 KINGS LANE
MALENY QLD 4552
07 5435 2380
4CT

R & J WALKER

IWONA
MITCHELL QLD 4465
07 4623 2619
iwonabeef@gmail.com
2WI

N & S WARDLE & J SIMMONS

WONGA-BRI
451 BECKETT ROAD
BRIDGEMAN DOWNS QLD 4035
07 3263 2172
NSW

CLIFF & JOY YORK

GLENGYLE
DULACCA ROAD SOUTH
DULACCA QLD 4425
07 4628 1121
YOR

SOUTH AUSTRALIA

CI & MK BATEMAN

PMB 55
MILLICENT SA 5280
0428 856 658
chrismaris@bigpond.com

KEN & KAYE BATT

41 ARTHUR STREET
PENOLA SA 5277
royalpark1@bigpond.com
3KK

AJ & JD HEAD

PO BOX 62
CUMMINS SA 5631
08 8676 8013
calaundra@bigpond.com
2UH

LS JOHNSON & SONS

436 JOHNSON ROAD
NARACOORTE SA 5271
0419 036 964
gljspringbank@gmail.com
4GJ

CHRIS KLAASSENS

90 RUWOLDT ROAD
YABL SA 5291
0408 854 812
klaassenscontractors@gmail.com
4CK

KJ & HA MCGRATH

286 BURKS ISLAND RD
BEACHPORT SA 5280
08 8735 8610
millvet@internode.on.net
KHM

PHIL & MARY

NALPA PASTORAL COMPANY
589 NALPA STATION ROAD
NALPA SA 5255
08 8572 7219
jpwitthers@bigpond.com
AQX

SUNRAY PASTORAL

PO BOX 762
MILLICENT SA 5280
0428 359 034
sunraypastoral@hotmail.com
2VD

GM & MA SMITH

BOX 85
RIVOLI
RENDELISHAM SA 5280
0427 354 258
rivoli8@bigpond.com
2VC

JIM AND FRANK YOUNG

1/40 NURSERY WAY
HIGHWAY SA 5089
08 8278 6123
plus4more@icloud.com
ANJ

TASMANIA

DARRYL & YVONNE BARKER

PO BOX 148
PENGUIN TAS 7316
0427 509 792
DYB

MARTIN & SUZIE DUMARESQ

MT IREH
358 PATEENA
LONGFORD TAS 7301
03 6391 1630
mountirehstate@netspace.net.au
AQC

VICTORIA

NR & PM ADAMSON

PO BOX 319
PORT FAIRY VIC 3284
03 5562 0620
nadamson@charlesstewart.com.au
NPA

COREY BAULCH

OLD TIMBOON ROAD
SKIBO VIC 3260
0437 448 837
4BC

MATT BAXTER

138 DAIRY LANE
THE SISTERS VIC 3265
03 5592 6227
MBaxter@charlesstewart.com.au
ZTQ

DAVID BENNIE

314 ROLLOS ROAD
PANMURE VIC 3265
0439 821 146
d.bennie@bigpond.com
NIE

S & R BOULTON

593 COBAINS ROAD
COBAINS VIC 3851
0429 445 461
shelley@wellingtonlivestock.com.au
2LZ

CAMERON BROS

651 MONARO HIGHWAY
CANN RIVER VIC 3890
03 5158 6302
cameronbros@bigpond.com
YCU

J & K CLARK

1045 OUTTRIM ROAD
INVERLOCH VIC 3996
03 5674 2722
2KZ

GEOFF & LAURA COCKERELL

15 PARK STREET
PORTARLINGTON VIC 3223
03 5259 3691
gelorapark@tpg.com.au
www.users.tpg.com.au/gelora
GLC

TERRY & SUSAN COOLAHAN

150 BAYNE STREET
TERANG VIC 3264
0429 832 204
TSC

JOHN CRAWFORD

PO BOX 1
DARNUM VIC 3822
03 5627 8414
jicrawford@bigpond.com
2CJ

RICKY FOSTER

HAVEN PARK ENTERPRISES
550 SATIMER ROAD
WANDO VALE VIC 3312
03 5582 0200
randnfoster@havenpark.com.au
www.havenpark.com.au
4RF

SUE GILBEE

MT CAROLINE
5321 MELBA HIGHWAY
YEA VIC 3717
03 5797 8500
sue.gilbee@gmail.com
2QG

GLEN BROTHERS PTY LTD

WATTLEBANK
64 FLEMINGS ROAD
GUILDFORD VIC 3451
0427 047 616
glenbrothers2@gmail.com
2VB

FIONA GLOVER

75 HEADS RD
LANG LANG VIC 3984
0416 216 951
fiona@wattlewoodangus.com.au
200

SIMON ROY & JOSHUA ROD GREAVES

280 GARVIES ROAD
NERRENA VIC 3953
0427 649 394
greaves.josh@outlook.com
2QK

TREVOR & LYN HATCH

HOOK ROAD
ATHLONE VIC 3818
03 5659 9237
hatch@dcsi.net.au
BMH

JASON & KATH HEAD

PO BOX 942
ECHUCA VIC 3564
03 5480 7029
jason_head_6@hotmail.com
JAH

ELLEN & MERRYN HEBBLEWAITE

PINEHOLME
415 MT HESSE RD
EURACK VIC 3251
03 5234 6241
VME

BERNARD IVONE

398 BUFFALO CREEK ROAD
MYRTLEFORD VIC 3736
03 5752 2572
bivone@bigpond.com.au
4BI

JAB PASTORAL PTY LTD

PO BOX 508
MAFFRA VIC 3860
0429 427 811
jabpastoral@wideband.net.au
3AJ

PA & JA JOHNSON

350 JOHNSON SIDING ROAD
GREENWALD VIC 3304
0408 958 451
pjjohnson10@bigpond.com
4PJ

GARY WAYNE JONES

6679 PRINCES HIGHWAY
MUMBANNAR VIC 3304
03 5528 6261
glenample83@gmail.com
YXP

IAN KERR

BALDS ROAD
WINNAP VIC 3304
03 5528 1216
4IK

GARY LANGSHAW

BARWALLA
PO BOX 536
SALE VIC 3850
0417 134 169
barwalla_4330@bigpond.com
2LG

GORDON & VALERIE LEAR

11 BOWLES LANE
YACKANDANDAH VIC 3749
gordonlear@bigpond.com
2LR

MALCOLM MACFARLANE

11 NORTH ROAD
JINDIVICK VIC 3818
0429 985 267
dimalint88@gmail.com
3MM

ANDREW T MARRIOTT

TILPA
162 GRIMWADE ROAD
BENALLA VIC 3672
03 5762 6722
tilpa162@bigpond.com
YYM

RICHARD & KYLIE MARTIN

210 MCMAHONS ROAD
KARIAH VIC 3260
0400 216 635
manoorap@bigpond.net.au
4BP

LAURENCE MILLARD

475 RIFLEBUTTS RD
BIRREGURRA VIC 3242
0407 840 701
mumzie_dadzie@hotmail.com
4LM

COLIN NOEL MUNRO

BURRENDAH
3911 GLENELG HWY
COLERAINE VIC 3315
03 5575 2049
noelmunro48@icloud.com
2VO

NEALE PARKE

201 PETERSONS ROAD
ELLINBANK VIC 3821
0412 863 076
lisast@dcsi.net.au
2NF

BRUCE PRATT

141 BLAZES TRACK
WARRAGUL SOUTH VIC 3821
0428 310 156
naalena@dcsi.net.au
2UP

ROSEBANK PASTORAL COMPANY

1960 CASTERTON-APSLEY ROAD
NANGEELA VIC 3312
03 5582 4229
stephenmjkoch@hotmail.com
4RP

JULIE ROTHENBERGER & PETER MCPHERSON

7070 GOULBURN VALLEY HIGHWAY
KIALLA WEST VIC 3631
03 5823 2288
julierothenberger88@gmail.com
KWS

AGNES SCHEMBRI

MAVERICK SIMMENTALS
4110 HAMILTON HIGHWAY
HESSE VIC 3321
03 5287 1248
PPS

ANTONIA SLADIC

3 GASCOYNE LN
WEST WODONGA VIC 3690
0410 045 090
asladic29@gmail.com
XAS

GREG & CINDY SMITH

115 CHRISTIES ROAD
ELLMINYT VIC 3250
0438 315 204
gregorysmith.83@gmail.com
2VK

SA & CV SMITH

64 PRINCES HWY
BOLWARRA VIC 3305
0417 332 968
sashere@yahoo.com.au
4SS

MELISSA STEWART

115 BROCK ROAD
HALLORA VIC 3818
0438 235 136
mel@rawprideorganics.com.au
3MS

JOHN & MAREE TERRILL

76 CHILTERN VALLEY ROAD
RUTHERGLEN VIC 3685
02 6032 8115
terrillj@bigpond.net.au
2IL

MATTHEW THOMAS

1196 LONGWOOD-RUFFY ROAD
RUFFY VIC 3666
0412 596 496
makt74@yahoo.com.au
2NM

GREG & YVONNE THOMPSON

150 LAING ROAD
NAYOOK VIC 3832
03 5628 4366
2TM

PETER AND KERRY TULL

97 LANGS ROAD
LIMESTONE VIC 3717
0417 541 067
murrinstone@hotmail.com
4PT

MICHAEL & SUE VAN HOUT

935 ARALUEN ROAD
SHADY CREEK VIC 3821
03 5626 6353
s.hout935@dcsi.net.au
2VH

MARK WEBSTER

140 PINEGROVE ROAD
NORTH POOWONG VIC 3988
043 802 994
marlingrange@gmail.com
4MW

JOHN WILLIAMS

60 MACKAYS ROAD
IRRAWARRA VIC 3250
0438 315 232
3JS

YARRACORP AUSTRALIA

SUITE 1.01 LEVEL 1
20-22 ALBERT ROAD
SOUTH MELBOURNE VIC 3205
0427 289 343
vincent.h@yarracorp.com
4YA

WEST AUSTRALIA

WJ, RM, MC & CJ ATKINSON
45 SWANSEA STREET
EAST VICTORIA PARK WA 6101
0427 013 453
helsak@westnet.com.au
3WA

MALCOLM AULD
2710 CHESTER PASS ROAD
NAPIER WA 6330
08 9844 3989
malcolmauld2710@gmail.com
QWB

GEOFF & MARIE CATTACH
MR GR AND MRS MP CATTACH
1 LANGHAM STREET
NEDLANDS WA 6209
0419 046 678
gcattach@westnet.com.au
WBC

SL & ME COCKRAM
PO BOX 51
GIN GIN WA 6503
0417 957 523
4CS

KEN ELLIOTT
860 HOPELAND ROAD
KEYSBROOK WA 6126
0419 860 010
keysbrooktimbers@bigpond.com
2WU

F. PESSOTTO & SONS
P.O. BOX 102
MANJIMUP WA 6258
08 9772 3570
pessotto@karriweb.com.au
4PS

BRENDON GIUDICI
2349 DONNYBROOK/
BOYUPBROOK ROAD
GLEN MERVYN WA 6239
0488 591 458
bmgjudici@gmail.com
3BG

JW HALTER
6 HOCKEY PLACE
WEST BEACH WA 6450
0428 144 760
andrew.halter.76@gmail.com
4JH

ROBERT & MINNIE ITALIANO
PO BOX 157
HARVEY WA 6220
08 9729 1232
rosemontpark1@bigpond.com.au
RMI

TERRY JAMES
TERRICA VALLEY
PO BOX 164
HYDEN WA 6359
0428 506 507
terrivalley@outlook.com
4TJ

PETER JOHN
988 QUEEN ELIZABETH AVENUE
CHAPMAN HILL WA 6280
0428 556 399
sherolee2@bigpond.com
PET

STEVEN & ROBYN LEES
TALLIDENE SIMMENTALS
BOX 183
BOYUP BROOK WA 6244
08 9766 1035
SRL

T G MARSHALL
324 RMB
CRANBROOK WA 6321
08 9834 3015
2CM

JOHN MINTY
3127 YANDAN ROAD
DANDARAGAN WA 6507
0427 512 017
mintyaccounts@yahoo.com
4JM

DEESIDE MUIRS
RICHARD SHUARD
3403 MUIR HIGHWAY
MANJIMUP WA 6258
08 9773 1260
deeside@activ8.net.au
2LU

RE & OM TREASURE & SONS
FERNHILL
P O BOX 10
WANDERING WA 6308
08 9884 1010
YSH

HOWARD JOHN TREVENEN
37 STONE CRES
DARLINGTON WA 6070
0403 054 162
trevenen@bigpond.net.au
2VJ

SARA & SCOTT WEIR
26 MALTRUP ROAD
DINNINUP WA 6244
0428 218 759
ssweir@iinet.net.au
2VW

JB & H WRINGE
PO BOX 823
DONNYBROOK WA 6251
0417 962 572
jbwringe@hotmail.com
4JW

JUNIOR STUD MEMBERS

NEW SOUTH WALES

SKYE BAXTER
13 VENUS CLOSE
CRANBROOK NSW 2749
0431 254 792
skymbaxter22@gmail.com
SVL

LEAH BENN
125 TOMKI BIGHT RD
GREENRIDGE NSW 2471
0437 005 302
jtbenn01@bigpond.com
LGA

JADA & JAY BUCHAN
1 CALLISTEMON CLOSE
COWRA NSW 2794
0427 203 795
jadabuchan@gmail.com
JJB

LIBERTY COOK
14724 GWYDIR HIGHWAY
SHANNON VALE NSW 2370
0487 412 507
kelly.cook2@tafensw.edu.au
ZLJ

TOBY HANNAH & MACKENZIE FLYNN
232 WAIKOM ROAD
KINGSPLAINS NSW 2799
0428 682 745
meljoy007@hotmail.com
THM

CHARLEE & COOPER GOULD
42 GOULD ROAD
GREENRIDGE NSW 2471
0416 354 061
bmgould007@bigpond.com
ZGX

CHELSEA GREEN
108N SOUTH STREET
WALCHA NSW 2354
0474 055 187
chelseagreen1203@gmail.com
CHE

ALBERT GREEN
108N SOUTH STREET
WALCHA NSW 2354
0417 941 315
bullenlisa_may@hotmail.com
ERT

ARTHUR WILLIAM GREEN
PO BOX 185
URANQUINTY NSW 2652
0400 570 758
info@summitlivestock.com.au
GWA

MICQUELLA GRIMA
HOPE HILL CATTLE CO
39 CALVERTS ROAD
ORCHARD HILLS NSW 2748
0474 108 577
micquellag03@yahoo.com.au
ZZG

RHONDA HARRINGTON
3055 BUNNDAN ROAD
BUNNAN NSW 2337
jcrural@outlook.com
WAB

GUS HARRINGTON
3055 BUNNAN ROAD
BUNNAN NSW 2337
jcrural@outlook.com
WBA

GEORGIA HARRINGTON
3055 BUNNAN ROAD
BUNNAN NSW 2337
0460 716 153
jcrural@outlook.com
WBT

CHARLI ISSANCHON
1519 GLENDON BROOK ROAD
GLENDON BROOK NSW 2330
0400 304 523
patissanchon@gmail.com
CSI

EMILY LARGE
3055 BUNNAN ROAD
BUNNAN NSW 2337
0460 716 153
jcrural@outlook.com
WBZ

MATILDA MCCOY
297 OLD COAST ROAD
DORRIGO NSW 2453
0447 627 665
coolibah07@bigpond.com
YBL

BIBIANNAH PEATTIE
29 PARK AVENUE
CUNDLETOWN NSW 2430
0499 164 464
b.peattie24@outlook.com
WBP

LAYLAH RYFFEL GOLDSMITH
123 RICKARD ROAD
WARRIMOO NSW 2774
0412 967 105
eric_ryffel@hotmail.com
ZLI

ADAM SCIBERRAS
22R DONNELLY ROAD
EUMUNGERIE NSW 2822
040 4777 4611
motorcross87@live.com.au
ZRX

TIA THOMAS
WILLANDRA
1011 CASSILIS ROAD
COOLAH NSW 2843
0418 746 895
tthomas@frensham.nsw.edu.au
WTI

MILLIE THOMPSON
GOONAMURRAH
1202 TORONDALE ROAD
BATHURST NSW 2795
0439 179 269
info@millahmurrah.com
WMT

OLIVIA THOMPSON
GOONAMURRAH
1202 TURONDALE ROAD
BATHURST NSW 2795
0439 179 269
info@millahmurrah.com
WOT

TWIGGY THOMPSON
GOONAMURRAH
1202 TURONDALE ROAD
BATHURST NSW 2795
0439 179 269
info@millahmurrah.com
WTT

FREYA WEISMANTEL
81 SHERWOOD ROAD
ALDAVILLA NSW2440
02 6562 6055
ZQW

QUEENSLAND

CHLOE ANDREASSEN
124 CHERRY TREE ROAD
KANIGAN QLD 4570
0474 759 960
chloe.and124@gmail.com
XCA

JESSICA BEDDOWS
1674 MURGON GAYNDAH ROAD
MURGON QLD 4605
07 4168 6061
Jessbeddows1405@gmail.com
ZOJ

LILA BURTON
4 FLINDERS STREET
CABARLAH QLD 4352
0417 226 624
lilajb08@icloud.com
XJB

H I A & A HANSON
PO BOX 267
MOURA QLD 4718
0498 349 463
hansonholdings@bigpond.com
HIA

BROOKE ISEPPI
'LEAFMORE' M/S 35
DALBY QLD 4405
0428 718 076 Brooke
gklivestock1@gmail.com
www.gklivestock.com
GKI

MACIE & WYATT ISEPPI
221 MULGOWIE ROAD
THORNTON QLD 4341
0487 718 823
ellendale1@gmail.com
MWI

TY MEEK
709 WYUNA ROAD
EMERALD QLD 4720
0428 747 902
zarabmeek@hotmail.com
DZT

MELITA PALMER
192 BRIAN PASTURES ROAD
GAYNDAH QLD 4625
0427 529 452
atilem192@gmail.com
UBE

KATRIA PALMER
192 BRIAN PASTURES ROAD
GAYNDAH QLD 4625
07 4161 1015
tonkapeppi26@gmail.com
XKP

ALLIE & LIBBY PERKINS
BRAESIDE
3331 DALBY-COOYAR ROAD
MOOLA QLD 4406
07 4167 8821
libbyperkins21@gmail.com
ZPP

SALLY ROBINSON
157 DIOTHS RD
UPPER YARRAMAN QLD 4614
0490 464 188
skrobinson26@icloud.com
VSK

JESSICA SALTER
376 DALBY NUNGIL ROAD
DALBY QLD 4405
0419 739 273
megansalter7@gmail.com
WJK

ELLA STANTON
24 MARGOO ROAD
GOOMERI QLD 4601
07 4168 7174
stantonfuelsupplies@live.com.au
BUR

JACK WILLIAMSON
112 EASTERN BRANCH ROAD
MOUNT STANLEY QLD 4306
0491 093 212
sugabagcreek@outlook.com
XAM

THOMAS ANDREW YORK
70 JACKSON-WANDOAN ROAD
JACKSON QLD 4426
0448 492 180
scyork@bigpond.com
ZYT

ZOE YORK
70 JACKSON-WANDOAN ROAD
JACKSON QLD 4426
0427 154 336
scyork@bigpond.com
ZYZ

SOUTH AUSTRALIA

ANGUS AND ALICE ALLEN
PO BOX 516
MT GAMBIER SA 5290
ZQI

HARRY BAKER
261 CONMURRA ROAD
FURNER SA 5280
08 8734 3012
hbaker@bakergroup.com.au
WHA

OLIVIA BAKER
261 CONMURRA ROAD
FURNER SA 5280
08 8734 3012
obaker@bakergroup.com.au
WOB

KEIRA CAMPAGNOLO
PO BOX 2275
MCLAREN VALE SA 5171
0412 120 935 (Vaughan)
savannahsimbrahs@gmail.com
ZXC

GRANT HIGH SCHOOL
C/- SCOTT CRAM
HOSKING AVENUE
MOUNT GAMBIER SA 5290
08 8726 3100
scott.cram856@schools.sa.edu.au
ZKQ

MOLLY LAMBORN
PO BOX 174
GUMERACHA SA 5233
08 8568 1875
wagnerlambornj@gmail.com
ZQL

BRYCE JACOB ROTHE
4679 RIDDOCH HWY
PADTHAWAY SA 5271
08 8765 5197
tolhverrae@bigpond.com
ZYZ

MATILDA ROTHE
C/- POST OFFICE
PADTHAWAY SA 5271
08 8765 5197
tolhverrae@bigpond.com
ZYR

TASMANIA

ETHAN FRANKCOMBE
PO BOX 226
SHEFFIELD TAS 7306
0437 794 198
ethanfrankcombe@icloud.com
ZEV

LILLI ROCKLIFF
PO BOX 155
SHEFFIELD TAS 7306
03 6491 1072
lillirockliff@outlook.com
ZQG

VICTORIA

JOHN & PENNY BUCHANAN
83 MILLER STREET
TONGALA VIC 3621
0429 771 591
rowlonpark@gmail.com
DJB

JACOB CANNING
178 TRIGGERS ROAD
LANG LANG VIC 3984
0416 216 951
ben@wattlewoodangus.com.au
ZWV

BEN GLOVER
75 HEADS RD
CATANI VIC 3981
0438 118 224
emilyscottsmith@icloud.com
XBG

MICHAEL KERR
1330 CALDERMEADE ROAD
MYAMYN VIC 3304
03 5578 2384
mavstar1965@gmail.com
ZAF

MATTHEW VOSPER
PO BOX 306
RIDDELLS CREEK VIC 3431
0499 395 214
mvospaa@gmail.com
ZXV

WEST AUSTRALIA

KEELY SMITH
13772 MUIR HWY
FOREST HILL WA 6324
0417 915 688
kildarragrazing@gmail.com
WFO

INDIANA SMITH
147A GLADSTONE ROAD
RIVERVALE WA 6103
0427 025 100
indianasmith2002@gmail.com
ZIS

OVERSEAS

KAI PHILLIP RIECKE
CABAÑA "LA TORCACITA"
PERU 345 5° D
C.A.B.A ARGENTINA C1067AAG
+54 011 4343 9193
piraymini@piraymini.com.ar
www.piraymini.com
OPM



Simmental
AUSTRALIA

CALENDAR OF EVENTS

JANUARY

Stock and Land Beef Week (VIC, SA, NSW)

FEBRUARY

Grangeburn Simmentals (VIC)

Mt Ararat Simmentals (VIC)

Woonallee Elite Production Bull & Female Sale (SA)

Rockhampton All Breeds (QLD)

Numurkah Beef Spectacular Show (VIC)

Brewer Beef Annual Simmental Sale (VIC)

Royal Canberra Show (ACT)

TAS Junior Beef Expo (TAS)

Willandra Simmentals (WA)

Tugulawa Simmentals (SA)

Yerwal Estate/Mt Mooney Simmentals (SA)

Lakeside Simmentals (SA)

MARCH

Bonnydale (WA)

WALSA Supreme Bull Sale (WA)

Blackall Black Stump Sale (QLD)

APRIL

Clay Gully Online Female Sale (QLD)

Stud Beef Handlers Camp (VIC)

Sydney Royal Show (NSW)

Royal Bathurst Show (NSW)

Slopes and Roland Black Simmentals (TAS)

Woonallee On Line Genetic semen & embryo sale (SA)

MAY

Tennysonvale (NSW)

ASBA AGM

JUNE

Northern Beef Week (NSW)

Ag Grow Field Days and Sale (QLD)

Simmental Opportunity Sale

JULY

QLD Simmental Bull Sale (QLD)

Barana Simmentals (NSW)

SA Junior Heifer Expo (SA)

Farm Fantastic Expo (QLD)

Southern Beef Week (NSW & VIC)

Casino All Breeds (NSW)

AUGUST

Lucrana (QLD)

Bonnydale QLD (QLD)

Clay Gully Bull Sale (QLD)

Mala-Daki Simmentals (NSW)
30 Year Anniversary Sale

Woonallee Tamworth Northern Black Bull Sale (NSW)

Brisbane Royal (Ekka) (QLD)

Southern Beef Week (QLD)

Ticoba Simmentals and Simbrahs (QLD)

Fairview Simmentals (QLD)

SEPTEMBER

Wormbete Simmentals (NSW)

Royal Melbourne Show (VIC)

Meldon Park Bull Sale (QLD)

Royal Perth Show (WA)

Royal Adelaide Show (SA)

Casa Toro Simmentals (QLD)

St Pauls Simmentals (NSW)

VC Simmentals (NSW)

Elite Cattle Co Bull Sale (QLD)

OCTOBER

Karragarra Simmentals (QLD)

Royal Geelong Show (VIC)

Royal Launceston (TAS)

Royal Hobart (TAS)

Victorian On Farm Challenge (VIC)

DECEMBER

Beefing up the Next Generation Junior Camp (QLD)

ASBA Office closed between Christmas and New Year – ASBA would like to wish everyone a very Merry Christmas and Happy New Year!



Simmental
AUSTRALIA

ADVERTISERS' INDEX

Barana	19
Casa Toro	39
Coolibah	82
Elite Cattle Co	47
GB Livestock	9
GDL	68
Glenanna	8
Grangeburn	37
Hobbs Livestock	2
Knox	17
Logie	31
Mavstar	43
St Pauls	41
Tennysonvale	21
Valley Creek	84
Willandra	3
Woonallee	45
World Wide Sires	49



COOLIBAH SIMMENTALS

Dorrigo, NSW 2453

Breeding Quality

(J - BAS 7)

*Traditional Simmental,
Black Simmental & Simangus Cattle*

Inspections always welcome



Sandy, Gary & Madi Morgan
0447 627 665
coolibah07@bigpond.com

2023 has been a busy year!

Pear S434



Pear S434 topped our March Sale at \$11,000. In all 45 females of 45 offered, all 5 bulls and 8 of 10 embryos lots sold to all mainland states.

Surfing S470



Surfing S470 sold for \$22,000 to top our offering of 13 bulls as an invited guest to the Elite Cattle Co. Sale in Queensland.

St Pauls Trucks T483



St Pauls Trucks T483 triumphed at the Royal Adelaide Show where over 200 steers featured. Owned by Glental Partnership, Trucks won Reserve Lightweight Champion of Hoof, Heavy Domestic Champion Carcase, Grand Champion Purebred Carcase.

Pear R412



Pear R412 with calf topped our September Sale at \$11,000. In all 23 females, 3 bulls and 4 of 6 embryo lots sold to all 6 states.

In the paddock the first of the imported USA Embryos have been born, sired by KBHR Honor H060 and LBR Genesis. Domestic calves feature many sired by RF Caliber, Gibbs Essential, WS Proclamation, LCDR Witness and Bonnydale Nukara.

SALES FOR 2024

Monday 16th September:

St Pauls Genetics Female, Bull and Genetic Sale.

Thursday 5th September:

14 Bulls on offer at the Elite Cattle Co. Sale, Queensland.

PRIVATE SALE

- BULLS
- EMBRYOS
- SEMEN



Bill and Susan Cornell
Henty NSW
0428 293 498
billcornell@bigpond.com

EMBRYOS AVAILABLE BY



R PLUS MANDATE 1044J



RF CALIBER 014G



SPRING CREEK LAUNCH 110E



FGAF
Kanana's
096F
X

FGAF
Electric Avenue
140E



SVS
Bells
808F
X

RF
Certainly Flirtin
532C



VC CREAM SODA S031

PROGENY AVAILABLE now privately

PROGENY AVAILABLE
now privately



follow us on



STUART AND SAMANTHA MOECK Binda, New South Wales
0419465242 0423249746

