



**TOPWEIGHT
SIMMENTALS**



AuctionsPlus

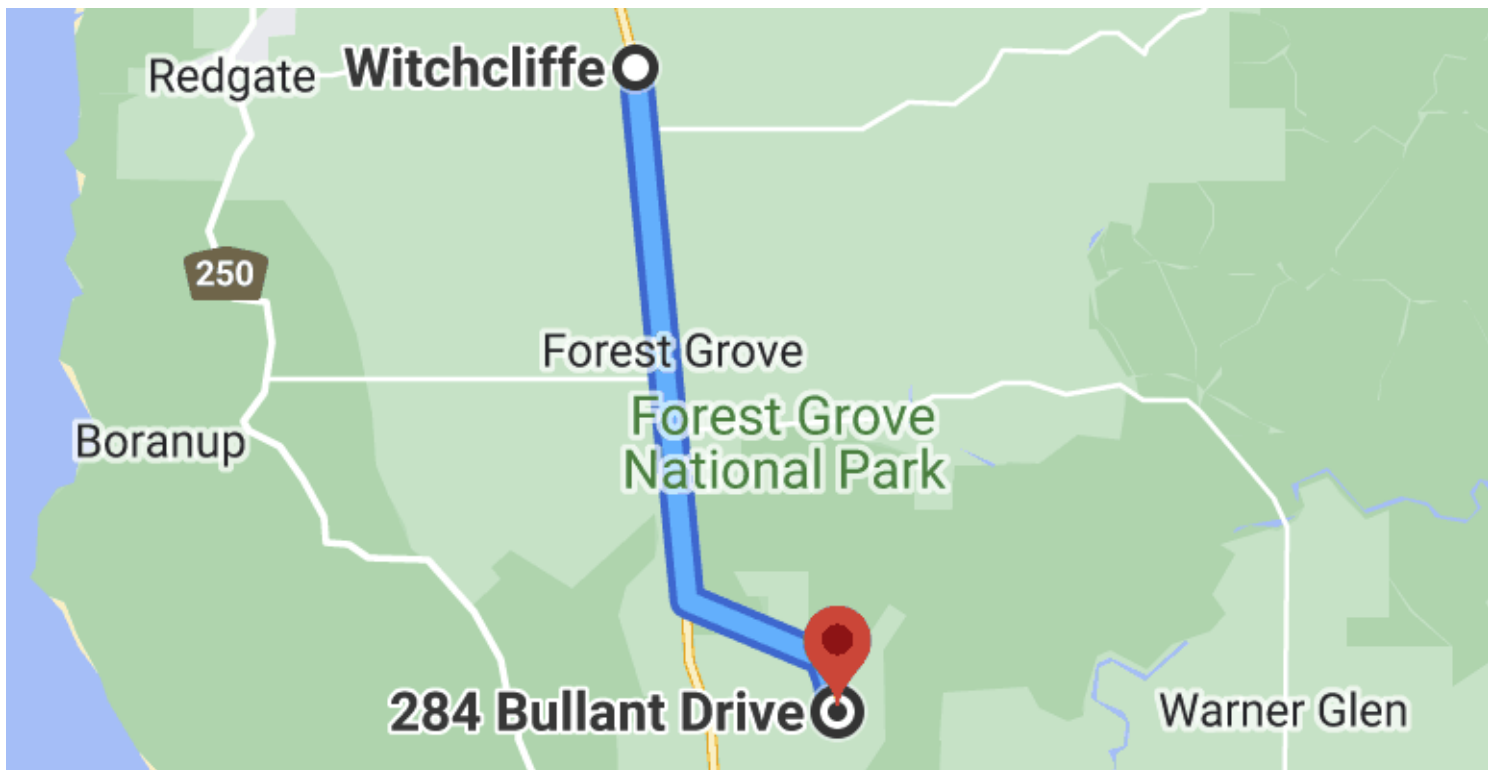
ON FARM GRASS FED YEARLING BULL SALE
INSPECTIONS 11AM SALE STARTS 1PM
9th FEBRUARY 2024
284 BULLANT DRIVE, FOREST GROVE WA



TOPWEIGHT SIMMENTALS

DIRECTIONS

Topweight Simmentals is located 20 minutes South of the Margaret River town. From Bussel Highway take a left onto Bullant Drive, Forest Grove. The property is approximately 3km of gravel before arriving at Topweight. Follow the drive past sheds and you will see the yards ahead.



SALE DAY PHONES

Sam Weightman
0427 593 095

Alec Williams (Elders agent)
0428 717 447

Brendan Millar (Elders agent)
0439 482 817

**Join us for a sausage sizzle lunch
beginning at 12 pm, just inside the shed!**

OUR PHILOSOPHY

Topweight Simmentals aim to breed animals that are early maturing, docile, fertile and easy doing. With a large focus on herd health and pasture management we are able to achieve optimal growth whilst maintaining a grass fed diet. Having our herds graze on quality mixed crops throughout the year our herds have achieved exceptional growth whilst improving the land and soil as a whole. This package has given us and our clients great growth and longevity of both the bull itself and offspring.



Our bulls have grown up together from grass grown on the property and have been selected from over 70 bull calves with culling starting at day one. The whole herd is treated in the same way with commercial principals at the forefront. Birthweight, feet, temperament ,type and fertility all take a part in the animals selection for sale or breeding purposes.

We believe our 100% grass fed bulls will work for you.

Healthcare: All bulls have been vaccinated with both injections of 7in1, pestiguard, vibrovax, marksmin and have returned a fecal egg count under the threshold requiring drenching (tested by Elders Bunbury). Bulls are BVDV negative and passed their semen morphology test. All records available upon request.

We welcome and encourage anyone to come and view our bulls on the property at any time
Please contact Sam 0427 593 095

ONLINE BIDDING

This sale will be interfaced with Auctions Plus so even if you can't get to the sale on the day you will still be able to purchase a bull online.

Jump online at <https://auctionsplus.com.au/register> to set up an account.



LOT #
1



TOPPU026 D.O.B 04/02/23

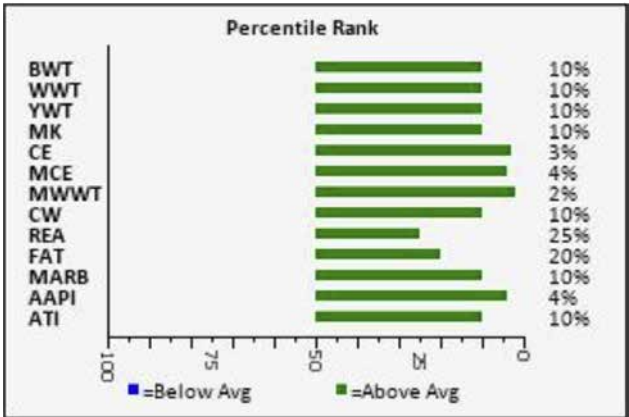
Sire: **WEEPQ073** WOONALLEE KIWI Q73 (P)(AI)
 ┌─── **PEDPX1936** KERRAH XFACTOR AX187
 └─── **IMNPL859** KERRAH D859 (P)
 ┌─── **PED3X1943** KERRAH B59
 └─── **IPLPF299** GLEN ANTHONY Y-ARTA AY02 (P)(ET)
 ┌─── **WEEPN095** WOONALLEE DAISY N95 (P)(AI)
 └─── **WEEPL004** WOONALLEE DAISY L4 (P)
 ┌─── **AJYPF019** WILLANDRA FERDINAND (H)
 └─── **AJYJP054** WILLANDRA JAMAICA (H)
 └─── **AJYPB070** WILLANDRA OLIVE B70 (H)
 Dam: **TOPPM064** TOPWEIGHT ALICE M064 (P)
 ┌─── **WEEPB087** WOONALLEE BUDDY (H)(ET)(AI)
 └─── **TOPPJ054** TOPWEIGHT ALICE J54
 └─── **TOPPC114** TOPWEIGHT ALICE 107

Comments: TOPPU026 is an AI calf from Woonallee Kiwi packed with New Zealand genetics. He has been a standout since day one he is from a great family line certain to add growth to any herd. He is as soft and thick as they come with tremendous feet to match. EPD's are phenomenal being in the top 10% for all growth figures and birthweight and the top 3% for calving ease.

	CE	BW	WW	YW	Milk	MCE	MWWT	STAY	DOC
EPD	11.6	2.6	88.3	124.9	34.8	7.8	78.9	16.2	13.7
Acc	0.18	0.32	0.26	0.24	0.09	0.10	0.15	0.10	0.19
%RK	3	10	10	10	10	4	2	25	10

	AAPI	ATI	API	TI
Index	72.38	63.86	130.25	83.61
%RK	4	10	1	1

	CW	REA	FAT	MARB	YG
EPD	31.0	0.87	-0.101	0.07	-0.44
Acc	0.15	0.13	0.07	0.10	0.10
%RK	10	25	20	10	85



Purchaser.....

Price \$.....

**LOT #
2**



TOPPU057 D.O.B 18/02/23

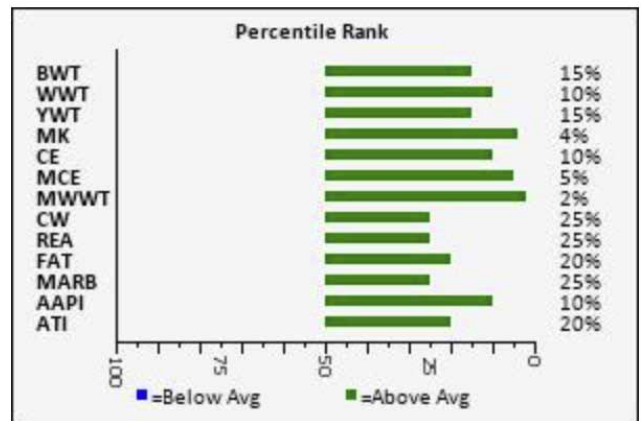
Sire: **AJYPL017** WILLANDRA LEE MARVIN (P)
 AJYPP064 WILLANDRA PRESIDENT (P)
 AJYPF115 WILLANDRA OLIVE F115 (H)
PDJPS019 TULLAMORE PARK SERENGETI S019 (P)
 AJYPK132 WILLANDRA KINGSTON (P)
 PDJPP016 TULLAMORE PARK PEACE (P)
 PDJJP005 TULLAMORE PARK JOY (H)
 WEEPZ048 WOONALLEE VISION Z48 (H)(AI)
 TOPPG089 TOPWEIGHT GIMMICK
 TOPPC065 TOPWEIGHT BETTINA 374 (P)
Dam: **TOPPL094** TOPWEIGHT BETTINA L94
 AJYPE134 WILLANDRA EXCALIBUR (P)
 TOPPJ171 TOPWEIGHT BETTINA J171
 TOPPF099 TOPWEIGHT BETTINA F99

Comments: This poll sire is a very complete bull from head to tail with his EPD's being well above average across the board. He moves very well on great feet with plenty of muscle and capacity with perfect pigmentation. The first Serengeti son we have offered and matched with his dam L94 who ranks very highly within our herd.

	CE	BW	WW	YW	Milk	MCE	MWWT	STAY	DOC
EPD	10.3	3.6	86.3	118.2	35.9	7.4	79.1	18.6	10.9
Acc	0.19	0.32	0.26	0.24	0.10	0.11	0.15	0.10	0.19
%RK	10	15	10	15	4	5	2	5	25

	AAPI	ATI	API	TI
Index	67.67	50.38	125.11	78.61
%RK	10	20	2	3

	CW	REA	FAT	MARB	YG
EPD	25.6	0.87	-0.102	-0.02	-0.46
Acc	0.16	0.14	0.08	0.09	0.11
%RK	25	25	20	25	75



Purchaser.....

Price \$.....

**LOT #
3**



TOPPU088 D.O.B 04/03/23

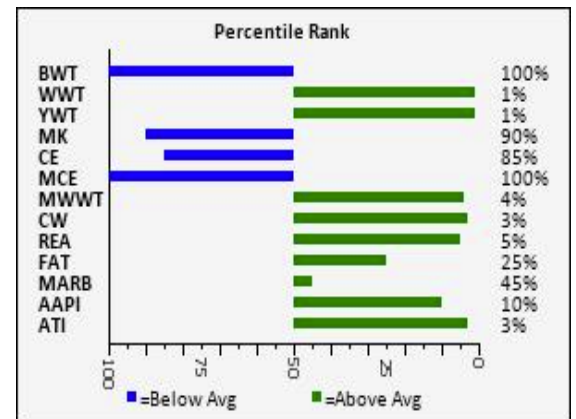
Sire: **AJYPP064** WILLANDRA PRESIDENT (P)
 └─ **TOPPJ133** TOPWEIGHT JACK ARTA (P)
 └─ **AJYPL017** WILLANDRA LEE MARVIN (P)
 └─ **AJYPJ092** WILLANDRA MYSTIC J92
 └─ **AJYPZ053** WILLANDRA ZORBA (H)
 └─ **AJYPF115** WILLANDRA OLIVE F115 (H)
 └─ **AJYPV019+00** QUAINDERING OLIVE V19 (H)
 └─ **AJYXP031** WILLANDRA XIAN (H)
 └─ **AJYPE134** WILLANDRA EXCALIBUR (P)
 └─ **AJYPZ026** WILLANDRA DIANA Z26 (P)
 Dam: **TOPPM052** TOPWEIGHT BETTINA M052
 └─ **WEEPB087** WOONALLEE BUDDY (H)(ET)(AI)
 └─ **TOPPH155** TOPWEIGHT BETTINA H155
 └─ **TOPPD008** TOPWEIGHT BETTINA D008 (TW)

TOPPU088- The first President son we have offered for sale. This high capacity soft well muscled long and docile bull has been in the top few for live weight since 200 days. With exceptional growth EPD's in the top 1% for weaning and yearling weights and top 3% for carcass weights.

	CE	BW	WW	YW	Milk	MCE	MWWT	STAY	DOC
EPD	2.4	8.6	112.1	152.3	21.0	-0.3	77.1	16.4	13.0
Acc	0.17	0.33	0.27	0.26	0.10	0.12	0.16	0.11	0.18
%RK	85	100	1	1	90	100	4	20	10

	AAPI	ATI	API	TI
Index	67.78	75.72	107.88	83.47
%RK	10	3	20	1

	CW	REA	FAT	MARB	YG
EPD	38.3	1.03	-0.104	-0.07	-0.47
Acc	0.16	0.16	0.09	0.11	0.12
%RK	3	5	25	45	70



Purchaser.....

Price \$.....

LOT #

4



TOPPU001 D.O.B 24/01/23

Sire: **IMNPM2009** WAIKITE AE2009 (P)
 ┌─── **IMNPC158** RISSINGTON NEW STANDARD AU158 (P)
 └─── **PEDPX1946** GLENSIDE ATOMIC A5
 ┌─── **PEDPX1945** GLENSIDE AW806
 └─── **PEDPX1949** WAIKITE AY0065
 ┌─── **PEDPX1953** WAIKITE AA2238
 └─── **PEDPX1952** WAIKITE AW144
 ┌─── **WEEPZ048** WOONALLEE VISION Z48 (H)(AI)
 └─── **TOPPG089** TOPWEIGHT GIMMICK
 └─── **TOPPC065** TOPWEIGHT BETTINA 374 (P)

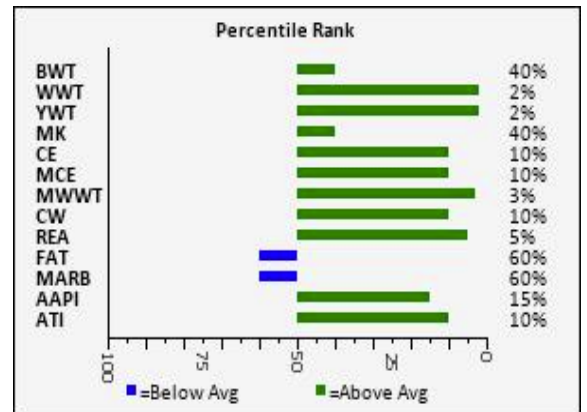
Dam: **TOPPN072** TOPWEIGHT ALICE N072
 ┌─── **AJYPE134** WILLANDRA EXCALIBUR (P)
 └─── **TOPPH186** TOPWEIGHT ALICE H186
 └─── **TOPPA052** TOPWEIGHT ALICE 91

TOPPU001- U1 is the only sire from the New Zealand bred Waikite AE2009 in the sale. He was the second heaviest calf from the first weight taken at 247 days at 427kg. His EPD's reflect this being in the top 2% for weaning and yearling weights while still being in the top 10% for calving ease and below average for birthweight. He has been a stand out in this draft for temperament.

	CE	BW	WW	YW	Milk	MCE	MWWT	STAY	DOC
EPD	9.3	5.2	97.7	135.2	28.7	6.7	77.6	12.2	14.1
Acc	0.17	0.31	0.26	0.24	0.08	0.10	0.14	0.11	0.20
%RK	10	40	2	2	40	10	3	70	5

	AAPI	ATI	API	TI
Index	63.86	66.65	108.16	80.77
%RK	15	10	20	2

	CW	REA	FAT	MARB	YG
EPD	32.5	1.02	-0.117	-0.11	-0.53
Acc	0.15	0.13	0.09	0.11	0.11
%RK	10	5	60	60	30



Purchaser.....

Price \$.....

LOT #
5



TOPPU056 D.O.B 18/02/23

Sire: **AJYPP064** WILLANDRA PRESIDENT (P)
 └─ **TOPPJ133** TOPWEIGHT JACK ARTA (P)
 └─ **AJYPL017** WILLANDRA LEE MARVIN (P)
 └─ **AJYPJ092** WILLANDRA MYSTIC J92
 └─ **AJYPZ053** WILLANDRA ZORBA (H)
 └─ **AJYPF115** WILLANDRA OLIVE F115 (H)
 └─ **AJYPV019+00** QUAINDERING OLIVE V19 (H)
 └─ **PEDBX1500** BHR DOORN G629E
 └─ **WEEPB087** WOONALLEE BUDDY (H)(ET)(AI)
 └─ **PEDBX1707** BHR AZMERA SA M243E

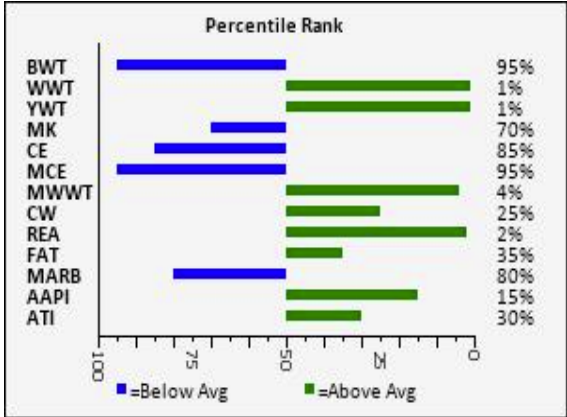
Dam: **TOPPL098** TOPWEIGHT ALICE L98
 └─ **AJYPE134** WILLANDRA EXCALIBUR (P)
 └─ **TOPPH186** TOPWEIGHT ALICE H186
 └─ **TOPPA052** TOPWEIGHT ALICE 91

Lot5-TOPPU056- U56 This sleek coated extra-long positive muscled poll sire is a definite eye catcher and no surprise being a son of L98 who is a proven high performance dam. Top 1% for yearling and weaning weights as is consistent with President calves.

	CE	BW	WW	YW	Milk	MCE	MWWT	STAY	DOC
EPD	2.6	7.7	105.9	140.3	23.9	0.6	76.9	18.2	13.1
Acc	0.18	0.33	0.26	0.25	0.10	0.12	0.15	0.11	0.19
%RK	85	95	1	1	70	95	4	10	10

	AAPI	ATI	API	TI
Index	64.12	45.61	105.08	78.77
%RK	15	30	25	3

	CW	REA	FAT	MARB	YG
EPD	25.0	1.11	-0.108	-0.18	-0.56
Acc	0.17	0.15	0.08	0.10	0.12
%RK	25	2	35	80	15



Purchaser.....

Price \$.....

**LOT #
6**



TOPPU079 D.O.B 27/02/23

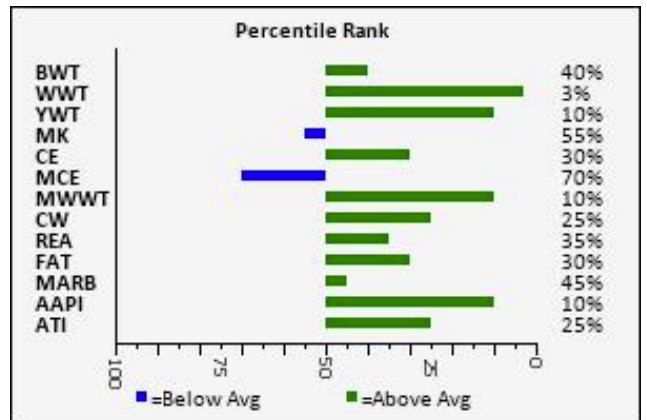
Sire: **AJYPP064** WILLANDRA PRESIDENT (P)
 └─ **AJYPL017** WILLANDRA LEE MARVIN (P)
 └─ **AJYPJ092** WILLANDRA MYSTIC J92
 └─ **AJYPZ053** WILLANDRA ZORBA (H)
 └─ **AJYPF115** WILLANDRA OLIVE F115 (H)
 └─ **AJYPV019+00** QUANDERING OLIVE V19 (H)
 └─ **WEEPZ048** WOONALLEE VISION Z48 (H)(AI)
 └─ **TOPPG089** TOPWEIGHT GIMMICK
 └─ **TOPPC065** TOPWEIGHT BETTINA 374 (P)
 Dam: **TOPPQ143** TOPWEIGHT BETTINA Q143 (P)
 └─ **AJYPE134** WILLANDRA EXCALIBUR (P)
 └─ **TOPPH064** TOPWEIGHT BETTINA H064 (P)
 └─ **TOPPB032** TOPWEIGHT BETTINA 326 (P)

TOPP079- Another poll President son. He is a smooth shouldered sire with great temperament, length ,feet and carcass. Top 3% for weaning weight and top 10% for yearling weight.

	CE	BW	WW	YW	Milk	MCE	MWWT	STAY	DOC
EPD	6.9	5.2	92.7	125.4	26.5	2.7	72.9	16.6	13.0
Acc	0.18	0.33	0.26	0.25	0.10	0.12	0.15	0.10	0.19
%RK	30	40	3	10	55	70	10	20	10

	AAPI	ATI	API	TI
Index	64.99	48.17	112.31	77.23
%RK	10	25	10	4

	AAPI	ATI	API	TI
Index	64.99	48.17	112.31	77.23
%RK	10	25	10	4



Purchaser.....

Price \$.....

LOT #
7



TOPPU014 D.O.B 31/01/23

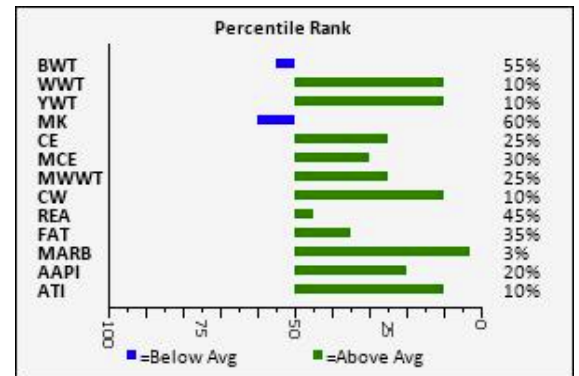
Sire: **WEEPQ073** WOONALLEE KIWI Q73 (P)(AI)
 ┌─── **IMNPL859** KERRAH D859 (P)
 │ └─── **PEDPX1936** KERRAH XFACTOR AX187
 │ └─── **PED3X1943** KERRAH B59
 └─── **IPLPF299** GLEN ANTHONY Y-ARTA AY02 (P)(ET)
 ┌─── **WEEPN095** WOONALLEE DAISY N95 (P)(AI)
 │ └─── **WEEPL004** WOONALLEE DAISY L4 (P)
 └─── **AJYPX031** WILLANDRA XIAN (H)
 ┌─── **AJYPE134** WILLANDRA EXCALIBUR (P)
 │ └─── **AJYPZ026** WILLANDRA DIANA Z26 (P)
 Dam: **TOPPJ195** TOPWEIGHT BETTINA J195
 ┌─── **WEEPZ048** WOONALLEE VISION Z48 (H)(AI)
 └─── **TOPPF071** TOPWEIGHT BETTINA F071
 ┌─── **TOPPB110** TOPWEIGHT BETTINA 350

TOPPU014-U14 another Kiwi Q73 son he is a docile heavily muscled sire with extra length and plenty of muscle in all the right places. He is in the top 10% for yearling and weaning weights out of J195 a very long deep bodied cow a favourite within the herd at almost 11 years old.

	CE	BW	WW	YW	Milk	MCE	MWWT	STAY	DOC
EPD	7.1	5.9	84.7	122.0	25.9	4.9	68.3	12.7	13.0
Acc	0.15	0.21	0.18	0.18	0.09	0.10	0.12	0.11	0.10
%RK	25	55	10	10	60	30	25	65	10

	AAPI	ATI	API	TI
Index	60.21	61.06	113.38	77.25
%RK	20	10	10	4

	CW	REA	FAT	MARB	YG
EPD	30.5	0.79	-0.108	0.13	-0.44
Acc	0.13	0.12	0.08	0.11	0.10
%RK	10	45	35	3	85



Purchaser.....

Price \$.....

LOT #
8



TOPPU066 D.O.B 21/02/23

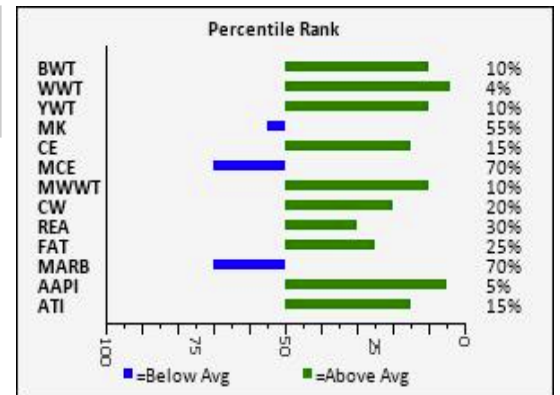
Sire: **AJYPP064** WILLANDRA PRESIDENT (P)
 ─── **TOPPJ133** TOPWEIGHT JACK ARTA (P)
 ─── **AJYPL017** WILLANDRA LEE MARVIN (P)
 ─── **AJYPJ092** WILLANDRA MYSTIC J92
 ─── **AJYPZ053** WILLANDRA ZORBA (H)
 ─── **AJYPF115** WILLANDRA OLIVE F115 (H)
 ─── **AJYPV019+00** QUANDERING OLIVE V19 (H)
 ─── **AJYPF019** WILLANDRA FERDINAND (H)
 ─── **AJYJP054** WILLANDRA JAMAICA (H)
 ─── **AJYPB070** WILLANDRA OLIVE B70 (H)
 Dam: **TOPPM023** TOPWEIGHT BRIDGET M023
 ─── **WEEPF009** WOONALLEE FLAMBOYANT (P)
 ─── **TOPPJ199** TOPWEIGHT BRIDGET J199 (P)
 ─── **TOPPC039** TOPWEIGHT BRIDGET 82

TOPPU066- This high capacity President son is full of muscle with extra length and plenty of style to match sure to add extra weight to your calves. Top 4% for weaning weight, top 10% for yearling weight, great calving ease and birthweight figures to match. Out of M23 who is a extraordinary cow and has a great figure set herself making her son a reliable choice.

	CE	BW	WW	YW	Milk	MCE	MWWT	STAY	DOC
EPD	8.7	3.3	91.2	121.6	26.8	2.6	72.4	19.0	11.7
Acc	0.20	0.34	0.27	0.26	0.11	0.12	0.16	0.10	0.20
%RK	15	10	4	10	55	70	10	3	15

	AAPI	ATI	API	TI
Index	70.82	53.81	118.88	77.47
%RK	5	15	4	4

	CW	REA	FAT	MARB	YG
EPD	26.6	0.85	-0.103	-0.14	-0.46
Acc	0.17	0.15	0.08	0.10	0.12
%RK	20	30	25	70	75



Purchaser.....

Price \$.....

LOT #
9



TOPPU047 D.O.B 12/02/23

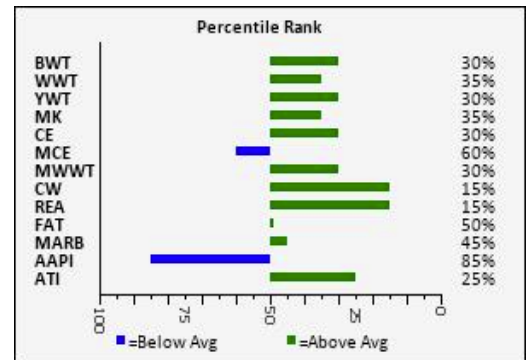
Sire: **ZPTPP010** MUBARN PABLO'S PRIDE (P)(ET)(AI)
 ── **IMCPH020** DOUBLE BAR D SPITFIRE 20X (P)
 ── **IMCPH181** STARWEST TOTAL VALUE (P)
 ── **PEDBX926** PHS POLLED WINFALL 27W
 ── **AJYPG041** WILLANDRA GOMEZ (P)
 ── **WEEKP165** WOONALLEE K165 (P)
 ── **WEEKP126** WOONALLEE LUCY G126 (P)
 ── **AJYPW078** QUAINDERING WRIGHT (H)
 ── **TOPPL020** TOPWEIGHT LIKELY LAD L20
 ── **TOPPJ024** TOPWEIGHT BETTINA J24
 Dam: **TOPPN084** TOPWEIGHT BRIDGET N084
 ── **TOPPG089** TOPWEIGHT GIMMICK
 ── **TOPPL006** TOPWEIGHT BRIDGET L6
 ── **TOPPJ199** TOPWEIGHT BRIDGET J199 (P)

TOPPU047- The only poll blonde sire in the sale but what a cracker he is. He has great feet, moves well with a great carcass, smooth shoulder and a smooth muscle pattern. Well above average growth EPD's and from a dam in the top 2% of the breed for birthweight and calving ease.

	CE	BW	WW	YW	Milk	MCE	MWWT	STAY	DOC
EPD	6.8	4.8	75.0	109.3	28.9	3.4	66.4	15.0	1.7
Acc	0.19	0.33	0.26	0.25	0.10	0.13	0.15	0.11	0.20
%RK	30	30	35	30	35	60	30	35	100

	AAPI	ATI	API	TI
Index	32.59	46.98	105.41	68.34
%RK	85	25	25	25

	CW	REA	FAT	MARB	YG
EPD	27.5	0.93	-0.113	-0.08	-0.51
Acc	0.16	0.14	0.09	0.11	0.11
%RK	15	15	50	45	40



Purchaser.....

Price \$.....

**LOT #
10**



TOPPU034 D.O.B 07/02/23

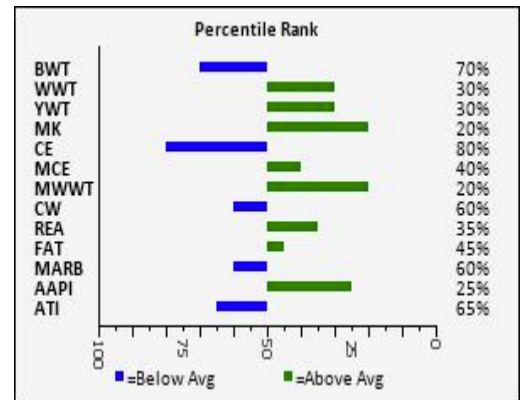
Sire: **AJYPR133** WILLANDRA RIMFIRE (P)
 └─ **WEPC120** WOONALLEE BHR TORNADO (P)(ET)(AI)
 └─ **WEPC087** WOONALLEE VASTI C87 (H)(ET)(AI)
 └─ **WEPC092** WOONALLEE JERICHO (P)
 └─ **AJYPE021** WILLANDRA EDWIN MOSES (H)(TW)
 └─ **AJYPE147** WILLANDRA OLIVE E147 (H)
 └─ **AJYPG119** WILLANDRA OLIVE G119 (H)
 └─ **WEPCB087** WOONALLEE BUDDY (H)(ET)(AI)
 └─ **TOPPM083** TOPWEIGHT M083
 └─ **TOPPH056** TOPWEIGHT ALICE H56
 Dam: **TOPPR101** TOPWEIGHT ALICE R101
 └─ **TOPPG089** TOPWEIGHT GIMMICK
 └─ **TOPPN072** TOPWEIGHT ALICE N072
 └─ **TOPPH186** TOPWEIGHT ALICE H186

TOPPU034- The first son to Rimfire to be offered, this moderate framed sire packs plenty of muscle length and a sleek perfectly marked soft coat. Well above average for all growth figures

	CE	BW	WW	YW	Milk	MCE	MWWT	STAY	DOC
EPD	3.1	6.4	76.1	108.4	31.7	4.4	69.8	17.2	12.2
Acc	0.18	0.31	0.25	0.23	0.09	0.10	0.14	0.09	0.19
%RK	80	70	30	30	20	40	20	15	15

	AAPI	ATI	API	TI
Index	56.87	27.93	99.79	65.38
%RK	25	65	35	40

	CW	REA	FAT	MARB	YG
EPD	17.1	0.84	-0.112	-0.12	-0.52
Acc	0.15	0.13	0.08	0.10	0.11
%RK	60	35	45	60	35



Purchaser..... Price \$.....

**LOT #
11**



TOPPU142 D.O.B 15/04/23

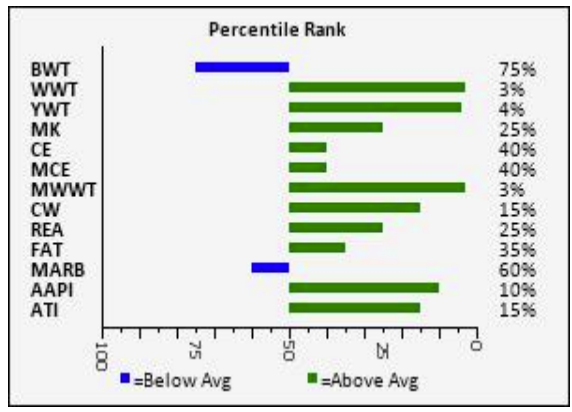
Sire: **AJYPL017** WILLANDRA LEE MARVIN (P)
AJYPP064 WILLANDRA PRESIDENT (P)
AJYPF115 WILLANDRA OLIVE F115 (H)
PDJPS019 TULLAMORE PARK SERENGETI S019 (P)
AJYPK132 WILLANDRA KINGSTON (P)
PDJPP016 TULLAMORE PARK PEACE (P)
PDJJP005 TULLAMORE PARK JOY (H)
WEEPZ048 WOONALLEE VISION Z48 (H)(AI)
TOPPG089 TOPWEIGHT GIMMICK
TOPPC065 TOPWEIGHT BETTINA 374 (P)
Dam: **TOPPP182** TOPWEIGHT BETTINA P182
WEEPB087 WOONALLEE BUDDY (H)(ET)(AI)
TOPPG130 TOPWEIGHT BETTINA G130
TOPPB040 TOPWEIGHT BETTINA 331

TOPPU142- A poll Serengeti son is the youngest in the sale born the 15/4/23 being only 300 days old on sale day. He has grown into a very powerful young sire with great feet, muscling and marking. Extra length frame and muscle will add plenty of weaning weight to his calves

	CE	BW	WW	YW	Milk	MCE	MWWT	STAY	DOC
EPD	5.8	6.7	94.6	130.2	30.9	4.3	78.2	18.6	10.9
Acc	0.18	0.32	0.26	0.25	0.10	0.10	0.15	0.10	0.19
%RK	40	75	3	4	25	40	3	5	25

	AAPI	ATI	API	TI
Index	66.03	57.33	111.93	76.37
%RK	10	15	10	5

	CW	REA	FAT	MARB	YG
EPD	29.8	0.89	-0.108	-0.11	-0.47
Acc	0.14	0.14	0.08	0.09	0.11
%RK	15	25	35	60	70



Purchaser.....

Price \$.....

**LOT #
12**



TOPPU136 D.O.B 08/04/23

Sire: **ZPTPP010** MUBARN PABLO'S PRIDE (P)(ET)(AI)
 ── **IMCPF020** DOUBLE BAR D SPITFIRE 20X (P)
 ── **IMCPH181** STARWEST TOTAL VALUE (P)
 ── **PEDBX926** PHS POLLED WINFALL 27W
 ── **AJYPG041** WILLANDRA GOMEZ (P)
 ── **WEEPK165** WOONALLEE K165 (P)
 ── **WEEPG126** WOONALLEE LUCY G126 (P)
 ── **WEEPZ048** WOONALLEE VISION Z48 (H)(AI)
 ── **TOPPG089** TOPWEIGHT GIMMICK
 ── **TOPPC065** TOPWEIGHT BETTINA 374 (P)

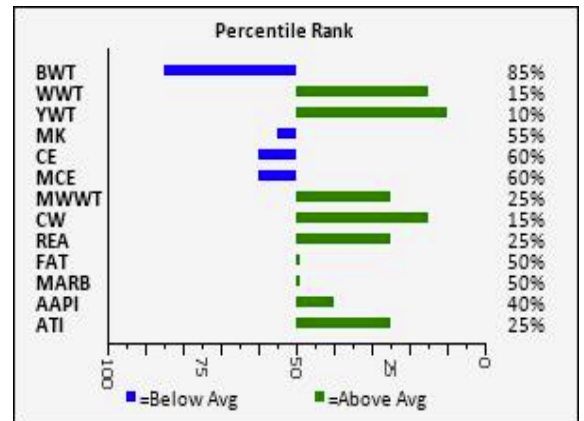
Dam: **TOPPQ195** TOPWEIGHT BETTINA Q195
 ── **TOPPG057** TOPWEIGHT GALAHAD
 ── **TOPPJ024** TOPWEIGHT BETTINA J24
 ── **TOPPG130** TOPWEIGHT BETTINA G130

TOPPU136- This poll Pablo son has all the length depth and muscle one could want, while fitting into a very moderate frame. The second youngest bull in the sale at 307 days old, proving his early maturity credentials. Top 15% for weaning weight and top 10% for yearling weights.

	CE	BW	WW	YW	Milk	MCE	MWWT	STAY	DOC
EPD	4.3	7.1	83.2	121.7	26.7	3.3	68.3	15.3	9.5
Acc	0.18	0.32	0.26	0.25	0.13	0.12	0.17	0.11	0.20
%RK	60	85	15	10	55	60	25	30	40

	AAPI	ATI	API	TI
Index	49.91	49.16	101.12	69.39
%RK	40	25	35	20

	CW	REA	FAT	MARB	YG
EPD	27.7	0.89	-0.114	-0.09	-0.49
Acc	0.17	0.14	0.09	0.12	0.12
%RK	15	25	50	50	50



Purchaser.....

Price \$.....

**LOT #
13**



TOPPU052 D.O.B 15/02/23

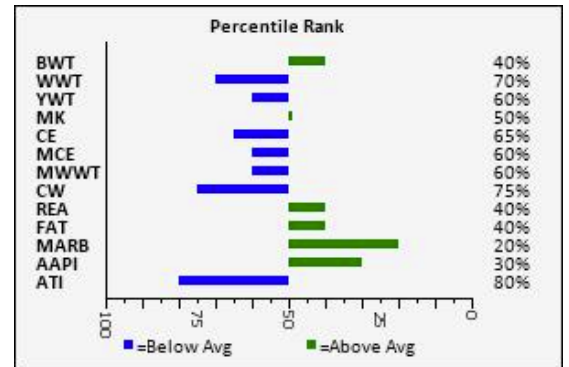
Sire: **AJYPR133** WILLANDRA RIMFIRE (P)
 ┌─── **WEPC120** WOONALLEE BHR TORNADO (P)(ET)(AI)
 └─── **WEEPJ092** WOONALLEE JERICO (P)
 ┌─── **WEPC087** WOONALLEE VASTI C87 (H)(ET)(AI)
 └─── **AJYPE021** WILLANDRA EDWIN MOSES (H)(TW)
 ┌─── **AJYPG119** WILLANDRA OLIVE G119 (H)
 └─── **AJYPE147** WILLANDRA OLIVE E147 (H)
 ┌─── **WEPEG068** WOONALLEE GENUINE (H)
 └─── **AJYPK043** WILLANDRA KNAVE (H)
 ┌─── **AJYPA136** WILLANDRA ELENA A136 (P)
 └─── **AJYPA083** WILLANDRA AWESOME (H)
 ┌─── **TOPPH142** TOPWEIGHT UND H142
 └─── **TOPPE032** TOPWEIGHT UND E032 (P)

TOPPU052- This bull is absolutely packed with muscle in a moderate early maturing frame with great feet and extra width over his topline. He has perfect markings and a placid nature.

	CE	BW	WW	YW	Milk	MCE	MWWT	STAY	DOC
EPD	3.9	5.3	67.4	98.1	27.5	3.2	61.2	17.4	11.6
Acc	0.18	0.31	0.25	0.23	0.10	0.12	0.15	0.10	0.20
%RK	65	40	70	60	50	60	60	15	20

	AAPI	ATI	API	TI
Index	54.33	20.56	106.64	64.27
%RK	30	80	20	45

	CW	REA	FAT	MARB	YG
EPD	13.7	0.81	-0.110	0.00	-0.51
Acc	0.15	0.14	0.08	0.09	0.11
%RK	75	40	40	20	40



Purchaser.....

Price \$.....

**LOT #
14**



TOPPU110 D.O.B 12/03/23

Sire: **ZPTPP010** MUBARN PABLO'S PRIDE (P)(ET)(AI)
 ┌─── **IMCPF020** DOUBLE BAR D SPITFIRE 20X (P)
 ┌─── **IMCPH181** STARWEST TOTAL VALUE (P)
 └─── **PEDBX926** PHS POLLED WINFALL 27W
 ┌─── **AJYPG041** WILLANDRA GOMEZ (P)
 └─── **WEEPK165** WOONALLEE K165 (P)
 └─── **WEEPG126** WOONALLEE LUCY G126 (P)
 └─── **WEEPG068** WOONALLEE GENUINE (H)
 ┌─── **AJYPK043** WILLANDRA KNAVE (H)
 └─── **AJYPA136** WILLANDRA ELENA A136 (P)

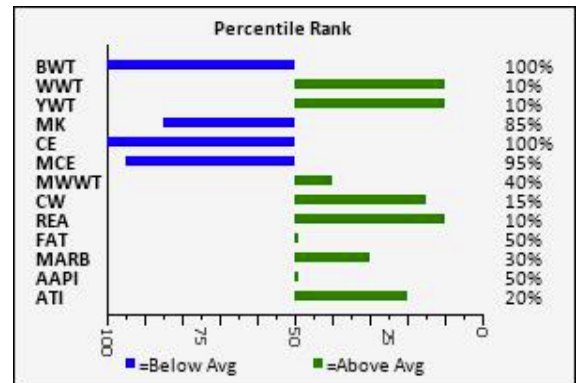
Dam: **TOPPP038** TOPWEIGHT UND P38
 ┌─── **WEEPB087** WOONALLEE BUDDY (H)(ET)(AI)
 └─── **TOPPL076** TOPWEIGHT UND L76
 └─── **TOPPH033** TOPWEIGHT UND H33

TOPPU110- This poll Pablo son is much like the previous lot, he is full of muscle with great width from head to tail in a moderate frame with great markings. Top 10% for weaning and yearling weights.

	CE	BW	WW	YW	Milk	MCE	MWWT	STAY	DOC
EPD	0.5	8.4	84.8	122.5	21.8	0.6	64.2	16.7	7.1
Acc	0.15	0.20	0.17	0.18	0.09	0.10	0.12	0.10	0.12
%RK	100	100	10	10	85	95	40	20	80

	AAPI	ATI	API	TI
Index	46.16	51.04	100.02	68.83
%RK	50	20	35	20

	CW	REA	FAT	MARB	YG
EPD	29.6	0.99	-0.114	-0.03	-0.52
Acc	0.14	0.13	0.10	0.11	0.11
%RK	15	10	50	30	35



Purchaser.....

Price \$.....

**LOT #
15**



TOPPU016 D.O.B 31/1/23

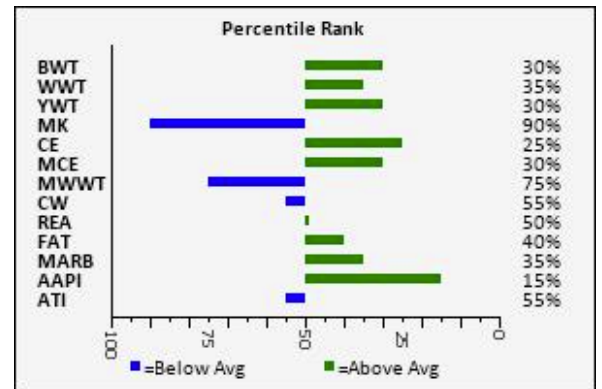
Sire: **AJYPP012** WILLANDRA PANACHE (P)
 └─ **AJYPH035** WILLANDRA HUCKLEBERRY (H)
 └─ **AJYPL130** WILLANDRA LENNY (H)
 └─ **AJYPC150** WILLANDRA DELYS C150 (H)
 └─ **ERPPJ042** BULLOCKHILLS JOKER 1342
 └─ **AJYPM001** WILLANDRA MYSTIC M1 (P)
 └─ **AJYPE013** WILLANDRA MYSTIC E13 (H)
 └─ **AJYPH035** WILLANDRA HUCKLEBERRY (H)
 └─ **AJYPM124** WILLANDRA MAVERICK (H)
 └─ **AJYPE104** WILLANDRA OLIVE E104 (H)
 Dam: **TOPPR180** TOPWEIGHT BETT R180
 └─ **AJYPE134** WILLANDRA EXCALIBUR (P)
 └─ **TOPPJ195** TOPWEIGHT BETTINA J195
 └─ **TOPPF071** TOPWEIGHT BETTINA F071

TOPPU016- U16 is very positive muscled, good footed poll sire with well above average growth figures. Great calving ease and birthweight figures which is consistent with Panache sons. His dam R180 is definitely one of the standouts within the herd.

	CE	BW	WW	YW	Milk	MCE	MWWT	STAY	DOC
EPD	7.4	4.8	75.1	108.3	20.1	5.0	57.7	17.5	13.3
Acc	0.19	0.33	0.27	0.25	0.11	0.13	0.16	0.09	0.20
%RK	25	30	35	30	90	30	75	10	10

	AAPI	ATI	API	TI
Index	62.50	32.74	112.37	68.09
%RK	15	55	10	25

	CW	REA	FAT	MARB	YG
EPD	18.5	0.78	-0.110	-0.05	-0.49
Acc	0.17	0.15	0.12	0.13	0.13
%RK	55	50	40	35	55



Purchaser.....

Price \$.....

**LOT #
16**



TOPPU058 D.O.B 19/02/23

Sire: **AJYPR133 WILLANDRA RIMFIRE (P)**
 ── **WEEPJ092 WOONALLEE JERICO (P)**
 ── **WEEPC087 WOONALLEE VASTI C87 (H)(ET)(AI)**
 ── **AJYPE021 WILLANDRA EDWIN MOSES (H)(TW)**
 ── **AJYPG119 WILLANDRA OLIVE G119 (H)**
 ── **AJYPE147 WILLANDRA OLIVE E147 (H)**
 ── **WEEPB087 WOONALLEE BUDDY (H)(ET)(AI)**
 ── **TOPPM083 TOPWEIGHT M083**
 ── **TOPPH056 TOPWEIGHT ALICE H56**

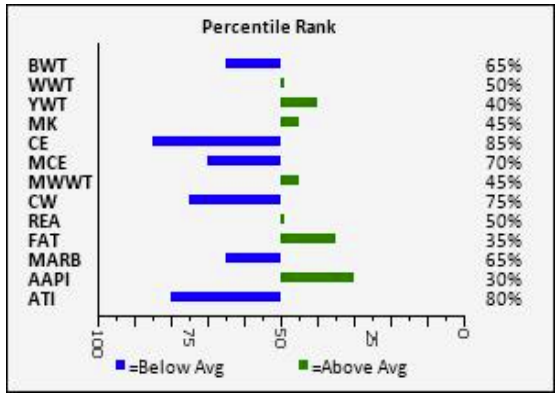
Dam: **TOPPR166 TOPWEIGHT BETT R166**
 ── **AJYPJ054 WILLANDRA JAMAICA (H)**
 ── **TOPPN080 TOPWEIGHT N080**
 ── **TOPPK092 TOPWEIGHT BETTINA K92**

TOPPU58-This poll Rimfire son has plenty of extra length with a smooth shoulder and great width over his topline following down into his rump. Great markings and soft easy doing type.

	CE	BW	WW	YW	Milk	MCE	MWWT	STAY	DOC
EPD	2.6	6.2	72.1	103.6	27.8	2.8	63.9	17.8	11.9
Acc	0.18	0.31	0.25	0.23	0.10	0.11	0.15	0.09	0.19
%RK	85	65	50	40	45	70	45	10	15

	AAPI	ATI	API	TI
Index	53.39	18.95	98.38	62.31
%RK	30	80	40	60

	CW	REA	FAT	MARB	YG
EPD	13.7	0.78	-0.109	-0.13	-0.50
Acc	0.16	0.14	0.09	0.10	0.11
%RK	75	50	35	65	45



Purchaser.....

Price \$.....

BRINGING HOME YOUR YEARLING BULL

Congratulations on purchasing your new Topweight Simmental sire!

We have some simple tips to help prevent injury or loss of condition of your bull and to ensure you and your new bull work well for each other.

Although all steps have been taken to choose docile cattle, we strongly suggest before unloading your bull from the truck that you ensure you have at least a couple of cows or steers in the yards ready for his arrival. These bulls are used to being in a mob, and typically only having one person working with them. By ensuring he is not unloaded alone will enable them to acclimatise to their new environment with minimal stress.

Your new yearling bull will cover 25 cows with ease in a single sire mob. At the conclusion of mating, it is important to look after your yearling bull as they are still growing. If paddocked with senior bulls, it may impact their ability to access adequate feed, which in turn will stunt their growth. At Topweight, we suggest paddocking them separately or alternatively running them with a mob of steers.

At Topweight we believe customer satisfaction is imperative and wish to be the first point of contact for any questions or concerns regarding your new purchase. Please call Sam - 0427 593 095

We really hope your new bull works well for you.



FREQUENTLY ASKED IGS QUESTIONS

WHAT IS IGS?

IGS (International Genetic Solutions) is the world's largest beef genetic evaluation system. A collaboration of progressive cattle breed associations, with nearly 18,000,000 total animals and more than 340,000 annual registrations, IGS provides beef producers with some of the most powerful and user friendly selection tools available, including a full suite of EPD's.

UNDERSTANDING ACCURACIES

BOLT EPD accuracies have experienced the most change, usually lowering numerically and especially for non-parent animals, however the reported accuracy will be more accurate.

Accuracy refers to the amount a reported EPD can possibly change as more data is added. EPD values with higher accuracy result in less possible change for the value over time. More accurate accuracies better represent the amount of possible change for each EPD.

WHAT IS THE DIFFERENCE BETWEEN AN EPD AND AN EBV?

An EBV (Estimated Breeding Value) is defined as an estimate of the animal's own genetic value for a particular trait.

An EPD (Expected Progeny Differences) is defined as the genetic merit of an animal's progeny.

As the parent contributes on average 50% of its genes to its progeny, an EPD is theoretically half an EBV (ie; $0.5 * EBV = EPD$). However, whilst this is theoretically true, a number of other factors means that this is not a great way to make comparisons between EPD's and EBV's.

Also, EPD's have traditionally been analysed in a single trait evaluation model, whilst EBV's have been calculated in a multi-trait evaluation model. Now, with the application of the BOLT software, IGS has moved to a multi-trait evaluation model for carcass traits.

WHAT EPD'S WILL BE REPORTED?

CED (Calving Ease Direct) – % of unassisted births in heifers.

CEM (Calving Ease Maternal) – % of unassisted births in first calving daughters.

BW (BirthWeight) – Pounds of Birthweight.

WW (Weaning Weight) – Pounds of weaning weight adjusted to 205 Days of age.

YW (Yearling Weight) – Pounds of weight adjusted to 365 Days of age.

Milk – Pounds of weaning weight due to Milk.

MWW – (Maternal Weaning Weight) Pounds of weaning weight due to milk and growth.

ST (Stayability) – % of daughters remaining in the herd at 6 years of age.

DOC (Docility) – % of progeny receiving a Docility score of 1 (ideal).

YG (Yield Grade) – USDA Yield Grade Score.

CWT (Carcass Weight) – Pounds of Carcass Weight.

REA (Rib Eye Area) – Ribeye in square Inches.

MB (Marbling) – Marbling score.

FT (Back Fat) – Rib Fat in Inches.

WHY IS STAYABILITY IMPORTANT?

Stayability is a prediction of whether a cow will stay in production until she is six years old. It is a trait that includes fertility but also several reasons for culling, such as hoof and leg soundness, and udder quality.

Longevity is an important trait for cow calf producers in Australia. The ability to ensure that replacement females have the best opportunity to be productive in your herd at 6 years of age ensures that each female has the ability to return on the investment producers make from carrying her into production.

Stayability is a measure of reproductive longevity and benefits herd productivity in two ways; through decreased need for replacements and higher average weaning weights due to a larger proportion of mature cows in the herd.

WHY ARE EPD'S REPORTED IN IMPERIAL MEASURES?

IGS uses the North American Imperial measures of pounds and inches. Whilst the Australian data will be easily converted by the software from the metric measures that breeders use, we need to continue to report the EPD's in Imperial measures in order to maintain the comparison with USA and Canadian animals. The software will report the Rank % of each EPD which will assist with understanding what each value means.

HOW DOES RANK % WORK?

The software will report the Rank% of each EPD for each animal. The Rank% is defined as the position of the EPD for each animal within the range of EPD's for all animals in the breed's percentile band. As such, the Rank% is a more useful value than the EPD itself.

UNDERSTANDING THE IGS EPD SUITE

MATERNAL EPDS

CALVING EASE DIRECT (CE-D)

Reported as the percentage of extra unassisted births in first calving heifers, relative to the average.

CE-D is relative to the direct Calving Ease of the animal. Higher values are more favourable.

CALVING EASE MATERNAL (CE-M)

Reported as the percentage of extra unassisted births in first calving heifers, relative to the average. CE-M is relative to the Calving Ease of the daughters of the animal.

Higher values are more favourable.

MILK

Reported as pounds of weaning weight of progeny from the animals daughters, relative to the average.

Predicts the difference in maternal production of daughters relative to milk production and mothering.

Values are relative to the environment of the production system. Low input environments should be very conscious of introducing too much milk due to the increased nutrient requirements that it can place on cows.

STAYABILITY (STAY)

Reported as the differences in percentage of a sire's offspring that are predicted to still be in the herd at 6 years of age... given that they calved at 2, relative to the average. Stayability is a measure of reproductive longevity.

Higher values are more favourable.

DOCILITY

Reported as the percentage of progeny, relative to the average, that will record a score of docile.

Higher values are more favourable.

GROWTH EPD'S

BIRTH WEIGHT

Reported in pounds of birth weight relative to the average.

When selecting bulls to use on heifers, breeders should also focus on the Calving Ease EPD as Birthweight is already used in the Calving Ease EPD calculation.

WEANING WEIGHT – ADJUSTED TO 205 DAYS

Reported in pounds of weaning weight of direct progeny, relative to the average.

Higher values are usually more favourable dependant on its relationship with birthweight.

YEARLING WEIGHT – ADJUSTED TO 365 DAYS

Reported in pounds of yearling weight of direct progeny, relative to the average.

Higher values are usually more favourable dependant on its relationship with birthweight.

CARCASE EPD'S – ADJUSTED TO 475 DAYS OF AGE.

CARCASE WEIGHT

Reported as pounds of Carcase Weight relative to the average.

Higher values are usually more favourable, however this is relevant to each producers target market.

RIB EYE AREA

Reported as square inches relative to the average.

Higher values are usually more favourable.

FAT

Reported as inches of back fat relative to the average.

Higher values are usually more favourable, however this requires a balance between adequate doing ability in daughters and carcase fat thresholds for target markets.

MARBLE SCORE

Reported as the differences in actual carcase marble scores relative to the average. This is different to IMF% which is used as an indicator trait in Marble Score. Higher values are more favourable.

\$INDEXES

Though EPDs allow for the comparison of genetic levels for many economically important traits, they only provide a piece of the economic puzzle. That's where \$ Indexes come in. Through well conceived, rigorous mathematical computation, \$ Indexes blend EPD's and economics to estimate an animal's overall impact on your bottom line.

AAPI

Dollars per cow exposed in a self replacing herd run under Australian production systems with excess progeny sold under an Australian payment system

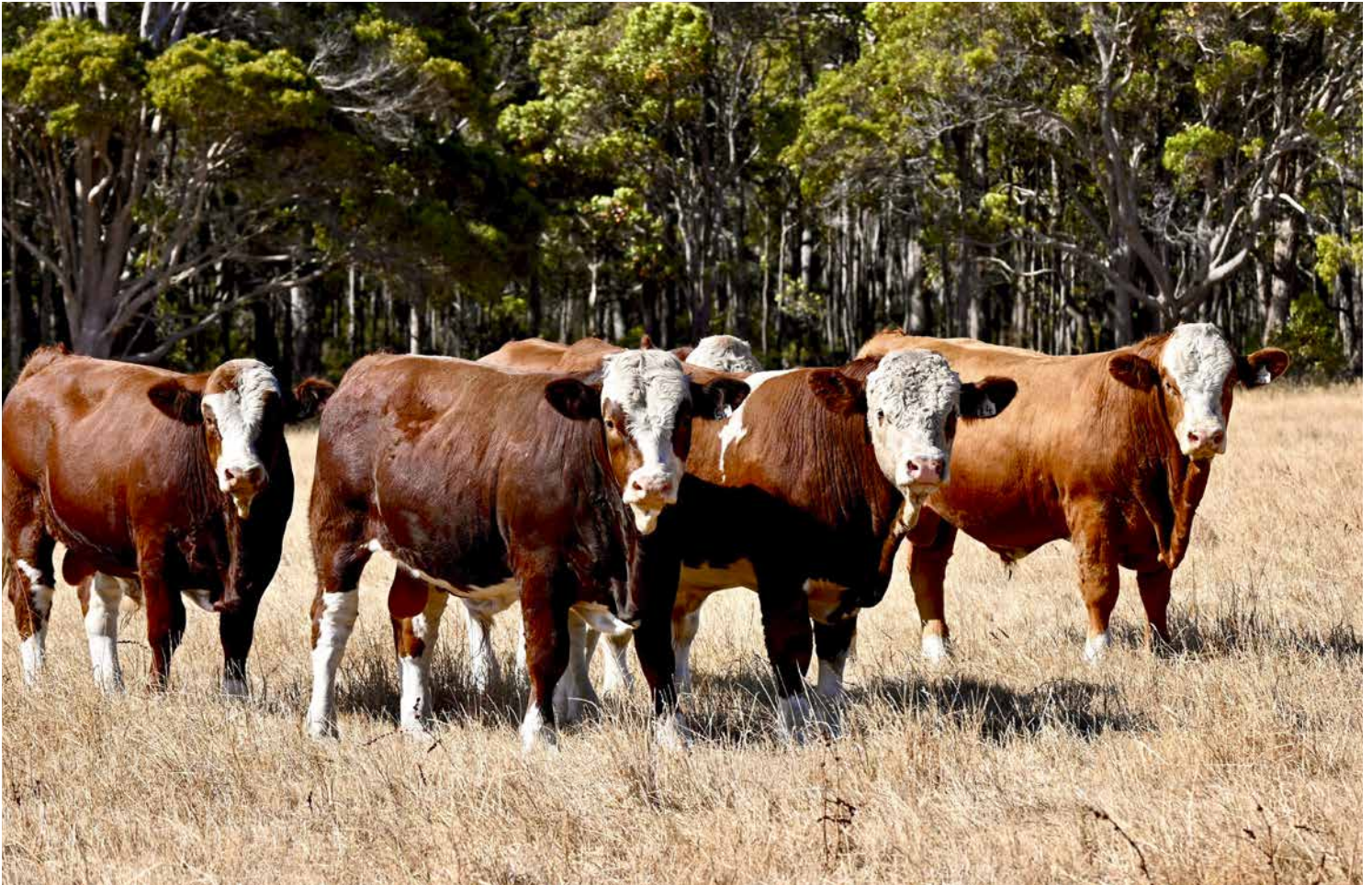
ATI

Dollars per cow exposed in a terminal sire scenario run under Australian production systems with all progeny sold under an Australian payment system

Notes:



TOPWEIGHT SIMMENTALS



SALE CATALOGUE DISCLAIMER: All steps have been taken by both the designer and vendor to ensure that information provided in this catalogue is true and correct at the time it is published. However, both the vendor, selling agents and designer make no representations about the reliability, accuracy or completeness of any information provided in this catalogue and do not assume any responsibility for the interpretation or use of the information included in this catalogue.

SAFETY DISCLAIMER: All parties, including owners, employees and representatives of Topweight accept no liability for any accidents that may occur at the Topweight sale. Any persons attending Topweight bull sale do so at their own risk.