



**ST PAULS**  
**GENETICS**

# Black Simmental Female and Genetic Sale



AuctionsPlus

**SIMULTANEOUS ONLINE AUCTION**

**MONDAY OCTOBER 28TH STARTS 5PM**

**CONCLUDES WITH TIMER MONDAY OCTOBER 28TH AT 7PM**



**61**  
**LOTS**

Comprising:

25 COWS REJOINED,  
18 with calves and  
includes 6 Donors  
10 JOINED HEIFERS  
10 EMBRYO LOTS  
10 SEMEN LOTS



Chloe Beddie 0448 521 098  
Michael Glasser 0403 526 702

Bill Cornell 0428 293 498  
e: [billcornell@bigpond.com](mailto:billcornell@bigpond.com)



Welcome to the St Pauls Genetics Black Simmental Sale being offer through an Auctions Plus Simultaneous Auction commencing Monday October 28<sup>th</sup> at 5PM and concludes with timer at 7PM. This is fourth sale since March 2023 sale, purchasers and the results have encouraged us to continue with this friendly sale format.

On September 5<sup>th</sup> St Pauls was the guest vendor at the Elite Cattle Co sale in Queensland, the sale was an outstanding success all around, St Pauls sold all ten bulls offered to average \$15,700 and a top of \$34,000. On September 16<sup>th</sup> St Pauls conducted an Auctions Plus Simultaneous Auction sale 10 of 13 bulls sold to three states to averaged \$9150 with a top of \$25,000.

The current year has been dry and a trying year for us at Henty, such that we deferred this female sale by 6 weeks; due to the season we are offering twice as many female lots than planned. Many of the females we would not have offered. To add more spice to the sale we are offering all donors born before 2023! Other decisions we made were to only keep females that are homo black, hence some superb females are now offered.

We are holding OPEN DAYS for cattle inspections starting Sunday October 20<sup>th</sup> at 1PM to 6 PM and Monday October 21<sup>st</sup> at 9AM to 1 PM. Other inspections times are available by appointment.

Simmental Australia uses the IGS performance recording systems, see charts and explanations in this catalogue. IGS is a multi-breed global data base. IGS includes any genomic data collected on animals. There are twenty partners and breed associations involved in IGS. The IGS system enables cattle producers to compare animals of different breeds or in different countries with IGS EPDS.

Have a read at the end of the catalogue on breed complementarity especially with Angus.

We have added more information into this catalogue to assist you to understand more on our program and the opportunities available with the sale offering.

Sire highlights for this sale are the offering of the first embryos by KBHR Global, the first animals carrying the service of the \$41,000 Bonnydale United and Bonnydale Ulysses. Progeny of semi exclusive sires RF Caliber, LCDR Witness, and of the high-performance sire Gibbs 9114G Essential.

Certainly, some excitement will about with the offering of donors in the Lots 1-8. Note Lot 3 sells in part.

The heifers on offer are outstanding individuals and deserve close attention.

As part of our sales there are a number of great embryo combinations to select through. There is a large variety of semen options to be had.

As we did last year, for buyers of embryos, we are able to offer a calf raising option, give Bill a call.

Go to Auctions Plus and see the sale details online including videos and updated information on the supplementary sheets.

Or contact us for the YouTube play list.

We welcome your enquires. If you have further queries with the sale offering in this catalogue, please do not hesitate in calling us or Chloe or Michael from Elders.

Thank you for your interest.

# OPEN DAY

**at Karingal 219 Henty-Ryan Road Henty NSW**

**SUNDAY OCTOBER 20<sup>TH</sup> 1-6PM and then MONDAY OCTOBER 21<sup>ST</sup> 9AM-1PM**



# RECENT HIGHLIGHTS



## **UHLAN U436**

Uhlán U436 sold Sept. 2024 to Highland Cattle Co. Qld for \$25,000.



## **SHERMAN S405**

Sold in 2022 to Kirk Cattle Co., Qld for \$24,000.



## **SURFING S470**

Sold in 2023 to Reece Mills, NSW for \$22,000.



## **UPTOWN U425**

Uptown U425 sold in Sept. 2024 to Casa Toro stud for \$34,000.



## **REVENUE R417**

Sold in 2022 to J & S Macquire, Qld for \$30,000. Used in our herd.



## **SILVERSMITH S413**

Bull calf champion Royal Sydney 2022. Simmental Feature breed. Teamed with his full brother to claim best pair of bulls. S413 is a son of Pear M412, and sold for \$22,000.



## **TRUCKS T483**

2023 Royal Adelaide Show with over 200 steers. Reserve Lightweight Champion of Hoof. Heavy Domestic Champion on Hook. Grand Champion Purebred Carcass.



## **ST PAULS RIDDLER M412 PEAR S434**

S434, daughter of M412, was the highest selling heifer at the March 2023 sale. Sold to Double K, Qld for \$11,000.



## **ST PAULS CC N426 PEAR R409**

R409, maternal sister to R412, sold to Six Creeks, SA for \$8,500. R409 has a daughter ranked No. 7 for YW for Aust. Simmental females. Daughters Lots 32, 34, 35 and 36.



## **ST PAULS CC G430 PEAR M412**

Holds the honour of Simmental Australia breeds Most Prolific Cow, for years 2022 and 2023. See Lot 3.



## **ST PAULS BEACON Q424 PEAR S358**

Sold to Nextgen Simmental WA in March 2023 sale. S358 is paternal sister to the 3 bulls that are in the top 1% of 320,000 animals tested for feed conversion efficiency.



## **ST PAULS NUK N426 PEAR R412**

R412, top selling female in Sept 2023 sale to Knights Creek, Tas. or \$11,000. Calf at side U479 ranks No. 5 for API for Aust. Simmental females. Daughter Lot 33.

## INSPECTIONS

Cattle will be yarded in pens at 'Karingal' 219 Henty- Ryan Road NSW 2658 and will be available for inspection from Sunday 20th October 1pm-6pm and Monday 21st October 9am-1pm. Inspections can be arranged at any time prior to the sale by appointment with agents or the St Paul's Genetic team.

## REGISTRATION & TRANSFERS

All bulls and females in the sale are registered with Simmental Australia. St Paul's Genetics will transfer eligible bulls and females into new purchase name through Simmental Society, purchases to please advise Simmental Australia herd prefix. The Settling Agent of the sale will conduct individual NLIS transfers to purchasers nominated PIC on registration form.

## BIDDING / BUYER NUMBER SYSTEM AUCTIONS PLUS

**THE SALE IS BEING CONDUCTED BY THE AUCTIONS PLUS ONLINE PLATFORM.**

**THE SALE WILL BE A SIMLTANEOUS AUCTION COMMENCING MONDAY OCTOBER 28<sup>TH</sup> at 5PM and concluding via the timer system from 7PM.**

The sale is online via Auctions plus. Usual protocol to register for bidding is required through this channel. It is strongly encouraged to register at least the day before the sale commencing.

## PHONE BIDDING

Please contact agents prior to sale to arrange phone bidding, which then can be performed online on the intended purchaser's request.

## CARTAGE / FREIGHT

St Paul's Genetic will co-ordinate freight assistance on deliveries. Purchasers, please confirm by requests to Bill by email [billcornell@bigpond.com](mailto:billcornell@bigpond.com) or via text to 0428 293 498.

## INSURANCE

St Paul's Genetics recommends you take out insurance to cover your new purchase. At the completion of the online sale the animals you have purchased are your responsibility.

## ANIMAL HEALTH

St Paul's Genetics has a PIC no NC322072 and is J-BAS 7.

All cattle have received the following assessments/ treatments:

- Fully vaccinated with 7 in 1 (twice yearly April and October) and drenched to control any internal/ external parasites. All cattle are free to travel to all areas of NSW, VIC, TAS, SA, QLD & WA.
- All bulls and all Heifers born in 2021, 2022 and 2023 have been ear notched tested Bovine Viral Diarrhea (BVD) negative.

## FEMALE FERTILITY AND PREGNANCY STATUS

All females are warranted as sound breeding stock. All females have been scanned and/or palpated, all females have passed as breeding stock. Confirmed pregnancies are shown in the catalogue, some comments are made to the pregnancy likely being to the AI. Check the Supplementary Sheet for further pregnancy diagnosis on October 28 on AuctionsPlus.

## DNA TESTING

Check the results of DNA testing in the information on each individual lot.

All females are homo polled, most are homo black. See notes on each lot. All females have been subject to parent verification, and all have been genomic tested.

All calves have had DNA samples taken, results will be available in November.

## GRADES

Check the grades in the information supplied on each individual lot. All females are purebred. All calves are purebred.

## GST

All lots will be offered on a GST Exclusive basis

**DISCLAIMER** Whilst all due care and attention has made to accuracy in the compilation of this catalogue, neither the vendor nor the selling agent or representative thereof assumes any responsibility whatsoever for the correctness, use or interpretation of the information on animals included in this sale catalogue.



# WITH YOU EVERY STEP OF THE WAY

## SALE CONTACTS

Chloe Beddie 0448 521 098  
Michael Glasser 0403 526 702

### Livestock

Brett Shea 0428 691 489  
Oliver Mason 0409 295 826  
Matt Tinkler 0429 387 939  
Chloe Beddie 0448 521 098  
Tim Wright 0429 679 410  
Phil Gledhill 0407 078 09

### Stud Stock

Michael Glasser 0403 526 702

### Agronomy

Sheree Hamson 0439 982 887  
Peter Hill 0417 327 444

### Farm Supplies

Matt Toll 0458 030 917  
Tim Vuarchoz 0407 190 601  
Ben Golin 0419 397 552

### Real Estate

David Gittoes 0409 362 722  
Andrew Kane 0412 620 799

### Insurance

Tom Last 0419 032 541

## Elders Albury

297 Schubach Street, Albury 2640

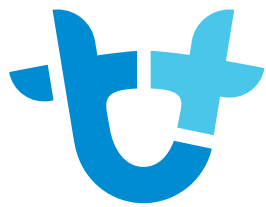
p : 02 6021 3355  
e : dg\_albury@elders.com.au

## Elders Holbrook

138 Albury St, Holbrook NSW 2644

p : 02 6052 2000  
e : dg\_holbrook@elders.com.au





# AuctionsPlus

## How to register as an AuctionsPlus user/buyer

1. To sign up, fill in your details & create a security PIN.
2. Verify your email and phone number.
3. Enter your PIC number, ABN & business details if applicable.
4. Carefully read and accept our user rules and responsibilities.
5. Complete the user quiz.
6. Submit your request to our team.

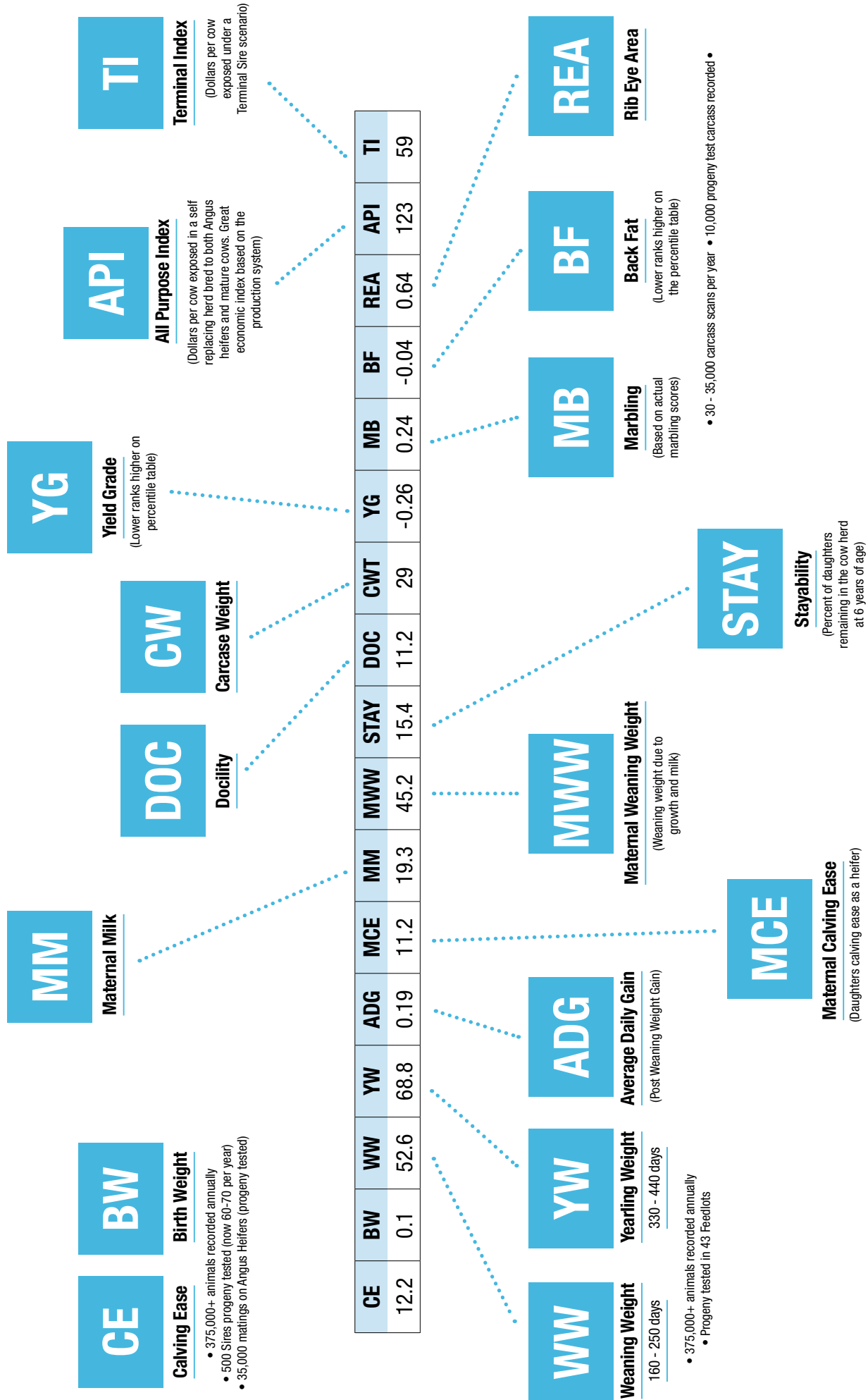


Scan to sign up now



Scan to see detailed  
step by step  
instructions

# QUICK GUIDE TO EPDs





[www.internationalgeneticsolutions.com](http://www.internationalgeneticsolutions.com)

%	CE	BW	WW	YW	MILK	MCE	MWWT	STY	DOC	CW	REA	FAT	MARB	YG	API	TI
1	18.7	-3.7	103.5	161.8	34.1	11.2	80.3	22.6	19.2	57.8	1.34	-0.12	0.76	-0.56	185.79	105.06
2	17.8	-3.1	100.1	155.9	32.7	10.6	78.4	21.6	18.2	53.5	1.27	-0.11	0.68	-0.54	179.45	102.27
3	17.2	-2.6	98.2	152.2	31.9	10.2	77	21.1	17.6	51.1	1.23	-0.11	0.64	-0.53	175.43	100.43
4	16.7	-2.3	96.8	149.7	31.3	9.9	76	20.6	17.2	49.2	1.2	-0.11	0.6	-0.52	172.89	99.07
5	16.3	-2.1	95.5	147.6	30.8	9.7	75.2	20.3	16.9	47.5	1.18	-0.1	0.57	-0.51	170.43	97.89
10	15.1	-1.3	91.4	140.4	29.1	8.8	72.4	19.3	15.6	42.4	1.1	-0.1	0.47	-0.48	161.8	93.81
15	14.3	-0.7	88.6	135.5	27.9	8.2	70.4	18.6	14.8	39.2	1.05	-0.09	0.4	-0.47	156.22	91.15
20	13.7	-0.3	86.4	131.7	26.9	7.7	68.9	18.1	14.2	36.8	1.01	-0.09	0.35	-0.45	151.51	89.08
25	13.2	0	84.5	128.4	26.1	7.4	67.4	17.6	13.6	34.8	0.98	-0.09	0.31	-0.44	147.5	87.18
30	12.8	0.3	82.8	125.4	25.4	7	66.2	17.2	13.2	33	0.96	-0.08	0.27	-0.43	143.94	85.54
35	12.4	0.6	81.3	122.8	24.8	6.7	65	16.8	12.7	31.4	0.93	-0.08	0.24	-0.42	140.68	84.09
40	12.1	0.9	80	120.2	24.2	6.4	63.9	16.4	12.3	30	0.91	-0.08	0.21	-0.41	137.59	82.7
45	11.7	1.1	78.8	118	23.6	6.1	62.8	16	11.9	28.7	0.88	-0.08	0.18	-0.4	134.81	81.36
50	11.4	1.4	77.6	115.9	23	5.8	61.7	15.5	11.6	27.3	0.86	-0.07	0.16	-0.39	132.14	80.11
55	11	1.6	76.4	113.8	22.4	5.6	60.6	15.1	11.2	26	0.84	-0.07	0.14	-0.37	129.42	78.89
60	10.7	1.8	75.2	111.6	21.8	5.3	59.5	14.6	10.8	24.7	0.82	-0.07	0.12	-0.36	126.82	77.67
65	10.3	2	74	109.4	21.2	5	58.5	14.1	10.4	23.4	0.8	-0.07	0.09	-0.35	124.15	76.39
70	9.9	2.3	72.8	107.2	20.5	4.7	57.4	13.6	9.9	22	0.77	-0.06	0.07	-0.34	121.64	75.2
75	9.5	2.5	71.4	104.9	19.8	4.4	56.3	13.1	9.4	20.7	0.75	-0.06	0.05	-0.33	118.97	74.03
80	9	2.8	70	102.3	19.1	4.1	55.2	12.5	8.8	19.2	0.72	-0.06	0.03	-0.31	116.45	72.8
85	8.4	3.1	68.3	99.5	18.3	3.7	54	11.9	8.1	17.5	0.69	-0.05	0	-0.29	113.67	71.42
90	7.6	3.6	66.3	95.8	17.2	3.2	52.5	11.1	7.1	15.4	0.65	-0.05	-0.03	-0.27	110.55	69.72
95	6.3	4.3	63.2	90.7	15.8	2.4	50.4	10.2	5.6	12.3	0.58	-0.04	-0.08	-0.23	106.32	67.44
Avg	11.4	1.4	77.6	115.9	23	5.8	61.7	15.5	11.6	27.3	0.86	-0.07	0.16	-0.39	132.14	80.11



## REFERENCE SIRE GIBBS 9114G ESSENTIAL (P)

Identification No:	IMU3Q9114
Birth Date:	5 September 2019
Grade:	Grade 3
Horn:	Homo. Polled (by DNA Test)
DNA:	Tested GGP100K, PV
Parent Verified:	Verified to Sire
Colour:	Homo. Black (by DNA Test)



CCR WIDE RANGE 9005A  
**Sire: GIBBS 7382 BROAD RANGE**  
 SSF BLK LOUISE Y534  
 HOOK'S BROADWAY 11B  
**Dam: GIBBS 7153E STAR 3136A**  
 GIBBS 3136A STAR 0589X

**Comments: Daughter Lot 34; mating sire Lot 6, 8; calf Lots 13, 21, 25; sire embryo Lots 43, 45.**

Essential is the EPD performance king; he currently sits in Australia in the top 5% for 13 traits and the other two are top 10%!! No other bull matches this. We have used Essential extensively, the calves are born easily and lighter birth weight; in the months that followed we noted the calves really kicking into weight gain mode; by yearling time the sons were standing out in our bull group. The sons are well structured and docile. Those breeders that have bought embryos or females in calf to him are commenting the same. Essential's dam is commented as a perfect uddered, highly productive cow, and resides in the Gibbs donor pen. By the looks of the heifers they should make lovely productive cows. Uhlan U436 sold to Highland Cattle Co for \$25,000 at our Sept 2024 bull sale.

### SEPTEMBER 2024 SIMMENTAL EPDS

	CE	BW	WW	YW	Milk	MCE	MWWT	STAY	DOC	CW	REA	FAT	MARB	YG	\$ INDEX VALUES			
EPD	15.4	-2.0	99.7	171.3	35.3	9.3	85.2	16.3	19.7	63.2	1.52	-0.006	0.44	-0.28	AAP	ATI	API	TI
Acc	0.73	0.90	0.87	0.85	0.40	0.56	0.56	0.45	0.79	0.67	0.62	0.52	0.65	0.50	94.04	130.19	172.88	106.70
%Rk	10	4	2	1	1	10	1	45	1	1	1	2	10	85	2	1	1	1

## REFERENCE SIRE BONNYDALE NUKARA (P) (AI) (B)

Identification No:	MBBPN073
Birth Date:	23 January 2017
Grade:	Purebred
Horn:	Homo. Polled (by DNA Test)
DNA:	Tested GGP50K, MIP, PV
Parent Verified:	Verified to Mating
Colour:	Homo. Polled (by DNA Test)



RCR AUGUSTUS R54  
**Sire: BONNYDALE AUGUSTUS L84**  
 BONNYDALE JOSSIE G204  
 TRIPLE C BETTIS S72J  
**Dam: BONNYDALE GEORGIA H279**  
 BONNYDALE GEORGIA

**Comments: Daughters Lots 8, 9, 15, 19; calves Lots 17, 24; embryo dams Lots 38, 39, 40, 41; semen Lot 51.**

We purchased Nukara as highest priced bull at Bonnydale in 2018. Nukara was an outcross for our herd and carried many high performance and famous pedigree lines. Nukara has been a superb addition into the herd. He offers calving ease, growth, high Stayability, quiet docility and muscle. His daughters have been docility, good structured, good uddered maternal dams. Nukara's legacy rolls on through our herd with his daughters and son the \$30,000 St Pauls Revenue by AI. Woonallee purchased the possession of Nukara, and he has left many fine progeny for them. Nukara has been the leading sire for Simmental registrations in 2021 and No. 2 for the registrations in 2022.

### OCTOBER 2024 SIMMENTAL EPDS

	CE	BW	WW	YW	Milk	MCE	MWWT	STAY	DOC	CW	REA	FAT	MARB	YG	\$ INDEX VALUES			
EPD	20.4	-2.2	84.3	129.5	13.2	11.9	55.4	21.2	14.5	34.9	1.16	-0.100	-0.03	-0.52	AAP	ATI	API	TI
Acc	0.68	0.77	0.71	0.71	0.46	0.46	0.54	0.42	0.60	0.54	0.48	0.43	0.55	0.41	87.16	72.29	154.83	83.83
%Rk	1	3	25	25	100	1	75	3	25	30	10	85	75	10	5	25	5	20

## REFERENCE SIRE LBRS GENESIS G69

Identification No:	IMU3Q069
Birth Date:	31 January 2019
Grade:	Purebred
Horn:	Homo. Polled (by DNA Test)
DNA:	Tested GGP10K
Parent Verified:	
Colour:	Homo. Black (by DNA Test)



CCR COWBOY CUT 5048Z

**Sire: WS PROCLAMATION E202**

WS MISS SUGAR C4

HOOK'S XAVIER 14X

**Dam: LBR DIANA D69**

LBR DOUBLE TAKE X14

**Comments: Sire of calves Lot 1; mating sire Lots 1, 5, 9; sire embryo Lot 47.**

Genesis was the high selling herd sire standout from the 2020 Bulls of the Big Sky sale offering. He offers complete, fault-free genetics for growth, maternal, carcass and \$Index values.

His pedigree is stacked with breed-leading, time-tested maternal donors: WS Miss Sugar C4, Hook's Patti 3P and LBR Night Dream M22. Look for Genesis to improve structural integrity, hoof quality and appealing phenotype in a purebred line.

### OCTOBER 2024 SIMMENTAL EPDS

	CE	BW	WW	YW	Milk	MCE	MWWT	STAY	DOC	CW	REA	FAT	MARB	YG	\$ INDEX VALUES			
EPD	9.1	2.8	112.9	171.5	24.3	4.1	80.8	15.3	17.2	69.7	0.95	-0.019	0.93	-0.10	AAP	ATI	API	TI
Acc	0.70	0.92	0.89	0.89	0.60	0.63	0.70	0.48	0.83	0.71	0.66	0.60	0.69	0.53	99.16	150.90	181.17	116.73
%Rk	65	60	1	1	30	80	1	55	5	1	30	5	1	100	1	1	1	1

## REFERENCE SIRE ST PAULS QATAR Q410 (PP) (ET) (AI) (B)

Identification No:	SPGPQ410
Birth Date:	12/05/2019
Grade:	Purebred
Horn:	Homo. Polled (by DNA Test)
DNA:	Tested GGP100K, PV
Parent Verified:	Verified to Mating
Colour:	Homo. Black (by DNA Test)



TRIPLE C SINGLETARY S3H

**Sire: CCR COWBOY CUT 5048Z**

CCR MS 4045 TIME 7322T

ELLINGSON LEGACY M229

**Dam: ST PAULS OLIE LUCY E433**

LUCAS MS 129L 594R

**Comments: Sire of calves Lots 2, 3, 4, 6, 7, 8, 9, 11, 12, 13, 16, 18; daughters Lots 13, 31.**

Qatar was the standout of his contemporary group. His sire Cowboy Cut has been one of the purebred most successful sires. His dam is the famed 'Olie' daughter E433 - she has perfect feet, medium framed, good uddered. E433 passed away winter 2023 at 14 years. Qatar adds length of body, soundness and superb looks. Qatar was sold to Crown M stud April 2024.

### OCTOBER 2024 SIMMENTAL EPDS

	CE	BW	WW	YW	Milk	MCE	MWWT	STAY	DOC	CW	REA	FAT	MARB	YG	\$ INDEX VALUES			
EPD	13.2	2.4	81.7	120.8	18.7	8.2	59.6	15.5	16.2	33.6	0.94	-0.081	0.26	-0.40	AAP	ATI	API	TI
Acc	0.49	0.50	0.52	0.51	0.27	0.34	0.35	0.43	0.45	0.46	0.48	0.44	0.50	0.40	81.07	72.68	139.29	82.93
%Rk	25	55	35	40	75	15	55	50	10	30	30	50	20	50	10	25	25	20



## REFERENCE SIRE BONNYDALE ULYSSES U220

Identification No:	MBBPU220
Birth Date:	03 February 2023
Grade:	Purebred
Horn:	Homo. Polled (by DNA Test)
DNA:	Tested GGP10K, PV
Parent Verified:	Verified to Mating
Colour:	Homo. Black (by DNA Test)



LCDR WITNESS 541C

**Sire: LCDR FAVOR 149F**

WS MISS SUGAR C4

CCR COWBOY CUT 5048Z

**Dam: ASR MS JOSIE C5168**

ASR JOSIE W965

**Comments: Depastured with Lots 1, 2, 4, 5, 6, 7, 8, 9, 10,11, 12, 13, 14, 15, 16, 17, 18, 19, 20, 21, 22, 23, 24, 25; semen Lots 48 and 49.**

In April 2023 when visiting Bonnydale we noted 4 bull calves. Three were sired by LCDR Favor. Favor had interest to us being out of the famed Sugar cow and sired by the big EPD growth Witness. In February 2024 we viewed over 100 young bulls at Bonnydale, U220 was our phenotypic selection for his overall phenotype, structure and balance. We purchased him as Lot 3 at the March Sale, since that time 3 other Black Simmental herds have invested in his genetics, along with Bonnydale retaining semen. Ulysses U220 will add growth, muscle and marbling. Ulysses has been a gentleman, so docile in the yard and paddock.

### OCTOBER 2024 SIMMENTAL EPDS

	CE	BW	WW	YW	Milk	MCE	MWWT	STAY	DOC	CW	REA	FAT	MARB	YG	\$ INDEX VALUES			
EPD	8.2	2.5	90.3	142.4	21.8	4.0	67.0	16.0	15.7	39.0	0.81	-0.093	0.47	-0.37	AAP	ATI	API	TI
Acc	0.45	0.49	0.50	0.50	0.24	0.29	0.33	0.37	0.47	0.45	0.42	0.39	0.42	0.36	70.01	74.88	150.05	93.20
%Rk	75	55	10	10	50	80	20	45	15	20	55	75	4	65	35	25	10	3

## REFERENCE SIRE BONNYDALE UNITED U149

Identification No:	MBBPU149
Birth Date:	25 January 2023
Grade:	Purebred
Horn:	Homo. Polled (by DNA Test)
DNA:	Tested GGP100K, PV
Parent Verified:	Verified to Mating
Colour:	Homo. Black (by DNA Test)



CLRS DIVIDEND 405D

**Sire: BONNYDALE REVENUE**

ASR LITTLE DESSI D6273

BONNYDALE NASHVILLE N70

**Dam: BONNYDALE GOLDIE Q194**

BONNYDALE GOLDIE K140

**Comments: AI to Lot 4, and AI and then depastured with Lots 26, 27, 29, 30, 31, 32, 33, 34, 35, 36, 37.**

United U149 was the other bull that caught our eye in February 2024 whilst at Bonnydale. His length, temperament and structure the standouts.

United's balance of EPD's, difference in pedigree, and ability to use with all females especially heifers made him a bull we needed in the herd. A syndicate was formed with Webb Pastoral, Six Creeks and ourselves. United was purchased at \$41,000 the highest price at Bonnydale and for a bull in 2024. No semen has been offered. United has been used as a feature sire in this sale.

### OCTOBER 2024 SIMMENTAL EPDS

	CE	BW	WW	YW	Milk	MCE	MWWT	STAY	DOC	CW	REA	FAT	MARB	YG	\$ INDEX VALUES			
EPD	15.0	1.3	81.7	125.3	25.1	6.2	66.0	13.7	16.2	37.5	1.11	-0.090	0.18	-0.46	AAP	ATI	API	TI
Acc	0.43	0.48	0.45	0.45	0.15	0.21	0.25	0.32	0.42	0.40	0.38	0.34	0.38	0.32	76.81	80.28	137.12	83.80
%Rk	10	35	35	30	20	45	20	70	10	20	10	65	35	25	20	20	25	20





# LANCASTER PRINCESS K281



Identification No:	LCSPK281
Birth Date:	23 June 2014
Horn:	Homo. Polled (by DNA Test)
DNA:	Tested GGP100K, SV
Parent Verified:	Verified to Sire
Colour:	Homo. Black (by DNA Test)

SRS J914 PREFERRED BEEF  
**Sire: SRS RIGHT-ON 22R**  
SRS G720 GILLIAN  
GW LUCKY ONE 686K  
**Dam: LANCASTER PRINCESS B396**  
GW MISS MATERNAL 611F

**Comments:** Bull Calf V438 by Genesis born 4/6/24.  
AI'd on 29/7/24 to Genesis. Depastured with Ulysses from 1/8/24.  
1/10/24 P.T.I.C. to AI.  
Daughter T429 sells Lot 18. Daughter T460 sells Lot 24.  
We selected K281, along with M432 (Lot 5) as our two pick females  
from the last Lancaster Female Sale held in 2020.  
K281 is by Right-On, a bull I admired when I inspected him in the  
USA. Right-On had body, fleshing and muscle, his daughters are good  
working females. Right-On tended to remove white. K281 maternal  
grand sire Lucky One is still in the top for marbling after nearly 20  
years.  
K281 pedigree appeal along with her outstanding looks, she is still a  
classy cow as shown in the photo above. She breeds well.  
We flushed K281 four times for 52 frozen embryos, to average 13  
embryos per flush.  
We have retained 3 daughters and now granddaughter in the herd  
and embryos in the tank, we offer her as a feature lot.



ENFORCER AT 2022 ELITE SALE.



CALF V438



TAUMALOLA T415

## SEPTEMBER 2024 SIMMENTAL EPDS

	CE	BW	WW	YW	Milk	MCE	MWWT	STAY	DOC	CW	REA	FAT	MARB	YG	\$ INDEX VALUES			
EPD	4.5	6.0	77.2	123.5	25.0	1.6	63.6	14.6	13.4	12.2	0.63	-0.098	0.21	-0.43	AAP	ATI	API	TI
Acc	0.47	0.51	0.47	0.46	0.28	0.32	0.34	0.42	0.44	0.45	0.45	0.41	0.45	0.37	35.62	6.81	117.21	74.48
%Rk	95	100	50	35	25	95	30	65	35	95	85	80	30	35	95	100	70	60



## ST PAULS TANKER'S LUCY K435



Identification No:	SPGPK435
Birth Date:	29 August 2014
Horn:	Homo. Polled (by DNA Test)
DNA:	Tested GGP50K, PV
Parent Verified:	Verified to Parentage
Colour:	Homo. Black (by DNA Test)

MR NLC SUPERIOR S6018  
**Sire: TNT TANKER U263**  
TNT MISS S17  
CNS DREAM ON L186  
**Dam: ST PAULS DREAM LUCY E431**  
LUCAS MS 129L 594R

**Comments:** Female Calf Tag V475 by Qatar Q410 born 21/8/24.  
Depastured with Ulysses from 6/9/24.  
Daughter U435 sells Lot 31.  
Lucy K435 has been flushed three times for a total of 26 Frozen Embryos, average 8.6 per flush.  
Lucy K435 has always been admired for her striking good looks, big capacity, strong top and elegant style.  
We have 2 retained daughters in the herd being R404 and Q405.  
R404 has 2 retained daughters.  
Q405 produced S409, that is a young donor in our herd.  
K435 at 10 years of age is offered as an opportunity for someone. Note, she is no longer an option to embryo transfer due to adhesions.



LUCY R406



SMASH S441



LUCY S446

### SEPTEMBER 2024 SIMMENTAL EPDS

	CE	BW	WW	YW	Milk	MCE	MWWT	STAY	DOC	CW	REA	FAT	MARB	YG	\$ INDEX VALUES			
EPD	10.7	2.6	85.4	130.6	16.8	8.5	59.5	16.9	11.2	35.3	1.06	-0.066	-0.24	-0.40	AAP1	ATI	API	TI
Acc	0.46	0.48	0.49	0.49	0.31	0.32	0.37	0.39	0.45	0.47	0.44	0.42	0.47	0.38	63.98	67.82	113.63	72.26
%Rk	50	55	20	20	85	15	55	35	70	30	15	30	100	50	50	35	75	70





## ST PAULS CC G430 PEAR M412



### AUSTRALIA'S MOST PROLIFIC COW FOR 2022

Identification No:	SPGPM412
Birth Date:	25 September 2016
Horn:	Homo. Polled (by DNA Test)
DNA:	Tested GGP100K, SV
Parent Verified:	Verified to Sire
Colour:	Homo. Black (by DNA Test)

TRIPLE C SINGLETARY S3H  
**Sire: CCR COWBOY CUT 5048Z**  
CCR MS 4045 TIME 7322T  
CIRCLE T ANTOINETTES STAR  
**Dam: ST PAULS STAR BLAZE PEAR G430**  
ST PAULS PEAR D270

#### WHAT IS OFFERED FOR SALE

Pear M412 is being offered as full possession and ownership with delivery expected in April 2025.

There is a period with 3 shared flushes to be done at St Pauls before she heads to the purchaser.

The embryos collected will be shared 50 - 50 in these 3 flushes. If there is an odd number of embryos from the total of the flushes that embryo is the purchasers.

Sires used by mutual agreement with shared costs on the semen.

St Pauls will invoice the purchaser a flat production cost of only \$125 per frozen embryo that the purchaser receives.

Pear M412 has been flushed 9 times for an averaged 15 embryo per flush.

St Pauls will guarantee a minimum of 20 embryos to the purchaser!

First flush is booked for November 21st. Following flushes will be 6 to 9 weeks apart. Three shared flushes in total.

Then Pear M412 can head to the purchaser with full possession and ownership.

Pear M412 can be rebred before she departs St Pauls if the purchaser wishes.

What an opportunity to own outright the Simmental breeds most prolific cow, and guaranteed a minimum of 20 embryos.

St Pauls retains bull calf V432.

**Comments:** M412 Bull Calf at side V432 by Qatar Q410 born 23/5/24 remains with St. Pauls.

M412 is an amazing embryo producer, flushed 9 times for an average of 15 Frozen embryos per flush.

M412 story starts with an amazing pedigree, sires Cowboy Cut, maternal sires Star, Dream On, Dakota and all back to gdam D270. D270 still breeding here at 16 years of age. Longevity plus!

M412, first calf Paramount was the star bull of the P drop and first to sell. She followed up with a Nukara heifer Q443, again a favourite and sold in the Autumn 2023 sale.

With such a great start of quality calves M412 entered our embryo program. She has flushed unbelievably well to average 15 frozen embryos per flush!

Cont. next page

#### OCTOBER 2024 SIMMENTAL EPDS

	CE	BW	WW	YW	Milk	MCE	MWWT	STAY	DOC	CW	REA	FAT	MARB	YG	\$ INDEX VALUES			
EPD	7.0	3.0	85.8	127.8	25.7	3.8	68.6	15.3	12.4	27.7	0.64	-0.074	0.10	-0.31	AAP1	ATI	API	TI
Acc	0.48	0.50	0.53	0.52	0.32	0.35	0.39	0.42	0.46	0.50	0.48	0.43	0.51	0.40	56.20	49.88	122.39	80.01
%Rk	85	65	20	25	20	80	15	55	50	55	80	40	50	80	70	60	60	30



### Comments cont:

M412 is a tremendous cow to see, she has the length, the width, the depth that breeders aspire for. Her progeny have dominated the sale and show ring. At Simmental 50 Year Celebration Sydney Royal 2022 Silversmith S413, won Bull Calf Champion and with his full brother Secret Squirrel S412 combined to win the pair of bulls under 20 months. A third brother Frank placed 3rd in his steer class and won a bronze medal on the hook.

M412 progeny have been standouts in the sale ring. As invited guests to the Elite 2022 sale, her 3 sons sold to average \$20,000 with Silversmith at \$22k, Serbia S415 at \$20k and Secret Squirrel at \$18k.

Two more yearling sons Story Teller S439 and Ships S436 sold as a pair to commercial breeder for \$25,000.

In our 2023 March Sale M412 progeny dominated. Daughter Pear S434 topped the sale at \$11,000 to Double K, with another 7 daughters selling well. Her son Storytime S440 topped the bulls at \$10,500!

In our 2023 September Sale daughter Pear T443 topped the open yearling heifers selling at \$8,500 to Litt Simmental.

Embryos from M412 sold at \$950 each.

In our September 2024 bull sale sons of M412 again captured the spotlight with Uhlan U436 selling at \$25,000 to Huron Park Simmentals and another Uber U438 at \$9,000 to Hobbs Livestock.

M412 has sold over \$200,000 of seedstock to date. The popularity of M412 has been awe inspiring. We have 7 daughters currently in the herd, and embryo implants and many embryos stored in the tank.

Again as we say our passion is to promote, market and increase the Black Simmental landscape.

I said we would never sell M412, but Elders challenged me by saying what a greater opportunity for the breed is there than offering M412!!



**Silversmith S413**



**Secret Squirrel S412**



**Serbia S415**



**Pear S434**



**Pear T443**



**Uhlan U436**



**Uber U438**



**Bull Calf Champion Silversmith**



**Calf V432**



## ST PAULS CC D270 PEAR M415



Identification No:	SPGPM415
Birth Date:	05 October 2016
Horn:	Homo. Polled (by DNA Test)
DNA:	Tested GGP50K, PV
Parent Verified:	Verified to Parentage
Colour:	Homo. Black (by DNA Test)

TRIPLE C SINGLETARY S3H  
**Sire: CCR COWBOY CUT 5048Z**  
CCR MS 4045 TIME 7322T  
ES DAKOTA NK68  
**Dam: ST PAULS PEAR D270**  
MISS PRICKLY PEAR 615F

**Comments:** Female  
Calf V423 by Qatar  
Q410 born 18/5/24.  
AI'd on 29/7/24 to  
Bonnydale United.  
Depastured with  
Ulysses U220 from  
1/8/24.  
Pear M415 has been  
a grand breeding cow  
for us, bull calves have  
been well reviewed and  
sold well, in the Autumn  
2023 sale 4 of her  
daughters sold to seedstock operations.  
M415 has plenty of milk and always rears a great calf, as present calf  
V423 shows. We also offer a daughter T410 as Lot 15.  
We have retained 2 daughters and grand daughter to continue M415  
legacy. M415 is a 3/4 sister to Pear M412 (Lot 3).  
M415 has been flushed three times fo 28 frozen embryos, an average  
of 9.3 embryos a flush.



**CALF V423**



**UNCONDITIONAL U421**



**PEAR S421**



**SHIPS S430**

### SEPTEMBER 2024 SIMMENTAL EPDS

	CE	BW	WW	YW	Milk	MCE	MWWT	STAY	DOC	CW	REA	FAT	MARB	YG	\$ INDEX VALUES			
EPD	4.1	5.7	85.1	126.9	24.0	2.8	66.6	18.6	11.4	33.9	0.77	-0.072	0.14	-0.33	AAP1	ATI	API	TI
Acc	0.46	0.47	0.48	0.49	0.32	0.34	0.37	0.43	0.44	0.47	0.45	0.42	0.48	0.38	66.60	64.65	122.51	76.72
%Rk	100	95	25	30	30	90	20	20	70	35	60	35	40	75	45	40	60	45





## LANCASTER STRIKE M432

Identification No:	LCSPM432
Birth Date:	10 August 2016
Horn:	Homo. Polled (by DNA Test)
DNA:	Tested GGP100K, SV
Parent Verified:	Verified to Sire
Colour:	Homo. Black (by DNA Test)



LANCASTER FIXIT F307  
**Sire: LANCASTER HIGH PROFILE H338**  
LANCASTER ERICA A329  
GW COMFORT ZONE 651Y  
**Dam: LANCASTER STRIKE J183**  
LANCASTER C370



**STRIKE T447 BY RIDDLER**



**UNIFIED U410 BY PROCLAMATION**



**TALISMAN T409 BY PROCLAMATION**



**TOBY T431 BY TANKER**

**Comments:** AI'd on 29/7/24 to Genesis. Depastured with Ulysses from 1/8/24.

1/10/124 P.T.I.C. to AI. Daughter T433 sells Lot 19.

Strike M432, we purchased her as one of our 2 picks (the other was K281 see Lot 1) at the last Lancaster Female Sale in 2000. She features on this year's front cover! M432 pedigree features Lancaster family lines Erica and Strike. M432 offered CE, Milk, Docility along with outstanding phenotype. She is long as a train, has a tremendous top line, bundles of depth and moves so well.

M432 sells as a feature for this sale. Whilst we are sad to offer her, her legacy continues on with 6 daughters and now grand daughters in the herd, plus 14 implanted recipients and a few embryos in the tank.

M432 has flushed extremely well. 87 Frozen Embryos from 8 flushes to average 10.9 embryos per flush. We have sold embryos last year to average a \$1,000 per embryo.

Her sons and even grand sons have done well, with T464 going to Elite Cattle Co. Her daughter T447 was an eye catcher selling in last year's sale. As we say our passion is to promote and increase the numbers of Black Simmental. M432 will certainly do this for her new owner. Best wishes.

### SEPTEMBER 2024 SIMMENTAL EPDS

	CE	BW	WW	YW	Milk	MCE	MWWT	STAY	DOC	CW	REA	FAT	MARB	YG	\$ INDEX VALUES			
EPD	15.1	0.7	68.1	103.6	38.8	7.5	72.9	15.3	15.7	28.5	1.00	-0.114	-0.04	-0.53	AAP1	ATI	API	TI
Acc	0.47	0.50	0.45	0.46	0.26	0.29	0.32	0.37	0.41	0.44	0.40	0.36	0.42	0.34	78.11	62.70	123.76	72.27
%Rk	10	25	80	80	1	25	4	55	15	55	20	95	80	10	15	40	55	70





## ST PAULS TANKER D270 PEAR P438



Identification No:	SPGPP438
Birth Date:	30 November 2018
Horn:	Homo. Polled (by DNA Test)
DNA:	Tested GGP100K, PV
Parent Verified:	Verified to Parentage
Colour:	Homo. Black (by DNA Test)

MR NLC SUPERIOR S6018

**Sire: TNT TANKER U263**

TNT MISS S17

ES DAKOTA NK68

**Dam: ST PAULS PEAR D270**

MISS PRICKLY PEAR 615F

**Comments:** P438, has been an outstanding breeder for us. A pedigree that is so solid, Tanker as sire and D270 as dam. D270 is still at St Pauls at 16 years of age. Daughter S401 sells as Lot 11, we retained full sister S402. Another daughter T419 sells as Lot 17.

We offer P438 and are relying on her Nukara daughter S419 to carry on the line. We have embryos featuring as Lots 38-40.

We have flushed P438 once, two embryos resulted in two daughters, S401 and S402.

P438 sells as a feature cow, she looks great, has great calves, has EPDs \$Indexes and growth.

What a 3 in 1 unit to purchase!

Female Calf V425 by Qatar Q410 born 18/5/24.

AI'd on 29/7/24 to Essential. Depastured with Ulysses from 1/8/24. 1/10/24 P.T.I.C., more likely Ulysses.



PEAR S419



PEAR S401 (LOT 11)

### SEPTEMBER 2024 SIMMENTAL EPDS

	CE	BW	WW	YW	Milk	MCE	MWWT	STAY	DOC	CW	REA	FAT	MARB	YG	\$ INDEX VALUES			
EPD	3.3	6.3	90.6	143.9	25.6	4.7	70.9	21.7	13.5	51.6	1.28	-0.095	-0.28	-0.47	AAP1	ATI	API	TI
Acc	0.45	0.47	0.46	0.45	0.32	0.31	0.37	0.40	0.43	0.45	0.44	0.41	0.45	0.37	88.28	104.78	108.44	70.18
%Rk	100	100	10	5	20	70	10	2	35	3	2	75	100	20	4	4	85	80



## ST PAULS CC M418 PEAR Q404

Identification No:	SPGPQ404
Birth Date:	24 January 2019
Horn:	Homo. Polled (by DNA Test)
DNA:	Tested GGP100K, PV
Parent Verified:	Verified to Parentage
Colour:	Homo. Black (by DNA Test)

TRIPLE C SINGLETARY S3H

**Sire: CCR COWBOY CUT 5048Z**

CCR MS 4045 TIME 7322T

DIKEMANS SURE BET

**Dam: ST PAULS SB D270 PEAR M418**

ST PAULS PEAR D270



PEAR S422 BY RIDDLER



SUDAN S417 BY NUKARA



PEAR S424 BY RIDDLER



UNSHAKABLE U419 BY NUKARA

**Comments:** Twins Bull Calf V444 and V445 by Qatar Q410 born 23/6/24.

Depastured with Ulysses from 6/9/24.

Q404 is quite the cow and plenty to tell about her. Her dam M418 is retained in the herd, with herd daughters S418 by Nukara, a full sister to the \$30,000 Revenue and a beautiful Tanker female, V409. Q404 gdam D270 is still in the herd at 16yo.

Q404 has quite the pedigree sired by Cowboy Cut and sharing gdam D270 makes her a 3/4 sibling to M412 (Lot 3).

Q404 has bred outstandingly well, see photos of her two Nukara sons S417 (\$20,000) and U419 (\$13,000).

Q404 two ET daughters Pear S422 and S424 showed in Melbourne 2022 Simmental 50 Year Celebration Show and were placed 1st and 2nd in class, and then combined for pair of females, and sire progeny winning groups.

We have flushed Q404 once for 7 quality embryos. Q404 is doing a super job with her twin bulls. A young donor, with pedigree heritage.

### SEPTEMBER 2024 SIMMENTAL EPDS

	CE	BW	WW	YW	Milk	MCE	MWWT	STAY	DOC	CW	REA	FAT	MARB	YG	\$ INDEX VALUES			
EPD	6.6	3.2	84.2	119.2	17.2	4.2	59.3	18.1	13.5	30.7	0.89	-0.067	0.17	-0.36	AAP1	ATI	API	TI
Acc	0.45	0.46	0.46	0.46	0.31	0.32	0.36	0.40	0.44	0.45	0.45	0.42	0.46	0.38	75.19	62.91	129.65	79.55
%Rk	85	70	25	45	85	75	55	25	35	45	40	30	35	65	20	40	40	35





## ST PAULS NUK N401 PEAR Q424



Identification No:	SPGPQ424
Birth Date:	22 August 2019
Horn:	Homo. Polled (by DNA Test)
DNA:	Tested GGP100K, PV
Parent Verified:	Verified to Parentage
Colour:	Homo. Black (by DNA Test)

BONNYDALE AUGUSTUS L84  
**Sire: BONNYDALE NUKARA**  
BONNYDALE GEORGIA H279  
HOOK'S YELLOWSTONE 97Y  
**Dam: ST PAULS YELLOW L423 PEAR N401**  
ST PAULS CATALYST D270 PEAR L423

**Comments:** AI'd on 29/7/24 to Essential. Depastured with Ulysses from 1/8/24.

1/10/24 P.T.I.C. to AI.

Pear Q424 has an amazing pedigree with Nukara, Yellowstone, Catalyst and back to the foundation cow. D270 still in our herd at 16 years of age.

Q424 was the standout phenotype heifer in the spring Q heifers. She had an awesome Beacon heifer S358 at 23 months of age. S358, pictured, was purchased by Nexgen WA. Nexgen also purchased 3 flushes of embryos from Q424. The first of these progeny of Nexgen were outstanding in looks and performance.

Nexgen tested their bull crop on Growsafe Feeders.

Two of Q424 finished with average daily gains in the top 1% of over 320,000 animals of all breeds tested worldwide. Congratulations to Nexgen. It is exciting to see the efficiency that Q424 is part of. Her AI mating is a full sibling to these two bulls.

Q424 has been flushed 6 times for 58 embryos, an average of 9.67 frozen embryos per flush.

Q424 bred so well to Witness, see photos here of Usher U453. We have retained sisters to him.

Pear Q424 is a gem. Looks, pedigree, performance proven and in calf to Essential.



USHER U453



PEAR S358

### SEPTEMBER 2024 SIMMENTAL EPDS

	CE	BW	WW	YW	Milk	MCE	MWWT	STAY	DOC	CW	REA	FAT	MARB	YG	\$ INDEX VALUES			
EPD	14.8	0.5	86.4	138.6	28.8	8.1	72.0	15.9	13.0	30.7	0.98	-0.080	0.18	-0.43	AAP1	ATI	API	TI
Acc	0.46	0.46	0.48	0.49	0.24	0.29	0.32	0.37	0.42	0.43	0.41	0.37	0.43	0.35	56.00	53.01	145.43	88.13
%Rk	15	25	20	10	10	20	5	50	45	45	25	50	35	40	70	60	15	10





## ST PAULS NUK M2047 MISS LUCKY R403

Identification No:	SPGPR403
Birth Date:	17 March 2020
Horn:	Homo. Polled (by DNA Test)
DNA:	Tested GGP100K, PV
Parent Verified:	Verified to Parentage
Colour:	Homo. Black (by DNA Test)

BONNYDALE AUGUSTUS L84  
**Sire: BONNYDALE NUKARA**  
 BONNYDALE GEORGIA H279  
 XSIMM SINGLETARY J2024A  
**Dam: ST PAULS XSIM M LUCKY ONE M2047**  
 XSIM MISS L ONE J2057A



**Comments:** Female Calf V427 by Qatar Q410 born 20/5/24.

AI'd on 29/7/24 to Genesis. Depastured with Ulysses from 1/8/24. 1/10/24 P.T.I.C. to AI.

Maternal sister T453 sells Lot 23. We have retained daughter T305. Maternal sister to R403 is Q408, dam of the \$34,000 Uptown U425. Check out calf V427.

### SEPTEMBER 2024 SIMMENTAL EPDS

	CE	BW	WW	YW	Milk	MCE	MWWT	STAY	DOC	CW	REA	FAT	MARB	YG	\$ INDEX VALUES			
EPD	15.3	1.3	83.4	132.5	19.6	8.7	61.3	17.3	13.6	35.1	1.07	-0.096	0.15	-0.48	AAP	ATI	API	TI
Acc	0.41	0.43	0.43	0.42	0.23	0.24	0.30	0.35	0.39	0.39	0.38	0.34	0.40	0.32	69.42	67.60	144.56	83.92
%Rk	10	35	30	20	65	15	45	30	35	30	15	80	40	20	35	35	15	20



## ST PAULS TRJ N412 LUCY R428

Identification No:	SPGPR428
Birth Date:	06 August 2020
Horn:	Homo. Polled (by DNA Test)
DNA:	Tested GGP100K, PV
Parent Verified:	Verified to Parentage
Colour:	Homo. Black (by DNA Test)

CCR COWBOY CUT 5048Z  
**Sire: TJ ROOSEVELT 366E**  
 TJ 99A  
 HOOK'S YELLOWSTONE 97Y  
**Dam: ST PAULS YELLOW LUCY N412**  
 ST PAULS OLIE LUCY E433



**Comments:** Bull Calf V473 by Woonallee Toronto (WEET274) born 5/8/24. Toronto is the current record selling price Black Simmental in Australia. V473 is one of the first calves.

Depastured with Ulysses from 6/9/24. R428 is from our favourite Yellowstone cow N412. R428 twin sister sold in autumn 2023 sale. R428 is one nice breeding cow, look at her outstanding daughter that sells Lot 37.

### SEPTEMBER 2024 SIMMENTAL EPDS

	CE	BW	WW	YW	Milk	MCE	MWWT	STAY	DOC	CW	REA	FAT	MARB	YG	\$ INDEX VALUES			
EPD	8.8	4.4	92.2	144.2	21.3	5.8	67.4	16.5	17.8	38.3	1.09	-0.101	0.15	-0.49	AAP	ATI	API	TI
Acc	0.45	0.48	0.52	0.50	0.26	0.30	0.35	0.40	0.44	0.44	0.43	0.40	0.44	0.36	78.03	75.74	132.66	84.85
%Rk	70	85	10	5	50	55	15	40	3	20	10	85	40	15	15	25	35	15



## ST PAULS PROC P438 PEAR S401

Identification No:	SPGPS401
Birth Date:	15 March 2021
Horn:	Homo. Polled (by DNA Test)
DNA:	Tested GGP100K, PV
Parent Verified:	Verified to Parentage
Colour:	Homo. Black (by DNA Test)

CCR COWBOY CUT 5048Z

**Sire: WS PROCLAMATION E202**

WS MISS SUGAR C4

TNT TANKER U263

**Dam: ST PAULS TANKER D270 PEAR P438**

ST PAULS PEAR D270

**Comments:** Female Calf V446 by Qatar Q410 born 25/6/24.

Depastured with Ulysses from 6/9/24.

S401 was shown at 2022 Sydney Royal Simmental Feature. We have retained her full sister S402. Dam sells as Lot 6. Maternal sister sells as Lot 17. Embryos from another maternal sister sells Lot 38, 39, 40. This is a fabulous family, goes back to D270 still breeding in herd at 16yo.



Calf V446

### SEPTEMBER 2024 SIMMENTAL EPDS

	CE	BW	WW	YW	Milk	MCE	MWWT	STAY	DOC	CW	REA	FAT	MARB	YG	\$ INDEX VALUES			
EPD	9.3	3.1	96.5	145.2	26.2	6.6	74.5	20.6	16.3	42.3	0.73	-0.066	0.17	-0.26	AAP	ATI	API	TI
Acc	0.44	0.46	0.46	0.46	0.27	0.29	0.33	0.39	0.44	0.43	0.44	0.38	0.43	0.36	90.14	86.90	143.98	88.51
%Rk	65	65	3	5	15	40	3	5	10	15	70	30	35	85	3	15	15	10



## ST PAULS PROC Q406 MISS LUCKY S404

Identification No:	SPGPS404
Birth Date:	22 March 2021
Horn:	Homo. Polled (by DNA Test)
DNA:	Tested GGP100K, PV
Parent Verified:	Verified to Parentage
Colour:	Homo. Black (by DNA Test)

CCR COWBOY CUT 5048Z

**Sire: WS PROCLAMATION E202**

WS MISS SUGAR C4

BONNYDALE NUKARA

**Dam: ST PAULS NUK M2006 MISS LUCKY Q406**

ST PAULS XSIM M LKY STRIKE M2006



**Comments:** Female Calf V440 by Qatar Q410 born 7/6/24.

AI'd on 29/7/24 to United. Depastured with Ulysses from 1/8/24. Still to preg test.

S404 is a beautiful young breeder, has capacity, calf is a ripper. Check out the pedigree - Proclamation out of a Nukara cow Q406 (still in the herd), and EPD balance.

### SEPTEMBER 2024 SIMMENTAL EPDS

	CE	BW	WW	YW	Milk	MCE	MWWT	STAY	DOC	CW	REA	FAT	MARB	YG	\$ INDEX VALUES			
EPD	15.6	0.9	87.2	127.6	22.6	8.5	66.2	19.9	14.7	27.7	0.80	-0.097	0.28	-0.42	AAP	ATI	API	TI
Acc	0.45	0.45	0.46	0.46	0.23	0.30	0.31	0.38	0.43	0.42	0.42	0.39	0.43	0.35	78.78	55.11	157.39	89.44
%Rk	10	30	20	25	40	15	20	10	20	55	55	80	20	40	15	55	4	10





## ST PAULS TJR E433 LUCY S411

Identification No:	SPGPS411
Birth Date:	19 April 2021
Horn:	Homo. Polled (by DNA Test)
DNA:	Tested GGP100K, PV
Parent Verified:	Verified to Parentage
Colour:	Homo. Black (by DNA Test)

CCR COWBOY CUT 5048Z

**Sire: TJ ROOSEVELT 366E**

TJ 99A

ELLINGSON LEGACY M229

**Dam: ST PAULS OLIE LUCY E433**

LUCAS MS 129L 594R



**Comments:** Female Calf V443 by Qatar Q410 born 22/6/24. Depastured with Ulysses from 6/9/24.

Maternal sister T442 sells Lot 21, maternal sister S429 sells Lot 14.

S411 dam E433 had been a foundation female - passed at 14yo. E433 is dam of Qatar Q410, see reference sires. We retain 4 daughters of E433 plus grand daughters. E433 is maternal sister to E431 that features the start of the Lucy's that are shown.

### SEPTEMBER 2024 SIMMENTAL EPDS

	CE	BW	WW	YW	Milk	MCE	MWWT	STAY	DOC	CW	REA	FAT	MARB	YG	\$ INDEX VALUES			
EPD	9.8	3.4	89.6	147.2	18.4	6.3	63.2	14.3	18.7	36.6	0.99	-0.073	0.14	-0.39	AAP	ATI	API	TI
Acc	0.45	0.48	0.49	0.48	0.26	0.30	0.34	0.39	0.45	0.44	0.44	0.40	0.46	0.37	68.60	68.24	130.12	83.93
%Rk	60	70	15	4	75	45	35	65	2	25	20	40	40	55	40	35	40	20



## ST PAULS PROC E433 LUCY S429

Identification No:	SPGPS429
Birth Date:	09 July 2021
Horn:	Homo. Polled (by DNA Test)
DNA:	Tested GGP100K, PV
Parent Verified:	Verified to Parentage
Colour:	Homo. Black (by DNA Test)

CCR COWBOY CUT 5048Z

**Sire: WS PROCLAMATION E202**

WS MISS SUGAR C4

ELLINGSON LEGACY M229

**Dam: ST PAULS OLIE LUCY E433**

LUCAS MS 129L 594R



**Comments:** Female Calf V476 by Trojan T468 born 13/8/24.

Depastured with Ulysses from 6/9/24.

Maternal sister T442 sells Lot 21, maternal sister sells Lot 13.

Refer to family notes in Lot 13.

### SEPTEMBER 2024 SIMMENTAL EPDS

	CE	BW	WW	YW	Milk	MCE	MWWT	STAY	DOC	CW	REA	FAT	MARB	YG	\$ INDEX VALUES			
EPD	14.2	0.4	76.7	119.7	21.1	7.8	59.5	17.3	16.8	31.8	0.65	-0.067	0.47	-0.28	AAP	ATI	API	TI
Acc	0.46	0.48	0.48	0.48	0.28	0.32	0.35	0.41	0.45	0.45	0.46	0.42	0.47	0.38	81.46	65.99	158.23	87.93
%Rk	15	25	55	45	55	20	55	30	10	40	80	30	5	85	10	35	4	10





## ST PAULS NUK M415 PEAR T410

Identification No:	SPGPT410
Birth Date:	23 April 2022
Horn:	Homo. Polled (by DNA Test)
DNA:	Tested GGP100K, PV
Parent Verified:	Verified to Parentage
Colour:	Homo. Black (by DNA Test)

BONNYDALE AUGUSTUS L84  
**Sire: BONNYDALE NUKARA**  
 BONNYDALE GEORGIA H279  
 CCR COWBOY CUT 5048Z  
**Dam: ST PAULS CC D270 PEAR M415**  
 ST PAULS PEAR D270



**Comments:** Female Calf V411 by Essential born 12/4/24.  
 Depastured with Ulysses from 12/7/24. 1/10/24 Preg test in calf (PTIC).  
 Dam M415 sells Lot 4.  
 T410 has that balance of EPD's, along with a cool pedigree. Dam is 3/4 sister to M412.



Calf V411

### SEPTEMBER 2024 SIMMENTAL EPDS

	CE	BW	WW	YW	Milk	MCE	MWWT	STAY	DOC	CW	REA	FAT	MARB	YG	\$ INDEX VALUES			
EPD	13.2	1.6	89.9	133.8	18.5	7.6	63.5	20.5	15.1	27.2	0.93	-0.074	-0.03	-0.41	AAP	ATI	API	TI
Acc	0.42	0.45	0.46	0.46	0.21	0.26	0.29	0.35	0.41	0.40	0.39	0.36	0.40	0.33	76.04	51.02	138.15	81.58
%Rk	25	40	15	15	75	25	35	5	20	60	30	40	75	45	20	60	25	25



## ST PAULS PROC R401 LUCY T414

Identification No:	SPGPT414
Birth Date:	27 April 2022
Horn:	Homo. Polled (by DNA Test)
DNA:	Tested GGP100K, PV
Parent Verified:	Verified to Parentage
Colour:	Homo. Black (by DNA Test)

CCR COWBOY CUT 5048Z  
**Sire: WS PROCLAMATION E202**  
 WS MISS SUGAR C4  
 BONNYDALE NUKARA  
**Dam: ST PAULS NUK E433 LUCY R401**  
 ST PAULS OLIE LUCY E433



**Comments:** Bull Calf V442 by Qatar Q410 born 21/6/24.  
 Depastured with Ulysses from 6/9/24.  
 Here is a lovely female, length, great udder, nice calf and awesome EPD's. Pedigree features superior sires and famed dams Sugar and the E433 Lucy.

### SEPTEMBER 2024 SIMMENTAL EPDS

	CE	BW	WW	YW	Milk	MCE	MWWT	STAY	DOC	CW	REA	FAT	MARB	YG	\$ INDEX VALUES			
EPD	16.1	-0.2	82.1	124.9	20.9	9.1	62.0	20.3	18.6	36.2	0.60	-0.069	0.40	-0.25	AAP	ATI	API	TI
Acc	0.45	0.47	0.48	0.47	0.25	0.29	0.33	0.39	0.44	0.43	0.42	0.39	0.42	0.35	98.56	79.06	165.07	89.86
%Rk	10	15	30	30	55	10	40	10	2	25	85	35	10	90	1	20	2	10



## ST PAULS QATAR P438 PEAR T419

Identification No:	SPGPT419
Birth Date:	12 May 2022
Horn:	Homo. Polled (by DNA Test)
DNA:	Tested GGP100K, PV
Parent Verified:	Verified to Parentage
Colour:	Homo. Black (by DNA Test)



CCR COWBOY CUT 5048Z  
**Sire: ST PAULS QATAR Q410**  
 ST PAULS OLIE LUCY E433  
 TNT TANKER U263  
**Dam: ST PAULS TANKER D270 PEAR P438**  
 ST PAULS PEAR D270

**Comments:** Bull Calf V420 by Nukara born 30/4/24.  
 Depastured with Ulysses from 12/7/24.  
 Dam P438 sells Lot 6, maternal sister S401 sells Lot 11. 3/4 sister S419 has embryo Lots 38, 39, 40.  
 T419, a young cow from a tried and true family.

### SEPTEMBER 2024 SIMMENTAL EPDS

	CE	BW	WW	YW	Milk	MCE	MWWT	STAY	DOC	CW	REA	FAT	MARB	YG	\$ INDEX VALUES			
EPD	9.0	3.9	85.7	132.5	22.1	7.0	65.0	18.0	14.9	50.2	1.05	-0.078	0.06	-0.37	AAP	ATI	API	TI
Acc	0.40	0.42	0.44	0.43	0.18	0.24	0.27	0.35	0.19	0.40	0.38	0.36	0.39	0.33	91.72	108.50	128.02	78.61
%Rk	65	80	20	20	45	35	25	25	20	3	15	45	55	60	3	3	45	35



## ST PAULS TJR PRINCESS T429

Identification No:	SPGPT429
Birth Date:	03 July 2022
Horn:	Homo. Polled (by DNA Test)
DNA:	Tested GGP100K, PV
Parent Verified:	Verified to Parentage
Colour:	Homo. Black (by DNA Test)



CCR COWBOY CUT 5048Z  
**Sire: TJ ROOSEVELT 366E**  
 TJ 99A  
 SRS RIGHT-ON 22R  
**Dam: LANCASTER PRINCESS K281**  
 LANCASTER PRINCESS B396

**Comments:** Bull Calf Tag V474 by Qatar Q410, born 19/8/24.  
 Depastured with Ulysses from 6/9/24.  
 Dam is Lot 1. Full sister T460 sells Lot 24.  
 Worth a good look, T429 has power and growth.

### SEPTEMBER 2024 SIMMENTAL EPDS

	CE	BW	WW	YW	Milk	MCE	MWWT	STAY	DOC	CW	REA	FAT	MARB	YG	\$ INDEX VALUES			
EPD	5.1	5.9	90.2	143.8	23.2	3.5	68.3	18.0	17.3	18.6	0.67	-0.090	0.32	-0.40	AAP	ATI	API	TI
Acc	0.43	0.46	0.52	0.50	0.23	0.27	0.33	0.37	0.42	0.42	0.40	0.38	0.40	0.34	55.15	21.58	136.19	85.06
%Rk	95	95	10	5	35	85	15	25	4	85	80	65	15	50	75	95	30	15





## ST PAULS STRIKE T433

Identification No:	SPGPT433
Birth Date:	05 July 2022
Horn:	Homo. Polled (by DNA Test)
DNA:	Tested GGP100K, PV
Parent Verified:	Verified to Parentage
Colour:	Homo. Black (by DNA Test)



BONNYDALE AUGUSTUS L84  
**Sire: BONNYDALE NUKARA**  
 BONNYDALE GEORGIA H279  
 LANCASTER HIGH PROFILE H338  
**Dam: LANCASTER STRIKE M432**  
 LANCASTER STRIKE J183

**Comments:** Depastured with Ulysses from 28/5/24. 1/10/24 Preg tested in calf.  
 Dam M432 sells Lot 5.  
 T433 full brother T436 sold at \$16,000 at Agrow 2024. We have a full sister T434 retained as well as 3 maternal sisters in our herd.

### SEPTEMBER 2024 SIMMENTAL EPDS

	CE	BW	WW	YW	Milk	MCE	MWWT	STAY	DOC	CW	REA	FAT	MARB	YG	\$ INDEX VALUES			
EPD	19.0	-0.9	73.1	113.1	25.9	10.4	62.5	17.6	16.3	30.2	1.01	-0.095	0.03	-0.48	AAP	ATI	API	TI
Acc	0.42	0.46	0.50	0.44	0.29	0.24	0.36	0.34	0.40	0.40	0.37	0.34	0.37	0.32	83.99	65.12	142.52	78.10
%Rk	1	10	65	60	20	2	40	30	10	45	20	75	65	20	10	40	20	40



## ST PAULS RID M412 PEAR T439

Identification No:	SPGPT439
Birth Date:	07 July 2022
Horn:	Homo. Polled (by DNA Test)
DNA:	Tested GGP100K, PV
Parent Verified:	Verified to Parentage
Colour:	Homo. Black (by DNA Test)



LFE GOTHAM 819Y  
**Sire: LFE THE RIDDLER 323B**  
 LFE BS CHARO 23Y  
 CCR COWBOY CUT 5048Z  
**Dam: ST PAULS CC G430 PEAR M412**  
 ST PAULS STAR BLAZE PEAR G430

**Comments:** Bull Calf V469 by Trojan T468 (SPGPT468) born 15/7/24. Depastured with Ulysses from 6/9/24.  
 Refer to dam M412 as Lot 3.  
 T439 is a full sister to 4 bulls - Secret Squirrel (\$18k), Silversmith (\$22k), Story Time and Story Time, at \$10,500 and \$12,500.  
 Silversmith was bull calf champion Sydney Feature 2022 and then combined with Secret Squirel for best pair of bulls under 20 months. Full sisters Pear S434 topped the Autumn 2023 at \$11,000 to Double K and Pear T443 in Sept 2023, as a high seller for \$8,500 to Litt Simmentals.

### SEPTEMBER 2024 SIMMENTAL EPDS

	CE	BW	WW	YW	Milk	MCE	MWWT	STAY	DOC	CW	REA	FAT	MARB	YG	\$ INDEX VALUES			
EPD	7.0	4.1	98.9	155.4	22.5	4.9	72.0	14.2	12.5	43.3	0.94	-0.071	0.00	-0.34	AAP	ATI	API	TI
Acc	0.44	0.46	0.49	0.51	0.25	0.29	0.33	0.39	0.43	0.43	0.42	0.37	0.43	0.35	56.79	80.34	120.03	84.64
%Rk	85	80	2	2	40	70	5	70	50	10	30	35	70	70	70	20	65	15





## ST PAULS WIT E433 LUCY T442

Identification No:	SPGPT442
Birth Date:	08 July 2022
Horn:	Homo. Polled (by DNA Test)
DNA:	Tested GGP100K, PV
Parent Verified:	Verified to Parentage
Colour:	Homo. Black (by DNA Test)



OLF OTIS Y43  
**Sire: LCDR WITNESS 541C**  
 WS MOTHER LODE W21  
 ELLINGSON LEGACY M229  
**Dam: ST PAULS OLIE LUCY E433**  
 LUCAS MS 129L 594R

**Comments:** Female Calf V471 by Essential born 27/7/24. Depastured with Ulysses from 6/9/24.  
 Maternal sister S411 sells Lot 13, refer notes. Maternal sister S429 sells Lot 14.  
 T442 - a stylish female, with a good Essential heifer from the great maternal line of Lucy E433.  
 Full brother Trial T490 sold to Hobbs this year.

### SEPTEMBER 2024 SIMMENTAL EPDS

	CE	BW	WW	YW	Milk	MCE	MWWT	STAY	DOC	CW	REA	FAT	MARB	YG	\$ INDEX VALUES			
EPD	7.0	4.5	95.0	149.1	11.9	3.0	59.4	11.3	9.4	59.6	1.11	-0.118	-0.14	-0.45	AAP	ATI	API	TI
Acc	0.45	0.48	0.50	0.51	0.26	0.30	0.34	0.38	0.44	0.43	0.42	0.38	0.42	0.35	60.72	122.20	104.50	77.61
%Rk	85	85	4	3	100	90	55	90	90	1	10	100	95	30	60	1	90	40



## ST PAULS TJR R412 PEAR T448

Identification No:	SPGPT448
Birth Date:	10 July 2022
Horn:	Homo. Polled (by DNA Test)
DNA:	Tested GGP100K, PV
Parent Verified:	Verified to Parentage
Colour:	Hetero. Black (by DNA Test)



CCR COWBOY CUT 5048Z  
**Sire: TJ ROOSEVELT 366E**  
 TJ 99A  
 BONNYDALE NUKARA  
**Dam: ST PAULS NUK N426 PEAR R412**  
 ST PAULS BMX2 F422 PEAR N426

**Comments:** Depastured with Ulysses from 28/5/24.  
 Pear T448 is an awesome female. She has a very quiet temperament, she is long bodied, stylish female.  
 Her dam was the high seller at the Spring Sale 2023 for \$11,000 to Knight's Creek.

### SEPTEMBER 2024 SIMMENTAL EPDS

	CE	BW	WW	YW	Milk	MCE	MWWT	STAY	DOC	CW	REA	FAT	MARB	YG	\$ INDEX VALUES			
EPD	10.9	4.0	104.4	160.1	21.8	7.3	74.0	17.0	15.3	34.9	1.29	-0.109	0.31	-0.58	AAP	ATI	API	TI
Acc	0.43	0.47	0.48	0.47	0.24	0.28	0.32	0.39	0.43	0.43	0.41	0.38	0.41	0.35	63.52	61.17	150.13	97.15
%Rk	45	80	1	1	50	30	3	35	15	30	2	95	15	2	50	45	10	1



## ST PAULS MISS LUCKY T453

Identification No:	SPGPT453
Birth Date:	14 July 2022
Horn:	Homo. Polled (by DNA Test)
DNA:	Tested GGP100K, PV
Parent Verified:	Verified to Parentage
Colour:	Homo. Black (by DNA Test)



CCR COWBOY CUT 5048Z  
**Sire: ST PAULS QATAR Q410**  
 ST PAULS OLIE LUCY E433  
 XSIMM SINGLETARY J2024A  
**Dam: ST PAULS XSIM M LUCKY ONE M2047**  
 XSIM MISS L ONE J2057A

**Comments:** Sadly had stillborn bull calf 15/7/24.  
 Depastured with Ulysses from 6/9/24.  
 Maternal sister R403 sells as Lot 9.  
 T453 is a maternal sister to Q408, dam of the \$34,000 Uptown U425 sold to Casa Toro at the 2024 Elite Sale.

### SEPTEMBER 2024 SIMMENTAL EPDS

	CE	BW	WW	YW	Milk	MCE	MWWT	STAY	DOC	CW	REA	FAT	MARB	YG	\$ INDEX VALUES			
EPD	12.4	3.0	85.2	127.8	23.7	7.6	66.3	14.4	15.8	36.9	0.93	-0.092	0.15	-0.42	AAP	ATI	API	TI
Acc	0.39	0.51	0.45	0.42	0.27	0.23	0.33	0.35	0.18	0.39	0.38	0.35	0.38	0.32	75.74	77.35	131.09	82.25
%Rk	30	65	25	25	30	25	20	65	15	25	30	70	40	45	20	20	40	25



## ST PAULS TJR PRINCESS T460

Identification No:	SPGPT460
Birth Date:	18 July 2022
Horn:	Homo. Polled (by DNA Test)
DNA:	Tested GGP100K, PV
Parent Verified:	Verified to Parentage
Colour:	Homo. Black (by DNA Test)



CCR COWBOY CUT 5048Z  
**Sire: TJ ROOSEVELT 366E**  
 TJ 99A  
 SRS RIGHT-ON 22R  
**Dam: LANCASTER PRINCESS K281**  
 LANCASTER PRINCESS B396

**Comments:** Bull Calf V436 by Nukara born 1/6/24.  
 Depastured with Ulysses from 12/7/24.  
 Dam K281 sells Lot 1. Full sister T429 sells Lot 18.  
 Classy pedigree, longer bodied female out of the K281 donor cow.

### SEPTEMBER 2024 SIMMENTAL EPDS

	CE	BW	WW	YW	Milk	MCE	MWWT	STAY	DOC	CW	REA	FAT	MARB	YG	\$ INDEX VALUES			
EPD	5.9	3.1	74.8	116.1	23.2	4.0	60.6	18.5	14.5	9.4	0.63	-0.061	0.22	-0.35	AAP	ATI	API	TI
Acc	0.43	0.46	0.50	0.52	0.23	0.27	0.32	0.36	0.42	0.42	0.40	0.37	0.41	0.34	50.26	4.05	130.70	76.36
%Rk	90	65	60	50	35	80	50	20	25	100	85	25	25	65	80	100	40	50



## ST PAULS RID L423 PEAR T466

Identification No:	SPGPT466
Birth Date:	28 July 2022
Horn:	Homo. Polled (by DNA Test)
DNA:	Tested GGP100K, PV
Parent Verified:	Verified to Parentage
Colour:	Homo. Black (by DNA Test)

LFE GOTHAM 819Y  
**Sire: LFE THE RIDDLER 323B**  
LFE BS CHARO 23Y  
MR ISHEE CATALYST  
**Dam: ST PAULS CATALYST D270 PEAR L423**  
ST PAULS PEAR D270



**Comments:** Bull Calf V472 by Essential born 28/7/24.  
Depastured with Ulysses from 6/9/24.  
Certainly a sweet 2 year old with a good Essential calf. Dam L423 sold in September 2023 to Tugulawa.  
T466, like dam L423 has growth and milk to go.



Calf V472

### SEPTEMBER 2024 SIMMENTAL EPDS

	CE	BW	WW	YW	Milk	MCE	MWWT	STAY	DOC	CW	REA	FAT	MARB	YG	\$ INDEX VALUES			
EPD	6.8	3.5	98.4	160.6	28.5	5.3	77.7	10.4	13.0	39.6	1.12	-0.089	0.17	-0.46	AAP	ATI	API	TI
Acc	0.43	0.46	0.46	0.46	0.25	0.28	0.32	0.39	0.43	0.43	0.41	0.37	0.39	0.34	40.04	66.81	124.03	90.73
%Rk	85	75	2	1	10	60	1	95	45	15	10	65	35	25	95	35	55	5

## STORY OUTLINE FOR HEIFERS LOTS 26-37

Our passion is to multiply superior genetics and share with the industry. We enjoy the collaboration with parts of the industry, especially in education, marketing and distributing genetics.

In time these decisions and passion will assist in the advancement and growth of the fabulous breed, Black Simmentals.

There is so much upside to Black Simmentals, (take a read of our commercial thoughts at the end of this catalogue).

This group of heifers Lot 26 to 37 is straight from the heart of the St Pauls U heifers.

Look at the pedigrees, the phenotype, the EPD's, we doubt anyone will find a better combination group.

Dam lines include the original Pear D258, dam of the decorated Royal Show Grand Champion cow Red Pear G427. Dam R409 high seller in last year's sale and dam R412 top priced female September 2023 sale. Miss Lucky gdam of the \$34,000 Uptown bull. Dam S418 being full sister to the \$30,000 Revenue R417. Lucy line with dam full sister to gdam of VC's Interbreed Sydney 2024 Champion Lucy T054.

Then add the mating sire Bonnydale United U149, the \$41,000 high seller purchased this year by Webb Pastoral and ourselves. No semen has been offered. So here is the opportunity to have some of the first calves of United. (See reference sire page).





## ST PAULS SL MISS LUCKY U412

Identification No:	SPGPU412
Birth Date:	19 April 2023
Horn:	Homo. Polled (by DNA Test)
DNA:	Tested GGP100K, PV
Parent Verified:	Verified to Parentage
Colour:	Homo. Black (by DNA Test)



W/C LOADED UP 1119Y  
**Sire: GB LIVESTOCK SPRING LOADED**  
SPRINGCREEK B GOLD 102Y  
WS PROCLAMATION E202  
**Dam: ST PAULS PROC Q408 MISS LUCKY S403**  
ST PAULS NUK M2047 MISS LUCKY Q408

**Comments:** AI'd to United on 28/7/24, Depastured with United from 8/8/24. P.T.I.C. 25/9/24.  
Gdam Q408, dam of the \$34,000 Uptown S425 sold to Casa Toro. Q408 also dam of T412, superstar of her year, and young donor at St Pauls.  
U412 carries Red Charlie gene.

### SEPTEMBER 2024 SIMMENTAL EPDS

	CE	BW	WW	YW	Milk	MCE	MWWT	STAY	DOC	CW	REA	FAT	MARB	YG	\$ INDEX VALUES			
EPD	12.9	2.1	85.2	117.1	21.9	7.2	64.5	23.9	15.3	29.5	0.98	-0.110	0.07	-0.51	AAP	ATI	API	TI
Acc	0.39	0.40	0.39	0.39	0.14	0.21	0.22	0.31	0.18	0.37	0.35	0.32	0.34	0.30	97.68	65.01	146.04	80.83
%Rk	25	50	25	50	45	30	30	1	15	50	25	95	55	10	1	40	15	30



## ST PAULS SL PEAR U417

Identification No:	SPGPU417
Birth Date:	27 April 2023
Horn:	Homo. Polled (by DNA Test)
DNA:	Tested GGP100K, PV
Parent Verified:	Verified to Parentage
Colour:	Hetero. Black (by DNA Test)



W/C LOADED UP 1119Y  
**Sire: GB LIVESTOCK SPRING LOADED**  
SPRINGCREEK B GOLD 102Y  
ES DAKOTA NK68  
**Dam: ST PAULS PEAR D258**  
MISS PRICKLY PEAR 615F

**Comments:** AI'd to United on 28/7/24, Depastured with United from 8/8/24. P.T.I.C. 25/9/24.  
U417 is a maternal sister to Red Pear G427. G427 was Interbreed Champion Female Canberra Royal 2014 and Grand Champion Simmental Female Sydney 2014. U417's dam D258 had been a superb donor, D258 has daughters in 8 Simmental studs.  
D258 passed recently at 16yo. We have just 2 daughters retained, so probably the last chance to get a direct daughter of D258.

### SEPTEMBER 2024 SIMMENTAL EPDS

	CE	BW	WW	YW	Milk	MCE	MWWT	STAY	DOC	CW	REA	FAT	MARB	YG	\$ INDEX VALUES			
EPD	7.7	5.7	90.7	142.9	21.1	4.5	66.5	20.6	11.8	39.0	1.09	-0.086	-0.30	-0.44	AAP	ATI	API	TI
Acc	0.38	0.41	0.40	0.40	0.17	0.21	0.25	0.32	0.19	0.37	0.36	0.32	0.35	0.30	68.03	71.47	111.08	70.51
%Rk	80	95	10	10	55	75	20	5	60	20	10	60	100	30	40	30	80	75

# LOTS 28 & 29 WITHDRAWN



## ST PAULS SL PEAR U434

Identification No:	SPGPU434
Birth Date:	18 June 2023
Horn:	Homo. Polled (by DNA Test)
DNA:	Tested GGP100K, PV
Parent Verified:	Verified to Parentage
Colour:	Homo. Black (by DNA Test)



W/C LOADED UP 1119Y  
**Sire: GB LIVESTOCK SPRING LOADED**  
 SPRINGCREEK B GOLD 102Y  
 BONNYDALE NUKARA  
**Dam: ST PAULS NUK M418 PEAR S418**  
 ST PAULS SB D270 PEAR M418

**Comments:** Al'd to United on 28/9/24, Depastured with United from 28/9/24.  
 U434 dam is a full sister to the \$30,000 bull Revenue R417 that we sold to McQuires in 2022. Enough said!  
 U434 carries Red Charlie gene.

### SEPTEMBER 2024 SIMMENTAL EPDS

	CE	BW	WW	YW	Milk	MCE	MWWT	STAY	DOC	CW	REA	FAT	MARB	YG	\$ INDEX VALUES			
EPD	11.0	2.2	81.2	123.7	18.6	5.9	59.2	18.5	13.5	28.7	0.95	-0.121	-0.21	-0.53	AAPI	ATI	API	TI
Acc	0.37	0.39	0.39	0.39	0.13	0.19	0.22	0.31	0.18	0.36	0.34	0.30	0.34	0.29	68.31	53.87	118.34	71.70
%Rk	45	50	35	35	75	50	55	20	35	50	30	100	100	10	40	55	65	70



## ST PAULS QATAR LUCY U435

Identification No:	SPGPU435
Birth Date:	04 July 2023
Horn:	Homo. Polled (by DNA Test)
DNA:	Tested GGP100K, PV
Parent Verified:	Verified to Parentage
Colour:	Homo. Black (by DNA Test)



CCR COWBOY CUT 5048Z  
**Sire: ST PAULS QATAR Q410**  
 ST PAULS OLIE LUCY E433  
 TNT TANKER U263  
**Dam: ST PAULS TANKER'S LUCY K435**  
 ST PAULS DREAM LUCY E431

**Comments:** Al'd to United on 28/9/24, Depastured with United from 28/9/24.  
 U435 is a superb looking individual, taking all the good looks that her sire and dam could offer.  
 It all starts with the gdam E431, was the star of her year, E431 was in our show team and then purchased by Lucrana. E431 had two Tanker daughters K435 and Circle Eight Miss Lucky K299. K299 was purchased by VC. K299 is the gdam of VC Lucy T054 Supreme Interbreed Heifer Sydney Show 2024. U435 is certainly a star in the making.

### SEPTEMBER 2024 SIMMENTAL EPDS

	CE	BW	WW	YW	Milk	MCE	MWWT	STAY	DOC	CW	REA	FAT	MARB	YG	\$ INDEX VALUES			
EPD	14.8	2.3	81.6	122.6	17.7	10.1	58.5	15.0	13.7	32.9	0.98	-0.066	0.03	-0.38	AAPI	ATI	API	TI
Acc	0.40	0.43	0.44	0.44	0.20	0.25	0.28	0.36	0.19	0.40	0.39	0.36	0.40	0.33	69.72	67.14	128.23	77.43
%Rk	15	50	35	35	80	3	60	60	35	35	25	30	65	55	35	35	45	45





## ST PAULS CAL R409 PEAR U440

Identification No:	SPGPU440
Birth Date:	02 July 2023
Horn:	Homo. Polled (by DNA Test)
DNA:	Tested GGP100K, PV
Parent Verified:	Verified to Parentage
Colour:	Hetero. Black (by DNA Test)

NGDB STRUCTURE 34D

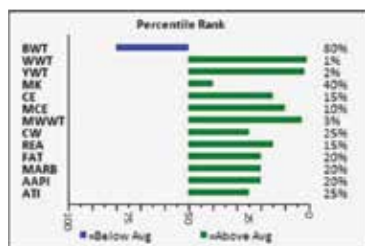
**Sire: RF CALIBER 014G**

RF NOT JUST A FLIRT 404B

CCR COWBOY CUT 5048Z

**Dam: ST PAULS CC N426 PEAR R409**

ST PAULS BMX2 F422 PEAR N426



**Comments:** AI'd to United on 28/9/24, Depastured with United from 28/9/24. Full sister Lot 35, 36 and maternal sister Lot 34.

Wow, pedigree, phenotype, EPD's - she like her sisters has it all. Dam R409, high seller to Six Creeks Simmental September 2023.

Sired by the sought after Caliber.

### SEPTEMBER 2024 SIMMENTAL EPDS

	CE	BW	WW	YW	Milk	MCE	MWWT	STAY	DOC	CW	REA	FAT	MARB	YG	\$ INDEX VALUES			
EPD	14.1	3.9	103.7	153.4	22.6	9.0	74.5	17.3	16.3	37.2	1.03	-0.053	0.30	-0.35	AAPI	ATI	API	TI
Acc	0.42	0.47	0.47	0.47	0.16	0.25	0.26	0.34	0.41	0.42	0.39	0.34	0.37	0.33	76.99	73.14	152.23	95.76
%Rk	15	80	1	2	40	10	3	30	10	25	15	20	20	70	20	25	10	2



## ST PAULS CAL R412 PEAR U446

Identification No:	SPGPU446
Birth Date:	04 July 2023
Horn:	Homo. Polled (by DNA Test)
DNA:	Tested GGP100K, PV
Parent Verified:	Verified to Parentage
Colour:	Hetero. Black (by DNA Test)

NGDB STRUCTURE 34D

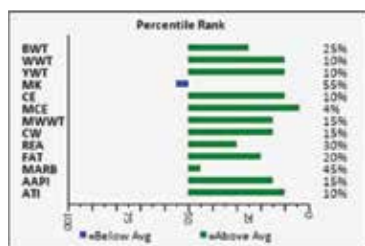
**Sire: RF CALIBER 014G**

RF NOT JUST A FLIRT 404B

BONNYDALE NUKARA

**Dam: ST PAULS NUK N426 PEAR R412**

ST PAULS BMX2 F422 PEAR N426



**Comments:** AI'd to United on 28/9/24, Depastured with United from 28/9/24. 3/4 sibling to Lot 32, 35, 36.

Again big Wow, pedigree with dam R412, top seller in September 2023 sale, selling to Knights Creek, Tasmania. Gdam at Elite. The EPD blend is extraordinary. Body type and shape is awesome.

### SEPTEMBER 2024 SIMMENTAL EPDS

	CE	BW	WW	YW	Milk	MCE	MWWT	STAY	DOC	CW	REA	FAT	MARB	YG	\$ INDEX VALUES			
EPD	16.2	0.6	92.8	137.9	21.1	9.9	67.5	14.5	15.6	41.4	0.94	-0.051	0.12	-0.30	AAPI	ATI	API	TI
Acc	0.41	0.46	0.47	0.46	0.14	0.23	0.25	0.34	0.40	0.41	0.36	0.33	0.36	0.31	79.74	88.32	140.55	88.44
%Rk	10	25	10	10	55	4	15	65	15	15	30	20	45	80	15	10	20	10



## ST PAULS ESS R409 PEAR U447

Identification No:	SPGPU447
Birth Date:	05 July 2023
Horn:	Homo. Polled (by DNA Test)
DNA:	Tested GGP100K, PV
Parent Verified:	Verified to Parentage
Colour:	Hetero. Black (by DNA Test)

GIBBS 7382 BROAD RANGE

**Sire: GIBBS 9114G ESSENTIAL**

GIBBS 7153E STAR 3136A

CCR COWBOY CUT 5048Z

**Dam: ST PAULS CC N426 PEAR R409**

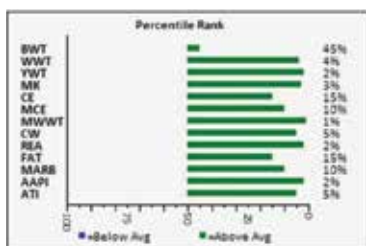
ST PAULS BMX2 F422 PEAR N426



**Comments:** AI'd to United on 28/9/24, Depastured with United from 28/9/24. Maternal sisters Lot 32, 35, 36.

U447 has it all. Then look at her EPD graph, certainly mindblowing.

Sire Essential is doing a superb job for us. He sired the \$25,000 St Pauls Uhlan U436, sold to Highland Cattle Co, Qld. and out of the Pear line!



### SEPTEMBER 2024 SIMMENTAL EPDS

	CE	BW	WW	YW	Milk	MCE	MWWT	STAY	DOC	CW	REA	FAT	MARB	YG	\$ INDEX VALUES			
EPD	14.4	1.8	95.8	150.7	30.4	8.8	78.3	18.2	18.1	47.5	1.29	-0.045	0.43	-0.37	AAPI	ATI	API	TI
Acc	0.45	0.48	0.49	0.48	0.21	0.29	0.30	0.36	0.45	0.44	0.43	0.39	0.43	0.36	92.43	99.31	163.91	98.25
%Rk	15	45	4	2	3	10	1	20	3	5	2	15	10	60	2	5	2	1



## ST PAULS CAL R409 PEAR U467

Identification No:	SPGPU467
Birth Date:	09 July 2023
Horn:	Homo. Polled (by DNA Test)
DNA:	Tested GGP100K, PV
Parent Verified:	Verified to Parentage
Colour:	Hetero. Black (by DNA Test)

NGDB STRUCTURE 34D

**Sire: RF CALIBER 014G**

RF NOT JUST A FLIRT 404B

CCR COWBOY CUT 5048Z

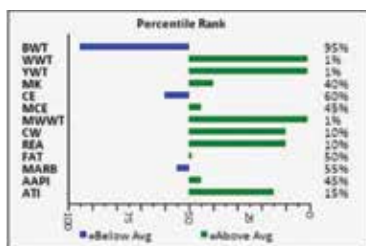
**Dam: ST PAULS CC N426 PEAR R409**

ST PAULS BMX2 F422 PEAR N426



**Comments:** AI'd to United on 28/9/24, Depastured with United from 28/9/24. Full sisters Lot 32, 36, maternal sister Lot 34.

U467 has an awesome profile, with a bit more power and growth than her sisters. Maybe the one to watch!



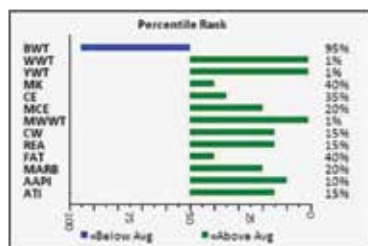
### SEPTEMBER 2024 SIMMENTAL EPDS

	CE	BW	WW	YW	Milk	MCE	MWWT	STAY	DOC	CW	REA	FAT	MARB	YG	\$ INDEX VALUES			
EPD	9.8	5.7	115.5	170.3	22.6	6.4	80.4	15.9	14.1	43.3	1.10	-0.082	0.06	-0.42	AAPI	ATI	API	TI
Acc	0.43	0.46	0.47	0.47	0.16	0.24	0.26	0.35	0.41	0.42	0.39	0.34	0.39	0.33	66.11	82.02	131.92	94.21
%Rk	60	95	1	1	40	45	1	50	30	10	10	50	55	40	45	15	35	2



A dark brown cow, likely a Jersey or Guernsey, stands in profile facing left in a grassy field. The cow has a yellow ear tag on its left ear and a small white mark on its hindquarters. The background is a blurred landscape with trees and a fence.

ST PAULS BMX2 F422 PEAR N426



A real powerhouse; certainly has attracted attention. Look at the EPD's and imagine the calf sired by United. Hard to breed them better.

	CE	BW	WW	YW	Milk	MCE	MWWT	STAY	DOC	CW	REA	FAT	MARB	YG	\$ INDEX VALUES			
EPD	12.1	5.9	111.0	162.1	22.6	7.9	78.1	18.8	16.4	41.9	1.06	-0.075	0.28	-0.39	AAPI	ATI	API	TI
Acc	0.42	0.46	0.47	0.46	0.16	0.25	0.26	0.34	0.41	0.41	0.39	0.36	0.38	0.33	82.64	83.35	150.50	96.97
%Rk	35	95	1	1	40	20	1	15	10	15	15	40	20	50	10	15	10	1

A black and white photograph of a dark-colored cow, likely a beef breed, standing in a grassy field. The cow is facing left, showing its profile. It has a thick, dark coat and a prominent hump or shoulder blade. The background is a blurred green field under bright light.

ST PAULS YELLOW LUCY N412

The number one prospect for a show heifer!

	CE	BW	WW	YW	Milk	MCE	MWWT	STAY	DOC	CW	REA	FAT	MARB	YG	\$ INDEX VALUES			
EPD	9.6	3.7	103.0	162.2	20.6	6.5	72.1	16.2	17.5	51.7	1.16	-0.093	0.11	-0.43	AAP1	ATI	API	TI
Acc	0.41	0.45	0.44	0.44	0.16	0.24	0.25	0.33	0.40	0.40	0.38	0.34	0.36	0.32	83.15	104.75	136.44	91.07
%Rk	60	75	1	1	60	40	5	45	4	3	5	70	45	35	10	4	30	5

## EMBRYO LOTS 38-47

All sires and dams have been tested homo polled and homo black. Thus all embryos are homo polled and homo black.

All embryos are direct thaws, collected and processed by David Christie. David has been our technician of choice since July 1981!

Embryos are offered in packages of 4 embryos, and sold on a per embryo basis.

Embryos are of sound quality. A warranty of 50% preg rate to 90 days over the purchasers total embryo is offered if implanted with an agreed technician.

**Embryos are stored at St Pauls Genetics storage facility.**

**St Pauls Genetics can organise shared or direct delivery of embryos at purchasers cost.**

St Pauls Genetics can introduce purchasers to Liam and Rebecca Cardile, who provide a recipient cow herd at Holbrook. They co-ordinate implantation, calving and calf raising of calves. There is a strong possibility that recipients could be available for later November.



# OPEN DAY

**SUNDAY OCTOBER 20<sup>TH</sup> 1PM-6PM**

**MONDAY OCTOBER 21<sup>ST</sup> 9AM-1PM**

**All the live lots and some of the donors  
will be on display.**





## 4 EMBRYOS by WS Proclamation E202 (P) (IMUPN202) and St Pauls Nuk P438 Pear S419 (SPGPS419)

### DONOR DAM ST PAULS NUK P438 PEAR S419

Identification No:	SPGPS419
Birth Date:	21 May 2021
Horn:	Homo. Polled (by DNA Test)
Colour:	Homo. Black (by DNA Test)

BONNYDALE AUGUSTUS L84  
**Sire: BONNYDALE NUKARA**  
BONNYDALE GEORGIA H279  
TNT TANKER U263  
**Dam: ST PAULS TANKER D270 PEAR P438**  
ST PAULS PEAR D270



**Comments:** S419 has the look, the pedigree and the EPD's to be a Foundation donor. Refer Lots 6 and 11 for dam and maternal sister. S419 is a star in the herd!

#### SEPTEMBER 2024 SIMMENTAL EPDS

	CE	BW	WW	YW	Milk	MCE	MWWT	STAY	DOC	CW	REA	FAT	MARB	YG	\$ INDEX VALUES			
EPD	11.2	2.3	89.5	139.3	19.3	8.7	64.1	21.8	13.7	47.0	1.28	-0.116	-0.18	-0.55	AAP	ATI	API	TI
Acc	0.42	0.45	0.45	0.45	0.20	0.26	0.28	0.34	0.40	0.40	0.39	0.34	0.40	0.32	90.76	97.29	130.67	77.68
%Rk	40	50	15	10	70	15	30	2	35	5	2	100	95	4	3	10	40	40

### DONOR SIRE WS PROCLAMATION (P)

Identification No:	IMUPN202
Birth Date:	21/02/2017
Horn:	Homo. Polled (by DNA Test)
Colour:	Homo. Black (by DNA Test)

TRIPLE C SINGLETARY S3H  
**Sire: CCR COWBOY CUT 5048Z**  
CCR MS 4045 TIME 7322T  
CLRS GRADE-A 875 A  
**Dam: WS MISS SUGAR C4**  
WS ANISE A71



**Comments:** Proclamation has done a superb job in our herd - moderate BWT, CE, daughters with magnificent udders, volume. This mating represents 3/4 siblings to Lot 11. Proclamation truly complements S419, the total balance of EPD's, looks and pedigree will be next level.

#### SEPTEMBER 2024 SIMMENTAL EPDS

	CE	BW	WW	YW	Milk	MCE	MWWT	STAY	DOC	CW	REA	FAT	MARB	YG	\$ INDEX VALUES			
EPD	13.3	0.4	96.9	144.1	26.8	7.8	75.3	17.8	18.1	36.8	0.49	-0.043	0.59	-0.15	AAP	ATI	API	TI
Acc	0.84	0.95	0.93	0.93	0.84	0.82	0.87	0.72	0.89	0.78	0.76	0.69	0.76	0.59	84.93	74.98	170.52	102.35
%Rk	25	25	3	5	15	20	2	25	3	25	95	15	2	95	10	25	1	1



## 4 EMBRYOS by KBHR Global J138 (IMU3S0138) and St Pauls Nuk P438 Pear S419 (SPGPS419)

### DONOR DAM ST PAULS NUK P438 PEAR S419

Identification No:	SPGPS419
Birth Date:	21 May 2021
Horn:	Homo. Polled (by DNA Test)
Colour:	Homo. Black (by DNA Test)

BONNYDALE AUGUSTUS L84  
**Sire: BONNYDALE NUKARA**  
 BONNYDALE GEORGIA H279  
 TNT TANKER U263  
**Dam: ST PAULS TANKER D270 PEAR P438**  
 ST PAULS PEAR D270



**Comments:** S419 has the look, the pedigree and the EPD's to be a Foundation donor. Refer Lots 6 and 11 for dam and maternal sister. S419 is a star in the herd!

#### SEPTEMBER 2024 SIMMENTAL EPDS

	CE	BW	WW	YW	Milk	MCE	MWWT	STAY	DOC	CW	REA	FAT	MARB	YG	\$ INDEX VALUES			
EPD	11.2	2.3	89.5	139.3	19.3	8.7	64.1	21.8	13.7	47.0	1.28	-0.116	-0.18	-0.55	AAP	ATI	API	TI
Acc	0.42	0.45	0.45	0.45	0.20	0.26	0.28	0.34	0.40	0.40	0.39	0.34	0.40	0.32	90.76	97.29	130.67	77.68
%Rk	40	50	15	10	70	15	30	2	35	5	2	100	95	4	3	10	40	40

### DONOR SIRE KBHR GLOBAL J138

Identification No:	IMU3S0138
Birth Date:	23/03/2021
Horn:	Homo. Polled (by DNA Test)
Colour:	Homo. Black (by DNA Test)

CCR COWBOY CUT 5048Z  
**Sire: WS PROCLAMATION E202**  
 WS MISS SUGAR C4  
 WS HOT BEEF X38  
**Dam: BAR CK MS X38 106Z**  
 BAR CK MS MEAT MKR 323T



**Comments:** Global is an exclusive sire to Woonallee for Australia, we bought the semen package from their last sale. Here is the opportunity to access Global's genetics. Global was the high priced bull at the KBHR sale. He is a tremendous sire, incredible phenotype, data and wonderful temperament. His dam is one of the sought after donors in the US. Global's mating to S419 is so well suited. Certainly an embryo combination not to be missed.

#### SEPTEMBER 2024 SIMMENTAL EPDS

	CE	BW	WW	YW	Milk	MCE	MWWT	STAY	DOC	CW	REA	FAT	MARB	YG	\$ INDEX VALUES			
EPD	17.6	-2.1	76.5	124.4	23.9	11.7	62.2	21.1	17.6	26.6	0.64	-0.057	0.65	-0.28	AAP	ATI	API	TI
Acc	0.72	0.86	0.78	0.78	0.31	0.40	0.47	0.44	0.67	0.56	0.54	0.50	0.54	0.45	84.54	50.76	185.27	96.20
%Rk	2	3	55	35	30	1	40	3	4	60	80	20	1	85	10	60	1	2





## 4 EMBRYOS by RF Caliber 014G (IMCPQ0444) and St Pauls Nuk P438 Pear S419 (SPGPS419)

### DONOR DAM ST PAULS NUK P438 PEAR S419

Identification No:	SPGPS419
Birth Date:	21 May 2021
Horn:	Homo. Polled (by DNA Test)
Colour:	Homo. Black (by DNA Test)

BONNYDALE AUGUSTUS L84  
**Sire: BONNYDALE NUKARA**  
 BONNYDALE GEORGIA H279  
 TNT TANKER U263  
**Dam: ST PAULS TANKER D270 PEAR P438**  
 ST PAULS PEAR D270



**Comments:** S419 has the look, the pedigree and the EPD's to be a Foundation donor. Refer Lots 6 and 11 for dam and maternal sister. S419 is a star in the herd!

#### SEPTEMBER 2024 SIMMENTAL EPDS

	CE	BW	WW	YW	Milk	MCE	MWWT	STAY	DOC	CW	REA	FAT	MARB	YG	\$ INDEX VALUES			
EPD	11.2	2.3	89.5	139.3	19.3	8.7	64.1	21.8	13.7	47.0	1.28	-0.116	-0.18	-0.55	AAP	ATI	API	TI
Acc	0.42	0.45	0.45	0.45	0.20	0.26	0.28	0.34	0.40	0.40	0.39	0.34	0.40	0.32	90.76	97.29	130.67	77.68
%Rk	40	50	15	10	70	15	30	2	35	5	2	100	95	4	3	10	40	40

### DONOR SIRE RF CALIBER 014G

Identification No:	IMCPQ0444
Birth Date:	30/12/2019
Horn:	Homo. Polled (by DNA Test)
Colour:	Homo. Black (by DNA Test)

NCB COBRA 47Y  
**Sire: NGDB STRUCTURE 34D**  
 NGDB LOUISE 411 B  
 SVS CAPTAIN MORGAN 11Z  
**Dam: RF NOT JUST A FLIRT 404B**  
 RF CERTAINLY FLIRTIN 202Z



**Comments:** Caliber was the \$150K high seller at the Ranchier Farms 2021 sale. The maternal side of his pedigree 5 generations of donor females that are some of the Canadian Simmental great matrons. We like the powerful phenotype, the mass, and the maternal strength Caliber offers.

#### SEPTEMBER 2024 SIMMENTAL EPDS

	CE	BW	WW	YW	Milk	MCE	MWWT	STAY	DOC	CW	REA	FAT	MARB	YG	\$ INDEX VALUES			
EPD	8.9	4.9	117.2	176.3	19.8	6.2	78.4	12.7	17.1	56.7	1.12	-0.061	-0.06	-0.32	AAP	ATI	API	TI
Acc	0.62	0.79	0.71	0.71	0.21	0.40	0.38	0.40	0.56	0.55	0.49	0.39	0.44	0.40	77.42	116.08	120.49	92.69
%Rk	70	90	1	1	65	45	1	80	5	1	10	25	80	75	20	2	65	3



## 4 EMBRYOS by LFE The Riddler (IMCPK323) and St Pauls Nuk N401 Pear Q424 (SPGPQ424)

### DONOR DAM ST PAULS NUK N401 PEAR Q424

Identification No:	SPGPQ424
Birth Date:	22 August 2019
Horn:	Homo. Polled (by DNA Test)
Colour:	Homo. Black (by DNA Test)

BONNYDALE AUGUSTUS L84  
**Sire: BONNYDALE NUKARA**  
BONNYDALE GEORGIA H279  
HOOK'S YELLOWSTONE 97Y  
**Dam: ST PAULS YELLOW L423 PEAR N401**  
ST PAULS CATALYST D270 PEAR L423



**Comments:** Refer Lot 8. These are the last of the Q424 embryos we have to offer. We have 3 daughters in the herd. Q424 was the pick of the females of the Q drop. Her sons by Essential are in the top 1% of 320,000 head tested worldwide on grow safe for daily gain.

#### SEPTEMBER 2024 SIMMENTAL EPDS

	CE	BW	WW	YW	Milk	MCE	MWWT	STAY	DOC	CW	REA	FAT	MARB	YG	\$ INDEX VALUES			
EPD	14.8	0.5	86.4	138.6	28.8	8.1	72.0	15.9	13.0	30.7	0.98	-0.080	0.18	-0.43	AAP	ATI	API	TI
Acc	0.46	0.46	0.48	0.49	0.24	0.29	0.32	0.37	0.42	0.43	0.41	0.37	0.43	0.35	56.00	53.01	145.43	88.13
%Rk	15	25	20	10	10	20	5	50	45	45	25	50	35	40	70	60	15	10

### DONOR SIRE LFE THE RIDDLER 323B

Identification No:	IMCPK323
Birth Date:	04 January 2014
Horn:	Homo. Polled (by DNA Test)
Colour:	Homo. Black (by DNA Test)

LFE THE DARK NIGHT 350U  
**Sire: LFE GOTHAM 819Y**  
LFE BEST LADY 47W  
TNT TANKER U263  
**Dam: LFE BS CHARO 23Y**  
LFE CHARO 3N



**Comments:** Riddler, growth, thickness and great progeny eye appeal will be complimented with everything Q424 has to offer. A great balance of EPD's.

#### SEPTEMBER 2024 SIMMENTAL EPDS

	CE	BW	WW	YW	Milk	MCE	MWWT	STAY	DOC	CW	REA	FAT	MARB	YG	\$ INDEX VALUES			
EPD	8.6	3.7	102.4	164.7	19.3	7.4	70.5	13.0	12.3	43.0	1.03	-0.081	0.02	-0.40	AAP	ATI	API	TI
Acc	0.75	0.92	0.90	0.90	0.84	0.78	0.86	0.72	0.83	0.71	0.67	0.56	0.65	0.53	48.14	75.32	124.01	88.24
%Rk	70	75	1	1	70	25	10	80	55	10	15	50	65	50	85	25	55	10





## 4 EMBRYOS by CCR Cowboy Cut 5048Z (IMUPH5048) and St Pauls Blaze Pear M421 (SPGPM421)

### DONOR DAM ST PAULS BLAZE PEAR M421

Identification No:	SPGPM421
Birth Date:	07 December 2016
Horn:	Homo. Polled (by DNA Test)
Colour:	Homo. Black (by DNA Test)

MR NLC SUPERIOR S6018  
**Sire: TNT TANKER U263**  
TNT MISS S17  
CIRCLE T ANTOINETTES STAR  
**Dam: ST PAULS STAR BLAZE PEAR G430**  
ST PAULS PEAR D270



**Comments:** M421, sold in last year's sale as a feature. We loved her length and strength of topline. She milks well and has a tight balanced udder. She is a maternal sister to our famed Pear M412 donor, Australia's current most prolific cow. M412 progeny have sold near \$200K of progeny, her sons and daughters have topped our sales. Show success as well with bull calf champion at Sydney Feature in 2022. M421 adds some bling to those that wish blaze and broken colour faces.

#### SEPTEMBER 2024 SIMMENTAL EPDS

	CE	BW	WW	YW	Milk	MCE	MWWT	STAY	DOC	CW	REA	FAT	MARB	YG	\$ INDEX VALUES			
EPD	4.9	4.3	80.1	121.3	28.3	4.2	68.4	17.2	10.1	30.8	1.00	-0.089	-0.07	-0.45	AAP	ATI	API	TI
Acc	0.45	0.46	0.47	0.47	0.27	0.32	0.34	0.39	0.44	0.44	0.44	0.41	0.45	0.37	57.25	56.10	110.53	71.34
%Rk	95	85	40	40	10	75	15	35	85	45	20	65	85	25	70	55	80	75

### DONOR SIRE CCR COWBOY CUT 5048Z

Identification No:	IMUPH5048
Birth Date:	20/02/2012
Horn:	Homo. Polled (by DNA Test)
Colour:	Homo. Black (by DNA Test)

HOOK'S SHEAR FORCE 38K  
**Sire: TRIPLE C SINGLETARY S3H**  
LUCAS JOSIE 19K  
HTP SVF IN DEW TIME  
**Dam: CCR MS 4045 TIME 7322T**  
CCR MS PRETTY 4045P



**Comments:** Cowboy Cut is perhaps the modern day legendary bull for Black Simmental. Progeny, grand progeny are in many pedigrees. Sons such as Proclamation and grandsons like Genesis and Global carry his legacy forward. This mating will produce 3/4 siblings to M412!

#### SEPTEMBER 2024 SIMMENTAL EPDS

	CE	BW	WW	YW	Milk	MCE	MWWT	STAY	DOC	CW	REA	FAT	MARB	YG	\$ INDEX VALUES			
EPD	11.2	2.7	94.7	134.2	21.9	7.6	69.3	18.3	17.3	27.7	0.74	-0.051	0.44	-0.29	AAP	ATI	API	TI
Acc	0.86	0.95	0.95	0.95	0.93	0.90	0.94	0.87	0.93	0.88	0.83	0.81	0.84	0.63	80.35	55.27	155.04	93.96
%Rk	40	60	5	15	45	25	10	20	4	55	65	20	10	80	15	55	5	3



## 4 EMBRYOS by Gibbs 9114G Essential (IMU3Q9114) and Valley Creek Glendive N020 (ZMJPN020)

### DONOR DAM VALLEY CREEK GLENDIVE N020

Identification No:	ZMJPN020
Birth Date:	21/10/2017
Horn:	Homo. Polled (by DNA Test)
Colour:	Homo. Black (by DNA Test)

SRS RIGHT-ON 22R  
**Sire: VALLEY CREEK KNOXVILLE**  
 LANCASTER POPPY B379  
 BONNYDALE BLACK HAWK H274  
**Dam: BONNYDALE GLENDIVE K199**  
 BONNYDALE GLENDIVE E239



**Comments:** N020, we purchased as the highest seller heifer from the Valley Creek sale of 2019. She had three very good progeny and joined our donor pen. She flushed very well. We have 5 ET daughters in the herd and decided to sell her in the 2023 Autumn sale. N020 mating to Essential has been outstanding with calves in the other stud herds already, plus we have full sibs already in the herd. This is the last of her embryos we have to offer.

#### SEPTEMBER 2024 SIMMENTAL EPDS

	CE	BW	WW	YW	Milk	MCE	MWWT	STAY	DOC	CW	REA	FAT	MARB	YG	\$ INDEX VALUES			
EPD	5.7	5.4	86.3	131.8	33.7	2.7	76.9	20.5	13.6	39.6	1.07	-0.099	0.16	-0.46	AAP	ATI	API	TI
Acc	0.44	0.45	0.46	0.46	0.25	0.27	0.32	0.33	0.39	0.42	0.39	0.35	0.40	0.33	81.04	79.67	131.94	80.49
%Rk	90	95	20	20	1	90	1	5	35	15	15	85	35	25	15	20	35	30

### DONOR SIRE GIBBS 9114G ESSENTIAL (P)

Identification No:	IMU3Q9114
Birth Date:	05/09/2019
Horn:	Homo. Polled (by DNA Test)
Colour:	Homo. Black (by DNA Test)

CCR WIDE RANGE 9005A  
**Sire: GIBBS 7382 BROAD RANGE**  
 SSF BLK LOUISE Y534  
 HOOK'S BROADWAY 11B  
**Dam: GIBBS 7153E STAR 3136A**  
 GIBBS 3136A STAR 0589X



**Comments:** Refer to comments on reference sires. A mating prediction for this lot forecasts WW, YW and CW in top 5%. Carcass REA, Marbling top 2% and 10% respectively, Milk top 1% and Indexes TI top 1% and API top 10%. We have 4 full sisters to this mating retained in the St Pauls herd. Certainly a combination to consider.

#### SEPTEMBER 2024 SIMMENTAL EPDS

	CE	BW	WW	YW	Milk	MCE	MWWT	STAY	DOC	CW	REA	FAT	MARB	YG	\$ INDEX VALUES			
EPD	15.4	-2.0	99.7	171.3	35.3	9.3	85.2	16.3	19.7	63.2	1.52	-0.006	0.44	-0.28	AAP	ATI	API	TI
Acc	0.73	0.90	0.87	0.85	0.40	0.56	0.56	0.45	0.79	0.67	0.62	0.52	0.65	0.50	94.04	130.19	172.88	106.70
%Rk	10	4	2	1	1	10	1	45	1	1	1	2	10	85	2	1	1	1





## 4 EMBRYOS by LFE The Riddler (IMCPK323) and St PaulsCC F422 Pear P401 (SPGPP401)

### DONOR DAM ST PAULS CCF422 PEAR P401

Identification No:	SPGPP401
Birth Date:	01/01/2018
Horn:	Homo. Polled (by DNA Test)
Colour:	Hetero Black (by DNA Test)

TRIPLE C SINGLETARY S3H  
**Sire: CCR COWBOY CUT 5048Z**  
CCR MS 4045 TIME 7322T  
WS BEEF MAKER R13  
**Dam: ST PAULS BM PEAR F422**  
ST PAULS DREAM PEAR D402



**Comments:** P401 was a feature cow in the autumn sale, she sold as second highest seller. A female that breeds length, skin type and carcass. Her daughters R320 and R459 were other features and high sellers of the sale. Her dam is the grand dam of R409 and R412, check out Lots 32-36 to see just how well this family line is breeding.

#### SEPTEMBER 2024 SIMMENTAL EPDS

	CE	BW	WW	YW	Milk	MCE	MWWT	STAY	DOC	CW	REA	FAT	MARB	YG	\$ INDEX VALUES			
EPD	11.3	2.4	81.9	114.0	19.9	7.4	60.9	21.7	14.6	30.6	1.02	-0.100	0.19	-0.49	AAP	ATI	API	TI
Acc	0.47	0.48	0.48	0.49	0.29	0.34	0.35	0.43	0.46	0.48	0.47	0.44	0.49	0.40	92.04	67.19	144.60	81.02
%Rk	40	55	35	55	65	25	45	2	25	45	20	85	30	15	3	35	15	25

### DONOR SIRE LFE THE RIDDLER 323B

Identification No:	IMCPK323
Birth Date:	04 January 2014
Horn:	Homo. Polled (by DNA Test)
Colour:	Homo. Black (by DNA Test)

LFE THE DARK NIGHT 350U  
**Sire: LFE GOTHAM 819Y**  
LFE BEST LADY 47W  
TNT TANKER U263  
**Dam: LFE BS CHARO 23Y**  
LFE CHARO 3N



**Comments:** Riddler, growth, thickness and great progeny eye appeal will be complimented her with everything P401 has to offer.

#### SEPTEMBER 2024 SIMMENTAL EPDS

	CE	BW	WW	YW	Milk	MCE	MWWT	STAY	DOC	CW	REA	FAT	MARB	YG	\$ INDEX VALUES			
EPD	8.6	3.7	102.4	164.7	19.3	7.4	70.5	13.0	12.3	43.0	1.03	-0.081	0.02	-0.40	AAP	ATI	API	TI
Acc	0.75	0.92	0.90	0.90	0.84	0.78	0.86	0.72	0.83	0.71	0.67	0.56	0.65	0.53	48.14	75.32	124.01	88.24
%Rk	70	75	1	1	70	25	10	80	55	10	15	50	65	50	85	25	55	10



## 4 EMBRYOS by Gibbs 9114G Essential (IMU3Q9114) and St Pauls Pear D270 (SPGPD270)

### DONOR DAM ST PAULS PEAR D270

Identification No:	SPGPD270
Birth Date:	16 October 2008
Horn:	Homo. Polled (by DNA Test)
Colour:	Homo. Black (by DNA Test)

SRS J914 PREFERRED BEEF  
**Sire: ES DAKOTA NK68**  
ESK68  
PPSR MONTANA IRISH 107D  
**Dam: MISS PRICKLY PEAR 615F**  
MISS PRICKLY PEAR 318C



**Comments:** D270 has been a cornerstone in our herd. She is still breeding on at 16yo. Her influence in the herd has been superb. She is in the pedigree of Lots 3, 4, 6, 7, 8, 11, 15, 17,20, 25, what a legend she is.

#### SEPTEMBER 2024 SIMMENTAL EPDS

	CE	BW	WW	YW	Milk	MCE	MWWT	STAY	DOC	CW	REA	FAT	MARB	YG	\$ INDEX VALUES			
EPD	0.1	7.1	79.9	129.7	31.6	0.8	71.6	17.2	10.9	34.5	0.86	-0.099	-0.10	-0.42	AAP	ATI	API	TI
Acc	0.52	0.55	0.54	0.55	0.43	0.39	0.47	0.43	0.45	0.52	0.48	0.43	0.51	0.40	53.88	59.88	99.00	66.67
%Rk	100	100	40	20	2	100	10	35	75	30	45	85	90	40	75	45	95	90

### DONOR SIRE GIBBS 9114G ESSENTIAL (P)

Identification No:	IMU3Q9114
Birth Date:	05/09/2019
Horn:	Homo. Polled (by DNA Test)
Colour:	Homo. Black (by DNA Test)

CCR WIDE RANGE 9005A  
**Sire: GIBBS 7382 BROAD RANGE**  
SSF BLK LOUISE Y534  
HOOK'S BROADWAY 11B  
**Dam: GIBBS 7153E STAR 3136A**  
GIBBS 3136A STAR 0589X



**Comments:** Refer to comments on reference sires. A mating prediction for this lot forecasts WW, YW and CW in top 5%. Carcass REA, Marbling top 2% and 10% respectively, Milk top 1% and Indexes TI top 1% and API top 10%. This embryo combination is combining the power of EPD's and phenotype.

#### SEPTEMBER 2024 SIMMENTAL EPDS

	CE	BW	WW	YW	Milk	MCE	MWWT	STAY	DOC	CW	REA	FAT	MARB	YG	\$ INDEX VALUES			
EPD	15.4	-2.0	99.7	171.3	35.3	9.3	85.2	16.3	19.7	63.2	1.52	-0.006	0.44	-0.28	AAP	ATI	API	TI
Acc	0.73	0.90	0.87	0.85	0.40	0.56	0.56	0.45	0.79	0.67	0.62	0.52	0.65	0.50	94.04	130.19	172.88	106.70
%Rk	10	4	2	1	1	10	1	45	1	1	1	2	10	85	2	1	1	1





## 4 EMBRYOS by RF Caliber 014G (IMCPQ0444) and Lancaster Strike M432 (LCSPM432)

### DONOR DAM LANCASTER STRIKE M432

Identification No:	LCSPM432
Birth Date:	10 August 2016
Horn:	Homo. Polled (by DNA Test)
Colour:	Homo. Black (by DNA Test)

LANCASTER FIXIT F307  
**Sire: LANCASTER HIGH PROFILE H338**  
LANCASTER ERICA A329  
GW COMFORT ZONE 651Y  
**Dam: LANCASTER STRIKE J183**  
LANCASTER C370



Comments: Refer Lot 5.

#### SEPTEMBER 2024 SIMMENTAL EPDS

	CE	BW	WW	YW	Milk	MCE	MWWT	STAY	DOC	CW	REA	FAT	MARB	YG	\$ INDEX VALUES			
EPD	15.1	0.7	68.1	103.6	38.8	7.5	72.9	15.3	15.7	28.5	1.00	-0.114	-0.04	-0.53	AAP	ATI	API	TI
Acc	0.47	0.50	0.45	0.46	0.26	0.29	0.32	0.37	0.41	0.44	0.40	0.36	0.42	0.34	78.11	62.70	123.76	72.27
%Rk	10	25	80	80	1	25	4	55	15	55	20	95	80	10	15	40	55	70

### DONOR SIRE RF CALIBER 014G

Identification No:	IMCPQ0444
Birth Date:	30/12/2019
Horn:	Homo. Polled (by DNA Test)
Colour:	Homo. Black (by DNA Test)

NCB COBRA 47Y  
**Sire: NGDB STRUCTURE 34D**  
NGDB LOUISE 411 B  
SVS CAPTAIN MORGAN 11Z  
**Dam: RF NOT JUST A FLIRT 404B**  
RF CERTAINLY FLIRTIN 202Z



Comments: Caliber was the \$150K high seller at the Ranchier Farms 2021 sale. The maternal side of his pedigree 5 generations of donor females that are some of the Canadian Simmental great matrons. We like the powerful phenotype, the mass, and the maternal strength Caliber offers. We have 3 full sisters born recently to this mating, hence we are offering these embryos.

#### SEPTEMBER 2024 SIMMENTAL EPDS

	CE	BW	WW	YW	Milk	MCE	MWWT	STAY	DOC	CW	REA	FAT	MARB	YG	\$ INDEX VALUES			
EPD	8.9	4.9	117.2	176.3	19.8	6.2	78.4	12.7	17.1	56.7	1.12	-0.061	-0.06	-0.32	AAP	ATI	API	TI
Acc	0.62	0.79	0.71	0.71	0.21	0.40	0.38	0.40	0.56	0.55	0.49	0.39	0.44	0.40	77.42	116.08	120.49	92.69
%Rk	70	90	1	1	65	45	1	80	5	1	10	25	80	75	20	2	65	3



## 4 EMBRYOS by LBRS Genesis G69 (IMU3Q069) and Lancaster Strike M432 (LCSPM432)

### DONOR DAM LANCASTER STRIKE M432

Identification No:	LCSPM432
Birth Date:	10 August 2016
Horn:	Homo. Polled (by DNA Test)
Colour:	Homo. Black (by DNA Test)

LANCASTER FIXIT F307  
**Sire: LANCASTER HIGH PROFILE H338**  
LANCASTER ERICA A329  
GW COMFORT ZONE 651Y  
**Dam: LANCASTER STRIKE J183**  
LANCASTER C370



Comments: Refer Lot 5.

#### SEPTEMBER 2024 SIMMENTAL EPDS

	CE	BW	WW	YW	Milk	MCE	MWWT	STAY	DOC	CW	REA	FAT	MARB	YG	\$ INDEX VALUES			
EPD	15.1	0.7	68.1	103.6	38.8	7.5	72.9	15.3	15.7	28.5	1.00	-0.114	-0.04	-0.53	AAP	ATI	API	TI
Acc	0.47	0.50	0.45	0.46	0.26	0.29	0.32	0.37	0.41	0.44	0.40	0.36	0.42	0.34	78.11	62.70	123.76	72.27
%Rk	10	25	80	80	1	25	4	55	15	55	20	95	80	10	15	40	55	70

### DONOR SIRE LBRS GENESIS G69

Identification No:	IMU3Q069
Birth Date:	31 January 2019
Horn:	Homo. Polled (by DNA Test)
Colour:	Homo. Black (by DNA Test)

CCR COWBOY CUT 5048Z  
**Sire: WS PROCLAMATION E202**  
WS MISS SUGAR C4  
HOOK'S XAVIER 14X  
**Dam: LBR DIANA D69**  
LBR DOUBLE TAKE X14



Comments: Genesis is a growth bull. He was the standout of the 2020 bulls of the Big Sky sale. He offers fault free genetics for growth, maternal, carcass and \$ Index Values, few sires rank top 1% on all 4 Indexes. First calves here certainly have some eye appeal. The mating to M432 really is so complementary in EPD's and phenotype.

#### OCTOBER 2024 SIMMENTAL EPDS

	CE	BW	WW	YW	Milk	MCE	MWWT	STAY	DOC	CW	REA	FAT	MARB	YG	\$ INDEX VALUES			
EPD	9.1	2.8	112.9	171.5	24.3	4.1	80.8	15.3	17.2	69.7	0.95	-0.019	0.93	-0.10	AAP	ATI	API	TI
Acc	0.70	0.92	0.89	0.89	0.60	0.63	0.70	0.48	0.83	0.71	0.66	0.60	0.69	0.53	99.16	150.90	181.17	116.73
%Rk	65	60	1	1	30	80	1	55	5	1	30	5	1	100	1	1	1	1

## SEMEN LOTS 48-63

All semen is stored at St Pauls Genetics facility, Henty NSW.

Semen could be sent to most semen resellers for a small shared charge.

**ALL SEMEN SIRES IN LOTS 48 TO 63 ARE PUREBRED HOMO POLLED SIMMENTAL.**



No. of Units	SIRE	Australian Simmental Ident.
10	BONNYDALE ULYSSES U220	MBBPU220

**Comments:** See Reference Sires.

Ulysses is homo polled, homo black. We purchased him as a yearling Lot 3 at Bonnydale this year.

Superior structured bull.



No. of Units	SIRE	Australian Simmental Ident.
10	BONNYDALE ULYSSES U220	MBBPU220

**Comments:** See Lot 48. Also refer to reference sire notes.



No. of Units	SIRE	Australian Simmental Ident.
10	ST PAULS QUO VADIS Q420	SPGPQ420

**Comments:** Quo Vadis, we used on heifers, he has good CE, moderate birth, high carcass traits in REA and Marbling. His progeny include the high seller heifer Lucy T427 and Trucks T483, the Royal Adelaide Show 2023 Champion Heavyweight and Purebred Steer on Hook and Reserve Champion Lightweight Steer.

### SCARCE LIMITED BLACK SIMMENTAL SEMEN



No. of Units	SIRE	Australian Simmental Ident.
4	BONNYDALE NUKARA	MBBPN073

**Comments:** Nukara has been the No. 1 registration sire in the breed on two occasions. His progeny are in all Australian states. Sons sold to \$30,000. There is only 40 units left, we offer these as potentially the last offering. Last sale was \$140/straw. See reference sires for photo.



No. of Units	SIRE	Australian Simmental Ident.
2	CCR COWBOY CUT 5048Z	IMUPH5048

**Comments:** The legend of the Black Simmental breed. Semen is rare and hard to find.

Last known sale March 2023 at \$330/unit.



No. of Units	SIRE	Australian Simmental Ident.
2	HOOKE'S YELLOWSTONE	IMU3G097

**Comments:** Few bulls have as much length and size as Yellowstone. Although a 2011 born bull his EPD balance is hard to match. The last two straws we have.





No. of Units	SIRE	Australian Simmental Ident.
5	DUAME LEGEND	IMUPX081+02

**Comments:** USA ABS bull that came to Australia. A bull with power and growth, whilst a 2002 born bull he is still in the top 1% of breed for yearly weight. His dam had embryos come to Australia. Her daughter 594R was the highest performance female in her year. We bought embryos to Australia and started the Lucy family!!!



No. of Units	SIRE	Australian Simmental Ident.
4	OVAL FALL TIME (SEXED FEMALE)	IMU3J322

**Comments:** A balanced bull with high milk, solid carcass.  
An opportunity for those wanting heifers only.



No. of Units	SIRE	Australian Simmental Ident.
4	TNT TANKER U263	IMUPD263

**Comments:** Certainly a legend of the breed, 800 recorded progeny in Australia.  
Tanker adds growth, milk, REA. Daughters are great.



No. of Units	SIRE	Australian Simmental Ident.
5	GW LUCKY DICE 187H	IMUPT187+98

**Comments:** One of the early bulls to Australia, sire of Legend (Lot 54). Still adds YW, Marbling and REA.  
Can add white on occasions.



No. of Units	SIRE	Australian Simmental Ident.
6	GW LUCKY ONE 686K	PEDBX1657

**Comments:** A 2000 born bull ex Gate Way. Claim to fame is he adds heaps of marbling. Used as a donor sire on imported embryos. 190 progeny registered in Australia through embryos.  
Not a current Australian registered Sim sire.

## BLACK SIMMENTAL WITH WHITE ON FACE



No. of Units	SIRE	Australian Simmental Ident.
10	CIRCLE T ANTOINETTE STAR	IMUPZ012

**Comments:** An ABS USA sire that came to Australia. Perhaps the best body type Dream On son. Out of the famed Antoinette K205. 'Star' added style and body shape.  
He will add blaze and broken colour to faces.



No. of Units	SIRE	Australian Simmental Ident.
4	ASR LONGEVITY Y184	IMUPG184

**Comments:** A baldy faced, sound bodied bull, with a look.



No. of Units	SIRE	Australian Simmental Ident.
10	NLC FORTUNATE SON	IMU3Y100+03

**Comments:** A 2003 bull brought in from ABS USA. A direct son of SRS Fortune 500. Fortunate Son will on many occasions add white on faces. His looks and style were superb. Daughters milked very well.

## SOLID RED SIMMENTAL



No. of Units	SIRE	Australian Simmental Ident.
6	WS BEEF MAKER (Red) R13	IMUPA013

**Comments:** A 2005 born Red bull. Certainly a star in the breed, wonderful progeny. Still today he is in the top 30% for all but 2 traits. Still in the top 5% for TI and API. If you are seriously breeding Red Sims you need to use Beefmaker! Last 6 straws we have.



No. of Units	SIRE	Australian Simmental Ident.
8	RFS RED IRON T20	IMUPC020

**Comments:** A 2007 Red bull I saw in USA and brought in the only 100 or so doses that qualified. Bull had enormous capacity and volume, medium framed, big REA top 1% and marbling top 20%.



Lot 50 St Pauls Quo Vadis Q420



Lot 54 Daume Legend



Lot 55 All Time (sexed female)



Lot 58 Lucky One



Lot 59 Star



Lot 60 Longevity Y184



Lot 61 Fortunate Son 100N



Lot 62 Beef Maker



Lot 63 Red Iron

# What St Pauls Black Simmental sires can offer to a commercial cow herd

The bulls are Homo Polled and Homo Black, genomically tested and have IGS EPDs.

- Progeny with increased terminal growth of 10 to 20%.
- Increased maternal heterosis, retained heifers that can produce 25-30% more lifetime production. Heifers have 5% or better conception rates.
- Stayability and sustainability for a world looking for these traits.
- Progeny with more power and shape, better immune response.
- All progeny are black hidcd.

## ANGUS COMPLEMENTARITY!

With all the above hybrid advantages, many may be asked can sires of different breeds be compared. Through IGS Global Multi Breed data with over 22 million animals the answer is YES.

The table below shows a comparison of Angus and Black Simmentals sires.

From the Australian Angus database 9 of the top 20 sires for most progeny in the previous 2 years to March 2024 are also in the IGS database with EPDs.

Compared to 3 Black Simmental sires. These sires are in the top 20 for Australian and USA sires for number of progeny. These sires are the sires of over 70% of the bulls in this sale.

ANGUS		CE	BW	WW	YW	ADG	MCE	MILK	MWW	STAY	DOC	CW	YG	MARB	Bfat	REA	API	TI
Millah Murrah Paratrooper	EPD	16.2	-1.3	90.5	149	0.37	11.5	20.8	66	10.9	8.7	62.4	0.18	0.95	0.023	0.31	150.8	92.3
Chiltern Park Moe	EPD	12.2	0	65.8	102.8	0.23	7	22.8	55.6	3.9	8.4	29.7	-0.09	0.34	-0.017	0.41	85.3	60.8
Sterling Pacific	EPD	15.9	-0.1	94.1	164	0.44	10.7	12.8	60	11.3	15.3	74.7	0.3	1.16	0.056	0.36	163.1	97.5
Rennylea L519	EPD	9.8	0.9	82.1	142.1	0.37	8.1	28.6	71.3	13.8	14.7	54.1	0.15	1.06	0.036	0.41	148	87.7
GAR Hometown	EPD	19.4	-3	77.4	138.9	0.38	13.3	18.8	58	10.6	13.6	60.5	-0.04	1.29	0.001	0.79	173.9	96.7
Sitz Stellar 726D	EPD	13.1	-2.7	84.7	149.2	0.4	6.6	18.7	63.2	15.2	12.9	56	0.38	0.59	0.089	0.12	136.4	80.5
Baldrige 38 Special	EPD	14.2	-2.2	92.3	152.1	0.37	11.2	29.8	75.6	16.7	12.5	56.4	0.3	0.97	0.061	0.16	162.7	95.1
Baldrige SR Goalkeeper	EPD	12.2	-0.7	83.9	155	0.44	3.6	25.8	67.5	12.4	14.6	58.8	0.06	1.06	0.029	0.67	154.9	92.1
GB Fireball	EPD	18.5	-2.2	81.2	142.4	0.38	14.9	25.8	67	2.4	12.8	59.2	-0.08	1.45	0	0.88	181	113
The average EPDS		14.61	-1.26	83.56	143.94	0.38	9.66	22.66	64.91	10.80	12.61	56.87	0.13	0.99	0.03	0.46	150.68	90.63
average accuracy		71%	70%	67%	68%	68%	60%	51%	51%	18%	64%	50%	40%	60%	54%	46%		
Percentile Band for trait		25	25	24	10	3	10	60	35	85	45	5	99	2	99	85	23	20
BLACK SIMMENTAL		CE	BW	WW	YW	ADG	MCE	MILK	MWW	STAY	DOC	CW	YG	MARB	Bfat	REA	API	TI
Gibbs 9114G Essential	EPD	15.8	-1.8	101	170.5	0.43	9.6	29.4	79.8	16.7	19.6	62.7	-0.28	0.44	-0.007	1.51	173.7	106.4
WS Proclamation N202	EPD	13.4	0.4	96.8	144.1	0.3	7.9	27.1	75.5	18.3	17.9	36.6	-0.15	0.59	-0.043	0.49	171.9	102.5
Bonnydale Nukara	EPD	20.2	-2.2	84.4	129.7	0.28	11.7	13.1	55.1	22.3	14.5	36.4	-0.51	-0.05	-0.1	1.17	156.2	83.5
Average EPDS		16.47	-1.20	94.07	148.10	0.34	9.73	23.20	70.13	19.10	17.33	45.23	-0.31	0.33	-0.05	1.06	167.27	97.47
average accuracy		74%	87%	83%	83%	83%	58%	52%	60%	52%	75%	64%	48%	65%	54%	59%		
Percentile Band for trait		10	27	4	5	8	12	55	15	8	6	16	20	55	35	5	7	5

Summary of the EPD averages of the Angus most used sires vs the 3 highly used Black Simmental sires based in the IGS Multi Breed Global Database.

The Black Simmental sires lead the Angus sires for Calving Ease, Weaning and Yearling Weight, Stayability, Docility, Yield Grade, Rib Eye Area and the All Purpose and Terminal Indexes. And similar in traits for Birth Weight, Milk, Maternal Calving Ease.



**Hybrid Vigour/Heterosis** is used in many agricultural production systems, here is an easy one for many commercial beef producers -

**Using Black Simmental bulls over Angus commercial females, the black hide remains and no horns. The progeny fit many Angus branded product lines.**

Review all the advantages of hybrid vigour -

- improved fertility, growth, longevity and immune response
- improved power, mass and general structure.

**St Pauls Black Simmental sires offers total**

**ANGUS COMPLEMENTARITY!**

So why not try a sire, chances are the purchase price will be less than an Angus but be more profitable!

**A WIN, WIN, WIN, situation.**

\*Author has used MARC data 1974 to present, Heartland Cattle Co and industry references and data for this article.

\*\*Black Simmental have been developed over a 50 year period using Simmental and Angus genetics. Pure graded Black Simmental usually carry 15-20% Angus and 80 to 85% Simmental blood.

## **OVERVIEW OF ST PAULS GENETICS HERD**

We first recognised the potential of Black Simmental in 1985 on one of our regular visits to North America. In 1996 we brought in semen and from 2003 to 2005 brought in embryos to hasten our herds development.

For the past 20 years we have taken an aggressive breeding approach as we strive to produce the best. Phenotype, structure, docility and calving ease are paramount.

All St Pauls cattle are parent verified, genomically tested and performance recorded on the world's largest multi-breed global database IGS (International Genetic Solutions). Cattle are tested to be homo polled and tested for homo black in colour.

Performance traits of calving ease, growth, maternal and carcass are selected for utilising the API (All Purpose Index) in the IGS database.

We pursue to multiply our herd with embryo transfer of our own top females. We utilise the best of the semen sires that fit our goals. We continue to import selected embryos to add some extra genetic diversity, to our cow herd.

Our expansion program has allowed us to sell half our herd on five occasions, allowing others to expand their herds. We believe in collaboration, complementarity and the IGS science plus an approach to cattle functionality.

Taking bookings for 2025

Offering

Rural Family Photography | Livestock Photography | Show Photography

Mavstar Photography  
0437130913 | [www.mavstarphotography.com.au](http://www.mavstarphotography.com.au)  
Follow us on Facebook & Instagram

## Thank you

Ruby Canning of Mavstar Photography  
and Eva McNamara of Reset Typesetting.

Doing a catalogue campaign is so much better with great folk  
providing great assistance and super service.

Thank you.



### Accurate text Attractive design

Typesetting is a design element that few  
people notice unless it's done poorly.  
Good typesetting is easy to read.

Phone or email to find out how I can help with your next project.

**Eva McNamara 0491 663 356**

email: [eva.mcnamara@gmail.com](mailto:eva.mcnamara@gmail.com)

website: <https://resettypesetting.com.au>

