



Simmental
AUSTRALIA



The next level in performance

SUMMER 2024

Grand Champion Female & Supreme Exhibit Sydney Royal Show 2024



HOBBS LIVESTOCK VIOLET R2

Junior Champion Bull Sydney Royal Show 2023



HOBBS LIVESTOCK SUDDEN IMPACT S20
SONS SELL IN 2025

\$14,000 Top Priced Bull 2024



HOBBS LIVESTOCK UPROAR U8
SOLD TO WENHAM FAMILY QLD



**HOBBS LIVESTOCK
UNBELIEVABLY TASTY
U103**

Member of the Simmental
team of 3 steers

Interbreed Winning Stan Hill
Trophy Team
Sydney Royal Show 2024



DONOR COW (SHLPRO02)
HOBBS LIVESTOCK VIOLET R2



DONOR COW (SHLPH003)
HOBBS LIVESTOCK HONEY BEE H3



DONOR COW (SHLPP007)
HOBBS LIVESTOCK KEEPSAKE P7

**SEMEN &
EMBRYOS**
FOR SALE

**HOBBS LIVESTOCK
BULL SALE
13th August
2025**



STUART & KYLIE HOBBS
Molong NSW

0400 660 968
hobbslivestock17@gmail.com





C.A.S. Cowcher & Son
Williams, W.A.

WILLANDRA
SIMMENTAL

since 1972

Willandra 37th Annual On-Property Sale February 18th 2025

Free Delivery within
WA on all sale lots
50% rebate on delivery
interstate

35
OFFERING
RISING TWO-YEAR OLD
SIMMENTAL BULLS

PROVEN PEDIGREE,
GUARANTEED PERFORMANCE



Willandra Simmentals genetically evaluated in Single-Step BREEDPLAN
Genomically enhanced EBVs

Charles & Beryl Cowcher
T (08) 9885 6058
ccowcher@westnet.com.au

Peter & Jen Cowcher
T (08) 9885 6014 M 0428 169 630
willandra@westnet.com.au

Find us on facebook



willandrafarming.com.au



Simmental
AUSTRALIA

Summer 2024

OFFICE CONTACTS

Simmental Australia

PO Box 216, Inverell 2360

Hours: 8.00am to 4.00pm

Phone: 02 6933 1214

office@simmental.com.au

Registrar Services

at Genetic Hub

Registrar

Ph: 02 6933 1214

office@genetichub.com.au

Simmental Australia (A.S.B.A. Pty Ltd) ABN 72 000 885 834 reserves the right to reject any article, advertisement, photo or report in its Annual magazine, Website, Facebook or any other Simmental Publication, printed or electronically, if in the opinion of the Board the previously mentioned points are not in keeping with the aims of the Society, or the photos, reports or articles are not of, or do not refer to animals registered with Simmental Australia. While every effort is made to the accuracy of information contained in the publication the Editor & Board of Simmental Australia takes no responsibility for any Errors & Omissions contained within.

Contents

President's Message	5	Beef 2024	45
Executive Officer's Report	5	Royal Brisbane Show 2024 Results	46
Federal, State Councillors	6	Royal Sydney Show 2024 Results	47
Hampton's Find the Perfect Cross to Win Carcase Competition	9	Royal Canberra Show 2024 Results	48
Youth Scholarship Recipient Alana Wade	10-11	Royal Toowoomba Show 2024 Results	48
Youth Scholarship Recipient Erin Goodwin	12-13	Royal Adelaide Show 2024 Results	49
Feedlot Buyers Return for Quality Weaners from Toonagh	14	Royal Perth Show 2024 Results	50
Bandeeka to Bostwana	16-17	Royal Melbourne Show 2024 Results	51
Queensland's Young Auctioneer Matt Pearce	19	Royal Geelong Show 2024 Results	52
Mark and Bronwyn Schottelius Foray Into Beef	20-21	Royal Steer Competition 2024 Results	53
Simmental Mother/Daughter Operation	22-23	IGS EPD Averages	54
Simmental Cross, A Recipe for Success	24-25	Accuracy and Possible Change	54
Vale - Bill Almond 1940 - 2024	26	EPD Ranking	55
Vale - Gerry Hanning 1946 - 2024	28	New Accredited AI Sires	56
Vale - David Weightman 1939 - 2024	29	Top 10 Donor Dams	56
The Future's In Her Hands	30	Top 25 Accredited Sires	57
2023 Beefing Up The Next Generation Camp	32-33	Accounting for a Beef Cattle Stud in Australia	58
Simmental Victoria Branch News	34	Sale Averages 2001-2024	59
Simmental NSW Branch News	36	Total Sale Revenue 2001-2024	59
NSW President Youngest to take the reins	38	Sale Results: A Sneak Peek	60-67
South Australian "Winter Showdown"	39	Members' Directory	69-80
Simmental NSW 2024 Youth Report	40-41	Calendar of Events	81
WSFF Congress Canada	42-43	Advertisers' Index	82

COLOUR CODES

	SIMMENTAL
	NEW SOUTH WALES
	VICTORIA
	QUEENSLAND
	SOUTH AUSTRALIA
	WESTERN AUSTRALIA
	TASMANIA

ASBA wishes to acknowledge those who contributed photos to this magazine.

While all care has been taken, photos may not have been captioned the contributor's name. We thank Emily H Photography, Kent B Ward, Struan Pearce, Branded Ag, our members and those who have tagged us on social media and more. We really appreciate your input.

Our front cover photo was won by Ruby Canning from Mavstar Simmentals of Victoria. Ruby was given a full page ad for her fantastic photo.



PRESIDENT'S REPORT

By Scott York

I would like to welcome you all to our 2024 Simmental Annual. As I sit and recall the big moments for Simmentals in 2024 it reinforces to me how big Australia really is. Our members have had a real mixed bag, from prolonged drought conditions to some of the wettest conditions on record, depending on your location. We all ride the trials and tribulations of being a food producer for this great nation, yet Simmentals have stood up again and gained market share from our competitors. It shows that the 50 plus years of adapting our breed to meet our climatic conditions, while keeping its market acceptability, is really starting to pay dividends to members. With the diversity of markets across our nation it truly shows the flexibility within our breed types to meet specific market needs in specific locations. Our breed types may all be different, but one thing is we are all Simmental, and they are all relevant within our Australian Markets.

2024 saw our members again participate in shows, field days, expos and sales throughout our nation, all in the name of promoting our breed to the rest of the industry. These activities are usually a costly exercise both financially and time-wise and our Board recognises the efforts involved by members to participate in these events, and for this we thank you.

Our Youth Program is pushing forward with a number of states now running a Youth Program and increasing participation and developing our leaders for the future. A highlight for 2024 was the ability to send two Australian youth representatives to Canada for the Youth Program, organised around the World Congress. Alana Wade and Erin

Goodwin represented Simmental Australia with pride, and we congratulate you both on being selected for this once in a lifetime trip. We are looking forward to you sharing your experiences with us and helping educate others with items you learnt on your trip. Simmental Australia would like to thank the offers from Mader Ranch and Lewis Farms for hosting the both representatives because, without their help, these awards would have been out of reach for us.

The Board of directors has had a huge year working behind the scenes to keep our association profitable and ensuring Simmentals are well placed moving forward to take advantage of any market changes or requirements. I would like to thank all our members that volunteer their time to help with the running and organisation of all our Simmental Australia groups, whether it be a State Branch, Youth Group or a Federal Committee - your assistance doesn't go unnoticed, and we couldn't do it without you.

Lastly as you read this report our EO Felicity Reeves will have left her position with us. Felicity will be greatly missed, and her knowledge and work ethic will be very hard to replace. Felicity has been a staff member for nearly 10 years and she has gone above and beyond on many occasions to help with member services and Board requirements. We wish her all the best for her future endeavors and would like to remind her she will always be a part of our Simmental Family.

I would like to wish everyone a safe end to 2024 and wish a prosperous 2025 for all.



EXECUTIVE OFFICER'S REPORT

By Felicity Reeves

As 2024 approaches its end, I find myself reflecting on my nearly ten years representing Simmental Australia. February marks a significant milestone for me, and I am filled with gratitude for the incredible opportunities I've had during this journey.

I will deeply miss the events that allowed me to connect with members across Australia—the shows, anniversaries, and sales. These experiences have been invaluable and have fostered lasting relationships within our community.

With the transition to a comprehensive service through the Genetic Hub, it's time for me to step back and allow this partnership to flourish.

I've been continually impressed by the exceptional quality of cattle you've all bred, showcasing the diversity of the Simmental breed. You've successfully captured all markets, both domestically and internationally—well done!

I want to extend my heartfelt thanks to the Simmental Board members I've worked alongside over the years. Your mentorship has been invaluable, and I truly felt we were united in our mission for the breed. The State Branch committees play a crucial role in promoting Simmental, and I encourage everyone to get involved to sustain this momentum.

To all the members, partners, and families, thank you for welcoming me into your world. I've had the privilege of witnessing your studs and families grow—through engagements, weddings, births, and even moments of loss. The Simmental family is truly inclusive.

Keep breeding what you love, and I hope to see you around the show ring from time to time. Wishing you all the best for the future!

FEDERAL COUNCIL



Scott York
President - Queensland
+61 427 274 410
scyork@bigpond.com



Peter Wenn
Treasurer - Victoria
+61 417 317 830
pinarohills@hotmail.com



Sarah Truran
Senior Vice President - South Australia
+61 411 955 576
savannahsimbrahs@gmail.com



Stuart Moeck
Junior Vice President - New South Wales
+61 419 465 242
vcsimmentals@yahoo.com



Garry Gillett
Councillor - Victoria
+61 412 017 660
garryg@aapt.net.au



Audrey Weightman
Councillor - Western Australia
+61 428 572 058
topweight@westnet.com.au



Elisabeth Skene
Councillor - Queensland
+61 428 717 847
meldonpark@optusnet.com.au



Ashley Ness
Councillor - South Australia
+61 437 081 077
timbercreek@skymesh.com.au



Alana Wade
Councillor - New South Wales
+61 478 151 697
alanawade@outlook.com



Office:
<https://simmental.com.au/contacts/>



Federal:
<https://simmental.com.au/federal-council/>



State Branches:
<https://simmental.com.au/state-branches/>

STATE BRANCHES

NEW SOUTH WALES

Luke Adams
President
0497 267 370
Stuart Hobbs
Vice President
0400 660 968
Stuart Moeck
Treasurer
0419 465 242
Jenny Bullen
Secretary
0429 231 287

QUEENSLAND

Elisabeth Skene
President
07 4668 0361
0428 717 847
Marty Rowlands
Vice President
0439 208 732
Scott York
Treasurer
0427 274 410

SOUTH AUSTRALIA

Matt Nicolle
President
0488 145 433
Renee Mooney
Senior Vice President
0438 011 800
Simmental Office
Secretary/Treasurer
0488 062 287

VICTORIA

Garry Gillett
President
03 5282 3281
0412 017 660
David Brewer
Vice President
0419 600 527
Fiona Koch
Secretary
0437 366 899
Vanessa Wenn
Treasurer
0407 122 881

WESTERN AUSTRALIA

Kevin Hard
President
0457 285 256
Peter Cowcher
Vice President
08 9885 6058
0428 169 630
Jennifer May
Secretary/Treasurer
08 9753 1884
0419 956 667

TASMANIA

Phillip Partridge
President
0400 636 836
Scott Frankcombe
Vice President
0408 129 779
Chelsea Rayner
Secretary/Treasurer
0447 426 629



RUBY'S QUADRANT 210K

*Bonnydale acquired the Australian semen rights to the US\$80,000 sire.
Bonnydale will have calves on the ground in January 2025. Continuing the legacy
of securing elite genetics to advance your Black Simmental program.*

	CE	BW	WW	YW	Milk	MCE	MWWT	STAY	DOC	CW	REA	FAT	MARB	YG		AAPI	ATI	API	TI
EPD	18.3	-0.8	105.5	161.7	26.2	9.5	79.0	17.0	21.9	50.2	1.25	-0.041	0.49	-0.33	Index	102.58	108.64	177.85	108.49
Acc	0.45	0.50	0.51	0.52	0.25	0.29	0.34	0.36	0.49	0.45	0.43	0.39	0.44	0.36	%RK	1	3	1	1
%RK	2	10	1	1	15	5	1	30	1	3	3	15	4	75					

Testimonial

"Thank you for the kind email, but the pleasure was all ours. Your program is magnificent. Your hard work, incredible scenery, quality genetic selection, remarkable husbandry and more, make Bonnydale one of the most impactful operations I have ever witnessed. It is a pinnacle herd in my personal and professional opinion. And my father has talked about the operation ever since"

Luke Bowman, Director of SimGenetic Development, American Simmental Association.

2025 BULL SALES PROGRAM

March - Bridgetown WA
August - Rockhampton QLD
September - Roma QLD

2025 FEMALE SALE

In February 2025, for the first time ever,
Bonnydale will offer the opportunity to
purchase elite females via an on-line offering

Enquiries: Bonnydale WA Rob Introvigne 0427 644 082
Bonnydale QLD Jake Berghofer 0418 649 666



HAMPTON'S FIND THE PERFECT CROSS TO WIN CARCASE COMPETITION

By Felicity Reeves

Based in the Atherton Tablelands of northern Queensland, David and Glenyse Hampton have found the perfect cross with progeny from their Simmental/black Limousin cows crossed with a black Simmental/black Limousin bull, took out the 2023 North Queensland Best Beef Carcase Competition (NQBCC) conducted by Rocky Creek Abattoir.

David and Glenyse run 100 – 120 breeders on 300 acres of peanut and creeping vicia country, complimented by very good grasses.

They have been cattle breeding for 35 years and always choose good quality bulls, with temperament high on the list. The preference for Black Simmentals stems from a market need for black coats and polledness with ticks being a problem for some of the softer breeds.

David says crossbreeding with Simmental means their progeny grow fast and have great fat cover.

This was the first time the Hamptons had entered the carcass competition. Organisers invited a MSA judge from Armidale to judge. As they'd been supplying steers and heifers to the butcher for some time, David and Glenyse thought that as they had a consistent product they could be in with a chance and were delighted to come away with winning Best Carcass and Best in Class out of 96 entries.



The competition was revamped by the Byrnes family in 2022, now a three-generation business, to promote the quality of the beef available in the north, available direct to customers. While MSA grading is not available in the northern abattoirs, consumers are benefiting from the high quality of beef the north is obviously producing.

While they didn't enter the competition this year, they did go to the presentation day and were interested to see that while their group scored 257.21 points last year, this year's winners scored 254.43 points.

David believes that female fertility is a very important part of his operation. With bulls out year-round, if a female doesn't calve every 10 months, they're out. Weaning weights must be 300kg at 8-9 months and are yard weaned on hay.



Steers for the Carcase Competition.



Rocky Creek Carcase Competition 2023 winning pen of steers.

They only need 2-3 days of weaning due to great temperament. Weaners are trained to go through the yards for food and water with their dams on the other side of the fence.

He recently sold heifers to a buyer from Mackay who came to look at bulls but the temperament of the heifers in the paddock so impressed the buyer that he bought them instead.

While they sell their steers and some heifers to the butchers, he also has a market for PTIC heifers.

Temperament is what convinced him to buy his first Simmental from the Lavarta stud. He walked up and could put his arms around the bull in the paddock. He says that Mervyn obviously knew and only bred good cattle. He had also bought a red Simmental from Mervyn and now has a young bull from that one that is now going over some Angus heifers he purchased. He's looking forward to seeing their progeny.

David believes that the growth rate and yield of the Simmental makes a more saleable product than the rest.



David Hampton with Lavarta Final Verdict - the beginning of it all.



David Hampton loading steers for Carcase Competition.

NORTH QLD BEST BEEF CARCASE COMPETITION

EVENT OVERVIEW:

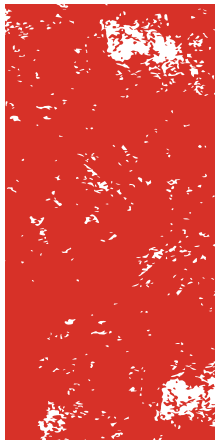
- The North QLD Best Beef Carcase Competition was held at Byrnes Meats' Rocky Creek Abattoir on the Atherton Tablelands.
- Ran by Shannon and Cailan Byrnes (Plant Manager – Rocky Creek Abattoir)

VENUE:

- Rocky Creek Abattoir is a boutique domestic facility processing locally sourced, grass-fed beef for its own butcher shops and other local butcheries.
- Atherton Tablelands' grass-fed beef is renowned for its quality, comparable to Tasmania's premium grass-fed beef.

PURPOSE:

- The event emphasised the importance of a local supply chain and aimed to strengthen connections between butchers and producers.
- It provided an opportunity to enhance understanding and collaboration within the local beef industry, ensuring quality and sustainability.



YOUTH SCHOLARSHIP RECIPIENT ALANA WADE

New South Wales Alana Wade was selected as one of the recipients of the World Simmental Fleckvieh Federation Congress Scholarship.

Story by Alana Wade

In May 2024, I was fortunate to have received a scholarship put forward by Simmental Australia to attend the Young Canadian Simmental National Classic and the World Simmental Fleckvieh Federation Congress in Olds, Canada In July.

Alana is currently operating her own bovine reproduction business 'Elite Genetics' and has a strong passion for simmental cattle building her breeding operation 'Rafferty Pastoral Co' alongside her partner Kain Rafferty in Gulgong, NSW.

My journey in Canada commenced at Lewis Farms, Spruce Grove Alberta. I was privileged to spend two weeks with Kyle & Alexis Lewis and their family spending time absorbing all I could about their simmental and angus operation.





Canada and Australia. We connected with delegates from across the globe and met with fellow Australian Simmental Breeders in support of the Friends of Canadian Simmental Auction.

At the end of my time at the National Classic, I further continued my trip touring operations across Alberta, Saskatchewan and British Columbia. I toured farms including Rancier Farms, Mader Ranches, Black Gold Simmentals, Sunny Valley Simmentals, KT Ranches and more. I'm extremely grateful for the hospitality and kindness I was given whilst touring these farms. My time was spent viewing cow herds, donors, walking and semen sires. I was privileged to view bulls of which we have genetics within our own herd. My tour concluded back in Calgary after attending the Canadian Junior National Heifer Show.

The wisdom and knowledge I gained from this opportunity has been invaluable!

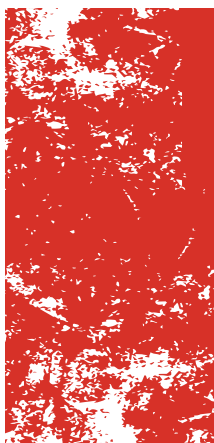
I was given an opportunity to meet with so many industry experts and learn from simmental breeders who are so passionate about the breed and the beef industry. Seeing how prosperous the simmental breed is within the Canadian beef industry has been incredible, from the full blood to cross breeding programs, the simmental breed plays a big role within the Canadian Beef Industry. Thank you to Simmental Australia, the World Simmental Fleckvieh Federation and Canadian Simmental for offering this incredible opportunity to Simmental Youth and providing me with this once in a lifetime experience.

After a little bit of jet lag! My first week with Lewis Farms, I gained insight into the value in growing and harvesting silage for the winter months. Seeing the difference between how operations are done in Canada to Australia, it was eye opening to see the importance for operations to work through summer producing feed to support their own livestock through the extremes of winter. I spent time assisting with their Summer AI program and drafting stock into joining groups for the season on pasture.

On the 31st July 2024, we travelled to Olds for the National Classic and World Congress.

We spent time preparing animals for exhibition at the classic and competed in youth development discussions, events, judging and showmanship competitions. It was a fantastic opportunity to explore how the Young Canadian Simmental Association runs such a prosperous youth event and return home with some ideas to include within our youth programs within Australia. Whilst in Olds, I caught up with Erin Goodwin (QLD scholarship recipient) where we attended the World Simmental Sale and the World Congress Banquet. The sale saw an opportunity to observe lots of quality cattle on offer and view genetics that are being utilised within





YOUTH SCHOLARSHIP RECIPIENT **ERIN GOODWIN**

South Australian Erin Goodwin was selected as one of the recipients of the World Simmental Fleckvieh Federation Congress Scholarship.

Story by Erin Goodwin

A ‘trip of a lifetime’ is the only way I describe this scholarship. I am extremely grateful that I received this opportunity to represent Simmentals Australia and their youth. As a commercial breeder that is new to the stud breeding game this trip was a wonderful opportunity to expand my overall knowledge of Simmental on a global scale, view high-quality genetics and gain an understanding of different breeding practices.

I was generously hosted by Ryley and Jill Mader and family at the “Mader Ranch” at Carstairs, which is situated 48 km north of Calgary, Alberta. Thanks to Ryley and Jill I was able to obtain an insight into their poll focused breeding program and the obstacles they face as producers due to the extreme weather conditions. I enjoyed my experience working on their stud and helping with the preparations for the farm tour that was a part of the World Simmental – Fleckvieh Federation Congress. A huge thank you must go to the Mader families for making me feel welcome and for their exceptional hospitality!

During my stay, I found it interesting that AI and embryo transfer programs are used extensively to build and enhance herd genetics. The Mader’s believe by reproducing multiple daughters and sons from their donor cows and breeding leading sires, they can offer consistency to their



customers. Mader Ranch have a strong focus on breeding from proven fountain females (“cow families”). Their success with this coupled with careful sire selection has allowed them to hold their own annual bull sale offering around 100 bulls at 12 – 14 months of age. As well as their own heifer sale in the fall where they offer PTIC black and red Simmental females, heifer calves and embryo packages.

This scholarship made it possible for me to attend and compete at the National Young Canadian Simmental Show. I got to see what Canadian Simmental breeders have to offer as 220 head from across Alberta went head-to-head in the showring. I was extremely impressed with the high quality of Simmental cattle on show over the few days. Along with 190 other young Simmental breeders we competed in multiple events such as team grooming, judging, showmanship, and a cattlemen quiz. I found the team event particularly rewarding as I got to team up with an experienced competitor in team grooming and managed to pick up a few new tips.

I attended the World Congress Banquet which coincided with the Friend of the Canadian Simmentals Foundation auction who raising a whopping \$210, 000 CAD. Funds raised go toward providing youth with scholarship opportunities to further expand their knowledge, love, and passion for the industry. It was impressive to see the amount of money that is invested in the Simmental youth and the faith they have in the breed and youth coming through.

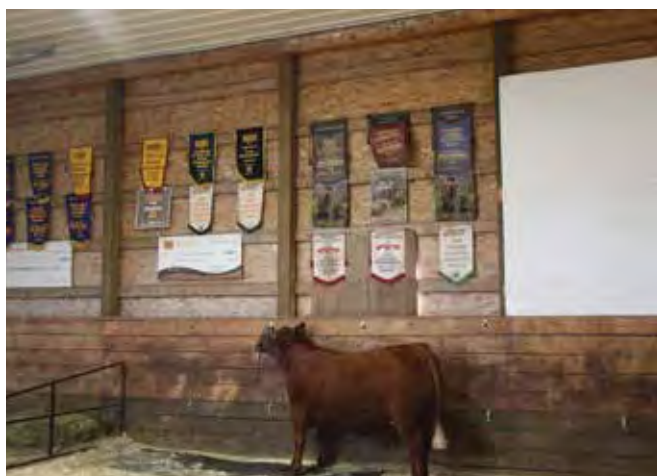
The highlight of my trip was attending the World Simmental sale hosted by Bohrsen Marketing. Here I got to witness the Canadian way of auctioneering which is vastly different to Australia. All cattle for sale are ranked in terms of quality and sold in their ranked order. Lots considered to be the better lots are sold off first followed by the rest.

Over the four-day event I got to meet a lot of amazing people who are now lifelong friends. It was great being surround with like-minded people who share the same love for the breed, craft and Agri industry. I enjoyed hearing from breeders firsthand about the challenges they face in the agriculture sector from climate to running costs. Our conversations allowed me to draw comparison between Canada and Australia and we could both gain an understanding of factors that influence each-others breeding and business operations. Timing and planning are key to managing any business, however with the added pressure

of extreme weather conditions in Canada, getting this right is vital. Breeding programs must be on track, hay must be grown, harvested, and stored away for cold snowy winters.

When I applied for this scholarship, I never thought I would be successful. I must sincerely thank the Simmentals Australia for this opportunity to grow my industry and breed knowledge, networking opportunities and choosing me to represent the society. This trip would also not have been possible without the World Simmental- Fleckvieh Federation and Canadian Simmentals Association for organizing and hosting such amazing events. Thank you!

My message to any youth reading this: this scholarship is an amazing opportunity to gain experience and be part of a breed and community with a strong future. Apply! With an opportunity like this you never know where it might lead.



FEEDLOT BUYERS RETURN FOR QUALITY WEANERS FROM TOONAGH

By Felicity Reeves

Allan Chaplin is a great believer in the weight gain advantage of crossing traditional Simmental bulls with his Shorthorn cross and Angus cross X females. Allan says he's been running this production system for about 15 years with 9-10 months weaners giving him an extra 30-40kgs.

Based at Tintinara in the upper SE of South Australia, Allan runs 205 cow and calf units on 3000 acres and sells 40 units at a time to feedlots including Mildura, supplying supermarket chains. Some also go on to grassfed operations.

The weaners sell through the Naracoorte store sales where buyers remember his trading name of Toonagh and know the quality he sends in. He's been fortunate enough to have received \$4/kg for 370kg steers and \$3.80/kg for 360kg heifers over time.

Allan has been in this area for about 32 years and was a little skeptical when Matt Nicolle approached him to try Simmentals but has ended up with the extra kilos at weaning and says that's where the money's at.

Allan chooses lower birth weight bulls, more recently from Lakeside at Robe and BT Simmentals at Keith. The calves are reasonably small when born and go like steam later on. Milk in his females is highly sought after. While there's not enough room to retain heifers, Allan buys in Hereford/Simmental cross and Shorthorn/Simmental cross females with the Euro cross giving him a very good calf, robust and reasonably muscly.

He's able to run bulls all the time due to being in a bit warmer area with prolonged seasons with plenty of feed where Allan grows lucerne and Veldt grass. The Veldt has a red coloured head with all the seed on it that cattle oil up quickly and put weight on. Rainfall is normally 480-500mm a year and this is the first year Allan says they are behind in the rainfall, having to buy in hay. A first in 32 years.

He says he's certainly happy with the Simmies, they've got the extra weight and buyers keep coming back for his.



LARALEIGH SIMMENTALS

We first saw Dixie Chick 7K when we visited La Batte Simmentals in 2023 and she impressed. We followed up & purchased her at the Simmsational Sale. She calved down at La Batte's and had a beautiful Polled heifer to Jesse James 49J. 7K is a stylish Elevation daughter going back to the Great Grandsire Anchor T Legend. 7K is a moderate framed dark cherry red, stylish female setting up a good udder. First lady is a carbon copy of her dam. 7K & First Lady are in a flush program at Bow Valley Genetics to produce embryos for the Australian market. Joined to our battery of Fullblood power sires, conventional & IVF embryos available in 2025



IPU 376E MS DIXIE CHICK 7K
DAM: ANCHOR D MACS DIXIE CHICK 376E
SIRE: BLACK GOLD ELEVATION 20E



FIRST LADY @ 8 MONTHS

GGJ 7K MS FIRST LADY 1M (P)
DAM: IPU 376E MS DIXIE CHICK 7K
SIRE: KSL PLD JESSE JAMES 49J



EMBRYOS AVAILABLE IN 2025 BY



ANCHOR D CARTEL 459K
POLLED FULL BLOOD

SIRE: BLL CREED 950G - 1328736
DAM: ANCHOR DARLA 459D
IS IN THE TOP 10 BULLS EVER PRODUCED BY ANCHOR D. POLLED, COLOURED RIGHT, AND LONG LIKE A FREIGHT TRAIN, HE CHECKS ALL OUR BOXES WITH AN IMPRESSIVE LIST OF DONOR COWS BACKING UP HIS MATERNAL GENETICS. A LIMITED AMOUNT OF SEMEN HAS BEEN SOLD IN CANADA @ \$1,200 STRAW & A HEIFER BY HIM SOLD AT THE WORLD SIMMENTAL SALE FOR \$20,000.



FGAF ELECTRIC AVENUE 140E
FULLBLOOD

SIRE: FGAF FRENCH ATTACK 010C
DAM: GIBBONS DORALEE
QUICKLY GAINING NOTERTIARY FOR BEING A BIG-TIME HERD BULL. ELECTRIC AVENUE HAS GREAT LENGTH OF BODY, STRONG MUSCLING, BIG BARREL, DARK RED COLOR PATTERN, STRONG FOOT ALONG WITH STRUCTURAL CORRECTNESS. COMBINE THAT WITH BEING A POLLED SON OF THE GREAT BREEDING BULL FRENCH ATTACK AND CROSSED WITH AN IMPRESSIVE MATERNAL LINAGE, THIS IS A BULL TO GET EXCITED ABOUT



ANCHOR D GARREN'S KRUSH 524K
POLLED FULLBLOOD

SIRE: BLL CREED 950G
DAM: ANCHOR D GARREN'S SHENZI 524G
SOLD TTD DOUBLE BAR D SIMMENTALS FOR \$100,000 AT THE ANCHOR D TREASURE SALE 2022.



SUNNY VALLEY FREEDOM 22F
POLLED FULLBLOOD

SIRE: STARWEST POL BLUEPRINT
DAM: SUNNY VALLEY TRINENTY 53Z
FREEDOM IS A BIG TIME HERDSIRE THAT IS JUST GETTING STARTED. HE CARRIES A PROVEN PEDIGREE AS HE IS PART OF A TRIO OF FULL BROTHERS THAT HAVE BEEN THE LEADOFF FULLBLOOD BULLS AT SUNNY VALLEY IN CONSECUTIVE YEARS AND AVERAGED \$35,667.



CONTACT: GARRY GILLET
MOB: 0412 017 660
Email: info@laraleigh.com.au



FGAF RAIDO ACTIVE 030E
POLLED FULLBLOOD

SIRE: FGAF GUERRERO 810Y
DAM: STARWEST ANGEL

'RADIOACTIVE' HAS BEEN USED AS A HEIFER BULL AT ANCHOR D FOR SEVERAL YEARS. HIS OFFSPRING ARE LOW MAINTENANCE CATTLE, VERY EASY KEEPING CATTLE THAT POSSESS GREAT FOOT & LEG STRUCTURE, NICE HAIR, AND TREMENDOUS DISPOSITIONS. HIS DAUGHTERS HAVE FLAWLESS UDDERS AND HIS SONS SEEM TO HAVE MORE THAN ENOUGH TESTICULAR DEVELOPMENT.

BANDEEKA TO BOTSWANA

By Felicity Reeves



Mr T.

If you ask anyone in the breed if they've heard of Loreen and Tony Kitchen, you'd get a resounding "yes and they're great people".

Tony and Loreen started the Bandeeka Stud near the township of Boyanup in Western Australia in the early 1980s with Loreen growing up in the local area on her family's dairy.

Here is where Loreen developed her knowledge of cattle breeding. In particular, the value of the strong maternal values in a breeding herd. Here grandfather gave each of the grandchildren 50 pounds and Loreen

put her money towards her first Simmental heifer.

Over the years females were added from local Western Australian herds with Tenderloin, Yarloop and Ranchlands to name a few. These females carried the old traditional Simmental genetics like Scottish Herod, Scottish Prinz and Pinjarra Excelsior which set up the herd with fantastic maternal attributes as well as the beautiful muscle deviation the sires carried.

That has set the scene for this year's foray into exporting a load of heifers into Botswana.

While the Kitchens have been regularly exporting to China, this new opportunity arose when they were approached at Perth Royal by three representatives from the Botswanian Government. They liked what they saw and offered to buy one particular heifer and took the Kitchen's details.

Two weeks later, a contingent of seven people visited Bandeeka. A Solicitor, three people choosing the cattle, a banker and another to talk prices and a vet. All in all, they spent two hours looking at the cattle. They were setting up a complex in Botswana to house the cattle to come from WA and QLD.

They ended up buying the two-year old progeny of Loreen's stud bulls and three heifers from the one drop. The show heifer from Perth was still sort after but was too far along in calf to be safely exported. They also took four of Loreen's Red Angus herd.

The cattle spent a month in quarantine for vaccinations and passed all criteria.

They were then flown in pine crates, first class, Loreen calls it, to Botswana on an eight-hour flight. Government officials were on hand to unload a total of 93 cattle and 140 goats all on one plane.

The Kitchen's get regular updates of their cattle from the official who organised it all.

The complex in Botswana has 24/7 surveillance by the army to keep them secure with their next buying trip intended to be Brazil.

Loreen says that about 9 calves have been born from the contingent with 6 being Bandeekas.



Click on the QR codes to watch
the loading and unloading of the
plane.



Being loaded onto the plane. Safely landed in Botswana.



Registered | DNA tested

- ✓ Semen & morphology tested
- ✓ Herd Bulls
- ✓ Performance that build resilience in your herd



Adam & Laura Humphrey

☎ 0448 362 911

📍 Merida Station, Jericho QLD

✉ admin@3hg.com.au

🌐 www.3hg.com.au

📘 [www.fb.com/3hgsimbrah](https://www.facebook.com/3hgsimbrah)



TENNYSONVALE



ILLABO NSW



Tennysonvale Unee (P)



Tennysonvale Ullly (P)



Tennysonvale Ustripe (P)



Tennysonvale Udy (P)

40 FEMALES - 30 BULLS

1PM FRIDAY 30 MAY 2025

ANNUAL SALE

On farm at "Ivanhoe" ILLABO NSW 2590

Nathan Baldry - 0450 473 109 ~ Carl Baldry - 0405 848 224 ~ Ian Baldry - 0427 931 943

PERFORMANCE, PROFITABILITY & LONGEVITY
www.tennysonvale.com.au ~ www.facebook.com/tennysonvale

QUEENSLAND'S YOUNG AUCTIONEER MATT PEARCE

By Felicity Reeves

Queensland's top Young Auctioneer Matt Pearce is also a Simmental breeder.

Emerald GDL stock agent, Matthew Pearce has always liked Simmentals and has recently started the Jamac Simmental Stud with partner Kate Parker.

Originally from Gympie and Kilkivan, Matthew and Kate purchased 35 acres at Emerald late last year and lease another 330 acres from Kate's Grandparents at Biloela which they're very grateful for.

Matthew wanted to breed good cattle for himself outside of work and to maybe eventually sell to some of those clients. In the hope that they go out and do a good job for them.

They currently run 8 registered heifers and cows and some very handy unregistered females commercially.

Kate is always the first to pick what to buy at upcoming sales. They have similar likes, Kate picks then Matthew picks and then discuss then normally not much difference is what they've picked.

Matthew started agent work at Sullivan's at Gympie for a year and was then offered a job at Rocky by Peter Daniel from 2020 to 2022. At the end of 2022 they bought Maguire's Real Estate and Livestock out of Emerald and asked him to move out there to run the business.

He was crowned the 2024 ALPA Queensland Young Auctioneers Competition winner at the Ekka and will now head to Sydney Royal in 2025 to compete for Queensland.

When asked if he thought he had a chance at the trophy, he said he tried not to think about it. Practice was the weekly sales at Emerald and was conscious not to over practice. He says he sold the best he ever had and came away with the trophy.



Matt Pearce and Kate Parker.

Describing his type of Simmental, he loves the dark red traditional, good goggles around the eyes with plenty of length. Of the registered females they run, six are dark red, and two are light red. They don't have any blondes at the moment, but he's been assured he needs to get some.

Their females have come from Clay Gully, Wormbete and KBV Simmentals. Most recently they bought one from the Shiiloh Dispersal. Kate did the bidding at Shiiloh.

Looking back five years, Matthew says he couldn't envision where he would be now. He would have been 17 and doing his Boiler Maker Apprenticeship, wanted to get a trade under his belt, but couldn't see himself doing the same thing. He had been working at the saleyards at Gympie through school and when said he wanted to be an agent, they said they'd be happy to give him a go. He said there's always room for an agent, so he'll never be jobless.



MARK AND BRONWYN SCHOTTELIUS FORAY INTO BEEF

By Felicity Reeves

Mark and Bronwyn Schottelius of Mackenzie River Dingo Qld were interviewed on the Beef Australia podcast earlier this year as they had a noticeably different pen of steers in for the Beef commercial classes of bullocks.

Noticeably, as they had white faces.

The Schottelius family run a Braford/Simmental cross herd using white faced Simmental bulls in the Mackenzie River region of north Queensland, 80kms from Dingo and 60kms from Middelmount.

Mark and Bronwyn's daughter, Samantha Moger, started a Braford stud from breeders which were remnants of Mark's fathers Braford Stud back in the 60s, 70s and 80s.

In the late 90s the family had their cattle on agistment, keeping them going between times of having their own properties, down near Baralaba where they saw some really nice Simmentals and that's when they bought their first bulls to put over their breeders.

When they bought their current property off Bronwyn's parents, half the herd was red based and they bought red Simbrahs to put over those. And then bought the true Simmental with white faces to go over the Braford's.

Their bulls have come from Matt Kirk at Ticoba and Vaughan Campagnolo's Savannah Simmentals. Most recently, they've purchased two bulls from Jack and Tara Dumba's Summa Simmentals at Middelmount. These are

running with Braford Simmental cross heifers and have some beautiful calves.

Entering the Beef Commercial Comp was Samantha's idea to showcase some whitefaces. They don't usually have bullocks stay on as the usually truck out three and four decks of feeders steers to feedlots at 450 to 520kgs.

This was their first foray into competition with a pen of 10 and while no ribbons for them this time, they intend to enter more carcase comps in future and put that data to good use.

Bronwyn mentioned in the podcast that they semen test their bulls every year before putting them out to breed with motility and morphology testing. This has improved their conception rates to 98-99%. Any issues with bulls that you can't see are found before joining rather than waiting for pretesting. The time and expense of having to get a vet in, is definitely worth the effort with those results.





The whiteface pen of 10 at Beef 2024.



Beef competition entries.




LOGIE SIMMENTALS
NOWENDOC

Enquiries and inspections always welcome

Graham 0400 351 905 | Jenny 0429 231 287
jennybullen@gmail.com

 Logie simmentals GJB



SIMMENTAL MOTHER/DAUGHTER OPERATION

Francie and Vanessa Hooper



Vanessa Hooper returned home to Tintinara 38 years ago where she assisted her mum Francie to run a 1000 ha family farm. Stock included 50 cows and 1000 merino sheep.

Moving forward till today, they have 2400ha, 300 cattle and 2100 merino sheep.

In 2016 they purchased their first Simmental bull and have continued to buy in South Australia since.

Out of the 300 cattle, 200 are now Simmentals including self-replacing heifers which are joined to an Angus bull swapping to a Simmental bull for their second calf.

Vanessa loves the traditional Simmental and has purchased from Matt Nicolle, Waterfront, Lakeside and more recently Mt Mooney run by Quentin and Renee Mooney.

She has measured weight gain from different breeds and the Simmentals vealer was out in front by 40 kgs at nine months of age. In comparison to other breeds the Simmental vealer always weighs so much better, Vanessa said.

They are yard weaned for three to four days on hay and are very settled when reaching the paddock. Regardless of their age they wean remarkably well.



Even in the very tough season of 2024, weaned at six months, the weight gain is still very strong. In the past the vealers have had gains of 1.23kg per day on pasture.

Being a mother/daughter operation temperament is very important, from the bull purchase through to the selection of females. Quentin and Renee from Mt Mooney have assisted in all aspects of bull selection. By their on-farm visits inspecting offspring the genetic direction can be fine-tuned.



Vanessa has repeat buyers for her cow/calf unit, cast for age cows, and vealers. Which are ten months old and up to 380 kgs, in a normal year. Feedlotters are a consistent client. Vanessa is aware that other breeds have been successful in their marketing and hopes the Simmental breed can do the same.



Performance

Carcase

Softness

BARANA

“Breeding Cattle for the Commercially Minded since 1980”

25TH ANNUAL ON PROPERTY BULL SALE

Friday July 4, 2025 | 1pm

‘Barana’ Coolah NSW &
livestreamed via  AuctionsPlus

30 SIMMENTAL BULLS

10 SIMMENTAL HEIFERS

15 ANGUS BULLS





www.baranasimmentals.com

SIMMENTAL CROSS, A RECIPE FOR SUCCESS

By Linda Mantova, ACM

Simmental-cross cattle are doing well in various beef competitions across the country, with the advantages of hybrid vigour boosting performance and profitability and proving to be a recipe for success.

Simmental Australia president, Scott York, said the recent success of Simmental-cross cattle in carcase competitions and feedback trials further reinforced that Simmentals were renowned for increasing both carcase weight and carcase yield.

“The use of Simmental genetics in a crossbreeding program with both Tropical and British types will have their progeny reach market carcase weights at a younger age, with increased yield meaning more saleable meat,” Mr York said.

“This means the farmer can run more numbers and processors have more meat to sell, which is a win/win for the industry,” he said.

Mr York said, as a society, Simmental Australia was really focusing on how to add value for the day-to-day producer.

“Winning competitions is nice but it means nothing if you’re not industry relevant,” he said.

“There is a lot involved before you even get a calf on the ground, let alone one to the abattoir. We want to be known for our all-round performance, not just excel in one trait.”

Mr York said Simmentals added growth, carcase and fertility to a herd. He pointed out the advantages of hybrid vigour included: More saleable weight - 10 to 15 per cent or 25 to 60kg; trimmer carcasses - less waste fat; more muscle; higher yields of



Jack Thomas, TFI with Lancaster Simmentals' Lizzy and Prue Cartledge, who exhibited the grand champion carcase at 2023 Royal Adelaide Show. Picture supplied.

saleable beef; more productive first-cross females; and earlier turnoff at desired market weight.

One example of the success the Simmental breed has tasted in recent times is the Cartledge family of Lancaster Simmentals, Field, South Australia, who won grand champion carcase in the led steer competition at last year's Royal Adelaide Show, with a crossbred export weight steer.

The winning carcase was a Black Simmental-Angus export weight steer, exhibited by the family made up of

Henry, Tim, Lise, Lizzy, Harry and Duncan.

Prue Cartledge said they had been entering the competition for the past eight years, including winning the eating quality competition in 2021, but this was their most successful result.

The 614kg steer scored 88.01 points - out of a possible 100 - on hook. On-hoof, it scanned an eye muscle area of 117 square centimetres, P8 fat of 13 millimetres and rib fat of 12mm. It had a hot carcase weight of 345.4kg, a lean meat yield of 16.95 out of



Virbac Challenge winner Allan Walker, Bellbird Park, Wallabadah, NSW, with his pen of 26 Simmental cross steers, which was judged the champion pen of the sale and sold for the sale top price of \$1410. Picture by Simon Chamberlain.



David and Tara Brewer, Brewer Beef, Tallangatta Valley.

20, a marbling score of 590, a Meat Standards Australia index of 65.70 and MSA score of 41.06/50, as well as a marketing specifications score of 30/30.

Ms Cartledge said they did genomic testing for all their cattle, using that information, along with expected

progeny differences, to select good quality cattle, before using visual assessments to select their team.

In another success story for the Simmental breed, the champion purebred steer on-hook went to Glental Simmentals, Mallala, for its reserve champion lightweight domestic steer on-hook, which then won champion heavy domestic steer on-hook. The steer had a liveweight of 437kg, 100EMA, a 9mm rib and P8 fat, and a hot carcass weight of 259kg. It's MSA index was 63.06, with an MSA score

of 39.41, a marketing specifications score of 27, a LMY of 20 and a total score of 86.41/100.

Another big fan of Simmental-cross cattle is the Walker family of Bellbird Park, Wallabadah, NSW, and King Island, Tasmania.

Running a strictly commercial herd, Allan and Belinda Walker and two sons, James and Andrew, have been using Simmentals in their herd for the past eight years, and in March took out the grand and reserve champion pen at the Tamworth Virbac Challenge Weaner Sale, with their Simmental-cross steers.

Mr Walker said he used Simmental bulls in his herd of 200 European and British breed-cross cows from Mala-Daki, Loomberah and the SA stud, Woonallee.

Entering a team of Black Simmental and two SimAngus teams in this year's NSW Beef Spectacular Feedback Trial, Victorian producers David and Tara Brewer, Brewer Beef, Tallangatta Valley, were also happy with how their teams performed.

David Brewer said the Feedback Trial was quite comprehensive, allowing the stud to make comparisons between its various groups of cattle. "It gives us a good indication of how our bloodlines are performing," said Mr Brewer, who has been a long-time trial participant.

WORLD WIDE SIRES

Simmental

7SM149

WHF POINT PROVEN

NEW
SIRES
COMING
SOON



NEW

7SM140

IRS DUTTON



wwwsaustralia.com

Dale Edwards 0427806672 • Dave Gibson 0427571183 • Annie Edwards 0490196639

Product of the USA





VALE BILL ALMOND

10-06-1940 - 24-03-2024

Bill's foray into agriculture began in the NSW Hunter Valley. From a young age he demonstrated an innate passion for farming, a love of which was deeply rooted in the pastures of his upbringing.

As a young man, Bill's commitment and skill were acknowledged by the Young Farmers Association, which awarded him a six-month study tour in New Zealand. Upon his return, Bill began his career at the Department of Agriculture, specializing as a cattle inseminator. With the arrival of Simmentals in Australia in 1972, Bill was among the pioneering individuals to adopt the breed.

Founding his stud, Kensileyre, and relocating to Wagga Wagga in 1992, he was a passionate participant in the Simmental Association at both the State and Federal levels for over three decades, taking on numerous roles including State and Federal councillor, treasurer, president and delegate to the World Simmental Federation, where he served as the 2nd Vice President in recognition of his substantial contributions, particularly to the World Congress held in Melbourne 2008.

Bill was honoured with the esteemed Golden Book award by the World Federation.

Bill was also deeply committed to the youth development programme, offering his support to young participants, helping them to develop their skills in preparation, handling and showcasing cattle, many of whom had little to no background in farming. As an example of his skills, one

mentee went on to establish his own stud, and rose to the role of president of Simmental Australia.

Bill's dedication to developing the Simmental breed in Australia and internationally was driven by his endearing love of the breed. He was awarded life membership of Simmental Australia in 2012.

After a long illness, it became time to farewell a dear friend and colleague.

Bill leaves a fine legacy for others to follow to continue to promote the breed.



Bill Almond receiving his Golden Book Award from Canadian Simmental CEO, Bruce Holmquist in 2008.





Traditional, Black and Red Simmentals

2024 BULL SALE RESULTS



CASA TORO TOP GEAR T44 – \$35,000
Streeter Family, Taroom QLD



CASA TORO TRADIE T71 – \$32,000
Yacamunda Investments, Mt Coolon QLD

TOTAL 47 BULLS SOLD • TOP \$35,000 • AVERAGE \$12,787

33 Traditional Bulls averaged \$14,454

7 Red Simmentals averaged \$9,714

7 Black Simmentals averaged \$8,000



Introducing **APLX COACH 37J**

First calves hit the ground Spring 2024
and are showing great style and balance.

Scott & Claire York • 0427 274 410 or scyork@bigpond.com

www.casatoro.com.au

VALE GERRY HANNING

21-03-1946 - 02-08-2024



Gerry loved his Simmentals and would drive two hours to the farm.

Gerry was born in 1946 in Groningen in the Netherlands and came out to Australia with his parents after the war and settled at Dorrigo, northern NSW.

His love of cattle began back then, when having to collect milk from the local dairies for his mother.

Following a family accident, the family moved to Cronulla while Gerry went to school.

Gerry had a property near Crookwell for 20-30 years where he ran 30 head of Simmentals at any one time under the Meadow Park prefix. This was a two-and-a-half hour trip each visit to the farm.

He loved travelling to South Australia each year to attend the sales.

Gerry passed away in August this year and is survived by his wife Sandra, two daughters and two grandchildren.

LNA
LIVESTOCK

Productivity ✓ *Performance* ✓ *Profitability* ✓

Luke & Natasha Adams, Boorowa NSW

☎ *0497 267 370 or 0400 834 619*

VALE

DAVID WEIGHTMAN

10-07-1939 - 21-10-2024



“Dave’s the name Beef’s the game” A classic one liner used to greet people from all walks of life be it a fellow farmer or a synergy employee simply checking power lines.

David passed away peacefully on 21/10/2024 with family by his side.

He will be remembered as a gentleman and a great cattleman and he was a one-eyed Simmental breeder from the very start in Australia, travelling across the country to buy one of the first Simmental bulls to be offered in Australia.

David’s passion for Simmental cattle took him around the globe. Some of David and Audrey’s noteworthy travels included trips to Mongolia, China, Canada (three times!), Denmark, Sweden, Ireland, Montana, Texas, Argentina, Peru, Bolivia, Namibia, New Zealand, and South Africa.

David made many life-long friends through the Simmental breed. He will be sorely missed but never forgotten. His legacy will live on at Topweight.

Taking bookings for 2025

Offering
Rural Family Photography | Livestock Photography | Show Photography

Mavstar Photography
0437130913 | www.mavstarphotography.com.au
Follow us on Facebook & Instagram

THE FUTURE'S IN HER HANDS

By Vanessa Wenn

May we introduce a young, enthusiastic Victorian Junior member – Sienna Grylls from Tynong. Sienna's passion and appreciation for the Simmental breed was noticed when she was lucky to purchase her first traditional Simmental female from John Leek's, Mt Ararat Simmental stud in 2021. "I like the Simmental breed for their calm temperament, ease of care and overall structural soundness," Sienna says.

"I recently travelled to Canada and attended Canadian Western Agribition in 2023 and will be returning in late November 2024," she added. "I enjoy exploring new genetics and learning about potential imports to enhance my herd in Australia." Discussing breeding strategies with Canadian and other overseas breeders, helps her stay up to date on trends within the breed.

Sienna has many recent achievements and is no stranger to the show ring. She was recently crowned the Melbourne Royal Ausmectin Feature Grand Champion Parader, from 168 competitors. A great moment for this young lady and her family. She is proud of her achievements, in particular winning against competitors nearly 10 years older than her.

September/October have been a busy time for Ms Grylls. The family stud won the Best Maintained Simmental Team at Melbourne Royal 2024, she came second place with a Simmental team in the recent Melbourne Royal "Waterford Challenge". Recently awarded at Geelong Royal Show 2024 – Junior Champion and Reserve Champion Simmental, taking out Grand Champion Simmental with a powerful young heifer purchased from GB Livestock – GB Livestock Lady U107. Sienna said, "We really admire the power in this female, she will certainly mark her stamp in our breeding program."

Both Sienna and her sisters Jayde and Natalie began their cattle-showing experience at an early age, with their grandfather and father being involved with stud and



Sienna Grylls with her recent win – Melbourne Royal Ausmectin Feature Grand Champion Parader, her sister Jayde Grylls and Judges – Janelle and Trent Liebreich – Merit Cattle co who travelled all the way to Australia from Radville, Saskatchewan – Canada.

commercial cattle. "My goal is to grow my Simmental herd," she said. "Focusing on traditional Simmental cattle while also incorporating Black Simmentals and SimAngus bred animals."

"I plan to experiment with various genetics along the way, with my vision to not only succeed in the show ring, but breed high-quality cattle and eventually holding my own on-farm stud sale," she says.

Sienna is certainly dedicated to educating and immersing herself in all things related to Simmentals and the beef industry. She is ready to progress in the breed looking at today's markets demands, networking with selling agents, Australian and overseas breeders to secure her future in the breed.



Sienna Grylls at Melbourne Royal.



Sienna Grylls at Melbourne Royal.



Elite

CATTLE CO

BLACK SIMMENTAL & SIM-ANGUS

SAVE THE DATE

8TH ANNUAL
ON PROPERTY BULL SALE
'MURWOLLOCK' MEANDARRA, QLD 4422

September 4 2025

OFFERING 50 BLACK SIMMENTAL & SIM-ANGUS BULLS
WITH INVITED VENDOR ST PAULS GENETICS

GLEN WALDRON & KIM GRONER | 0438 662 117 | 0433 333 805 | INFO@ELITECATTLECO.COM.AU
WWW.ELITECATTLECO.COM.AU

EC.

2024 BULL SALE

48 BULLS SOLD TO \$36,000 TO AVERAGE \$15,754

THANK YOU FOR SUPPORTING OUR 2024 PROGRAM

Results

SALE TOPPER AND TOP PRICED YEARLING: LOT 37- ELITE UNDER WRAPS
SOLD FOR \$36,000 TO HATTON & CO, MONTO



TOP PRICED 2 YEAR OLD: LOT 1- ELITE TSISTIPAS
SOLD FOR \$28,000 TO HC RURAL, ESK, QLD



2023 BEEFING UP THE NEXT GENERATION CAMP

By William York

The 2023 Beefing Up the Next Generation Camp was one to remember. It saw 75 young cattle handlers located throughout Queensland, New South Wales, South Australia, Victoria, and Tasmania, ranging from the ages of five to 25 converge on Pittsworth, QLD to take part in the great events and opportunities that were on offer.

The camp kicked off Thursday morning with a farm tour of the U8J Cattle Co where competitors got to learn from a number of industry talks which covered a range of topics, these being a break down of Auction Plus, Prime Cattle Judging, Improved Pasture, and a live bull semen collection & evaluation.

Day 2 proceeded with several beef industry activities ranging from a Butchery visit, show cattle preparation, cattle judging breakdown and a steak cooking demonstration done by Chef Frank Correnti from the Norman Hotel which was one of the many highlights along with the Farmyard Olympics which was a fun ending to the day.

The kids were ready and raring to go Saturday morning, with the day kicking-off with the start of the Simmental show. This saw participants show off their skills for the hotly contested Supreme Exhibit in the cattle classes judged by Chelsea Rayner who was the 2022 Simmental Australia Ambassador. This award went to KBV United who was led by Miller Jones. The day finished with a meat demo, sausage making and young stud judges which was then followed up in the evening with an entertaining round of team judging.

Saturday night also saw the 2023 Beefing Up the Next Generation Auction bringing a success once again, with lots being sold across 3 states and all proceeds going back to support the Simmental Youth Movement in Queensland.

As we headed into our final day the Paraders competitions commenced with competitors using all the knowledge they have gained from the camp to show off their cattle. With Jamie Hollis from Kalara Livestock as the judge, the competition was a tight contest between participants. The

result of the Young Paraders Competition was Jack Postle coming out on top as Grand Champion Parader.



All the participants had a fun filled 4 days, all taking something away from it such as new lifelong friends or learning about Australia's beef industry and the important role the stud industry plays in supporting it.

In the major awards, Champion Prime Beef Judge and Public speaker were both taken out by Micquella Grima, Champion Stud Judge went to Nate Ryan, Champion Meat Judge was given to William York. The Future Cattleman's Award went to Jessica Beddows, along with Best & Fairest


to Liam Johnston and the Sportsmanship Award went to Dougall Skene.


The Joe Tones Memorial Trophy - Champion herdsman was awarded to Lila Burton, this award granted her a bursary to compete in the Tasmania Junior Beef Expo. The Reserve Simmental Australia Ambassador award was presented to Tom York which receives the opportunity to attend an AI course and lastly the Simmental Australia Ambassador award went to William York who receives the Ambassador Bursary.



Proven



MATERNAL POWER





MAVSTAR
SIMMENTALS

Ross, Rita, Ruby & Jacob Canning
Myamyn Victoria
Rita: 0409959058 | Ruby: 0437130913
Cattle, semen & embryos available for private sale.

Mavstar DAKOTA D708 – ZRZPD708 (P)
Leading Mavstar donor cow
Maverick Andy A593 ♂Maverick Krystal Z550

Maverick RED STAR 112 PPSPR112 (P)
Supreme Champion Beef Exhibit
Melbourne Royal Show 2022
Mavstar Licorice Red (PP) ♂Maverick My Girl

SIMMENTAL VICTORIAN BRANCH NEWS

By Garry Gillett & Vanessa Wenn

The Victorian Branch held its Biannual On Farm Challenge again this year. Starting on the 23rd of October and finishing on the 26th of October.

Winners will be announced at a luncheon on the 7th, December where an auction will also be held, starting with Lot 1 a heifer (Inverleigh Unwyn) donated by Stu Cameron – Inverleigh Simmentals. Stu Cameron – Invergordon, Victoria has been breeding Simmentals since the stud opened in 2011 and is proud to present the beautiful heifer breed by dam Inverleigh Selena, sired by Lucrana Radar.

Inverleigh Selena caught our eye in the 2022 “On Farm Challenge” and Lucrana Radar was a high selling Simmental Bull in 2022. The heifer born 28/08/2023 shows a true Radar calf – docile with softness and great EPD figures. We are proud to offer this heifer in our “On Farm Challenge” auction and thank Stu Cameron for his kind donation. (SJCPU014).

The Victorian branch auction is kindly sponsored by Stocklive – an elite online auction and/or livestreaming and data services platform designed to support the saleyard industry and on farm stud sales. Are you looking for a great company to stream your sale, can't get to the sale yards, well look no further!



Stocklive believe that all vendors should have the opportunity to access as many buyers as possible when selling their stock. The platform and technology used creates a useful program for increased number of sales using ring selling, which gives the viewer a full vision of the livestock being sold online, on any device, from anywhere you want. The services are already in use with major Regional Livestock Exchanges (RLX) along with Scone, Gippsland and numerous special feature sales around the country. Contact the team at www.stocklive.com.au

Simon Falkiner, Murdeduke Angus judged 116 head from 10 studs over the 4 days, travelling 2157kms, driven around by Victorian President Garry Gillett.

Simon had this to say about the cattle he'd seen:

Thank you for giving me the privilege of judging the recent Victorian Simmental on Farm Challenge. What a wonderful three days I had inspecting a quality offering of both stud and commercial Simmental cattle across Victoria. Congratulations must go to all the participants, your courage to put yourselves enthusiastically under the microscope in what has been a very difficult season for most is to be commended.

As an Angus breeder it was quite an eye opener to see, without the loss of the fundamentals that the Simmental is renowned for, the diversity within the breed, something we don't see in other breeds as much. Talking to the breeders I discovered that each slight difference had its purpose in making the breed very relevant to the different production systems we encountered.

In summary the traits that stood out for me across all visits were excellent foot structure, good toplines, along with great butt shape and muscle expression without the sacrificing of softness and doing ability. Probably the highlight of the trip was seeing some of the best older cows you would wish to see. Just about every visit had a grand old matron who was exhibiting great structure, femininity but with plenty of muscle and in general wonderful udders. The longevity of these magnificent cows was exceptional, a trait well worth preserving.

The quality of the commercial herds, in particular, was outstanding. From what I could see the commercial producers had found genetics to match their breeding objectives and blended them through their herds with great success. A credit to their seedstock suppliers and themselves.

Simon Falkiner



Stu Cameron



Judge - Simon Falkiner



Note:

Simmental will be the feature breed at the 2025 Royal Melbourne Show. We expect a large showing that will include a Youth program with excellent prizemoney & trophies.



MELBOURNE ROYAL SHOW 2025

Simmental Feature Breed and Junior Youth Program

SEPTEMBER - OCTOBER | MELBOURNE SHOWGROUNDS

*“if you can dream it,
you can do it”*

Feature judging to include:

- Simmental Junior Youth Program including a Photo Competition and Olympic Style events (open to all Junior members)
- Cash and Product Prizes
- Raffles and Youth Feature Giveaways

Become a Junior Simmental Member now, to be eligible to enter in the Junior Program 8 to under 25 years).



Simmental
AUSTRALIA



More details will come in
the new year.
For sponsorship opportunities,
contact us at:
simmentalvic@gmail.com
<https://simmental.com.au>

SIMMENTAL NSW BRANCH NEWS

By Jenny Bullen
Simmental NSW Secretary

This year seems to have flown, with many NSW members traversing Australia showing and selling their cattle with much success

It was pleasing to see a strong contingent of Simmental/Fleckvieh cattle being shown at the Sydney Royal Show this year with 103 purebred entries. Simmental producers provided the 2nd highest amount of breed entries to the show closely following the Angus Breed. Over 75% of Simmental Stud Exhibitors were under 40 years of age, so I can only see our breed becoming stronger.

Simmental Steers made a huge splash at Sydney Royal this year winning the Stan Hill Memorial Perpetual Trophy by being the champion Interbreed group of three steers.

Simmental NSW are again running the Pure Bred steer incentive at Sydney Royal 2025 with a huge jackpotted possible \$30,000 to be won. This is a great opportunity to promote your produce whilst having a chance to win the jackpot!

- 1) \$15000 awarded to a purebred exhibit sired by a purebred Simmental Bull registered with Simmental Australia winning Grand Champion Led Steer.
- 2) \$15000 awarded to a purebred exhibit sired by a purebred Simmental Bull registered with Simmental Australia winning Grand Champion Carcase.

At our AGM this year there was a changing of the guard, as our president Mr Simon Hale retired his position. We thank Simon for his valued service and wish him well creating a new beginning with the purchase of his new property.

Mr Luke Adams has taken the reins as President for 2024/2025. The NSW committee is looking very strong for the future with some exceptional young, talented members joining the committee. If you have any ideas, suggestions of just like to converse please reach out to any of our committee as I am sure they are willing to lend an ear.

Simmental NSW Committee

President - Luke Adams
Secretary - Jennifer Bullen
Treasurer – Stuart Moeck

Committee- Bill Cornell, Briony Looker, Anthony Simonetta, Stuart Hobbs and Grant Bulloch.

The NSW State Feature Show will be held at the Armidale and New England Ag Show to be held on the 7th and 8th March 2025 so please check your Calanders and stay tuned for future advertising.

Simmental NSW Youth Committee have been active and showing their versatility by being strongly involved with school, youth, rural shows, federal and international committees whilst promoting the Simmental Breed. I congratulate them on juggling study, new careers, businesses and family life to contribute to helping the next generation enjoy and succeed as young Simmental Australia members.

Congratulations to everyone who have achieved their goals this year and to those who are creating their goals step by step.

Cheers, here's to a great 2025!





Simmental
AUSTRALIA
SIMMENTAL NSW

SIMMENTAL NSW STATE BRANCH

2025 SYDNEY ROYAL PUREBRED STEER SHOW

Steers must be parent verified by DNA Testing to be sired by a Purebred bull registered with Simmental Australia.



\$15,000 Cash Prize awarded to the Exhibit, sired by a Purebred bull registered with Simmental Australia, winning Grand Champion Steer.



\$15,000 Cash Prize awarded to the Exhibit, sired by a Purebred bull registered with Simmental Australia, winning Grand Champion Carcase.

*This prize will **JACKPOT**
by \$5,000.00 per year
if not won!*



2024 SYDNEY ROYAL WINNING STAN HILL TEAM

CONTACT

Simmental NSW State Branch President
LUKE ADAMS 0497 267 370

NSW PRESIDENT

Youngest to take the reins

Mr Luke Adams of LNA Livestock has been elected NSW President for 2024/2025.

A little bit about Luke:

Luke was born into the cattle industry, having been raised on his parent's property in Londonderry NSW where they run a small feedlot & commercial operation consisting of 600 breeders. Luke started his journey and love of all things Simmental when he purchased his first female, Barana Emu in 2011.

Luke has made a huge imprint on his herd throughout the years by purchasing females and bulls from renowned breeders Wormbete, Valley Creek, Lancaster, Woonalee, Tullatoola and Savannah Simmentals. These foundation stock played an integral part in forming his stud Loaderry Simmentals which has been rebranded and is now known as LNA Livestock

In 2015 Luke met his wife Tash. Lukes's drive, passion and pride in Simmental cattle has sparked a huge interest for Tash who is now also heavily involved in the running of

their LNA Stud and supporting NSW Simmental Youth.

2019 was a huge year for Luke and Tash as they welcomed their first daughter Stassi, followed by daughter no 2, Darby. As this story is being written, number 3 is very close to being born and joining the LNA team.

2019 was also the year that LNA had the opportunity to purchase 2 females from Gk Livestock in conjunction with Lukes's sister Jessica. One female in particular, Alliance Marsterpiece J2 was sent to the doner pen and has since formed an extremely productive and functional line of females for LNA. Since then, Luke and Tash have taken great interest in ET and AI programs. They are now flushing donors and implanting embryos annually.

In 2022 Luke became a board member for Simmental NSW and Tash become the publicity officer for the Simmental NSW Committee. Having a young family has really driven



them to become more involved with Simmental NSW. Luke is looking to bring his passion to help shape and guide the next generation in becoming our future carers of the Simmental Breed. Both Luke and Tash are constantly looking for different ways to improve and create opportunities for members, especially our up-and-coming youth members.

Simmental NSW Youth created the Foundation Female Opportunity in 2023, with incredible support from LNA Livestock. Being young members themselves they generously put their hand up to create an opportunity for a youth member to own a Registered female and get a kick start to creating their future within the Simmental breed. Luke is very proud of this incentive, being the first Stud heifer donor and is passionate to see the program continue to grow and succeed.

2024 has been a huge one for Luke. A new property has been purchased at Boorowa on the southwest slopes of New South Wales where Luke and Tash are continuing to grow and extend their LNA stud. So, with a new property, growing family, daughters starting to show their fathers passion for showing cattle and being the youngest NSW President Luke will be a very busy man.

Thankyou Luke for your huge commitment.



Luke Adams with Henry Brewer.

SOUTH AUSTRALIAN “WINTER SHOWDOWN”

By Ben Brooksby
ben@nakedfarmer.org

The inaugural “Winter Showdown” cattle show in Penola, South Australia, was a resounding success. For years, organisers Mason Galpin, Ben Brooksby, Kim Wilson, and Luella Western had envisioned hosting a cattle show in June preceding the SA Junior Heifer Expo and Royal Shows to allow cattle to make their debut before larger events.

Their vision came to fruition this year, with entries opening in April and reaching full capacity within just 45 minutes, drawing entries from South Australia and Victoria. Over 100 cattle were exhibited at The Winter Showdown, including more than 30 Simmentals. Woonallee Pear U471 claimed the title of Reserve Champion Junior Heifer, while Windjammer Mr Universe was named Reserve Champion Bull.

2025 Winter Showdown will be held on the 7th of June.



Reserve Champion Heifer: Woonallee Pear U471



Reserve Champion Bull: Windjammer Mr Universe



Glenview Del

2024 YOUTH REPORT

By Briony Looker, President NSW Simmental Youth

For the 2024 year our NSW Youth committee decided to get out and about and support a variety of youth events, while also promoting our initiatives and incentives for NSW Youth members while out and about, in lieu of that we have once again had a busy 12-month period with more events and opportunities in the works for 2025.

Below is a summary of some of our major events.

2024 Sydney Royal Show Herdsman competition and the Leo Larsen commitment and compassion award.

The Herdsman competition winners were:

- Junior Herdsman – Hewen Moore
- Senior Herdsman – Rhys Robinson
- Overall Champion Herdsman – Will Tindal
- Leo Larsen Commitment & Compassion Award – Adam Scibberas.

This year we also awarded our 'Ribbons of Recognition' at the Sydney Royal Show:

- Outstanding Youth Parader – Jada Buchan
- Most Successful Youth Exhibitor – Adam Scibberas

Congratulations to all winners! We look forward to seeing everyone back at the 2025 Sydney Royal Easter Show!



Leo Larsen Award: Adam Scibberas and Linda Martin.



Blayney Ribbons of Recognition winners: Henry Brewer and Gus Harrington.
Photo credit: BA Showcase.

The Foundation Female Opportunity was back in 2024 with the generous support from Logie Simmentals, this year's recipient was Rhys Robinson from White Rock, NSW.

We wish to say a massive thankyou to Jenny and Graham Bullen from Logie Simmentals for supporting the initiative so strongly with the donation of one of their 2023 stud registered females and also to Luke and Tash Adams who were on the judging panel to select our winner.

This opportunity will be back in 2025 so keep an eye out for more information in early 2025 with entries opening in April 2025.



Sydney Show Senior Champion Herdsman: Rhys Robinson.



Foundation female Awardee Rhys Robinson with Jenny Bullen and heifer.
Photo credit: BA Showcase

In 2024 we have supported two major youth events, these being the Southern All Breeds Handlers Camp and the DIT Ag Tech National All Breeds Junior Heifer Show held in Blayney.

There was once again a very strong presence of Simmentals and Simmental youth members at the Blayney All Breeds and we were excited to host a trade site at the event where and engaged with a large number of current and potential Junior Simmental members.

A huge congratulations to Simmental breeders and members for supporting this event so strongly.

We optimised on the large number of youth members and awarded some 'Ribbons of Recognition' at the event:

Outstanding Youth Parader – Henry Brewer

Most Successful Youth Exhibitor – Gus Harrington



Blayney All Breeds stand.



Darby and Stasi Adams at Blayney Heifer show. Photo credit: BA Showcase.



Hobbs Boys at Blayney Heifer Show. Photo credit: BA Showcase.



Simmental Junior Members Group Photo at Blayney. Photo credit: BA Showcase.

Alongside these events we have also awarded 'Ribbons of recognition' at the Armidale and Qurindi Shows.

In July our very own Alana Wade was a successful recipient of one of the 2 scholarship opportunities offered by Simmental Australia to attend the 2024 World Simmental-Fleckvieh Federation Congress in Canada and also compete in the Young Canadian Simmental Association events while being hosted by Lewis Farms. Congratulations Alana!



Alana Wade WSFF Congress. Photo credit: Alana Wade.

All our committee members have been busy showcasing and promoting the breed and educating and supporting the next generation of Simmental juniors and I am very proud of them all for being so passionate and innovative.

The 2025 Armidale & New England show are running a NSW Simmental Feature show on March 7th & 8th where we will be running a vast array of Simmental and Simmental Youth feature events so be sure to keep an eye out on this one as more information comes to hand, its sure to be a great event.

We look forward to being able to offer more opportunities and events in 2025 so please keep an eye out on email, post and our social media channels!

WSFF CONGRESS CANADA

By Garry Gillett

Our Australian contingent consisting of Garry and Kaye Gillett, Peter Wenn (WSFF Vice President) and Vanessa Wenn arrived in Calgary after a long flight on Sunday 28th July.

DAY 1. Peter was in WSFF board meetings most of the day, I went to Bow Valley Genetics to look at the cattle I have there, and the girls went with the group to Lammie's Western outfitters.

That evening was the opening ceremony where Peter and other WSFF board members were presented white hats in a Canadian White Hat ceremony. A great night.

DAY 2. We traveled to Mader Ranches and guest breeders where we saw some fantastic Red and Black Simmental cattle and a lunch courtesy of Ryley, Jill, Randy and Ronda Mader.

In the afternoon we visited the Agsmart Educational Expo in Olds.

DAY 3. Departed for Banff by way of Tunnel Mountain, Bow Falls and the historic Banff Springs Hotel with rooms available for only \$3,000 per night. We then spent the afternoon shopping and exploring the town. It is an extraordinary place, and the scenery of the Canadian Rockies is breathtaking.

We then traveled to Boundary Ranch, (a Dude Ranch and Settler Museum) for supper. Then back to the Pomeroy Hotel, Olds.

DAY 4. Departed for Anchor D Simmentals where hosts Danny, Karen, McKenzie and Garren Skeels had an impressive display of Fullblood and Black Simmentals with added animals from other invited breeders. The lunch was a feast to remember with nothing spared.

That afternoon we traveled to Clearwater Simmentals and guest Breeders, another fantastic display of Fullblood, Red and Black Simmentals. Another great feast and entertainment.

DAY 5. Technical sessions at Olds College, just a short walk from the hotel. Speakers Dr Paige Pratt, Neogen, Dr Wade Shafer, ASA, Dr Alycia Chrenek, Zoetis and Dr Kee Jim, Beef on Dairy. These are available to view online.

That afternoon we traveled to Bohrsen's Sale Facility for the World Simmental Sale. And what a sale it was. Both Double Bar D Simmentals, Dimler family and Anchor D Simmentals, Skeel Family were presented with the WSFF Golden Book award to kick things off.

89 Simmentals were presented for sale with total clearance, averaging \$16,000. Fullblood, BBL Crimson Tide 335L sold Canadian semen rights for \$88,000, Walking rights

for another Fullblood, Silver Lake Jackson 24J went for \$100,000 with Mark Land & Cattle Co retaining semen rights. 15 straws of Anchor D Cartel 459K semen sold for \$1,200 a straw. Top selling female was another Full Fleck, Anchor D ADR Abigail 120K who sold for \$80,000 with 3 or 4 other females going for \$30,000.

Bohrson's had catered for 700 people to attend but more than 1000 turned up. A great steak dinner with top class entertainment was provided that rocked into the night.

DAY 6. We attended the YCSA National Classic Conformation Show. A fantastic youth show to be envied. Here we also met up with our 2 Australian girls who were winners of a trip to Canada sponsored by Simmental Australia and the WSFF. Both girls had placement at top studs while in Canada. Alana Wade at Lewis Farms and Erin Goodwin with Mader Farms. Both were thrilled to have been chosen and described it as a trip of a lifetime. The breed is in good hands.

That evening we attended the Friends of Canadian Simmental Foundation, fundraiser auction and CSA World Congress Banquet, a great night. We also met up with other traveling Aussies, Ruby and Thomas.

DAY 7. We then traveled back to Calgary for the closing ceremony and Banquet where Peter and I presented Bruce Holmquist with a 50th Anniversary Buckle. It was a night filled with presentations with amazing Indian Hoop Dancers.

DAY 8 FINAL DAY. Attended Strathmore Stampede and Rodeo with Chuck Wagon races. Wow, we have never seen anything like it. What a day, the Chuck wagon races were just incredible. Top cowboys competing in the finals with all rough stock events plus calf and team roping and steer wrestling. An extraordinary day to top off the week.

We had a memorable time making new friends, catching up with old ones and networking with other likeminded Simmental/Fleckvieh breeders from around the world.

Thanks to Bruce Holmquist, Gail, Barb, Laura, Sue, Stacy, Jenny all the guides, Mader Ranches, Anchor D Simmentals, Clearwater Simmentals and all the Canadian Simmental Breeders for putting on a great Congress and making everyone feel welcome and at home.

The next Congress is in 2 years' time and will be in Scotland and Ireland, should be another trip to remember.





Congress participants at Bow Falls in Banff.



Aussie's were represented by Peter Wenn, Erin Goodwin, Alana Wade, Vanessa Wenn, Bruce Holmquist - Canadian Simmental, Kaye Gillett, Garry Gillett, Catharine Jennings, Ruby Canning and Thomas Clarke.



Gary Gillett and calf at Anchor D Simmentals.



Miss Strathmore Rodeo, Garry Gillett, Pete Wenn and Miss Canadian Rodeo 2024.



White Hat Ceremony where the representatives of each country receive a white hat for their contribution to the breed - Peter Wenn is second from the right.



Cattle at Anchor D Ranch.

YOUR GUIDE TO ACCESSING CGEN ON OUR WEBSITE

2



Dear Members,

Whether you're a new or existing member, we want to ensure you have all the resources you need to make the most of CGEN on our website. Below, you'll find a handy guide outlining key functions, along with links to helpful videos.

ACCESSING CGEN AND OUR WEBSITE

1. How to Log In

Learn how to access your account with step-by-step instructions.

2. How to Register

A guide to registering your animals and getting started.

3. How to Transfer Animals

Instructions for transferring ownership and updating records.

4. How to Post Inventory

Tips for posting your inventory efficiently.

5. How to Submit DNA

Everything you need to know about submitting DNA samples.

6. Other Handy Hints

Additional tips to help you navigate the system smoothly.

3



4



5



6



These videos are designed to assist you in navigating the registration system, especially outside of office hours, so you can focus on what matters most in your day.



Scan the QR code for more information.

BEEF

BEEF 2024

RESULTS

Calf Champion Female

Ellendale Flirtin' With Desire

Reserve Calf Champion Female

Rafter L Livestock Smokin Opal

Junior Champion Female

Elite Black Wendy T165

Reserve Junior Champion Female

Ellendale Cowboy Killer

Senior Champion Female

K.B.V. Romy

Reserve Senior Champion Female

Ellendale Cinderalla Bling

Grand Champion Female

K.B.V. Romy

Calf Champion Male

Elite Under Par

Reserve Calf Champion Female

Hobbs Livestock Upoar

Junior Champion Male

K.B.V. United

Reserve Junior Champion Male

Elite Triumph

Senior Champion Male

Meldon Park Stamp Duty

Reserve Senior Champion Male

Bandeeka Taylor Made

Grand Champion Male

Meldon Park Stamp Duty



Grand and Senior Champion Bull: Meldon Park Stamp Duty



Grand and Senior Champion Female: K.B.V. Romy



Reserve Senior Champion Bull: Bandeeka Taylor Made



Junior Champion Bull: K.B.V. United

EKKA

ROYAL BRISBANE SHOW 2024

RESULTS

Junior Champion Female

Ellendale Cowboy Killer

Reserve Junior Champion Female

Ellendale Flirtin' With Desire

Senior Champion Female

Ellendale Cinderella Bling

Reserve Senior Champion Female

K.B.V. Romy

Grand Champion Female

Ellendale Cinderella Bling

Junior Champion Male

K.B.V. United

Reserve Junior Champion Male

Ellendale Ace In The Hole

Senior Champion Male

Bandeeka Taylor Made

Grand Champion Male

K.B.V. United

Pair of Bulls

Silver Linings Simmentals

Breeders' Group

Ellendale Simmentals



Grand Champion Male: K.B.V. United



Junior and Grand Champion Bull: K.B.V. United



Grand Champion Female: Ellendale Cinderella Bling

SYDNEY

ROYAL SHOW 2024

RESULTS

Junior Champion Female

VC Lucy T054

Reserve Junior Champion Female

Country Style Under The Limite

Senior Champion Female

Hobbs Livestock Voilets Merchant

Reserve Senior Champion Female

Tugulawa Serene

Grand Champion Female

Hobbs Livestock Voilets Merchant

Junior Champion Male

VC Umpire

Reserve Junior Champion Male

Hobbs Livestock Noble Prize

Senior Champion Male

Hartfield Titan

Reserve Senior Champion Male

Fleckvieh

Grand Champion Male

Hartfield Titan

Supreme Junior Champion Interbreed Heifer

VC Lucy T054



Grand Champion Bull: Hartfield Titan



Grand Champion Female: Hobbs Livestock Violets Merchant



Junior Champion Bull: VC Umpire



Junior Champion Female and Supreme Junior Champion Interbreed Heifer: VC Lucy T054

CANBERRA

ROYAL SHOW 2024

RESULTS

Junior Champion Female

Tennysonvale Target

Reserve Junior Champion Female

Tennysonvale Tessa

Senior Champion Female

VC Cream Soda

Reserve Senior Champion Female

VC Hyacinths

Grand Champion Female

Tennysonvale Target

Junior Champion Male

VC Umpire

Reserve Junior Champion Male

Tennysonvale Tikardo

Grand Champion Male

VC Umpire

Supreme Exhibit

VC Umpire

Breeders Group

Tennysonvale



Supreme Exhibit: VC Umpire



Grand Champion Female: Tennysonvale Target



Reserve Senior Champion Female: VC Hyacinths

TOOWOOMBA

ROYAL SHOW 2024

RESULTS

Calf Champion Female

Ellendale Cowboy Killer

Reserve Calf Champion Female

Ellendale Flirtin' With Desire

Junior Champion Female

Double K Temptation T038

Reserve Junior Champion Female

Double K Triumph T037

Senior Champion Female

Double K Special Edition

Reserve Senior Champion Female

Ellendale Isabellas Islay

Grand Champion Female

Double K Special Edition

Calf Champion Male

Ellendale High Stakes

Junior Champion Male

Ellendale Backhanded Panda

Senior Champion Male

Ellendale Stylish Choice

Grand Champion Male

Ellendale High Stakes

Supreme Exhibit

Double K Special Edition



Supreme Exhibit: Double K Special Edition

ADELAIDE

ROYAL SHOW 2024

RESULTS

Junior Champion Female

Jillangolo Ms Authority

Reserve Junior Champion Female

Woonallee Dream Lady

Senior Champion Female

Woonallee Vasti

Grand Champion Female

Woonallee Vasti

Junior Champion Male

Woonallee Urban Magic

Reserve Junior Champion Male

Tolhverrae Ute Muster

Senior Champion Male

Longview Ulysses

Grand Champion Male

Woonallee Urban Magic

Supreme Exhibit

Woonallee Vasti

Breeder's Group

1st Woonallee

2nd Jillangolo

3rd Tolhverrae



Grand Champion Bull: Woonallee Urban Magic



Grand Champion Female: Woonallee Vasti



Interbreed Grand Champion Pair: Woonallee Vasti, Woonallee Urban Magic



Interbreed Junior Pair: Jillangolo Ms Authority, Woonallee Urban Magic

PERTH

ROYAL SHOW 2024

RESULTS

Junior Champion Female

Bandeeka Urchin

Reserve Junior Champion Female

Bandeeka Ullie

Senior Champion Female

Bandeeka True Fortune

Reserve Senior Champion Female

Bandeeka Black Spangles

Grand Champion Female

Bandeeka True Fortune

Junior Champion Female

Bandeeka Unicorn

Reserve Junior Champion Male

Bandeeka Ultra Royal

Grand Champion Male

Bandeeka Unicorn

Supreme Exhibit

Bandeeka True Fortune



Champion Breeders Pair Interbreed



Supreme Junior Champion Bull: Bandeeka Unicorn

RESULTS INTERBREED

Interbreed Junior Bull

Bandeeka Unicorn

1st in Bulls Pair

Bandeeka Unicorn & Bandeeka Ultra Royal

2nd Place in Heifers Pair

Bandeeka Urchin & Bandeeka Ullie

Supreme Beef Breed Pair

Bandeeka Unicorn (Bull) & Bandeeka True Fortune (Cow & Calf)

Champion Breeders Group of 3

**Bandeeka Unicorn (Bull)
Bandeeka Tur Fortune (Cow & Calf)
Bandeeka Urchin**

Grand Champion Calf

Bandeeka Valletta (calf of True Fortune)



Supreme Beef Breed Pair: Bandeeka Unicorn (Bull) & Bandeeka True Fortune (Cow and Calf)

MELBOURNE

ROYAL SHOW 2024

RESULTS

Junior Champion Female

VC Strike U042

Reserve Junior Champion Female

Jillangolo Ms Authority U20

Senior Champion Female

Woonallee Julani T193

Reserve Senior Champion Female

VC Cream Soda T014

Grand Champion Female

VC Strike U042

Junior Champion Male

VC Under The Radar U065

Reserve Junior Champion Male

Mavgold Unique

Grand Champion Male

VC Under The Radar U065

Supreme Exhibit

VC Strike U042



Grand Champion Female: VC Strike U042



Grand Champion Male: VC Under The Radar U065



Reserve Junior Champion Female: Jillangolo Ms Authority U20



Reserve Senior Champion Female: VC Cream Soda T014



Senior Champion Female: Woonallee Julani T193

GEELONG

ROYAL SHOW 2024

RESULTS

Junior Champion Female

GB Livestock Lady U107

Reserve Junior Champion Female

Barana Umina U37

Senior Champion Female

Pinaroohills Ultimate Showgirl

RESULTS

Grand Champion Female

GB Livestock Lady U107

Senior Champion Bull

Longview Ulysses U007

Grand Champion Bull

Longview Ulysses U007



Grand Champion Female: GB Livestock Lady U107



**Senior Champion Female:
Pinaroohills Ultimate Showgirl**



**Reserve Junior Champion Female:
Barana Umina U37**



Coolibah

ROYAL STEER COMPETITION RESULTS

BORTHWICK TROPHY STEERS 2024

Simmental placed third in the Borthwick Trophy steer comp this year at Melbourne Royal consisting of a domestic liveweight steer exhibited by Jackson Bald of Grant High school and bred by GC & VJ Muller with 92.49 individual points and weighing 459kg. The Champion Domestic on Hoof and Champion School Steer exhibited by Oliver Bramley of Allendale East Area School and bred by B P Creek, weighing 455kg. And a 2nd place Export steer exhibited by Lewis Bruggeman of Glental Partnership with 90.19 points and weighing 561kg.



(L to R) Lewis Bruggeman, Glental Partnership; Jackson Bald, Grant High School; Oliver Bramley Allendale East Area School.

SIMMENTAL TAKES OUT TFI TEAM OF 3 AT ADELAIDE ROYAL

WINNING TEAM:

Exhibit - 6 - Woonallee Ugg Boot
Carcase Score 83.01 pts
Exhibited by Tom & Lizzy Baker

Exhibit - 25 - Glental Rough Habit U4
Carcase Score 83.72 pts
Exhibited by Glental Partnership

Exhibit - 116 - Woonallee Muscles
Carcase Score 86.15 pts
Exhibited by Loxton High School



TFI Team.

Carcase success also includes:

Champion Crossbred Export Steer on Hook - Lancaster with a SimAngus steer

Champion Light Domestic Steer on Hook - Scotch College with a Simmental X steer

Best Simmental Steer - Woonallee with Woonallee Ugg Boot

Highest Scoring Simmental Carcase - Loxton High School with Woonallee Muscles

STAN HILL TROPHY STEERS

Simmental took out top honours in the 2024 Stan Hill Trophy with a score of 256.52 points consisting of a lightweight steer by VC Simmentals with 87.32 individual points and weighing 410kg. A Hobbs Livestock middle weight steer with 85.08 individual points and weighing 495kg. And a heavyweight steer from Blue Gene Cattle Company with 84.12 individual points and weighing 528kg.

The Reserve steer by B.A.L. Simmentals weighed 540kg liveweight with 79.72 individual points.



(L to R) (Res) B.A.L. Simmentals, Blue Gene Cattle Company, Hobbs Livestock and VC Simmentals.



Simmental
AUSTRALIA

IGS EPD AVERAGES

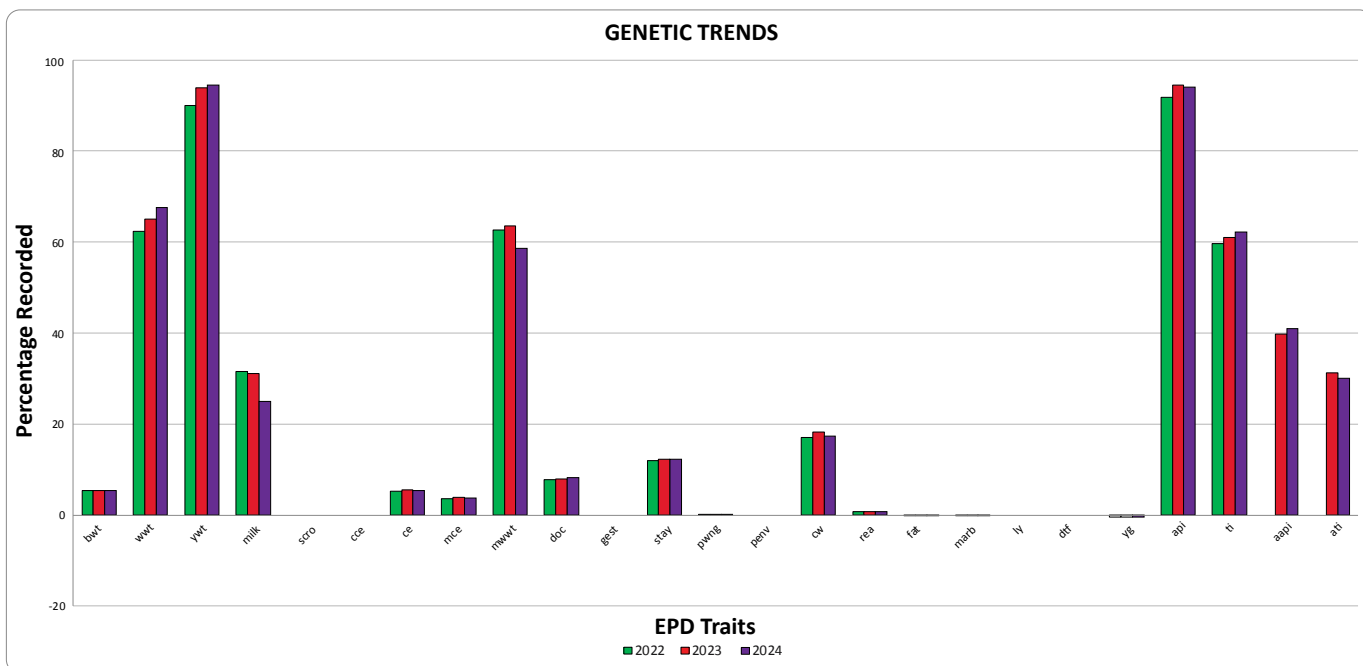
- All averages are based on a 5 year rolling average so calves born in the last 5 years.
- Apart from the trend graph which is a direct year average.

BREED AVERAGE - SIMMENTAL 2024

CTYPE	BWT	WWT	YWT	MILK	SCRO	CCE	CE	MCE	MWWT	DOC	GEST	STAY
AVG	5.557	71.913	100.969	26.549			5.298	3.631	62.411	9.064		13.408

PWNG	PENV	CW	REA	FAT	MARB	LY	DTF	YG	API	TI	AAPI	ATI
0.182		20.184	0.779	-0.111	-0.089			-0.483	95.703	63.957	46.346	36.457

GENETIC TRENDS



ACCURACY AND POSSIBLE CHANGE

Every EPD is presented with an associated accuracy value. Accuracy values reflect the amount of information available on the animal and it relatives for use in genetic evaluation. As we obtain and use more information in evaluating an animal's genetic merit, the accuracy value will increase. Accuracy values can range from 0.00 and 1.00 with a higher value representing greater accuracy.

Because accuracy indicates available information, they are extremely valuable as a risk management tool. The higher the accuracy the more certain we are of an animal's genetic merit and thus, the less risk there is in using the animal. The table shows the possible change (plus or minus) in the EPD of an animal, based on its' accuracy. Any EPD changes are expected to fall within this range (EPD plus and minus the possible change) 95% of the time.

Acc	CE	BW	WW	YW	MCE	Milk	MWW	Stay	CW	REA	Fat	Marb
0.00	7.8	3.0	16.3	25.7	7.9	11.9	12.1	7.1	19.3	0.43	0.04	0.26
0.10	7.0	2.7	14.7	23.1	7.1	10.7	10.9	6.4	17.4	0.39	0.04	0.23
0.20	6.2	2.4	13.0	20.6	6.3	9.5	9.7	5.7	15.4	0.34	0.03	0.21
0.30	5.4	2.1	11.4	18.0	5.5	8.3	8.5	4.9	13.5	0.30	0.03	0.18
0.40	4.7	1.8	9.8	15.4	4.7	7.1	7.3	4.2	11.6	0.26	0.02	0.16
0.50	3.9	1.5	8.2	12.9	3.9	6.0	6.1	3.5	9.7	0.22	0.02	0.13
0.60	3.1	1.2	6.5	10.3	3.1	4.8	4.8	2.8	7.7	0.17	0.02	0.10
0.70	2.3	0.9	4.9	7.7	2.4	3.6	3.6	2.1	5.8	0.13	0.01	0.08
0.80	1.6	0.6	3.3	5.1	1.6	2.4	2.4	1.4	3.9	0.09	0.01	0.05
0.90	0.8	0.3	1.6	2.6	0.8	1.2	1.2	0.7	1.9	0.04	0.00	0.03
1.00	0.0	0.0	0.0	0.0	0.0	0.0	0.0	0.0	0.0	0.00	0.00	0.00

Statistics from the Aug 8, 2023 BOLT Evaluation

EPDs are directly comparable, regardless of the accuracy, and they are also the most reliable reflection of an animal's genetic merit. Accuracies, simply reflect potential risk.

EPD RANKING - SIMMENTAL

%	BWT	WWT	YWT	MILK	SC	CCE	CE	MCE	MWWT	DOC	GEST	STAY	PWNG	PENV	CW	REA	FAT	MARB	LY	DTF	YG	API	TI	AAPI	ATI
1	0.4	98.2	139.5	38.8			13.3	9.2	81.1	16.6		19.6	0.28		43.142	1.14	-0.054	0.25			-0.627	130.748	82.26	79.328	90.53
2	0.9	94.6	134.8	37.3			12.2	8.4	78.8	15.6		19	0.27		39.484	1.1	-0.065	0.19			-0.608	125.378	80.128	75.514	82.627
3	1.4	92.126	131.226	36.3			11.6	8	77.3	14.9		18.6	0.26		37.326	1.07	-0.076	0.16			-0.595	121.58	78.373	73.235	77.7
4	1.8	90.2	128.7	35.7			11.2	7.6	76.1	14.3		18.3	0.25		35.9	1.04	-0.082	0.12			-0.587	118.66	77.284	71.54	73.827
5	2.2	89	127	35			10.7	7.4	75.3	13.9		18	0.25		34.7	1.03	-0.085	0.1			-0.58	117.01	76.19	70.11	71.001
10	3.2	84.4	120.4	33.1			9.2	6.5	72.2	12.5		17.1	0.23		31	0.97	-0.094	0.05			-0.558	111.15	72.672	65	62.002
15	3.9	81.6	116	31.9			8.4	5.9	70.1	11.8		16.5	0.22		28.8	0.93	-0.098	0.02			-0.543	107.73	70.45	61.483	56.863
20	4.3	79.5	112.9	31			7.7	5.6	68.6	11.2		15.9	0.21		26.8	0.9	-0.101	0			-0.532	105.12	68.974	58.54	52.664
25	4.6	77.7	110.4	30.1			7.1	5.2	67.3	10.7		15.5	0.21		25.4	0.87	-0.104	-0.02			-0.523	102.94	67.78	55.98	49.35
30	4.8	76.3	108.1	29.4			6.7	4.8	66.1	10.3		15	0.2		24.1	0.85	-0.106	-0.03			-0.515	100.97	66.76	53.716	46.37
35	5.1	74.9	105.8	28.7			6.2	4.5	65.1	9.9		14.6	0.19		22.9	0.83	-0.108	-0.05			-0.507	99.23	65.82	51.58	43.36
40	5.3	73.7	103.8	28			5.8	4.2	64.2	9.5		14.2	0.19		21.9	0.81	-0.109	-0.06			-0.5	97.538	64.95	49.45	40.928
45	5.5	72.6	102	27.3			5.4	4	63.3	9.2		13.9	0.19		20.9	0.79	-0.111	-0.07			-0.493	95.98	64.16	47.58	38.39
50	5.7	71.5	100.3	26.7			5	3.7	62.4	8.8		13.5	0.18		19.9	0.78	-0.112	-0.09			-0.486	94.64	63.41	45.76	36.05
55	5.9	70.4	98.6	26.1			4.7	3.5	61.4	8.5		13.1	0.18		19	0.76	-0.114	-0.1			-0.479	93.18	62.63	44.09	33.59
60	6.1	69.3	96.9	25.4			4.3	3.1	60.5	8.2		12.7	0.17		18	0.74	-0.116	-0.11			-0.472	91.89	61.83	42.41	31.14
65	6.3	68.1	95.1	24.6			4	2.9	59.6	7.8		12.4	0.17		17	0.73	-0.118	-0.13			-0.465	90.49	61.04	40.75	28.57
70	6.5	66.9	93.3	23.8			3.7	2.5	58.6	7.6		12	0.16		15.9	0.71	-0.119	-0.14			-0.458	89.014	60.26	38.954	26.174
75	6.7	65.7	91.3	23.1			3.4	2.2	57.7	7.3		11.5	0.16		14.7	0.69	-0.121	-0.16			-0.449	87.45	59.4	36.915	23.06
80	7	64.3	89.2	22.3			3	1.8	56.3	7		11	0.15		13.5	0.67	-0.124	-0.18			-0.439	85.66	58.39	34.656	20.17
85	7.2	62.6	86.4	21.2			2.4	1.3	54.9	6.6		10.4	0.14		11.8	0.63	-0.126	-0.2			-0.426	83.76	57.357	31.867	16.36
90	7.6	60.4	83	19.8			1.78	0.7	52.9	6		9.6	0.13		9.8	0.59	-0.129	-0.24			-0.412	81.29	56.098	28.7	11.15
95	8.3	56.8	77.3	17.6			0.7	-0.2	49.9	5.1		8.4	0.12		6.5	0.53	-0.135	-0.3			-0.381	77.689	54.2	23.76	3.109

NEW ACCREDITED AI SIRES

in 2024

IDENT	NAME	REGISTER	APPLICANT
SPGPR417	ST PAULS REVENUE	Black	Bill Cornell
IMCPS6322	APLX COACH 37J	Fullblood	Scott York
IMU3T2510	GIBBS SIGNATURE 2510K	Black	Tom Baker
IMU2T0597	WBF PATTON K059	Black	Tom Baker
IMCX8065	MADER NIGHT SHIFT 63K	Black	Goldstar Genetics
ZKXPR006	HERLO PARK ROVER	Simmental	Herlo Park
ALUPJ008	CALLEDALE JASPER	Simmental	Herlo Park
WEEPR167	WOONALLEE REDEMPTION	Simmental	Hartfield
IMUXP6516	LRS DUTTON 611K	Black	World Wide Sires
IMC3X48367	ERIXON ASSET 91J	Red	Semex
IMCPX0695	BILJ POL JAMIE 31J	Simmental	Semex
IMCPR1525	CITYVIEW GOLD TRIGGER 76H	Fullblood	Agri-Gene
IMU2T013	DIKEMANS KONZA 13K	Black	ST Genetics
IMU2S949	APEX PROCLAMATION DG949J	Black	ST Genetics
IMNPX0024	OPAWA KAMIKAZE	Simmental	Yerwal Est
IMNPX0132	KERRAH KINGDOM	Simmental	Yerwal Est
IMNPX0491	KERRAH JAGUAUR J491	Simmental	Yerwal Est
IMCPN4066	SPRING CREEK LAUNCH 110E	Red	S & S Moeck
IMU2R139	REDHILL DOUBLE AGENT 139H	Red	Brad & Sylvia Patterson

TOP 10 DONOR DAMS

for 2023 born calves

DAM IDENT	DAM NAME	MALE	FEMALE	TOTAL EMBRYOS	OWNER
AJYPR107	WILLANDRA MYSTIC R107	7	8	15	NGS
LCSPM432	LANCASTER STRIKE M432	7	6	13	SPG
SPGPQ424	ST PAULS NUK N401 PEAR Q424	7	4	11	SPG
SHLPH003	HOBBS LIVESTOCK HONEY BEE	5	6	11	SHL
GBLPP101	GRANOCLIVESTOCK PEACHES	2	8	10	GBL
LCSPK281	LANCASTER PRINCESS K281	5	5	10	SPG
LCSPK266	LANCASTER ERICA K266	4	5	9	JRV
SHLPL005	HOBBS LIVESTOCK KEEPSAKE L5	3	5	8	SHL
LCSPG175	LANCASTER BLANCHE G175	5	3	8	WEE
SPGPE433	ST PAULS OLIE LUCY E433	3	4	7	SPG
ERPPR065	BULLOCKHILLS R65	2	5	7	ERP
LGPPH2128	WOMBRAMURRA XSIM M LKY ONE H21	3	3	6	WEE
LGPPD033	WOMBRAMURRA D033	3	3	6	WEE
MBBPP073	BONNYDALE CAMILLE P73	3	3	6	MBB
WEEPN112	WOONALLEE SIMPLY THE BEST N112	2	4	6	ZKR



Simmental
AUSTRALIA

TOP 25 ACCREDITED SIRES

for 2023 born calves

RANK	NAME	TOTAL COUNT	MALES	FEMALES	NAT	AI
1	WS PROCLAMATION E202	205	97	108	0	205
2	STREVAN PARK DANNY M211	91	1	90	85	6
3	BONNYDALE QUAKER	74	31	43	74	0
4	TENNYSONVALE NITRATE	72	26	46	72	0
5	SCHOOLEY STANDOUT 27G	71	41	30	0	71
6	BANDEEKA POWER PACK	58	28	30	58	0
7	BONNYDALE RAWHIDE	56	25	31	55	1
8	TJ GOLD 274G	55	28	27	0	55
9	BONNYDALE SA HECTOR	53	30	23	53	0
9	MAVSTAR RAWHIDE 200	53	26	27	53	0
10	LBRS GENESIS G69	50	23	27	0	50
10	BONNYDALE REVENUE	50	22	28	50	0
11	BONNYDALE SA KLOONEY R417	49	20	29	49	0
12	GIBBS 7382 BROAD RANGE	48	29	19	0	48
13	BONNYDALE ROCK N ROLL	47	22	25	47	0
13	BONNYDALE RHINO	47	25	22	45	2
14	BONNYDALE DIVIDEND R43	44	23	21	23	21
14	WOONALLEE LAS VEGAS Q245	44	0	44	44	0
15	NU-PLAINS PADDY	43	24	19	43	0
16	GIBBS 9114G ESSENTIAL	42	23	19	0	42
16	WILLANDRA PANAMA	42	22	20	42	0
17	LUCRANA QUEENSLANDER	38	23	15	38	0
17	GLEN ANTHONY Y-ARTA AY02	38	19	19	0	38
17	WOONALLEE NOBLE PRIZE Q368	38	22	16	38	0
18	WOONALLEE REVOLUTION	37	22	15	32	5
19	KBHR HONOR H060	36	18	18	0	36
19	WOONALLEE LEGACY L183	36	22	14	36	0
19	WILLANDRA PRESIDENT	36	17	19	21	15
20	CLRS GUARDIAN 317G	35	19	16	0	35
20	LFE THE RIDDLER 323B	35	18	17	0	35
20	BONNYDALE TANKER K159	35	35	0	35	0
21	WOONALLEE RAWHIDE	33	12	21	33	0
21	WOONALLEE RANDOM	33	18	15	33	0
22	WOONALLEE REBOUND	32	11	21	32	0
22	BONNYDALE ELEMENT Q39	32	12	20	31	1
22	CASA TORO QUICKDRAW Q191	32	14	18	32	0
22	BARANA NOTTINGHAM	32	12	20	32	0
23	JARRAVAL PHARAOH	31	15	16	31	0
23	SPRINGSIDE PACMAN	31	14	17	31	0
23	BBS TRUE JUSTICE B10	31	15	16	0	31
23	MILKY WAY ROLEX	31	1	30	31	0
24	BANDEEKA RAFFLES	30	16	14	30	0
24	BONNYDALE QUANTUM	30	16	14	30	0
25	YERWAL EST QUANTIFIER	29	0	29	29	0
25	CASA TORO Q036	29	16	13	29	0
25	TJ ROOSEVELT 366E	29	14	15	0	29

ACCOUNTING FOR A BEEF CATTLE STUD IN AUSTRALIA

By Carl Baldry, Partner at Baldry & Carr Accountants
Stud cattle breeder at Tennysonvale Simmentals

Hear Me Out: There Are Benefits To Caring About Your Farm Accounts

As a stud cattle breeder myself at our family stud, Tennysonvale Simmentals, and a partner at Baldry & Carr Accountants, I know that with the unique rhythms of farming life, it's essential to keep your financial house in order. Smart tax planning can make a significant difference, helping you save money and reinvest in your operation. Let's dive into the benefits of tax planning, specifically focusing on primary production averaging and farm management deposits, along with a quick look at how Xero can support your efforts.

Understanding Primary Production Averaging

Primary production averaging is a fantastic tool for farmers, allowing us to manage fluctuations in income. In the beef cattle industry, income can vary significantly from year to year based on market conditions, herd size, and feed availability. This is where averaging comes into play.

With primary production averaging, you can smooth out your taxable income over five years. This means that in a good year, you're not hit with a massive tax bill, and in lean years, you can benefit from reduced taxable income. It's like having a safety net, helping you maintain cash flow stability and avoid the highs and lows of taxation. This can be a game-changer for budgeting and planning your expenses, whether it's buying new stock, investing in better feed, or upgrading equipment.

Farm Management Deposits (FMDs)

Another vital aspect of tax planning is Farm Management Deposits (FMDs). This scheme allows you to set aside pre-tax income in good years, which you can then draw on in lean years. Essentially, you're creating a buffer for your business, ensuring that you have funds available when you need them most.

The great thing about FMDs is that they're flexible. You can make deposits when times are good and withdraw funds when needed, all while receiving tax benefits for your contributions. This approach not only helps with cash flow management but also provides a strategic way to lower your taxable income in more profitable years.

Benefits of Effective Tax Planning

1. **Smoother Cash Flow:** By utilizing primary production averaging and FMDs, you can better manage cash flow throughout the year. This stability allows you to make more informed decisions about investments in your stud, whether it's purchasing new genetics or improving your facilities.
2. **Tax Efficiency:** Tax planning helps ensure that you're not overpaying on taxes. By spreading your income and saving through FMDs, you can minimize your taxable income, leading to more funds available for reinvestment in your operation.

3. **Better Financial Forecasting:** When you have a clear picture of your tax obligations and income fluctuations, you can forecast your finances more accurately. This helps with budgeting and planning for future growth, ensuring that you're not caught off guard by unexpected expenses.
4. **Increased Resilience:** Agriculture is subject to many external factors, from droughts to market volatility. With effective tax planning, you can build resilience into your business model, making it easier to weather tough times.
5. **Improved Investment Potential:** With better cash flow management and a strategic approach to tax, you can allocate resources toward opportunities that drive growth. Whether that's expanding your herd or investing in sustainable practices, you'll be in a stronger position to make impactful decisions.

How Xero Fits In

While tax planning is key, managing your accounts efficiently is equally important, and this is where Xero shines, and why it is the software of choice for us at Baldry & Carr and Tennysonvale Simmentals. This accounting software allows you to keep track of your income and expenses in real time, making it easier to manage your finances. With features that allow you to run reports and track your cash flow, Xero helps you stay on top of your financial situation.

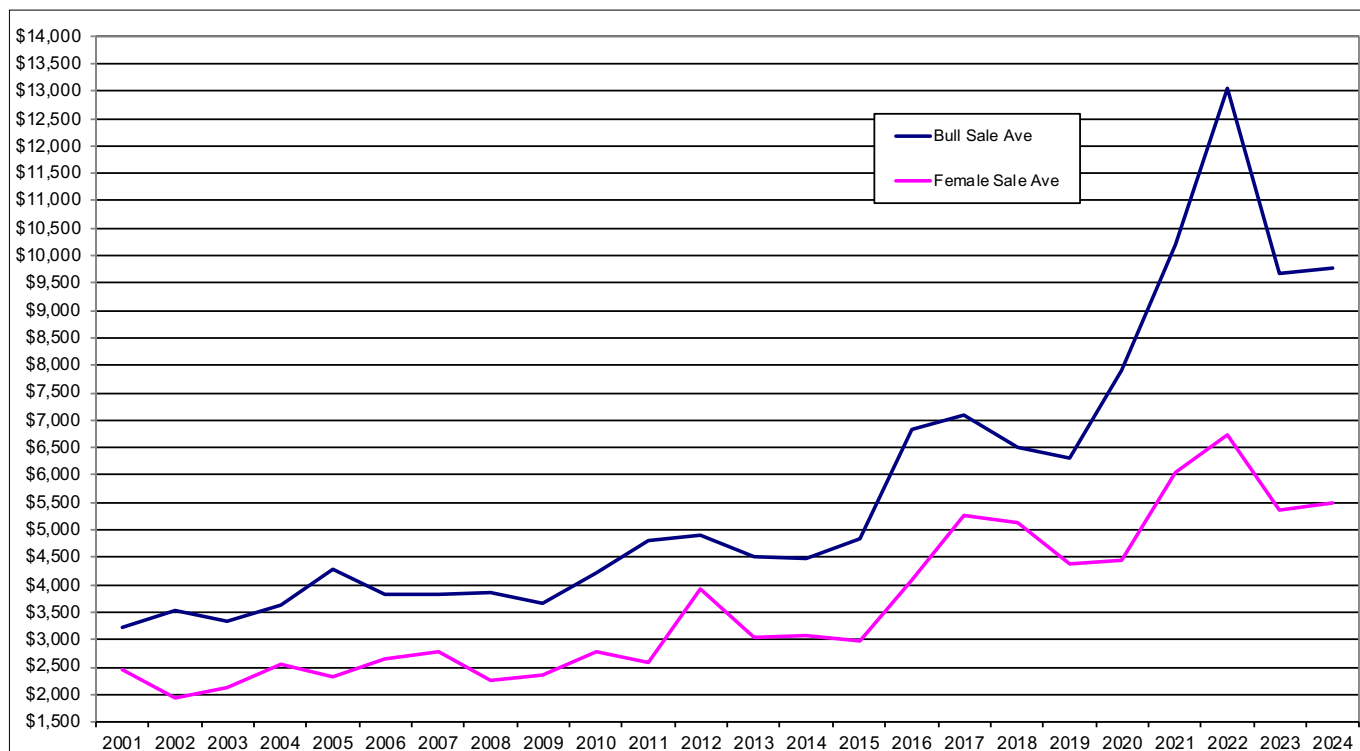
Plus, it integrates seamlessly with tools for farm management, ensuring that your financial data aligns with your operational needs. By using Xero, you can focus more on implementing your tax strategies and less on the nitty-gritty of accounting. It's a smart way to ensure that your tax planning works hand-in-hand with your overall financial management.

Final Thoughts

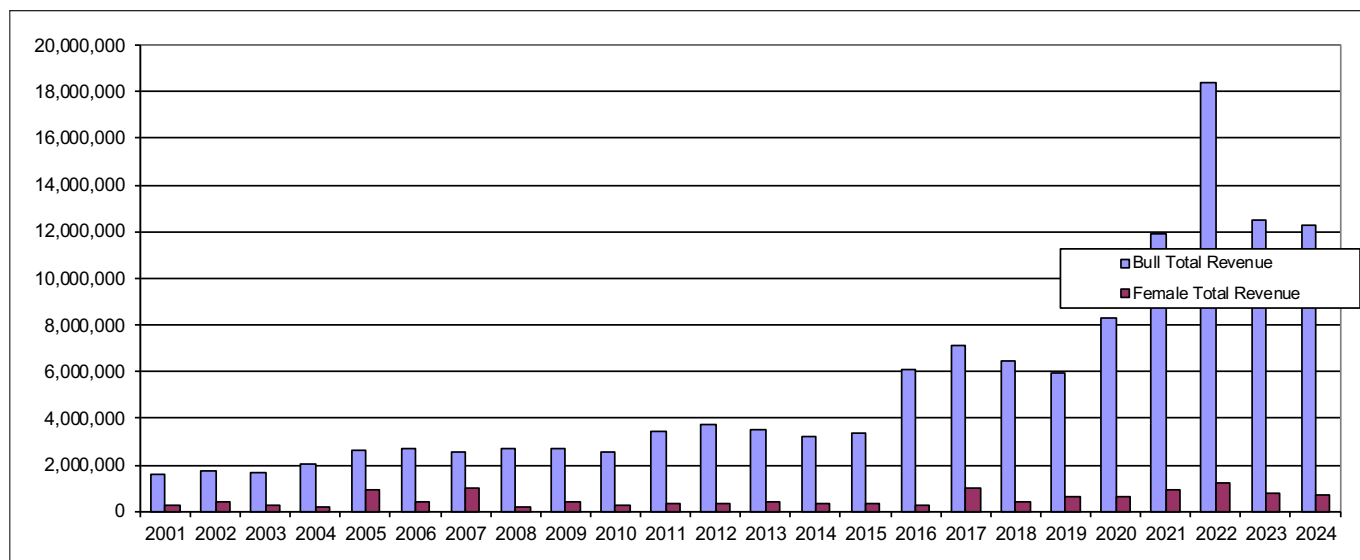
Tax planning might not be the most exciting aspect of running a beef cattle stud, but it's undeniably important. By taking advantage of primary production averaging and farm management deposits, you can create a more stable financial future for your operation. When paired with efficient tools like Xero, you'll be well-equipped to handle the complexities of your business. This allows you to focus on what you do best: raising quality cattle and building a successful operation. So, take the time to understand these tools and make them work for you. Your stud—and your wallet—will be better off for it!

 **BALDRY & CARR**
accounting for business & rural
(02) 6924 3604 | office@baldryandcarr.com.au | www.baldryandcarr.com.au
Business. Tax. Super. Audit... sorted!

SALE AVERAGES 2001-2024



TOTAL SALE REVENUE 2001-2024



SALE RESULTS: A SNEAK PEEK

GREAT SOUTHERN BLUE RIBBON BULL SALE (WA) - JANUARY 16TH

Top Price: \$14,500 with an average of \$7,384

Naracoopa sold 12/14 bulls to a top of \$14,500 for Lot 52, Naracoopa Trusty T033 and averaged \$7,384.

Inlet Views sold 4/6 bulls to a top of \$7,000 and averaged \$3,666.



Naracoopa Trusty T033

GRANGEBURN SIMMENTALS (VIC) - FEBRUARY 3RD

Top Price: \$12,500 (twice) with an average of \$7,472

18/19 bulls sold to a top of \$12,500 twice for Lots 8 & 13, Grangeburn Twilight Knight (pictured) and Grangeburn Taurus and averaged \$7,472. 6/9 females sold to a top of \$6,000 for Grangeburn Polly U40 and averaged \$3,750.



Grangeburn Twilight Knight

MT ARARAT SIMMENTALS (VIC) - FEBRUARY 4TH

Top Price: \$16,000 with an average of \$8,875

10/10 bulls sold to a top of \$16,000.



Yerwal Est Tycoon

YERWAL EST & MT MOONEY SIMMENTALS (SA) - FEBRUARY 7TH

4/9 Simmental bulls sold to \$17,000 for Lot 37, Yerwal Est Tycoon T007 and averaged \$11,000.

Mt Mooney Simmentals sold 3/3 bulls to an average of \$5,666 and topping the day with \$7,000 for Lot 47 Mt Mooney Triumph T049 to Westphal Nominees Pty Ltd.



Lakeside Titus T074

LAKESIDE SIMMENTALS (SA) - FEBRUARY 7TH

Top Price: \$11,000 with an average of \$6,625

12/20 bulls sold to a top of \$11,000 for Lot 1, Lakeside Titus and averaged \$6,625.



Woonallee Pear T245

WOONALLEE SIMMENTALS ONLINE FEMALE SALE (SA) - FEBRUARY 7TH

Top Price: \$11,500 with an average of \$7,018

34/34 females sold to \$11,500 for Lot 14, Woonallee Pear T245 and averaged \$7018. 7/7 semen packages sold to \$400/straw (KBHR Global J138) and averaged \$228/straw.



Woonallee Trojan

WOONALLEE SIMMENTALS (SA) - FEBRUARY 8TH

Top Price: \$40,000 with an average of \$12,153

110/110 bulls sold to a top of \$40,000 Lot 1, Woonallee Trojan, selling to MA Boers of Albury and averaged \$12,153.

SALE RESULTS: A SNEAK PEEK



Woonallee Ashante R339

TUGULAWA SIMMENTALS FEMALE SALE (SA) - FEBRUARY 9TH

Top Price: \$6,250

14/25 females sold to a top of \$6,250 for Lot 464, Woonallee Ashante R339, AI'd and PTIC to FSS Polled Hendrix, going to Invergordon, Vic. Ashante's buyer also purchased another PTIC cow for \$4,250 and 5 yearling traditional heifers to a top of \$3,250. Others went to Birrengurra, Shepparton, and Colac.



Topweight U52

TOPWEIGHT (WA) - FEBRUARY 12TH

Top Price: \$7,250 with an average of \$5,142

7/15 bulls sold to a top of \$7,250 for Lot 5, Topweight U056 and averaged \$5,142.



Eden Hills Terrance T216

FEBRUARY ALL BREEDS (QLD) - FEBRUARY 13TH

Top Price: \$13,000 with an average of \$5,359

39 Simmental (75%) averaged \$5,359 topping at \$13,000 for Lot 505, Eden Hills Terrance T216 selling to MF & E Hoffman, Wandoan, QLD. Six Simbrah averaged \$5333 (26%). Two Simmental composite averaged \$4000 (67%).



Brewer Beef Cowboy Cut T312

BREWER BEEF (VIC) - FEBRUARY 16TH

Top Price: \$14,500 with an average of \$7,046

26/27 sold to a top of \$14,500 for Lot 37 Brewer Beef Cowboy Cut T312 selling to Hazel Dell Simmentals, VIC, and averaged \$7,046.



Willandra Tantamount T035

WILLANDRA SIMMENTAL (WA) - FEBRUARY 20TH

Top Price: \$24,000 with an average of \$8,346

26/34 bulls sold to a top of \$24,000 for Lot 1, Willandra Tantamount T035 selling to Naracoopa Simmentals and averaged, \$8,346.



Bradford Red Labels T4

GINGIN BULL SALE - MARCH 7TH

Top Price: \$6,000 with an average of \$6,000

Bradford Cattle Co sold 1/1 to a top of \$6,000 for Bradford Red Labels T004.

SALE RESULTS: A SNEAK PEEK

BONNYDALE BLACK SIMMENTALS (WA) - MARCH 11TH

Top Price: \$41,000 with an average of \$10,400

65/76 bulls sold to a top of \$41,000 for Lot 2, Bonnydale Revenue U149 selling to Webb Black Simmentals and St Pauls Genetics and averaged \$10,400.



Bonnydale Revenue U149

NEXGEN SIMMENTALS (WA) - MARCH 18TH

Top Price: \$8,000 (four times) with an average of \$7,166

9/9 bulls sold to a top of \$8,000 four times and averaged \$7,166.



Nexgen Under The Influence U059

BLACK STUMP BULL SALE (QLD) - MARCH 19TH

Simmentals Top Price: \$12,000 with an average of \$7,222

18/21 to top at \$12,000 for Lot 51, Meldon Park T119. 1 of 5 #Simbrahs sold to a top of \$7,000 for Lot 65, Meldon Park T25.



Meldon Park T119

WALSA BRUNSWICK SUPREME BULL SALE (WA) - MARCH 20TH

Top Price: \$20,000 with an average of \$6,875

16/36 bulls sold to a top of \$20,000 for Lot 27, Mubarn Unbelievable and averaged \$6,875.



Mubarn Unbelievable

GB LIVESTOCK (NSW) - MARCH 22ND

Females Top Price: \$11,000 with an average of \$6,500

5/6 animals sold to a top of \$11,000 for Lot 6, GB Livestock Soda U111 and averaged \$6,500.



GB Livestock Soda U111

ALBANY MULTI BREED SALE (WA) - MARCH 26TH

Top Price: \$6,000 with an average of \$5,125

4/6 bulls sold to a top of \$6,000 for Lot 4, Stirling End T011 and averaged \$5,125.



Stirling End T011

SALE RESULTS: A SNEAK PEEK



BULLOCK HILLS (WA) - MARCH 27TH

Top Price: \$9,000 average of \$5,823

17/31 bulls sold to a top of \$9,000 for Lot 1, Bullockhills Thunder T73 and averaged \$5,823.



SLOPES AND ROLAND BLACKS (TAS) - APRIL 5TH

Top Price: \$9,500 average of \$6,700

KBV FEMALES OF THE FUTURE (QLD) - APRIL 16TH

Top Price: \$15,000 average of \$6,658

22/22 females sold to a top of \$15,500 for Lot 2, KBV Ta Dah and averaged \$6,658.



TENNYSONVALE SIMMENTALS (NSW) - MAY 31ST

Top Price: \$11,000 average of \$6,589 and Females Top \$10,000 average of \$4,653

28/36 Bulls sold to a Top Price of \$11,500, Lot 51 - Tennysonvale Tikardo, with an average price of \$6,589.

45/46 Females sold to a Top Price of \$10,000, Lot 2 - Tennysonvale Target, with an average price of \$4,653.



COOLIBAH SIMMENTALS (NSW) - JUNE 7TH

Top Price: \$17,000 average of \$8,222

9 of 11 bulls sold to a top of \$17,000 for Lot 1, Coolibah True Blue. 2 of 3 heifers sold to a top of \$4,500.



AGGROW (QLD) - JUNE 21ST

Simmentals Bulls Top Price: \$17,000, Simbrahs Top Price \$20,000

Simmentals - 56/57 to a top of 17000 twice for Lot 123, Elite Trickster T110 and Lot 143, Double K Tailormade T036 and averaged \$9,666.

Simbrahs - 4/4 to a top of \$20000 for Lot 187, Gowrie Troy (pictured) and averaged \$13,000.

SALE RESULTS: A SNEAK PEEK

SIMMENTAL NATIONAL SALE (NSW) - JUNE 28TH

Bulls Top Price: \$10,500

2/5 bulls sold to a top of \$10,500 for Lot 5 GB Livestock U-Haul and \$10,000 for Lot 1, Hartfield Titan.



GB Livestock U-Haul

BARANA SIMMENTALS (NSW) - JULY 5TH

Top Price: \$10,000 average of \$7,000

10/15 bulls sold for a top price of \$10,000 for Lot 3, Barana Trent T085, purchased by Kellie & Tony Dean and averaged \$7,000. Top priced female was \$6,000 for Lot 32, Bara Umina U37.



Barana Trent U037

CASINO ALL BREEDS BULL SALE (NSW) - JULY 27TH

Top Price: \$17,500 average of \$6,875

Top price went to Lot 84, Double K Striker for \$17,500 and averaged \$6,875. 6/9 females sold to a top of \$3,000 for Lot 176, a Clay Gully heifer.



Double K Striker

QUEENSLAND BULL SALE (QLD) - JULY 29TH

Top Price: \$18,000 average of \$6,578

83/103 Bulls sold to a top of \$18,000 for lot 56, Yerwal Est Tornado T305 and averaged \$6,578.



Yerwal Est Tornado

MALA-DAKI, JNI AND LUCKY CLOVER SIMMENTAL SALE (NSW) - AUGUST 1ST

Top Price: \$9,000 average of \$7,000

12 Simmental bulls sold for a top price of \$7,000 (Lot 8, Lucky Clover Augustus T006, purchased by Paul Ryan, Glanmire NSW) and averaged \$6,333.

3 SimAngus bulls sold for a top price of of \$9,000 (Lot 6, Mala-Daki Paratrooper T44, purchased by Yacandunda Investments, Collinsville QLD) and averaged \$7,666.



Mala-Daki Paratrooper T44

SALE RESULTS: A SNEAK PEEK



HOBBS LIVESTOCK BULL SALE (NSW) - AUGUST 14TH

Top Price: \$14,000 average of \$7,444

10/14 Simmental bulls sold to \$14,000 for Lot 3, Hobbs Livestock Uproar U & av. \$7,444.

6/7 Simmental heifers sold to \$6,000 (Lot 40. Hobbs Livestock Keepsake U28) & av. \$5,200.



WOONALLEE TAMWORTH SIMMENTAL SALE (NSW) - AUGUST 15TH

Top Price: \$26,000 average of \$9,843

50/50 bulls sold to \$26,000 for Lot 11, Woonallee Rendezvous T687 to Heart & Spade Simmentals and averaged \$9,843.



LUCRANA SIMMENTAL/SIMBRAH BULL SALE (QLD) - AUGUST 16TH

Top Price: \$18,000 average of \$11,314

70/70 bulls sold, topping at \$18,000 twice for Lot 2 (Torquay) and 3 (Tradesman - pictured) and averaging \$11,314.



FAIRVIEW BLACK SIMMENTALS SALE (QLD) - AUGUST 21ST

Top Price: \$19,000 average of \$8,174

44/44 Bulls sold to a top of \$20,000 for Lot 21 for \$20,000, purchased by Andromeda Cattle Co, Mungallala and averaging \$10,773.



CLAY GULLY INVITATIONAL BULL SALE (QLD) - AUGUST 26TH

Top Price: \$16,000 average of \$8,156

84/84 bulls sold to \$16,000 for Lot 29, Biarra Valley Tuqiri to J Gomersall, Goovigen QLD and averaging \$8,156.



BONNYDALE Q BULL SALE (QLD) - AUGUST 28TH

Top Price: \$30,000 average of \$8,088

46/50 bulls sold to a top of \$30,000 for Bonnydale Essential selling to J Litt of NSW.

SALE RESULTS: A SNEAK PEEK

EIDSVOLD SIMMENTAL & FLECKVIEH SALE (QLD) - AUGUST 31ST

Top Price: \$18,000 (twice) average of \$7,375

38/41 bulls sold to a top of \$18,000 for Silver Linings Teddy and averaged \$7,375. 2/4 females sold to a top of \$3,750 and averaged \$3,620.



Silver Linings Teddy

ELITE CATTLE CO'S BULL SALE (QLD) - SEPTEMBER 5TH

Top Price: \$36,000 average of \$15,750

48/48 bulls sold to a top of \$36,000 for Lot 37, Elite Under Wraps and averaged \$15,750.



Elite Under Wraps

WORMBETE BULL SALE (NSW) - SEPTEMBER 11TH

Top Price: \$16,000 average of \$8,112

32/41 bulls sold to \$16,000 for Lot 34, Wormbete Union Jack U121 to Koonaworra Simmentals and averaged \$8,112. 7/11 heifers sold to \$7,000 and averaged \$5,124.



Wormbete Union Jack

CASA TORO'S INVITATIONAL SALE (QLD) - SEPTEMBER 13TH

Top Price: \$35,000 average of \$12,787

47/49 bulls sold to a top of \$35,000 for Lot 1, Casa Toro Top Gear T44 to Joe and Felecity Streeter, Streeter Grazing and averaged \$12,787.



Casa Toro Top Gear

ST PAULS GENETICS (NSW) - SEPTEMBER 16TH

Top Price: \$25,000 average of \$9,150

10/13 Bulls sold to an average of \$9,150 to a top of \$25,000 for Lot 7 St Pauls Uhlan U436 to Huron Park Black Simmentals Injune, QLD 4454.

3/6 Embryo packages for an average of \$800/unit.



St Pauls Uhlan

VALLEY CREEK (NSW) - SEPTEMBER 21ST

Top Price: \$21,000 average of \$8,254

10/11 bulls sold to a top of \$21,000 for Lot 3, VC U40. 9/12 black heifers sold to a top of \$14,500 and 6/6 traditional heifers sold to a top of \$10,500.



VC U40

SALE RESULTS: A SNEAK PEEK



MELDON PARK SIMMENTAL SALE WITH INVITED VENDORS KBV SIMMENTALS & NAVILLUS PARK SIMMENTALS (QLD) - SEPTEMBER 24TH

Top Price: \$18,000 (twice) average of \$9,200

55/64 bulls sold to a top of \$18,000 twice for Lots 3 (pictured) and 4 and averaged \$9,200.

BARCALDINE SALE (QLD) - SEPTEMBER 27TH

Top Price: \$16,000 average of \$7,111

36/46 bulls sold to a top of \$16,000 for Lot 48, Savannah-K T003 and averaged \$7,111.



SHILOH DISPERSAL SALE (QLD) - OCTOBER 3RD

Top Price: \$11,000 average of \$5,625

18/22 females sold to a top of \$11,000 for Lot 3, Barana Storm and averaged \$5,625.

5/8 bulls sold to a top of \$6,500 for Lot 28, Shiiloh Unstopabul.



KARRAGARRA BULL SALE (QLD) - OCTOBER 4TH

Top Price: \$32,500 average of \$11,622

78/78 bulls sold to a top of \$32,500 for Lot 63, Karragarra Uranus selling to James and Emily Cochrane, Kendall Park Simmentals and averaged \$11,622.

ST PAULS FEMALE AND GENETICS SALE (NSW) - OCTOBER 28TH

Top Price: \$10,250 average of \$4,072

Cows - 18 of 22 sold to a top of \$8,500 and averaged \$4,430.

Yearling heifers - 9 of 10 sold to a top of \$10,250 and averaged \$4,072.

Embryo Packages (4 embryos per lot) - 8 of 10 lots sold to a top of \$4,000 (twice) to average \$3,124 per package (or \$781 per package).

Semen packages - 12 of 16 sold to a top of \$250 per straw and averaged \$49 per straw.





A NUTRIEN AG SOLUTIONS PARTNER

STUD SALES

**LIVE AUCTIONS & ONLINE SALES
BULLS, FEMALES & GENETICS
PRIVATE SALES | COMMERCIAL SALES
FEEDLOT SALES**



gdlrural.com.au



Mark Duthie 0448 016 950
Josh Heck 0409 732 676
Tony Dwyer 0427 589 437

Corey Evans 0427 233 999
Georgie Connor 0428 347 550
Simon Kinbacher 0427 735 620

BIG ENOUGH TO COUNT, *small enough to care*

MEMBERS' DIRECTORY

LIFE MEMBERS

TOM BAKER

PMB 52
MILLICENT SA 5280
P: 08 8734 3031
E: tbaker@bakergroup.com.au
WEE WOONALLEE

CHARLES COWCHER

246 KENNEDY ROAD
WILLIAMS WA 6391
P: 08 9885 6058
E: ccowcher@westnet.com.au
AJZ WILLANDRA

GARRY GILLET

LARA-LEIGH SIMMENTALS
38 FOREST ROAD SOUTH
LARA LAKE VIC 3212
P: 0412 017 660
E: garryg@aapt.net.au
GGJ LARA LEIGH

DR HANS GRASER

79 AMAROO ROAD
INVERGOWRIE NSW 2350
P: 02 6775 2035
E: hu.graser@bigpond.com
OHG

GINA RYAN

GLENVIEW DEL SIMMENTALS
67 JOYCES ROAD
GLENBURN VIC 3717
P: 03 5797 8334
RYA GLENVIEW DEL

PETER SPEERS

236/116 KARALTA ROAD
ERINA NSW 2250
P: 0408 203 006
E: pspeers@hotmail.com
FSB

PETER WENN

PINAROO HILLS SIMMENTAL STUD
PO BOX 30
BUNYIP VIC 3815
P: 0417 317 830 (Peter)
E: pinaroothills@hotmail.com
WCK PINAROO HILLS

FULL MEMBERS

NEW SOUTH WALES

JOHN & CORRINA ADAMS

89 CARRINGTON ROAD
LONDONDERRY NSW 2753
P: 02 4572 6590
E: corrinaadams@bigpond.com
CMA CMA

LUKE & NATASHA ADAMS

193 SPINKS ROAD
GLOSSODIA NSW 2756
P: 0400 834 619 TASH
E: lnalivestock@outlook.com.au
LNA LNA LIVESTOCK

JESSICA ADAMS

89 CARRINGTON ROAD
LONDONDERRY NSW 2753
P: 02 4572 6590
E: corrinaadams@bigpond.com
ZQJ HEART & SPADE

LINDESAY & JANET ALLAN

DIGBY
368 DIGBY LANE
CURLEWIS NSW 2381
P: 02 6744 1122
E: clayfieldstud@gmail.com
LIA NOANGA

NICHOLAS AZZOPARDI

2 NELLORE PLACE
NORTH NOWRA NSW 2541
P: 0423 417 602
E: nick.azzopardi1@gmail.com
ZNW WESTERN STAR

MITCH BAKER

PH PARTNERSHIP
PINE HILLS 265 PINE HILLS ROAD
WOOLBROOK NSW 2354
P: 0407 255 976
E: mitchbaker2011@hotmail.com
PHW PINE HILLS

IAN & CHERYL BALDRY

IVANHOE
297 HILLSIDE LANE
ILLABO NSW 2590
P: 02 6924 7215
E: tennysonvale@hotmail.com
BXN TENNYSONVALE

IAN BARNARD

68 CAPPER ST
TUMUT NSW 2720
P: 02 694 713 69
E: ianpennyb@gmail.com
IBS BARNJAPI

BRENDEN & SARAH BATES

135 HALLS ROAD
DARTBROOK NSW 2336
P: 0423 145 605
E: brendenbates@gmail.com
BBW WOODLANDS

DARREN & LISA BEAUMONT

595 PEAKS ROAD
DORRIGO NSW 2453
P: 02 6657 4124
E: dj.beaumont@bigpond.com
LOW LOWBEAU

BENALLA STUD GRAZING

MIRANEE
312 MIRANEE ROAD
GUNDY NSW 2337
P: 07 4741 1547
E: benallastud@gmail.com
DNS BENALLA

JESSE BEZWARCHNY

111 HOLDENS LANE
HANNAM VALE NSW 2443
P: 02 6556 7692
E: jesse.bezwarchny@yahoo.com.au
ZJJ 2J'S

GRAHAM AND JENNIFER BULLEN

880 TOPS ROAD
LOGIE
NOWENDOC NSW 2354
P: 0429 231 287
E: jennyabullen@gmail.com
GJB LOGIE SIMMENTALS

GRANT BULLOCH

115 BLACK SALLEE LANE
BRAIDWOOD NSW 2622
P: 0477 268 935
E: gblivestock21@gmail.com
GBL GB LIVESTOCK

JOHN & ANGELA CAREY & DITRICH

300 OLD COAST ROAD
DORRIGO NSW 2453
P: 0428 286 017
E: romeoslave@gmail.com
OPS OLIVIA PARK

SIOBHAN CATLING

326 DOYLES CK ROAD
DOYLES CREEK NSW 2330
P: 0412 963 454
E: standgate@icloud.com
SWC SWC

JOHN CLAYDON

260A SPRINGFIELD ROAD
MOLE RIVER NSW 2372
P: 0427 234 047
E: johnclaydon654@gmail.com
CLY MOLE RIVER

PETER & CHARMAINE COOK

BARANA
COOLAH NSW 2843
P: 0427 775 233
E: barana@bigpond.com
PTC BARANA

BILL CORNELL

FW & BS CORNELL
31 THE GROVE
THURGOONA NSW 2640
P: 0428 293 498
E: billcornell@bigpond.com
SPG ST PAULS

SALLY COULTON

422 FLOODS TANK ROAD
GRAVESEND NSW 2401
P: 0438 276 399
E: basfarming@bigpond.com
COU CLAREMONT

BRIAN CULLIS

PO BOX 107
BERMAGUI NSW 2546
P: 02 6947 9448
E: bcullis@uow.edu.au
ZTT MAYBTHISTIME

JOHN & JACK DAWSON

220 STRONGS ROAD
JASPERS BRUSH NSW 2535
P: 02 4448 6040
E: jondede@bigpond.com
DCR DUNCRIEFF

GRAHAM DUPOND

GNA BLACK SIMMENTALS
MOOREFIELDS 847 FULLERTON ROAD
FULLERTON NSW 2583
P: 02 4653 1277
E: graham@dupondindustries.com.au
GNA GNA SIMMENTALS

RICHARD FITZGERALD

ALKOOMIE
678 CRAWNEY ROAD
NUNDLE NSW 2340
P: 0468 938 767
E: williamfitzgerald71@yahoo.com
KUN KUNDERANG

KATHY GLEESON

1400 COALMINE ROAD
ASHFORD NSW 2361
P: 0487 421 437
E: riverbend2361@bigpond.com
GLE RIVERBEND

GOLDSTAR GENETICS

393 OLD DUBBO ROAD
COONAMBLE NSW 2829
P: 0428 146 665
E: james.hannah@goldstargenetics.com.au
GOL GOLDSTAR

EMILY GOUGH

360 UPPER WARRELL CK ROAD
MACKSVILLE NSW 2447
P: 02 6569 3182
E: goughinc@bigpond.net.au
ZGE SHWE ROSE

TOM AND ALICE GRANLEESE

C/- JIZZY GENETICS
107 CASSONS CREEK ROAD
LAVADIA NSW 2462
P: 0432 339 008
E: tgranleese@gmail.com
GTA DEEP CREEK

SIMON & IAN CARROLL HALE

4 ROTHERWOOD ROAD
LAKE BATHURST NSW 2580
P: 0438 042 405
E: simon.hale@bigpond.com
SBS SBS

J & M HANNAH

259 MERRYGOEN ROAD
MERRYGOEN NSW 2831
P: 0488 595 992
E: jmhannah7219@gmail.com
MMM GLENANNA

JASON HARRINGTON

3055 BUNNAN ROAD
BUNNAN NSW 2337
P: 0460 716 153
E: jcrural@outlook.com
JCR K4

ANDREW HAVADJIA

149 TANNERY ROAD
CAMBEWARRA NSW 2540
P: 0418 210 304
E: admin@nowravets.com
HLY HOLLYHILL

DA & AT HOBBS

143 WHITE FLAT ROAD
MOLONG NSW 2866
P: 02 6366 8378
E: dahobbs@bigpond.com
HOB ROUND-EM-UP

STUART HOBBS

ROSEHILL
33 BURGESS ROAD
GARRA NSW 2866
P: 02 6366 8378
E: hobbslivestock17@gmail.com
SHL HOBBS LIVESTOCK

JOHN & NICOLE HOPKINS

ALLAWAH
340 ALLAWAH ROAD
ILLABO NSW 2590
P: 0427 102 748
E: hopkinspastoral@bigpond.com
AGO WORMBETE

CHRIS & ASHLEIGH ICKINGER

HERLO PARK SIMMENTALS
178 KINGSHILL ROAD
MULGOA NSW 2745
P: 0434 216 525
E: billkimash@hotmail.com
ZKX HERLO PARK

JENNIFER IMPEY

CORELLA
1654 CORELLA ROAD
MANILLA NSW 2346
P: 0437 997 974
E: jncattleco1@gmail.com
JNI JN CATTLE CO

JASON & JACQUELINE IMPEY

CORELLA
1654 CORELLA ROAD
MANILLA NSW 2346
P: 0428 320 606
E: simmental@mala-daki.com
ZIJ MALA-DAKI

JESSICA & DAVID MCRAE IMPEY

CORELLA
1654 CORELLA ROAD
MANILLA NSW 2346
P: 0437 369 421
E: lcsimmentals@gmail.com
ZJM LUCKY CLOVER

ALLAN JARRETT

ALLAN ALYSON & LACHLAN
JARRETT
45 GREENPIGEON ROAD
KYOGLE NSW 2474
P: ALLAN: 0427 331 204
E: jarravalepastoral@bigpond.com
JRV JARRAVAL

KNOX FARMS

JEFF KNOX
PO BOX 8
CROOKWELL NSW 2583
P: 0414 611 414
NOX KNOX

SANDRA LANG-SCHILG

BYWONG PARK
URANA ROAD
BURRUMBUTTOCK NSW 2642
P: 02 6029 3275
E: sandra.schilg@bigpond.com
BYW BYWONG PARK

SHANNON LAWLOR

AUSBRED
2 TIERNEY ROAD
KURMOND NSW 2757
P: 02 4573 1052
E: slawlor@iahp.com.au
ZLX AUSBRED

JAMES LITT

69 MCCLAUGHLIN STREET
CUMNOCK NSW 2867
P: 0418 893 986
E: jlitt@awn.net
JTL LITT

JESSICA LITTLER

600 BOOMEY LANE
BOOMEY NSW 2866
P: 0466 032 389
E: jmruralco@gmail.com
SLP RAFTER L LIVESTOCK

BRIONY LOOKER

DUNOON
4075 BOOROLONG ROAD
ARMIDALE NSW 2350
P: 02 6732 2254
E: briony_looker@yahoo.com
ZOB B.A.L.

GUY MARTIN

1908 RHYANNA ROAD
MYRTLEVILLE NSW 2580
P: 0427 622 404
E: 0427 622 404
GSM NEWLANDS

LINDA MARTIN

SIXPENCE PARK
NEW ENGLAND HIGHWAY
TENTERFIELD NSW 2372
P: 0404 004 065
E: sixpencepark@live.com.au
SXP SIXPENCE PARK

B W & M G MCCOLL

7R JONES CREEK ROAD
DUBBO NSW 2830
P: 0429 750 590
E: bruce@daraabah.com.au
DBH DARAABAH

GORDON & DEBRA MCQUEEN

465 LYNCHES CREEK ROAD
KYOGLE NSW 2474
P: 0428 588 521
E: gkanddmcqueen@bigpond.com
GDM WILLOW GLEN

AMY MCRAE

PO BOX 17
BOWRAVILLE NSW 2449
P: 0438 810 977
E: bellevuesimmentals@outlook.com
BEL BELLEVUE

NATHAN MIDDLEBROOK

WIRRAIRRA
484 CRAVEN CREEK
VIA GLOUCESTER NSW 2422
P: 02 6558 7525
E: nmiddlebrook@hotmail.com
CCK CRAVEN CREEK

TAYLA MILLER

CARINYA
NEW ENGLAND HIGHWAY
PARKVILLE NSW 2337
P: 0427209073
E: taylamiller161@hotmail.com
TAM BLUE GENE

ROSS MITCHELL

ILLAWONG
660 HALCROWS ROAD
CATTAI NSW 2756
P: 02 4572 8417
E: rmitchell60@bigpond.com
AYR ILLAWONG

MKR FAMILY PARTNERSHIP

C/- KATIE TULLY
9530 SUMMERLAND WAY
SHANNON BROOK NSW 2470
P: 0477 862 904
E: kamjrobinson@gmail.com
MKR MKR

STUART & SAMANTHA MOECK

SYLVIA VALE
681 SYLVIA VALE ROAD
BINDA NSW 2583
P: 0419 465 242
E: vcsimmentals@yahoo.com.au
ZMJ VC

MADISON & SANDY MORGAN

COOLIBAH
BONNIEVIEW 297 OLD COAST RD
DORRIGO NSW 2453
P: 02 6779 1107
E: coolibah07@bigpond.com
ZVV COOLIBAH

KEITH & HELEN MORN

PACIFIC HIGHWAY 2027
CLYBUCCA NSW 2440
P: 02 6565 0173
E:
MKH MORNING

PAUL MUNRO

1 AUCKRAM ROAD
MCKEES HILL NSW 2480
P: 0428 601 568
E: Paul.R.Munro@outlook.com
BOJ BOJANGLES

MURRAY & NICOLE NICHOLLS

59 ROSEBERRY CREEK ROAD
KYOGLE NSW 2474
P: 0427 364 155
E: mn.nicholls@bigpond.com
TOO TOOKAWHILE

ADRIAN O'BRIEN

AVONLYNN
MERRI MERIC RD
HENTY NSW 2658
P: 0427 351 773
E: adrianobrien@agnvet.com.au
LYB LONG VALLEY

JESSICA O'CONNELL

PO BOX 27
BERRY NSW 2535
P: 02 4464 2702
ZKG KARAGUNDI

PAULA PALMER
WONGALEA
CASSILIS NSW 2329
P: 02 6376 4215
E: palmsrox@gmail.com
PPA WONDoola

COURTNEY PALMER
WARRAH DONGA
COOBA BULGA ROAD
CASSILIS NSW 2329
P: 02 6376 4215
E: courtney_palmer93@hotmail.com
ZWC WONGALEA

DARRYL & CHARMAINE PATTERSON
PO BOX 18
BILLINUDGEL NSW 2483
P: 0409 785 104
E: epicclass@hotmail.com
GDC GLENNVALE

RAY PEPPER
441B COMERONG ISLAND ROAD
NUMBAA NSW 2540
P: 0412 817 740
E: brentpepper@y7mail.com
PEP COOLAMOUNT

PAUL PHILLIPS
1367 JERRARA ROAD
BUNGONIA NSW 2580
P: 0400 701 125
E: paulphillips217@bigpond.com
CFS CAMPFIRE

TAYLAH PHILLIS
267 SMITHS LANE
SPRINGDALE NSW 2666
P: 0400 164 280
E: taylahp97@outlook.com
POA OAKLEIGH

BRUCE & GEOFF SON POWELL
YALLAMBEE
MURRINGO NSW 2586
P: 02 6384 6378
E: gs_powell@bigpond.com
BHU WANNAWILLA

ALEX ROBSON
GLISTER PTY LTD
ROSEVALE
ATTUNGA NSW 2345
P: 02 6761 2686
E: strathleigh2@bigpond.com
STR STRATHLEIGH

ANTHONY SIMONETTA
VILLA 2
121 RABY STREET
LEPPINGTON NSW 2179
P: 0424 426 224
E: anthony@vmccorp.com.au
HFS HARTFIELD

JAMIE SMITH
763 UPPER MOLE RIVER RD
MOLE RIVER NSW 2372
P: 0437 282 758
E: wynella@outlook.com
JSM OPTIMUM

TAFE NSW RICHMOND COLLEGE
CORNER BLACKTOWN ROAD AND
CAMPUS DRIVE
RICHMOND NSW 2753
P: 02 7921 7475
E: karen.pracey1@tafensw.edu.au
TFE TAFE NSW

JIM TICKLE
PO BOX 5
DUNGOG NSW 2420
P: 02 4992 1980
E: tickles@activ8.net.au
JTK SUGARLOAF

COLIN & LINETTE TINK
81R BURRAWAY ROAD
DUBBO NSW 2830
P: 0408 638 102
E: btbrahman@gmail.com
BCT CL

KAYE MOBBS TRENT MINNETT
MONJEWEL
1730 DELUNGRA ROAD
BINGARA NSW 2404
P: 0499 996 491
E: kayeminnett@gmail.com
KTM STARLIGHT

KIM USHER
415 BOOROLONG ROAD
ARMIDALE NSW 2350
P: 0408 073 427
E: kusher@une.edu.au
JSK JSK

ALANA WADE & KAIN RAFFERTY
PO BOX 463
GULGONG NSW 2852
P: 0478 151 697
E: raffertypastoral@outlook.com
RPC RPC

TREVOR & TRACEY WELLS
RIVERBROOK
348 GLENDON LANE
GLENDON NSW 2330
P: 02 6574 1392
E: trevellsis@gmail.com
TTW RIVERBROOK

RICHARD WILKINSON
1260 THE NORTHERN ROAD
BRINGELLY NSW 2556
P: 0413 581 098
E: rjw-settler@outlook.com.au
RWS SETTLER

GEORGE & GEORGIA WRAGGE
AYR
WALLINGTON ROAD
SCONE NSW 2337
P: 0419 014 754
E: tullayr@gmail.com
ZGW TULLAYR

QUEENSLAND

ELAINE ALMOND
14/38 LANDERSHUTE ROAD
PALMWOODS QLD 4555
P: 0406 078 091
E: bealmond@bigpond.com
FET SWINBURNE

TREVOR ANDERSEN
TRINITY VALE
PO BOX 956
KINGAROOY QLD 4610
P: 0407 296 626
E: trinityvale@yahoo.com.au
TVA TRINITY VALE

AUGUST BECKMANN
1109 MOUNT KENT BOUNDARY ROAD
FELTON QLD 4358
P: 0429 421 546
E: cliffy82@hotmail.com
AFB AUGAFALA

INTROVIGNE GRAZING CO & JACOB BERGHOFER
1343 BARAMBA ROAD
MOFFATDALE QLD 4605
P: 0429 622 809 (EMMA)
E: springvale2@bigpond.com
BQD BONNYDALE Q

JO BERRIE
325 HINDS ROAD
BAN BAN SPRINGS QLD 4625
P: 0400 750 041
E: joanne.mather@health.qld.gov.au
JOB SWEETHOLME

DAVID BLAKE
161 TED MENGEL ROAD
NOBBY QLD 4360
P: 0418 878 028
E: shiiloh@outlook.com
DAB SHILOH

PAUL & LESLEY BLIGH
1172 ALBERTA ROAD
BARALABA QLD 4702
P: 0473 539 230
E: 0473539230
BLI B'N DIAMONDS

DOUG & JAN BRADSHAW
2131 RED RANGE ROAD
WANDOAN QLD 4419
P: 0438278106
E: bluedogsimmentals@hotmail.com
DOG BLUE DOG

CAMELOCK RURAL
CARELLA
AUGATHELLA QLD 4477
P: 07 4654 9157
E: bec@camelockrural.com.au
CRT CAMELOCK

HEIDI CHRISTIE
1878 MOUNT STUART ROAD
MOUNT STUART QLD 4717
P: 0492022600
E: heidichristie@outlook.com
SHC SHANWOOD

RAY CLEWS
1789 ROSSMOYA ROAD
ROSSMOYA QLD 4702
P: 07 4934 3284
E: clewsfarming@bigpond.com
RAC SLATEWOOD

HILLVIEW CATTLE CO
PO BOX 1
CLERMONT QLD 4721
P: 0429 706 720
E: snfinger@bigpond.com
SNF GLENPRAIRIE

EDGEWATER FARMING CO PTY LTD
C/- RACHEL BLACK
54 DARLEY CROSSING ROAD
KUNIOON QLD 4615
P: 07 4164 7182
E: mandrblack@bigpond.com
EWC EDGEWATER

JAMES COCHRANE
KENDALL PARK
172 CARLSON ROAD
COLES CREEK QLD 4570
P: 0438 843 166
E: kendall.park.simmentals@gmail.com
SKP KENDALL PARK

MITCHELL COLE
BULLOCK SWAMP
10 ERIK DEN ROAD
RAVENSHOE QLD 4888
P: 07 4097 6615
E: lapunyah676@gmail.com
LAP LAPUNYAH

APPLETON CATTLE COMPANY PTY LTD
YARMINA STATION
CHARTERS TOWERS QLD 4820
P: 07 4983 5287
E: zabby@appletoncattleco.com.au
ACC ACC

KARINA & KARLY CRISP
208 LODE CREEK ROAD
SUGARLOAF
VIA STANTHORPE QLD 4380
P: 0417 197 280
E: kardelpark@gmail.com
KKC DOUBLE K

TRACEY CROUCH
CANNON DEE
M/S 1448
CHINCHILLA QLD 4413
P: 07 4665 5119
E: cannon.dee@bigpond.com
KNT CANNON DEE

JOHN & TARA DUMMA
EMOH RUO
MAY DOWNS-CARFAX ROAD
MIDDLEMOUNT QLD 4746
P: 07 4987 3034
E: dumma10@bigpond.com
JTD SUMMA

ELITE CATTLE CO
MURWOLLOCK
MEANDARRA QLD 4422
P: 0433 333 805
E: info@elitecattleco.com.au
ECC ELITE

MEGAN FOGG
10 BLACKJACK CREEK RD
TOOGOO LAHAW QLD 4313
P: 0427 200 689
E: mgloag1@hotmail.com
ZGO KOONAWORRA

DAVID & THERESA FRENCH
MALLARDALE
MS 181
PITTSWORTH QLD 4356
P: 07 4693 1556
E: dtfrench@bigpond.com
DTF MALLARDALE

IAN & ERIN GOODWIN
KINGSTON
10500 CLERMONT-ALPHA ROAD
ALPHA QLD 4724
P: 0429 723 626
E: kingston10500@outlook.com
KGC KINGSTON

SAVANNAH GOODY
904 MONAL ROAD
MONTQ QLD 4630
P: 0457 226 566
E: savannahgoody01@gmail.com
ZWK SGS SIMMENTAL

GOWRIE SIMMENTALS
ALMA PO BOX 78
BELL QLD 4408
P: 0458 888 976
E: gowriesimmentals@gmail.com
MRA GOWRIE

CRAIG & TRUDY HAMPSON
T/A HAMPSON GRAZING
34 SCRUBBY MOUNTAIN ROAD
MONTQ QLD 4630
P: 07 4167 8137
E: hampsongrazing@outlook.com
CTH SPRINGFIELD

DAVID & DIANNE HOOD
KIRKTON
RAVENSWOOD QLD 4816
P: 0427 703 320
E: diannehood@bigpond.com
DDJ KIRKTON

BRAYDAN & JESSICA HOOPER
PO BOX 2
ST GEORGE QLD 4487
P: 0419 661 051
E: braydan1995@bigpond.com
HOO JB

TONY HORVATH
FAIRVIEW
461 REDFORD ROAD
MUNGALLALA QLD 4467
P: 0408 612 666
E: fairviewblacksimmentals@gmail.com
FVS FAIRVIEW

ADAM & LAURA HUMPHREY
14784 TUMBAR ROAD
JERICHO QLD 4728
P: 0448 362 911
E: ahumphrey93@hotmail.com
ANL 3HG SIMBRAHS

JUSTIN & CLARE HUMPHREYS
COLROY
2007 WASHPOOL ROAD
INJUNE QLD 4454
P: 0428 261 163
E: highland73@bigpond.com
JCH HURON PARK

CLIFFORD JENSEN
15 WIXONS ROAD
LAKESIDE QLD 4621
P: 07 4127 1153
E: honeywood@activ8.net.au
4CD LAURVALE

JASON JOHNSTON
30 STAVE ROAD
OBI OBI QLD 4574
P: 0427 460 161
E: craigleadroughtmasters@hotmail.com
NVP NAVILLUS PARK

TONY & TAJ JONES
LOU LOU PARK
JERICHO QLD 4728
P: 07 4651 0588
E: louloupark1@gmail.com
TTL TATLOU

SCOTT & TAWNIE KELEHER
245 WYREEMA-ATHOL ROAD
TOOWOOMBA QLD 4350
P: 0421 659 268
E: scott.keleher@bigpond.com
STK FINALEE

MATT KIRK
TICOPA STATION
MUNDUBBERA QLD 4626
P: 0427 617 334
E: lachlanstephaniekirk@outlook.com
TYC TYCOBA

DALLAS KROPP
PO BOX 18313
CLIFFORD GARDENS QLD 4350
P: 0439 428 823
E: dallas@daltransbulkhaulage.com.au
DGK DALLAS RANCH

ROB & VIV LAYCOCK
CLAY GULLY SIMMENTALS
KIPPER
VIA ESK QLD 4312
P: 07 5424 1207
E: claygully@gmail.com
BRD CLAY GULLY

PAUL LAYCOCK
5650 BRISBANE VALLEY HIGHWAY
ESK QLD 4312
P: 0428 094 456
E: stephanie@hclivestocksupplements.com.au
HCL HIGH COUNTRY

GARETH LAYCOCK
28 BROUGH COURT
ESK QLD 4312
P: 0430 719 991
E: biarravalley@gmail.com
ZGK BIARRA VALLEY

ABE & AMY LEOV
603 SPRING CREEK ROAD
SPRING CREEK QLD 4361
P: 0425 615 414
E: aaleovco@hotmail.com
DAL AA

DON LOUIS
NANGUR SIMMENTALS
5781 BURNETT HWY
GOOMERI QLD 4601
P: 07 4168 4241
E: nangursimmentals@outlook.com
LOD NANGUR

MATTHEW & TANIA LUKRITZ
17 COAL CREEK ROAD
ESK QLD 4312
P: 07 5424 1757
E: orangevilla1@bigpond.com
ZOV COAL CREEK

MALANDA STATE HIGH SCHOOL
AG DEPT
PO BO 1020
MALANDA QLD 4885
P: 07 4096 7111
E: dkilp9@eq.edu.au
MAL MALANDA STATE HIGH

STEVEN MANWILL
C/- STEVEN MANWILL
UNIT 1109 19 DESHON STREET
WOOLLOONGABBA QLD 4102
P: 0416 229 171
E: smanwill@pharosinvestments.com.au
LSN LONE STATION

MELEEKA MCGREGOR
274 TUDOR VALLEY ROAD
ALLORA QLD 4462
P: 0427 891 005
E: woodlawnqhstud@gmail.com
MEE WOODLAWN

ANDREW MOORE
LAGOON FLAT
RIVERTON ROAD
TEXAS QLD 4385
P: 0428 535 154
E: andrew.moorefarms@bigpond.com
JJM LUCRANA

CALLUM MURRAY
1922 MEANDARRA-TALWOOD ROAD
MEANDARRA QLD 4422
P: 0437 636 831
E: yambutta@gmail.com
CAL YAMBUTTA PAST CO

JANET NEWLANDS
107 HENDRIE ROAD
UPPER PILTON QLD 4361
P: 0427 931 927
E: newlandsjanet@bigpond.com
PHD EDEN HILLS

KM PARKER & MJ PEARCE
114 DEE ST
KOONGAL QLD 4716
P: 0476 693 449
E: jamaccattleco@gmail.com
JAA JAMAC

JN & CA POCOCK & T & J ISEPPI
68 CLARENDON ROAD
LOWOOD QLD 4311
P: 07 5426 1329
E: jc.pocock@bigpond.com
JCP ELLENDAL

IVAN & HELEN PRICE
406 NOORINDOO ROAD
SURAT QLD 4417
P: 0428 265 031
E: moongoolcharolais@bigpond.com.au
DP2 MOONGOOL

PETER & TONI RAUCHLE
SPRINGSIDE SIMMENTALS
357 IRONGATE ROAD
SPRINGSIDE QLD 4356
P: 07 4693 8282
E: springside@skymesh.com.au
PTR SPRINGSIDE

BRETT RIDOLFI
50 NYLETTA ROAD
SILKWOOD QLD 4856
P: 0429 652 008
E: brett.ridolfi1@gmail.com
BRR HAYELTON

BRAD AND HAYLEY ROBINSON
438 AUBIGNY-CROSSHILL RD
AUBIGNY QLD 4401
P: 0439 337 925
E: hayley@robinsonslivestock.com
QNH ROBINSONS

MARTY ROWLANDS
229 TARPULIN ROAD
DJUAN QLD 4352
P: 0439208732
E: r_marty@gmail.com
ZKV K.B.V.

RODNEY & ELISABETH SKENE
3246 DALBY CECIL PLAINS ROAD
CECIL PLAINS QLD 4407
P: 0428 717 847
E: info@meldonparksimmentals.com.au
CCR MELDON PARK

WILLIAM SKENE
3246 DALBY CECIL PLAINS ROAD
CECIL PLAINS QLD 4407
P: 0408 680 361
E: meldonpark@optusnet.com.au
WMP MELDON PARK W

REBECCA SKENE & BEN PASSMORE
266 PASSMORE ROAD
ELLANGOWAN QLD 4361
P: 0437 680 360
E: becskene11@gmail.com
MRB MELDON PARK RB

TOM SLAUGHTER
ATTN TOM SLAUGHTER
GPO BOX 132
BRISBANE QLD 4001
P: 07 3041 2800
E: austrex@austrex.com.au
STO AUSTREX

MARK SMOOTHY
20 BLUEWATER DRIVE
ELLIOT HEADS QLD 4670
P:
E: rigpigsMOOTHY@hotmail.com
MSS ELGIN VALE

CODY SMOOTHY
574 UPPER PINELANDS ROAD
UPPER PINELANDS QLD 4355
P: 0429 292 979
E: ca-smoothy@hotmail.com
VHL VINE HILL

TUNGAMAH FARMING PTY LTD
HEREWARD STATION
MORELLA QLD 4730
P: 07 4658 9186
E: admin@herewardbeef.com.au
HWD HEREWARD

MAL WALKER
601 WOODVIEW SCHOOL ROAD
AUBIGNY QLD 4401
P: 0427 571 919
E: mal.walker1@bigpond.com
YNT Y-NOT

SCOTT & CLAIRE YORK
70 JACKSON WANDOAN ROAD
JACKSON QLD 4426
P: 0427 274 410
E: scyork@bigpond.com
YSC CASA TORO

YORK CATTLE CO
PO BOX 2220
EMERALD QLD 4720
P: 0458 823 931
E: karragarra@yorkmail.com.au
YCC KARRAGARRA

SOUTH AUSTRALIA

GARY & JOY ALLEN

PO BOX 516
MOUNT GAMBIER SA 5290
P: 08 8725 7835
E: tugulawa9@bigpond.com.au
GAA TUGULAWA

THOMAS & LIZZY BAKER

PMB 52
MILLICENT SA 5280
P: 08 8734 3031
E: tbaker@bakergroup.com.au
WEE WOONALLEE

SHIRLEY BARKER

CAITHNESS
PO BOX 133
MOUNT BARKER SA 5251
P: 08 8391 1011
ALT BOKARA

MASON GALPIN & BEN BROOKSBY

1371 CASTERTON ROAD
PENOLA SA 5277
P: 0437 527 606
E: ben@nakedfarmer.org
GBE GB SIMMENTALS

ARABELLA BRANSON

PO BOX 1257
UNLEY SA 5061
P: 08 8215 0077
E: abranson@arabellabranson.com.au
ALV CANTARADOWNS

LEWIS BRUGGEMANN

PO BOX 102
MALLALA SA 5502
P: 08 8527 2538
E: lewis.bruggemann@thomasfoods.com
ZGB GLENTAL

REGAN BUROW

199 LAWREYS ROAD
PMB 73
NARACOORTE SA 5271
P: 08 8769 6168
E: regan@yerwalestate.com
AMO YERWAL EST

SARAH BURPEE

PO BOX 624
MEADOWS SA 5021
P: 0458 320 784
E: sarah.draytonpark@gmail.com
SLB DRAYTON PARK

CARALMA PASTORAL CO

C/- MARK LAMBORN
PO BOX 127
WISTOW SA 5153
P: 0419 948 298
E: caralmapastoralcompany@gmail.com
CML CARALMA

NIKOLA MITCH CARR & TEMPLEMAN

31 WILHELM ROAD
MOUNT TORRENS SA 5244
P: 0439 601 112
E: carrnikola@gmail.com
CTS SHEOAK

TIM & LISE CARTLEDGE TIM & HENRY CARTLEDGE

PO BOX 17
MENINGIE SA 5264
P: 08 8575 5021
E: info@lcsblacks.com.au
LCS LANCASTER

BRAD CREEK

PO BOX 3712
MT GAMBIER SA 5290
P: 0400 265 319
E: bpccreek@yahoo.com.au
ZKR SIX CREEKS

RICHARD & WENDY HODGE

PO BOX 1020
GOOLWA SA 5214
P: 08 8555 4097
E: wendyhodge@bigpond.com
HRH WATERFRONT

LILY & DONG LILY & DONG CATTLE STUD PTY LTD

29 BOWYERS WAY ROAD
ROBE SA 5276
P: 0406 256 216
E: zz029326@aliyun.com
LDC LAKESIDE

LLEWELLYN FAMILY

PO BOX 240
KEITH SA 5267
P: 0417 830 352
E: northwindfarming18@gmail.com
LCC JILLANGOLO

P & MC MAGLIERI

PO BOX 35
MCLAREN VALE SA 5171
P: 08 8323 8648
E: p.maglieri@icloud.com
NAW SKILLOGALEE

BK & FM MILLER

PO BOX 78
SPRINGTOWN SA 5235
P: 0477 284 284
E: brentonmiller@bigpond.com
JKM CROWN M

QJ & RJ MOONEY

PO BOX 293
TINTINARA SA 5266
P: 0438011800
E: qjrj@mtmooney.com.au
ZOM MT MOONEY

GRANTLEY & VICKI MULLER

PO BOX 8121
MOUNT GAMBIER EAST SA 5291
P: 0428 572 354
E: vjmuller@bigpond.com
GCM RELUM FARMS

ASHLEY NESS

PO BOX 65
PARNDANA
KANGAROO ISLAND SA 5220
P: 08 8559 5213
E: timbercreek@skymesh.com.au
NAA SEDDON

MATT NICOLLE

PO BOX 493
KEITH SA 5267
P: 0488 145 433
E: mw.r.nicoll@bigpond.com
MRN BT SIMMENTALS

ASHLEY PACITTI

1061 HINDMARSH TIERS ROAD
HINDMARSH TIERS SA 5202
P: 0433 078 341
E: hails.84@hotmail.com
PAC GRACEWOOD

ANNIE PALMER

LIMITLESS CATTLE CO
PO BOX 374
MT COMPASS SA 5210
P: 0429 810 095
E: sales@showcattlesuppliesaustralia.com.au
ZXA LIMITLESS

DARRYN & SAMANTHA ROTHE

TOLHVERRAE
C/- POST OFFICE
PADTHAWAY SA 5271
P: 08 8765 5197
E: rothe.17@outlook.com
DSR TOLHVERRAE

SARAH TRURAN

PO BOX 769
MYPONGA SA 5202
P: 0411 955 576 (Sarah)
E: savannahsimbrahs@gmail.com;
vpccattle@gmail.com
SCC SAVANNAH

MARTHA VALKENBURG

PO BOX 520
MT BARKER SA 5251
P: 0407 780 888
E: martha@lmag.com.au
MVA SIMMY

STEPHEN & ROBYN VIVIAN

RUNDLE ROAD
COWIRRA SA 5238
P: 08 8569 2266
E: office@knockando.com.au
SBV KNOCKANDO

PHIL WEBB

6 FATCHEN COURT
GREENWITH SA 5125
P: 0419 813 574
E: plwebb13@bigpond.com
JAW HIGH FIVE

TJ & MJ WHITTLESEA

LOT 5203 MAIN SOUTH RD
MYPONGA SA 5202
P: 0408 070 097
E: whittleseas@bigpond.com
TMW CHARLOMINE

CRAIG WOODING

293 CHARCUTT ROAD
PENOLA SA 5277
P: 08 8736 3181
E: snow6@live.com
CLW MAGPIE PARK

TASMANIA

HAYLEE BENNETT

796 PRESTON ROAD
NORTH MOTTON TAS 7315
P: 0400 640 755
E: hales38@icloud.com
JBH JBH SIMMENTALS

MICHAEL FRANKCOMBE

GREEN SLOPES
914 WEST KENTISH ROAD
SHEFFIELD TAS 7306
P: 0438 121 868
E: slopesimm@gmail.com
MBF SLOPES

SCOTT FRANKCOMBE

PO BOX 226
SHEFFIELD TAS 7306
P: 0408 129 779
E: anitaandscott@bigpond.com
SBF ROLAND BLACK

ALEASHA GOSS

PO BOX 107
SHEFFIELD TAS 7306
P: 0437 564 162
E: aleasha.goss@gmail.com
ZGS MOUNTAIN AIR

PHILLIP PARTRIDGE

63 GEORGE STREET
SCOTSDALE TAS 7260
P: 0400 636 836
E: summerhillssimmentals@outlook.com
MMP SUMMERHILL

CHELSEA RAYNER

50 SHARMANS ROAD
LOWER BEULAH TAS 7306
P: 0447 426 629
E: kdsimmentals@gmail.com
ZKU KIDMAN DOWNS

CLINT WIGHTON

68 CREELEYS ROAD
SASSAFRAS TAS 7307
P: 0428 891 444
E: clintwighton@gmail.com
KNI KNIGHTS CREEK

VICTORIA

ALTA GENETICS

1A/15 LILLEE CRESCENT
TULLAMARINE VIC 3043
P: 03 8336 1458
E: tania.nolan@altagenetics.com
3GT

SCOTT ANDERSEN

T/AS HAZEL DELL PASTORAL
130 KOETSVELDT ROAD
RYANSTON VIC 3992
P: 0409 785 846
E: scottando39@hotmail.com
TPJ HAZEL DELL

GRANT ANDERSON

128 EMMELINE DRIVE
GISBORNE VIC 3437
P: 0418 539 910
E: mtbealibastation@outlook.com.au
PSM MT BEALIBA SIMMENTALS

BREWAG BREWER

401 SOLDIER SETTLERS ROAD
TALLANGATTA VALLEY VIC 3701
P: 0419 600 527
E: brewerbeef@gmail.com
BBS BREWER BEEF

DAVID BREWER

401 SOLDIER SETTLERS ROAD
TALLANGATTA VALLEY VIC 3701
P: 0419600527
E: brewerbeef@gmail.com
SVD SYLVANDALE

STU CAMERON

1016 UNION ROAD
INVERGORDON VIC 3636
P: 03 5865 5200
E: inverleigh@outlook.com.au
SJC INVERLEIGH

RUBY & JACOB RILEY CANNING

MAVSTAR SIMMENTALS
178 TRIGGERS ROAD
MYAMYN VIC 3304
P: 0409 959 058
E: mavstar1965@gmail.com
ZRZ MAVSTAR

BRODHI CARRACHER

1959 GLENELG HIGHWAY
WANNON VIC 3301
P: 0418723996
E: brodhicarracher@hotmail.com
ZEU GRANGEBURN

TIM CARTER

102 GLEESONS LANE
PURNIM VIC 3278
P: 0407 036 407 (Karis)
E: fairviewpurnim@gmail.com
4TC DRYSDALE CREEK

HAYDEN CHAPPEL

556 TENNYSON ROAD
TENNYSON VIC 3572
P: 03 5488 2262
E: dalechappel@gmail.com
ZKO KOOPA CREEK

DALE CHAPPEL

556 TENNYSON ROAD
TENNYSON VIC 3572
P: 03 5488 2262
E: dalechappel@gmail.com
ZZC ZANTUK CREEK

SEYMOUR COLLEGE

29 STEWART STREET
SEYMOUR VIC 3660
P: 03 5771 1300
E: Amanda.McClaren@education.vic.gov.au
SEY SEYMOUR COLLEGE

GEORDIE ELLOITT CRYSTAL BELL

652 MYAMYM - MACARTHUR ROAD
BREAKAWAY CREEK VIC 3303
P: 0438 874 587
E: gclivestock@outlook.com.au
GCL GCL

PATTI DOELLE

PO BOX 23
EDENHOPE VIC 3318
P: 03 5585 1279
AYG MILKY WAY

CAM EMERSON

PO BOX 34
DRYSDALE VIC 3222
P: 03 5272 3488
E: camemerson3@gmail.com
AFA ALVA KOORT

ANDREW FLEUR & ERIN & MURRAY FERGUSON & VAN DER DRIFT

1345 DOWNER ROAD
TOOLAMBA VIC 3614
P: 0427 265 002
E: foleama04@gmail.com
LAR LARA ROSE

PETER & JANE FRASER

PO BOX 13
LANCEFIELD VIC 3435
P: 0408 336 171
E: hillborofarming@gmail.com
HBP HILLBORO PARK

GENETICS AUSTRALIA

PO BOX 195
BACCHUS MARSH VIC 3340
P: 0439 417 941
E: accounts@genaust.com.au
WWS

GARRY & KAYLENE GILLETT

LARA-LEIGH SIMMENTALS
38 FOREST ROAD SOUTH
LARA LAKE VIC 3212
P: 0412 017 660
E: garryg@aapt.net.au
GGJ LARA LEIGH

KAYLENE GILLETT

38 FOREST RD SOUTH
LARA VIC 3212
P: 0438 823 281
E: gillie@aapt.net.au
KJG LONESOME DOVE

ERIN GRYLLS

33-41 DROUIN ROAD
LONGWARRY VIC 3816
P: 0408 356 927
E: gryllseng@gmail.com
GCC GRYLLS

HAMISH HOOPPELL

PO BOX 3
ROCHESTER VIC 3561
P: 0428 004 349
E: hamishhooppell@outlook.com
ZOO SOUTHERNLAND

GEORGIA HOWELL

10 BAILEY STREET
AMPHITHEATRE VIC 3468
P: 03 5466 2357
E: georgiahowell96@gmail.com
ZGV TILANA

GREG & JEANETTE HUGGINS

809 BALLAN-EGERTON ROAD
MOUNT EGERTON VIC 3352
P: 03 5368 9142
JGH DANDAVJON

CRAIG JENKINS

202 KILLARA ROAD
GRUYERE VIC 3770
P: 0419 887 712
E: office@littlecreekbeef.com
LCR LITTLE CREEK

CHRIS & SHARON JORDAN

198 KOO-WEE-RUP LONGWARRY ROAD
LONGWARRY VIC 3816
P: 03 5629 9060
E: tenrose@dcsi.net.au
TCJ TEN-ROSE

JOHN LEEK

126 MT ARARAT NORTH ROAD
NAR NAR GOON VIC 3812
P: 0409 537 445
E: john@leeksplumbing.com.au
JLE MT ARARAT

LONGVIEW AGRICULTURE P/L

27 HAINES ROAD
BARRABOOL VIC 3221
P: 0424 541 428 (JARROD)
E: jarrod@longviewagri.com
LON LONGVIEW

ANGELA & ANDREW LYONS

885 MELVILLE-FOREST-VASEY RD
VASEY VIC 3407
P: 03 5575 6251
E: wilkaherefords@bigpond.com
AAL ANCO

CARLIE MACKELMANN

34 BEDFORD ROAD
INVERGORDON VIC 3636
P: 0447 772 142
E: carlie.mackelmann@gmail.com
MAK GLENWYN

ANNE MOYA

560 SEVEN MILE ROAD
NAR NAR GOON VIC 3812
P: 03 5942 5473
E: a.k.moya@bigpond.net.au
MFA TIRALSEA

JESS MURPHY

44 FAIRWAY DRIVE
DROUIN VIC 3818
P:
E: jess.murphy@outlook.com.au
MAY MAYTON LIVESTOCK

LAURA NANKERVIS

706 MORRISON ROAD
BYAWATHA VIC 3678
P: 0438 049 192
E: lauranankervis87@gmail.com
LSB SAMMI BELLA

B & C ROBERTS

ALCHEMY PARK
51 FULLER ROAD
INVERLEIGH VIC 3321
P: 03 5265 1580
E: alchemyparksimmentals@gmail.com
BRC ALCHEMY PARK

SALESIAN COLLEGE SUNBURY

C/- DANIEL GIBBINS
1-3 MACEDON STREET
SUNBURY VIC 3429
P: 03 9744 0000
E: farm@scr.vic.edu.au
FXI FIRST XI

STGENETICS AUSTRALIA PTY LTD

31 HOVELL ST
WODONGA VIC 3690
P: 02 6040 4373
E: nigel.semmens@stgen.com
3SG STGEN

JON SUTHERLAND

30 CAMPASPE RD
KILMORE VIC 3764
P: 0400 307 619
E: Jonathon.Sutherland@elders.com.au
SAY SAYLA PARK

DAVID AND REBECCA SWAYN

2808 PRINCES HIGHWAY
POMBORNEIT VIC 3260
P: 0400 464 460
E: daveyhoundboy@gmail.com
DRS HOLLYBUSH

DJ & HM THOMPSON

6868 MURRAY VALLEY HWY
COHUNA VIC 3568
P: 0418 583 252
E: david2183@live.com.au
THO WEST SKYE

SHIRLEY TRENER

BALGOWAN
PO BOX 517
NEERIM SOUTH VIC 3831
P: 03 5628 1491
E: balgowan@dcsi.net.au
SPR NULLAWARRE

PHILIP WEBB

PO BOX 264
YEA VIC 3717
P: 0421 223 752
E: info@webbpastoral.com.au
WEBB WEBB

PETER & VANESSA WENN

PINAROO HILLS SIMMENTAL STUD
PO BOX 30
BUNYIP VIC 3815
P: 0417 317 830 (Peter)
E: pinaroothills@hotmail.com
WCK PINAROO HILLS

VANESSA WENN

BUNYIP BLACK SIMMENTALS
PO BOX 30
BUNYIP VIC 3815
P: 0407 122 881
E: bunyipblacks@hotmail.com
VPW BUNYIP BLACKS

WESTELLA AGRICULTURAL SERVICES PTY LTD

PO BOX 444
DROUIN VIC 3818
P: 0400 502 892
E: westellaagservices@gmail.com
RMF WESTELLA BLACKS

EDWINA WILTSHIRE

PO BOX 326
BALNARRING VIC 3926
P: 03 5989 0807
E: windjammercharolais@bigpond.com
WJS WINDJAMMER

WEST AUSTRALIA

BRIGHTON FARMS

MR & RA KING
PO BOX 262
DONNYBROOK WA 6239
P: 0428 311 246
E: brighton.farms@bigpond.com
MRK BRIGHTON

PETER COWCHER

246 KENNEDY ROAD
WILLIAMS WA 6391
P: 08 9885 6058
E: ccowcher@westnet.com.au
AJY WILLANDRA

JAMES GARLAND

PO BOX 9243
PICTON WA 6229
P: 0406 078 019
E: mandys@dieselmec.com.au
SGP GARLAND PARK

ASHER GODDARD

LOT 500 ORANGE SPRINGS ROAD
ORANGE SPRINGS WA 6503
P: 0405 128 609
E: goddard.asher@gmail.com
BCS BRADFORD CATTLE CO

EDUARD & RANIA HAEGEL

LEVEL 1 UNIT 9 251 HAY STREET
EAST PERTH WA 6004
P: 0419 572 570
E: eduardhaegel@bigpond.com
PDV PARADISE VALLEY

HOWARD HANN

MR ANDREW HANN
RMB 4240
ESPERANCE WA 6450
P: 08 9071 4949
E:
MHH GREENDALE

KEVIN CHARLES & JANICE ROBYN HARD

NARACOOA SIMMENTAL STUD
668 MOUNT SHADFORTH ROAD
DENMARK WA 6333
P: 0457 285 256
E: naracoopastud@westnet.com.au
KUJ NARACOOA

MIKE ROB JULIE AND DIANE INTROVIGNE

197 DEZOTTI ROAD
BRIDGETOWN WA 6255
P: 08 9764 4012
E: m jintro@bigpond.com
MBB BONNYDALE

TONY & LOREEN KITCHEN

BANDEEKA STUD
432 BOUNDARY ROAD
BOYANUP WA 6237
P: 08 9727 2207
E: bandeeka@bigpond.com
LGK BANDEEKA

GRAHAM & ANDREW LARKE

JIM JAM
1248 PINJARRA ROAD
RAVENSWOOD WA 6208
P: 0479 149 290
E: glarke@westnet.com.au
RGS JIM JAM

KRISTY LAWSON

50 HULL WAY
BEECHBORO WA 6063
P: 08 9377 6531
E: rural_ropes@outlook.com
LMS LAMONT

DANNY & JENNY MAY

PO BOX 1164
BUSSELTON WA 6280
P: 08 9753 1884
E: daniel.partridge@bigpond.com
PDJ TULLAMORE PARK

KENT & NICOLE MUIR

1221 JUNCTION ROAD
PERUP WA 6258
P: 0408 922 925
E: wyndarragrazing@outlook.com
E4N WYNDARRA

NEXT GENERATION SIMMENTALS

CLEWS ASSET MANAGEMENT P/L
282 BOYANUP ROAD
STRATHAM WA 6237
P: 0418 155 992
E: mickclews@icloud.com
NGS NEXGEN

BRAD & SYLVIA PATTERSON

PO BOX 777
KATANNING WA 6317
P: 08 9822 8042
E: admin@bullockhills.com.au
ERP BULLOCKHILLS

ROBERT & RUTH POOLE

616 YELVERTON ROAD
YELVERTON WA 6280
P: 0475 522 735 RUTH
E: rr.poole@bigpond.com
RRP YELVERDALE

RIEGERT FARMS

101 NICHOLSON ROAD
YARLOOP WA 6218
P: 08 9709 8548
E: manager@riegertfarms.com.au
RIE WINTERFIELDS

STONEY ENTERPRISE

4649 CHILLINUP ROAD
GNOWELLEN WA 6328
P: 08 9847 1011
E: stoney@stoneyenterprise.com.au
1SE STIRLING END

NORM TRIGWELL

BOX 48
BOYANUP WA 6237
P: 08 9731 5281
E: ntrigwel@bigpond.net.au
HRT NU-PLAINS

PAUL TUCKEY

MUBARN
PO BOX 163
PINJARRA WA 6208
P: 0414819981
E: paul.tuckey@bigpond.com
ZPT MUBARN

FRED & PREV PR DACSIM WA

COLLEGE OF AGRIC DENMARK
C/- KEVIN MARSHALL
PO BOX 350
DENMARK WA 6333
P: 08 9848 0200
E: kevin.marshall@education.wa.edu.au
DNK INLET VIEWS

DAVID & AUDREY WEIGHTMAN

MR D & MRS A WEIGHTMAN
284 BULLANT DRIVE
FOREST GROVE WA 6286
P: 0427 593 095
E: topweight@westnet.com.au
TOP TOPWEIGHT

SAMUEL WEIGHTMAN

284 BULLANT DRIVE
FOREST GROVE WA 6286
P: 0427 593 095
E: sevenbrooks@gmail.com
ZWT SEVEN BROOKS

KANE & SARSHA WETHERELL

359 BOYANUP-PICTON ROAD
BOYANUP WA 6237
P: 08 9731 5248
E: kswetherell@bigpond.com
KSW BANDEEKA BLACKS

ASSOCIATE COMMERCIAL MEMBERS

NEW SOUTH WALES/ACT

ALAN & MARJORIE ANDERSON

WENDOUREE SIMMENTALS
PO BOX 34
COBBITTY NSW 2570
P: 0418 253 249
E: andcatt2@bigpond.com
SDM

LISA BONENKAMP

103 KELLYS ROAD
LONGFORD NSW 3581
P: 0493 308 416
E: lisa.bonenkamp@gmail.com
XLB

BOOMEY PARK

C/- ANGUS SHANNON
LARRAS LEE NSW 2866
P: 0427 636 566
E: boomeynorth@gmail.com
2VQ

CHRIS BOWMAN

PO BOX 615
NELSON BAY NSW 2315
P: 02 9973 3941
E: chris.bowman@pcce.net
VAS

PATSY BROMLEY

21 MCKINNON ROAD
BOAT HARBOUR NSW 2480
P: 02 6625 2341
E: patriciabromley@bigpond.com
BNA

BRUCE CREBERT

5166 ILLAWARRA HIGHWAY
ROBERTSON NSW 2577
P: 02 4885 1350
E: brucecrebert@bigpond.com.au
CBC

DAVID BAKER

PO BOX 555
CAMDEN NSW 2570
P: 02 4629 6287
E: dbaker@macarthur.nsw.edu.au
ZYM

ANTHONY JOHN & HELEN DONEHUE

18 INDERI LANE
WATTLE PONDS NSW 2330
P: 02 6573 3330
E: a.h.donehue@outlook.com
JAD

RUSSELL & BETH EVANS

1541 MANNING POINT ROAD
MITCHELLS ISLAND NSW 2430
P: 02 6553 2768
E: manning.sim@bigpond.com
REB

ROBERT & MARILYN FLANNERY

3239 CLARENCE TOWN ROAD
FLABROOKFIELD NSW 2420
P: 02 4996 4212
E: bonhomie3239@gmail.com
FLA

BR & MD FOGG

GLENAGRA
722 MAIN ROAD
CONGEWAI NSW 2325
UBI

GEOFF GRANT

PO BOX 932
PORT MACQUARIE NSW 2444
YBW

ELIZABETH HAMILTON

18 FOSTERS LANE
ROUS MILL NSW 2477
P: 02 6629 5327
E: lizmhilton8@gmail.com
QNU

JUSTIN INSKIP

101 MULQUNNEYS ROAD
BRAUNSTONE NSW 2460
P: 0428 432 558
E: justini@wsaccountants.com.au
2SK

SOUTHERN INTERNATIONAL

6/594 HOVELL STREET
ALBURY NSW 2640
P: 0421 282 947
E: kate.brabender@sailsxp.com
3SI

BRUCE & SANDRA JORGENSEN

THE VALLEYS
6224 BRUXNER HIGHWAY
MUMMULGUM NSW 2469
P: 02 6664 7262
E: brucejorgo@gmail.com
2SA

GARY & HELEN KILDEY

BROOM HILLS
GILGANDRA NSW 2827
P: 0419 680 895
E: garykildy@gmail.com
4GK

CJ & DM LOVE

ROUND MOUNTAIN ROAD
VIA MURWILLUMBAH NSW 2484
P: 02 6676 2424
E: diane.love@bigpond.com
2LO

BRUNO MARRAPODI

191 EDGAR STREET
ZNOCONDELL PARK NSW 2200
P: 0458 566 422
ZNO

RS & NR MCMANUS

25 POLA CREEK ROAD
VIA KEMPSEY NSW 2440
P: 02 6562 4490
VAP

KENNETH MOORE

3 HARPER ROAD
BASIN VIEW NSW 2540
E: kenneth.david53@gmail.com
VMK

ANTHONY NOVAK

1 BRITNY PLACE
KELLYVILLE RIDGE NSW 2155
P: 02 9836 0813
E: toknmn@outlook.com
2NK

ANNIE PUMPA

20 HIMALAYA DRIVE
TABLE TOP NSW 2640
P: 0458 227 277
E: annie_pumpa@outlook.com
WAP

NEVILLE & GAIL RAY

T/A RAY BROS
LEAWOOD PARK 8523
TUMBARUMBA ROAD
WAGGA WAGGA NSW 2650
P: 02 6922 1638
E: gailray4@bigpond.com
NGR

PETER SIMPSON

CHAIN GATE
RMB 404 OURA ROAD
WAGGA WAGGA NSW 2650
P: 02 6921 1271
E: petersimpson2650@gmail.com
YSN

TURNERS MAHONGA PARK

PENSHURST STATION
CONDOBOLIN NSW 2877
P: 02 6029 5266
2IK

AJ & NA VARLEY

ARKOONA
RMB 3095 LOWER FINLEY ROAD
FINLEY NSW 2713
P: 0427 831 811
E: arkoona@bigpond.com
4NV

ROBERT WEBBER

PO BOX 40
GLADSTONE NSW 2440
P: 02 6567 4586
E: webber@qtz.com.au
WRW

RICHARD & DIANNE WHITEMAN

THE ROOKERY
33050 KIDMAN WAY
COBAR NSW 2835
P: 02 6837 3902
E: rookery@activ8.net.au
2VV

RRACORP AUSTRALIA

UNIT 603 / 13 JOYNTON AVE
ZETLAND NSW 2017
P: 0427 289 343
E: brad.leahey@yarracorp.com
4YA

KENNETH ROBERT YERBURY

28 PRIDHAM STREET
4KYFARRER ACT 2607
P: 0407 361 637
4KY

QUEENSLAND

RHYS BRANSON

UNIT 28 PANDAS STREET
GYMPIE QLD 4570
P: 0429 610 975
E: 19rabpastoral@gmail.com
ZVQ

D & J BURNETT

BENDEMEER
CLERMONT QLD 4721
P: 07 4983 5175
E: office@arcuo.au
2BU

GEORGE PITKIN

GS NC DG & JW PITKIN
CULGOWIE
WANDOAN QLD 4419
P: 07 4627 4936
E: drdpastoral@bigpond.com
2KK

ROY & SHAUNA KELLY

T/A KELLY BROS
549 BLANCHVIEW ROAD
BLANCHVIEW QLD 4352
P: 07 4630 3133
E: ksk90@bigpond.com
2KY

JILL MATTHEWS

23/8 HIGHFIELDS ROAD
HIGHFIELDS
PLAINBY QLD 4352
P: 07 4615 5157
E:
2MU

STEVE & TERRI ASMUS

"WESTHOLME"
92 FRAYNE ROAD
AMAMOOOR QLD 4570
P:
E:
2TZ

R & J WALKER

IWONA
MITCHELL QLD 4465
P: 07 4623 2619
E: iwona@beef@gmail.com
2WI

ROSS & GAIL PRIOR

PO BOX 296
TIARO QLD 4650
P: 0407 181 714
E:
2WP

CHARLIE TAYLOR

155 KINGS LANE
MALENY QLD 4552
P: 07 5435 2380
E:
4CT

EA & MC COOKE

T/A RAAU PTY LTD
OLD PROSTON STATION
PROSTON QLD 4613
P: 0746 391 621
E: edwin.cooke@raau.com.au
4EC

FRANK FINGER

HILLVIEW
CLERMONT QLD 4721
P: 0429 832 887
E: fc.finger@bigpond.com
4FF

JASON JEYNES

JJ FITTING - POMINDA TRUST T/AS
'POMINDA' 260 SHANNEN RD
DALMA QLD 4702
P: 0402 829 422
E: jeyneslivestock@gmail.com
4JJ

SHERYL FRANZ

7989 KILCOY-MURGAN ROAD
MANUMBAR QLD 4601
P: 07 4168 8107
E: safranz@skymesh.com.au
4LF

SHANE POLZIN

44 MOONDOONER ROAD
MURGON QLD 4605
P:
E:
4SP

THOMAS BEWICK

PO BOX 67
RAVENSHOE QLD 4888
P: 0447 149 158
E: cherryburn@live.com.au
4TB

BARRY & DOREEN COOKE

ALLAMBIE PARK
1083 JONDARYAN NUGIL ROAD
BRYMAROO QLD 4403
P: 07 4692 7738
E: turana@activ8.net.au
DBR

LLOYD & WENDY FAIRBAIRN

PO BOX 77
KINGAROY QLD 4610
P: 07 4162 4212
E: lloyd.wendy@bigpond.com
FLW

BEVAN JOHNSTON

3723 IRONPOT RD
MS 514
KINGAROY QLD 4610
P: 07 4164 8167
E:
JBK

NOELLE & SHANNA WARDLE

WARDLE
WONGA-BRI
451 BECKETT ROAD
BRIDGEMAN DOWNS QLD 4035
P: 07 3263 2172
E:
NSW

CLIFF & JOY YORK

GLENGYLE
DULACCA ROAD SOUTH
DULACCA QLD 4425
P: 07 4628 1121
E:
YOR

SOUTH AUSTRALIA

CI & MK BATEMAN

PMB 55
MILLICENT SA 5280
P: 0428 856 658
E: chrismaris@bigpond.com
2UQ

KEN & KAYE BATT

41 ARTHUR STREET
PENOLA SA 5277
P:
E: royalpark1@bigpond.com
3KK

TONY HEAD

PO BOX 62
CUMMINS SA 5631
P: 08 8676 8013
E: calaundra@bigpond.com
2UH

LS JOHNSON & SONS

436 JOHNSON ROAD
NARACOORTE SA 5271
P: 0419 036 964
E: gljspringbank@gmail.com
4GJ

CHRIS KLAASSENS

90 RUWOLDT ROAD
YAHL SA 5291
P: 0408 854 812
E: klaassenscontractors@gmail.com
4CK

KJ & HA MCGRATH

286 BURKS ISLAND RD
BEACHPORT SA 5280
P: 08 8735 8610
E: millvet@internode.on.net
KHM

JAMES MOORE

17 CHINAMANS LANE
PENOLA SA 5277
P: 0413 184 074
E: tomjmoore94@gmail.com
5JM

PHIL & MARY NALPA PASTORAL COMPANY

589 NALPA STATION ROAD
NALPA SA 5255
P: 08 8572 7219
E: jpwithers@bigpond.com
AQX

GM & MA SMITH

BOX 85
RIVOLI
RENDELSHAM SA 5280
P: 0427 354 258
E: rivoli8@bigpond.com
2VC

STEPHEN SMITH
3846 KONETTA ROAD
LUCINDALE SA 5272
P: 0417 858 579
E: lakalaangus@gmail.com
4SG

TIM SMITH
PO BOX 605
LOXTON SA 5333
P: 08 8587 6218
E:
STC

SUNRAY PASTORAL
PO BOX 762
MILLICENT SA 5280
P: 0428 359 034
E: sunraypastoral@hotmail.com
2VD

JIM AND FRANK YOUNG
1/40 NURSERY WAY
HIGHWAY SA 5089
P: 08 8278 6123
E: plus4more@icloud.com
ANJ

TASMANIA

DARRYL & YVONNE BARKER
PO BOX 148
PENGUIN TAS 7316
P: 0427 509 792
DYB

MARTIN & SUZIE DUMARESQ
MT IREH
358 PATEENA
LONGFORD TAS 7301
P: 03 6391 1630
E: mountirehestate@netspace.net.au
AQC

VICTORIA

NR & PM ADAMSON
PO BOX 319
PORT FAIRY VIC 3284
P: 03 5562 0620
E: nadamson@charlesstewart.com.au
NPA

COREY BAULCH
OLD TIMBOON ROAD
SKIBO VIC 3260
P: 0437 448 837
4BC

MATT BAXTER
138 DAIRY LANE
THE SISTERS VIC 3265
P: 03 5592 6227
E: MBaxter@charlesstewart.com.au
ZTQ

DAVID BENNIE
314 ROLLOS ROAD
PANMURE VIC 3265
P: 0439 821 146
E: d.bennie@bigpond.com
NIE

SHELLEY BOULTON
593 COBAINS ROAD
COBAINS VIC 3851
P: 0429 445 461
E: shelley@wellingtonlivestock.com.au
2LZ

CAMERON BROS
651 MONARO HIGHWAY
CANN RIVER VIC 3890
P: 03 5158 6302
E: cameronbros@bigpond.com
YCU

J & K CLARK
1045 OUTTRIM ROAD
INVERLOCH VIC 3996
P: 03 5674 2722
2KZ

GEOFF & LAURA COCKERELL
15 PARK STREET
PORTARLINGTON VIC 3223
P: 03 5259 3691
E: gelorapark@tpg.com.au
GLC

ROSEBANK PASTORAL COMPANY
1960 CASTERTON-APSLEY ROAD
NANGEELA VIC 3312
P: 03 5582 4229
E: stephenmjkoach@hotmail.com
4RP

TERRY & SUSAN COOLAHAN
150 BAYNE STREET
TERANG VIC 3264
P: 0429 832 204
TSC

JOHN CRAWFORD
PO BOX 1
DARNUM VIC 3822
P: 03 5627 8414
E: jicrawford@bigpond.com
2CJ

RICKY FOSTER
HAVEN PARK ENTERPRISES
550 SATIMER ROAD
WANDO VALE VIC 3312
P: 03 5582 0200
E: randnfoster@havenpark.com.au
4RF

SUE GILBEE
MT CAROLINE
5321 MELBA HIGHWAY
YEA VIC 3717
P: 03 5797 8500
2QG

GLEN BROTHERS PTY LTD
WATTLEBANK
64 FLEMINGS ROAD
GUILDFORD VIC 3451
P: 0427 047 616
E: glenbrothers2@gmail.com
2VB

FIONA GLOVER
75 HEADS RD
LANG LANG VIC 3984
P: 0416 216 951
E: fiona@wattlewoodangus.com.au
200

SIMON ROY & JOSHUA ROD GREAVES
280 GARVIES ROAD
NERRENA VIC 3953
P: 0427 649 394
E: greaves.josh@outlook.com
2QK

TREVOR & LYN HATCH
HOOK ROAD
ATHLONE VIC 3818
P: 03 5659 9237
E: hatch@dcsi.net.au
BMH

JASON & KATH HEAD
PO BOX 942
ECHUCA VIC 3564
P: 03 5480 7029
E: jason_head_6@hotmail.com
JAH

ELLEN HEBBLEWAITE
PINEHOLME
415 MT HESSE RD
EURACK VIC 3251
P: 03 5234 6241
VME

KIM HODDER
15 SCHOLAR DRIVE
BUNDOORA VIC 3083
P: 03 8358 8800
E: fletch.Kelly@genusplc.com
3BS

DAN IVONE
640 CARBOOR WHOROULY ROAD
WHOROULY SOUTH VIC 3735
P: 0427 480 548
E: daniel.ivone@nutrien.com.au
3IV

BERNARD IVONE
398 BUFFALO CREEK ROAD
MYRTLEFORD VIC 3736
P: 03 5752 2572
E: bivone@bigpond.com.au
4BI

JAB PASTORAL PTY LTD
PO BOX 508
MAFFRA VIC 3860
P: 0429 427 811
E: jabpastoral@wideband.net.au
3AJ

PA & JA JOHNSON
350 JOHNSON SIDING ROAD
GREENWALD VIC 3304
P: 0408 958 451
E: pjjohnson10@bigpond.com
4PJ

GARY WAYNE JONES
6679 PRINCES HIGHWAY
MUMBANNAR VIC 3304
P: 03 5528 6261
E: glenample83@gmail.com
YXP

IAN KERR
BALDS ROAD
WINNAP VIC 3304
P: 03 5528 1216
4IK

GARY LANGSHAW
BARWALLA
PO BOX 536
SALE VIC 3850
P: 0417 134 169
E: barwalla_4330@bigpond.com
2LG

GORDON & VALERIE LEAR
11 BOWLES LANE
YACKANDANDAH VIC 3749
E: gordonlear@bigpond.com
2LR

MALCOLM MACFARLANE
11 NORTH ROAD
JINDIVICK VIC 3818
P: 0429 985 267
E: dimalint88@gmail.com
3MM

ANDREW T MARRIOTT
TILPA
162 GRIMWADE ROAD
BENALLA VIC 3672
P: 03 5762 6722
E: tilpa162@bigpond.com
YYM

RICHARD & KYLIE MARTIN
210 MCMAHONS ROAD
KARIAH VIC 3260
P: 0400 216 635
E: manoorap@bigpond.net.au
4BP

LAURENCE MILLARD
475 RIFLEBUTTS RD
BIRREGURRA VIC 3242
P: 0407 840 701
E: mumzie_dadzie@hotmail.com
4LM

COLIN NOEL MUNRO
BURRENDAH
3911 GLENELG HWY
COLERAINE VIC 3315
P: 03 5575 2049
E: noelmunro48@icloud.com
2VO

NEALE PARKE
201 PETERSONS ROAD
ELLINBANK VIC 3821
P: 0412 863 076
E: lisast@dcsi.net.au
2NF

BRUCE PRATT
141 BLAZES TRACK
WARRAGUL SOUTH VIC 3821
P: 0428 310 156
E: naalena@dcsi.net.au
2UP

WILL RICHARDSON
125 ERVIN'S ROAD
MT MORIAC VIC 3240
P: 0418 520 735
E: evib@austrex.com.au
3WR

JULIE & PETER ROTHENBERGER
7070 GOULBURN VALLEY HIGHWAY
KIALLA WEST VIC 3631
P: 03 5823 2288
E: julierothenberg88@gmail.com
KWS

AGNES SCHEMBRI
MAVERICK SIMMENTALS
4110 HAMILTON HIGHWAY
HESSE VIC 3321
P: 03 5287 1248
PPS

ANTONIA SLADIC
3 GASCOYNE LN
WEST WODONGA VIC 3690
P: 0410 045 090
E: asladic29@gmail.com
XAS

GREG SMITH
115 CHRISTIES ROAD
ELLIMINYT VIC 3250
P: 0438 315 204
E: gregorysmith.83@gmail.com
2VK

SA & CV SMITH
64 PRINCES HWY
BOLWARRA VIC 3305
P: 0417 332 968
E: sashere@yahoo.com.au
4SS

MELISSA STEWART
115 BROCK ROAD
HALLORA VIC 3818
P: 0438 235 136
E: mel@rawprideorganics.com.au
3MS

JOHN & MAREE TERRILL
76 CHILTERN VALLEY ROAD
RUTHERGLEN VIC 3685
P: 02 6032 8115
E: terrillj@bigpond.net.au
2IL

MATTHEW THOMAS
1196 LONGWOOD-RUFFY ROAD
RUFFY VIC 3666
P: 0412 596 496
E: makt74@yahoo.com.au
2NM

GREG & YVONNE THOMPSON
150 LAING ROAD
NAYOOK VIC 3832
P: 03 5628 4366
2TM

PETER AND KERRY TULL
97 LANGS ROAD
LIMESTONE VIC 3717
P: 0417 541 067
E: murrinstone@hotmail.com
4PT

MICHAEL & SUE VAN HOUT
935 ARALUEN ROAD
SHADY CREEK VIC 3821
P: 03 5626 6353
E: s.hout935@dcsl.net.au
2VH

MARK WEBSTER
140 PINEGROVE ROAD
NORTH POOWONG VIC 3988
P: 043 802 994
E: marlingrange@gmail.com
4MW

JOHN WILLIAMS
60 MACKAYS ROAD
IRRAWARRA VIC 3250
P: 0438 315 232
3JS

WEST AUSTRALIA

WJ ATKINSON
45 SWANSEA STREET
EAST VICTORIA PARK WA 6101
P: 0427 013 453
E: helsak@westnet.com.au
3WA

MALCOLM AULD
2710 CHESTER PASS ROAD
NAPIER WA 6330
P: 08 9844 3989
E: malcolmauld2710@gmail.com
QWB

GEOFF & MARIE CATTACH
MR GR AND MRS MP CATTACH
1 LANGHAM STREET
NEDLANDS WA 6209
P: 0419 046 678
E: gcattach@westnet.com.au
WBC

SL & ME COCKRAM
PO BOX 51
GIN GIN WA 6503
P: 0417 957 523
4CS

KEN ELLIOTT
860 HOPELAND ROAD
KEYSBROOK WA 6126
P: 0419 860 010
E: keysbrooktimbers@bigpond.com
2WU

BRENDON GIUDICI
2349 DONNYBROOK/BOYUPBROOK ROAD
GLEN MERVYN WA 6239
P: 0488 591 458
E: bmgjudici@gmail.com
3BG

JW HALTER
6 HOCKEY PLACE
WEST BEACH WA 6450
P: 0428 144 760
E: andrew.halter.76@gmail.com
4JH

ROBERT & MINNIE ITALIANO
PO BOX 157
HARVEY WA 6220
P: 08 9729 1232
E: rosemontpark1@bigpond.com.au
RMI

TERRY JAMES
TERRICA VALLEY
PO BOX 164
HYDEN WA 6359
P: 0428 506 507
E: terricavalley@outlook.com
4TJ

PETER JOHN
988 QUEEN ELIZABETH AVENUE
CHAPMAN HILL WA 6280
P: 0428 556 399
E: sherolee2@bigpond.com
PET

STEVEN & ROBYN LEES
TALLIDENE SIMMENTALS
BOX 183
BOYUP BROOK WA 6244
P: 08 9766 1035
SRL
T G MARSHALL
324 RMB
CRANBROOK WA 6321
P: 08 9834 3015
2CM

BRAD MCLEAN
964 KWORNICUP ROAD
FOREST HILL WA 6324
P: 0437 881 945
E: murrayvalley1949@gmail.com
4MV

JOHN MINTY
3127 YANDAN ROAD
DANDARAGAN WA 6507
P: 0427 512 017
E: mintyaccounts@yahoo.com
4JM

DEESIDE MUIRS
RICHARD SHUARD
3403 MUIR HIGHWAY
MANJIMUP WA 6258
P: 08 9773 1260
E: deeside@activ8.net.au
2LU

F. PESSOTTO & SONS
P.O. BOX 102
MANJIMUP WA 6258
P: 08 9772 3570
E: pessotto@karriweb.com.au
4PS

MARCIA PUTTICK
84 PRITCHARD STREET
MANJIMUP WA 6528
P: 0450 20 664
E: michael.simonds@bigpond.com
4MP

ROBERT JOHN TREASURE
FERNHILL
P O BOX 10
WANDERING WA 6308
P: 08 9884 1010
YSH
HOWARD JOHN TREVENEN
37 STONE CRES
DARLINGTON WA 6070
P: 0403 054 162
E: trevenen@bigpond.net.au
2VJ

SARA & SCOTT WEIR
26 MALTRUP ROAD
DINNINUP WA 6244
P: 0428 218 759
E: ssweir@iinet.net.au
2VW

NEVILLE WREN
431 DONNELLY ROAD
MANJIMUP WA 6248
P: 0428 697 135
E: nrwren@hotmail.com
NRW

JB & H WRINGE
PO BOX 823
DONNYBROOK WA 6251
P: 0417 962 572
4JW

JUNIOR STUD MEMBERS

NEW SOUTH WALES

BENJAMIN AUCKRAM

671 KOONORIGAN ROAD
KOONORIGAN NSW 2480
P: 0477 887 266
E: benauckram04@gmail.com
VYV VALLEY VIEW

JAMES BARNIER

239 SOUTH ARM SCHOOL ROAD
SOUTH ARM NSW 2460
P: 0428 448 006
E: amber.barnierlj@gmail.com
BAR COLDSTONE

SKYE BAXTER

13 VENUS CLOSE
CRANE BROOK NSW 2749
P: 0431 254 792
E: skyebaxter22@gmail.com
SVL SUNNYVALE LIVESTOCK

LEAH BENN

125 TOMKI BIGHT RD
GREENRIDGE NSW 2471
P: 0437 005 302
E: jtbenn01@gmail.com
LGA LG&A

MIA BOERS

PO BOX 3
HOLBROOK NSW 2644
P: 0417 091 734
E: trent@schubertboers.com.au
MIA MB

JADA & JAY BUCHAN

1 CALLISTEMON CLOSE
COWRA NSW 2794
P: 0427 203 795
E: jadabuchan@gmail.com
JJB JJ

LIBERTY COOK

14724 GWYDIR HIGHWAY
SHANNON VALE NSW 2370
P: 0487 412 507
E: kelly.cook2@tafensw.edu.au
ZLJ LIBERTY JADE

CHARLOTTE COOPER

PO BOX 2
MARULAN NSW 2579
P: 0412 195 931
E: narlisa.cooper@westnet.com.au
XCC ASHCHARMOO

STELLA EMERALD & ANNABELLE DEAN

259 CULMARAN CREEK ROAD
MALLANGANEE NSW 2469
P: 0409 157 982
E: tonydean6@bigpond.com
DEA CULMARAN PINES

BRIDGET DWYER

67 CAINS ROAD
BOOROWA NSW 2586
P: 0400 516 393
E: belviewag@gmail.com
DWY BELVIEW

TOBY HANNAH & MACKENZIE FLYNN

232 WAIKOM ROAD
KINGSPLAINS NSW 2799
P: 0428 682 745
E: meljoy007@hotmail.com
THM CEDAR HILL

CHARLEE & COOPER GOULD

42 GOULD ROAD
GREENRIDGE NSW 2471
P: 0416 354 061
E: bmgould007@bigpond.com
ZGX COOPLEE

CHELSEA GREEN

108N SOUTH STREET
WALCHA NSW 2354
P: 0474 055 187
E: chelseagreen1203@gmail.com
CHE CG

ALBERT GREEN

108N SOUTH STREET
WALCHA NSW 2354
P: 0417 941 315
E: bullenlisa_may@hotmail.com
ERT ERT

ARTHUR WILLIAM GREEN

MERRYVALE
1838 WOODHOUSELEE ROAD
ROSLYN NSW 2580
P: 0400 570 758
E: info@summitlivestock.com.au
GWA SUMMIT

MICQUELLA GRIMA

HOPE HILL CATTLE CO
39 CALVERTS ROAD
ORCHARD HILLS NSW 2748
P: 0474 108 577
E: micquellag03@yahoo.com.au
ZZG HOPE HILL

THEODORE LOUDON

8R TERRA DRIVE
DUBBO NSW 2830
P: 0437 723 202
E: kloud_livestock@hotmail.com
TLO KLOUD

SIENNA MANNING

973 WOODHOUSLEE ROAD
WAYO NSW 2580
P: 0490 897 379
E: mparsons2403@gmail.com
SIE ROSORA

MATILDA MCCOY

297 OLD COAST ROAD
DORRIGO NSW 2453
P: 0447 627 665
E: coolibah07@bigpond.com
YBL YAMBALA

LACHLAN & AARON MOORE

63 LANGLEY VALE ROAD
LANGLEY VALE NSW 2426
P: 0400 483 360
E: moorevaleai@gmail.com
MCC MOOREVALE

LAYLAH RYFFEL

123 RICKARD ROAD
WARRIMOO NSW 2774
P: 0412 967 105
E: eric_ryffel@hotmail.com
ZLI RUBY

ADAM SCIBERRAS

22R DONNELLY ROAD
EUMUNGERIE NSW 2822
P: 02 4777 4611
E: motorcross87@live.com.au
ZRX COUNTRY STYLE

FREYA WEISMANTEL

81 SHERWOOD ROAD
ALDAVILLA NSW 2440
P: 02 6562 6055
ZQW POPLA PARK

QUEENSLAND

CHLOE ANDREASSEN

124 CHERRY TREE ROAD
KANIGAN QLD 4570
P: 0474 759 960
E: chloe.and124@gmail.com
XCA C. MARIE

WILLIAM BEDDOWS

1325 MT MCEUEN ROAD
HIVESVILLE QLD 4612
P: 0499 199 220
E: sandk.beddows@gmail.com
WBW BOTTLE TREE

JESSICA BEDDOWS

1674 MURGON GAYNDAH ROAD
MURGON QLD 4605
P: 07 4168 6061
E: Jessbeddows1405@gmail.com
ZQJ SILVER LININGS

LILA BURTON

4 FLINDERS STREET
CABARLAH QLD 4352
P: 0417 226 624
E: lilajb08@icloud.com
XJB KBV L

H I A & A HANSON

PO BOX 267
MOURA QLD 4718
P: 0498 349 463
E: hansonholdings@bigpond.com
HIA HANSON

BROOKE ISEPPI

'LEAFMORE' M/S 35
DALBY QLD 4405
P: 0428 718 076 Brooke
E: gklivestock1@gmail.com
GKI GK

MACIE & WYATT ISEPPI

221 MULGOWIE ROAD
THORNTON QLD 4341
P: 0487 718 823
E: ellendale1@gmail.com
MWI ELLENDALE MW

MATILDA LAYCOCK

28 BROUGH COURT
ESK QLD 4312
P: 0430 719 991
E: claygully@gmail.com
MLY CLAY GULLY M

TYSON & BLAKE LAYCOCK

1706 ESK CROWS NEST ROAD
BIARRA VIA ESK QLD 4312
P: 0427 626 640
E: dlweedcontrol@bigpond.com
ZQY BRISBANE VALLEY

TY MEEK

709 WYUNA ROAD
EMERALD QLD 4720
P: 0428 747 902
E: zarabmeek@hotmail.com
DZT DZT

MELITA PALMER

192 BRIAN PASTURES ROAD
GAYNDAH QLD 4625
P: 0427 529 452
E: atilem192@gmail.com
UBE U BEAUTY

REGAN PIKE

235 SMITH ROAD
WOOLLOOGA QLD 4570
P: 0427 847 155
E: info@dvlf.com.au
UPK DEVILS VIEW

SALLY ROBINSON

157 DIOTHS RD
UPPER YARRAMAN QLD 4614
P: 0490 464 188
E: skrobinson26@icloud.com
VSK SK

JESSICA SALTER

376 DALBY NUNGIL ROAD
DALBY QLD 4405
P: 0419 739 273
E: megansalter7@gmail.com
WJK U8J CATTLE CO

ELLA STANTON

24 MARGOO ROAD
GOOMERI QLD 4601
P: 07 4168 7174
E: stantonfuelsupplies@live.com.au
BUR BURRUNDULLA

ACE HOPE & EVALYN WADLEY

2369 LEYBURN CUNNINGHAM
ROAD
CLIFTON QLD 4361
P: 0423 933 516
E: leomiaacehope@gmail.com
WDV DRAGON VALLEY

WILLIAM YORK

851 YARRAWONGA ROAD
WALLUMBILLA QLD 4428
P: 0458 933 308
E: yorkwilliam0512@gmail.com
WSY WILSAM

THOMAS ANDREW YORK

70 JACKSON-WANDOAN ROAD
JACKSON QLD 4426
P: 0448 492 180
E: scyork@bigpond.com
ZYT VERSATILE

ZOE YORK

70 JACKSON-WANDOAN ROAD
JACKSON QLD 4426
P: 0427 154 336
E: scyork@bigpond.com
ZYZ CHARMANA

SOUTH AUSTRALIA

HARRY BAKER

261 CONMURRA ROAD
FURNER SA 5280
P: 08 8734 3012
E: hbaker@bakergroup.com.au
WHA WOONALLEE H

OLIVIA BAKER

261 CONMURRA ROAD
FURNER SA 5280
P: 08 8734 3031
E: obaker@bakergroup.com.au
WOB WOONALLEE O

KEIRA CAMPAGNOLO

PO BOX 769
MYPONGA SA 5202
P: 0412 120 935 (Vaughan)
E: savannahsimbrahs@gmail.com
ZXC SAVANNAH-K

GRANT HIGH SCHOOL

C/- SCOTT CRAM
HOSKING AVENUE
MOUNT GAMBIER SA 5290
P: 08 8726 3100
E: scott.cram856@schools.sa.edu.au
ZKQ GHS

WILLOW MATTSCHOSS

1625 BARABBA ROAD
BARABBA SA 5460
P: 0400 991 736
E: cloverdowns15@gmail.com
WLW ALICEBURGH

BRYCE JACOB ROTHE

4679 RIDDOCH HWY
PADTHAWAY SA 5271
P: 08 8765 5197
E: rothe.17@outlook.com
ZYQ BULLOAK BLACKS

MATILDA ROTHE

C/- POST OFFICE
PADTHAWAY SA 5271
P: 08 8765 5197
E: rothe.17@outlook.com
ZYR KINGFISHER

LILLY VIVIAN

RUNDLE ROAD
COWIRRA SA 5238
P: 08 8569 2266
E: office@knockando.com.au
LVK KNOCKANDO L

TASMANIA

ETHAN FRANKCOMBE

PO BOX 226
SHEFFIELD TAS 7306
P: 0437 794 198
E: ethanfrankcombe@icloud.com
ZEV TAZ SIMMENTAL

JORDAN HINGSTON

468 TOP GAWLER ROAD
GAWLER TAS 7315
P: 0455 269 252
E: jordan7707@icloud.com
HIN CLISTON

LILLI ROCKLIFF

PO BOX 155
SHEFFIELD TAS 7306
P: 03 6491 1072
E: lillirockliff@outlook.com
ZQG REO GLYN

ALLAN WALKER

PO BOX 212
CURRIE TAS 7256
P: 0467 243 084
E: andrew.walker5@yahoo.com
SBE BEN EDEN

VICTORIA

JOHN & PENNY BUCHANAN

83 MILLER STREET
TONGALA VIC 3621
P: 0429 771 591
E: rowlonpark@gmail.com
DJB ROWLON PARK

JACOB CANNING

178 TRIGGERS ROAD
MYAMYN VIC 3304
P: 0487250156
E: mavstar1965@gmail.com
ZWV MAVGOLD

BEN GLOVER

75 HEADS RD
LANG LANG VIC 3984
P: 0416 216 951
E: ben@wattlewoodangus.com.au
XBG WATTLEWOOD

MICHAEL KERR

1330 CALDERMEADE ROAD
CATANI VIC 3981
P: 0438 118 224
E: emilyscottsmith@icloud.com
ZAF SVP

MONIQUE MILLER

360 PINE LODGE NORTH ROAD
PINE LODGE VIC 3631
P: 0499 005 033
E: monique9119@hotmail.com
MLM MLM

EVA & MYLES STORM

60 THOMPSONS ROAD
CULLEN VIC 3568
P: 0428 262 991
E: trentstormley@yahoo.com
EMS BARR CREEK

MATTHEW VOSPER

PO BOX 306
RIDDELLS CREEK VIC 3431
P: 0499 395 214
E: mvospaa@gmail.com
ZXV MV

WEST AUSTRALIA

INDIANA SMITH

147A GLADSTONE ROAD
RIVERVALE WA 6103
P: 0427 025 100
E: indianasmith2002@gmail.com
VCC VALKYRIE CATTLE CO

KEELY SMITH

13772 MUIR HWY
FOREST HILL WA 6324
P: 0417 915 688
E: kildarragrazing@gmail.com
WFO FOREST OAK

OVERSEAS

KAI PHILLIP RIECKE

CABAÑA "LA TORCACITA"
PERU 345 5° D
C.A.B.A ARGENTINA C1067AAG
P: +54 011 4343 9193
E: piraymini@piraymini.com.ar
www.piraymini.com
OPM PIRAY

CALENDAR OF EVENTS

JANUARY

Stock and Land Beef Week (VIC, SA, NSW)
Grangeburn Simmentals (VIC)
Blue Ribbon Bull Sale (WA)

FEBRUARY

Mt Ararat Simmentals (VIC)
Woonallee Elite Bull Sale (SA)
Rockhampton All Breeds (QLD)
Numurkah Beef Spectacular Show (VIC)
Brewer Beef Annual Simmental Sale (VIC)
Royal Canberra Show (ACT)
Willandra Simmentals (WA)
Tugulawa Simmentals (SA)
Yerwal Estate/Mt Mooney Simmentals (SA)
Lakeside Simmentals (SA)

MARCH

Bonnydale (WA)
TAS Junior Beef Expo (TAS)
WALSA Supreme Bull Sale (WA)
Blackall Black Stump Sale (QLD)

APRIL

Clay Gully Online Female Sale (QLD)
Stud Beef Handlers Camp (VIC)
Sydney Royal Show (NSW)
Royal Bathurst Show (NSW)

Slopes and Roland Black Simmentals (TAS)
Woonallee On Line Genetic semen & embryo sale (SA)

MAY

Tennysonvale (NSW)
ASBA AGM

JUNE

Ag Grow Field Days and Sale (QLD)
Coolibah (NSW)

JULY

QLD Simmental Bull Sale (QLD)
Barana Simmentals (NSW)
SA Junior Heifer Expo (SA)
Farm Fantastic Expo (QLD)
Southern Beef Week (NSW & VIC)
Casino All Breeds (NSW)

AUGUST

Lucrana (QLD)
Bonnydale QLD (QLD)
Clay Gully Bull Sale (QLD)
Mala-Daki Simmentals (NSW)
Woonallee Tamworth Northern Black Bull Sale (NSW)
Brisbane Royal (Ekka) (QLD)
Southern Beef Week (QLD)

Ticoba Simmentals and Simbrahs (QLD)
Fairview Simmentals (QLD)

SEPTEMBER

Elite Cattle Co Bull Sale (QLD)
Wormbete Simmentals (NSW)
Royal Melbourne Show
Simmental Feature (VIC)
Meldon Park Bull Sale (QLD)
Royal Perth Show (WA)
Royal Adelaide Show (SA)
Casa Toro Simmentals (QLD)
VC Simmentals (NSW)
St Pauls (NSW)

OCTOBER

Karragarra Simmentals (QLD)
Royal Geelong Show (VIC)
Royal Launceston (TAS)
Royal Hobart (TAS)

DECEMBER

Beefing up the Next Generation Junior Camp (QLD)

ASBA Office closed between Christmas and New Year – ASBA would like to wish everyone a very Merry Christmas and Happy New Year!



Simmental
AUSTRALIA

ADVERTISERS' INDEX

3GH	17
Barana	23
Bonnydale	7
Casa Toro	27
Elite Cattle Co	31
GDL	68
Hobbs Livestock	2
Laraleigh	15
LNA Livestock	28
Logie	21
Mavstar Photography	29
Mavstar Simmentals	33
St Pauls	83
Tennysonvale	18
Willandra	3
Woonallee	84
World Wide Sires	25

2024 has been a great year!

Uhlan U436



Uhlan U436 topped our September bull sale at \$25,000. The online bull sale averaged \$9,150.

Uptown U425



Uptown U425 sold for \$34,000 to top our offering of 10 bulls as an invited guest to the September Elite Cattle Co Sale in Queensland. Our bulls averaged \$15,700.

Pear U447



Pear U447 topped our October online female and genetic sale at \$10,250. Cows averaged \$4,430 and yearling heifers averaged \$4,072.

Pear S419



Pear S419, the exciting young donor had embryos sell at \$1,000 each to be equal top embryo price at the October Sale. Overall 32 embryos sold to average \$781 per embryo.

Have any questions about Black Simmental? - give Bill a call.

SALES FOR 2025

Monday 15th September (Online):

St Pauls Genetics Bull, Female and Genetic Sale.

Thursday 4th September:

14 Bulls on offer at the Elite Cattle Co. Sale, Queensland.

PRIVATE SALE
• BULLS
• EMBRYOS
• SEMEN



Bill and Susan Cornell
Henty NSW
0428 293 498
billcornell@bigpond.com

Woonallee Simmentals

18th Annual Elite Production Sale



Woonallee Vasti T188 (P)



Woonallee Urban Magic U235

2024 Grand Champion Interbreed Pair at Royal Adelaide show

More
information



HE
SELLS IN
FEBRUARY!



Woonallee Uluru U210 (P)

Thursday, 13th February, 2025
120 bulls on offer

Contact Tom & Lizzy Baker

Phone: 0428 475 066 Email: tbaker@bakergroup.com.au

www.woonalleesimmentals.com

Follow us



For the very best in Simmental, whatever the requirement